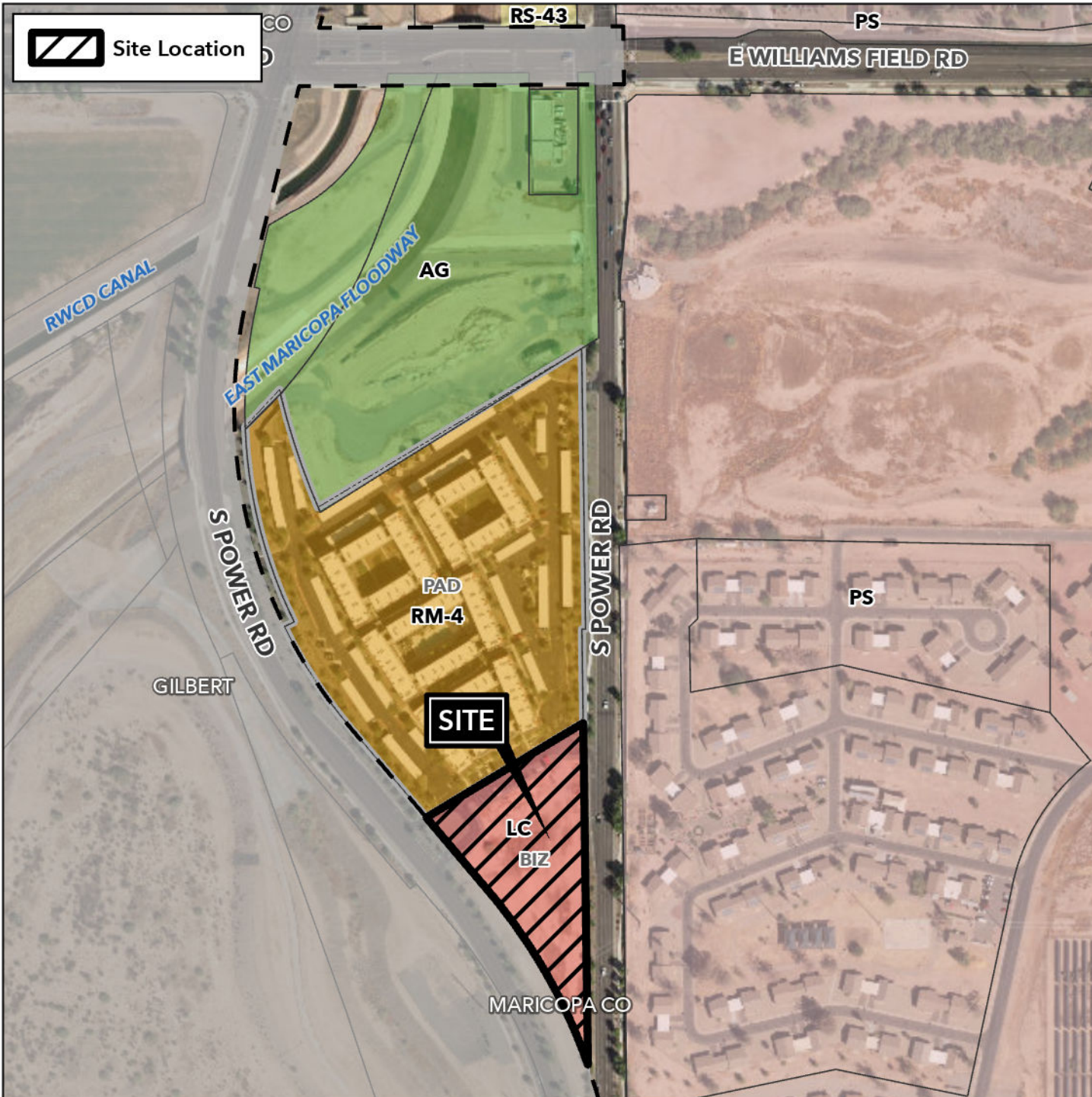


Planning and Zoning Vicinity Map: ZON22-01264

Case Details



Case:

ZON22-01264

Site / Address:

(District 6) 2± acres located approximately 1,200 feet south of the southwest corner of South Power Road and East Williams Field Road.

Request:

Rezone from Limited Commercial with a Bonus Intensity Zone Overlay (LC-BIZ) to LC with a new BIZ Overlay (LC-BIZ) and Major Site Plan Modification to allow for a multi-tenant commercial building with a drive-thru facility.

