

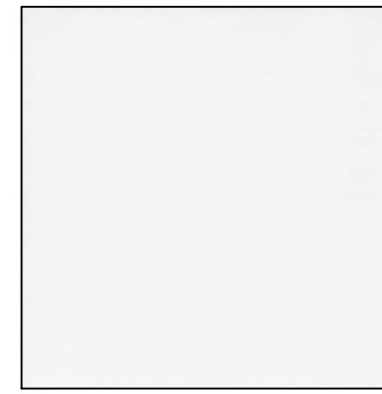
OWNER
 EDGED
 30 OLD KINGS HIGHWAY SOUTH, SUITE 1005
 DARIEN, CT 06820

ARCHITECT
 HKS, INC.
 350 N SAINT PAUL ST, SUITE 100
 DALLAS, TX 75201-4240

STRUCTURE
 HKS, INC.
 350 N SAINT PAUL ST, SUITE 100
 DALLAS, TX 75201-4240

MEP/FP
 TELIOS CORPORATION
 146 PAYNE STREET
 DALLAS, TX 75207

CIVIL ENGINEER
 HILGART WILSON
 2141 E. HIGHLAND AVE. STE. 275
 PHOENIX, AZ 85016



CP01
 a. MATERIAL TYPE: CONCRETE PANEL
 b. FINISH TYPE: PAINTED
 c. COLOR COATING: WHITE
 d. SATIN FINISH
 e. LOCATION: EXTERIOR WALLS



MP01
 a. MATERIAL TYPE: ARCHITECTURAL METAL PANEL
 b. FINISH TYPE: PAINTED
 c. COLOR COATING: CHARCOAL GRAY
 d. SATIN FINISH
 e. LOCATION: EXTERIOR METAL PANELS



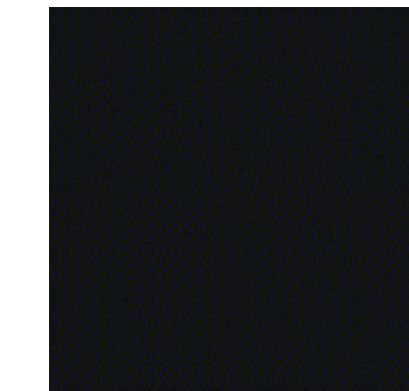
GL01
 a. MATERIAL TYPE: INSULATED COATED GLASS VISION
 b. OVERALL THICKNESS: 1 IN NOMINAL
 c. AIR SPACE: 1/2"; ALUMINUM BLACK ARGON
 d. INBOARD LINTEL: CLEAR HS. 1 1/4" THICK GLASS
 e. BASIS OF DESIGN 1" INSULATED LOW-E GLASS



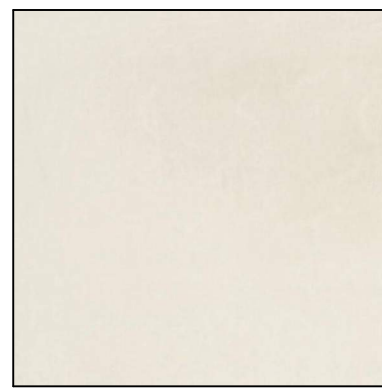
CP02
 a. MATERIAL TYPE: CONCRETE PANEL
 b. FINISH TYPE: PAINTED
 c. COLOR COATING: DARK GREY
 d. SATIN FINISH
 e. LOCATION: EXTERIOR WALLS



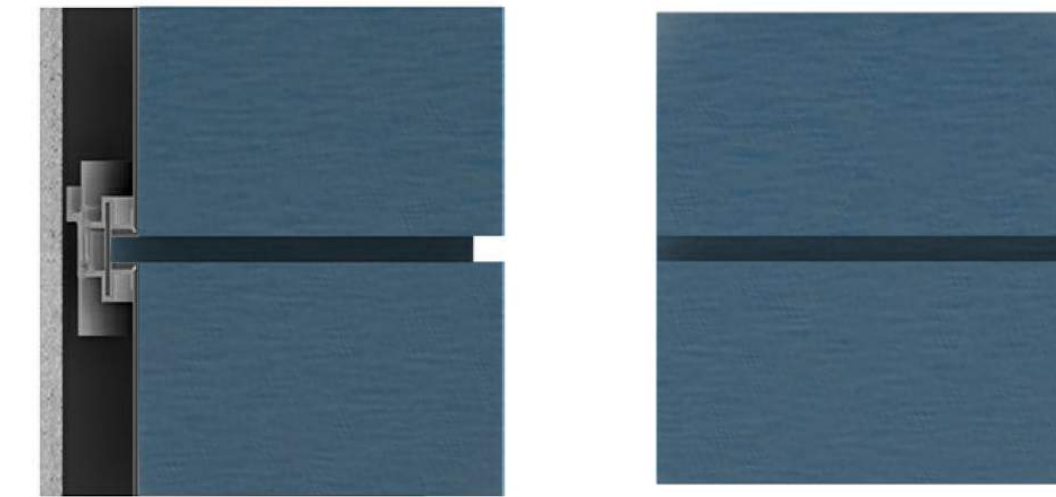
MP02
 a. MATERIAL TYPE: ALUM COMPOSITE PANEL
 b. FINISH TYPE: PRINTED WOODGRAIN
 c. COLOR: DOUGLAS FIR
 d. LOCATION: OFFICE ENTRY



PT01
 a. MATERIAL TYPE: PAINT
 b. COLOR: BLACK
 d. FINISH: SEMI-GLOSS
 e. LOCATION: RAILINGS, TRIM, GATES, FENCE
 EXT HARDWARE



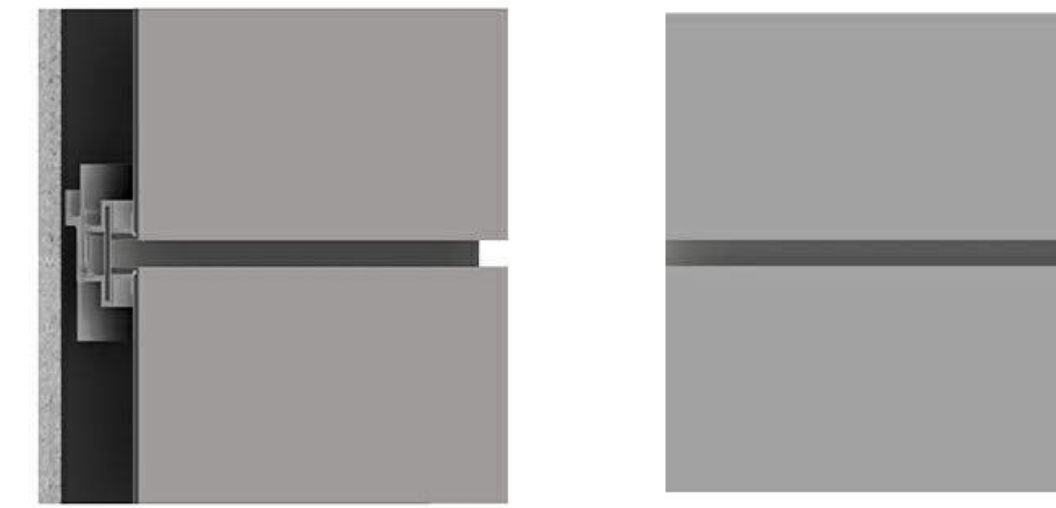
CP03
 a. MATERIAL TYPE: CONCRETE PANEL
 b. FINISH TYPE: PAINTED
 c. COLOR COATING: BEIGE
 d. SATIN FINISH
 e. LOCATION: EXTERIOR WALLS



MP03
 a. MATERIAL TYPE: ALUM COMPOSITE PANEL
 b. FINISH TYPE: PREFINISHED, MATTE
 c. COLOR: LIGHT BLUE (PER MANUFACTURER STANDARD SELECTION)



CP04
 a. MATERIAL TYPE: CONCRETE PANEL
 b. FINISH TYPE: PAINTED
 c. COLOR COATING: LIGHT GREY
 d. SATIN FINISH
 e. LOCATION: EXTERIOR WALLS



MP04
 a. MATERIAL TYPE: ALUM COMPOSITE PANEL
 b. FINISH TYPE: PREFINISHED, MATTE
 c. COLOR: LIGHT GREY (PER MANUFACTURER STANDARD SELECTION)



CP05
 a. MATERIAL TYPE: CONCRETE PANEL
 b. FINISH TYPE: PAINTED
 c. COLOR COATING: LIGHT BLUE
 d. SATIN FINISH
 e. LOCATION: EXTERIOR WALLS

INTERIM REVIEW ONLY

These documents are incomplete, and are released for interim review only and are not intended for regulatory approval, permit, or construction purposes.

Architect: _____
 Arch. Reg. No.: _____
 Date: _____

REVISION	NO.	DESCRIPTION	DATE

HKS PROJECT NUMBER
26033.000
 DATE
09/25/2023
 ISSUE
DESIGN REVIEW

SHEET TITLE
MATERIALS SAMPLE BOARD

SHEET NO.
SP.4