



ENHANCED LEFT - STREETSIDE



LEFT

TOTAL WALL AREA (MINUS WINDOWS & DOORS)	425 S.F.
2ND FINISH MATERIAL (STONE)	92 S.F. (20.5%)
TOTAL WALL AREA (FRONT)	509 S.F.
TOTAL WINDOW AREA (FRONT)	61 S.F. (12.0%)
NOTE: ALL WINDOWS ADJACENT TO STREETS WILL HAVE A MIN. 2" DEEP OR 4" DEEP RECESS	
TOTAL WALL AREA (STREETSIDE)	874 S.F.
TOTAL WINDOW AREA (STREETSIDE)	84 S.F. (9.6%)



REAR



RIGHT



DECORATIVE POLYURETHANE VENT

DECORATIVE SHUTTERS  
(SW6160 BEST BRONZE)

BODY  
(SW7549 STUDIO TAUPE)

POPOUTS  
(SW6148 WOOL SKEIN)

ENVIRONMENTAL STONEWORKS  
(VILLA BLEND - EAGLE'S NOOK  
STONE VENEER)

EAGLE ROOF TILE  
(PONDEROSA TEXTURED FLAT TILE #5689  
BROWN RANGE)

POLYURETHANE CORBELS AND SHELF

BRICK HEADER

COACH LIGHT

BRICK CAP

GARAGE DOOR  
(SW6151 QUIVER TAN)

FRONT DOOR  
(SW6160 BEST BRONZE)

TOTAL WALL AREA (MINUS WINDOWS & DOORS)	473.5 S.F.
2ND FINISH MATERIAL (STONE/BRICK)	71 S.F. (15.0%)

TOTAL WALL AREA (FRONT)	522 S.F.
TOTAL WINDOW AREA (FRONT)	48.5 S.F. (9.3%)

NOTE: ALL WINDOWS ADJACENT TO STREETS WILL HAVE A MIN. 2" DEEP  
OR 4" DEEP RECESS

TOTAL WALL AREA (STREETSIDE)	887 S.F.
TOTAL WINDOW AREA (STREETSIDE)	84 S.F. (9.5%)



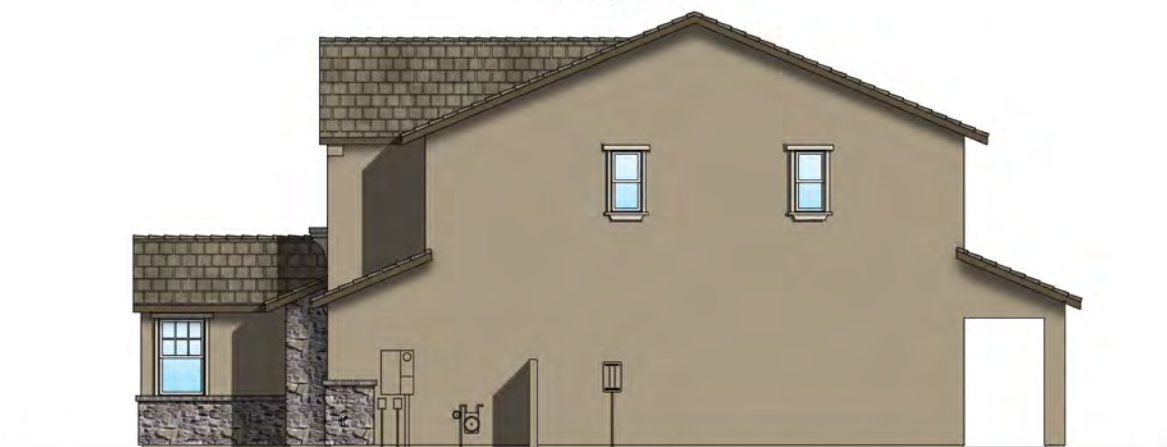
ENHANCED LEFT - STREETSIDE



REAR



LEFT



RIGHT



EAGLE ROOF TILE  
(CAPISTRANO 'S' TILE #3773  
WALNUT CREEK BLEND)

DECORATIVE SHUTTERS  
(SW2846 ROYCROFT BRONZE GREEN)

FLAT LACE STUCCO BODY  
(SW7691 BILTMORE BUFF)

SAND FINISH TRIM  
(SW7566 WESTHIGHLAND WHITE)

SAND FINISH STUCCO WAINSCOT

SAND FINISH CORNER TRIM

COACH LIGHT

GARAGE DOOR  
(SW7055 ENDURING BRONZE)

FRONT DOOR  
(SW2846 ROYCROFT BRONZE GREEN)

TOTAL WALL AREA (MINUS WINDOWS & DOORS) 406 S.F.  
2ND FINISH MATERIAL (SAND FINISH STUCCO) 78 S.F. (19.2%)

TOTAL WALL AREA (FRONT) 477 S.F.  
TOTAL WINDOW AREA (FRONT) 71 S.F. (14.9%)

NOTE: ALL WINDOWS ADJACENT TO STREETS WILL HAVE A MIN. 2" DEEP  
OR 4" DEEP RECESS

TOTAL WALL AREA (STREETSIDE) 792 S.F.  
TOTAL WINDOW AREA (STREETSIDE) 84 S.F. (10.6%)

ENHANCED LEFT - STREETSIDE

REAR

LEFT

RIGHT





REAR

TOTAL WALL AREA (MINUS WINDOWS & DOORS)  
2ND FINISH MATERIAL (STONE) 456 S.F.  
81 S.F. (17.8%)

TOTAL WALL AREA (FRONT) 521 S.F.  
TOTAL WINDOW AREA (FRONT) 65 S.F. (12.5%)

NOTE: ALL WINDOWS ADJACENT TO STREETS WILL HAVE A MIN. 2" DEEP  
OR 4" DEEP RECESS

TOTAL WALL AREA (STREETSIDE) 894 S.F.  
TOTAL WINDOW AREA (STREETSIDE) 83 S.F. (9.3%)



ENHANCED RIGHT - STREETSIDE

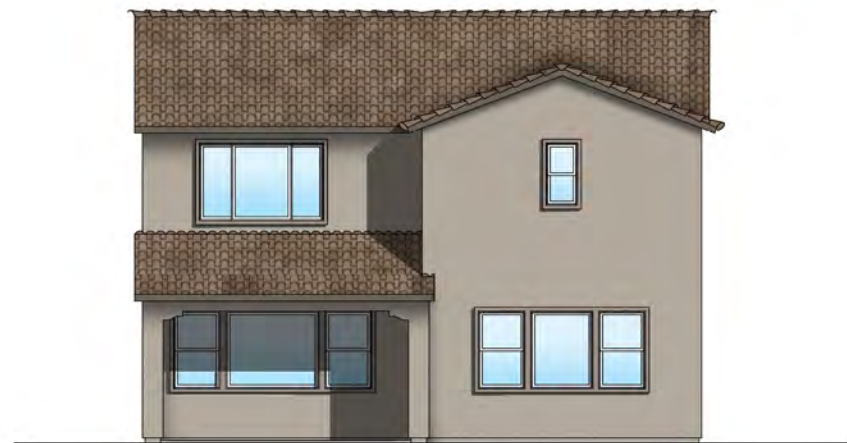


LEFT



RIGHT





REAR

TOTAL WALL AREA (FRONT)  
TOTAL WINDOW AREA (FRONT)

542 S.F.  
64 S.F. (11.8%)

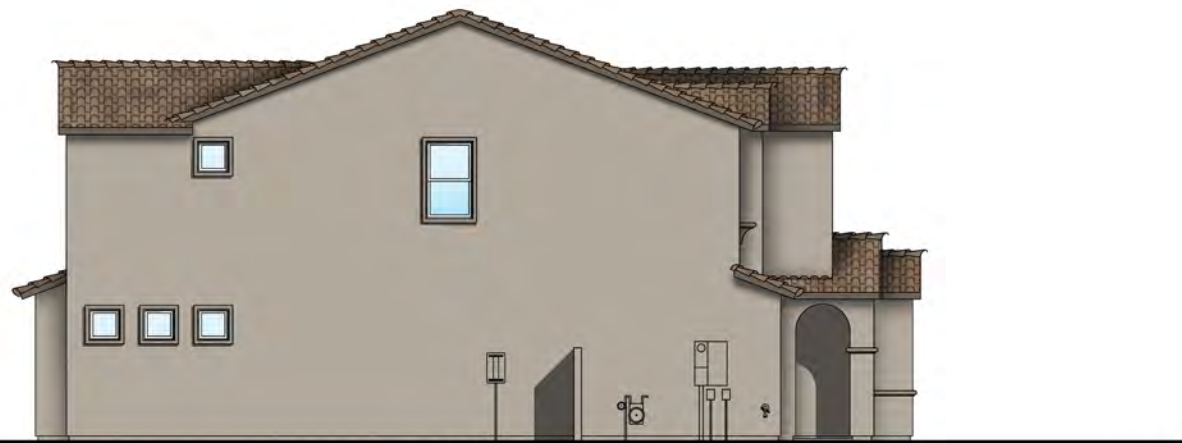
NOTE: ALL WINDOWS ADJACENT TO STREETS WILL HAVE A MIN. 2" DEEP  
OR 4" DEEP RECESS

TOTAL WALL AREA (STREETSIDE)  
TOTAL WINDOW AREA (STREETSIDE)

1008 S.F.  
83 S.F. (8.2%)



ENHANCED RIGHT - STREETSIDE



LEFT



RIGHT



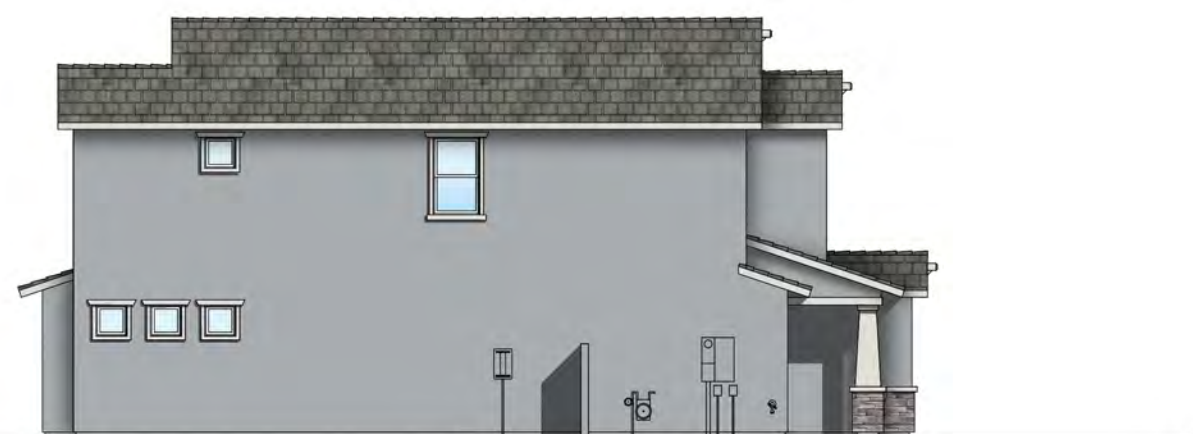


REAR

TOTAL WALL AREA (MINUS WINDOWS & DOORS)	480.5 S.F.
2ND FINISH MATERIAL (SIDING)	97 S.F. (20.2%)
3RD FINISH MATERIAL (STONE)	36 S.F. (7.5%)
TOTAL WALL AREA (FRONT)	586 S.F.
TOTAL WINDOW AREA (FRONT)	105.5 S.F. (18.0%)
NOTE: ALL WINDOWS ADJACENT TO STREETS WILL HAVE A MIN. 2" DEEP OR 4" DEEP RECESS	
TOTAL WALL AREA (STREETSIDE)	868 S.F.
TOTAL WINDOW AREA (STREETSIDE)	83 S.F. (9.6%)



ENHANCED RIGHT - STREETSIDE



LEFT



RIGHT





REAR

TOTAL WALL AREA (FRONT) 526 S.F.  
 TOTAL WINDOW AREA (FRONT) 76 S.F. (14.4%)

NOTE: ALL WINDOWS ADJACENT TO STREETS WILL HAVE A MIN. 2" DEEP OR 4" DEEP RECESS

TOTAL WALL AREA (STREETSIDE) 1072 S.F.  
 TOTAL WINDOW AREA (STREETSIDE) 79 S.F. (7.4%)



ENHANCED RIGHT - STREETSIDE



LEFT



RIGHT



DECORATIVE OUTLOOKERS

FASCIA  
(SW7553 FRAGILE BEAUTY)

SHINGLE SIDING

POPOUTS  
(SW7553 FRAGILE BEAUTY)

DECORATIVE STUCCOED BANDING

BATTERED COLUMN  
(SAND FINISH STUCCO)

COACH LIGHT

GARAGE DOOR  
(SW7040 SMOKEHOUSE)

EAGLE ROOF TILE  
(PONDEROSA TEXTURED FLAT #5808  
TOMBSTONE BLEND)

POLYURETHANE BRACE

SHINGLE GABLE SIDING  
(SW7700 OLDE WORLD GOLD)

BODY  
(SW6388 GOLDEN FLEECE)

ENVIRONMENTAL STONWORKS  
(TUSCAN LEDGE - CHABLIS)

FRONT DOOR  
(SW6013 BITTER CHOCOLATE)

TOTAL WALL AREA (MINUS WINDOWS & DOORS)	416 S.F.
2ND FINISH MATERIAL (SIDING)	69 S.F. (16.7%)
3RD FINISH MATERIAL (STONE)	36 S.F. (8.6%)
TOTAL WALL AREA (FRONT)	522 S.F.
TOTAL WINDOW AREA (FRONT)	106 S.F. (20.3%)

NOTE: ALL WINDOWS ADJACENT TO STREETS WILL HAVE A MIN. 2" DEEP OR 4" DEEP RECESS

TOTAL WALL AREA (STREETSIDE)	1147 S.F.
TOTAL WINDOW AREA (STREETSIDE)	79 S.F. (6.9%)

REAR

ENHANCED RIGHT - STREETSIDE

LEFT

RIGHT



EAGLE ROOF TILE  
(PONDEROSA TEXTURED FLAT #5809  
LOMITA RANGE)

FASCIA  
(SW7515 HOMESTEAD BROWN)

BODY  
(SW7031 MEGA GREIGE)

SCULPTED FOAM CORBELS  
WITH ARCHED SOFFIT  
COACH LIGHT

RUSTIC VILLA BLEND STONE WAINSCOT

GARAGE DOOR  
(SW6074 SPALDING GRAY)

GABLE LAP SIDING  
(SW9183 DARK CLOVE)

POLYURETHANE CORBELS

POPOUTS  
(SW9173 SHITAKE)

DECORATIVE SHUTTERS  
(SW9183 DARK CLOVE)

ENVIRONMENTAL STONEWORKS  
(VILLA BLEND - CHAMPAGNE)

FRONT DOOR  
(SW9183 DARK CLOVE)

TOTAL WALL AREA (MINUS WINDOWS & DOORS) 491 S.F.  
2ND FINISH MATERIAL (STONE) 81 S.F. (16.5%)  
TOTAL WALL AREA (FRONT) 548 S.F.  
TOTAL WINDOW AREA (FRONT) 57 S.F. (10.4%)

NOTE: ALL WINDOWS ADJACENT TO STREETS WILL HAVE A MIN. 2" DEEP  
OR 4" DEEP RECESS

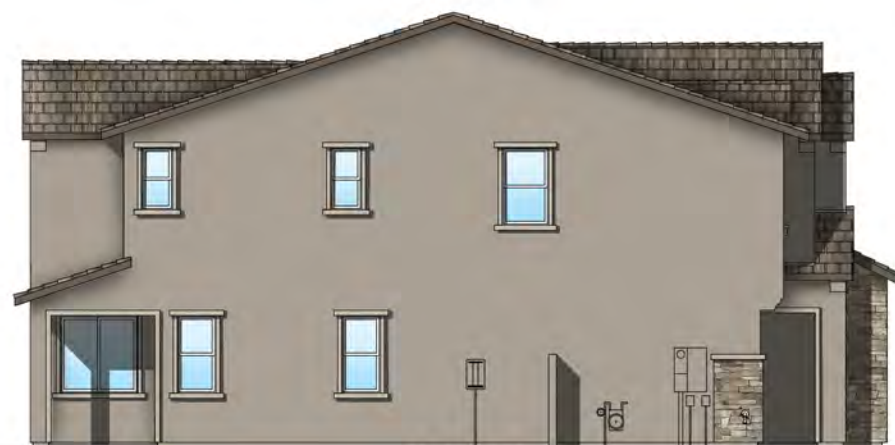
TOTAL WALL AREA (STREETSIDE) 1239 S.F.  
TOTAL WINDOW AREA (STREETSIDE) 79 S.F. (6.4%)



REAR



ENHANCED RIGHT - STREETSIDE

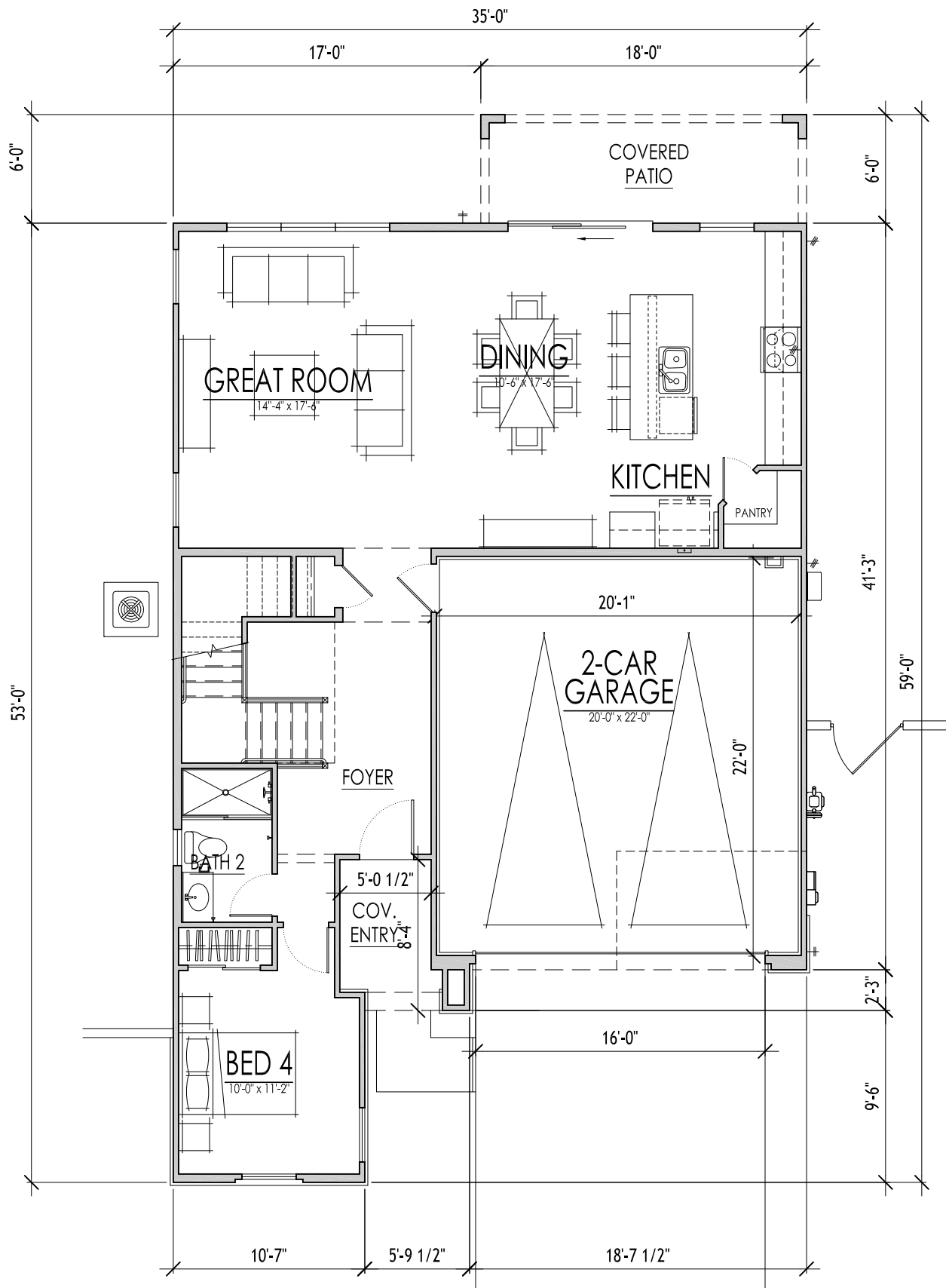


LEFT



RIGHT





FIRST FLOOR PLAN F - FRENCH COUNTRY

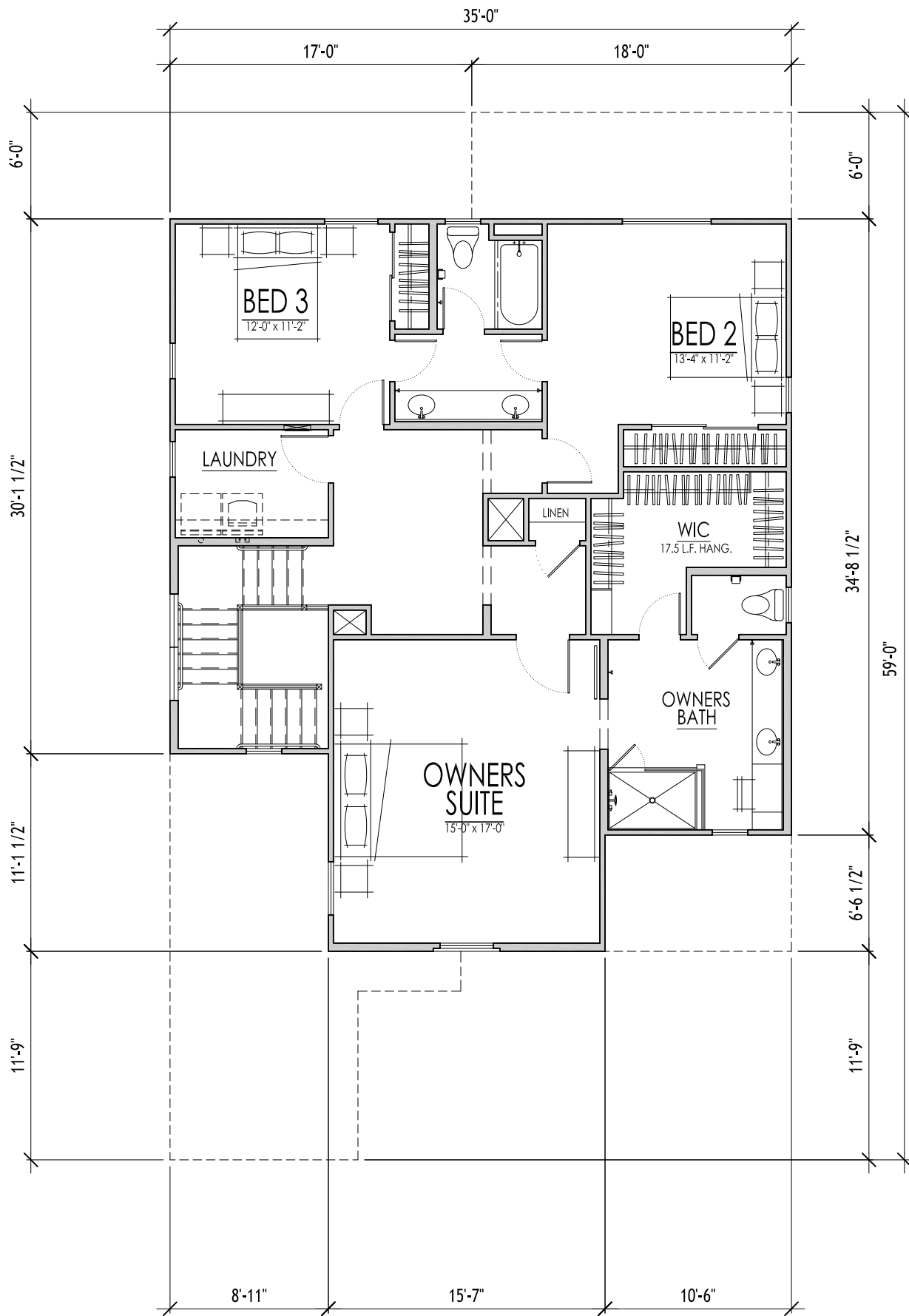
2,246 S.F.

1/8" = 1'-0"

PLAN 3522

FIRST FLOOR PLAN





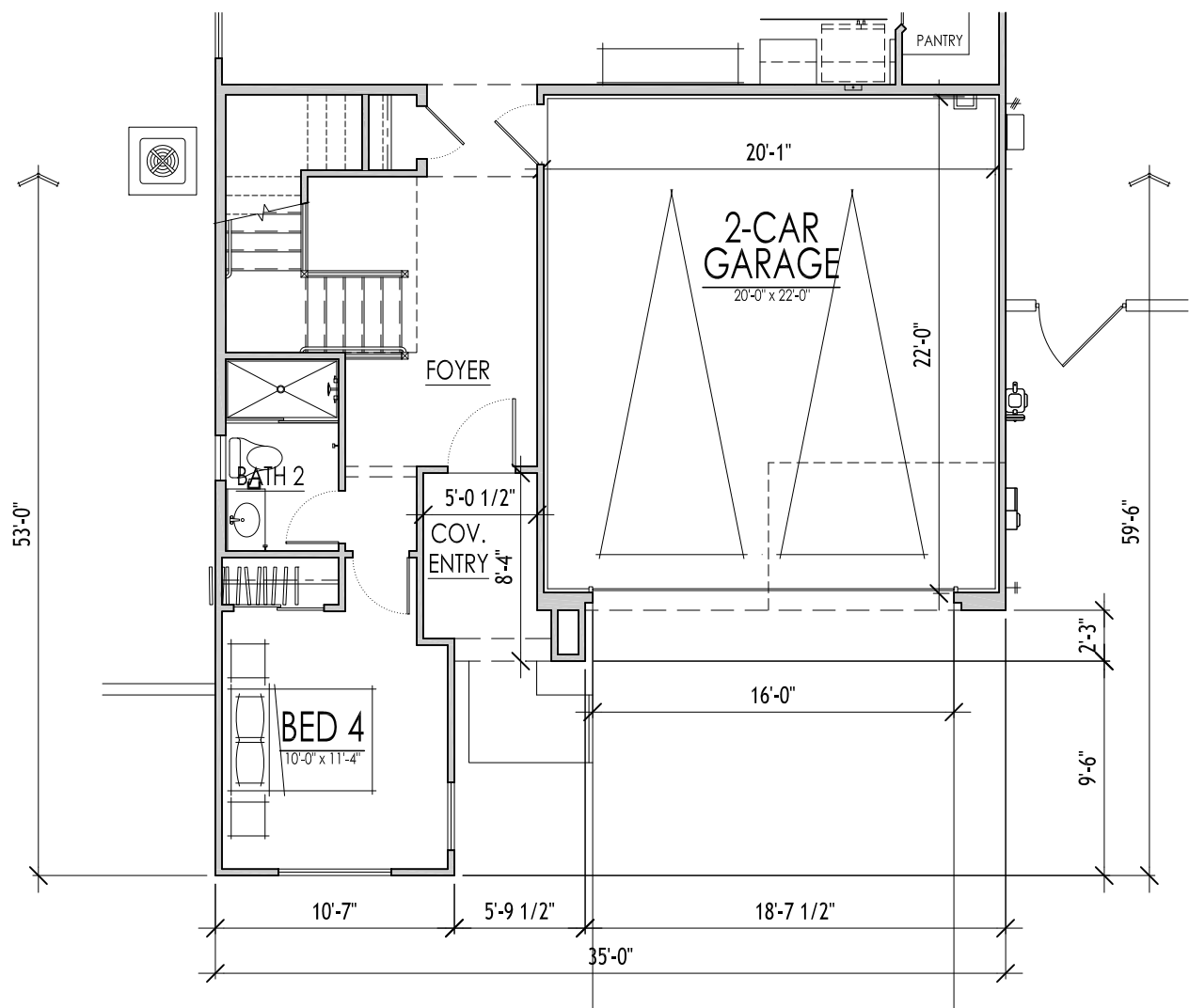
SECOND FLOOR PLAN F - FRENCH COUNTRY

1/8" = 1'-0"

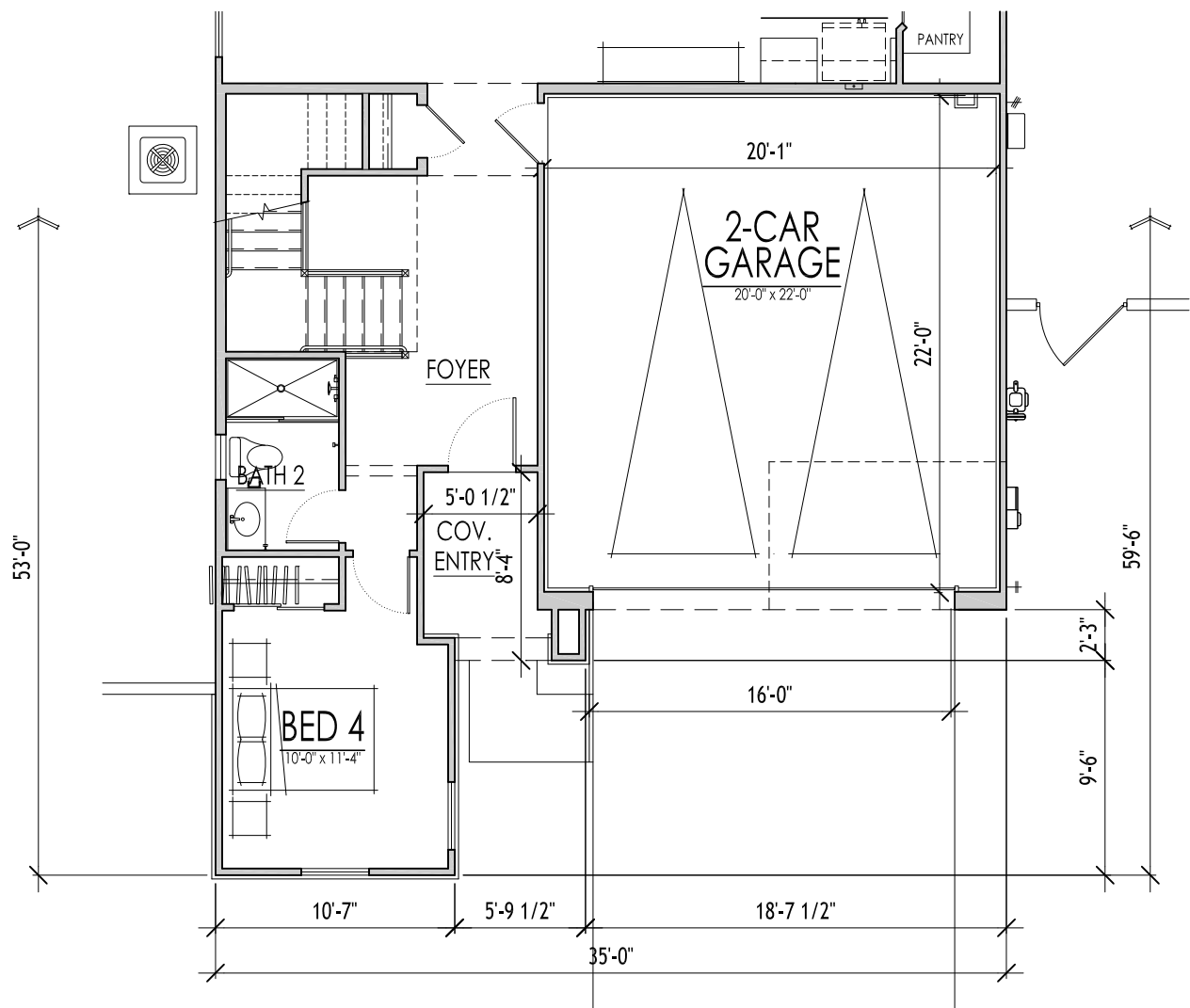
PLAN 3522

SECOND FLOOR PLAN





PARTIAL 1ST FLOOR G - ITALIANATE



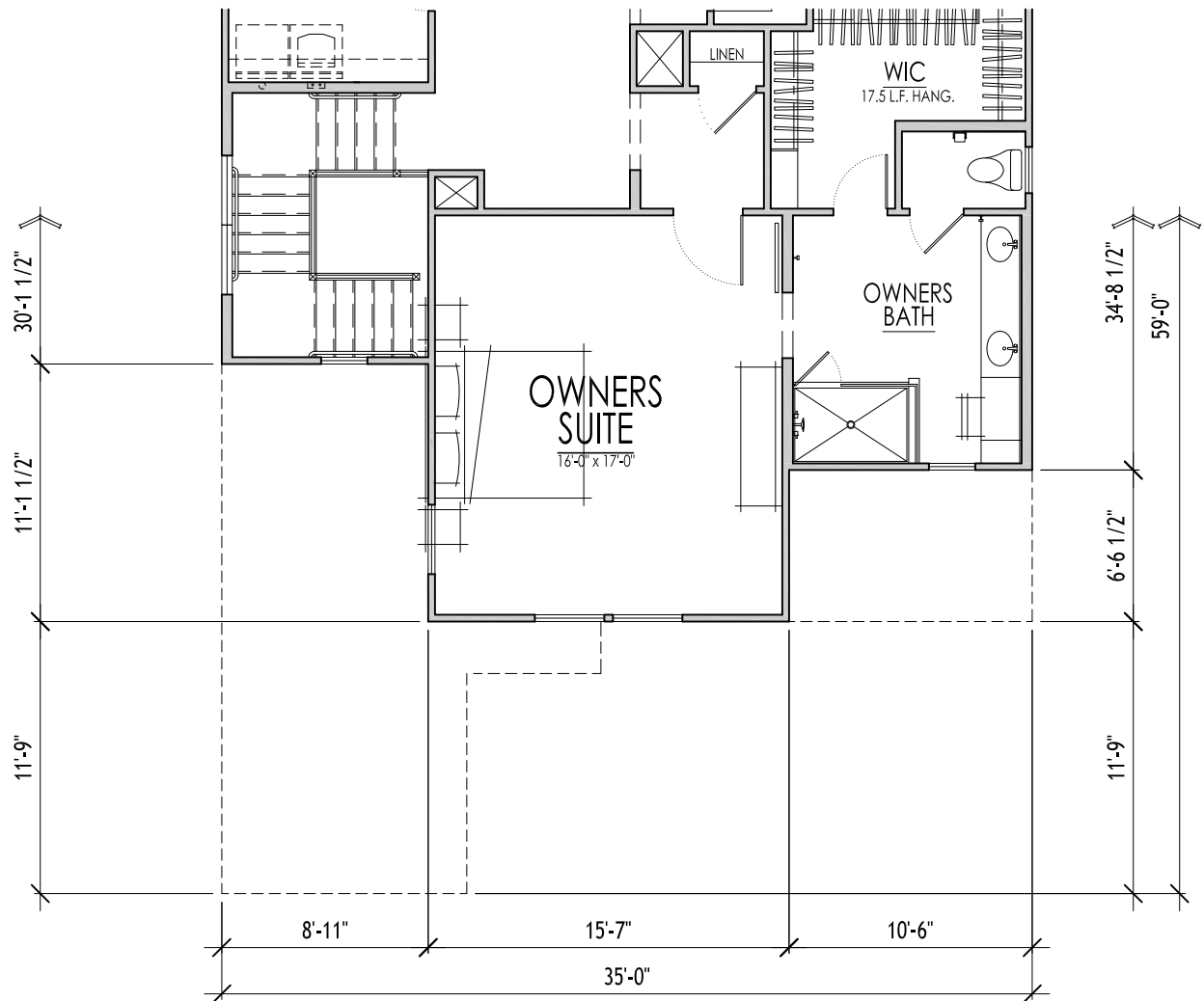
PARTIAL 1ST FLOOR PLANE - TUSCAN

1/8" = 1'-0"

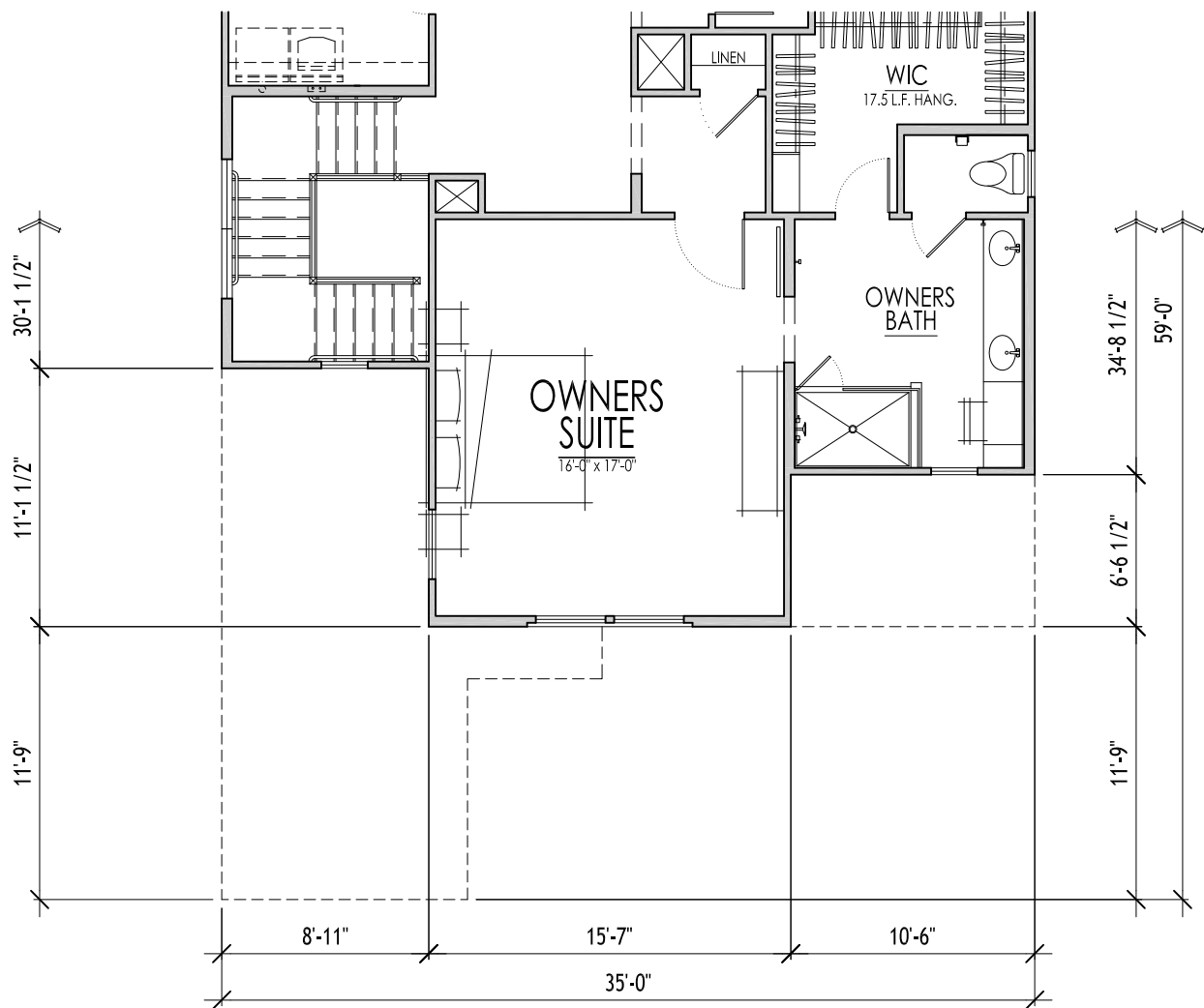
## PLAN 3522

PARTIAL FIRST FLOOR PLANS - E AND G





PARTIAL 2ND FLOOR PLAN G - ITALIANATE



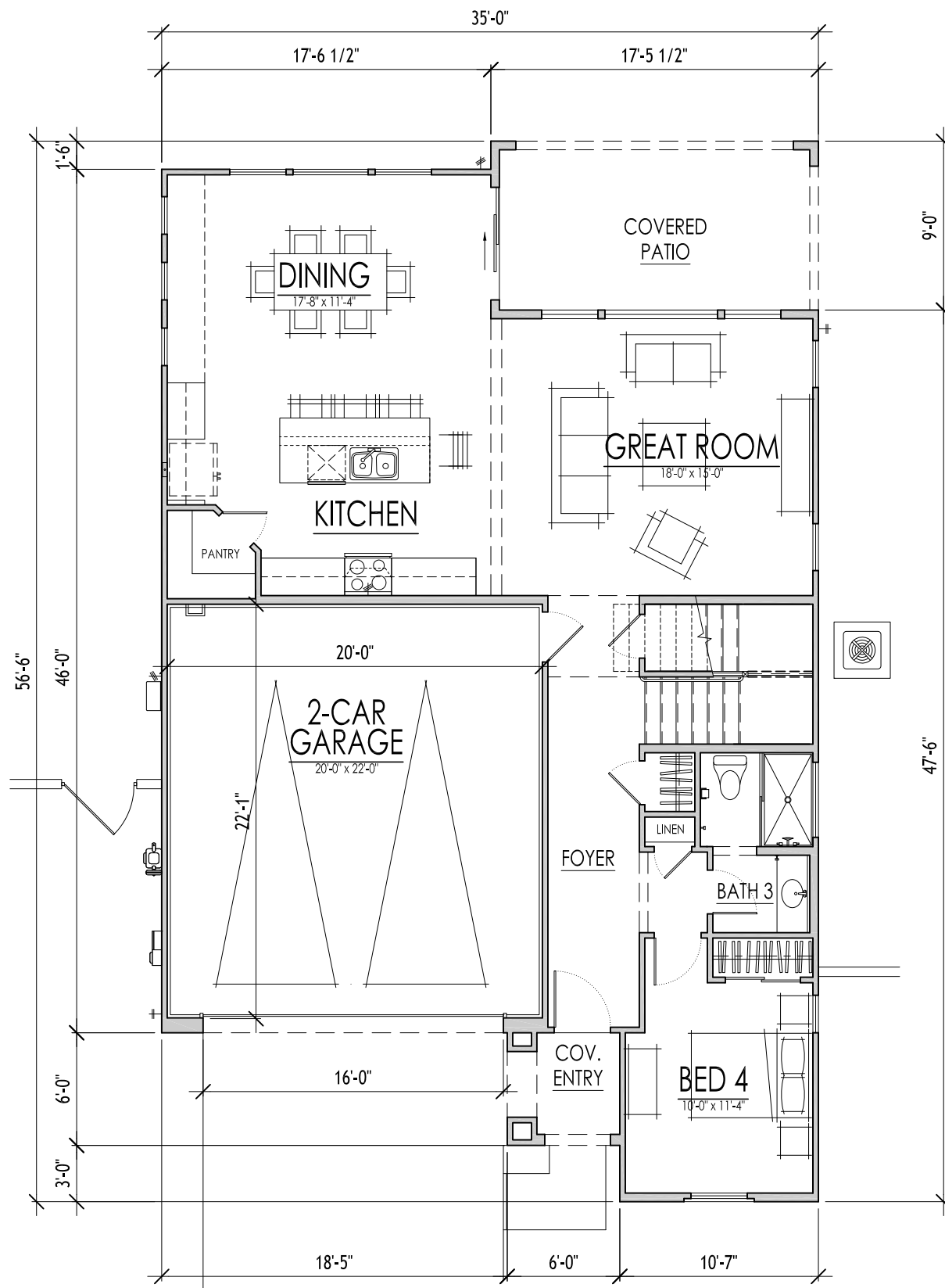
PARTIAL 2ND FLOOR PLAN E - TUSCAN

1/8" = 1'-0"

## PLAN 3522

PARTIAL SECOND FLOOR PLANS - E AND G





FIRST FLOOR PLAN A - SPANISH COLONIAL

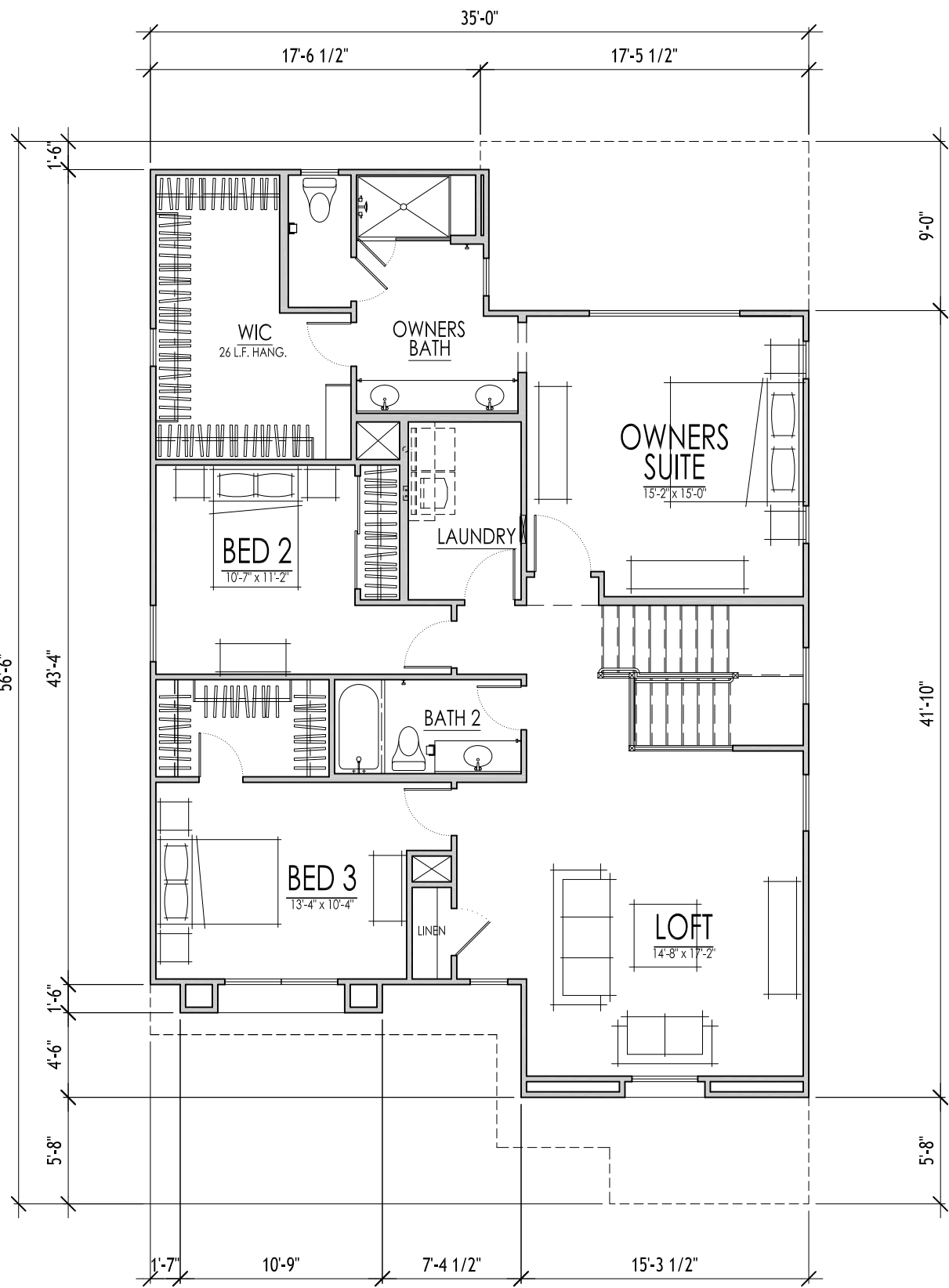
2,549 S.F.

1/8" = 1'-0"

PLAN 3524

FIRST FLOOR PLAN



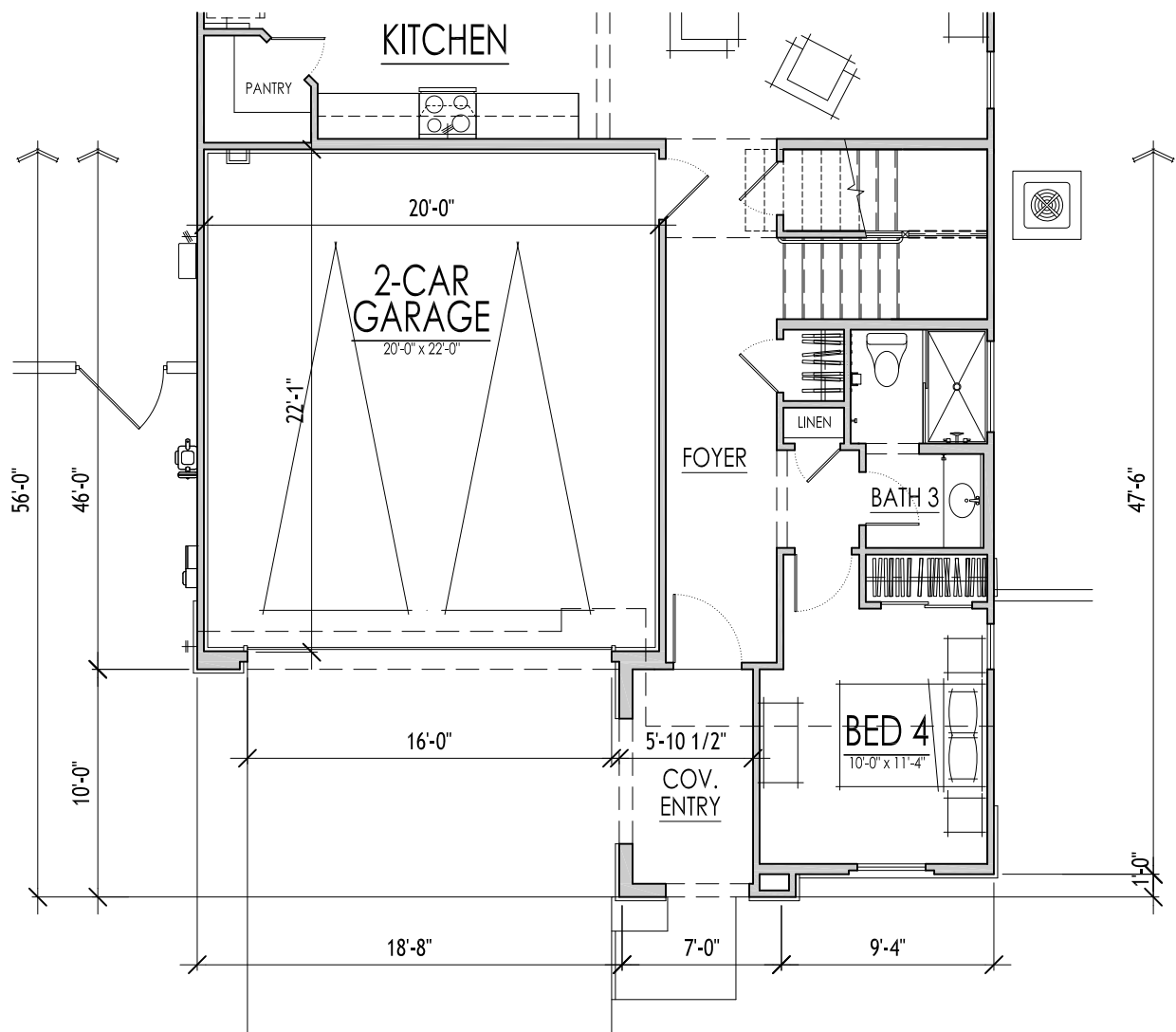


SECOND FLOOR PLAN A - SPANISH COLONIAL

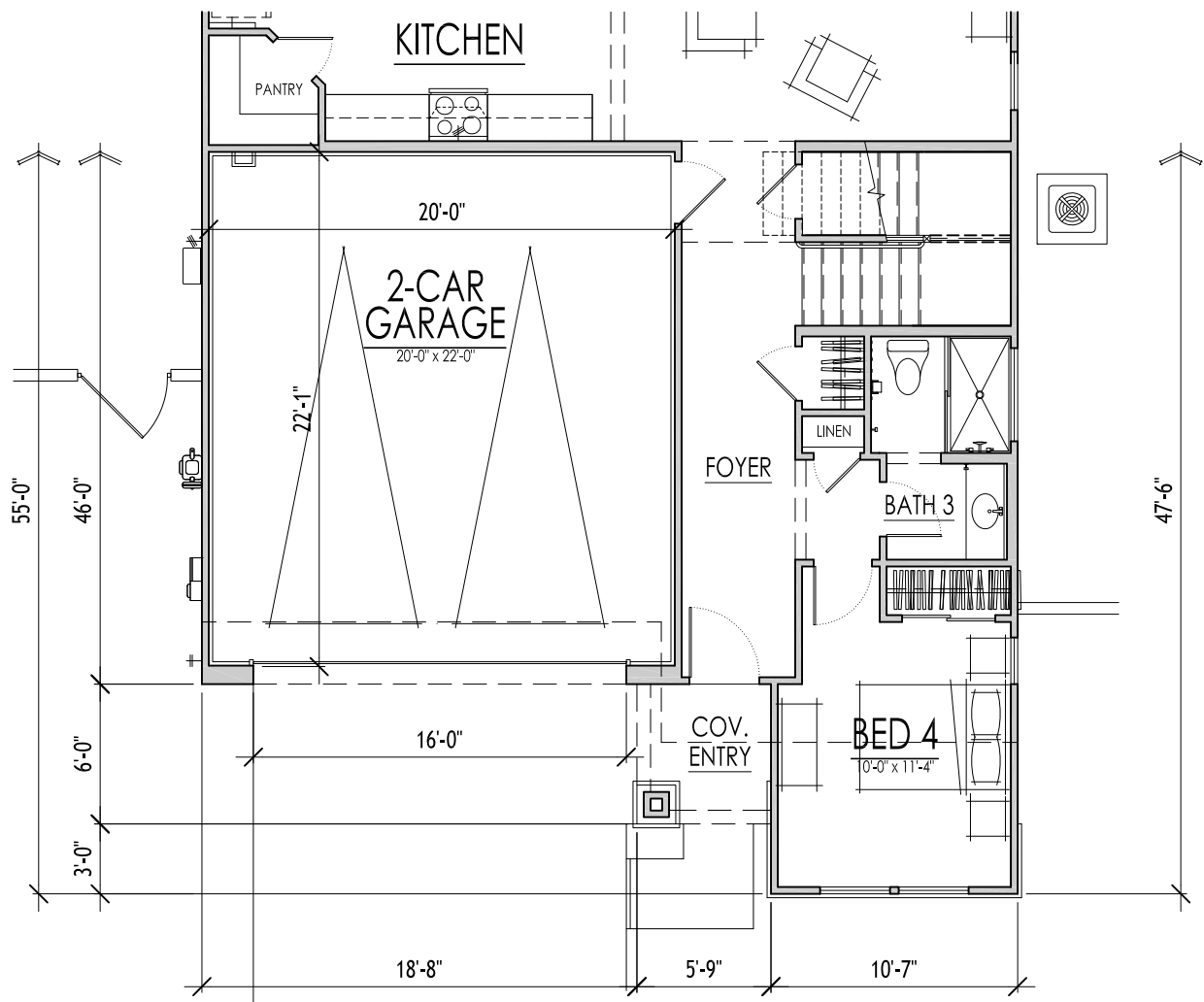
1/8" = 1'-0"

PLAN 3524  
SECOND FLOOR PLAN





PARTIAL 1ST FLOOR F - FRENCH COUNTRY



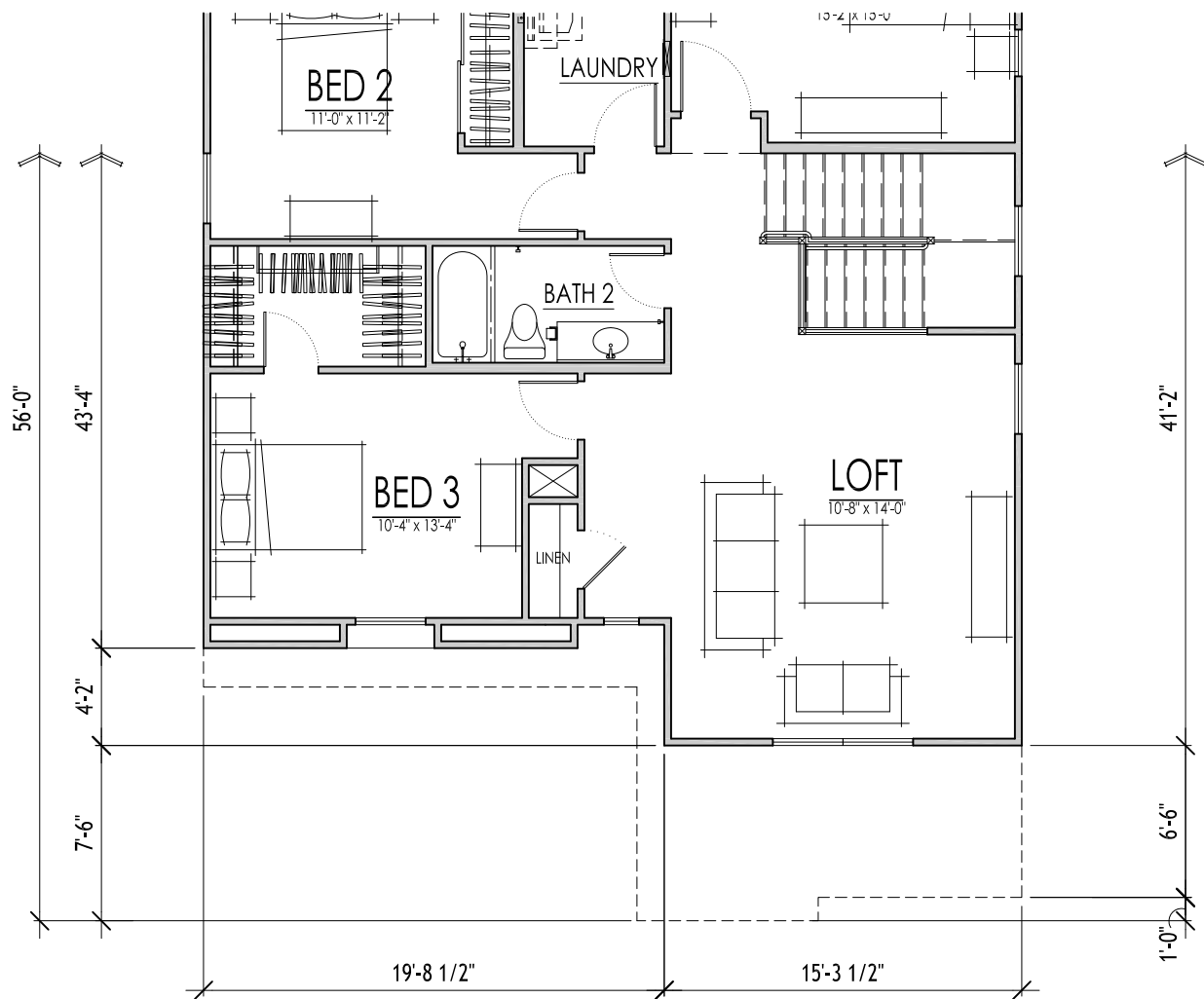
PARTIAL 1ST FLOOR PLAN C - CRAFTSMAN

1/8" = 1'-0"

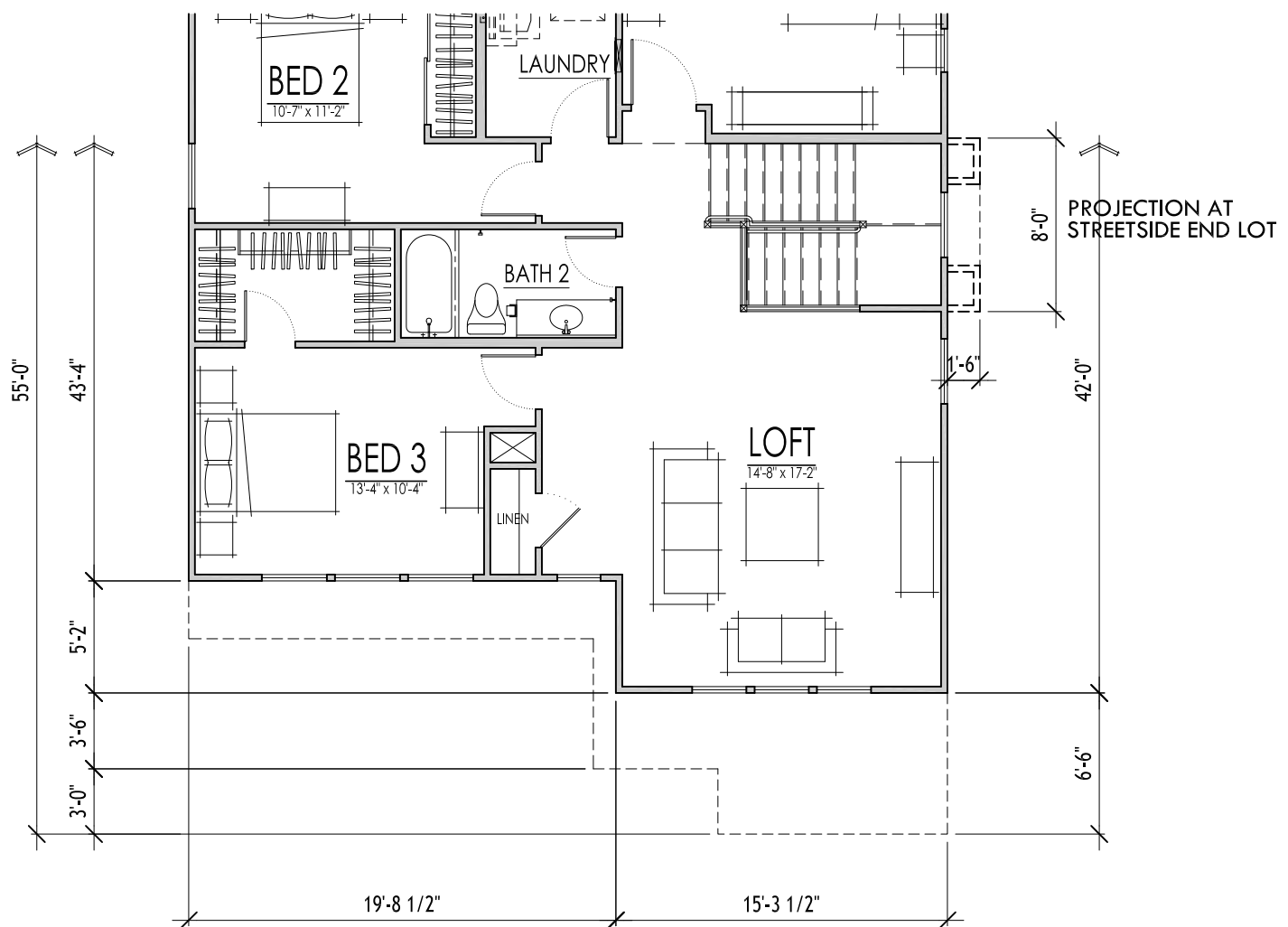
# PLAN 3524

PARTIAL FIRST FLOOR PLANS - C AND F





PARTIAL 2ND FLOOR PLAN F - FRENCH COUNTRY



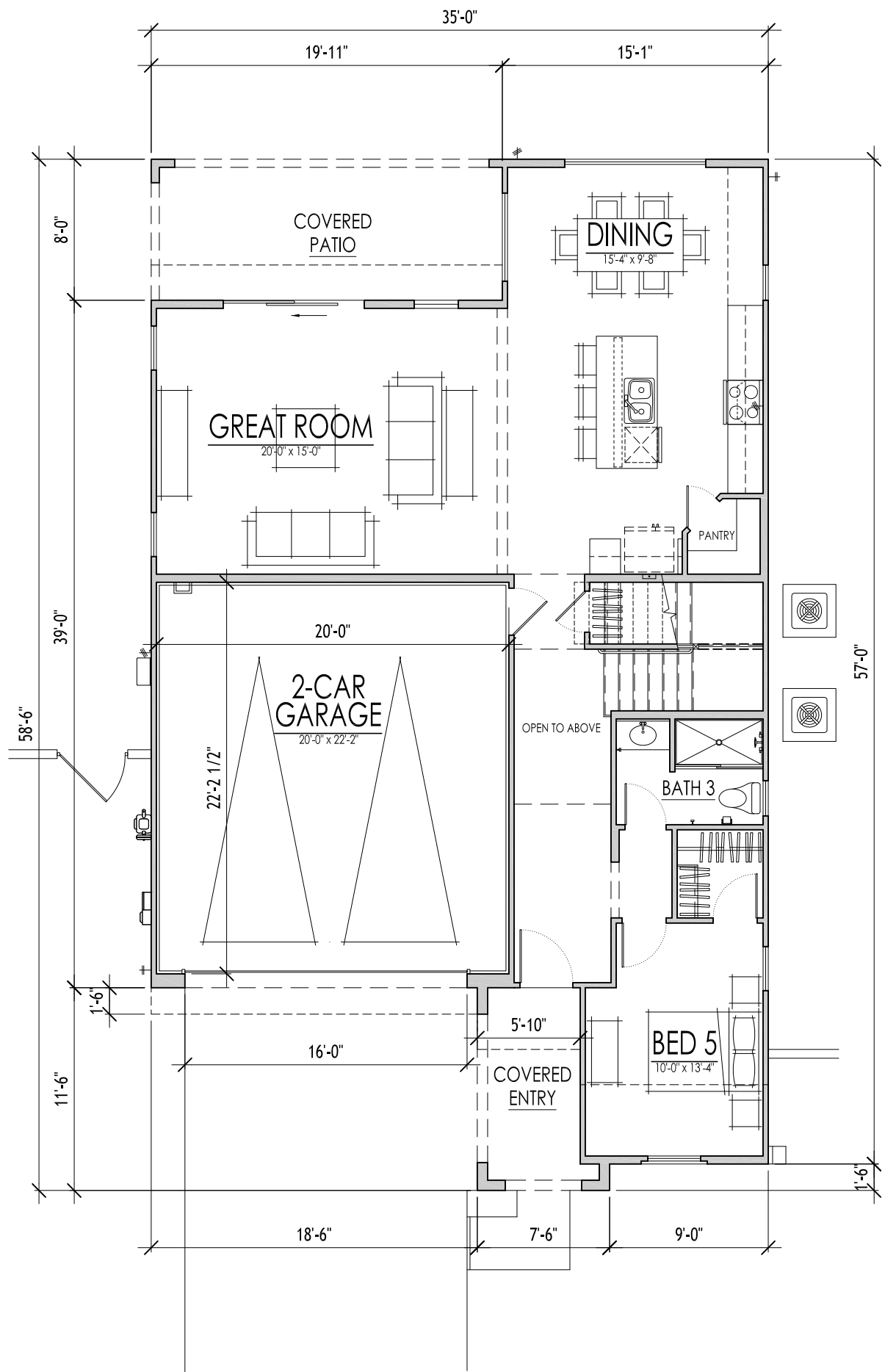
PARTIAL 2ND FLOOR PLAN C - CRAFTSMAN

1/8" = 1'-0"

## PLAN 3524

PARTIAL SECOND FLOOR PLANS - C AND F





FIRST FLOOR PLAN A - SPANISH COLONIAL

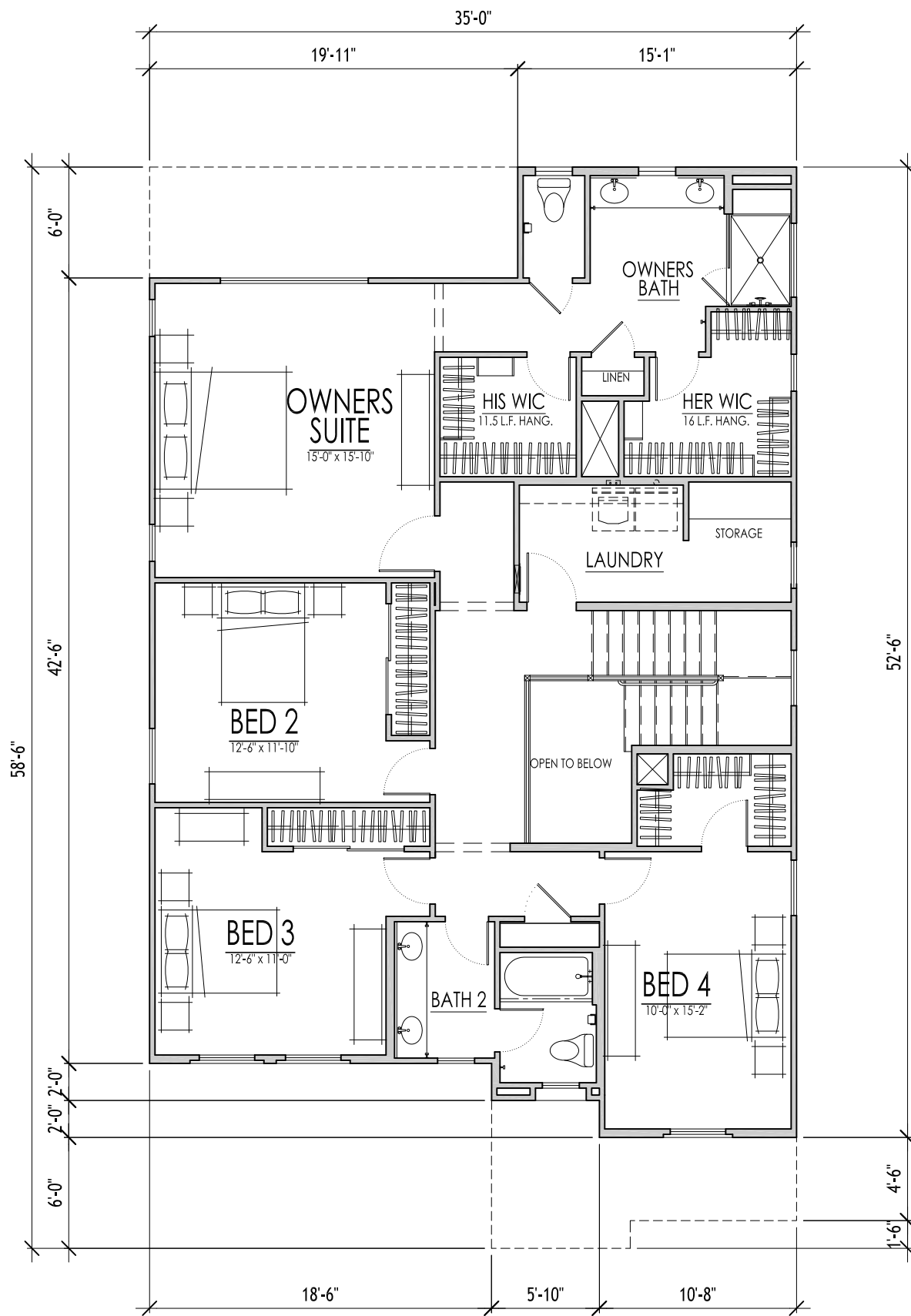
2,679 S.F.

1/8" = 1'-0"

PLAN 3526

FIRST FLOOR PLAN



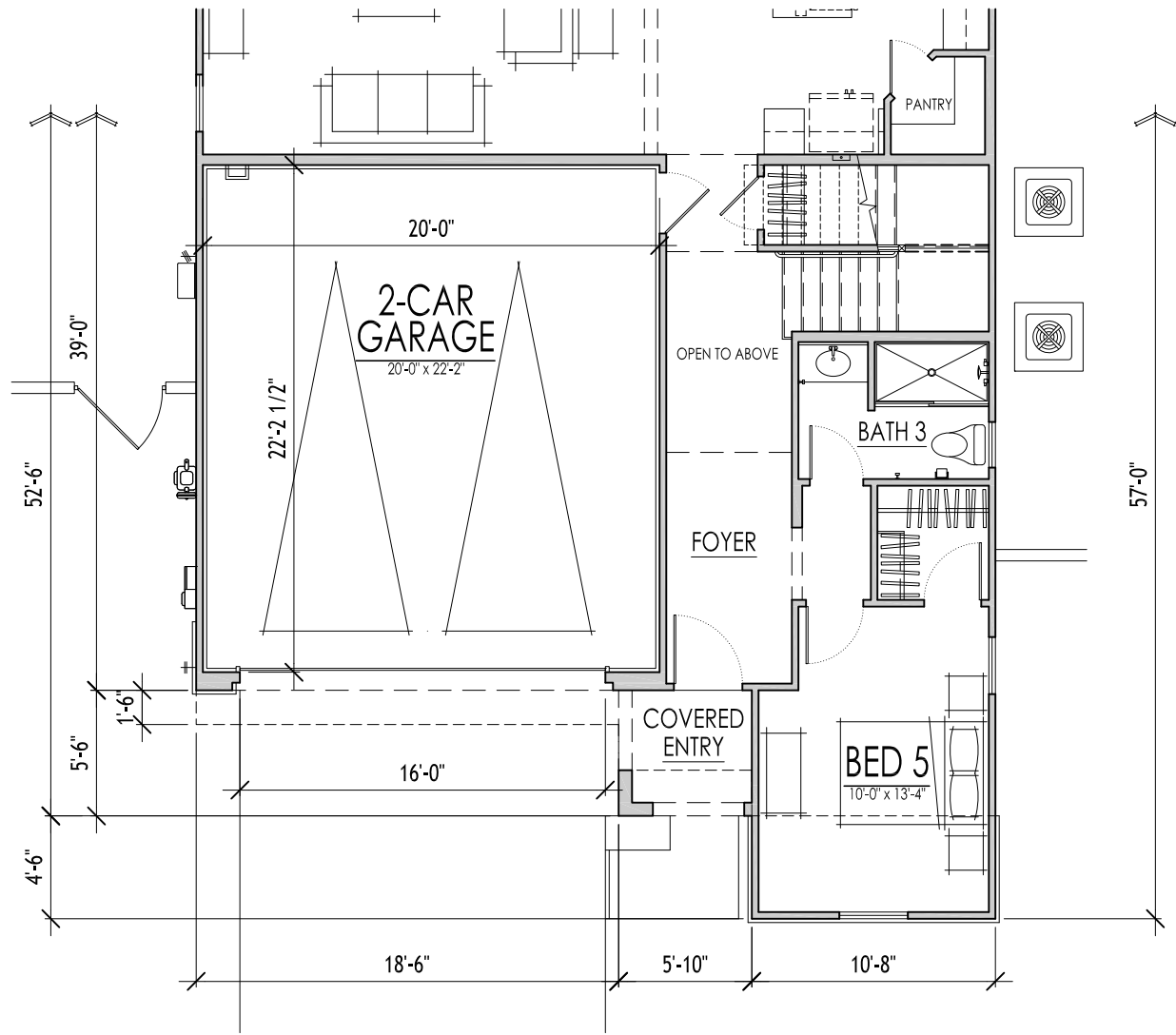


SECOND FLOOR PLAN A - SPANISH COLONIAL

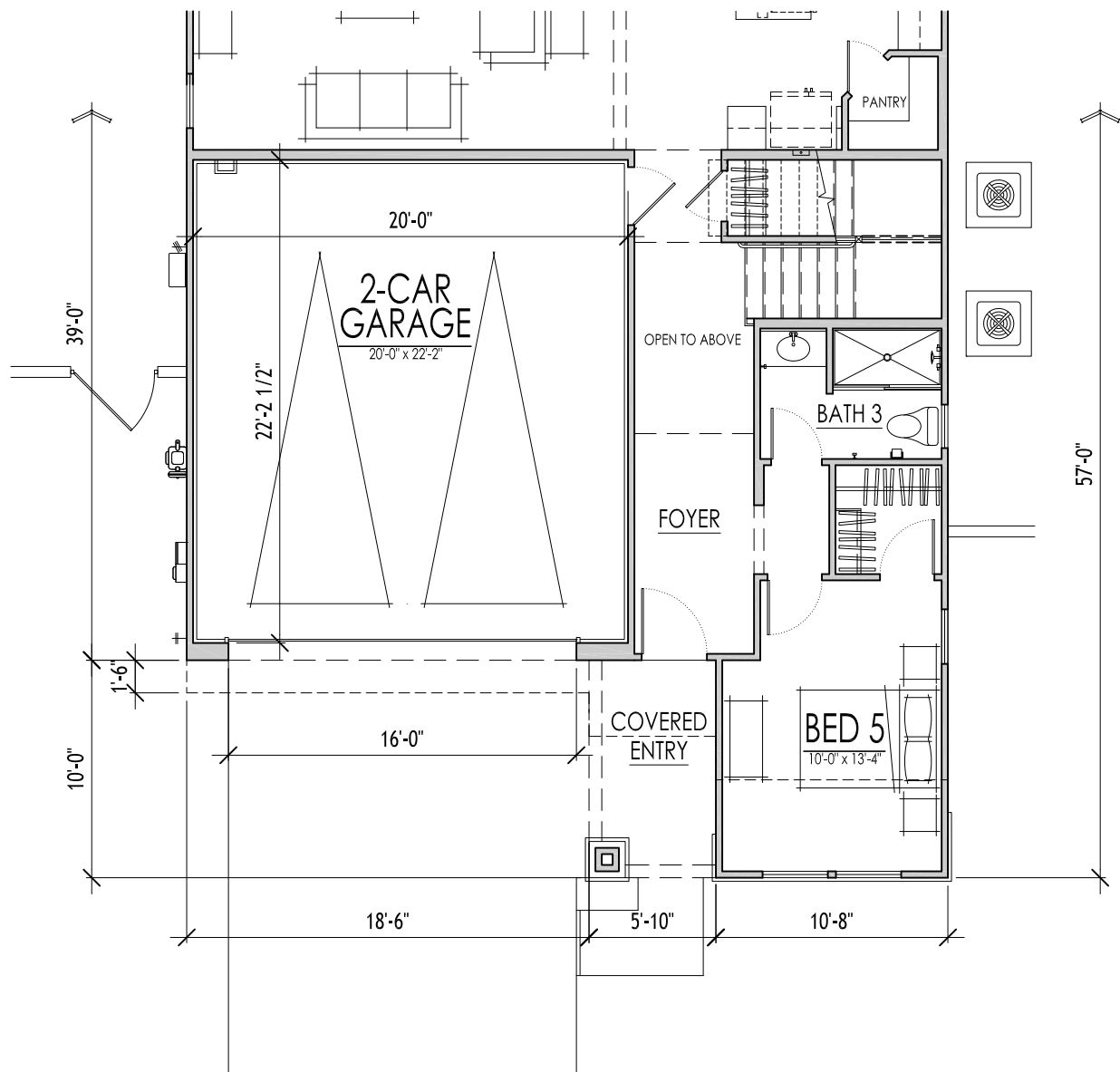
1/8" = 1'-0"

PLAN 3526

SECOND FLOOR PLAN



PARTIAL 1ST FLOOR F - FRENCH COUNTRY



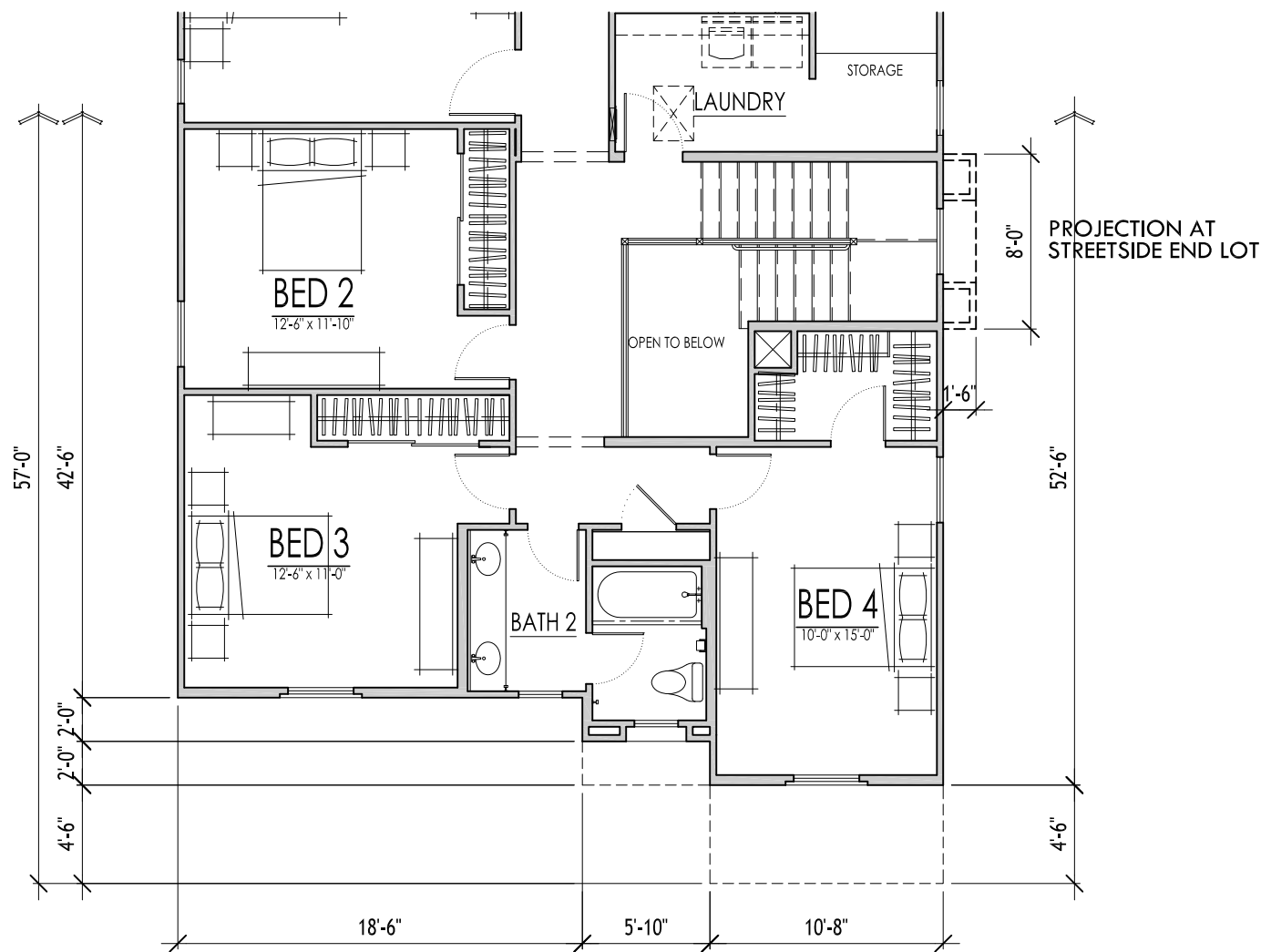
PARTIAL 1ST FLOOR PLAN C - CRAFTSMAN

1/8" = 1'-0"

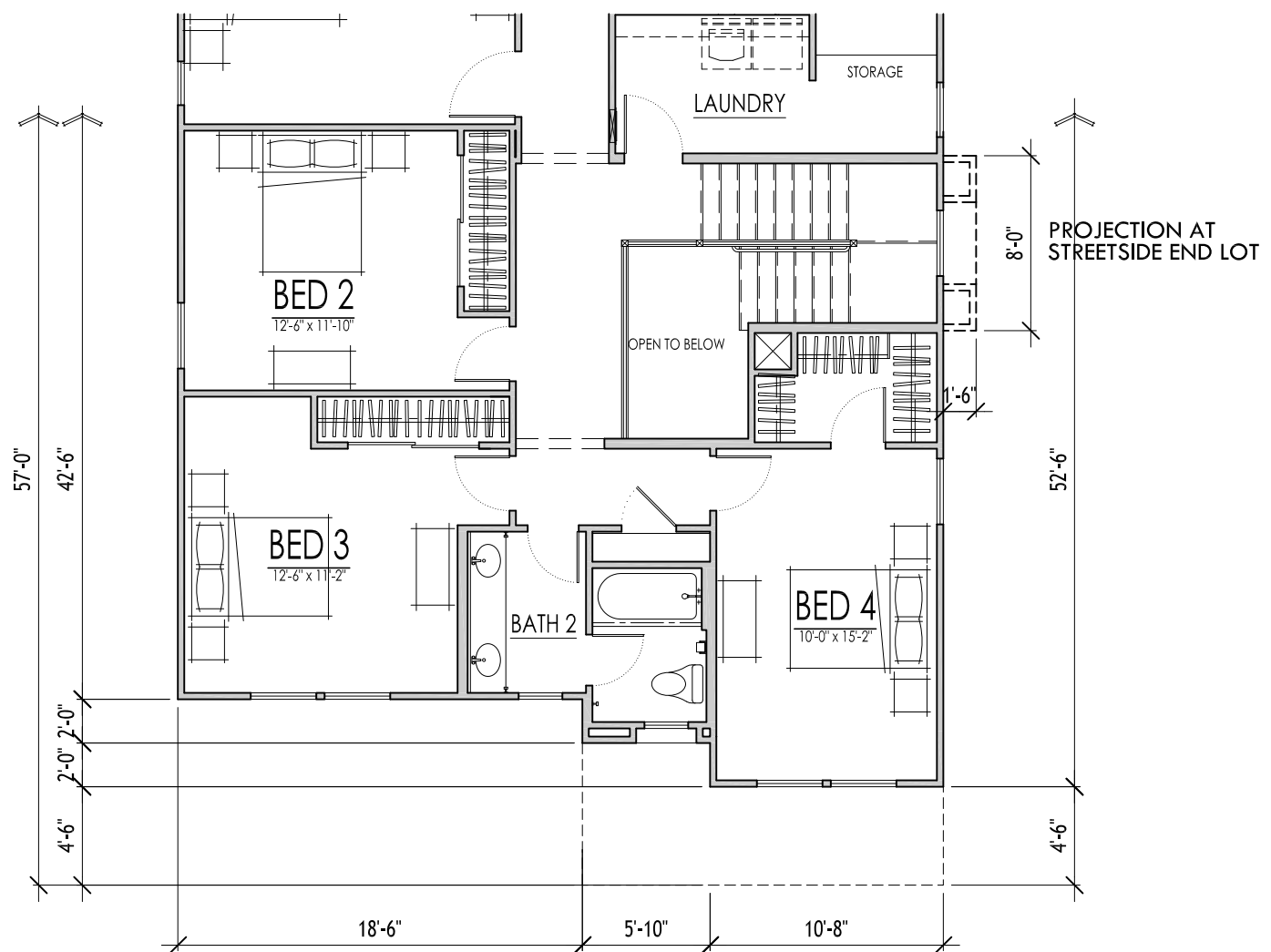
## PLAN 3526

PARTIAL FIRST FLOOR PLANS - C AND F





PARTIAL 2ND FLOOR PLAN - FRENCH COUNTRY



PARTIAL 2ND FLOOR PLAN C - CRAFTSMAN

1/8" = 1'-0"

# PLAN 3526

PARTIAL SECOND FLOOR PLANS - C AND F

# TYPICAL PLOT PLAN

## LOT INFORMATION

ZONING: RSL 2.5 PAD PAD  
 TYP. LOT SIZE: 45' MIN. x 86'  
 TYP. LOT AREA: 3870 S.F.

## BLDG. SETBACKS

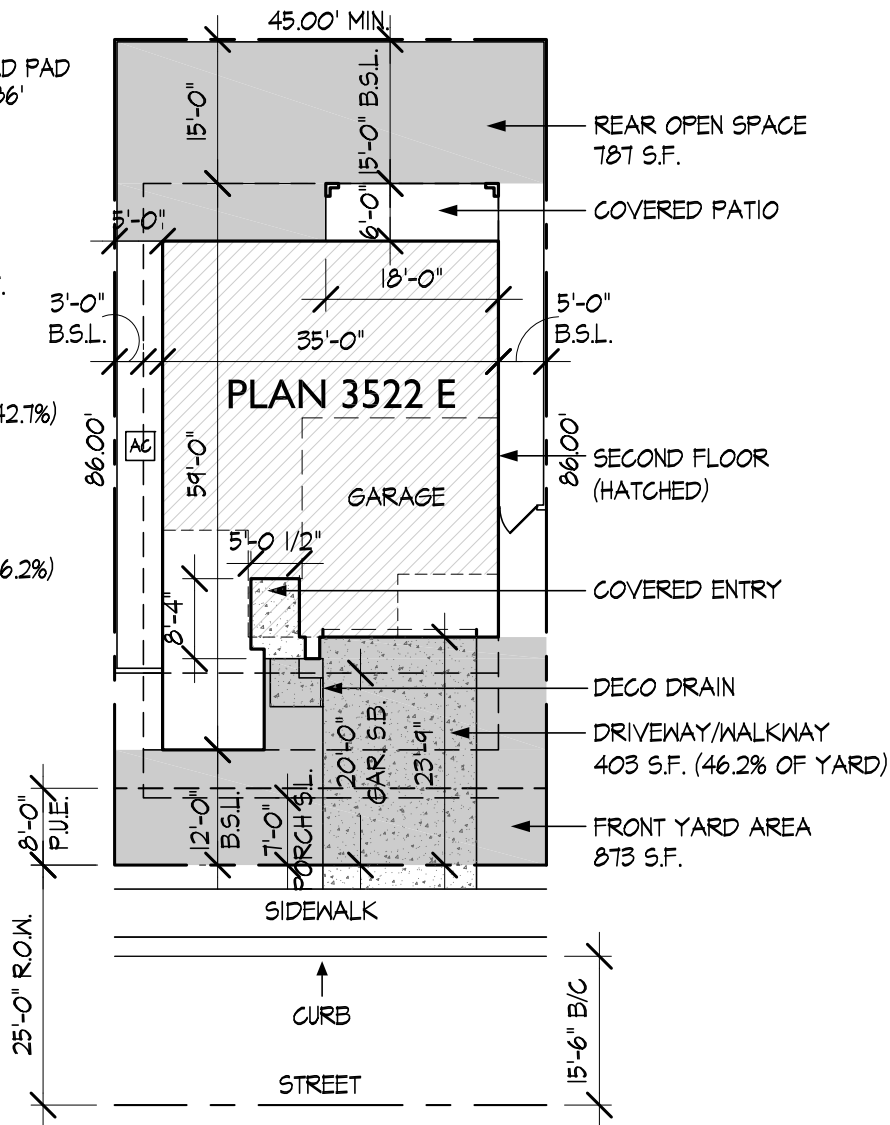
FRONT LIVABLE: 12 FT.  
 FRONT PORCH: 7 FT.  
 FRONT GARAGE: 20 FT.  
 SIDES: 3 FT. / 5 FT.  
 REAR: 15 FT.

## LOT COVERAGE ALLOWED

LOT COVERAGE: 80% MAX.  
 3522E LOT COVERAGE: 1689 S.F. (42.7%)

## OPEN SPACE

OPEN SPACE REQ.: 400 S.F.  
 REAR OPEN SPACE PROVIDED: 787 S.F.  
 TOTAL FRONT YARD: 873 S.F.  
 DRIVEWAY/WALKWAY: 403 S.F. (46.2%)  
 TOTAL OPEN SPACE PROVIDED  
 (NOT INCLUDING DRIVEWAY/WALK): 1,257 S.F.



## 3522 MAX FOOTPRINT - E

LIVABLE - TOTAL: 2,246 S.F.  
 LIVABLE - 1ST FL.: 1,067 S.F.  
 2-CAR GARAGE: 469 S.F.  
 COVERED PATIO: 108 S.F.  
 COVERED ENTRY: 45 S.F.  
 TOTAL FOOTPRINT: 1,689 S.F.

## HAWES CROSSING CASITA HOMES - VILLAGE 5

**LENNAR**

1665 W. Alameda Drive, Suite 130, Tempe, AZ 85282

MESA, AZ

SCALE: 1"=20'-0"

DATE: 1.13.25

PLAN 3522 E



# TYPICAL PLOT PLAN

## LOT INFORMATION

ZONING: RSL 2.5 PAD PAD  
 TYP. LOT SIZE: 45' MIN. x 86'  
 TYP. LOT AREA: 3,870 S.F.

## BLDG. SETBACKS

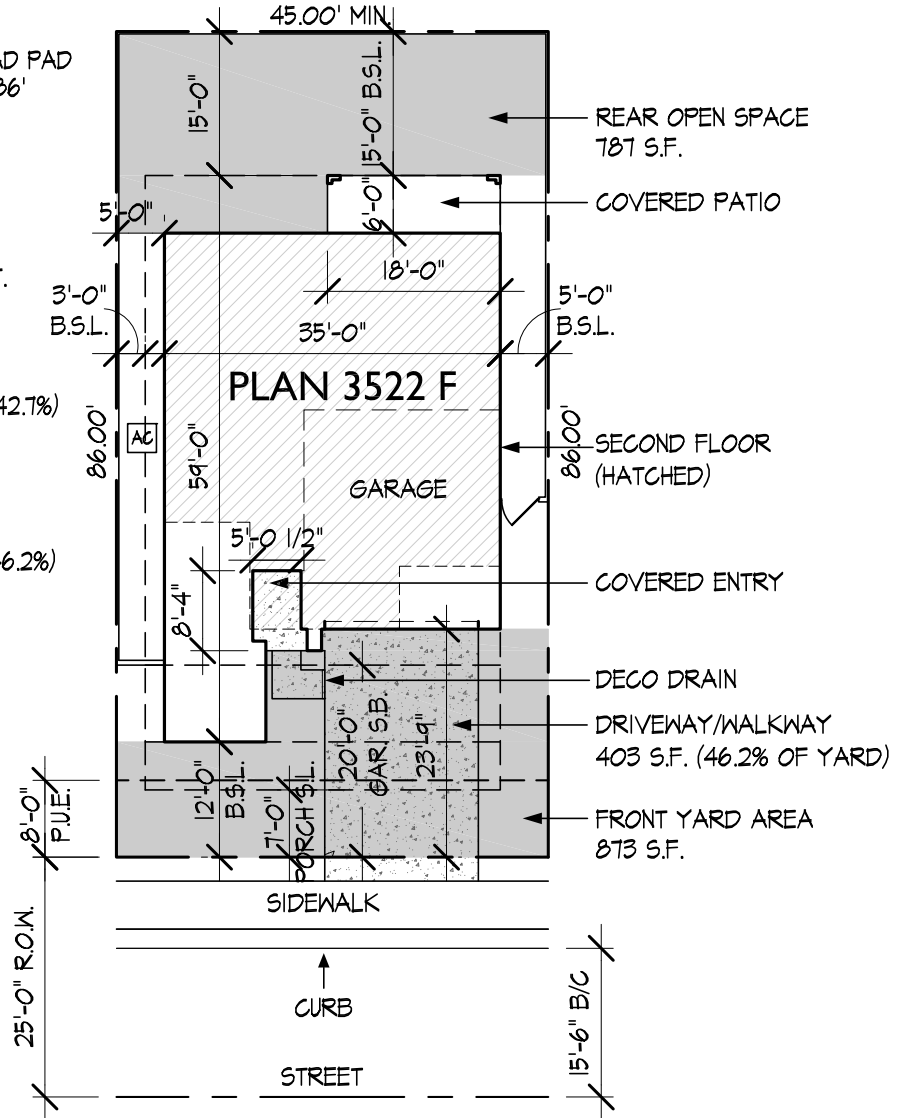
FRONT LIVABLE: 12 FT.  
 FRONT PORCH: 7 FT.  
 FRONT GARAGE: 20 FT.  
 SIDES: 3 FT. / 5 FT.  
 REAR: 15 FT.

## LOT COVERAGE ALLOWED

LOT COVERAGE: 80% MAX.  
 3522F LOT COVERAGE: 1,689 S.F. (42.7%)

## OPEN SPACE

OPEN SPACE REQ.: 400 S.F.  
 REAR OPEN SPACE PROVIDED: 787 S.F.  
 TOTAL FRONT YARD: 873 S.F.  
 DRIVEWAY/WALKWAY: 403 S.F. (46.2%)  
 TOTAL OPEN SPACE PROVIDED  
 (NOT INCLUDING DRIVEWAY/WALK): 1,257 S.F.



## 3522 MAX FOOTPRINT - F

LIVABLE - TOTAL: 2,246 S.F.  
 LIVABLE - 1ST FL.: 1,067 S.F.  
 2-CAR GARAGE: 469 S.F.  
 COVERED PATIO: 108 S.F.  
 COVERED ENTRY: 45 S.F.  
 TOTAL FOOTPRINT: 1,689 S.F.

## HAWES CROSSING CASITA HOMES - VILLAGE 5

**LENNAR**

1665 W. Alameda Drive, Suite 130, Tempe, AZ 85282

MESA, AZ

SCALE: 1"=20'-0"

DATE: 1.13.25

PLAN 3522 F

# TYPICAL PLOT PLAN

## LOT INFORMATION

ZONING: RSL 2.5 PAD PAD  
 TYP. LOT SIZE: 45' MIN. x 86'  
 TYP. LOT AREA: 3,870 S.F.

## BLDG. SETBACKS

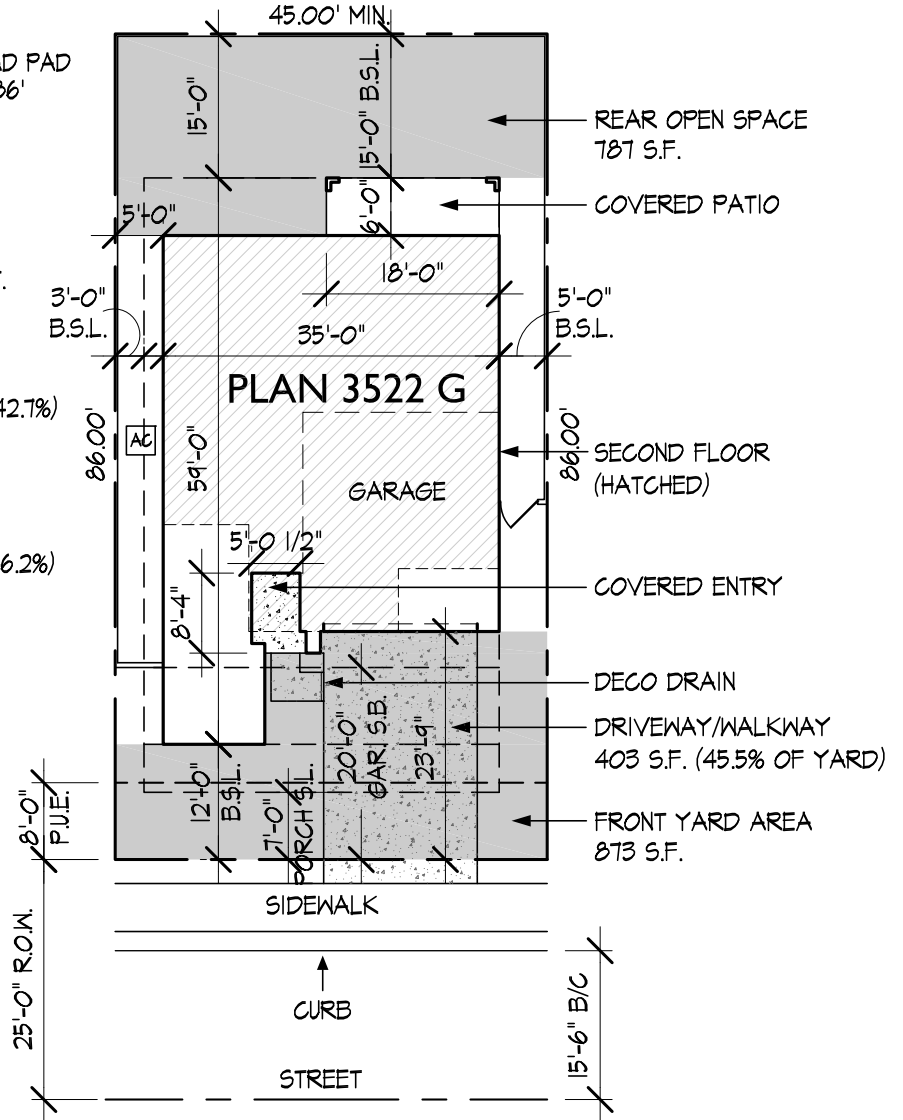
FRONT LIVABLE: 12 FT.  
 FRONT PORCH: 7 FT.  
 FRONT GARAGE: 20 FT.  
 SIDES: 3 FT. / 5 FT.  
 REAR: 15 FT.

## LOT COVERAGE ALLOWED

LOT COVERAGE: 80% MAX.  
 3522G LOT COVERAGE: 1689 S.F. (42.7%)

## OPEN SPACE

OPEN SPACE REQ.: 400 S.F.  
 REAR OPEN SPACE PROVIDED: 787 S.F.  
 TOTAL FRONT YARD: 873 S.F.  
 DRIVEWAY/WALKWAY: 403 S.F. (46.2%)  
 TOTAL OPEN SPACE PROVIDED  
 (NOT INCLUDING DRIVEWAY/WALK): 1,257 S.F.



## 3522 MAX FOOTPRINT - G

LIVABLE - TOTAL: 2,246 S.F.  
 LIVABLE - 1ST FL.: 1,067 S.F.  
 2-CAR GARAGE: 469 S.F.  
 COVERED PATIO: 108 S.F.  
 COVERED ENTRY: 45 S.F.  
 TOTAL FOOTPRINT: 1,689 S.F.

## HAWES CROSSING CASITA HOMES - VILLAGE 5

**LENNAR**

1665 W. Alameda Drive, Suite 130, Tempe, AZ 85282

MESA, AZ

SCALE: 1"=20'-0"

DATE: 1.13.25

PLAN 3522 G



## TYPICAL PLOT PLAN

## LOT INFORMATION

ZONING: RSL 2.5 PAD PAD  
TYP. LOT SIZE: 45' MIN. x 86'  
TYP. LOT AREA: 3,870 S.F.

## BLDG. SETBACKS

FRONT LIVABLE:	12 FT.
FRONT PORCH:	7 FT.
FRONT GARAGE:	20 FT.
SIDES:	3 FT. /5 FT.
REAR:	15 FT.

LOT COVERAGE ALLOWED

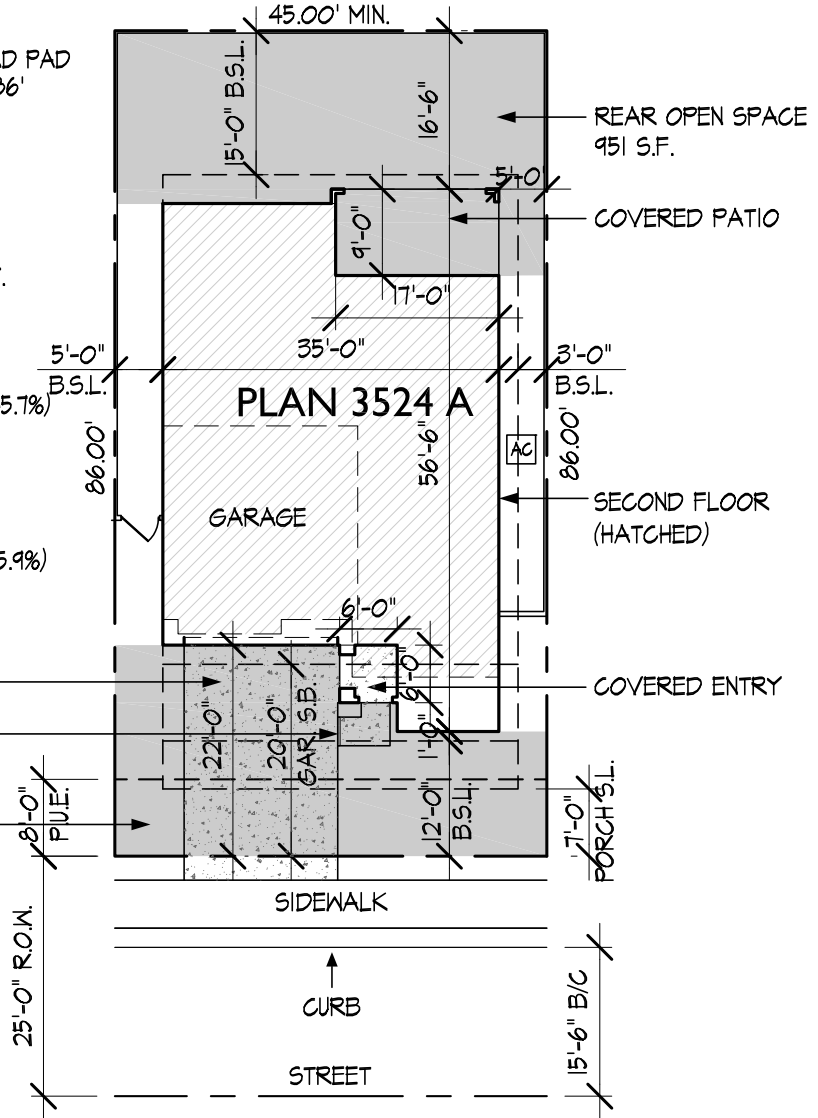
LOT COVERAGE: 80% MAX.  
3524A LOT COVERAGE: 1767 S.F. (45.7%)

OPEN SPACE

OPEN SPACE REQ.: 400 S.F.  
 REAR OPEN SPACE PROVIDED: 451 S.F.  
 TOTAL FRONT YARD: 814 S.F.  
 DRIVEWAY/WALKWAY: 374 S.F. (45.9%)  
 TOTAL OPEN SPACE PROVIDED  
 (NOT INCLUDING DRIVEWAY/WALK): 1,391 S.F.  
 DRIVEWAY/WALKWAY  
 374 S.F. (45.9% OF YARD) \_\_\_\_\_

## DECO DRAIN

FRONT YARD AREA  
814 S.F. \_\_\_\_\_



### 3524 MAX FOOTPRINT - A

LIVABLE - TOTAL:	2,549 S.F.
LIVABLE - 1ST FL.:	1,114 S.F.
2-CAR GARAGE:	463 S.F.
COVERED PATIO:	154 S.F.
COVERED ENTRY:	36 S.F.
2ND FL. PROJECT:	<u>29 S.F.</u>
TOTAL FOOTPRINT:	1,767 S.F.

POCHED AREA DENOTES OPEN SPACE

# HAWES CROSSING CASITA HOMES - VILLAGE 5

# LENNAR®

1665 W. Alameda Drive, Suite 130, Tempe, AZ 85282

MESA, AZ

SCALE: 1"=20'-0"

DATE: 1.13.25

PLAN 3524 A

# TYPICAL PLOT PLAN

## LOT INFORMATION

ZONING: RSL 2.5 PAD PAD  
 TYP. LOT SIZE: 45' MIN. x 86'  
 TYP. LOT AREA: 3870 S.F.

## BLDG. SETBACKS

FRONT LIVABLE: 12 FT.  
 FRONT PORCH: 7 FT.  
 FRONT GARAGE: 20 FT.  
 SIDES: 3 FT. / 5 FT.  
 REAR: 15 FT.

## LOT COVERAGE ALLOWED

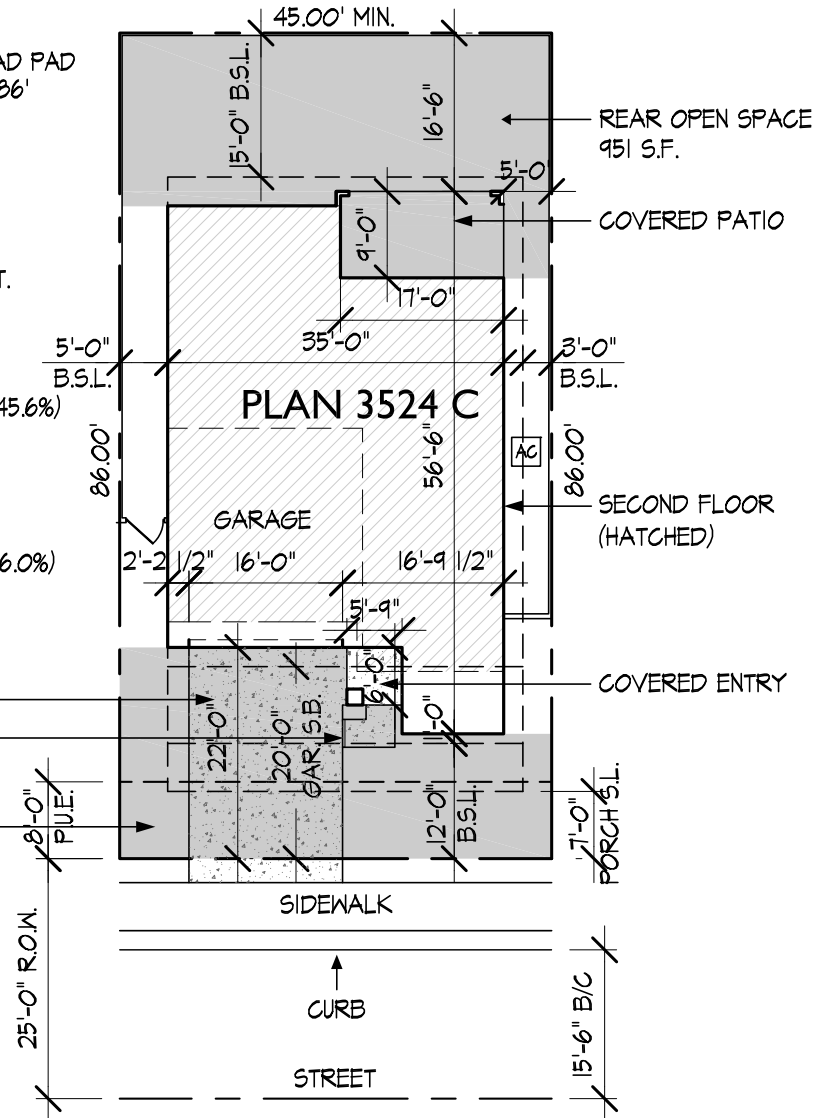
LOT COVERAGE: 80% MAX.  
 3524C LOT COVERAGE: 1766 S.F. (45.6%)

## OPEN SPACE

OPEN SPACE REQ.: 400 S.F.  
 REAR OPEN SPACE PROVIDED: 951 S.F.  
 TOTAL FRONT YARD: 815 S.F.  
 DRIVEWAY/WALKWAY: 375 S.F. (46.0%)  
 TOTAL OPEN SPACE PROVIDED  
 (NOT INCLUDING DRIVEWAY/WALK): 1,391 S.F.

DRIVEWAY/WALKWAY  
 375 S.F. (46.0% OF YARD)  
 DECO DRAIN

FRONT YARD AREA  
 815 S.F.



## 3524 MAX FOOTPRINT - C

LIVABLE - TOTAL: 2549 S.F.  
 LIVABLE - 1ST FL.: 1114 S.F.  
 2-CAR GARAGE: 463 S.F.  
 COVERED PATIO: 154 S.F.  
 COVERED ENTRY: 35 S.F.  
 TOTAL FOOTPRINT: 1,766 S.F.

## HAWES CROSSING CASITA HOMES - VILLAGE 5

**LENNAR**

1665 W. Alameda Drive, Suite 130, Tempe, AZ 85282

MESA, AZ

SCALE: 1"=20'-0"

DATE: 1.13.25

PLAN 3524 C



## TYPICAL PLOT PLAN

## LOT INFORMATION

ZONING: RSL 2.5 PAD PAD  
TYP. LOT SIZE: 45' MIN. x 86'  
TYP. LOT AREA: 3870 S.F.

## BLDG. SETBACKS

FRONT LIVABLE: 12 FT.  
FRONT PORCH: 7 FT.  
FRONT GARAGE: 20 FT.  
SIDES: 3 FT. /5 FT.  
REAR: 15 FT.

LOT COVERAGE ALLOWED

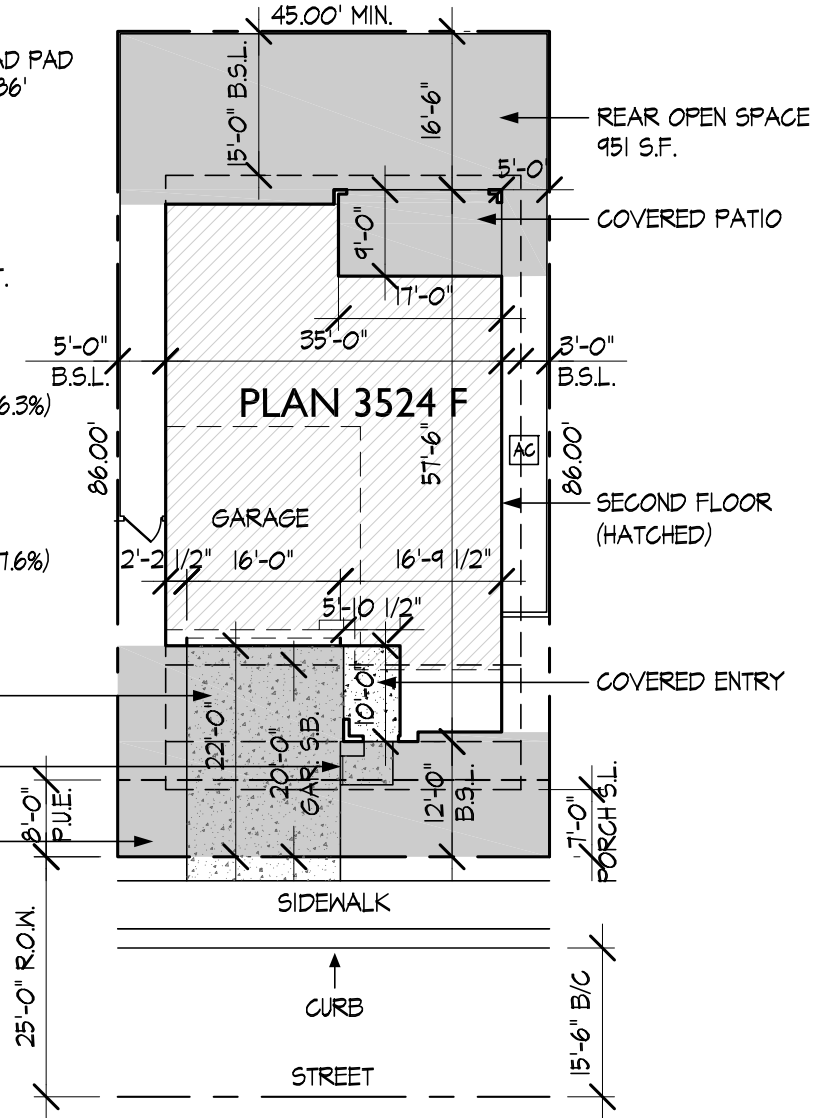
LOT COVERAGE: 80% MAX.  
3524A LOT COVERAGE: 1791 S.F. (46.3%)

## OPEN SPACE

OPEN SPACE REQ.:	400 S.F.
REAR OPEN SPACE PROVIDED:	451 S.F.
TOTAL FRONT YARD:	789 S.F.
DRIVEWAY/WALKWAY:	376 S.F. (47.6%)
TOTAL OPEN SPACE PROVIDED (NOT INCLUDING DRIVEWAY/WALK):	1,364 S.F.

DRIVEWAY/WALKWAY  
376 S.F. (47.6% OF YARD)

DECO DRAIN \_\_\_\_\_  
FRONT YARD AREA  
789 S.F. \_\_\_\_\_



### 3524 MAX FOOTPRINT - F

LIVABLE - TOTAL:	2,549 S.F.
LIVABLE - 1ST FL.:	1,114 S.F.
2-CAR GARAGE:	463 S.F.
COVERED PATIO:	154 S.F.
COVERED ENTRY:	60 S.F.
2ND FL. PROJECT:	<u>16 S.F.</u>
TOTAL FOOTPRINT:	1,791 S.F.

POCHED AREA DENOTES OPEN SPACE

# HAWES CROSSING CASITA HOMES - VILLAGE 5

**LENNAR®**

1665 W. Alameda Drive, Suite 130, Tempe, AZ 85282

MESA, AZ

SCALE: 1"=20'-0"

DATE: 1.13.25

PLAN 3524 F

# TYPICAL PLOT PLAN

## LOT INFORMATION

ZONING: RSL 2.5 PAD PAD  
 TYP. LOT SIZE: 45' MIN. x 86'  
 TYP. LOT AREA: 3,870 S.F.

## BLDG. SETBACKS

FRONT LIVABLE: 12 FT.  
 FRONT PORCH: 7 FT.  
 FRONT GARAGE: 20 FT.  
 SIDES: 3 FT. / 5 FT.  
 REAR: 15 FT.

## LOT COVERAGE ALLOWED

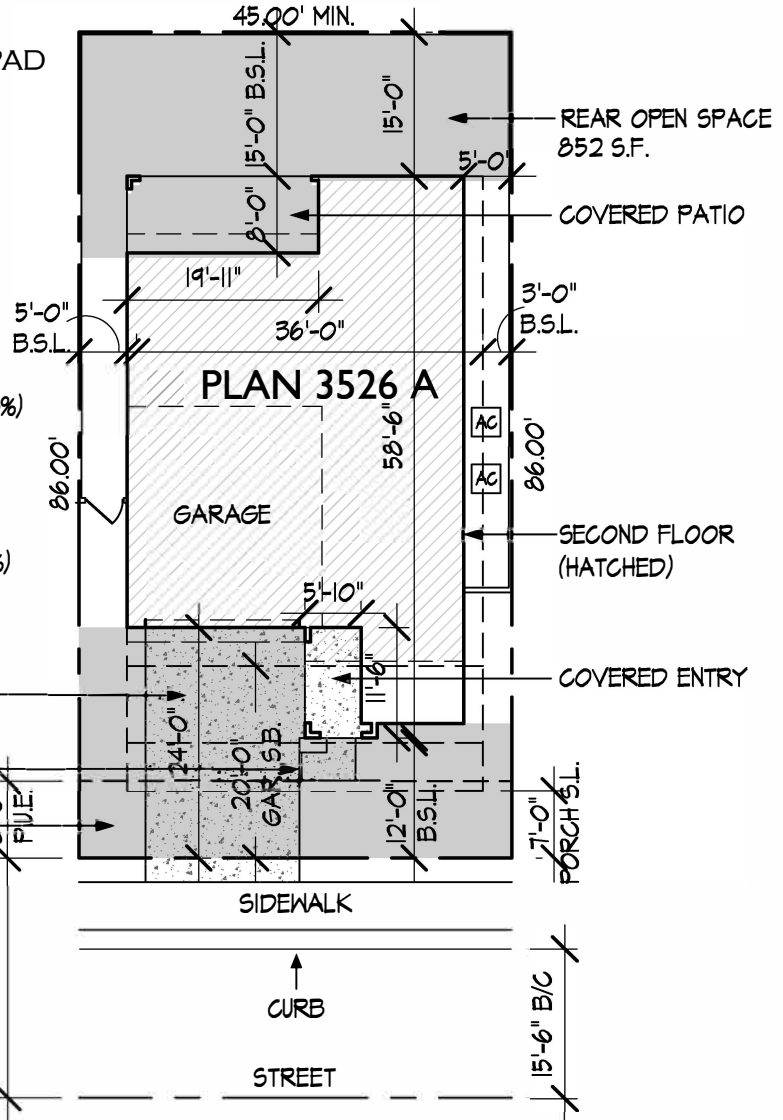
LOT COVERAGE: 80% MAX.  
 3526A LOT COVERAGE: 1,849 S.F. (47.8%)

## OPEN SPACE

OPEN SPACE REQ.: 400 S.F.  
 REAR OPEN SPACE PROVIDED: 852 S.F.  
 TOTAL FRONT YARD: 796 S.F.  
 DRIVEWAY/WALKWAY: 413 S.F. (48.4%)  
 TOTAL OPEN SPACE PROVIDED  
 (NOT INCLUDING DRIVEWAY/WALK): 1,235 S.F.

DRIVEWAY/WALKWAY  
 413 S.F. (48.4% OF YARD)

DECO DRAIN  
 FRONT YARD AREA  
 854 S.F.



## 3526 MAX FOOTPRINT - A

LIVABLE - TOTAL: 2,679 S.F.  
 LIVABLE - 1ST FL.: 1,126 S.F.  
 2-CAR GARAGE: 467 S.F.  
 COVERED PATIO: 159 S.F.  
 COVERED ENTRY: 69 S.F.  
 2ND FL. CANTILEVER: 28 S.F.  
 TOTAL FOOTPRINT: 1,849 S.F.

## HAWES CROSSING CASITA HOMES - VILLAGE 5

**LENNAR**

1665 W. Alameda Drive, Suite 130, Tempe, AZ 85282

MESA, AZ

SCALE: 1"=20'-0"

DATE: 1.13.25

PLAN 3526 A



# TYPICAL PLOT PLAN

## LOT INFORMATION

ZONING: RSL 2.5 PAD PAD  
 TYP. LOT SIZE: 45' MIN. x 86'  
 TYP. LOT AREA: 3,870 S.F.

## BLDG. SETBACKS

FRONT LIVABLE: 12 FT.  
 FRONT PORCH: 7 FT.  
 FRONT GARAGE: 20 FT.  
 SIDES: 3 FT. / 5 FT.  
 REAR: 15 FT.

## LOT COVERAGE ALLOWED

LOT COVERAGE: 80% MAX.  
 3526C LOT COVERAGE: 1,838 S.F. (47.5%)

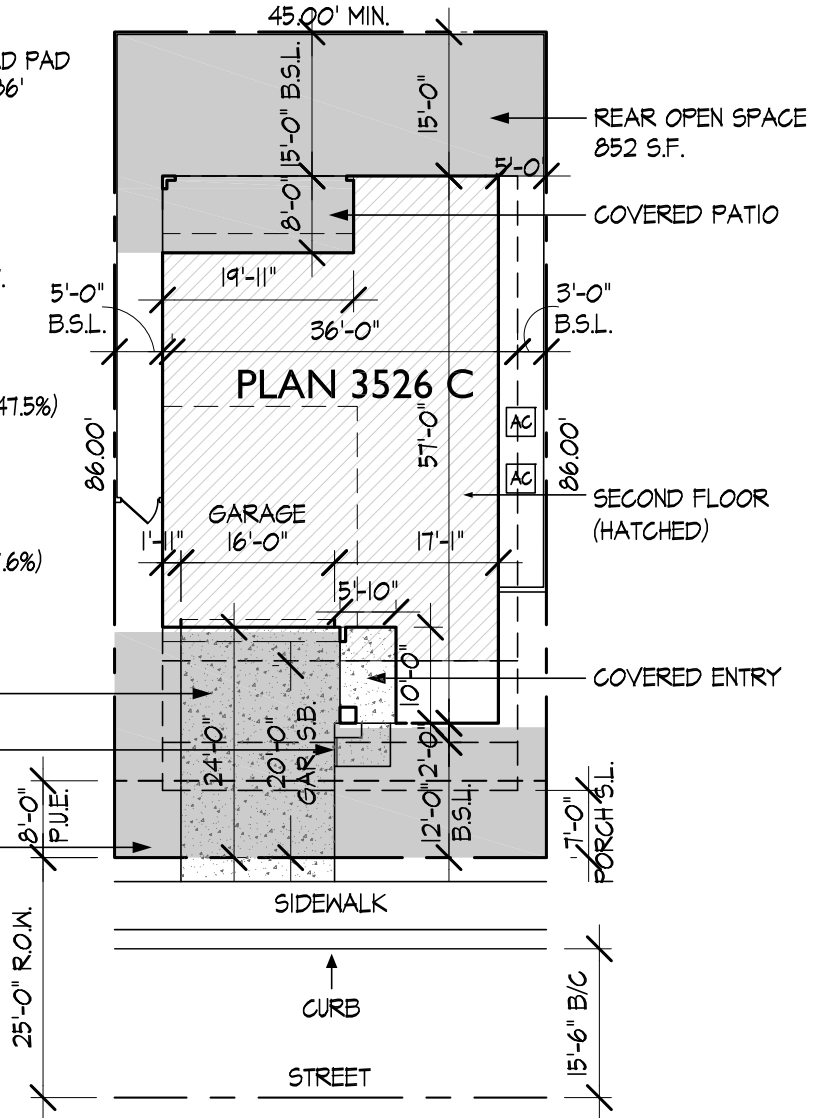
## OPEN SPACE

OPEN SPACE REQ.: 400 S.F.  
 REAR OPEN SPACE PROVIDED: 852 S.F.  
 TOTAL FRONT YARD: 865 S.F.  
 DRIVEWAY/WALKWAY: 412 S.F. (47.6%)  
 TOTAL OPEN SPACE PROVIDED  
 (NOT INCLUDING DRIVEWAY/WALK): 1,305 S.F.

DRIVEWAY/WALKWAY  
 412 S.F. (47.6% OF YARD)

DECO DRAIN

FRONT YARD AREA  
 865 S.F.



## 3526 MAX FOOTPRINT - C

LIVABLE - TOTAL: 2,679 S.F.  
 LIVABLE - 1ST FL.: 1,126 S.F.  
 2-CAR GARAGE: 467 S.F.  
 COVERED PATIO: 159 S.F.  
 COVERED ENTRY: 58 S.F.  
 2ND FL. CANTILEVER: 28 S.F.  
 TOTAL FOOTPRINT: 1,838 S.F.

## HAWES CROSSING CASITA HOMES - VILLAGE 5

**LENNAR**

1665 W. Alameda Drive, Suite 130, Tempe, AZ 85282

MESA, AZ

SCALE: 1"=20'-0"

DATE: 1.13.25

PLAN 3526 C

## TYPICAL PLOT PLAN

## LOT INFORMATION

ZONING: RSL 2.5 PAD PAD  
TYP. LOT SIZE: 45' MIN. x 86'  
TYP. LOT AREA: 3870 S.F.

## BLDG. SETBACKS

FRONT LIVABLE: 12 FT.  
FRONT PORCH: 7 FT.  
FRONT GARAGE: 20 FT.  
SIDES: 3 FT. /5 FT.  
REAR: 15 FT.

LOT COVERAGE ALLOWED

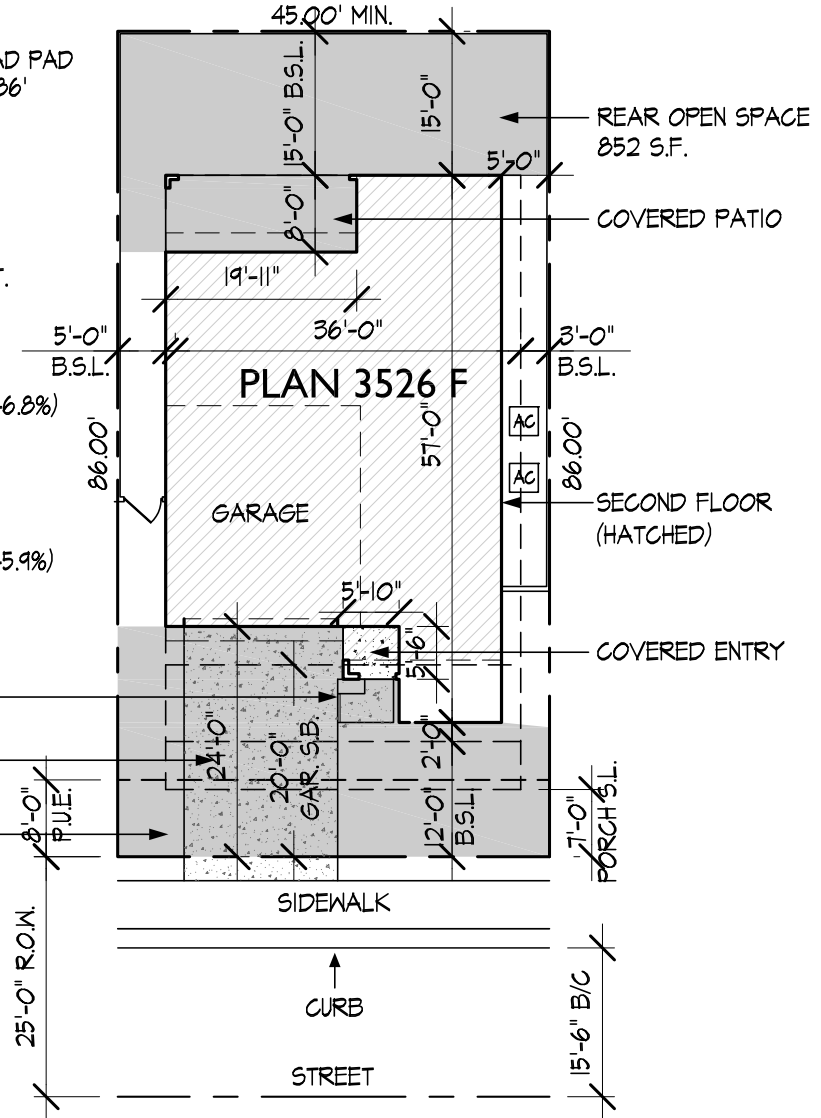
LOT COVERAGE: 80% MAX.  
3526F LOT COVERAGE: 1812 S.F. (46.8%)

## OPEN SPACE

OPEN SPACE REQ.:	400 S.F.
REAR OPEN SPACE PROVIDED:	852 S.F.
TOTAL FRONT YARD:	891 S.F.
DRIVEWAY/WALKWAY:	409 S.F. (45.9%)
TOTAL OPEN SPACE PROVIDED (NOT INCLUDING DRIVEWAY/WALK):	1,334 S.F.

DECO DRAIN \_\_\_\_\_  
DRIVEWAY/WALKWAY  
409 S.F. (45.9% OF YARD)

FRONT YARD AREA  
891 S.F. \_\_\_\_\_



3526 MAX FOOTPRINT - F

LIVABLE - TOTAL:	2679 S.F.
LIVABLE - 1ST FL.:	1,126 S.F.
2-CAR GARAGE:	467 S.F.
COVERED PATIO:	159 S.F.
COVERED ENTRY:	32 S.F.
2ND FL. CANTILEVER:	<u>28 S.F.</u>
TOTAL FOOTPRINT:	1,812 S.F.

POCHED AREA DENOTES OPEN SPACE

# HAWES CROSSING CASITA HOMES - VILLAGE 5

**LENNAR®**

1665 W. Alameda Drive, Suite 130, Tempe, AZ 85282

MESA, AZ

SCALE: 1"=20'-0"

DATE: 1.13.25

PLAN 3526 F