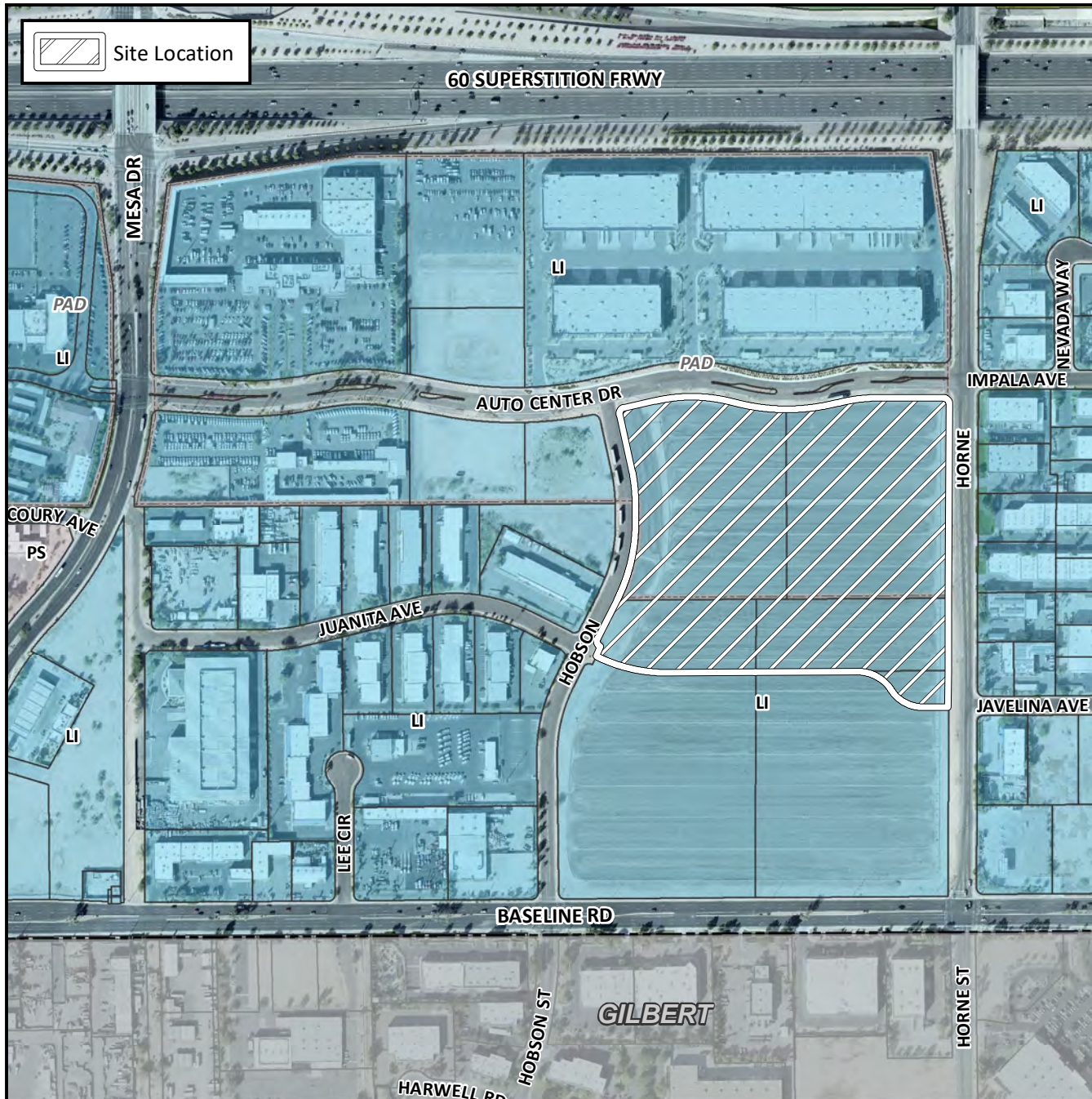


## Final Plat Vicinity Map



## Case Details

### Project:

Metro Mesa Phase II

### Language:

District 3. The 1700 to 1900 blocks of South Horne (west side), the 1700 to 1900 blocks of South Hobson (east side), and the 600 to 800 blocks of East Auto Center Drive (south side). Located north of Baseline Road and east of Mesa Drive. 1 LI PAD Industrial lot (22± acres). Metro East Valley Phase II, LLC, Developer. Geoffrey K. Brimhall, PRE-CEG, Surveyor

