

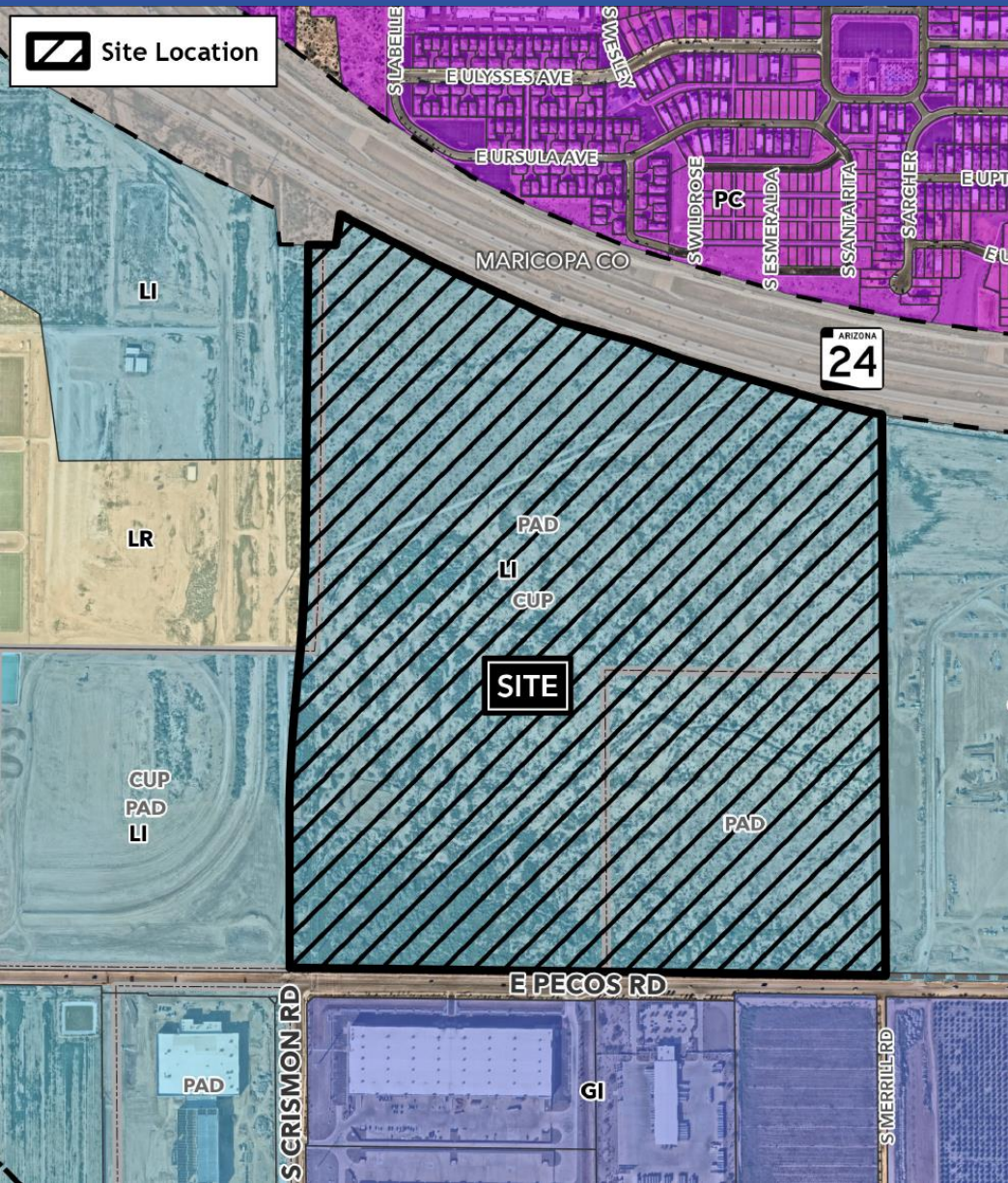
City of Mesa

Planning and Zoning Board

ZON25-00626

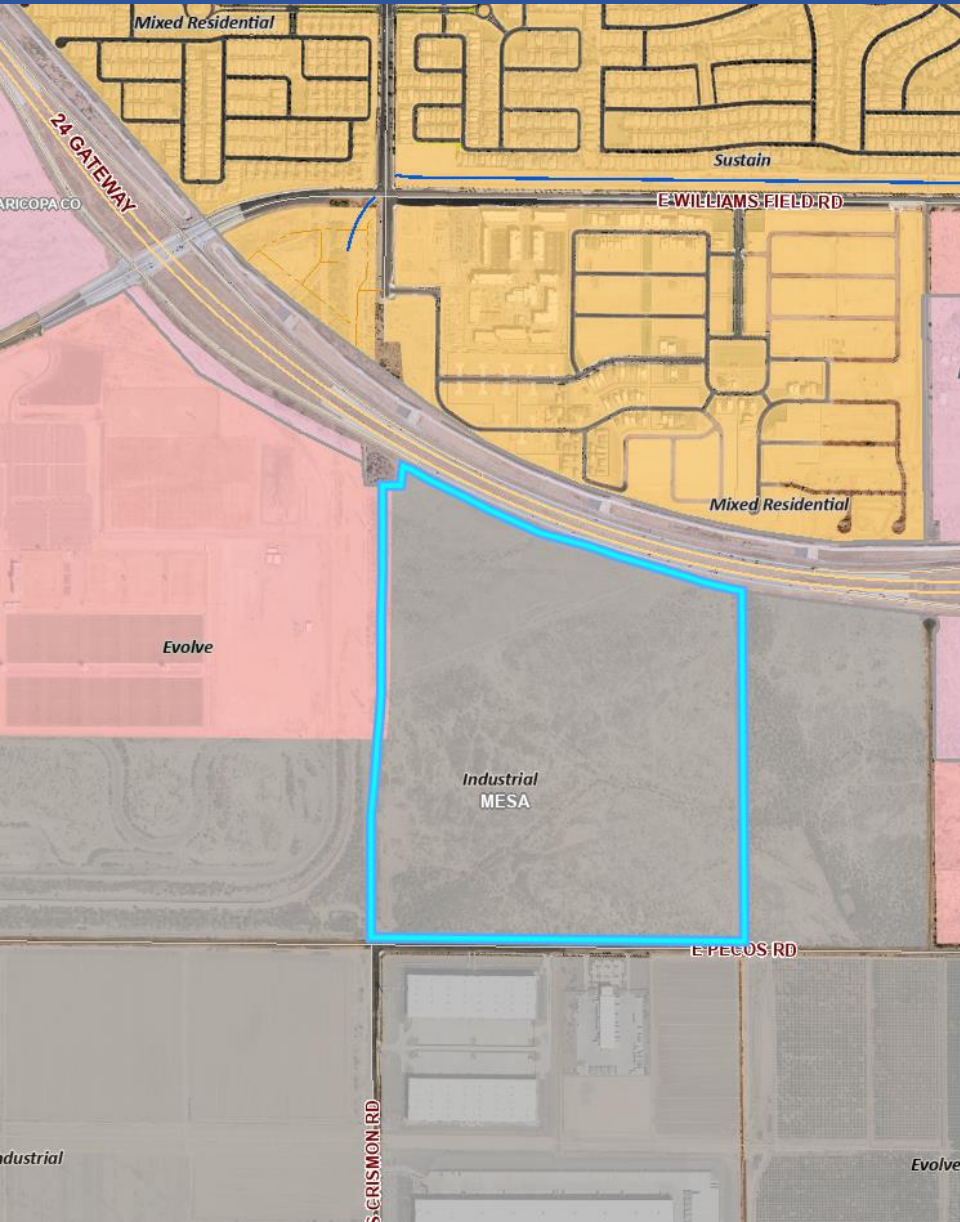
NTT PH10

Josh Grandlienard, AICP



## Location

- 10126 E. Pecos
- 170± parcel
- North side of Pecos Road
- East side of Crismon Road Alignment



# General Plan

- Industrial Placetype
- Evolve Strategy
- Warehousing and Storage is a Principal Use



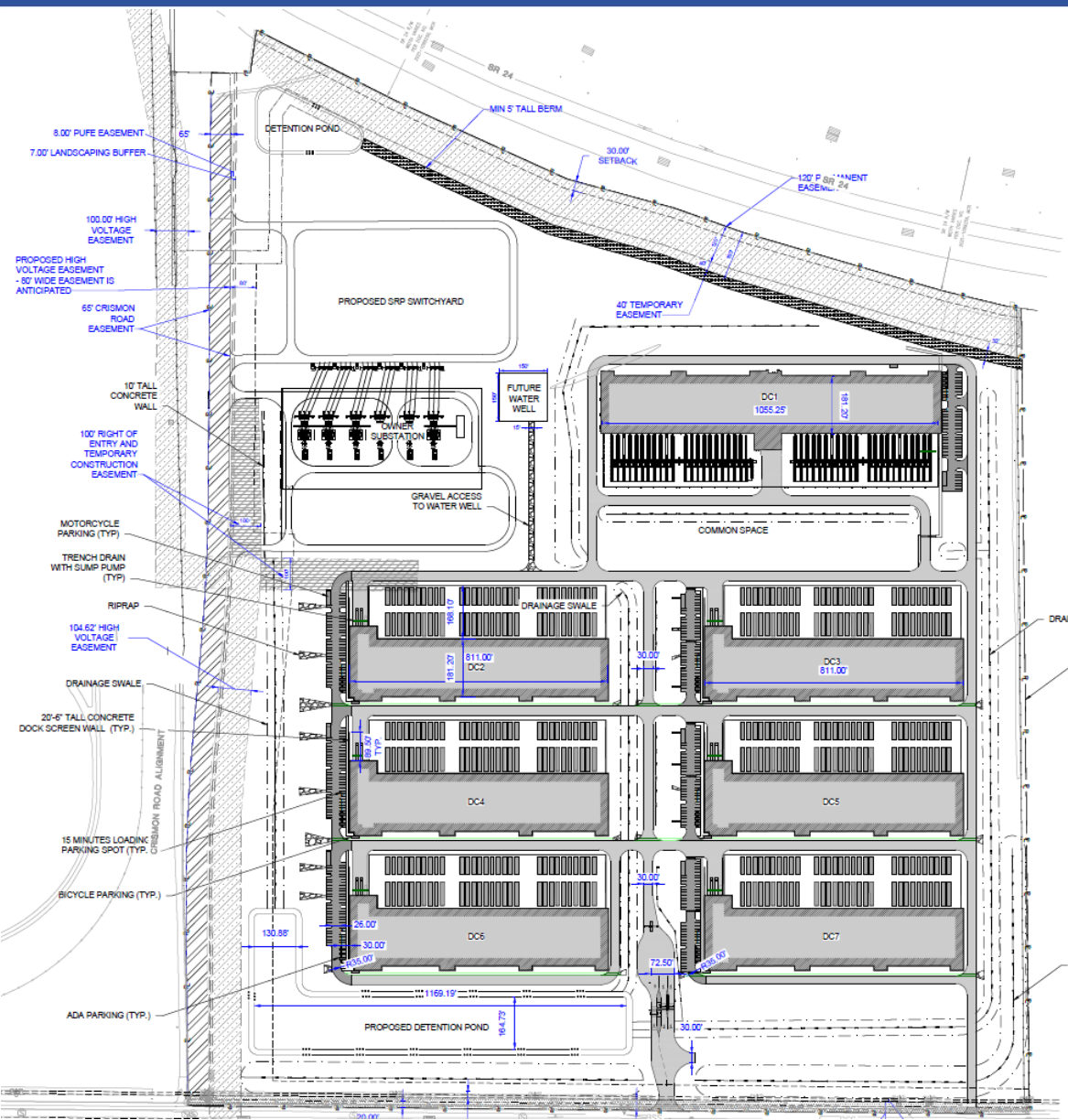
# Site Photos



Looking northwest towards the site



Looking northeast towards the site



## Site Plan

- 7 Data Center buildings
- 2,257,581 total sq. ft.
- Generators located internally
- 2 access points onto Pecos Road Rd. and 4 from future Crismon Road Alignment

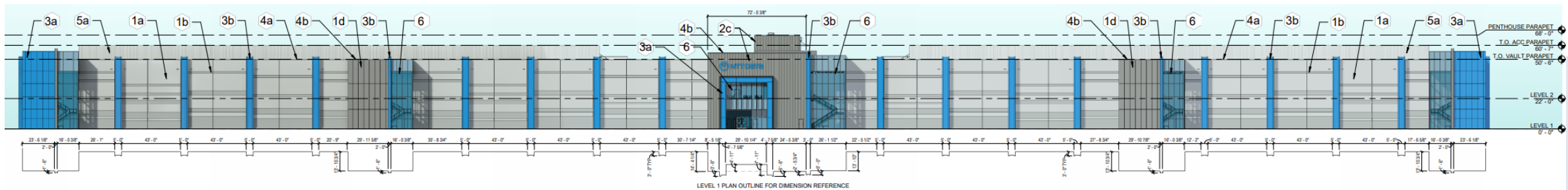
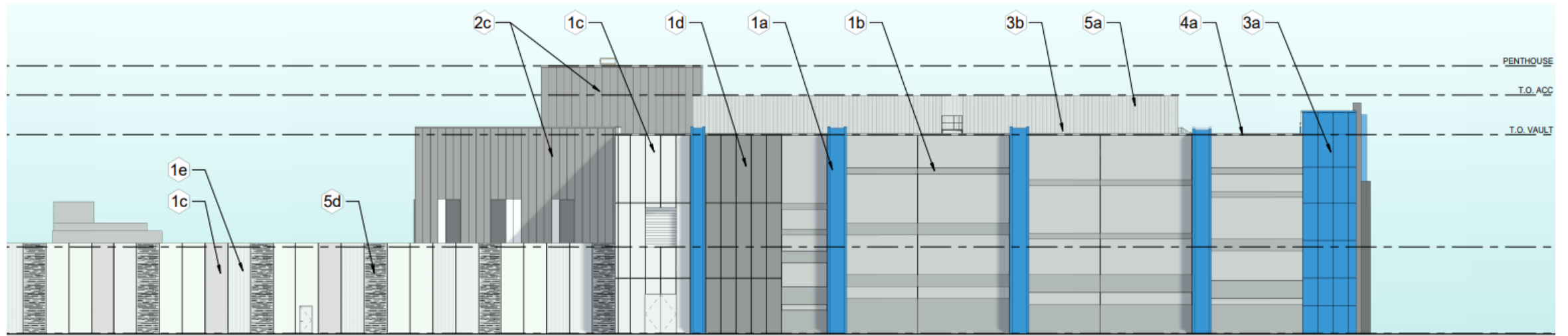


## Landscape Plan

- Trees: Blue Cypresses, Palo Blanco, Texas Redbud, Mulga, Willow Acacia, Etc.
- Shrubs: Brittlebush, Creosote Buse, Green Cloud Texas Sage, Jojoba, Tuscan Blue Rosemary, Etc.

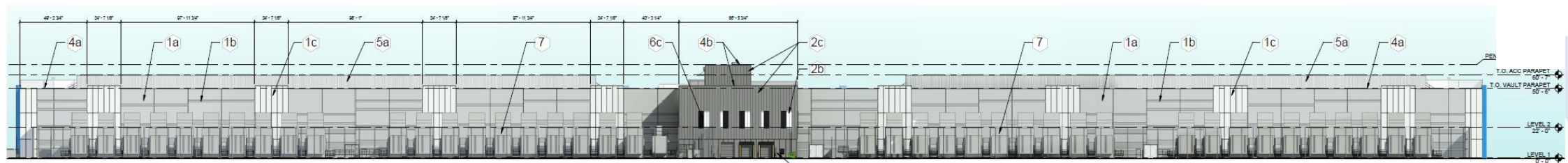
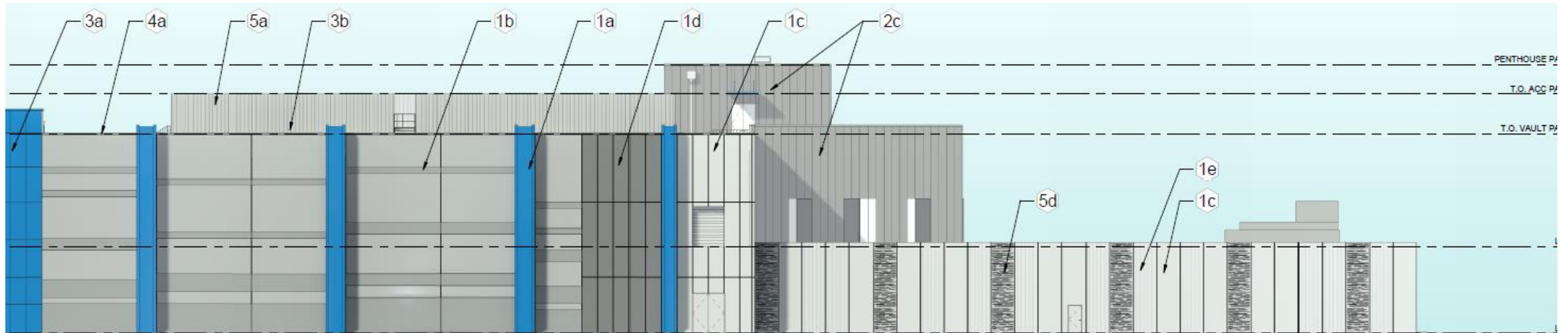


# Elevations – Building 1



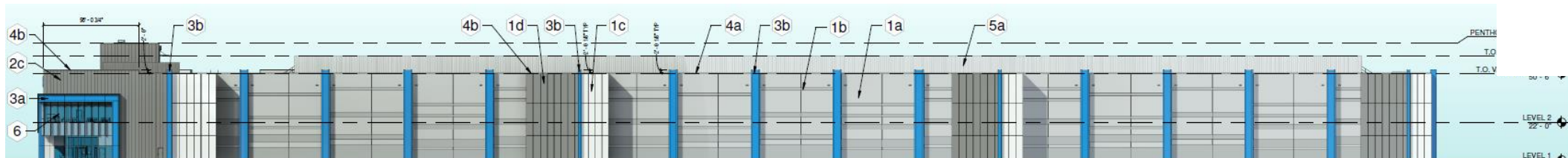
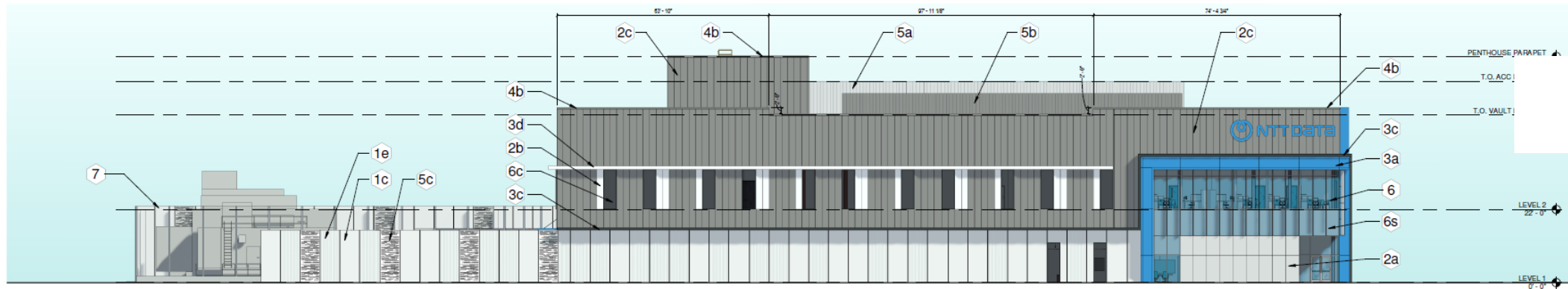


# Elevations – Building 1



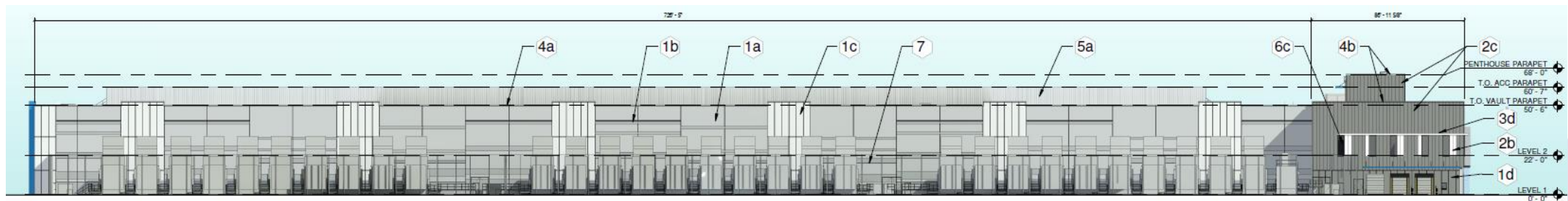
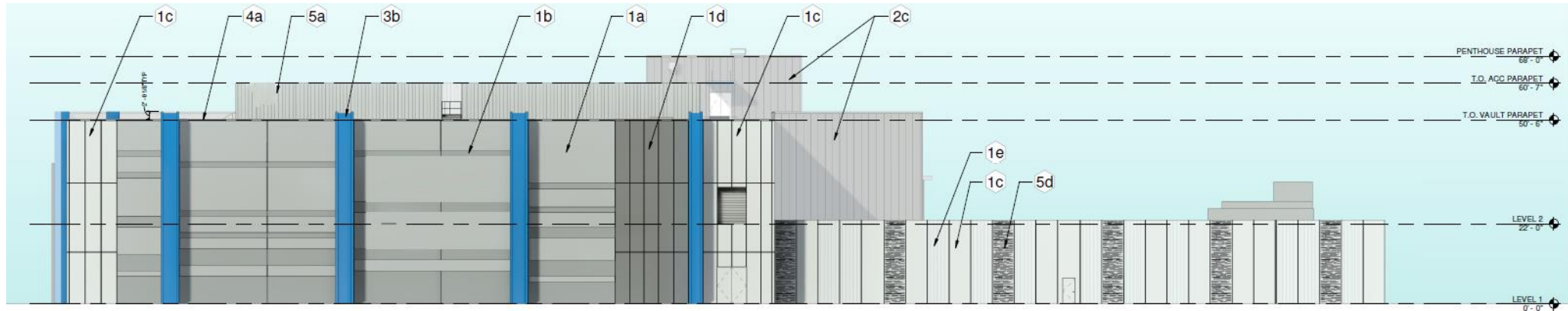


# Elevations – Buildings 2-7





# Elevations – Buildings 2-7





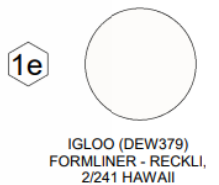
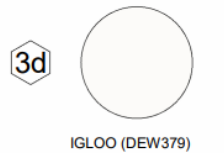
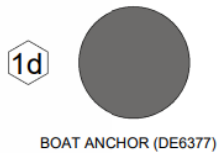
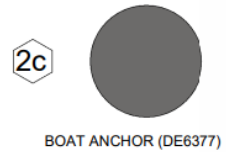
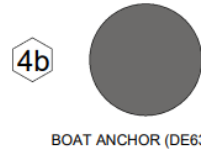
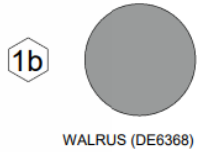
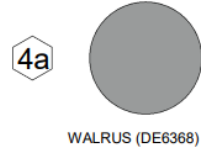
**EXTERIOR ELEVATIONS - MATERIAL LEGEND**

PAINTED TILT-UP CONCRETE

INSULATED METAL WALL PANELS

METAL COMPOSITE MATERIAL PANEL

METAL COPING



# Materials & Colors

- Color Integrated Tilt-up Panels with formliners
- Metal Composite
- Formed Metal Panels



# Renderings



Looking southeast from SR 24



# Renderings



Looking southwest from SR 24



# Recommendation

Approval with conditions

City of Mesa

Planning and Zoning Board