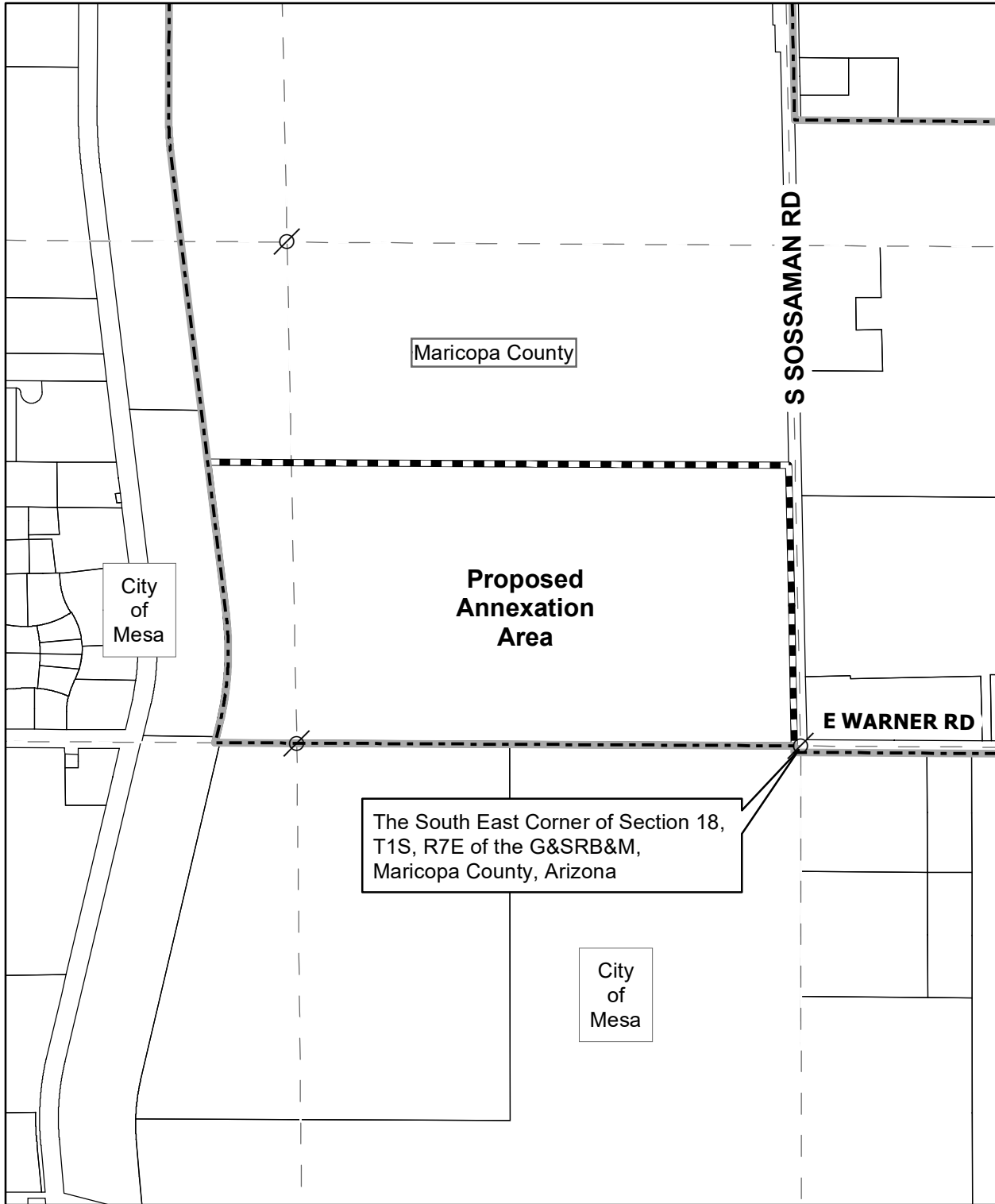


# ANX21-00799

## 101± Acres



-  Legal Control Point
-  City of Mesa Boundary
-  Proposed Annexation Boundary
-  Quarter Section

# EXHIBIT 'A'



**Legal Description  
Warner & Sossaman Industrial  
Annexation**

Job No. 21-0710

September 24, 2021

A portion of the South Half of Section 18, Township 1 South, Range 7 East, of the Gila and Salt River Meridian, Maricopa County, Arizona, and more particularly described as follows:

**COMMENCING** at a 3-inch MCDOT brass cap in a hand hole at the southeast corner of said Section 18, from which a 2-inch aluminum cap at the south quarter corner of said Section 18, bears North 89 degrees 41 minutes 04 seconds West (an assumed bearing) 2,644.07 feet;

thence along the south line of the Southeast Quarter of said Section 18, North 89 degrees 41 minutes 04 seconds West, 33.01 feet to the **POINT OF BEGINNING**;

thence continuing along said south line, North 89 degrees 41 minutes 04 seconds West, 2,611.06 feet to the south quarter corner of said Section 18;

thence along the south line of the Southwest Quarter of said Section 18, North 89 degrees 40 minutes 37 seconds West, 435.93 feet;

thence North 13 degrees 18 minutes 54 seconds East, 172.19 feet to the beginning of a curve, concave westerly, having a radius of 1,366.73 feet;

thence northerly 481.63 feet along the arc of said curve to the left through a central angle of 20 degrees 11 minutes 27 seconds;

thence North 6 degrees 52 minutes 33 seconds West, 831.24 feet to a point on the north line of the south 1,471 feet of said Southwest Quarter;

thence along said north line, South 89 degrees 40 minutes 37 seconds East, 440.05 feet;

thence along the north line of the south 1,471 feet of said Southeast Quarter, South 89 degrees 41 minutes 04 seconds East, 2,610.74 feet to a point on the west line of the east 33.00 feet of said Southeast Quarter;

thence along said west line, South 1 degrees 08 minutes 06 seconds East, 1,471.47 feet to the **POINT OF BEGINNING**.

Containing an area of 4,411,308 square feet or 101.2697 acres, more or less.



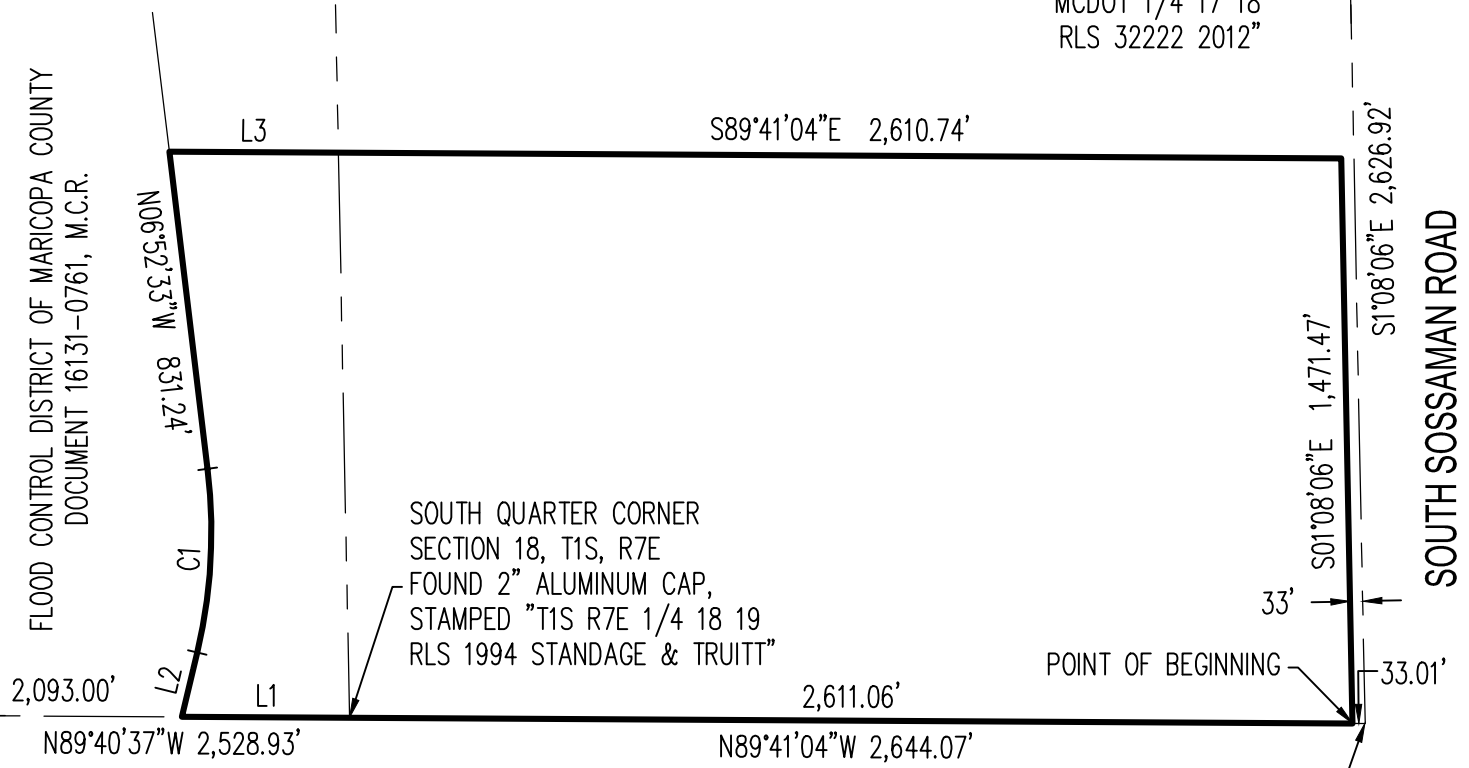
### LINE TABLE

LINE	BEARING	LENGTH
L1	N89°40'37"W	435.93'
L2	N13°18'54"E	172.19'
L3	S89°40'37"E	440.05'

EAST QUARTER CORNER  
SECTION 18, T1S, R7E  
FOUND 3" BRASS CAP  
IN HAND HOLE, STAMPED  
"MCDOT 1/4 17 18  
RLS 32222 2012"

FLOOD CONTROL DISTRICT OF MARICOPA COUNTY  
DOCUMENT 16131-0761, M.C.R.

SOUTHWEST CORNER  
SECTION 18, T1S, R7E  
FOUND 3" BRASS CAP  
IN HAND HOLE,  
STAMPED "MCDH"



SOUTH QUARTER CORNER  
SECTION 18, T1S, R7E  
FOUND 2" ALUMINUM CAP,  
STAMPED "T1S R7E 1/4 18 19  
RLS 1994 STANDAGE & TRUITT"

POINT OF COMMENCEMENT  
SOUTHEAST CORNER  
SECTION 18, T1S, R7E  
FOUND 3" BRASS CAP  
IN HAND HOLE, STAMPED  
"MCDOT T1S R7E  
17 18 19 20 2010"

### CURVE TABLE

CURVE	LENGTH	RADIUS	DELTA	CHORD	CHORD BRG
C1	481.63'	1366.73'	20°11'27"	479.14'	N03°13'11"E



N.T.S.

21-0710	Warner & Sossaman Industrial Annexation
	EXHIBIT

1130 N. Alma School Rd.  
Ste. 120 Mesa, AZ 85201  
T:480.503.2250 | F:480.503.2258  
www.epsgroupinc.com