

RESOLUTION NO. _____

**A RESOLUTION OF THE CITY COUNCIL OF THE CITY OF MESA,
MARICOPA COUNTY, ARIZONA, EXTINGUISHING A PUBLIC
UTILITIES AND FACILITIES EASEMENT, LOCATED AT 5149
SOUTH INSPIRIAN PARKWAY**

WHEREAS, pursuant to Arizona Revised Statutes Title 28 §§ 7201-7215 and/or Mesa City Code Title 9, Chapter 10, the City Council has the authority to abandon, vacate or extinguish (collectively, hereafter, “abandon”) unnecessary roadway, right-of-way, or easements to which the City holds right or title to.

WHEREAS, the City Council has determined that the public utilities and facilities easement dedicated on the Map of Dedication Eastmark – Phase 1, in Book 1117 of Maps, Page 47, records of Maricopa County, Arizona, located at 5149 South Inspirian Parkway as hereinafter described (“Public Utilities and Facilities Easement”), is no longer needed.

WHEREAS Mesa City Code 9-10-2 permits the City Council to extinguish easements no longer needed by the City upon application and payment of the application fee.

NOW THEREFORE, BE IT RESOLVED BY THE CITY COUNCIL OF THE CITY OF MESA, MARICOPA COUNTY, ARIZONA, AS FOLLOWS:

Section 1: All rights of the City of Mesa in and to the Exhibit A Public Utilities and Facilities Easement are abandoned and deemed extinguished:

PLEASE REFER TO THE LEGAL DESCRIPTION **ON EXHIBIT A** AND DEPICTION ON **EXHIBIT B** ATTACHED HERETO AND MADE A PART HEREOF FOR THE ABANDONED AREA

PASSED AND ADOPTED by the City Council of the City of Mesa, Maricopa County, Arizona, this 15th day of March, 2021.

APPROVED:

Mayor

ATTEST:

City Clerk

LEGAL DESCRIPTION - EXHIBIT A

ALL THAT PORTION OF THE PUBLIC UTILITIES AND FACILITIES EASEMENT AS SHOWN ON THE MAP OF DEDICATION FOR EASTMARK – PHASE 1, RECORDED IN BOOK 1117, PAGE 47, MARICOPA COUNTY RECORDS, BEING A PORTION OF THE SOUTHWEST QUARTER OF SECTION 23, TOWNSHIP 1 SOUTH, RANGE 7 EAST, GILA AND SALT RIVER MERIDIAN, MARICOPA COUNTY, ARIZONA, MORE PARTICULARLY DESCRIBED AS FOLLOWS:

COMMENCING AT THE SOUTHWEST CORNER OF SAID SECTION 23 FROM WHICH THE SOUTH QUARTER CORNER BEARS SOUTH 89°38'44" EAST A DISTANCE OF 2664.75 FEET;

THENCE SOUTH 89°38'44" EAST, ALONG THE SOUTH LINE OF SAID SOUTHWEST QUARTER, A DISTANCE OF 292.20 FEET TO THE SOUTHERN PROLONGATION OF THE CENTERLINE OF S. INSPIRIAN PARKWAY ACCORDING TO SAID MAP OF DEDICATION;

THENCE NORTH 00°21'16" EAST, ALONG THE CENTERLINE OF S. INSPIRIAN PARKWAY AS SHOWN ON SAID MAP OF DEDICATION, A DISTANCE OF 476.33 FEET;

THENCE SOUTH 89°17'27" EAST A DISTANCE OF 40.50 FEET TO A POINT ON THE EAST RIGHT OF WAY LINE OF S. INSPIRIAN PARKWAY;

THENCE CONTINUING SOUTH 89°17'27" EAST A DISTANCE OF 14.00 FEET TO THE POINT OF BEGINNING;

THENCE NORTH 00°21'16" EAST 58.50 FEET;

THENCE SOUTH 89°17'27" EAST 22.32 FEET;

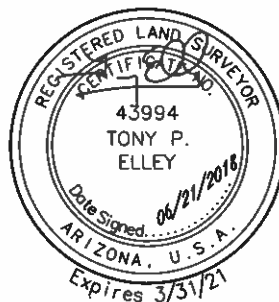
THENCE SOUTH 00°42'33" WEST 58.50 FEET;

THENCE NORTH 89°17'27" WEST 21.96 FEET TO THE POINT OF BEGINNING.

CONTAINS 1295 SQUARE FEET OR 0.030 ACRES, MORE OR LESS.

THE BASIS OF BEARING FOR THE ABOVE DESCRIPTION IS SOUTH 89°38'44" EAST ALONG THE SOUTH LINE OF THE SOUTHWEST QUARTER OF SECTION 23, TOWNSHIP 1 SOUTH, RANGE 7 EAST, GILA AND SALT RIVER MERIDIAN, MARICOPA COUNTY, ARIZONA.

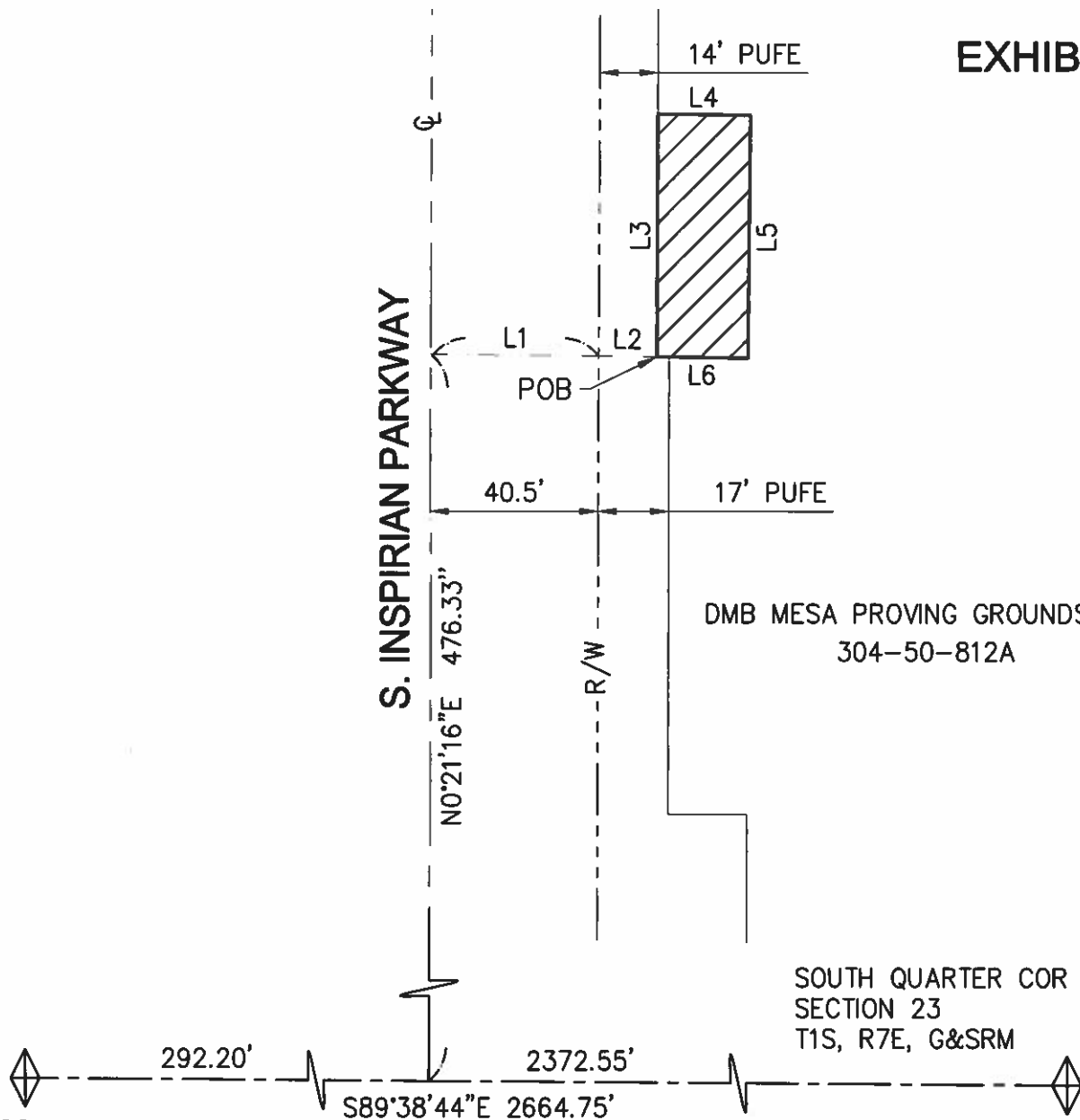
SEE ATTACHED "EXHIBIT B" BY REFERENCE MADE A PART HERETO.



2152 SOUTH VINEYARD, SUITE 123
MESA, ARIZONA 85210
TEL 480.768.8600 · FAX 480.768.8609
www.sunrise-eng.com

EXHIBIT B

S. INSPIRIAN PARKWAY

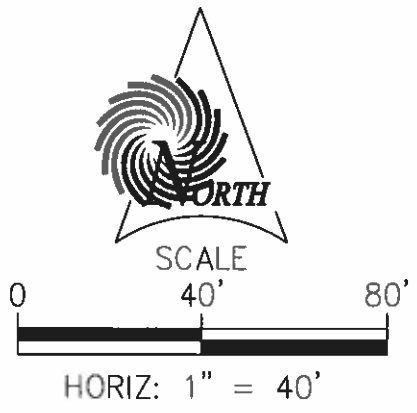


DMB MESA PROVING GROUNDS LLC
304-50-812A

SOUTH QUARTER COR
SECTION 23
T1S, R7E, G&SRM

POC
SOUTHWEST COR
SECTION 23
T1S, R7E, G&SRM

LINE TABLE		
NO.	BEARING	LENGTH
L1	S89°17'27"E	40.50
L2	S89°17'27"E	14.00
L3	N0°21'16"E	58.50
L4	S89°17'27"E	22.32
L5	S0°42'33"W	58.50
L6	N89°17'27"W	21.96



**SUNRISE
ENGINEERING**
2152 SOUTH VINEYARD, SUITE 123
MESA, ARIZONA 85210
TEL 480.768.8600 · FAX 480.768.8609
www.sunrise-ene.com

P:\Brookfield Residential\06341 Eastmark General\Survey\dwg\PUFE Extinguish.dwg Jun 20, 2018 6:20pm nhlmsn