

CITY OF MESA FIRE AND MEDICAL STATION 205

PROJECT TEAM

OWNER	ARCHITECT	CIVIL ENGINEER
MESA FIRE AND MEDICAL DEPARTMENT	PERLMAN ARCHITECTS	CIVIL DESIGN SOLUTIONS, LLC
13 W 1ST STREET	2929 N. CENTRAL AVE, STE 1600	10910 W PALM LN,
MESA, AZ 85201	PHOENIX, AZ 85012-2727	AVONDALE, AZ 85392
CONTACT:	CONTACT: JUAN RIVAS	CONTACT: BILL GASQUE
PHONE: (480) 644-2101	PHONE: (602) 837-4703	PHONE: (480) 205-8434
EMAIL: FIREINFO@MESAAZ.GOV	EMAIL: JUANR@PERLMANAZ.COM	EMAIL: BGASQUE@CDSELLC-AZ.NET

LANDSCAPE ARCHITECT
LOGAN SIMPSON, INC.
51 W. THIRD ST. SUITE 450
TEMPE, ARIZONA 85281
CONTACT: WILL HERRERA
PHONE: (480) 967-1343
EMAIL: WHERRERA@LOGANSIMPSON.COM

GENERAL LANDSCAPE NOTES

1.

LANDSCAPE CONTRACTOR SHALL CONFIRM LOCATION OF ALL UNDERGROUND UTILITIES PRIOR TO ANY EXCAVATION AND SHALL BE RESPONSIBLE FOR THE FOLLOWING:
2.

DAMAGES TO SUCH UTILITIES CAUSED AS A RESULT OF THE CONTRACTOR'S ACTIVITIES.
3.

DAMAGES TO EXISTING WALKS, WALLS, DRIVES, CURBS, ETC.
4.

INSPECTING THE SITE IN ORDER TO BE FULLY AWARE OF EXISTING CONDITIONS PRIOR TO SUBMITTING A BID.
5.

INSTALLATION OF ALL LANDSCAPE AND IRRIGATION MATERIALS SHALL COMPLY WITH SECTIONS 424, 425, 757, AND 795 OF THE MAG STANDARD SPECIFICATIONS.
6.

CONTRACTOR SHALL REPAIR ANY DAMAGE MADE TO THE EXISTING SPRINKLER SYSTEM TO THE SATISFACTION OF THE CITY AT NO ADDITIONAL COST TO THE CITY.
7.

LANDSCAPE REMOVAL IS A NON-PAY ITEM UNLESS OTHERWISE NOTED.
8.

ALL EXISTING VEGETATION, WEEDS, DEBRIS, ETC. NOTED TO BE REMOVED ON THE PLANS AND SPECIFICATIONS SHALL BE REMOVED FROM PROJECT AREA AND DISPOSED OF PROPERLY OFF THE SITE AT THE CONTRACTOR'S EXPENSE (SCARIFY EXISTING SUBGRADE, MINIMUM SIX (6) INCHES DEPTH).
9.

DAMAGE TO TURF SHALL BE REPAIRED BY CONTRACTOR, I.E., RUTS FILLED WITH CLEAN SOIL, COMPACTED TO MATCH SURROUNDING GRADES, EXCESS SOIL, ROCK, ETC. SHALL BE REMOVED TO LEAVE THE SITE CLEAN.
10.

ALL PLANT MATERIAL, OTHER THAN TREES, SHALL CONFORM TO GRADING, TYPE, ETC. AS SET FORTH IN THE AMERICAN STANDARD FOR NURSERY STOCK BY THE AMERICAN ASSOCIATION OF NURSERYMEN. ALL TREES SHALL CONFORM TO THE CURRENT ARIZONA NURSERY ASSOCIATION TREE SPECIFICATIONS AND MAG SPEC 795.7. SHOULD ANY CONFLICTS IN THE SPECIFICATIONS OCCUR, THE ARIZONA NURSERY ASSOCIATION'S SPECIFICATIONS SHALL PREVAIL.
11.

CITY RESERVES THE RIGHT TO INSPECT SHRUBS AND CONTAINERED TREES FOR CONDITION OF ROOT BALLS. FOR ANY SUCH INSPECTIONS WHICH MAY DESTROY ROOTBALL, CONTRACTOR SHALL SUPPLY ADDITIONAL PLANT AT NO COST TO CITY.
12.

PLANT PITS SHALL BE INSPECTED BY CITY PRIOR TO PLANTING BY THE CONTRACTOR BY REQUESTING AN INSPECTION 48 HOURS IN ADVANCE.
13.

ROUGH AND FINE GRADING TO ESTABLISH UNIFORM SMOOTH GRADE IS INCLUDED IN THIS PROJECT.
14.

SOIL TEST FOR FERTILITY AND ADDITIVE RECOMMENDATIONS (FOR TURF AND ORNAMENTALS) SHALL BE COMPLETED BY CONTRACTOR TO DETERMINE IF ADDITIVES ARE REQUIRED. CONTRACTOR SHALL PROVIDE COPY OF SOIL TEST RESULTS FOR REVIEW AND APPROVAL TO ENGINEERING INSPECTOR AT LEAST SEVEN (7) DAYS PRIOR TO ANTICIPATED PLANTING. AFTER APPROVAL BY THE CITY, THE CONTRACTOR SHALL PROVIDE AND INCORPORATE ANY ADDITIVES REQUIRED PRIOR TO OR AT TIME OF PLANTING.
15.

PLANT PIT SOIL MIXTURE SHALL CONSIST OF FOUR AND ONE-HALF PARTS NATURAL FERTILE, FRIABLE SOIL AND ONE PART HUMUS BY VOLUME, THOROUGHLY MIXED PRIOR TO BACKFILLING IN PITS. BACKFILLING SHALL BE IN 6" LIFTS WITH EACH LIFT WATER SETTLED WITHOUT PUDDLING.
16.

CONTRACTOR SHALL STAKE TREE AND SHRUB LOCATIONS FOR 5-GALLON PLANTS AND LARGER. STAKES SHALL BE MARKED WITH PLANT NAME OR PLANT LEGEND ITEM NUMBER FROM PLANS.
17.

ALL EXISTING (GAS, ELECTRIC, WATER, ETC.) COVERS AND BOXES SHALL REMAIN UNCOVERED. CONTRACTOR TO ADJUST TO FINAL GRADE AS NECESSARY. NON-PAY ITEM (NPI) UNLESS OTHERWISE NOTED.
18.

THE CONTRACTOR SHALL BE RESPONSIBLE FOR LOCATING THE UNDERGROUND SPRINKLER SYSTEMS IN ADVANCE OF CONSTRUCTION. THE SPRINKLER SYSTEM LOCATIONS NOTED ON PLANS ARE FOR REFERENCE ONLY.
19.

CONTRACTOR TO VERIFY DEPTH OF ALL INLET STRUCTURES AND SPRINKLER SYSTEMS PRIOR TO TRENCHING FOR LOW-FLOW CHANNEL.
20.

CONTRACTOR TO PROVIDE PUMPING WITHIN FIVE (5) DAYS AFTER THE NOTICE TO PROCEED IS GIVEN AS REQUIRED TO DRY THE AREA SUFFICIENTLY TO BEGIN CONSTRUCTION.
21.

CONTRACTOR SHALL ARRANGE FOR SPRINKLER SYSTEM SHUTDOWN DURING CONSTRUCTION BY CONTACTING THE ENGINEERING INSPECTOR.
22.

NO ROCKS LARGER THAN 1" IN DIAMETER SHALL BE ALLOWED IN THE TOP SIX (6) INCHES OF TOPSOIL WHERE TURF ESTABLISHMENT IS SPECIFIED. ROCK REMOVAL AS NECESSARY IS A NON-PAY (NPI) ITEM UNLESS OTHERWISE NOTED.
23.

WHERE CALICHE IS ENCOUNTERED IN PLANT PITS, DEPTH AND WIDTH OF PIT SHALL BE INCREASED BY ONE-THIRD (1/3) OVER SPECIFICATION, AND A LIQUID PENETRATOR, "AL-KALICHE" OR EQUAL, SHALL BE INCORPORATED FOR EACH PIT PER MANUFACTURER'S RECOMMENDATIONS.
24.

CONTRACTOR SHALL INSTALL DECOMPOSED GRANITE TO A ROLLED DEPTH PER THE APPROVED PLANS AND SPECIFICATIONS. DECOMPOSED GRANITE SHALL BE PER THE APPROVED PLANS AND SPECIFICATIONS WITH THE COLOR AS SPECIFIED ON THE PLANS. PRE-EMERGENT HERBICIDE SHALL BE APPLIED BEFORE AND AFTER PLACEMENT OF DECOMPOSED GRANITE PER THE MANUFACTURER'S RECOMMENDATIONS. PRE-EMERGENT HERBICIDE SHALL BE SURFLAN, DACTHAL, OR APPROVED EQUAL. SAMPLE TO BE PROVIDED FOR CITY REVIEW AND APPROVAL. CONTRACTOR SHALL WASH OFF ROCK MULCH ONCE FINAL PLACEMENT HAS OCCURRED.
25.

RESTORE ALL EXISTING LANDSCAPE IRRIGATION SYSTEMS, COMPONENTS AND LANDSCAPE AREAS IMPACTED BY ANY WORK UNDER THIS CONTRACT. RESTORE ALL EXISTING IRRIGATION AND LANDSCAPE IN ACCORDANCE WITH THE LANDSCAPE RESTORATION NOTES INDICATED WITHIN THESE DOCUMENTS. AT A MINIMUM, ALL RESTORATION SHALL BE IN ACCORDANCE WITH M.A.G. SPECIFICATION 107.9 - PROTECTION AND RESTORATION OF PROPERTY AND LANDSCAPE. ALL RESTORATION WORK SHALL BE COMPLETED TO THE SATISFACTION OF THE CITY OF MESA ENGINEER.
26.

ALL RESTORATION WORK SHALL BE COMPLETED IN ACCORDANCE WITH THE REFERENCED DETAILS AND ANY ADDITIONAL DETAILS PROVIDED.
27.

REFER TO LANDSCAPE PLANTING SHEETS AND ENGINEERING DRAWINGS FOR ADDITIONAL RESTORATION NOTES AND REQUIRED COORDINATION.

PLANTING

1.

REQUIRED TREES SHALL BE MINIMUM SIZE AS SPECIFIED IN THE ARIZONA NURSERY ASSOCIATION "RECOMMENDED TREE SPECIFICATIONS" LATEST EDITION. 11-33-2(B)
2.

ALL LANDSCAPE MATERIAL INSTALLED SHALL BE MAINTAINED BY THE OWNER/OR LESSEE IN ACCORDANCE WITH THE APPROVED LANDSCAPE PLAN. 11-33-2(I).
3.

NOTE EITHER A "FORMAL" OR "NATURAL" LANDSCAPE MAINTENANCE PROGRAM AND THAT THE LANDSCAPE SHALL BE MAINTAINED IN ACCORDANCE WITH THE BEST MANAGEMENT PRACTICE OF THE LANDSCAPING INDUSTRY. 11-33-2(I)4.
4.

ALL TREES AND SHRUBS LOCATED IN THE LINE OF SIGHT WILL BE MAINTAINED FOR A CLEAR AREA BETWEEN 3' TO 7' AND SHOW LINE OF SIGHT ON LANDSCAPE PLAN.
5.

REQUIRED LANDSCAPE AREAS SHALL BE FREE FROM ENCROACHMENT BY ANY USE, STRUCTURE, VEHICLE OR FEATURE NOT A PART OF THE LANDSCAPING DESIGN. 11-33-2(A).
6.

BACKFLOW PREVENTERS 2" OR LARGER SHALL BE SCREENED WITH LANDSCAPE MATERIAL LOCATED WITHIN A 6' RADIUS OF THE BACKFLOW PREVENTERS. ALL BACKFLOW PREVENTERS LESS THAN 2" SHALL BE PLACED IN A WIRE MESH BASKET AND PAINTED GREEN. (THE POLICE DEPARTMENT'S CRIME PREVENTION DIVISION HAS REQUESTED THE CHANGE TO GREEN TO DISCOURAGE THEFT.)
1.

ALL PLANT MATERIAL AND SPECIFICATIONS TO CONFORM TO THE ARIZONA NURSERY ASSOCIATION STANDARDS UNLESS OTHERWISE NOTED. THE OWNER'S REPRESENTATIVE RESERVES THE RIGHT TO REFUSE PLANT MATERIAL NOT MATCHING THE STANDARD FOR SIZE, HEALTH, AND FORM.
2.

DO NOT MAKE SUBSTITUTIONS; IF SPECIFIED LANDSCAPE MATERIAL IS NON-OBTAINABLE, SUBMIT PROOF OF NON-AVAILABILITY FROM AT LEAST FIVE SUPPLIERS TO OWNER'S REPRESENTATIVE, TOGETHER WITH A PROPOSAL FOR SUBSTITUTION OF EQUIVALENT MATERIAL FOR ACCEPTANCE.
3.

LAYOUT INDIVIDUAL TREE AND PLANT LOCATIONS AND AREAS FOR MULTIPLE PLANTINGS, STAKE LOCATIONS AND OUTLINE AREAS AND SECURE OWNER'S REPRESENTATIVE ACCEPTANCE BEFORE START OF PLANTING WORK. MAKE MINOR ADJUSTMENTS AS MAY BE DIRECTED.
4.

PLANT QUANTITIES LISTED IN THE LANDSCAPE SCHEDULE ARE FOR THE CONVENIENCE OF THE CONTRACTOR. IN THE CASE OF ANY DISCREPANCIES, PLANS SHALL OVERRIDE THE LANDSCAPE AND BID SCHEDULE QUANTITIES. CONTRACTOR SHALL VERIFY QUANTITIES SHOWN ON THE PLANS AND BASE THEIR BID ACCORDINGLY.
5.

ALL PLANT MATERIALS SHALL HAVE A MINIMUM SETBACK FROM EDGE OF CURBS, WALKS, WALLS, PADS, ETC. AS FOLLOWS UNLESS OTHERWISE DIRECTED BY THE OWNER'S REPRESENTATIVE AS FOLLOWS:

• TREES 5 FOOT MINIMUM SETBACK

• SHRUBS 3 FOOT MINIMUM SETBACK

• GROUND COVER AN 18 INCH MINIMUM SETBACK
6.

EXCAVATE PLANTING PITS, AS SHOWN ON THE DRAWINGS AND SCHEDULES. LOOSEN HARD SUBSOIL IN BOTTOM OF EXCAVATION. TEST DRAINAGE OF TREE, SHRUB AND PLANT PITS BY FILLING WITH WATER TWICE IN SUCCESSION. CONDITIONS PERMITTING THE RETENTION OF WATER IN PLANTING PITS FOR MORE THAN TWENTY-FOUR (24) HOURS SHALL BE BROUGHT TO THE ATTENTION OF THE OWNER'S REPRESENTATIVE. DRAINAGE CHIMNEY WHEN AUTHORIZED, IF PLANT PIT DOES NOT DRAIN WITHIN 24 HOURS, THEN DRILL ONE (1) 6" DIAMETER X 24" DEEP HOLE. AT EDGE OF EXCAVATED PIT, RE-TEST PERCOLATION PER SPECIFICATIONS, CERTIFY PERCOLATION AND FILL HOLE WITH PEA GRAVEL. COORDINATE LOCATION WITH TREE STAKES.
7.

IF ROCK, UNDERGROUND CONSTRUCTION, ADVERSE DRAINAGE CONDITIONS, OR OTHER OBSTRUCTIONS ARE ENCOUNTERED IN EXCAVATION FOR PLANTING OF TREES, SHRUBS, OR PLANTS NOTIFY OWNER'S REPRESENTATIVE. NEW LOCATIONS MAY BE DETERMINED, OR INSTRUCTIONS MAY BE ISSUED TO DIRECT REMOVAL OF OBSTRUCTION. PROCEED WITH WORK ONLY AFTER APPROVAL OF OWNER'S REPRESENTATIVE.
8.

ALL PLANT BACKFILL MIXES SHALL BE AMENDED AS DESCRIBED ON THE LANDSCAPE DRAWING DETAILS, UNLESS SUPERCEDED BY SPECIFIC SOIL TESTING AND OR LANDSCAPE SPECIFICATIONS. BACKFILL MIX SHALL BE PLACED IN 6" LIFTS AND TAMPED INTO PLACE TO OBTAIN COMPACTION. NO TRANSPLANTING SHALL BE DONE WHEN SOIL IS EXCESSIVELY WET. DO NOT COUNTERSINK AROUND CACTI OR SUCCEULENTS. PROVIDE POSITIVE DRAINAGE AWAY FROM PLANT.
9.

ALL SHRUBS SHALL HAVE A FULL HEAD THAT COVERS THE CAN DIAMETER (CAN FULL) AND A MINIMUM OF THREE STEMS/BRANCHES.
10.

PLANT BACKFILL MIX SHALL CONFORM TO LANDSCAPE DETAIL NOTES, UNLESS OTHERWISE SPECIFIED.
11.

FERTILIZER TABLETS SHALL BE AGRIFORM (21 GRAM 20-10-5) OR EQUAL. QUANTITY OF TABLETS SHALL BE PLACED ½ THE DEPTH OF THE ROOTBALL AT THE FOLLOWING RATE:

• 1 TABLET PER 1 GALLON CONTAINER

• 2 TABLETS PER 5 GALLON CONTAINER

• 3 TABLETS PER 15 GALLON CONTAINER

• 4 TABLETS PER 24" BOX

• 6 TABLETS PER 36" BOX

• 8 TABLETS PER 48" BOX

• AT A RATE OF 1 TABLET PER EACH ADDITIONAL 6" BOX SIZE.

WHEN MULTIPLE QUANTITIES OF TABLETS ARE REQUIRED THEY SHALL BE EQUALLY SPACED AT THE SPECIFIED DEPTH.

MAINTENANCE OF LANDSCAPING

1.

AN IRRIGATION SYSTEM SHALL BE PROVIDED TO ALL LANDSCAPED AREAS CONTAINING LIVING PLANT MATERIALS, UNLESS OTHERWISE APPROVED.
2.

LACK OF MAINTENANCE AS ABOVE DESCRIBED, SHALL CONSTITUTE A VIOLATION OF THIS ORDINANCE. THE PROPERTY OWNER AND/OR OCCUPANT OR LESSEE SHALL BE HELD JOINTLY AND SEVERALLY LIABLE FOR ANY INFRACTION OF THE REQUIREMENTS SET FORTH IN THIS CHAPTER.
3.

IN THE EVENT A PLANT SPECIFIED AS REQUIRED ON AN APPROVED LANDSCAPE PLAN DIES OR IS REMOVED, THE PROPERTY OWNER AND OR OCCUPANT OR LESSEE ARE JOINTLY RESPONSIBLE AND SHALL REPLACE THE PLANT WITH ONE OF A SIMILAR SPECIES WITH A SIMILAR SIZE AS SPECIFIED IN THE APPROVED LANDSCAPE PLAN.
4.

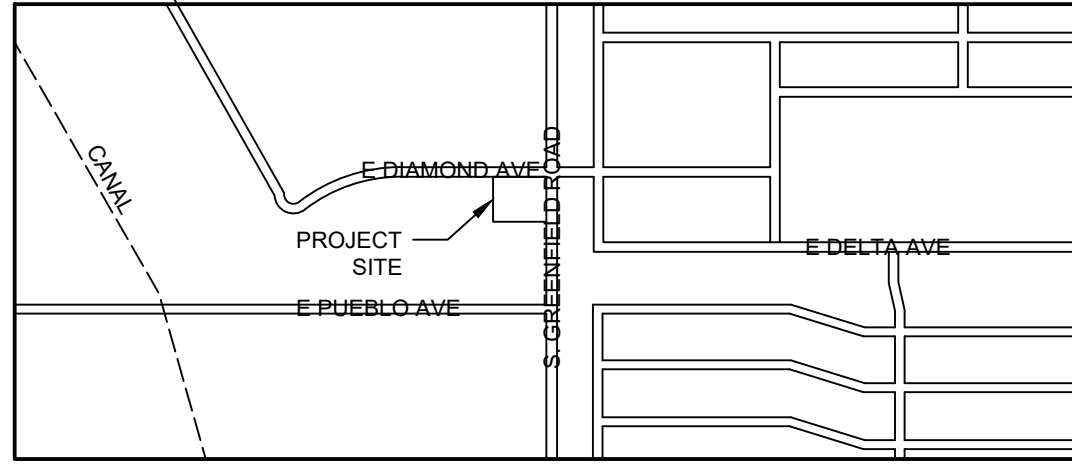
LANDSCAPE PLANS SHALL DESIGNATE PLANT MATERIAL TO BE KEPT IN EITHER A NATURAL STATE (MINIMAL PRUNING) OR A FORMAL STATE (REGULARLY TRIMMED AND PRUNED TO A SCULPTED APPEARANCE). PLANT MATERIALS SHALL BE MAINTAINED AS DESIGNATED.
5.

PROPERTY OWNERS SHALL MAINTAIN LANDSCAPING IN ACCORDANCE WITH THE BEST MANAGEMENT PRACTICES OF THE LANDSCAPING INDUSTRY. POLLARDING OF TREES AND SIMILAR PRACTICES OF OVER PRUNING ARE DISCOURAGED.

SHEET INDEX

LC100	LANDSCAPE COVER
LI100	LANDSCAPE INVENTORY
LS100	LANDSCAPE PLAN
LS200	LANDSCAPE DETAILS
LS201	LANDSCAPE DETAILS

VICINITY MAP



PLANT IMAGES

TREE



CAESALPINIA CACALACO  
CASALOTE SMOOTHIE



CHIOPSIS LINEARIS  
DESERT WILLOW



QUERCUS FUSIFORMIS  
JOAN LIONETTI LIVE OAK

SHRUB



AMBROSIA DELTOIDEA  
TRIANGLE-LEAF BURSAGE



DALEA PULCHRA  
BUSH DALEA



ENCELIA FARINOSA  
BRITTLEBUSH



EREMOPHILA HYGROPHANA  
EMU BUSH



ERICAMERIA LARICIFOLIA  
TURPENTINE BUSH



LARREA TRIDENTATA  
CREOSOTE



SPHAERALCEA AMBIGUA  
GLOBE MALLOW

ACCENTS



FEROCACTUS CYLINDRACEUS  
COMPASS BARREL



FOUQUIERIA SPLENDENS  
OCOTILLO



HESPERALOE PARVIFLORA  
"BRAKE LIGHTS"  
RED YUCCA



OPUNTIA SANTA RITA  
SANTA RITA PRICKLY PEAR

GROUND COVER



GLANDULARIA GOODDINGII  
GOODDING'S VERBENA



LANTANA X 'NEW GOLD'  
NEW GOLD LANTANA

INERT MATERIALS



DECOMPOSED GRANITE  
MADISON DESERT GOLD  
1/2" SCREENED, 2" DEPTH, MIN.



BOULDER  
MADISON DESERT GOLD  
LARGE 3'x3'x2'

Rev.	Date	Description

**Perlman**  
Architects of Arizona

Seal  
**NOT FOR  
CONSTRUCTION**

DRAWN BY: TRR  
ENGINEER  
APPROVED BY: WH

ACTIVITY:  
PROJ. NO.:

CITY OF MESA  
ENGINEERING DEPARTMENT

MESA FIRE-MEDICAL STATION NO. 205  
730 S. GREENFIELD RD., MESA 85206

LANDSCAPE COVER

DRAWING  
LC100

SHEET  
1 OF

CATALOG NUMBER:

OPEN SPACE REQUIREMENT

SQUARE FEET REQUIRED: \_\_\_\_\_  
SQUARE FEET MET: 3135





LANDSCAPE INVENTORY PLAN

INVENTORY LEGEND

PLANT #	BOTANICAL NAME	COMMON NAME	HT. (FT)	CAL. (IN)	CONDITION	RECOMMENDATION
1	WASHINGTONIA FILIFERA	CALIFORNIA PALM	40'	14"	GOOD	NO SALVAGE
2	WASHINGTONIA FILIFERA	CALIFORNIA PALM	38'	14"	GOOD	NO SALVAGE

LANDSCAPE INVENTORY NOTES

1. PLANT LOCATION SHOWN ON THE PLANS MAY DIFFER FROM THE ACTUAL LOCATIONS IN THE FIELD. SALVAGE CONTRACTOR TO VERIFY ALL LOCATIONS AND PLANT CONDITIONS IN THE FIELD.
2. WHERE PLANTS ARE LOCATED CLOSE TO AN EXISTING IRRIGATION SYSTEM, THAT IRRIGATION SYSTEM SHALL BE PROTECTED IN PLACE.

Rev.	Date	Description

**Perlman**  
Architects of Arizona

NOT FOR  
CONSTRUCTION

DRAWN BY: TRR  
ENGINEER  
APPROVED BY: WH

ACTIVITY:  
PROJ. NO.:

CITY OF MESA  
ENGINEERING DEPARTMENT

MESA FIRE-MEDICAL STATION NO. 205  
730 S. GREENFIELD RD., MESA 85206

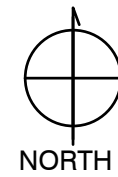
LANDSCAPE/INVENTORY  
PLAN

DRAWING  
LI200

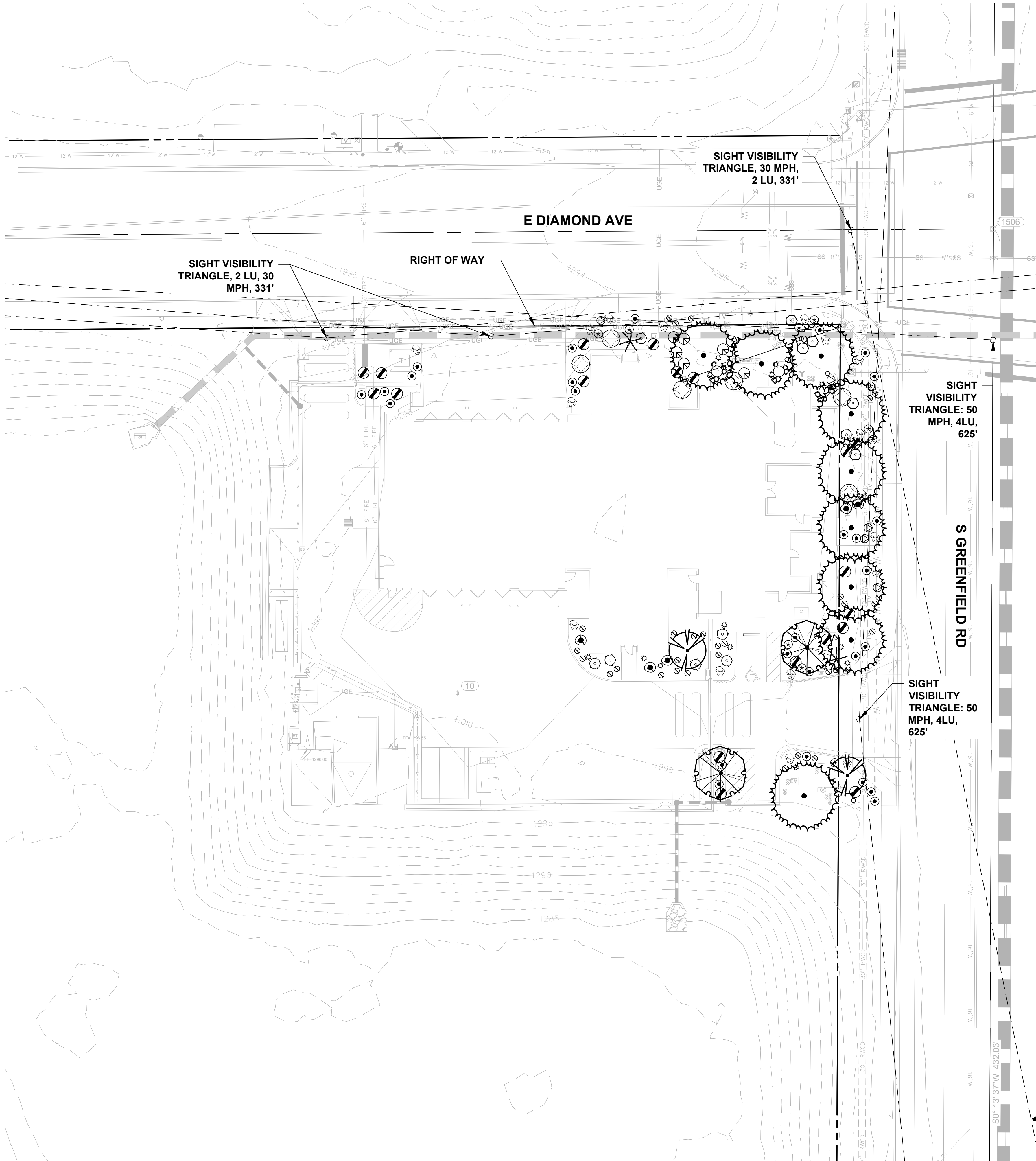
SHEET  
2 OF

CATALOG NUMBER:





ELEVATION: (C.O.M. DATUM)



LANDSCAPE SCHEDULE

SYMBOL	BOTANICAL NAME	COMMON NAME	CONT	CAL	QTY
TREES					
	CAESALPINIA CACALACO 'SMOOTHIE'™	SMOOTHIE CASCALOTE	24"BOX	1.5" CAL.	2
	CHILOPSIS LINEARIS	DESERT WILLOW	24"BOX	1.5" CAL.	2
	QUERCUS FUSIFORMIS 'JOAN LIONETTI'	JOAN LIONETTI LIVE OAK	24"BOX	1.5" CAL.	9
SHRUBS					
	AMBROSIA DELTOIDEA	TRIANGLELEAF BURSAGE	5 GAL		5
	DALEA PULCHRA	BUSH DALEA	5 GAL		7
	ENCELIA FARINOSA	BRITTLEBUSH	5 GAL		19
	EREMOPHILA HYGROPHANA	EMU BUSH	5 GAL		6
	ERICAMERIA LARICIFOLIA	TURPENTINE BUSH	5 GAL		6
	LARREA TRIDENTATA	CREOSOTE BUSH	5 GAL		6
	SPHAERALCEA AMBIGUA	GLOBEMALLOW	5 GAL		5
ACCENTS					
	FEROCACTUS CYLINDRACEUS	COMPASS BARREL	5 GAL		14
	FOUQUIERIA SPLENDENS	OCOTILLO	8-10 CANES		2
	HESPERALOE PARVIFLORA 'BRAKELIGHTS'™	BRAKELIGHTS RED HESPERALOE	5 GAL		10
	OPUNTIA 'SANTA RITA'	SANTA RITA PRICKLY PEAR	5 GAL		3
GROUNDCOVERS					
	GLANDULARIA GOODDINGII	GOODDING'S VERBENA	1 GAL		33
	LANTANA X 'NEW GOLD'	NEW GOLD LANTANA	1 GAL		27

LANDSCAPE PLAN

FRONTAGE LANDSCAPE REQUIREMENT  
1 TREE & 4 SHRUB REQUIRED PER 25 LINEAR FEET  
EXISTING FRONTAGE LENGTH: 289 LF  
FRONTAGE LANDSCAPED REQUIRED: 12 TREES & 48 SHRUBS  
FRONTAGE LANDSCAPE MET: 11 TREES, 2 OCOTILLO, & 48 SHRUBS

Rev.	Date	Description

**Perlman**  
Architects of Arizona

NOT FOR CONSTRUCTION

DRAWN BY: TRR  
ENGINEER: WH

ACTIVITY:  
PROJ. NO.:

CITY OF MESA  
ENGINEERING DEPARTMENT

MESA FIRE-MEDICAL STATION NO. 205  
730 S. GREENFIELD RD., MESA 85206

LANDSCAPE PLAN

DRAWING  
LS100

SHEET  
3 OF

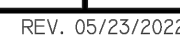
CATALOG NUMBER:



(C.O.M. DATUM)

REV. 09/26/2016

REV. 05/23/2022

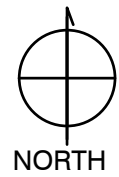


REV.05/23/2022

**Perlman**  
Architects of Arizona

CATALOG NUMBER

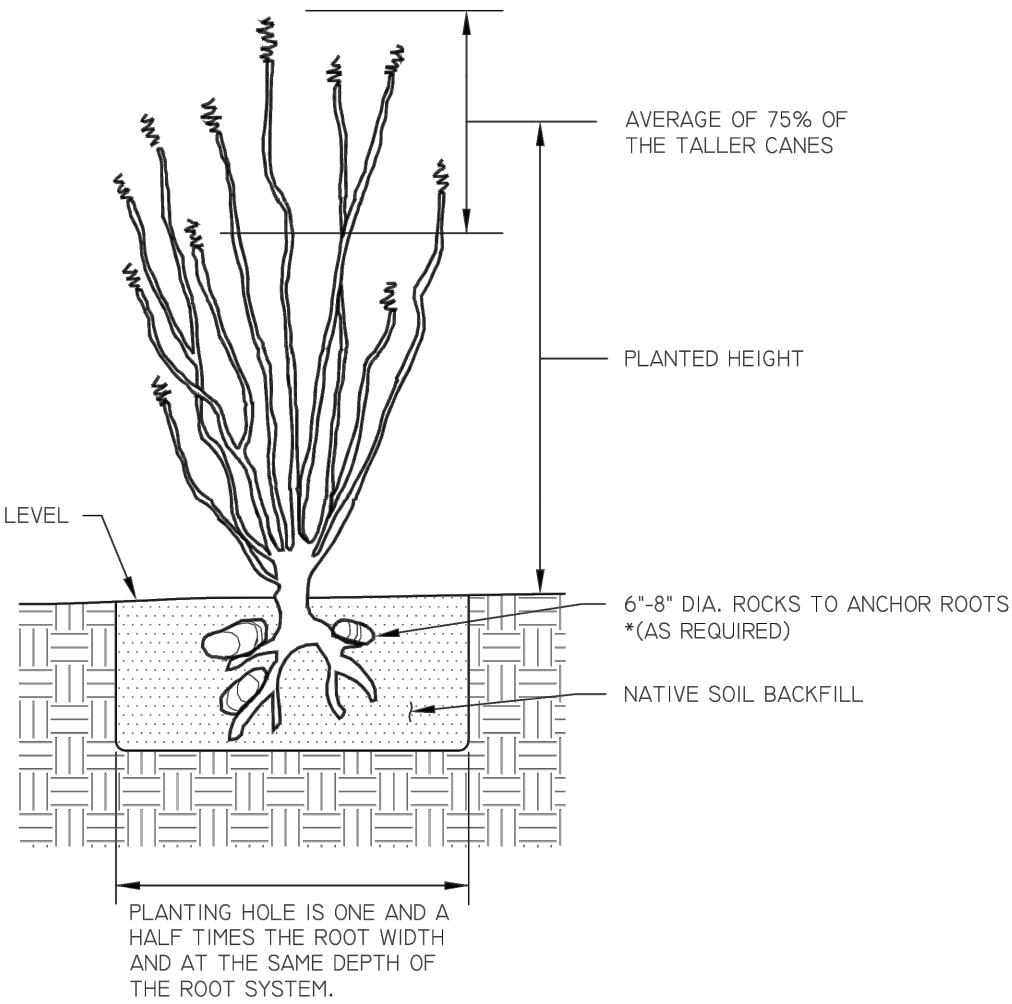




ELEVATION: (C.O.M. DATUM)

NOTES

1. ROOT PRUNE ALL SHREDDED OR DAMAGED ROOTS. TEAR DRIED SHEATH OFF ROOTS. IF THERE ARE CRUSHED OR DAMAGED ROOTS, MAKE CLEAN CUTS. ENSURE ALL WOUNDS TO THE ROOT SYSTEM ARE SEALED BEFORE PLANTING BY ALLOWING TIME FOR SELF-SEALING OR APPLICATION OF WETTABLE DUSTING SULFUR (1.5 LBS).
2. PLANT NO DEEPER THAN WHAT THE PLANT WAS PREVIOUSLY PLANTED.
3. BACKFILL TO CONSIST OF CLEAN NATIVE SOIL.
4. APPLY NAPHYL, ACETIC ACID OR 'B-I' OR APPROVED ROOTING HORMONE IN ACCORDANCE WITH MANUFACTURER'S INSTRUCTIONS.
5. AFTER PLANTING, DO NOT WATER FOR A PERIOD OF SEVEN TO TEN DAYS TO ALLOW ANY ROOTS THAT MAY HAVE BEEN DAMAGED DURING PLANTING TO CALLUS OFF.
6. WATER WEEKLY THROUGH SUMMER, UNLESS INSTRUCTED OTHERWISE.
7. BARE ROOTS SHALL NOT BE OUT OF THE GROUND FOR MORE THAN FIVE DAYS BEFORE PLANTING.
8. RETAIN THE NATIVE PLANT TRANSPORT TAG AS ISSUED FROM THE ARIZONA DEPARTMENT OF AGRICULTURE AND GIVE TO THE COM INSPECTOR.



NOT TO SCALE

REV. 09/27/2016

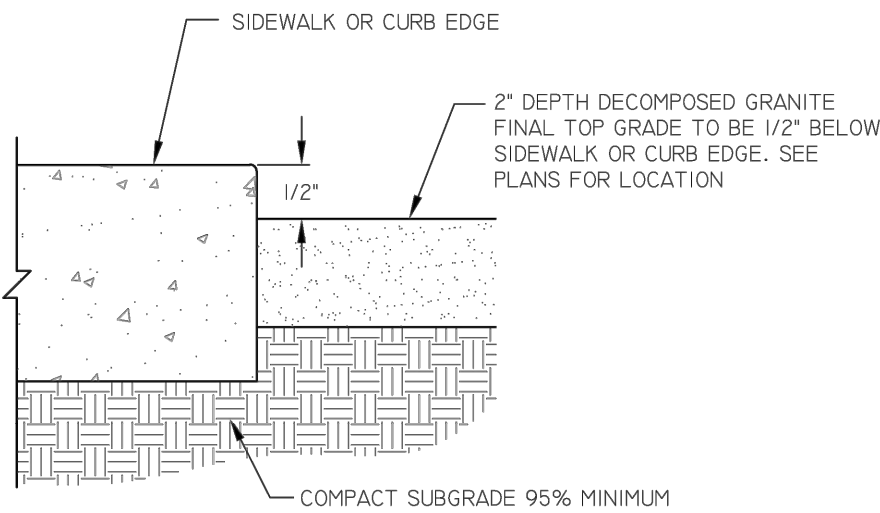


OCOTILLO PLANTING DETAIL

DETAIL NO.  
M-103.09

NOTE

CONTRACTOR SHALL INSTALL D.G. AS FOLLOWS:  
PLACE AND ROLL DECOMPOSED GRANITE TO 2" TOTAL DEPTH OVER 95% COMPACTED SUBGRADE. PRE-EMERGENT HERBICIDE SURFLAN, DACTHAL OR APPROVED EQUAL SHALL BE APPLIED BEFORE AND AFTER GRANITE PLACEMENT. (CONTRACTOR SHALL SUBMIT DECOMPOSED GRANITE SAMPLES IN RIGID PLASTIC OR METAL CONTAINERS. PROJECT NUMBER AND SUPPLIER NAME SHALL BE LABELED ON CONTAINER.)



NOT TO SCALE

REV. 03/27/2017

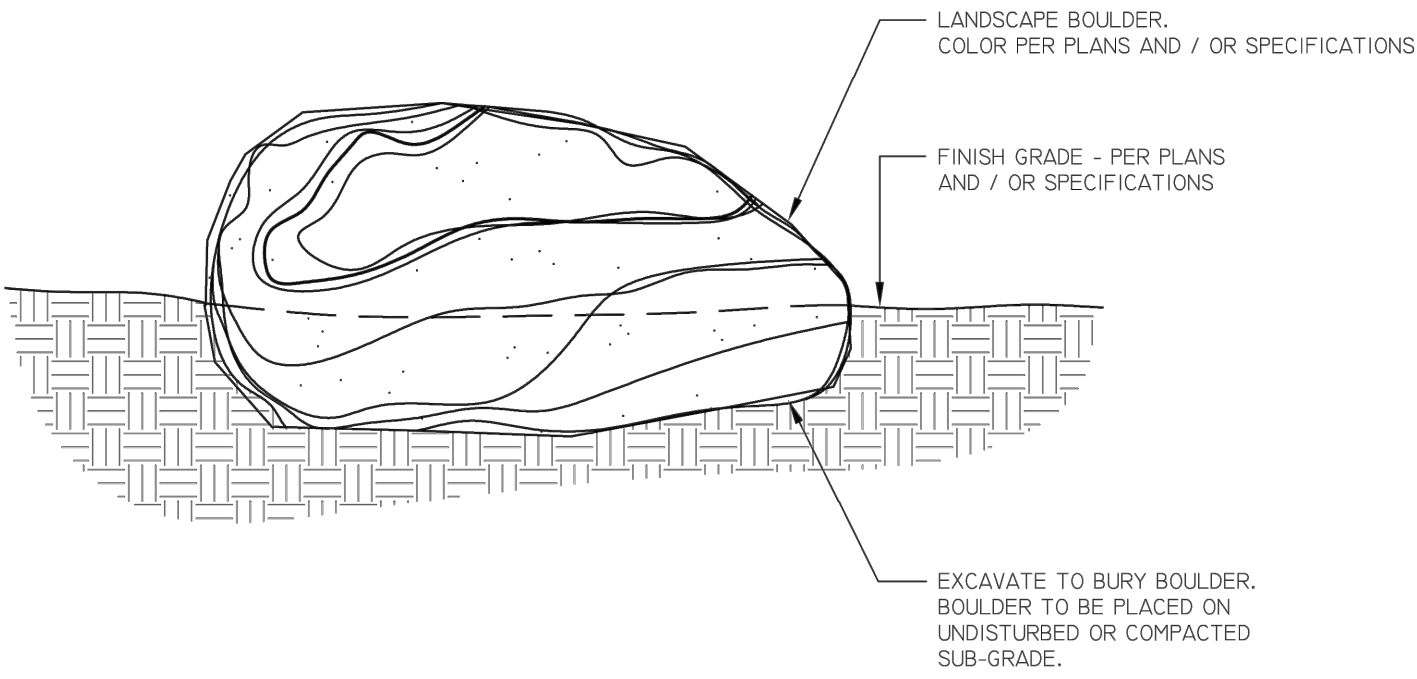


DECOMPOSED GRANITE AT CONCRETE

DETAIL NO.  
M-111.07

NOTES

1. BOULDERS TO BE PLACED IN A WAY SO SCARRING DOES NOT OCCUR. LANDSCAPE ARCHITECT OR ENGINEER TO APPROVE THE FINAL BOULDER PLACEMENT AND CONDITION.
2. BURY LOWER 1/3 OF BOULDER AS NEEDED TO ACHIEVE NATURAL APPEARANCE.
3. LANDSCAPE BOULDER SPECIFICATIONS:  
4'X4'X4' 3.0 TONS (MIN.)  
3'X3'X3' 1.5 TONS  
2'X2'X2' 1.0 TON
4. SEE PLANS FOR BOULDER SIZE AND PLACEMENT.



NOT TO SCALE

REV. 03/27/2017



LANDSCAPE BOULDER

DETAIL NO.  
M-102

Rev.	Date	Description

**Perlman**  
Architects of Arizona

NOT FOR  
CONSTRUCTION

DRAWN BY: TRR  
ENGINEER:  
APPROVED BY: WH

ACTIVITY:  
PROJ. NO.:

CITY OF MESA  
ENGINEERING DEPARTMENT

MESA FIRE-MEDICAL STATION NO. 205  
730 S. GREENFIELD RD., MESA 85206

LANDSCAPE DETAILS

DRAWING

LS300

SHEET  
7 OF

CATALOG NUMBER: