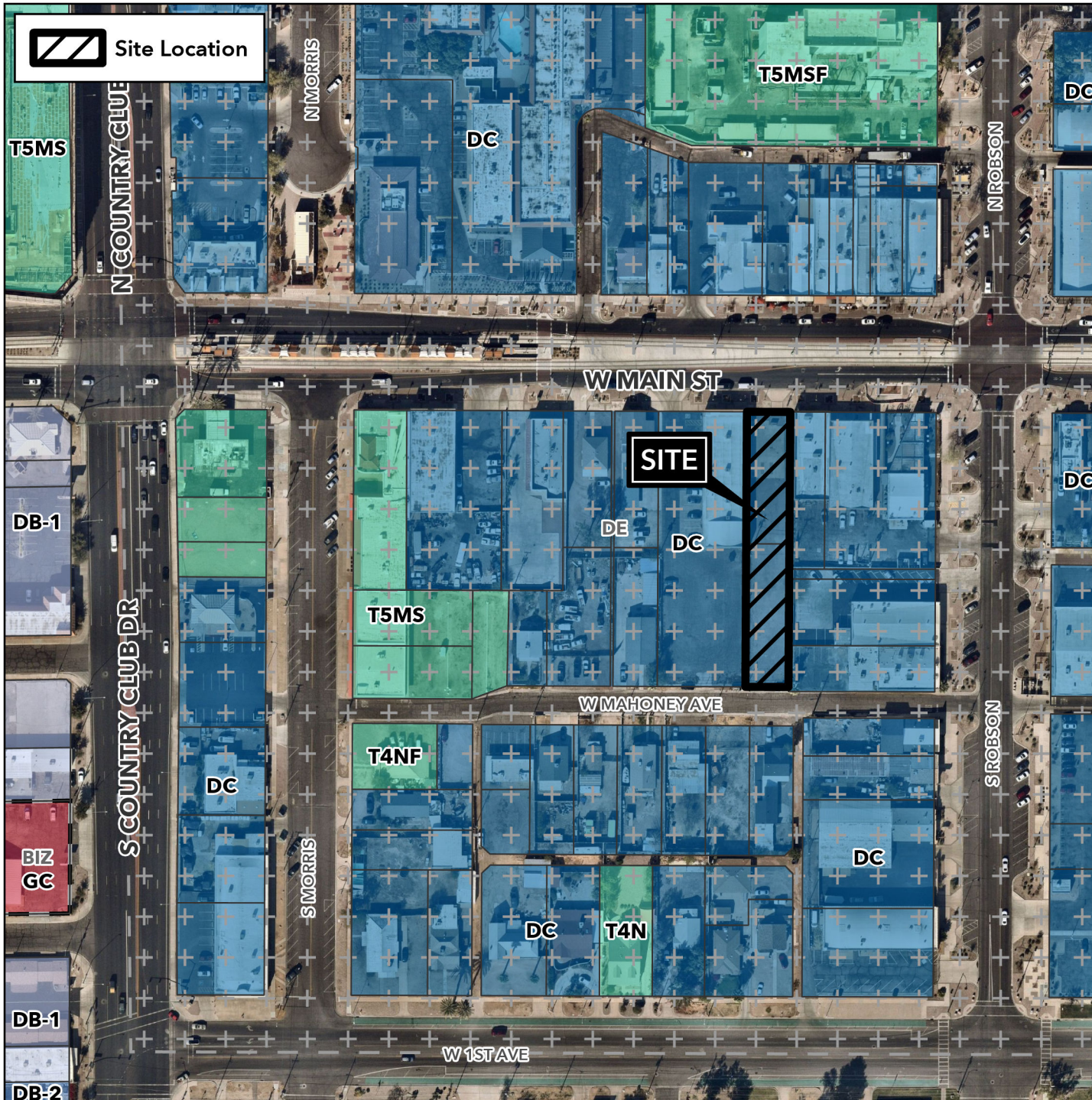


Planning and Zoning Vicinity Map: ZON25-00301

Case Details



Case:

ZON25-00301

Site / Address:

(District 4). 0.4± acres located approximately 660± feet east of the southeast corner of West Main Street and South Country Club Drive.

Request:

Site Plan Review for a 15,497± square foot small-scale commercial recreation facility.

