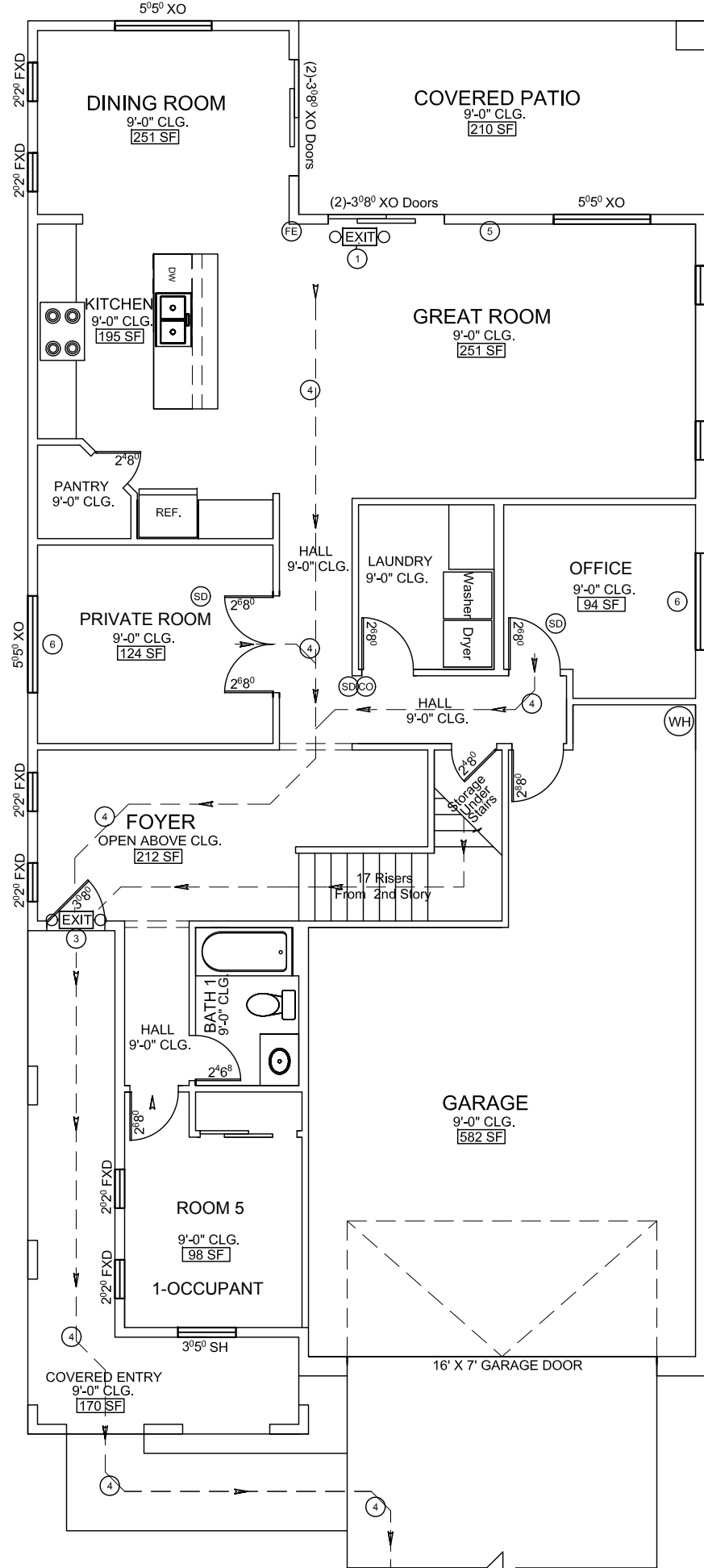
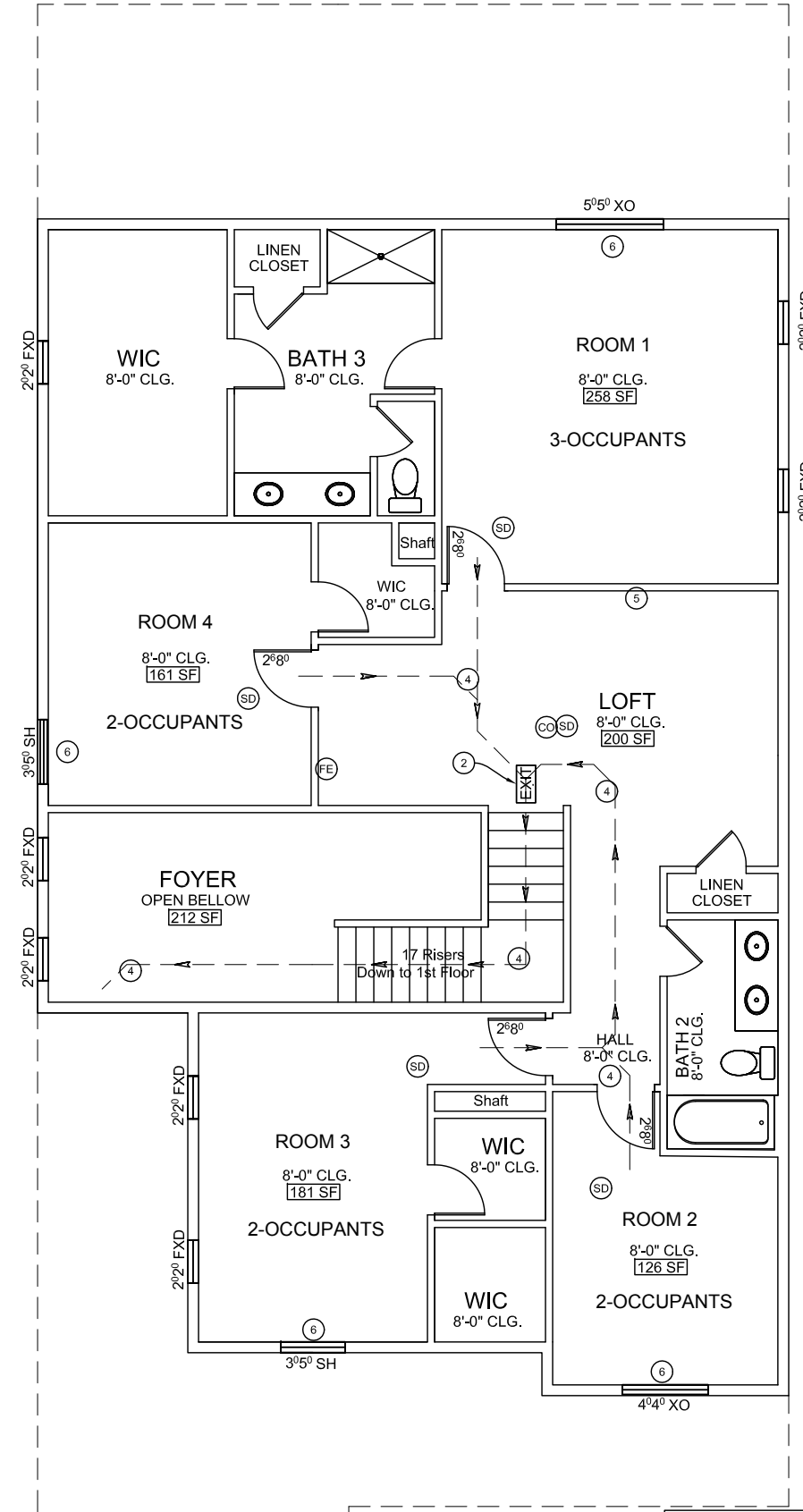


# 1st STORY FLOOR PLAN



# 2nd STORY FLOOR PLAN



### KEY NOTES

- EXIT** ACCESS SIGN & EGRESS LIGHTS COMBO (HARD WIRED WITH 90 MINUTES EMERGENCY BACK-UP POWER SOURCE REQUIRED). THE MEANS OF EGRESS LIGHTING MUST BE INSTALLED IN A WAY TO MAINTAIN A LEVEL OF 1 FOOT CANDLE AT THE WALKING SURFACE. **EXIT** EACH EXIST SIGN MUST HAVE THE WORD "EXIT" IN PLAINLY LEGIBLE LETTERS NOT LESS THAN 6 INCHES HIGH, WITH THE PRINCIPAL STROKES OF THE LETTERS IN THE WORD "EXIT" NOT LESS THAN 3/4 INCH WIDE.
- EXIT** DISCHARGE SIGN & EGRESS LIGHTS COMBO (HARD WIRED WITH 90 MINUTES EMERGENCY BACK-UP POWER SOURCE REQUIRED). THE MEANS OF EGRESS LIGHTING MUST BE INSTALLED IN A WAY TO MAINTAIN A LEVEL OF 1 FOOT CANDLE AT THE WALKING SURFACE. EACH EXIST SIGN MUST HAVE THE WORD "EXIT" IN PLAINLY LEGIBLE LETTERS NOT LESS THAN 6 INCHES HIGH, WITH THE PRINCIPAL STROKES OF THE LETTERS IN THE WORD "EXIT" NOT LESS THAN 3/4 INCH WIDE.
- EXIT** SIGN & EGRESS LIGHTS COMBO (HARD WIRED WITH 90 MINUTES EMERGENCY BACK-UP POWER SOURCE REQUIRED). THE MEANS OF EGRESS LIGHTING MUST BE INSTALLED IN A WAY TO MAINTAIN A LEVEL OF 1 FOOT CANDLE AT THE WALKING SURFACE. EACH EXIST SIGN MUST HAVE THE WORD "EXIT" IN PLAINLY LEGIBLE LETTERS NOT LESS THAN 6 INCHES HIGH, WITH THE PRINCIPAL STROKES OF THE LETTERS IN THE WORD "EXIT" NOT LESS THAN 3/4 INCH WIDE.
- TRAVEL PATH OF EGRESS TO EXIT DOORS TO THE PATH OF EXIT DISCHARGE TO THE PAVED STREET, WITH ARROW POINTING DIRECTION TO THE EXIT DOORS.
- INTERNATIONAL 4"x4" -NO SMOKING- SYMBOL WILL BE POSTED AT ALL ENTRANCES.
- ALL SLEEPING ROOMS MUST HAVE AN EMERGENCY ESCAPE AND RESCUE OPENING WITH MIN. NET CLEAR OPENING 5.7 SQFT., MIN OPENING WIDTH 20", MIN OPENING HEIGHT 24", AND NOT AT MORE THAN 44" ABOVE FIN FLOOR.

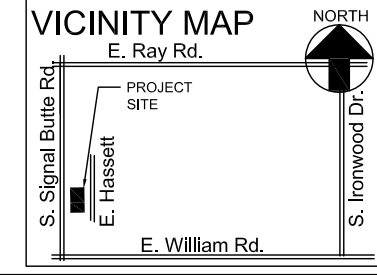
### LEGEND:

- SD** SMOKE DETECTORS, INTERCONNECTED, 120V WIRED, WITH BATTERY BACK UP IN EVERY BEDROOM AND AT HALL OUTSIDE SLEEPING AREA
- CO** CARBON MONOXIDE DETECTORS, INTERCONNECTED, AT OUTSIDE SLEEPING AREAS
- PORTABLE FIRE EXTINGUISHERS TYPE 2-A, AT EACH FLOOR
- EXIT** -EXIT DOORS
- DOOR SIZE EXAMPLE: 2'6" = 2 FEET 6 INCHES WIDE X 8 FEET 0 INCHES HIGH
- WINDOW SIZE EXAMPLE: 5'6" = 5 FEET 0 INCHES WIDE X 6 FEET 0 INCHES HIGH
- XO = OPENABLE; O = FIXED
- FXD = FIXED WINDOW
- SH = SINGLE HUNG WINDOW
- FE** -FIRE EXTINGUISHER

### AREA CALCS:

HOUSE LIVABLE AREA	3,074 SF
(FIRST FLOOR + 2ND FLOOR)	
GARAGE	582 SF
PATIO	210 SF
COVERED ENTRY	170 SF
TOTAL BUILDING PERIMETER UNDER ROOF	4,037 SF
LOT AREA	6,520 SF
LOT COVERAGE	=38.3%

**SITE DATA:**  
 SKYBRIDGE HARMONY, LLC  
 -SITE ADDRESS: 5848 E HASSETT MESA, AZ 85212  
 CONTACT INFO: (857)-237-1723  
 -S/ T/ R: 25 / 1S / 7E  
 SUBDIVISION: LA MIRA PHASE 2  
 -LOT SIZE: 6,520 S.F.; LOT # 212; LIVABLE=3,074 SF



True North

**As-Built Floor Plan**

SCALE: 1/4"=1'-0" (ON 24X36 PAPER)  
 SCALE: 1/8"=1'-0" (ON 11X17 PAPER)

**A2**

Project Address: 5848 S Hassett, Mesa AZ 85212