

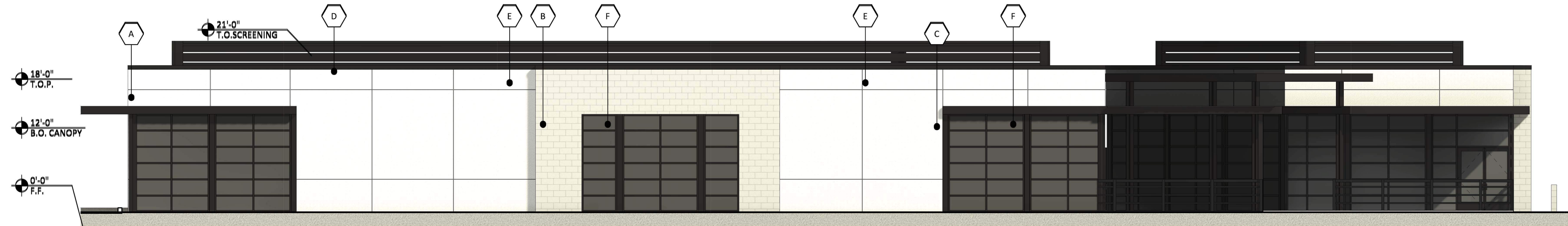
## MATERIAL AND COLORS

<b>A</b> STUCCO: FINISH: SMOOTH MFG: SHERWIN WILLIAMS COLOR: SW 7626 "ZURICH WHITE"	<b>E</b> METAL COPING: MFG: ATAS COLOR: DARK BRONZE
<b>B</b> CMU: FINISH: PRECISION MFG: SUPERLITE BLOCK COLOR: "HUNTINGTON GRAY-NW GRAY" WITH DARK GRAY RACKED GROUT	<b>F</b> MULLIONS: MFG: KAWNEER COLOR: DARK BRONZE
<b>C</b> METAL CANOPY & AWNING: MFG: ATAS COLOR: DARK BRONZE	<b>G</b> PAINTED H.M. DOORS: MFG: SHERWIN WILLIAMS COLOR: SW 7626 "ZURICH WHITE"
<b>D</b> METAL PANELING: MFG: ATAS COLOR: DARK BRONZE	<b>H</b> METAL SCREENS: COLOR: DARK BRONZE METAL WITH WIRE MESH



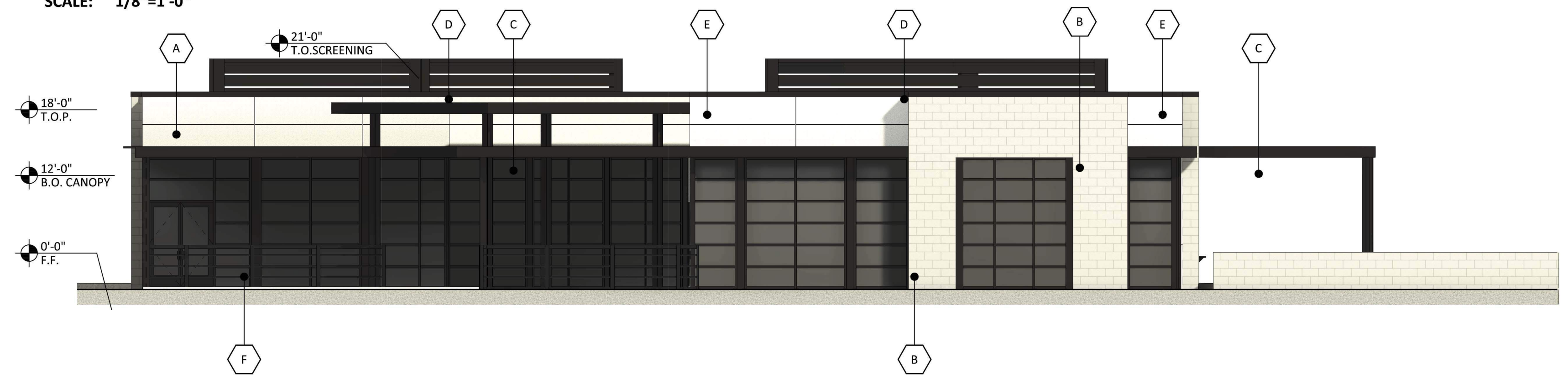
**PAD 1A NORTH ELEVATION**

SCALE: 1/8"=1'-0"



**PAD 1A WEST ELEVATION**

SCALE: 1/8"=1'-0"



**PAD 1A SOUTH ELEVATION**

SCALE: 1/8"=1'-0"



**PAD 1A EAST ELEVATION**

SCALE: 1/8"=1'-0"



**ELLIOT RETAIL**  
3501 S ELLSWORTH RD  
MESA ARIZONA 85212  
DATE: 12-22-2022 (PRELIMINARY)



© 2022 R K A A ARCHITECTS, INC. ALL RIGHTS RESERVED. THIS DRAWING IS AN INSTRUMENT OF SERVICE. IT IS THE PROPERTY OF R K A A ARCHITECTS, INC. AND MAY NOT BE DUPLICATED, USED OR DISCLOSED WITHOUT WRITTEN PERMISSION OF THE ARCHITECT.

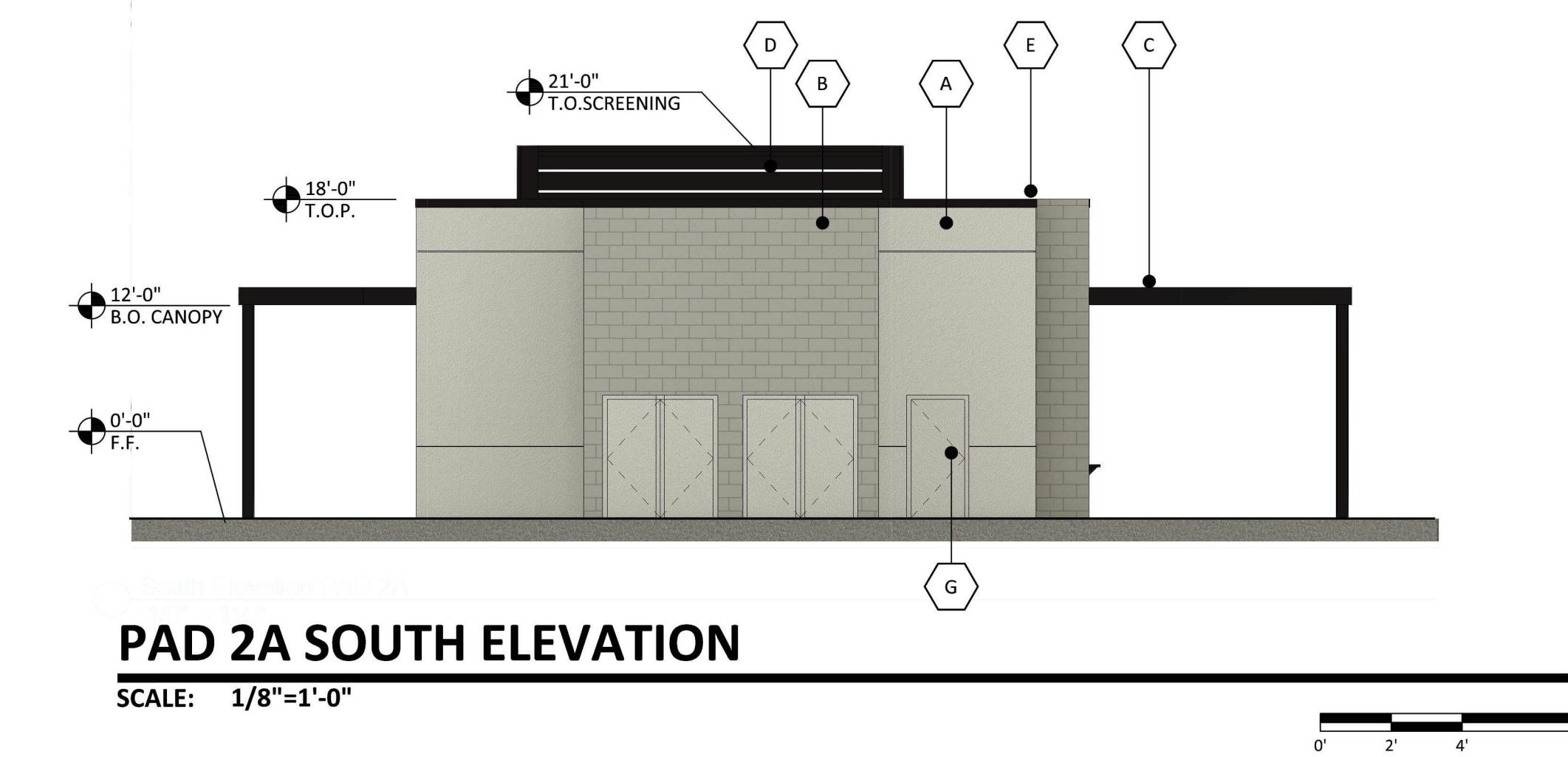
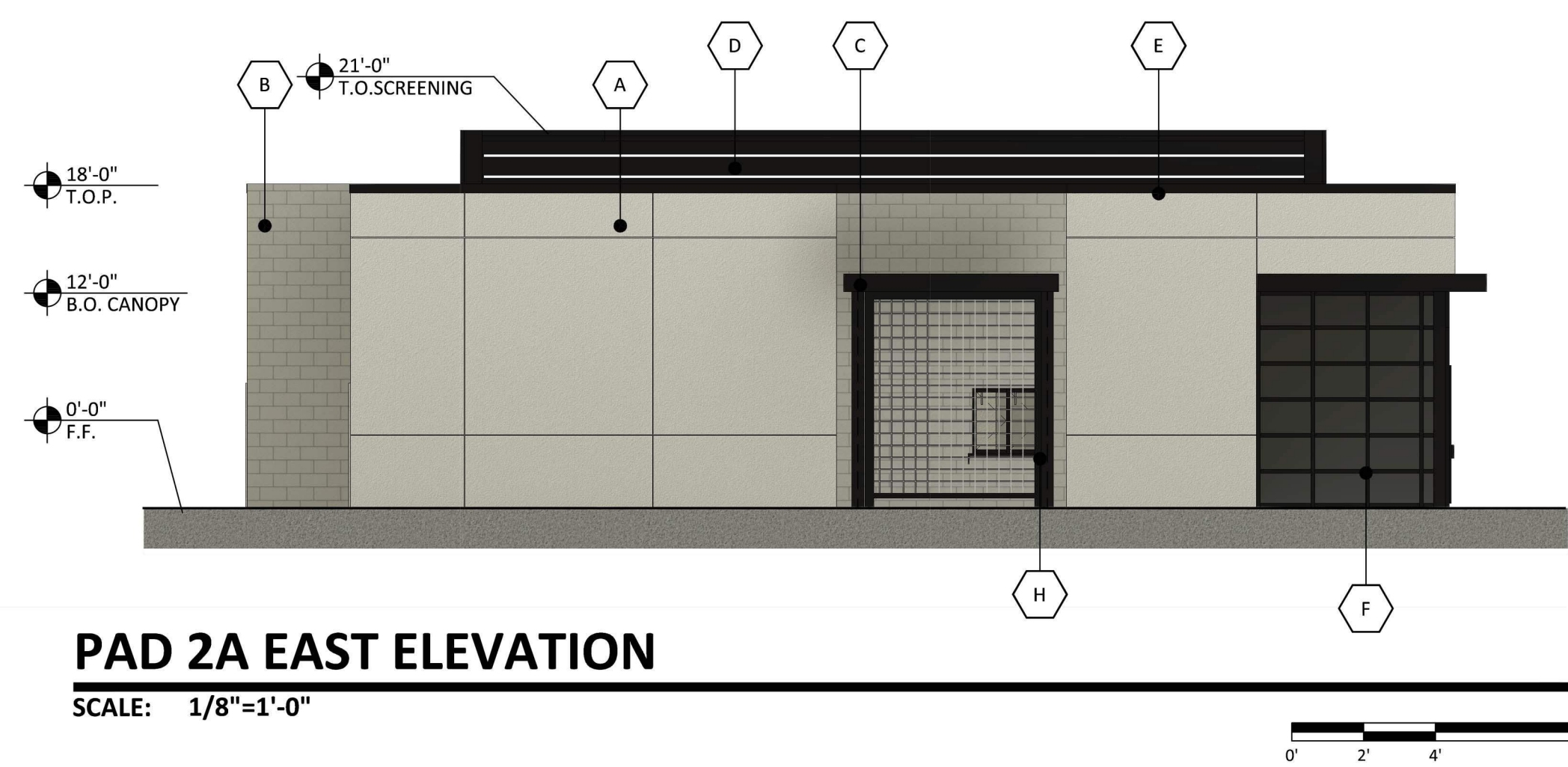
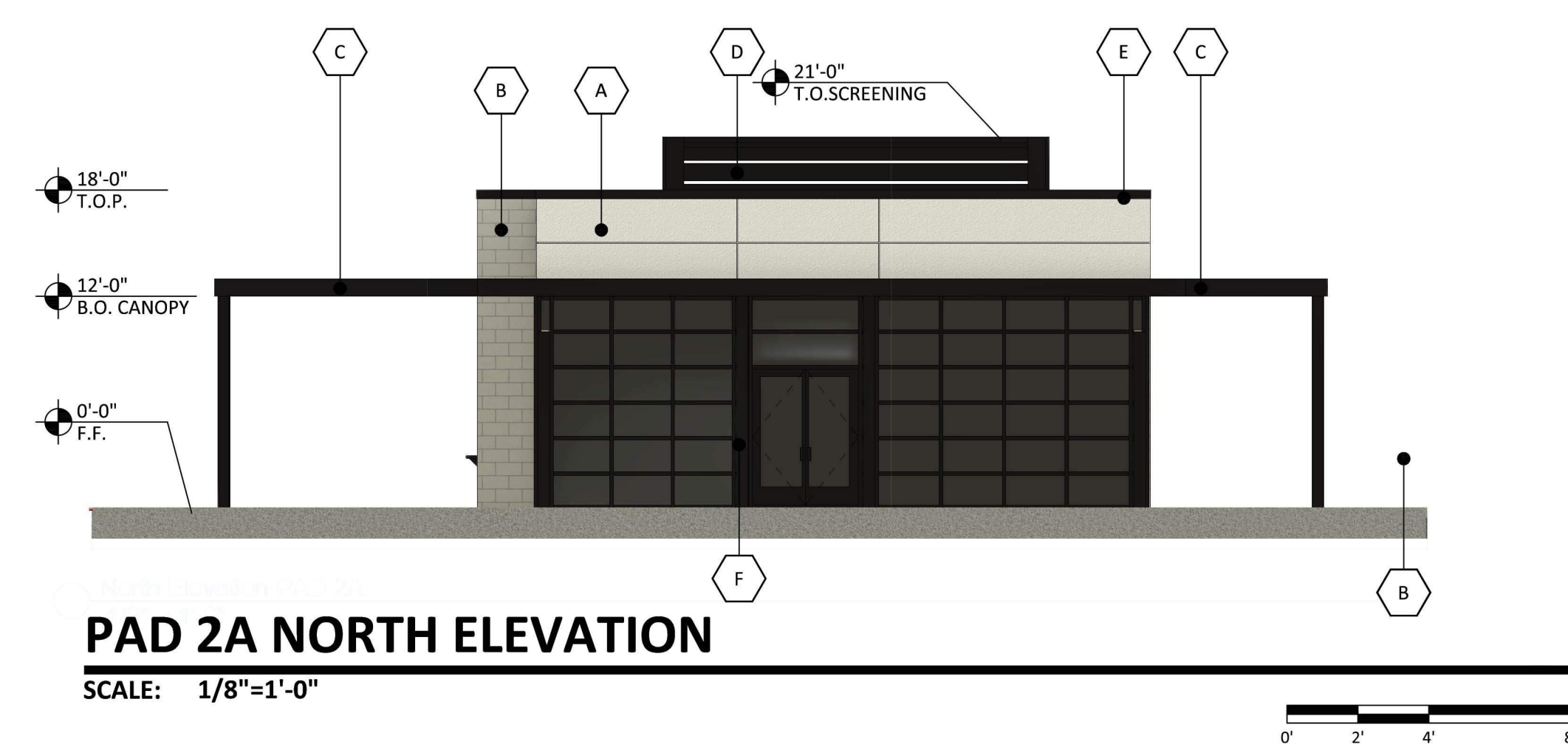
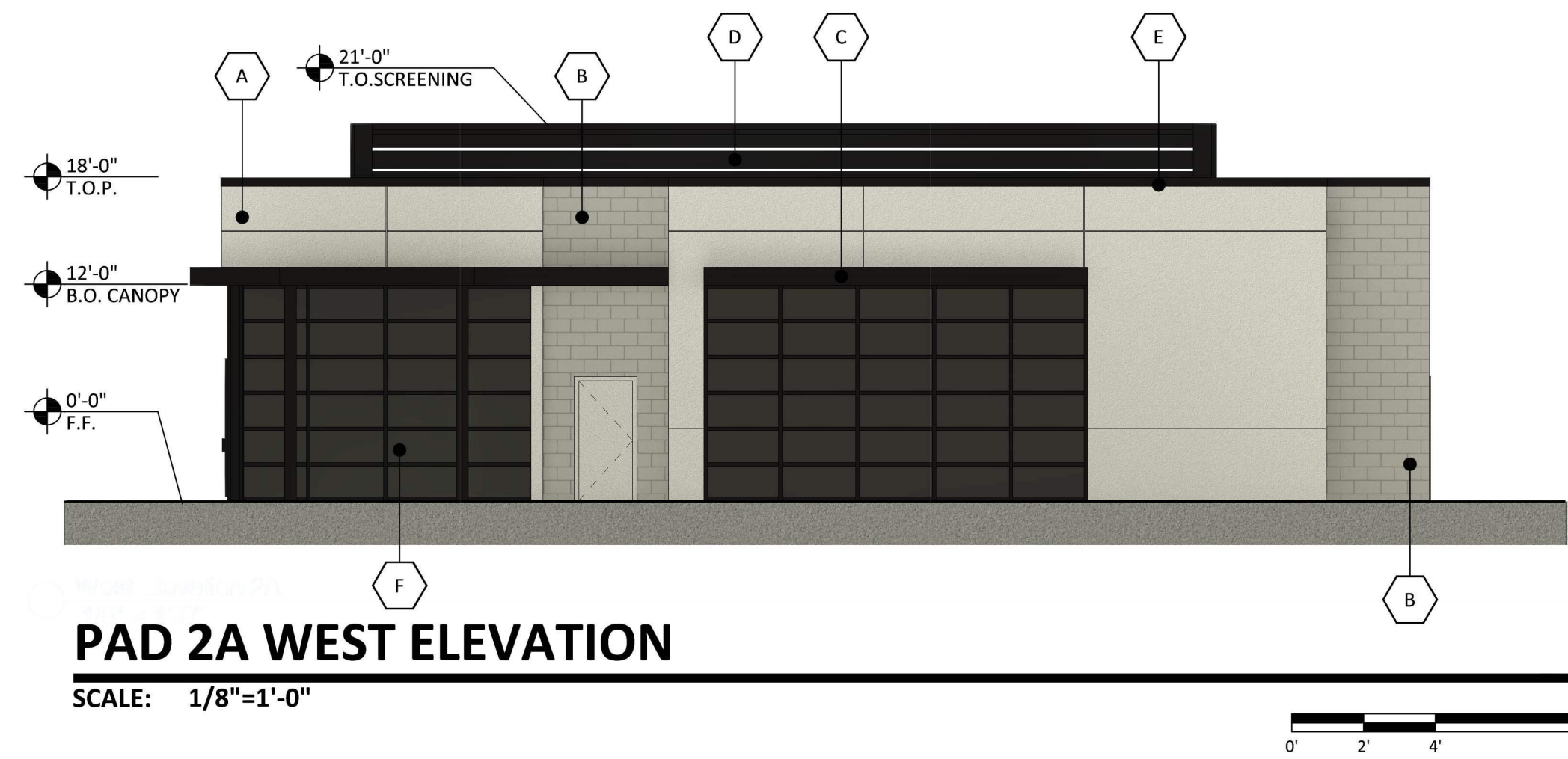
**EL-1**  
**PAD 1A**

RKAA# 20115.00



# MATERIAL AND COLORS

<b>A</b> STUCCO: FINISH: SMOOTH MFG: SHERWIN WILLIAMS COLOR: SW 7626 "ZURICH WHITE"	<b>E</b> METAL COPING: MFG: ATAS COLOR: DARK BRONZE
<b>B</b> CMU: FINISH: PRECISION MFG: SUPERLITE BLOCK COLOR: "HUNTINGTON GRAY-NW GRAY" WITH DARK GRAY RACKED GROUT	<b>F</b> MULLIONS: MFG: KAWNEER COLOR: DARK BRONZE
<b>C</b> METAL CANOPY & AWNING: MFG: ATAS COLOR: DARK BRONZE	<b>G</b> PAINTED H.M. DOORS: MFG: SHERWIN WILLIAMS COLOR: SW 7626 "ZURICH WHITE"
<b>D</b> METAL PANELING: MFG: ATAS COLOR: DARK BRONZE	<b>H</b> METAL SCREENS: COLOR: DARK BRONZE METAL WITH WIRE MESH



**ELLIOT RETAIL**  
3501 S ELLSWORTH RD  
MESA ARIZONA 85212  
DATE: 12-22-2022 (PRELIMINARY)

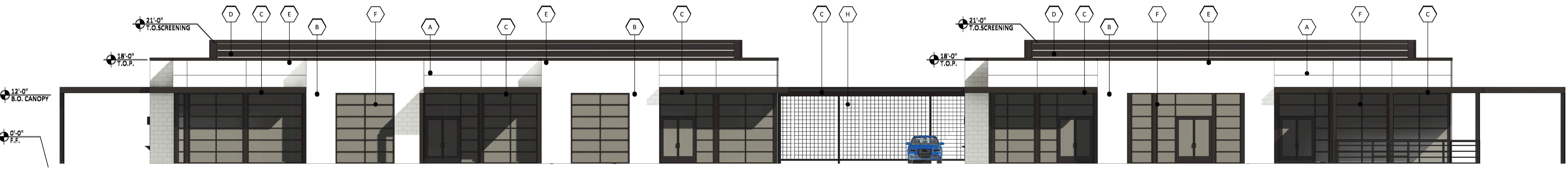


© 2022 R K A A ARCHITECTS, INC. ALL RIGHTS RESERVED. THIS DRAWING IS AN INSTRUMENT OF SERVICE. IT IS THE PROPERTY OF R K A A ARCHITECTS, INC. AND MAY NOT BE DUPLICATED, USED OR DISCLOSED WITHOUT WRITTEN PERMISSION OF THE ARCHITECT.

**EL-2  
PAD 2A**

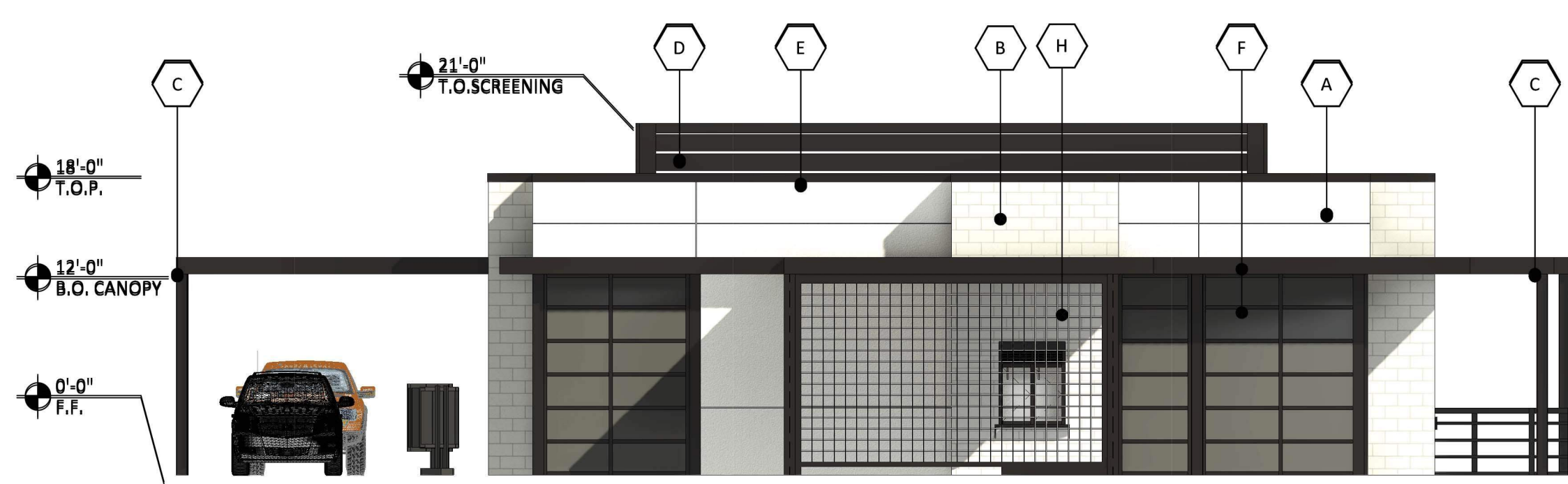
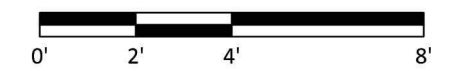
RKAA# 20115.00





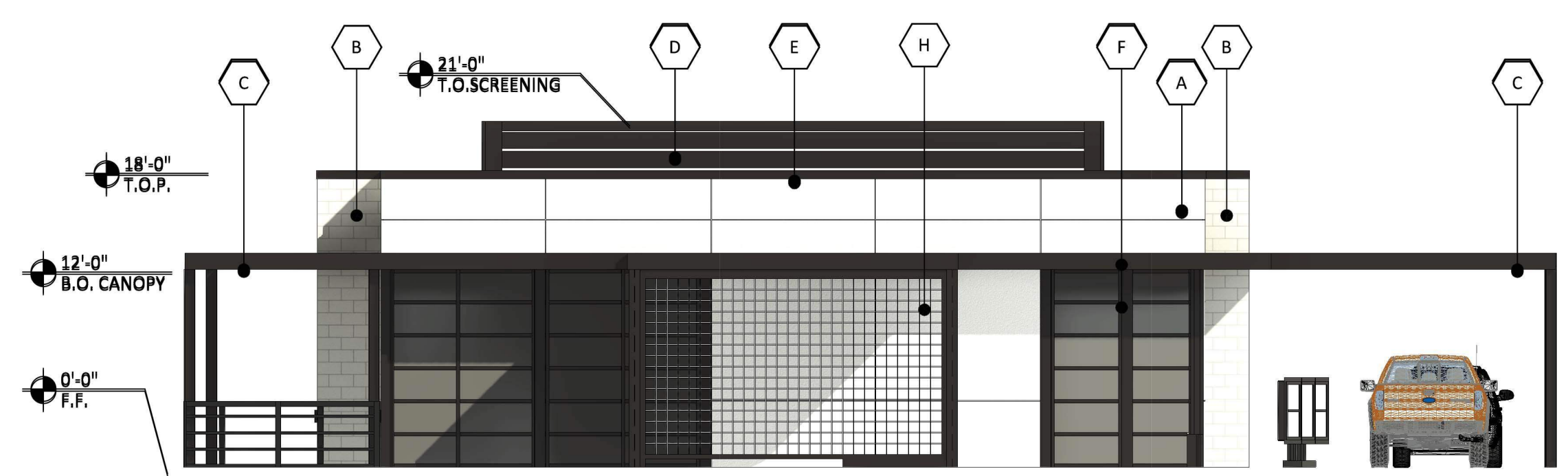
**PAD 2B EAST ELEVATION**

SCALE: 1/8"=1'-0"



**PAD 2B SOUTH-A ELEVATION**

SCALE: 1/8"=1'-0"



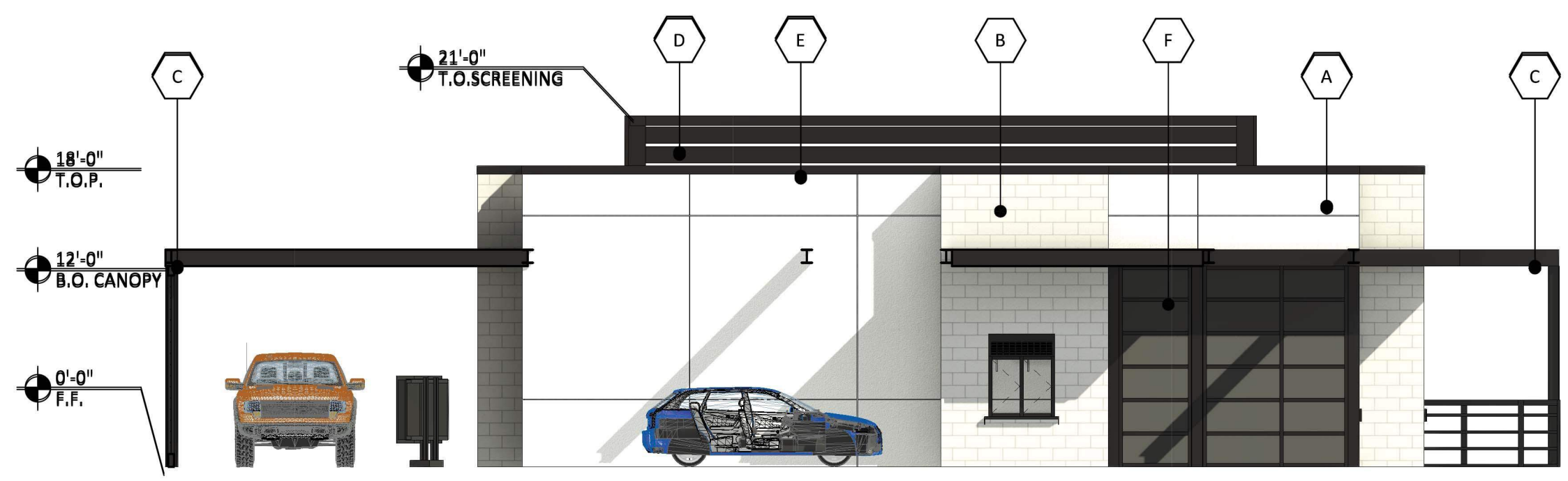
**PAD 2B NORTH-A ELEVATION**

SCALE: 1/8"=1'-0"



**MATERIAL AND COLORS**

<b>A</b> STUCCO: FINISH: SMOOTH MFG: SHERWIN WILLIAMS COLOR: SW 7626 "ZURICH WHITE"	<b>E</b> METAL COPING: MFG: ATAS COLOR: DARK BRONZE
<b>B</b> CMU: FINISH: PRECISION MFG: SUPERLITE BLOCK COLOR: "HUNTINGTON GRAY-NW GRAY" WITH DARK GRAY RACKED GROUT	<b>F</b> MULLIONS: MFG: KAWNEER COLOR: DARK BRONZE
<b>C</b> METAL CANOPY & AWNING: MFG: ATAS COLOR: DARK BRONZE	<b>G</b> PAINTED H.M. DOORS: MFG: SHERWIN WILLIAMS COLOR: SW 7626 "ZURICH WHITE"
<b>D</b> METAL PANELING: MFG: ATAS COLOR: DARK BRONZE	<b>H</b> METAL SCREENS: COLOR: DARK BRONZE METAL WITH WIRE MESH



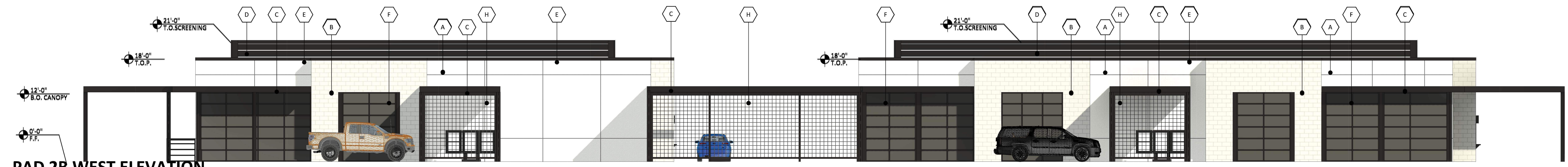
**PAD 2B SOUTH-B ELEVATION**

SCALE: 1/8"=1'-0"



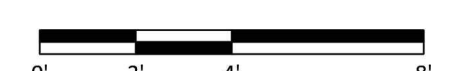
**PAD 2B NORTH-B ELEVATION**

SCALE: 1/8"=1'-0"



**PAD 2B WEST ELEVATION**

SCALE: 1/8"=1'-0"



**ELLIOT RETAIL**  
3501 S ELLSWORTH RD  
MESA ARIZONA 85212  
DATE: 12-22-2022 (PRELIMINARY)



© 2022 R K A A ARCHITECTS, INC. ALL RIGHTS RESERVED. THIS DRAWING IS AN INSTRUMENT OF SERVICE. IT IS THE PROPERTY OF R K A A ARCHITECTS, INC. AND MAY NOT BE DUPLICATED, USED OR DISCLOSED WITHOUT WRITTEN PERMISSION OF THE ARCHITECT.

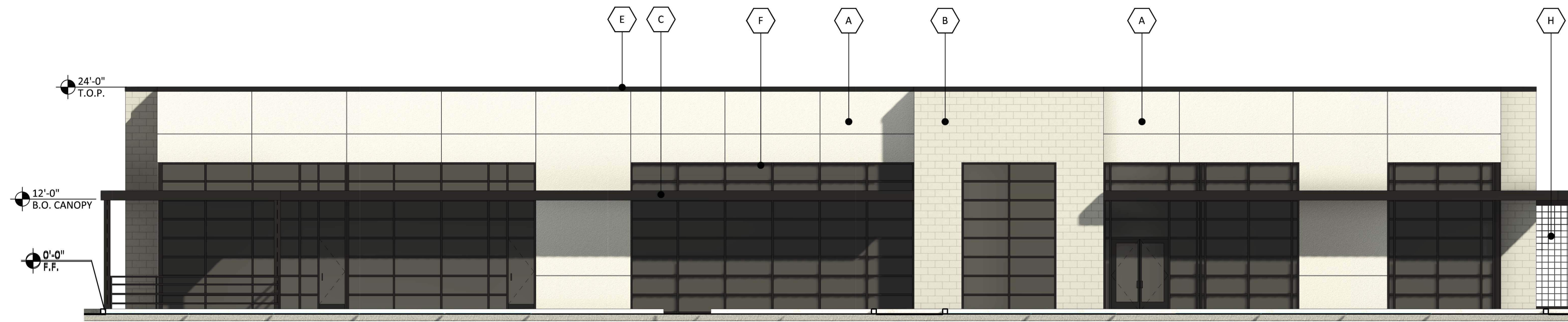
**EL-3**  
**PAD 2B**

RKAA# 20115.00



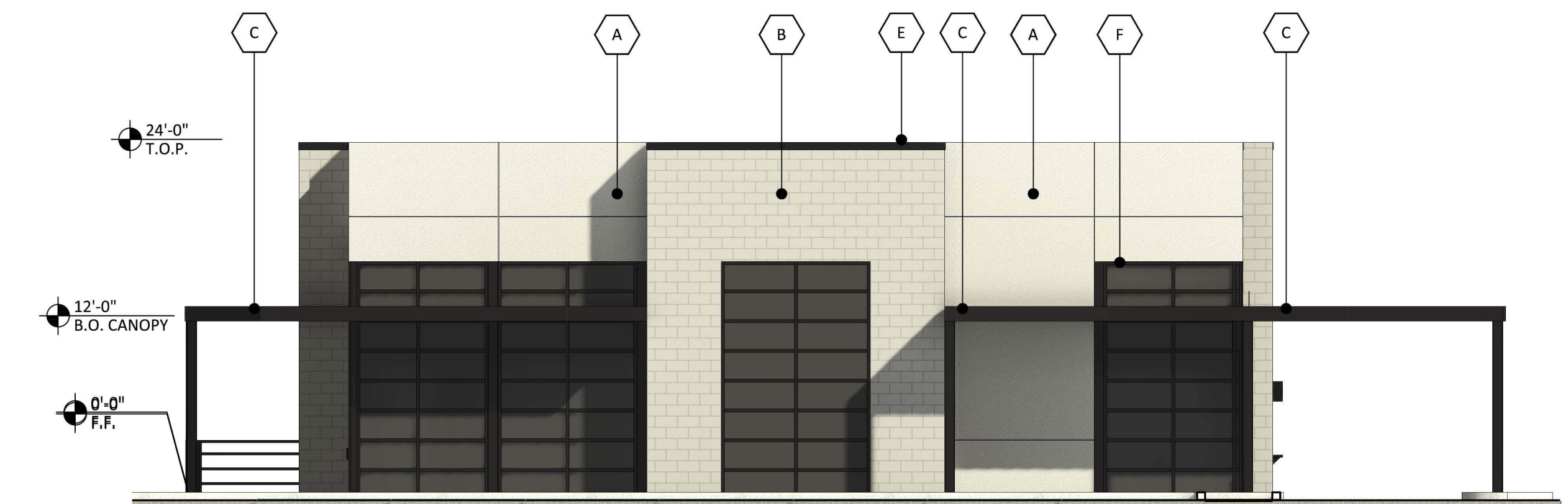
## MATERIAL AND COLORS

<b>A</b> STUCCO: FINISH: SMOOTH MFG: SHERWIN WILLIAMS COLOR: SW 7626 "ZURICH WHITE"	<b>E</b> METAL COPING: MFG: ATAS COLOR: DARK BRONZE
<b>B</b> CMU: FINISH: PRECISION MFG: SUPERLITE BLOCK COLOR: "HUNTINGTON GRAY-NW GRAY" WITH DARK GRAY RACKED GROUT	<b>F</b> MULLIONS: MFG: KAWNEER COLOR: DARK BRONZE
<b>C</b> METAL CANOPY & AWNING: MFG: ATAS COLOR: DARK BRONZE	<b>G</b> PAINTED H.M. DOORS: MFG: SHERWIN WILLIAMS COLOR: SW 7626 "ZURICH WHITE"
<b>D</b> METAL PANELING: MFG: ATAS COLOR: DARK BRONZE	<b>H</b> METAL SCREENS: COLOR: DARK BRONZE METAL WITH WIRE MESH



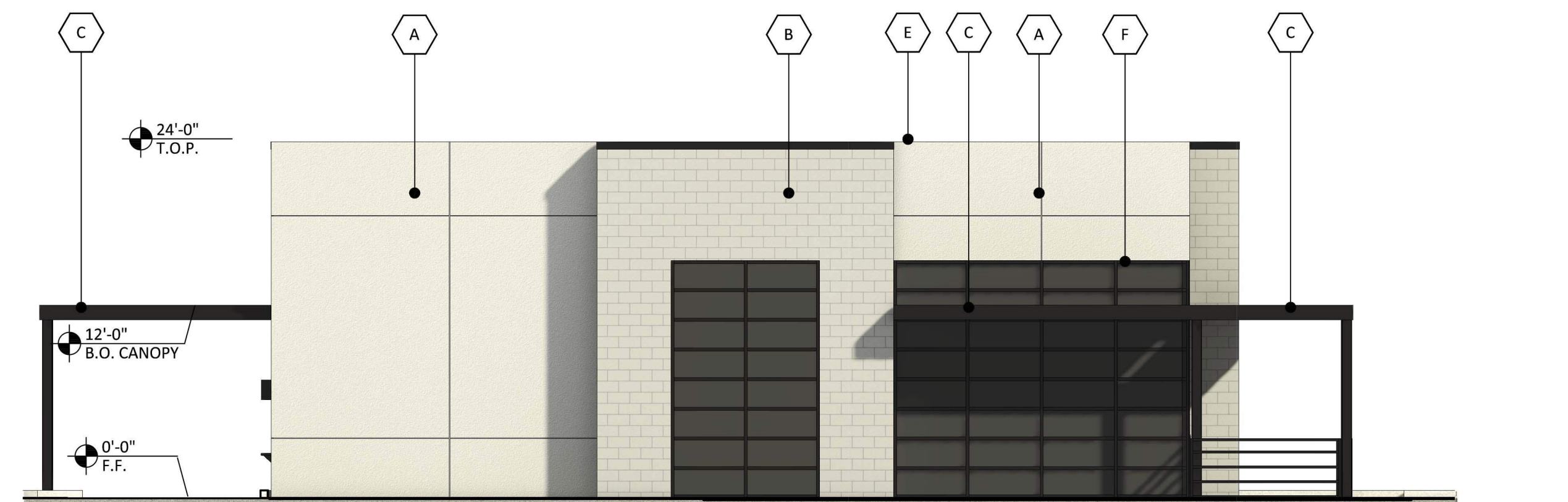
**PAD 3B WEST ELEVATION**

SCALE: 1/8"=1'-0"



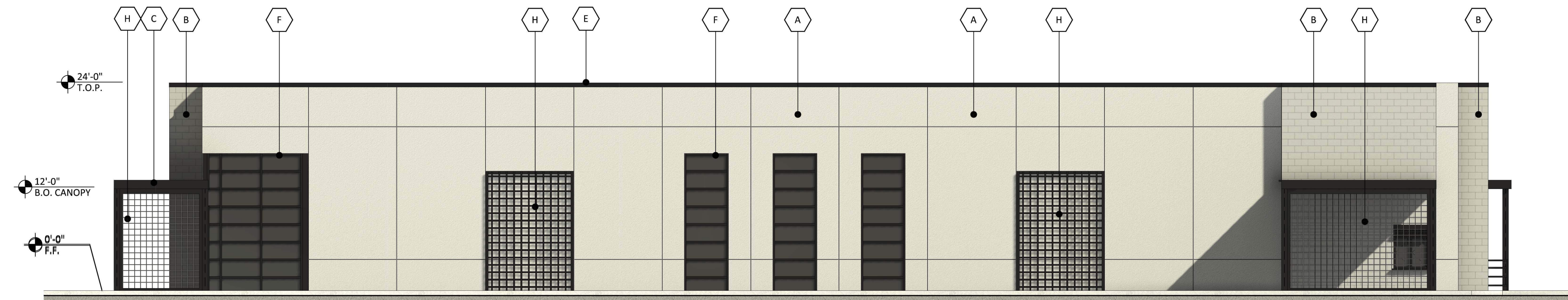
**PAD 3B SOUTH ELEVATION**

SCALE: 1/8"=1'-0"



**PAD 3B NORTH ELEVATION**

SCALE: 1/8"=1'-0"



**PAD 3B EAST ELEVATION**

SCALE: 1/8"=1'-0"



**ELLIOT RETAIL**  
3501 S ELLSWORTH RD  
MESA ARIZONA 85212  
DATE: 12-22-2022 (PRELIMINARY)



© 2022 R K A A  
ARCHITECTS, INC. ALL  
RIGHTS RESERVED.  
THIS DRAWING IS AN  
INSTRUMENT OF  
SERVICE. IT IS THE  
PROPERTY OF R K A A  
ARCHITECTS, INC. AND  
MAY NOT BE  
DUPLICATED, USED OR  
DISCLOSED WITHOUT  
WRITTEN PERMISSION  
OF THE ARCHITECT.

**EL-4**  
**PAD 3B**

RKAA# 20115.00



## MATERIAL AND COLORS

<b>A</b> STUCCO: FINISH: SMOOTH MFG: SHERWIN WILLIAMS COLOR: SW 7626 "ZURICH WHITE"	<b>E</b> METAL COPING: MFG: ATAS COLOR: DARK BRONZE
<b>B</b> CMU: FINISH: PRECISION MFG: SUPERLITE BLOCK COLOR: "HUNTINGTON GRAY-NW GRAY" WITH DARK GRAY RACKED GROUT	<b>F</b> MULLIONS: MFG: KAWNEER COLOR: DARK BRONZE
<b>C</b> METAL CANOPY & AWNING: MFG: ATAS COLOR: DARK BRONZE	<b>G</b> PAINTED H.M. DOORS: MFG: SHERWIN WILLIAMS COLOR: SW 7626 "ZURICH WHITE"
<b>D</b> METAL PANELING: MFG: ATAS COLOR: DARK BRONZE	<b>H</b> METAL SCREENS: COLOR: DARK BRONZE METAL WITH WIRE MESH



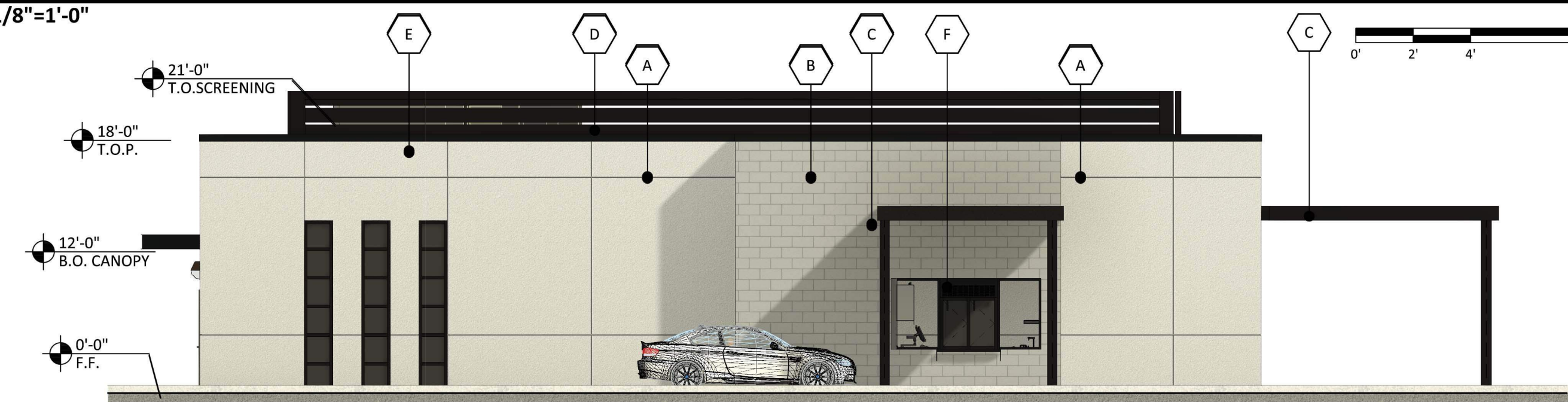
### PAD 4 EAST ELEVATION

SCALE: 1/8"=1'-0"



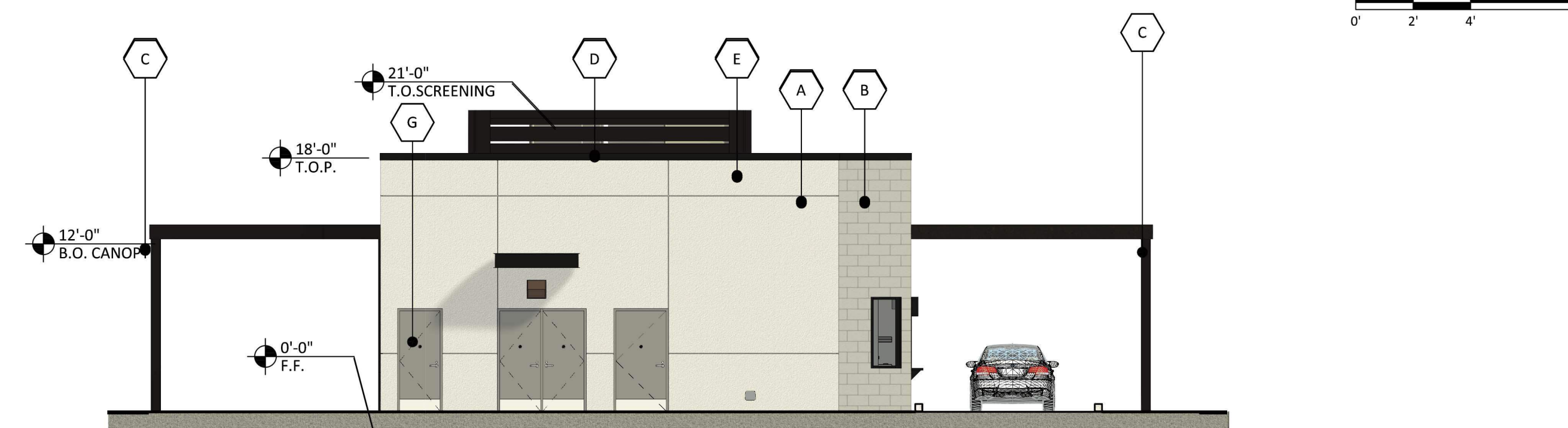
### PAD 4 SOUTH ELEVATION

SCALE: 1/8"=1'-0"



### PAD 4 WEST ELEVATION

SCALE: 1/8"=1'-0"



### PAD 4 NORTH ELEVATION

SCALE: 1/8"=1'-0"

ELLIOT RETAIL  
3501 S ELLSWORTH RD  
MESA ARIZONA 85212  
DATE: 12-22-2022 (PRELIMINARY)



© 2022 R K A A ARCHITECTS, INC. ALL RIGHTS RESERVED. THIS DRAWING IS AN INSTRUMENT OF SERVICE. IT IS THE PROPERTY OF R K A A ARCHITECTS, INC. AND MAY NOT BE DUPLICATED, USED OR DISCLOSED WITHOUT WRITTEN PERMISSION OF THE ARCHITECT.

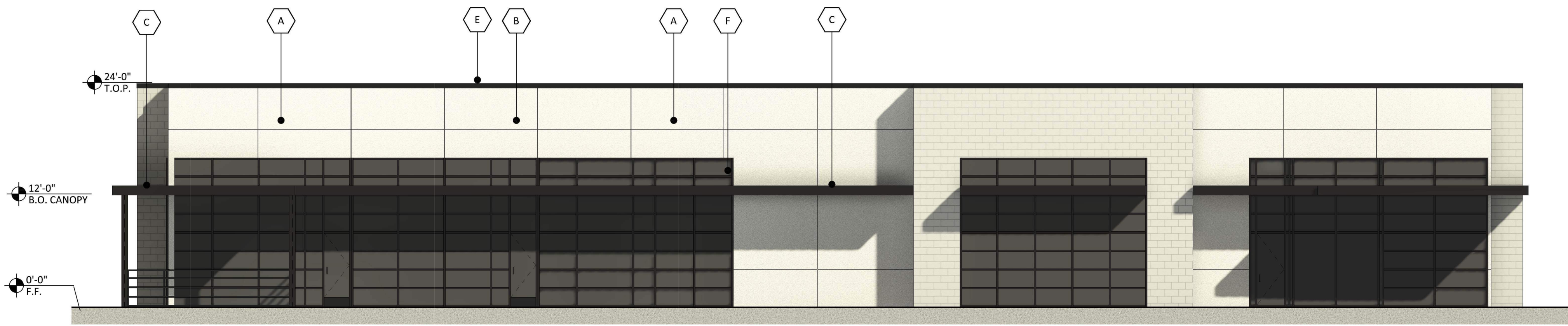
EL-5  
PAD 4

RKAA# 20115.00



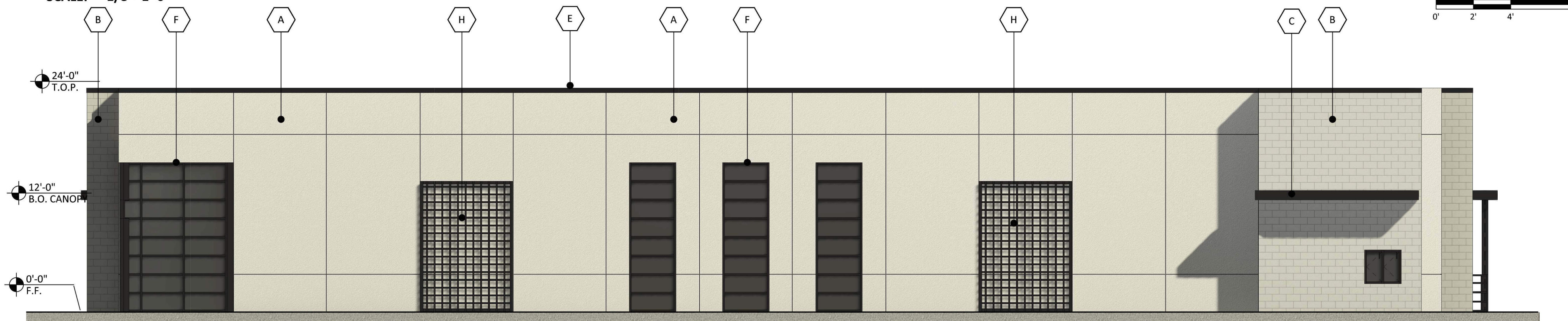
# MATERIAL AND COLORS

- A STUCCO:** SMOOTH  
FINISH: SHERWIN WILLIAMS  
MFG: SW 7626 "ZURICH WHITE"  
COLOR: SW 7626 "ZURICH WHITE"
- B CMU:** PRECISION  
FINISH: SUPERLITE BLOCK  
MFG: "HUNTINGTON GRAY-NW  
COLOR: GRAY" WITH DARK GRAY RACKED GROUT
- C METAL CANOPY & AWNING:**  
MFG: ATAS  
COLOR: DARK BRONZE
- D METAL PANELING:**  
MFG: ATAS  
COLOR: DARK BRONZE
- E METAL COPING:**  
MFG: ATAS  
COLOR: DARK BRONZE
- F MULLIONS:**  
MFG: KAWNEER  
COLOR: DARK BRONZE
- G PAINTED H.M. DOORS:**  
MFG: SHERWIN WILLIAMS  
COLOR: SW 7626 "ZURICH WHITE"
- H METAL SCREENS:**  
COLOR: DARK BRONZE METAL WITH  
WIRE MESH



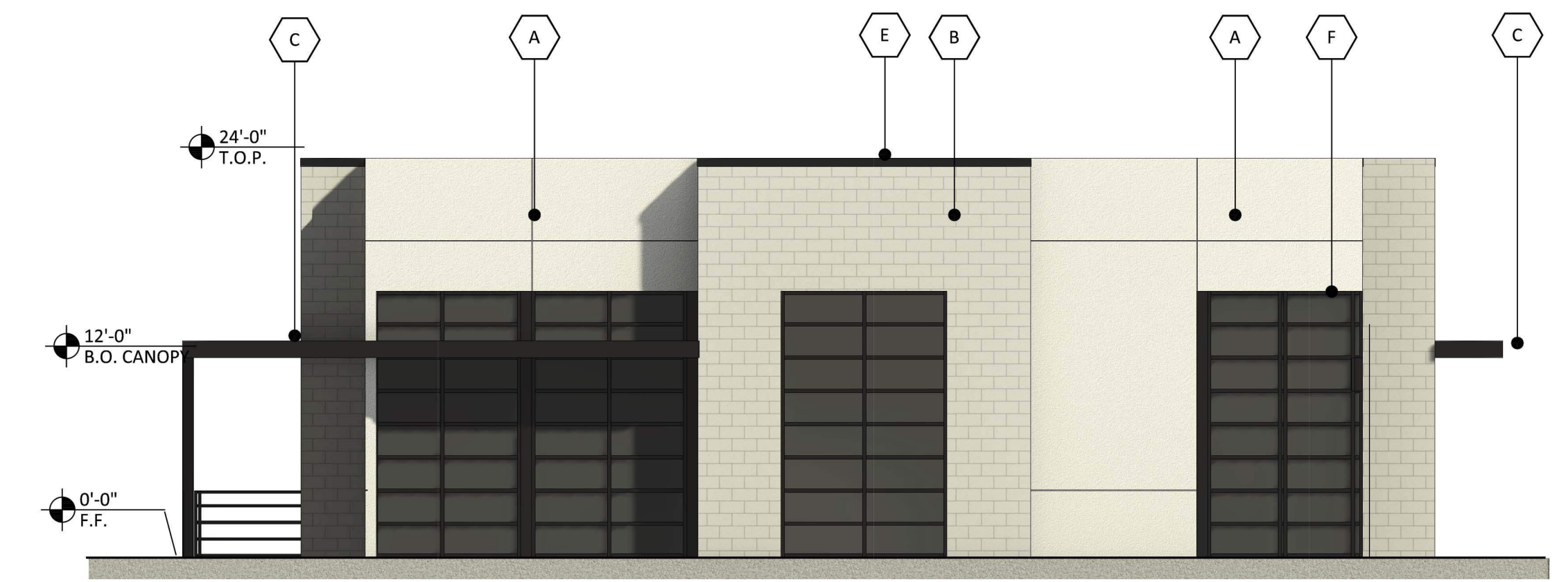
**PAD 5 SOUTH ELEVATION**

SCALE: 1/8"=1'-0"



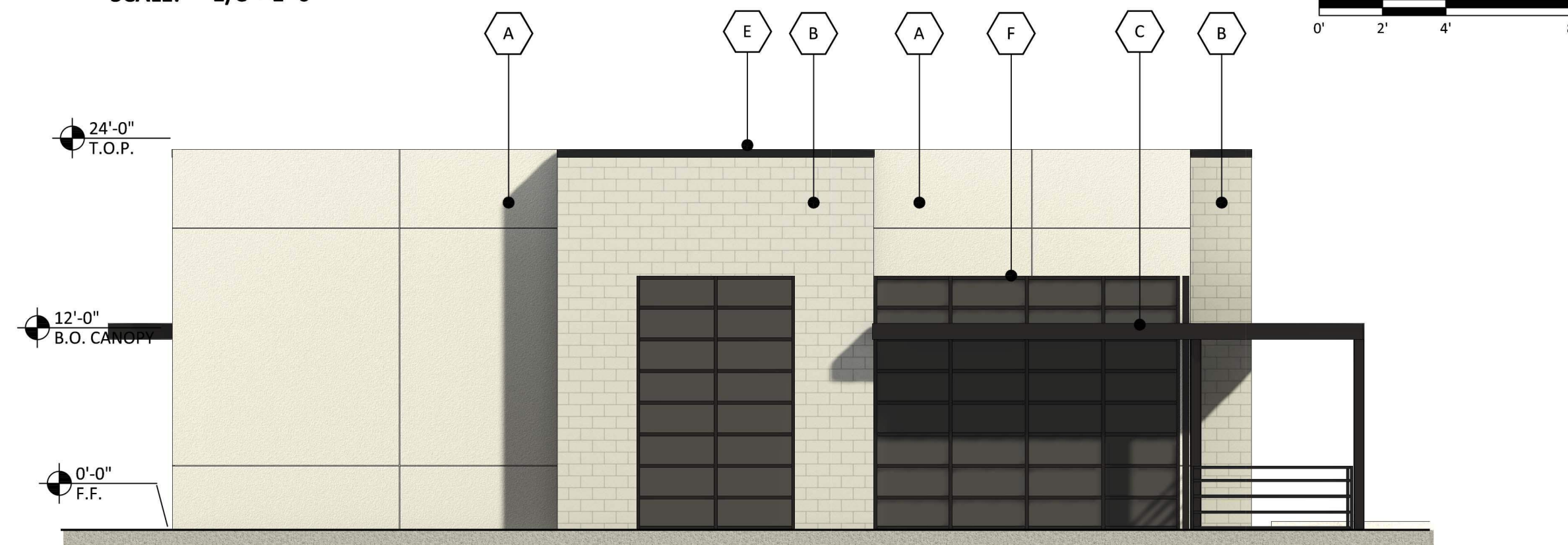
**PAD 5 EAST ELEVATION**

SCALE: 1/8"=1'-0"



**PAD 5 SOUTH ELEVATION**

SCALE: 1/8"=1'-0"



**PAD 5 NORTH ELEVATION**

SCALE: 1/8"=1'-0"

**ELLIOT RETAIL**  
3501 S ELLSWORTH RD  
MESA ARIZONA 85212  
DATE: 12-22-2022 (PRELIMINARY)



© 2022 R K A A  
ARCHITECTS, INC. ALL  
RIGHTS RESERVED.  
THIS DRAWING IS AN  
INSTRUMENT OF  
SERVICE. IT IS THE  
PROPERTY OF R K A A  
ARCHITECTS, INC. AND  
M A Y N O T B E  
DUPLICATED, USED OR  
DISCLOSED WITHOUT  
WRITTEN PERMISSION  
OF THE ARCHITECT.

**EL-6**  
**PAD 5**

RKAA# 20115.00



### MATERIAL AND COLORS

- A STUCCO:** FINISH: SMOOTH  
MFG: SHERWIN WILLIAMS  
COLOR: SW 7626 "ZURICH WHITE"
- B CMU:** FINISH: PRECISION  
MFG: SUPERLITE BLOCK  
COLOR: "HUNTINGTON GRAY-NW  
GRAY" WITH DARK GRAY RACKED GROUT
- C METAL CANOPY & AWNING:** MFG: ATAS  
COLOR: DARK BRONZE
- D METAL PANELING:** MFG: ATAS  
COLOR: DARK BRONZE
- E METAL COPING:** MFG: ATAS  
COLOR: DARK BRONZE
- F MULLIONS:** MFG: KAWNEER  
COLOR: DARK BRONZE
- G PAINTED H.M. DOORS:** MFG: SHERWIN WILLIAMS  
COLOR: SW 7626 "ZURICH WHITE"
- H METAL SCREENS:** COLOR: DARK BRONZE METAL WITH WIRE MESH



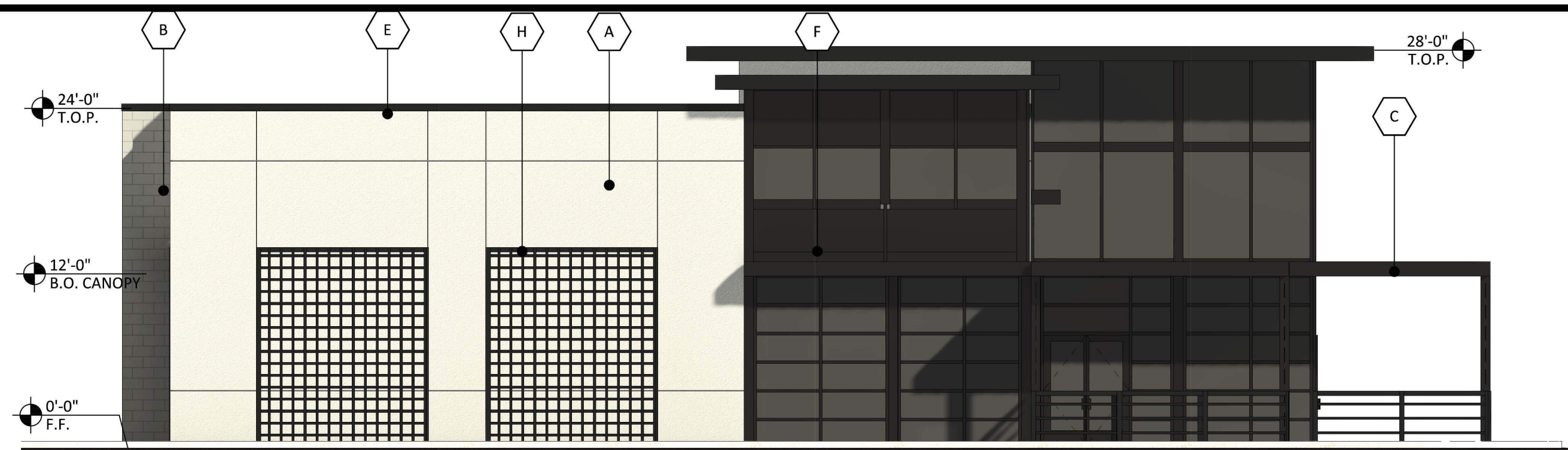
**PAD 6 EAST ELEVATION**

SCALE: 1/8"=1'-0"



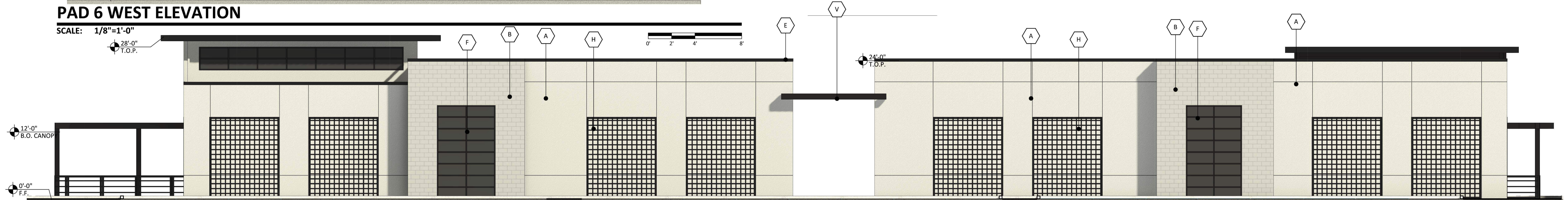
**PAD 6 SOUTH ELEVATION**

SCALE: 1/8"=1'-0"



**PAD 6 WEST ELEVATION**

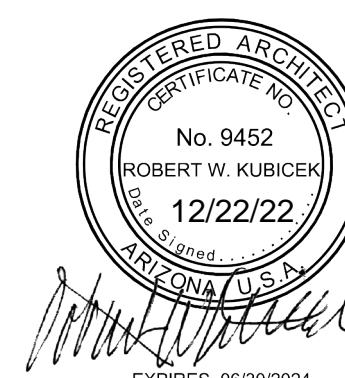
SCALE: 1/8"=1'-0"



**PAD 6 NORTH ELEVATION**

SCALE: 1/8"=1'-0"

**ELLIOT RETAIL**  
3501 S ELLSWORTH RD  
MESA ARIZONA 85212  
DATE: 12-22-2022 (PRELIMINARY)

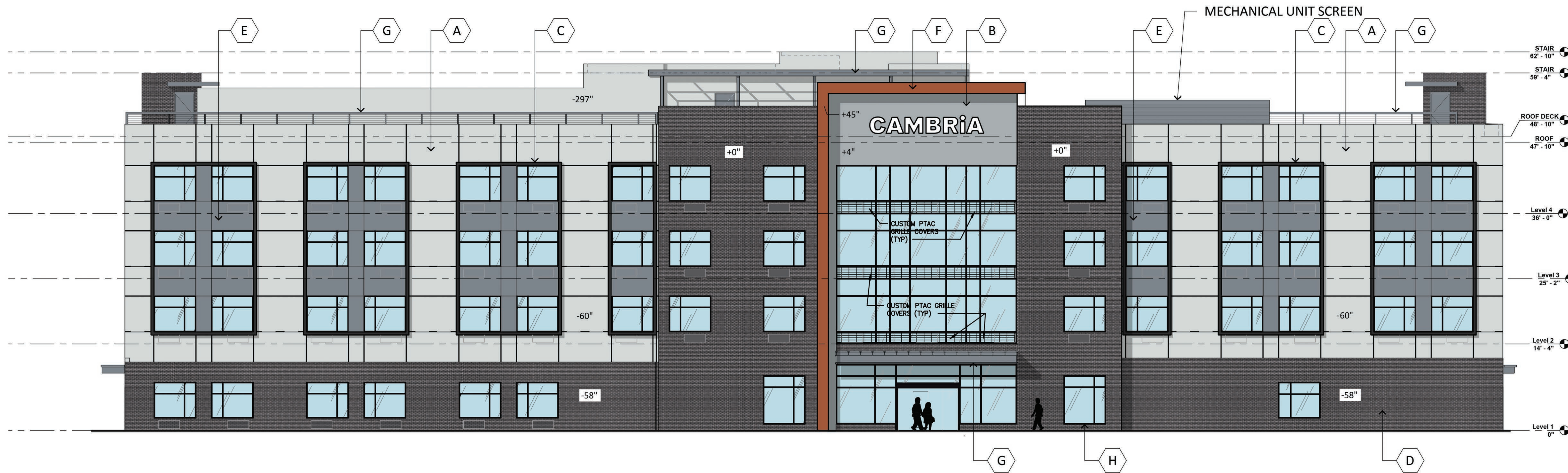


© 2022 R K A A ARCHITECTS, INC. ALL RIGHTS RESERVED. THIS DRAWING IS AN INSTRUMENT OF SERVICE. IT IS THE PROPERTY OF R K A A ARCHITECTS, INC. AND MAY NOT BE DUPLICATED, USED OR DISCLOSED WITHOUT WRITTEN PERMISSION OF THE ARCHITECT.

**EL-7**  
**PAD 6**

RKAA# 20115.00





**1 NORTH ELEVATION**  
SCALE: 1/8" = 1'-0"



**1 EAST ELEVATION**  
SCALE: 1/8" = 1'-0"

**MATERIAL AND COLORS**

<b>A</b> EIFS: FINISH: LOTUSAN MFG: SHERWIN WILLIAMS COLOR: SW 6253 "OLYMPUS WHITE"	<b>F</b> METAL PANEL: MATCH: SHERWIN WILLIAMS MFG: SW 6349 "PENNYWISE" COLOR: SW 6349 "PENNYWISE"
<b>B</b> EIFS: FINISH: LOTUSAN MFG: SHERWIN WILLIAMS COLOR: SW 6255 "MORNING FOG"	<b>G</b> PAINTED METAL / H.M. DOORS: MFG: DUNN EDWARDS COLOR: SW 6256 "SERIOUS GRAY"
<b>C</b> EIFS: FINISH: LOTUSAN MFG: SHERWIN WILLIAMS COLOR: SW 6990 "CAVIAR"	<b>K</b> MULLIONS: MFG: KAWNEER COLOR: BLACK
<b>D</b> ADHERED BRICK VENEER: MFG: BELDEN BRICK COLOR: "BLACK DIAMOND VELOUR"	NOTE: PARAPET CAPS NOT SHOWN FOR CLARITY PURPOSES - PAINT TO MATCH WALL BELOW
<b>E</b> METAL PANEL: MATCH: SHERWIN WILLIAMS MFG: SW 6256 "SERIOUS GRAY" COLOR: SW 6256 "SERIOUS GRAY"	





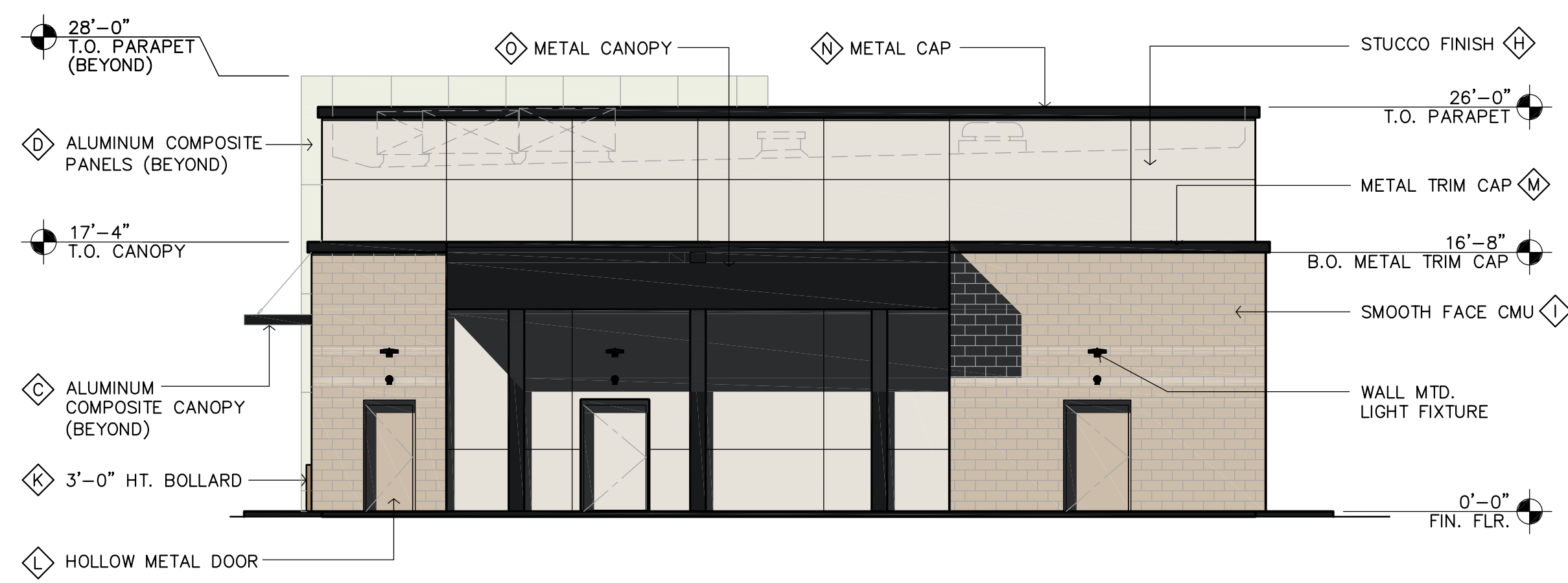
**1 SOUTH ELEVATION**  
SCALE: 1/8" = 1'-0"



**1 WEST ELEVATION**  
SCALE: 1/8" = 1'-0"

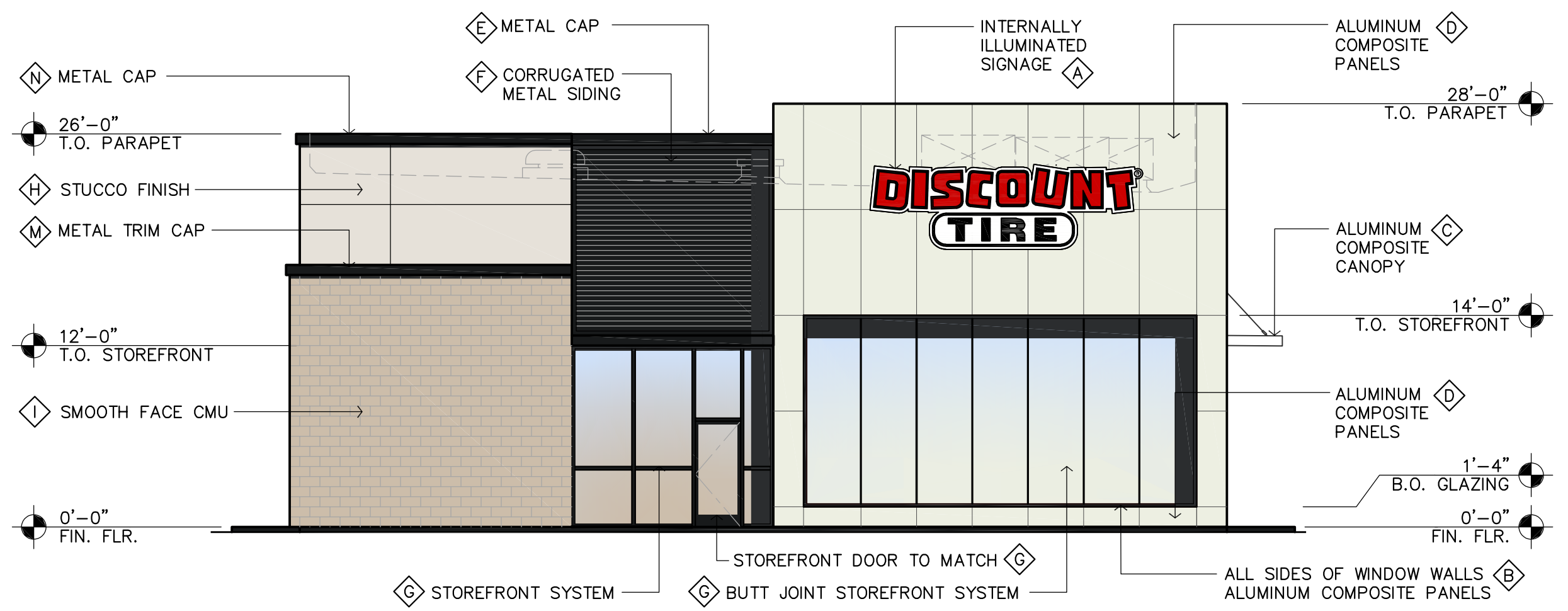
**MATERIAL AND COLORS**

<b>A</b> EIFS: FINISH: LOTUSAN MFG: SHERWIN WILLIAMS COLOR: SW 6253 "OLYMPUS WHITE"	<b>F</b> METAL PANEL: MATCH: MFG: SHERWIN WILLIAMS COLOR: SW 6349 "PENNYWISE"
<b>B</b> EIFS: FINISH: LOTUSAN MFG: SHERWIN WILLIAMS COLOR: SW 6255 "MORNING FOG"	<b>G</b> PAINTED METAL / H.M. DOORS: MFG: DUNN EDWARDS COLOR: SW 6256 "SERIOUS GRAY"
<b>C</b> EIFS: FINISH: LOTUSAN MFG: SHERWIN WILLIAMS COLOR: SW 6990 "CAVIAR"	<b>K</b> MULLIONS: MFG: KAWNEER COLOR: BLACK
<b>D</b> ADHERED BRICK VENEER: MFG: BELDEN BRICK COLOR: "BLACK DIAMOND VELOUR"	NOTE: PARAPET CAPS NOT SHOWN FOR CLARITY PURPOSES - PAINT TO MATCH WALL BELOW
<b>E</b> METAL PANEL: MATCH: MFG: SHERWIN WILLIAMS COLOR: SW 6256 "SERIOUS GRAY"	



**EAST ELEVATION**

SCALE: 1/8" = 1'-0"

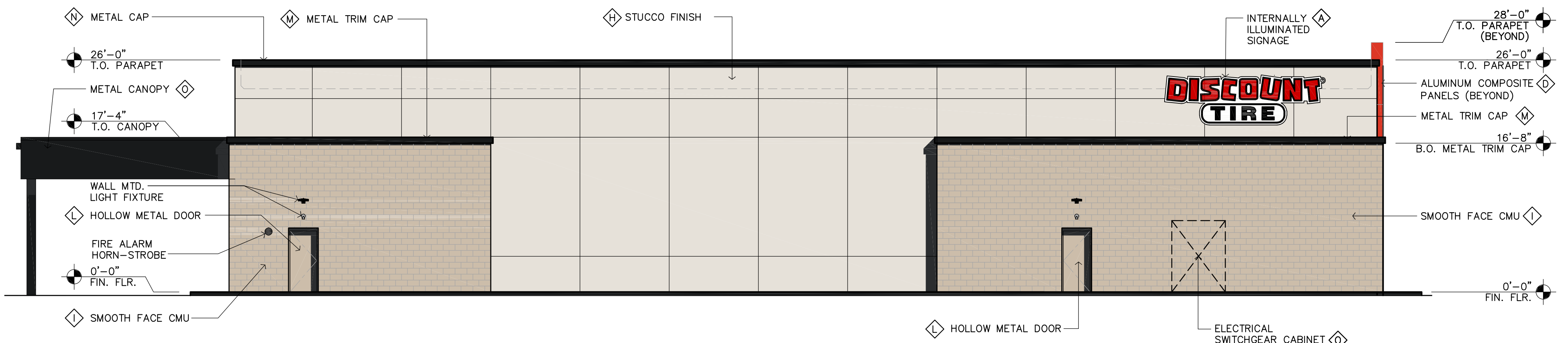


**WEST ELEVATION**

SCALE: 1/8" = 1'-0"

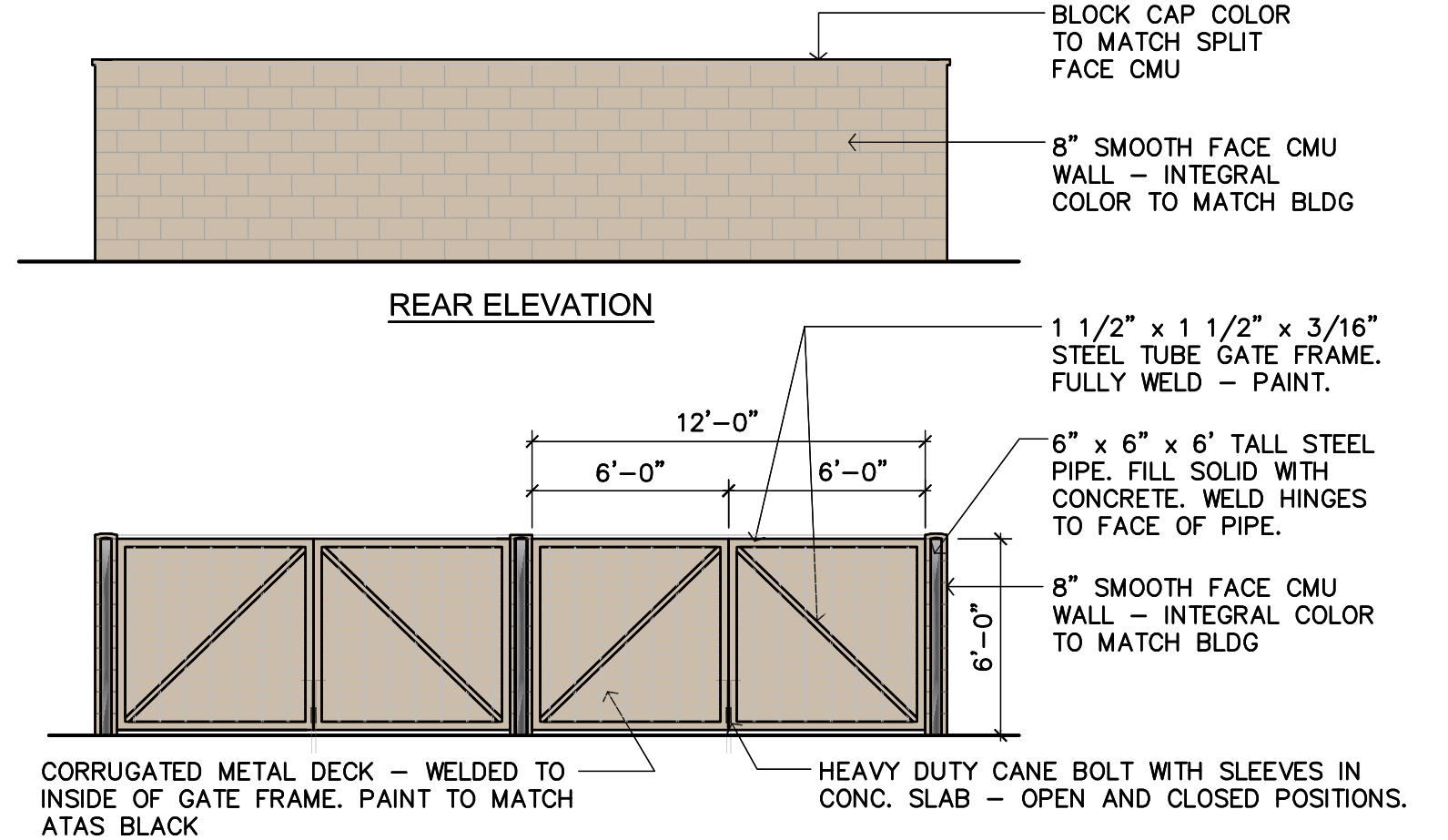
**FINISH LEGEND**

- Ⓐ 3-DIMENSIONAL INTERNALLY ILLUMINATED SIGNAGE (UNDER SEPARATE PERMIT)
- Ⓑ ALUMINUM COMPOSITE PANELS: ALUCOBOND "MATTE PATRIOT RED"
- Ⓒ ALUMINUM CLADDED CANOPY: ALUCOBOND COLOR TO MATCH "ATAS BLACK"
- Ⓓ ALUMINUM COMPOSITE PANELS: ALUCOBOND "MATTE BONE WHITE"
- Ⓔ 8" METAL CAP BY ATAS INTERNATIONAL INC. COATED: "BLACK"
- Ⓕ CORRUGATED METAL PANEL BY ATAS INTERNATIONAL INC. COATED: "BLACK"
- Ⓖ ANODIZED ALUMINUM STOREFRONT SYSTEM - BLACK
- Ⓗ STUCCO FINISH - SW 7626 "ZURICH WHITE"
- Ⓘ PRECISION INTEGRAL COLOR SMOOTH FACE CMU - "HUNTINGTON GRAY - MW GRAY"
- Ⓝ CLADDED STEEL BEAMS: POWDER COAT COLOR TO MATCH ATAS "BLACK"
- Ⓞ STEEL BOLLARDS - POWDER COAT COLOR TO MATCH INTEGRAL COLOR CMU "HUNTINGTON GRAY - MW GRAY"
- Ⓟ HOLLOW METAL DOORS - PAINTED TO MATCH INTEGRAL COLOR CMU "HUNTINGTON GRAY - MW GRAY"
- Ⓜ METAL TRIM CAP - 8" LINK & LOCK BY LONGBOARD COLOR TO MATCH ATAS BLACK
- Ⓝ METAL CAP - COLOR TO MATCH ATAS BLACK
- Ⓞ METAL CANOPY - COLOR TO MATCH ATAS BLACK



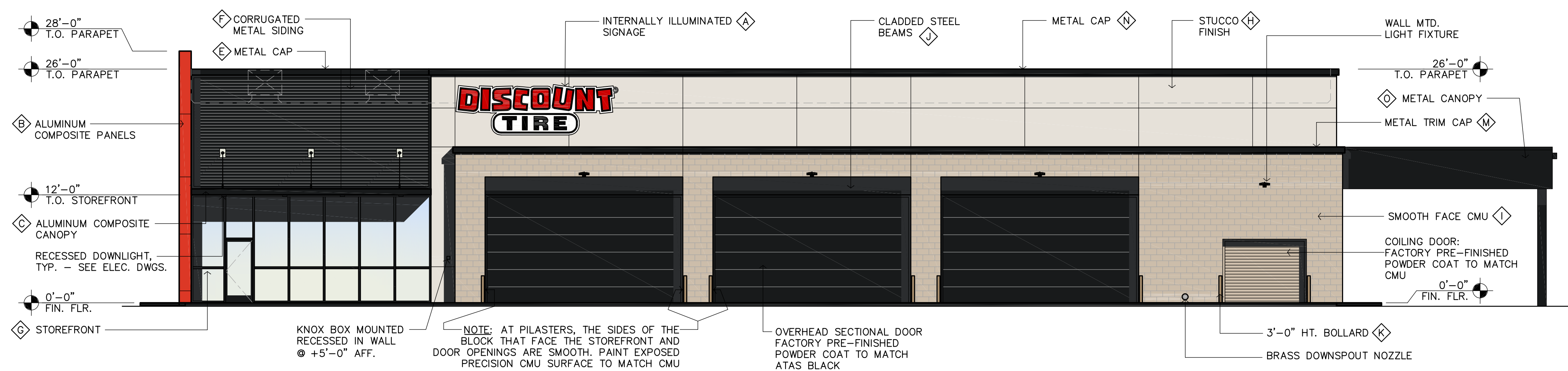
**NORTH ELEVATION**

SCALE: 1/8" = 1'-0"



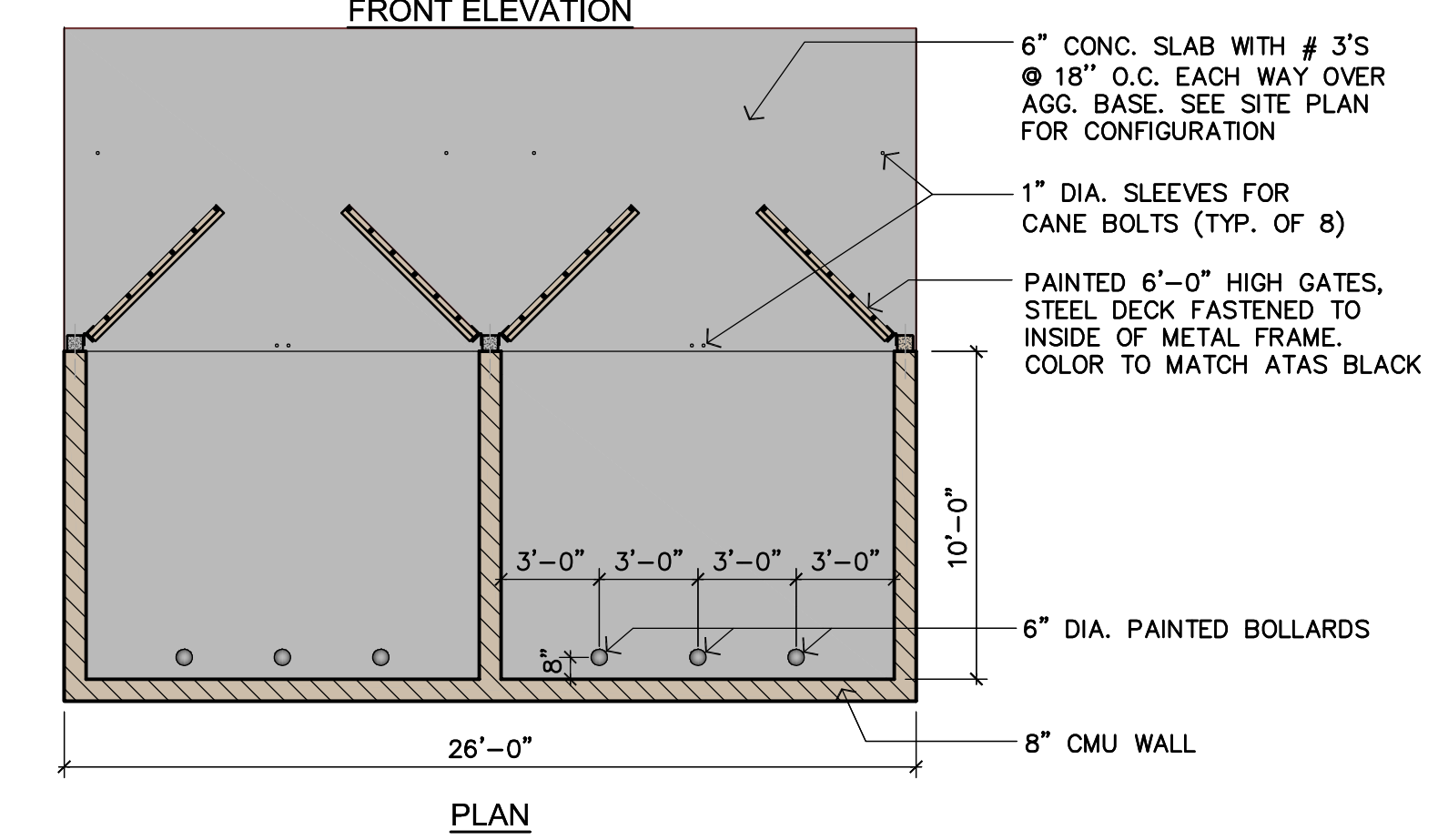
**REAR ELEVATION**

**FRONT ELEVATION**



**SOUTH ELEVATION**

SCALE: 1/8" = 1'-0"



**TRASH ENCLOSURE PLAN / ELEVATIONS**

SCALE: 3/16" = 1'-0"

**REV: 1**  
**DATE: 12.08.22**  
**JOB # AZP 12619**

**ALT - 1L**



THESE DRAWINGS ARE THE CONFIDENTIAL AND PROPRIETARY PROPERTY OF DISCOUNT TIRE AND SHALL NOT BE COPIED OR REPRODUCED WITHOUT WRITTEN AUTHORIZATION. USE OF THESE DRAWINGS FOR REFERENCE OR EXAMPLE ON ANOTHER PROJECT REQUIRES THE PERMISSION OF THE LICENSED ARCHITECTS AND ENGINEERS. REPRODUCTION OF THESE DOCUMENTS FOR REUSE ON ANOTHER PROJECT IS NOT AUTHORIZED.

**CONCEPTUAL COLOR ELEVATIONS**

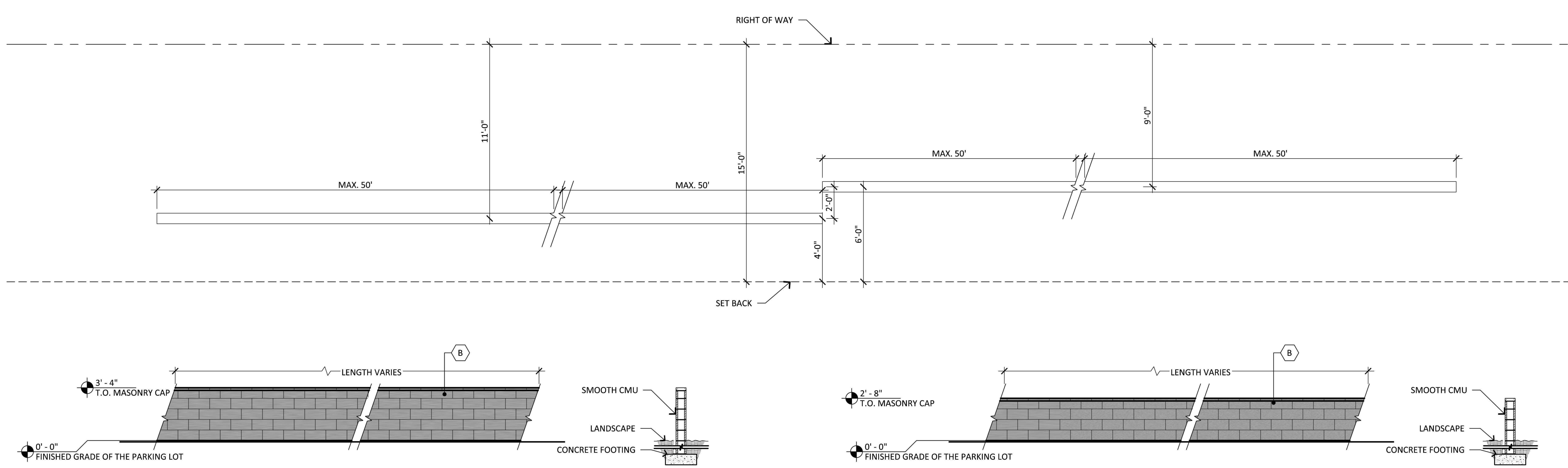
**MESA, AZ**



300 W. Clarendon Avenue  
 Suite 320  
 Phoenix, AZ 85013  
 O: 602.234.1868  
 F: 602.234.1413

**Sheet No.**

**A.3**

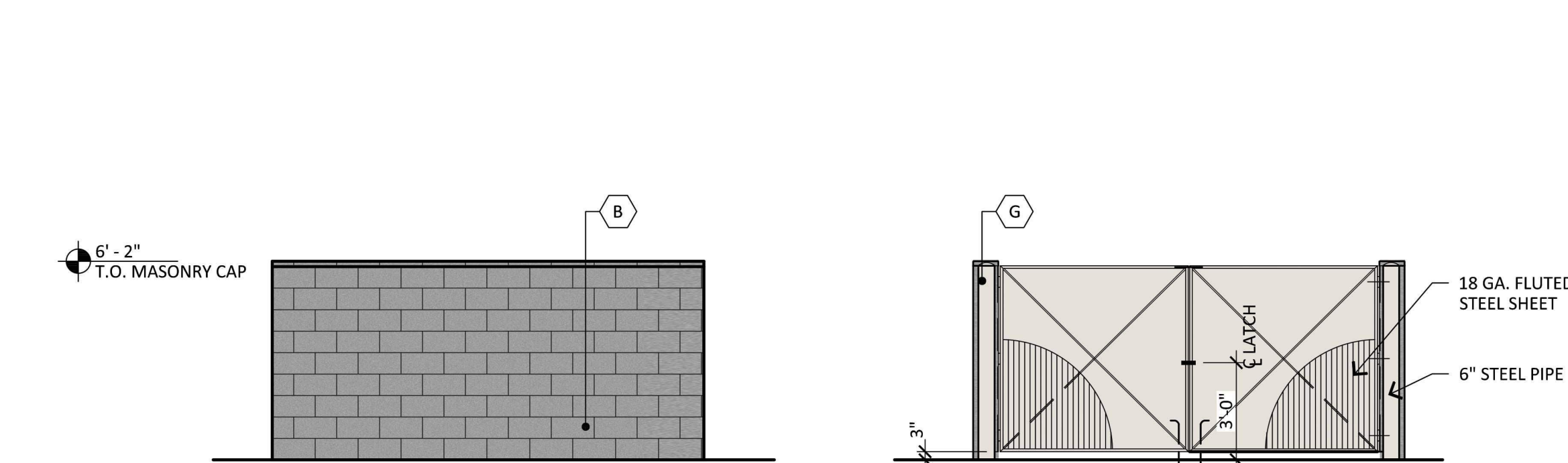


### MATERIAL AND COLORS

- A STUCCO:** SMOOTH  
FINISH: SHERWIN WILLIAMS  
COLOR: SW 7626 "ZURICH WHITE"
- B CMU:** PRECISION  
FINISH: SUPERLITE BLOCK  
MFG: "HUNTINGTON GRAY-NW  
COLOR: GRAY" WITH DARK GRAY RACKED GROUT
- C METAL CANOPY & AWNING:**  
MFG: ATAS  
COLOR: DARK BRONZE
- D METAL PANELING:**  
MFG: ATAS  
COLOR: DARK BRONZE
- E METAL COPING:**  
MFG: ATAS  
COLOR: DARK BRONZE
- F MULLIONS:**  
MFG: KAWNEER  
COLOR: DARK BRONZE
- G PAINTED H.M. DOORS:**  
MFG: SHERWIN WILLIAMS  
COLOR: SW 7626 "ZURICH WHITE"
- H METAL SCREENS:**  
COLOR: DARK BRONZE METAL WITH WIRE MESH

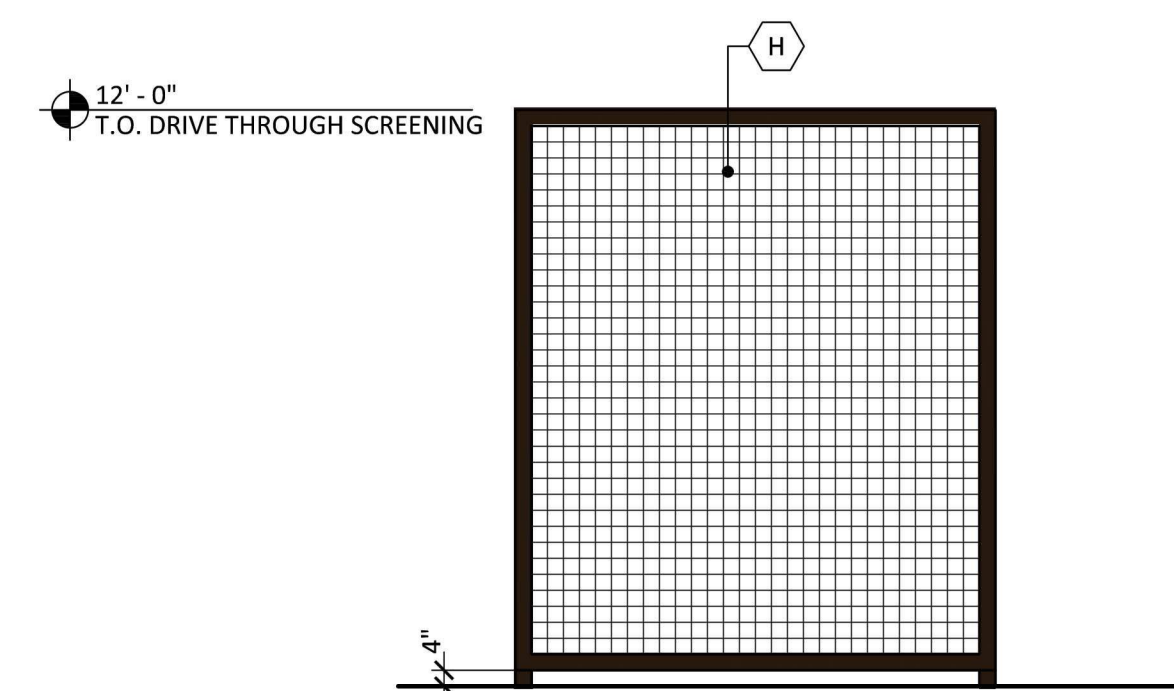
### 1 TYPICAL PARKING SCREEN WALL

SCALE: 1/4"=1'-0"



### 2 TYPICAL TRASH ENCLOSURE

SCALE: 1/4"=1'-0"



### 3 TYPICAL DRIVE THROUGH SCREENING

SCALE: 1/4"=1'-0"



ELLIOT RETAIL  
3501 S ELLSWORTH RD  
MESA ARIZONA 85212  
DATE: 12-22-2022 (PRELIMINARY)

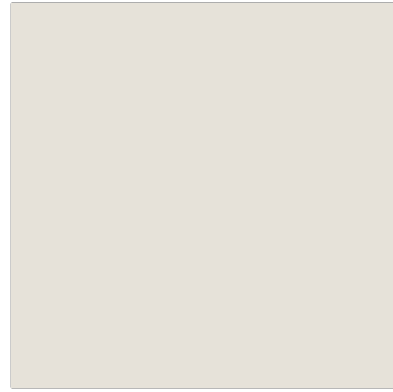


© 2022 R K A A ARCHITECTS, INC. ALL RIGHTS RESERVED. THIS DRAWING IS AN INSTRUMENT OF SERVICE. IT IS THE PROPERTY OF R K A A ARCHITECTS, INC. AND MAY NOT BE DUPLICATED, USED OR DISCLOSED WITHOUT WRITTEN PERMISSION OF THE ARCHITECT.

SD-1  
SITE DETAILS

RKAA# 20115.00





**A** **STUCCO:**  
 FINISH: SMOOTH  
 MFG: SHERWIN WILLIAMS  
 COLOR: SW7626 "ZURICH WHITE"



**B** **CMU:**  
 FINISH: PRECISION  
 MFG: SUPERLITE BLOCK  
 COLOR: "HUNTINGTON GRAY-NW GRAY" WITH DARK GRAY RACKED GROUT



**C** **METAL CANOPY & AWNING:**  
 FINISH: ATAS  
 COLOR: DARK BRONZE



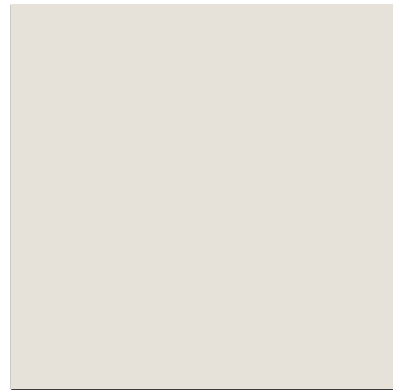
**D** **METAL PANELING:**  
 FINISH: ATAS  
 COLOR: DARK BRONZE



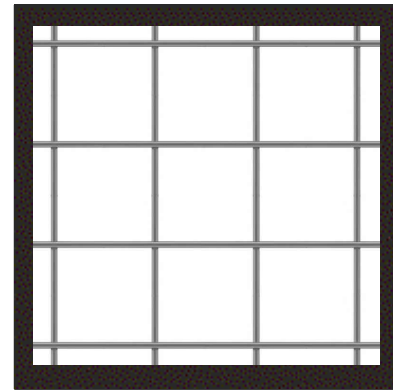
**E** **METAL COPING:**  
 FINISH: ATAS  
 COLOR: DARK BRONZE



**F** **MULLIONS:**  
 FINISH: KAWNEER  
 COLOR: DARK BRONZE



**G** **PAINTED H.M. DOORS:**  
 MFG: SHERWIN WILLIAMS  
 FINISH: SW7626 "ZURICH WHITE"



**H** **METAL SCREENS:**  
 COLOR: DARK BRONZE METAL WITH WIRE MESH

**EX. LANDSCAPING PLANT PALETTE:**  
 PLEASE REFER TO LANDSCAPE DRAWINGS FOR FULL LIST OF PLANTING



**DESERT MILKWEED**



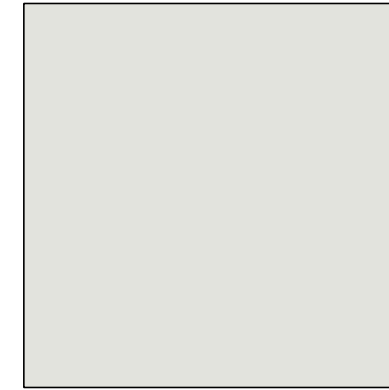
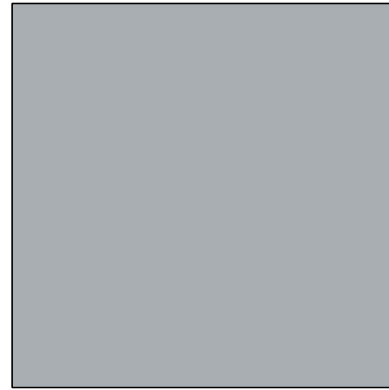
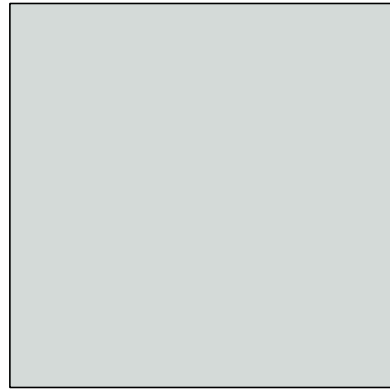
**BREAKLIGHTS RED YUCCA**



**SMOOTH AGAVE**



**LADY'S SLIPPER**



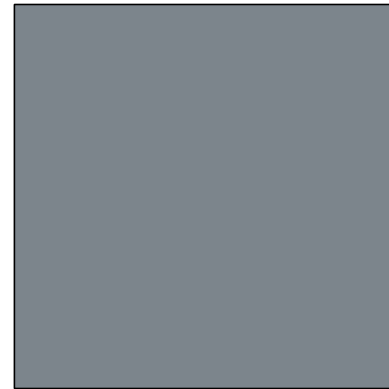
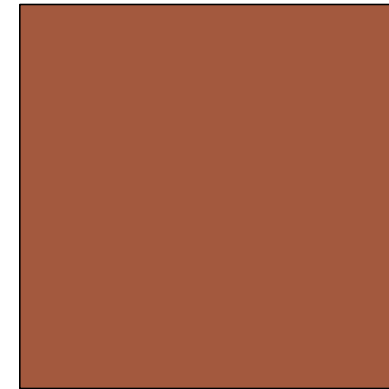
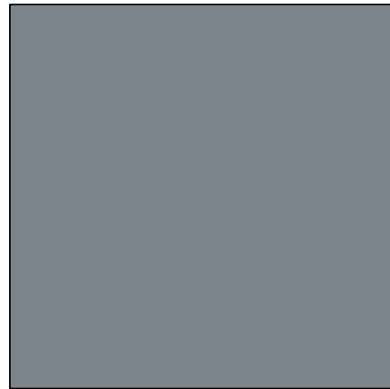
**A EIFS:**  
 FINISH: LOTUSAN  
 MFG: SHERWIN WILLIAMS  
 COLOR: SW 6253 "OLYMPUS WHITE"

**B EIFS:**  
 FINISH: LOTUSAN  
 MFG: SHERWIN WILLIAMS  
 COLOR: SW 6255 "MORNING FOG"

**C EIFS:**  
 FINISH: LOTUSAN  
 MFG: SHERWIN WILLIAMS  
 COLOR: SW 6990 "CAVIAR"

**D ADHERED BRICK VENEER:**  
 MFG: BELDEN BRICK  
 COLOR: "BLACK DIAMOND VELOUR"

**L METAL PANEL:**  
 MFG: ALUCOBOND  
 COLOR: BONE WHITE



**E METAL PANEL:**  
 MATCH:  
 MFG: SHERWIN WILLIAMS  
 COLOR: SW 6256 "SERIOUS GRAY"

**F METAL PANEL:**  
 MATCH:  
 MFG: SHERWIN WILLIAMS  
 COLOR: SW 6349 "PENNYWISE"

**G PAINTED METAL / H.M. DOORS:**  
 MFG: SHERWIN WILLIAMS  
 COLOR: SW 6256 "SERIOUS GRAY"

**K MULLIONS:**  
 MFG: KAWNEER  
 COLOR: BLACK

**M METAL PANEL:**  
 MFG: ATAS INTERNATIONAL  
 COLOR: BLACK  
 SPEC: CORRUGATED