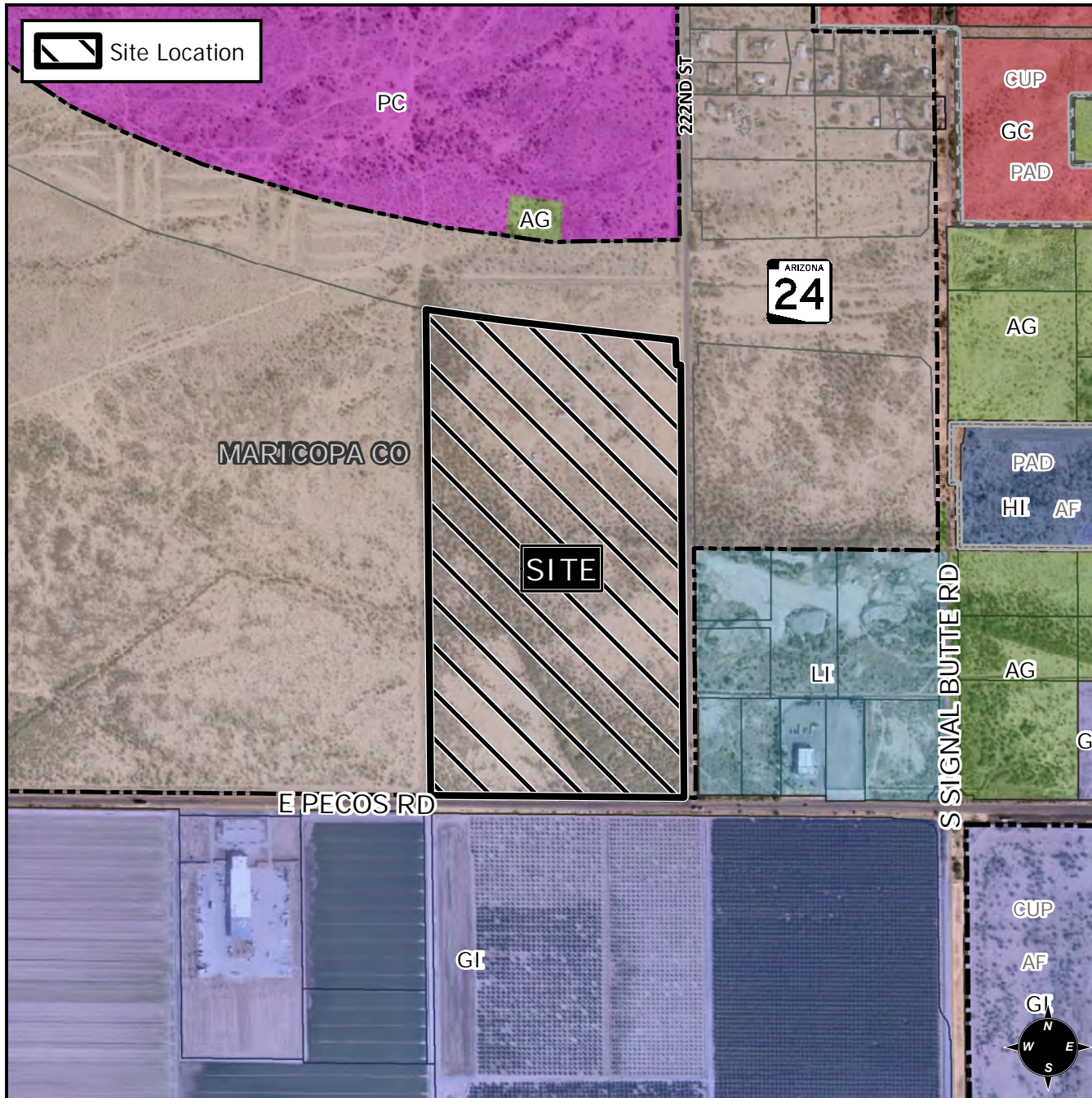


Planning and Zoning Vicinity Map: ZON21-00730



Case Details

CASE: ZON21-00730 PRE-PLAT :

SITE / ADDRESS:
 District 6. Within the 10300 to 10600 blocks of East Pecos Road (north side) and within the 6400 to 6800 blocks of South 222nd Street (west side). Located west of Signal Butte Road on the north side of Pecos Road. (71.3± acres).

REQUEST:
 Rezone from Agriculture (AG) to Light Industrial (LI); Site Plan Review and Special Use Permits. This request will allow for industrial development.

