



Design Review Board



DRB23-00456

Chase

Cassidy Welch, Senior Planner

February 13, 2024



Request

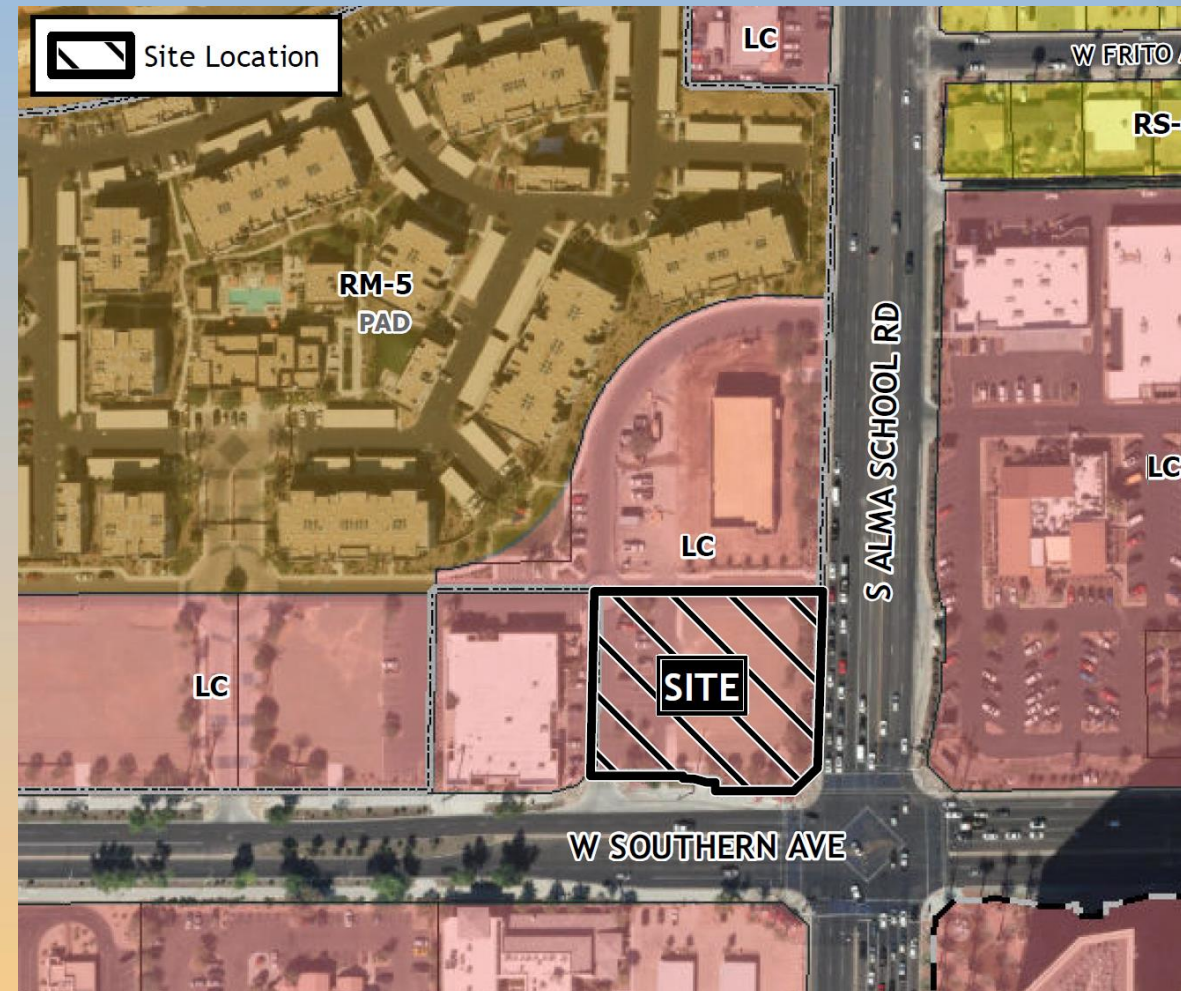
- Design Review
- To allow for a bank with an ATM drive-thru





Location

- North of Southern Avenue
- West of Alma School Road





Site Photos

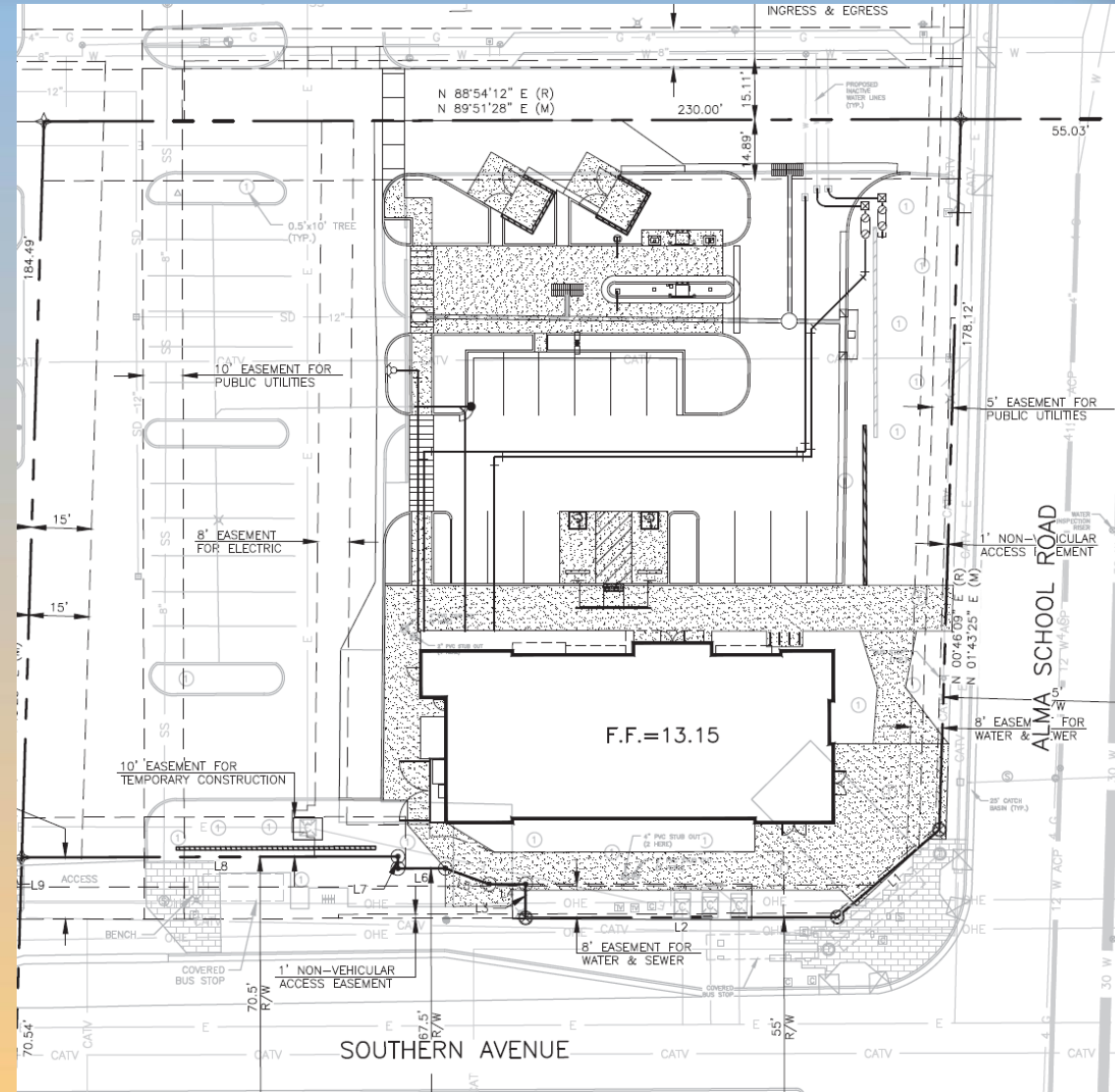


Looking north towards the site



Site Plan

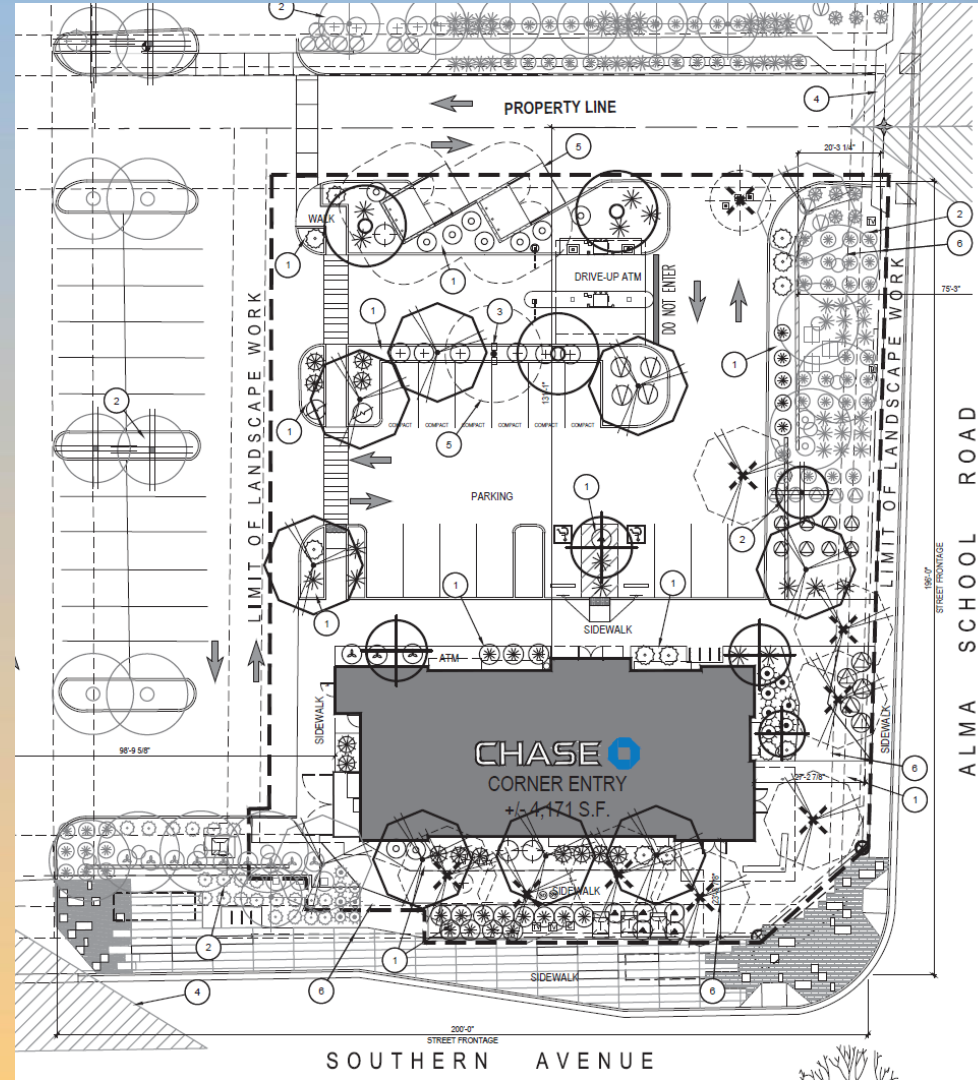
- 4,171 SF bank building
- Drive-up ATMs north of building
- Access from existing shared drives on Southern & Alma School





Landscape Plan

PLANT LEGEND		
SYMBOL	BOTANICAL NAME	COMMON NAME
TREES		
	<i>ACACIA ANEURA</i>	MULGA TREE
	CASCALOTE	CAESALPINIA CACALACO
	PARKINSONIA HYBRID "AZT"	PALO VERDE 'AZT SONORAN' MULTI-TRUNK'
	PROSOPIS HYBRID 'LESLIE ROY'	HYBRID THORNLESS MESQUITE
	EXISTING TREE TO BE REMOVED	
SHRUBS		
	<i>CAESALPINIA PULCHERRIMA</i>	RED BIRD OF PARADISE
	<i>LEUCOPHYLLUM 'RIO BRAVO'</i>	RIO BRAVO TEXAS SAGE
	<i>RUSSELIA EQUISETIFORMIS</i>	CORAL FOUNTAIN
	<i>SIMMONDSIA CHINENSIS</i>	JOJOBA





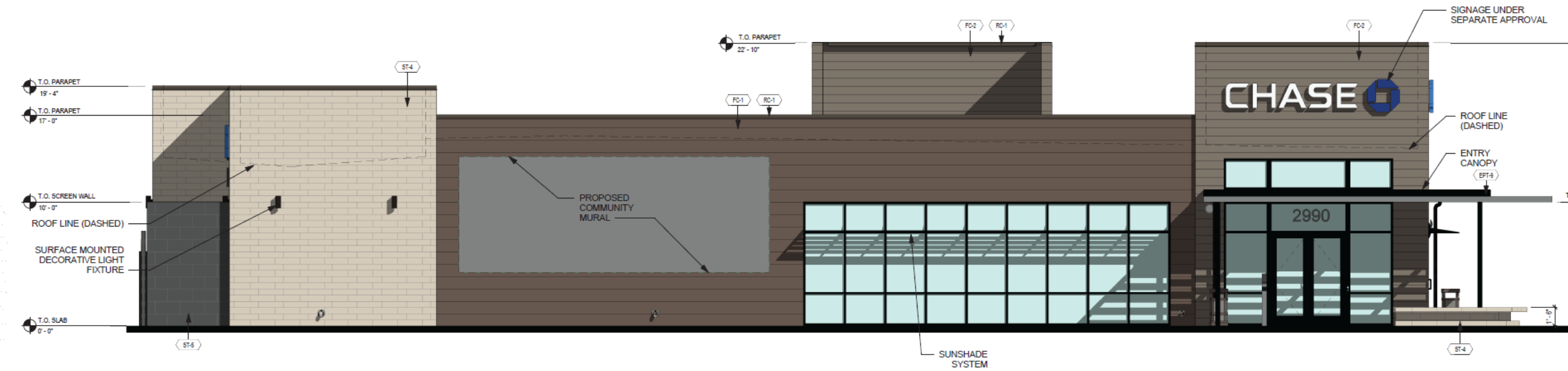
Elevations



1 NORTH ELEVATION
 A2.1 SCALE: 3/16" = 1'-0"



Elevations



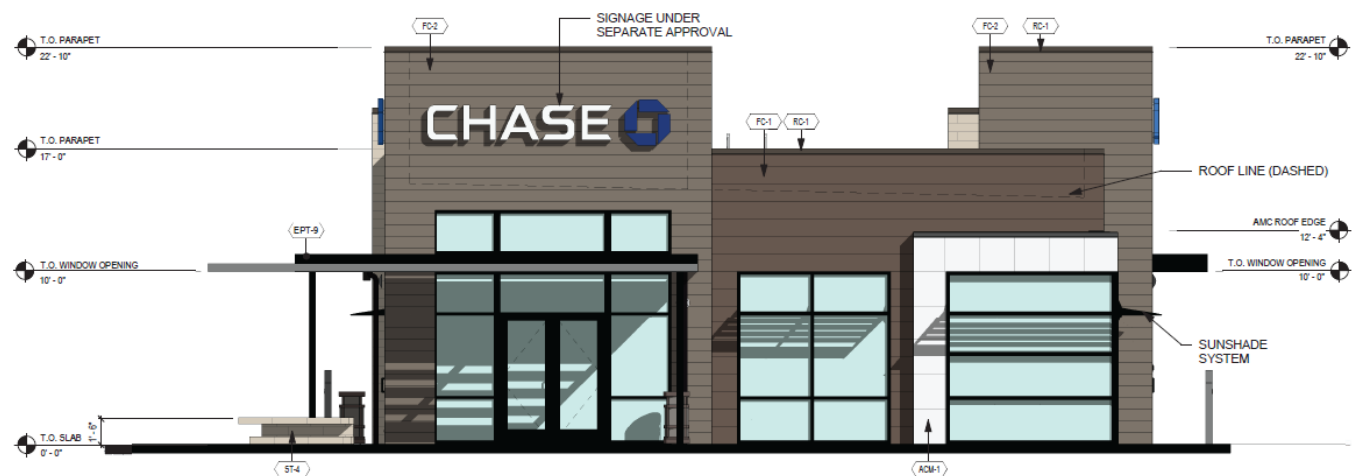
2
A2.1

SOUTH ELEVATION - SOUTHERN AVENUE FRONTAGE

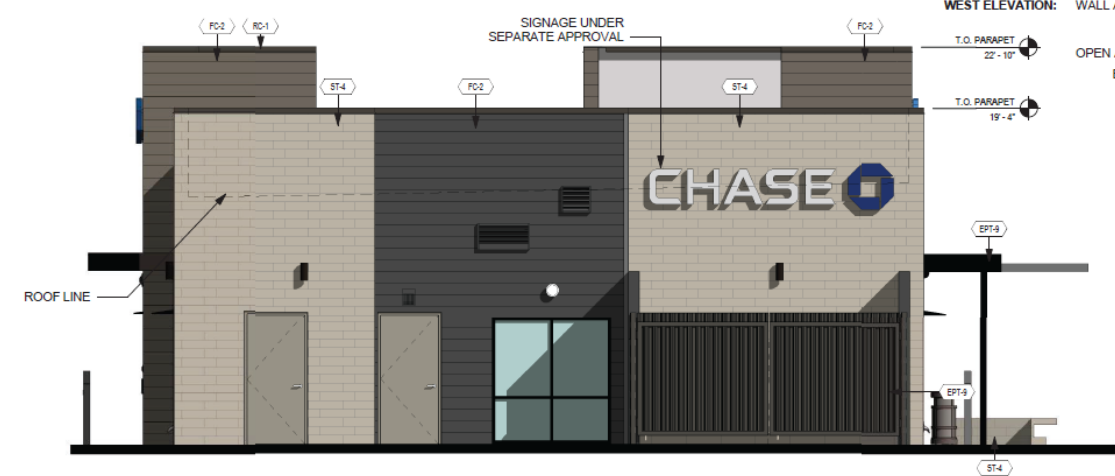
SCALE: 3/16" = 1'-0"



Elevations



3 EAST ELEVATION - ALMA SCHOOL ROAD FRONTAGE
SCALE: 3/16" = 1'-0"



4 WEST ELEVATION
SCALE: 3/16" = 1'-0"



Renderings



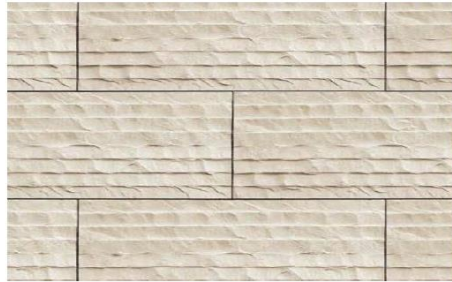


Renderings





Color and Material Board



ST-4 - MANUFACTURED THIN STONE VENEER



ST-5 - MANUFACTURED THIN STONE VENEER



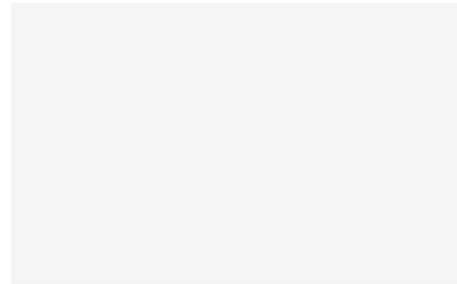
EPT-9 - EXTERIOR PAINT (MATCH FC-1)



RC-1 - ROOF COPING



FC-1 - FIBER CEMENT PANEL - DARK



ACM-1 - ALUMINUM COMPOSITE MATERIAL



FC-2 - FIBER CEMENT PANEL - LIGHT



Alternative Compliance

- ✓ Treatments. All facades shall have a recognizable base and top



Findings

Staff is seeking your review and recommendation on the following:

- ✓ Proposed building elevations and landscape design
- ✓ Alternative compliance request

Staff welcomes any feedback



Design Review Board