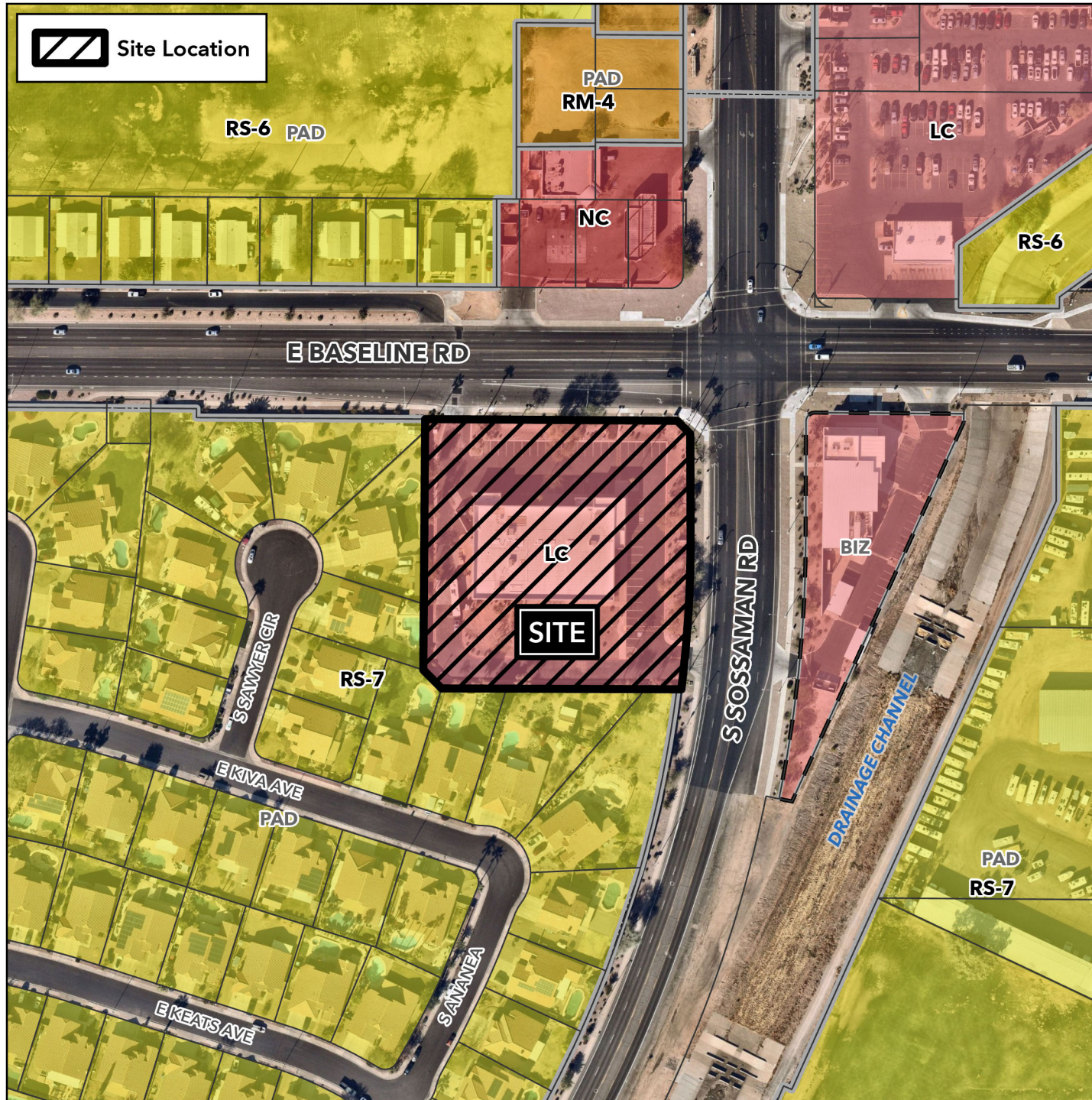


# Planning and Zoning Vicinity Map: ZON25-00163

## Case Details



Site Location



### Case:

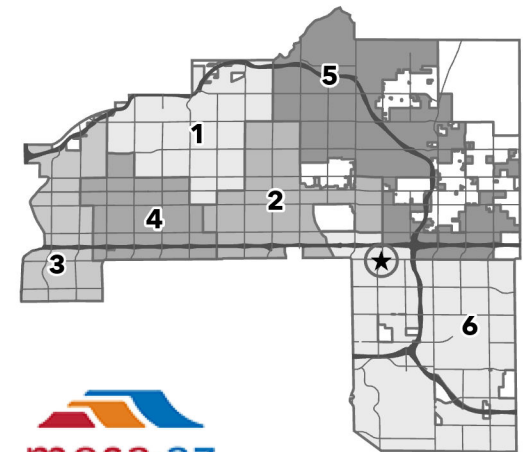
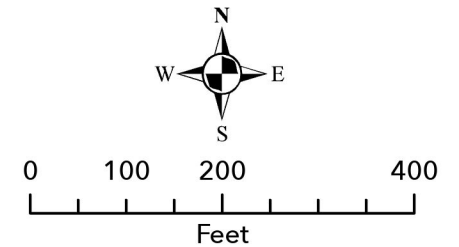
ZON25-00163

### Site / Address:

(District 6). 2.1± acres located at 7561 East Baseline Road.

### Request:

Major Site Plan Modification and amending Condition of Approval No. 1 for case Z97-048 to allow for the expansion of an approximately 26,636± square foot minor vehicle service and repair use.



mesa·az