



FRONT ELEVATION



SIDE ELEVATION



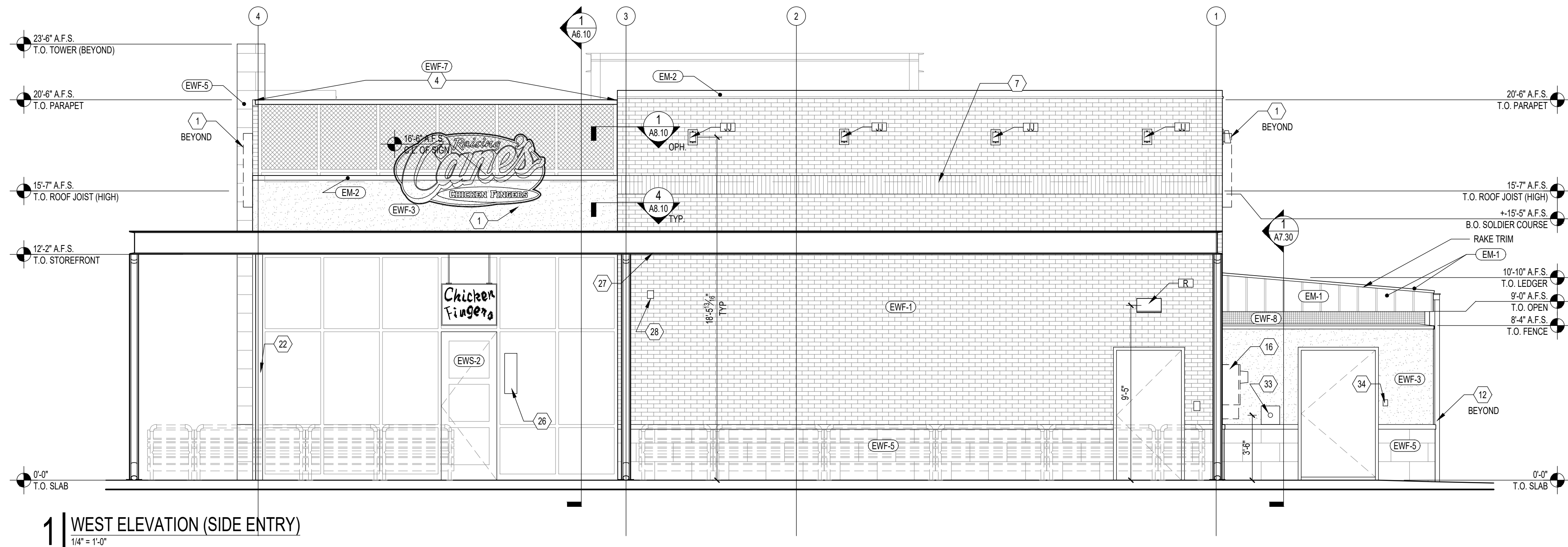
REAR ELEVATION



DRIVE-THRU ELEVATION

#C926 - Power & McKellips - Mesa, AZ

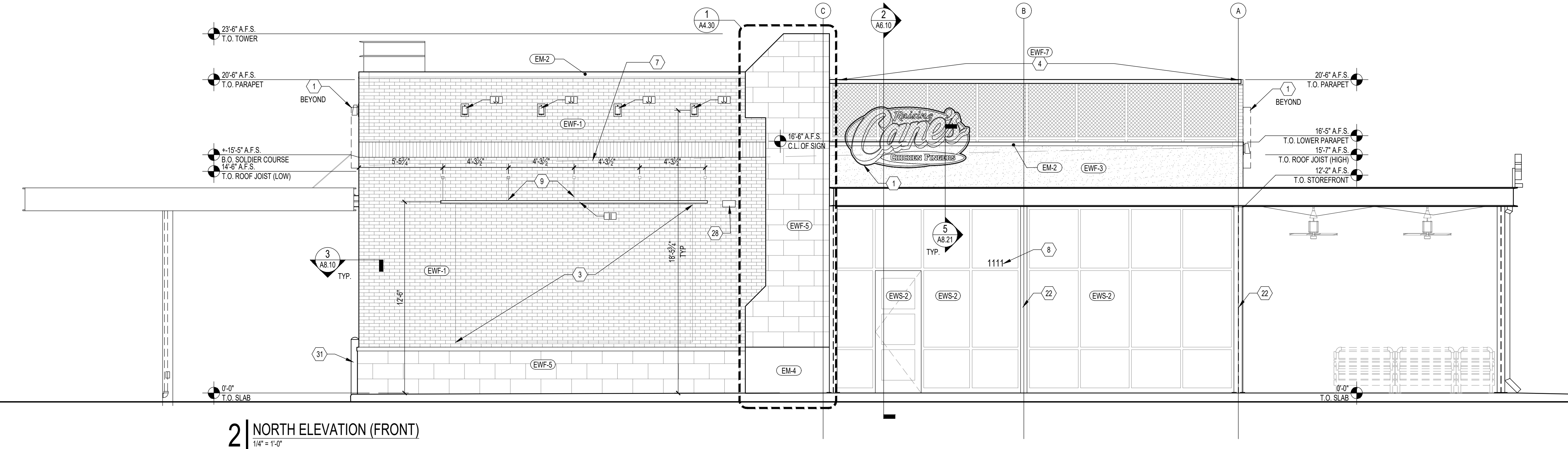




SCHEDULE OF EXTERIOR MATERIALS					
KEY	MATERIALS	MANUFACTURER	PRODUCT	COLOR / FINISH	DESCRIPTION
EM-1	STANDING SEAM ROOF	BERRIDGE	REFER TO SPEC	KYNAR 500 MATTE BLACK	GALVANIZED STEEL SHEET W/ KYNAR FINISH STANDARD COLOR
EM-2	METAL CAP FLASHING	REFER TO SPEC	REFER TO SPEC	KYNAR 500 MATTE BLACK	GALVANIZED STEEL SHEET W/ KYNAR FINISH STANDARD COLOR
EM-3	POWDER COATED STEEL	SIGNAGE SUPPLIER		CHARCOAL	METAL ACCENT PANEL
EM-4	METAL ACCENT PANELS	SIGNAGE SUPPLIER		DISTRESSED/SALVAGED RED	METAL PANELS TO BE APPLIED OVER METAL PANEL WALL EWF-1
EWF-1	THIN BRICK VENEER	BORAL	QUEEN BRICK	ALAMO	MORTAR: LAFARGE IVORY BUFF, SACK RUB FINISH
EWF-2	THIN BRICK VENEER	-	-	WHITE BRICK	REFER TO FINISH SCHEDULE
EWF-3	ELASTOMERIC COATING	DRYVIT	SANDPEBBLE E	132 MOUNTAIN FOG	APPLIED OVER PORTLAND CEMENT STUCCO EXTERIOR WALL.
EWF-5	STONE VENEER			WHITE STONE VENEER	
EWF-6	CAST STONE LEDGE	MARCSTONE		0658 ARCHITECT'S GREY	MORTAR: ARGOS MAGNOLIA MASON'S MIX
EWF-7	PARAPET ARCHITECTURAL PANEL	SIGNAGE SUPPLIER	PARAPET PANEL AND FRAME	REFER TO DETAIL A4.10.30	PERFORATED ALUMINUM PANEL OVER OPAQUE POLYCARBONATE PANEL
EWF-8	MESH SCREEN PAINTED TO MATCH METAL ROOF				
EWS-1	DRIVE-THRU WINDOW	REFER TO WINDOW SCHED.	REFER TO WINDOW SCHED.	REFER TO WINDOW SCHED.	
EWS-2	ALUMINUM STOREFRONT	REFER TO WINDOW SCHED.	REFER TO WINDOW SCHED.	REFER TO WINDOW SCHED.	

WEST ELEVATION (SIDE ENTRY) MATERIAL PERCENTAGES			
KEY	MATERIALS	SQ.FT.	COVERAGE %
EWF-1&2	THIN BRICK VENEER	571	47%
EWF-3	STUCCO	164	14%
EWF-5&6	STONE VENEER	129	11%
EWF-7	MESH SCREENING WITH OPAQUE BACKING	80	7%
EWF-8	MESH INFILL	7	1%
EWS-1	DRIVE-THRU WINDOW	-	-
EWS-2	ALUMINUM STOREFRONT	239	20%
TOTAL SURFACE:		1190	100%

NORTH ELEVATION (FRONT) MATERIAL PERCENTAGES			
KEY	MATERIALS	SQ.FT.	COVERAGE %
EWF-1&2	THIN BRICK VENEER	471	39%
EWF-3	STUCCO	115	9%
EWF-5&6	STONE VENEER	188	16%
EWF-7	MESH SCREENING WITH OPAQUE BACKING	110	9%
EWS-1	DRIVE-THRU WINDOW	-	-
EWS-2	ALUMINUM STOREFRONT	330	27%
TOTAL SURFACE:		1,214	100%



SYMBOL LEGEND	
	WINDOW DESIGNATION
	KEY NOTE
	DOOR DESIGNATION
Room name 5555	ROOM NAME & NUMBER
	DETAIL OR SECTION DESIGNATION
	INTERIOR ELEVATION MARK
	EXTERIOR ELEVATION MARK
	FINISH TAG

KEYNOTES	
1	SIGN, BY OWNER. PROVIDE BLOCKING AS REQ'D (4'-0" x 8'-0" OVAL.)
3	WALL ART BY OWNER
4	MESH SCREENING OVER OPAQUE BACKING PARAPET, BY OWNER. PROVIDE BLOCKING AS REQ'D
5	METAL COUNTER FLASHING WHERE SLOPED ROOF ATTACHES TO EXTERIOR FINISH
6	PRE-FABRICATED METAL CANOPY, G.C. TO PERMIT SEPARATELY
7	BACK OF PARAPET, TOP OF ROOF LINE BEYOND
8	ADDRESS NUMBERS IN 6" CHARACTERS, SIZE AND LOCATION AS REQUIRED BY AHJ
9	GUY WIRE ABOVE LIGHT FIXTURE, TYP.
10	PREFABRICATED OPENING IN MESH PARAPET PANEL FOR GAS LINE
12	METAL, GUTTER & DOWNSPOUT, FINISH AS NOTED, RE: A0.10 FOR CONTINUATION
14	STAINLESS STEEL SILL
16	UTILITY METERS & CONDUIT, PAINT TO MATCH ADJACENT CLADDING MATERIAL
19	GAS METER
22	BRAKE METAL BETWEEN WINDOWS PRE-FINISHED TO MATCH STOREFRONT
26	BLANK PLATE INSTALL ON EXTERIOR OF GLASS TO HIDE INTERIOR SIGNAGE
27	IT PENETRATION FOR SECURITY CAMERAS
28	EXTERIOR SPEAKERS
29	NOT USED
31	4" BOLLARD W/ BLACK PLASTIC SLEEVE RE: 2/A0.22
32	2X WOOD BLOCKING REQUIRED IN WALL CAVITY. REFER TO WALL SECTIONS.
33	DARPRO OUTLET AND SECURITY BOX
34	ORIA 4-DIGIT KEY STORAGE BOX
35	CO2 PORT
GENERAL NOTES	
1	SIGNAGE TO BE APPROVED UNDER SEPARATE FILING (DEFERRED SUBMITTAL).
2	CANOPIES AND AWNINGS ARE REQUESTED AS DEFERRED SUBMITTALS AS INDICATED ON SHEET PCS. G.C. TO PERMIT CANOPIES AND AWNINGS USING MANUFACTURER SPECIFICATIONS AND SHOP DRAWINGS.
3	CONFIRM OUTDOOR SPEAKER LOCATIONS WITH I.T.
4	VERIFY ROOF FLAGS, LOGO SIGNS, PAINTED MURAL W/ SIGNAGE VENDOR.
SEALANT NOTES	
1	PROVIDE SEALANT & BACKER RODS AT ALL DISSIMILAR MATERIALS.
2	MATCH FRAME COLOR AT ALL DOORS AND WINDOWS. MATCH ADJACENT WALL MATERIAL COLOR AT WALL PENETRATIONS AND CONSTRUCTION JOINTS; AT JOINT BETWEEN TWO DIFFERENT WALL MATERIALS, MATCH DARKER MATERIAL.



Store: 2165 N POWER RD.
MESA, AZ 85215
Restaurant #C0926
P6E-AV



76 E. MITCHELL DR
PHOENIX, AZ 85012

CONTACT: CHUCK BENNETT
PHONE: 423-432-0596
EMAIL: CBENNETT@PMDC.COM

KEN MCCracken, ARCHITECT

Prototype :	6E-AV
Prototype Issue Date:	09.2022
Design Bulletin Updates:	INCLUDED
Date Issued:	Bulletin Number:
09.2022	V 2022 - 1.0

PERMIT SET

ISSUES		
1	12.07.22	SITE PLAN SUBMITTAL
2	01.16.23	2ND SITE PLAN SUBMITTAL
3	03.27.23	3RD SITE PLAN SUBMITTAL
4		
5		
6		
REVISION		
1		
2		
3		
4		
5		
6		

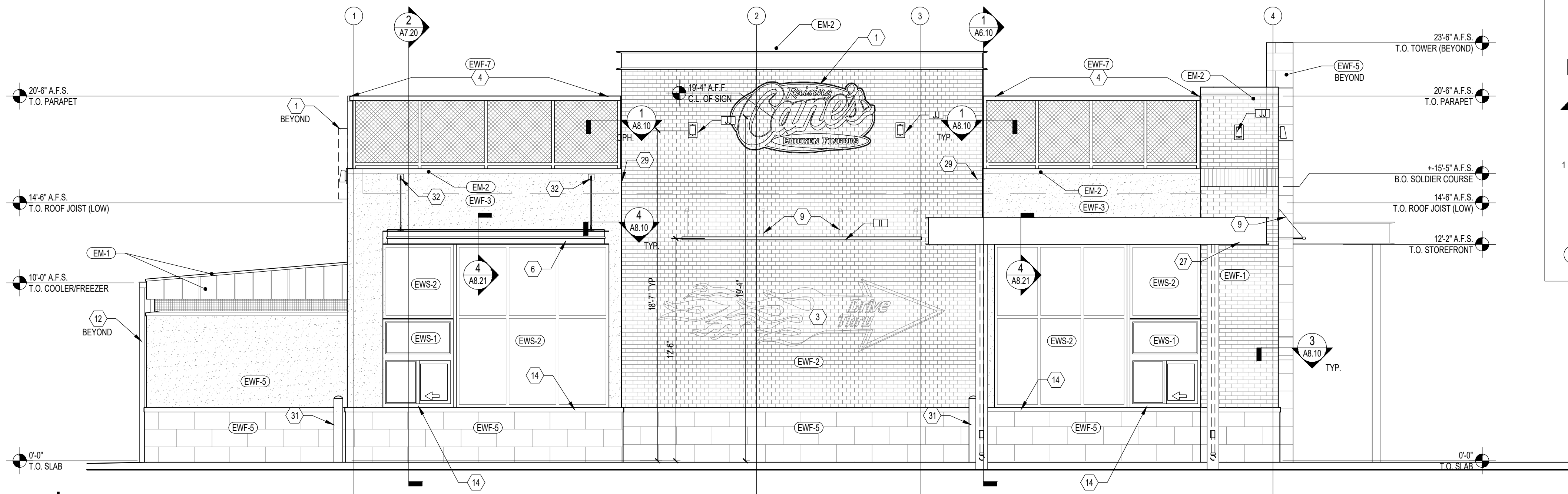
Sheet Title:

EXTERIOR ELEVATIONS

Date:	03.27.2023
Project Number:	RAC22014.0
Drawn By:	KTA

Sheet Number:

A4.10



1 | SOUTH ELEVATION (DRIVE-THRU)
1/4" = 1'-0"

SCHEDULE OF EXTERIOR MATERIALS

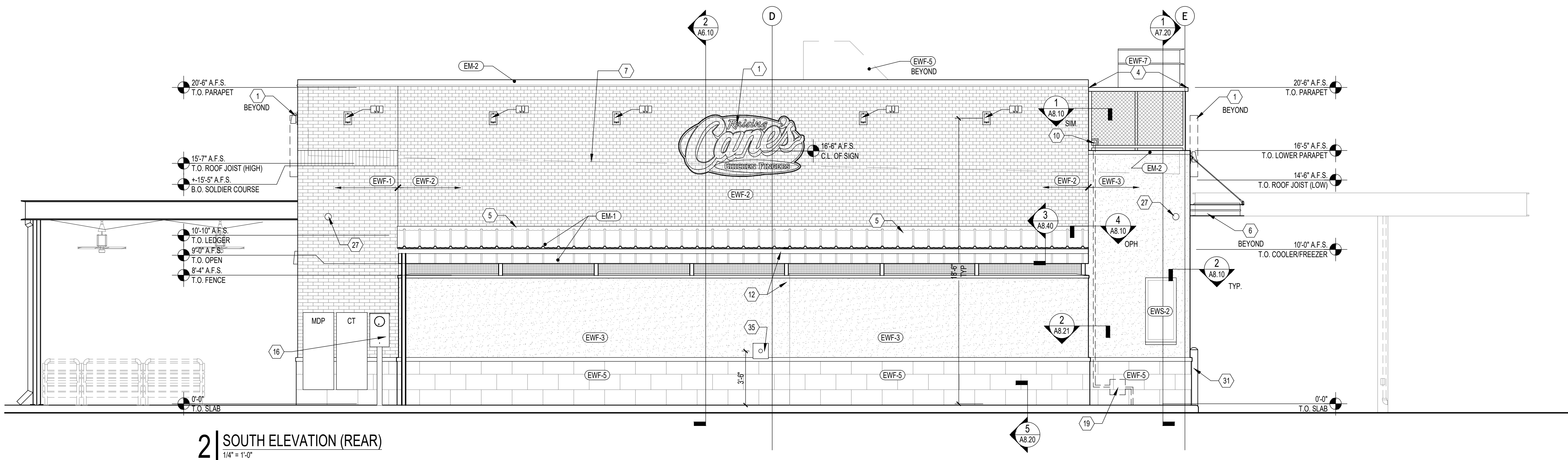
KEY	MATERIALS	MANUFACTURER	PRODUCT	COLOR / FINISH	DESCRIPTION
EM-1	STANDING SEAM ROOF	BERRIDGE	REFER TO SPEC	KYNAR 500 MATTE BLACK	GALVANIZED STEEL SHEET W/ KYNAR FINISH STANDARD COLOR
EM-2	METAL CAP FLASHING	REFER TO SPEC	REFER TO SPEC	KYNAR 500 MATTE BLACK	GALVANIZED STEEL SHEET W/ KYNAR FINISH STANDARD COLOR
EM-3	POWDER COATED STEEL	SIGNAGE SUPPLIER		CHARCOAL	METAL ACCENT PANEL
EM-4	METAL ACCENT PANELS	SIGNAGE SUPPLIER		DISTRESSED/SALVAGED RED	METAL PANELS TO BE APPLIED OVER METAL PANEL WALL EWF-1
EWF-1	THIN BRICK VENEER	BORAL	QUEEN BRICK	ALAMO	MORTAR: LAFARGE IVORY BUFF, SACK RUB FINISH
EWF-2	THIN BRICK VENEER	-	-	WHITE BRICK	REFER TO FINISH SCHEDULE
EWF-3	ELASTOMERIC COATING	DRYVIT	SANDPEBBLE E	132 MOUNTAIN FOG	APPLIED OVER PORTLAND CEMENT STUCCO EXTERIOR WALL.
EWF-5	STONE VENEER			WHITE STONE VENEER	
EWF-6	CAST STONE LEDGE	MARCSTONE		6658 ARCHITECT'S GREY	MORTAR: ARGOS MAGNOLIA MASON'S MIX
EWF-7	PARAPET ARCHITECTURAL PANEL	SIGNAGE SUPPLIER	PARAPET PANEL AND FRAME	REFER TO DETAIL 4/A0.30	PERFORATED ALUMINUM PANEL OVER OPAQUE POLYCARBONATE PANEL
EWF-8	MESH SCREEN PAINTED TO MATCH METAL ROOF				
EWS-1	DRIVE-THRU WINDOW	REFER TO WINDOW SCHED.	REFER TO WINDOW SCHED.	REFER TO WINDOW SCHED.	
EWS-2	ALUMINUM STOREFRONT	REFER TO WINDOW SCHED.	REFER TO WINDOW SCHED.	REFER TO WINDOW SCHED.	

WEST ELEVATION (SIDE ENTRY) MATERIAL PERCENTAGES

KEY	MATERIALS	SQ.FT.	COVERAGE %
EWF-1&2	THIN BRICK VENEER	486	39%
EWF-3	STUCCO	206	16%
EWF-5&6	STONE VENEER	218	17%
EWF-7	MESH SCREENING WITH OPAQUE BACKING	108	9%
EWF-8	MESH INFILL	7	1%
EWS-2	ALUMINUM STOREFRONT	229	18%
TOTAL SURFACE:		1255	100%

SOUTH ELEVATION (REAR) MATERIAL PERCENTAGES

KEY	MATERIALS	SQ.FT.	COVERAGE %
EWF-1&2	THIN BRICK VENEER	547	49%
EWF-3	STUCCO	332	29%
EWF-5&6	STONE VENEER	180	16%
EWF-7	MESH SCREENING WITH OPAQUE BACKING	27	2%
EWF-8	MESH INFILL	30	3%
EWS-1	DRIVE-THRU WINDOW	-	-
EWS-2	ALUMINUM STOREFRONT	9	1%
TOTAL SURFACE:		1125	100%



2 | SOUTH ELEVATION (REAR)
1/4" = 1'-0"

SYMBOL LEGEND

	WINDOW DESIGNATION
	KEY NOTE
	DOOR DESIGNATION
Room name	ROOM NAME & NUMBER
5555	ROOM NAME & NUMBER
	DETAIL OR SECTION DESIGNATION
1	DETAIL OR SECTION DESIGNATION
	INTERIOR ELEVATION MARK
1A.1	INTERIOR ELEVATION MARK
	EXTERIOR ELEVATION MARK
1A.1	EXTERIOR ELEVATION MARK
	FINISH TAG
?	FINISH TAG

KEYNOTES

1	SIGN, BY OWNER, PROVIDE BLOCKING AS REQ'D (4'-0" x 8'-0" OVAL)
3	WALL ART BY OWNER
4	MESH SCREENING OVER OPAQUE BACKING PARAPET, BY OWNER, PROVIDE BLOCKING AS REQ'D
5	METAL COUNTER FLASHING WHERE SLOPED ROOF ATTACHES TO EXTERIOR FINISH
6	PRE-FABRICATED METAL CANOPY, G.C. TO PERMIT SEPARATELY
7	BACK OF PARAPET, TOP OF ROOF LINE BEYOND
8	ADDRESS NUMBERS IN 6" CHARACTERS, SIZE AND LOCATION AS REQUIRED BY AHJ
9	GUY WIRE ABOVE LIGHT FIXTURE, TYP.
10	PREFABRICATED OPENING IN MESH PARAPET PANEL FOR GAS LINE
12	METAL, GUTTER & DOWNSPOUT, FINISH AS NOTED, RE: A0.10 FOR CONTINUATION
14	STAINLESS STEEL SILL
16	UTILITY METERS & CONDUIT, PAINT TO MATCH ADJACENT CLADDING MATERIAL
19	GAS METER
22	BRAKE METAL BETWEEN WINDOWS PRE-FINISHED TO MATCH STOREFRONT
26	BLANK PLATE INSTALL ON EXTERIOR OF GLASS TO HIDE INTERIOR SIGNAGE
27	IT PENETRATION FOR SECURITY CAMERAS
28	EXTERIOR SPEAKERS
29	NOT USED
31	4" BOLLARD W/ BLACK PLASTIC SLEEVE RE: 2/A0.22
32	2X WOOD BLOCKING REQUIRED IN WALL CAVITY, REFER TO WALL SECTIONS.
33	DARPRO OUTLET AND SECURITY BOX.
34	ORIA 4-DIGIT KEY STORAGE BOX
35	CO2 PORT

GENERAL NOTES

1	SIGNAGE TO BE APPROVED UNDER SEPARATE FILING (DEFERRED SUBMITTAL).
2	CANOPIES AND AWNINGS ARE REQUESTED AS DEFERRED SUBMITTALS AS INDICATED ON SHEET PCS, G.C. TO PERMIT CANOPIES AND AWNINGS USING MANUFACTURER SPECIFICATIONS AND SHOP DRAWINGS.
3	CONFIRM OUTDOOR SPEAKER LOCATIONS WITH I.T.
4	VERIFY ROOF FLAGS, LOGO SIGNS, PAINTED MURAL W/ SIGNAGE VENDOR.

SEALANT NOTES

1	PROVIDE SEALANT & BACKER RODS AT ALL DISSIMILAR MATERIALS.
2	MATCH FRAME COLOR AT ALL DOORS AND WINDOWS. MATCH ADJACENT WALL MATERIAL COLOR AT WALL PENETRATIONS AND CONSTRUCTION JOINTS. AT JOINT BETWEEN TWO DIFFERENT WALL MATERIALS, MATCH DARKER MATERIAL.



Restaurant Support Office
6800 Bishop Road, Plano, TX 75024
Tele: 972-765-3100 Fax: 972-769-3101

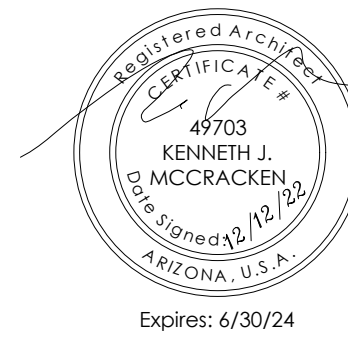
Store: **2165 N POWER RD.**
MESA, AZ 85215
Restaurant #C0926
P6E-AV



76 E. MITCHELL DR
PHOENIX, AZ 85012

CONTACT: CHUCK BENNETT
PHONE: 602-432-0596
EMAIL: CBENNETT@PMAGNC.COM

KEN MCCracken, ARCHITECT



Prototype :	6E-AV
Prototype Issue Date:	09.2022
Design Bulletin Updates:	INCLUDED
Date Issued:	09.2022
Bulletin Number:	V 2022 - 1.0

PERMIT SET

ISSUES

1	12.07.22	SITE PLAN SUBMITTAL
2	01.16.23	2ND SITE PLAN SUBMITTAL
3	03.27.23	3RD SITE PLAN SUBMITTAL

REVISION

1		
2		
3		
4		
5		
6		

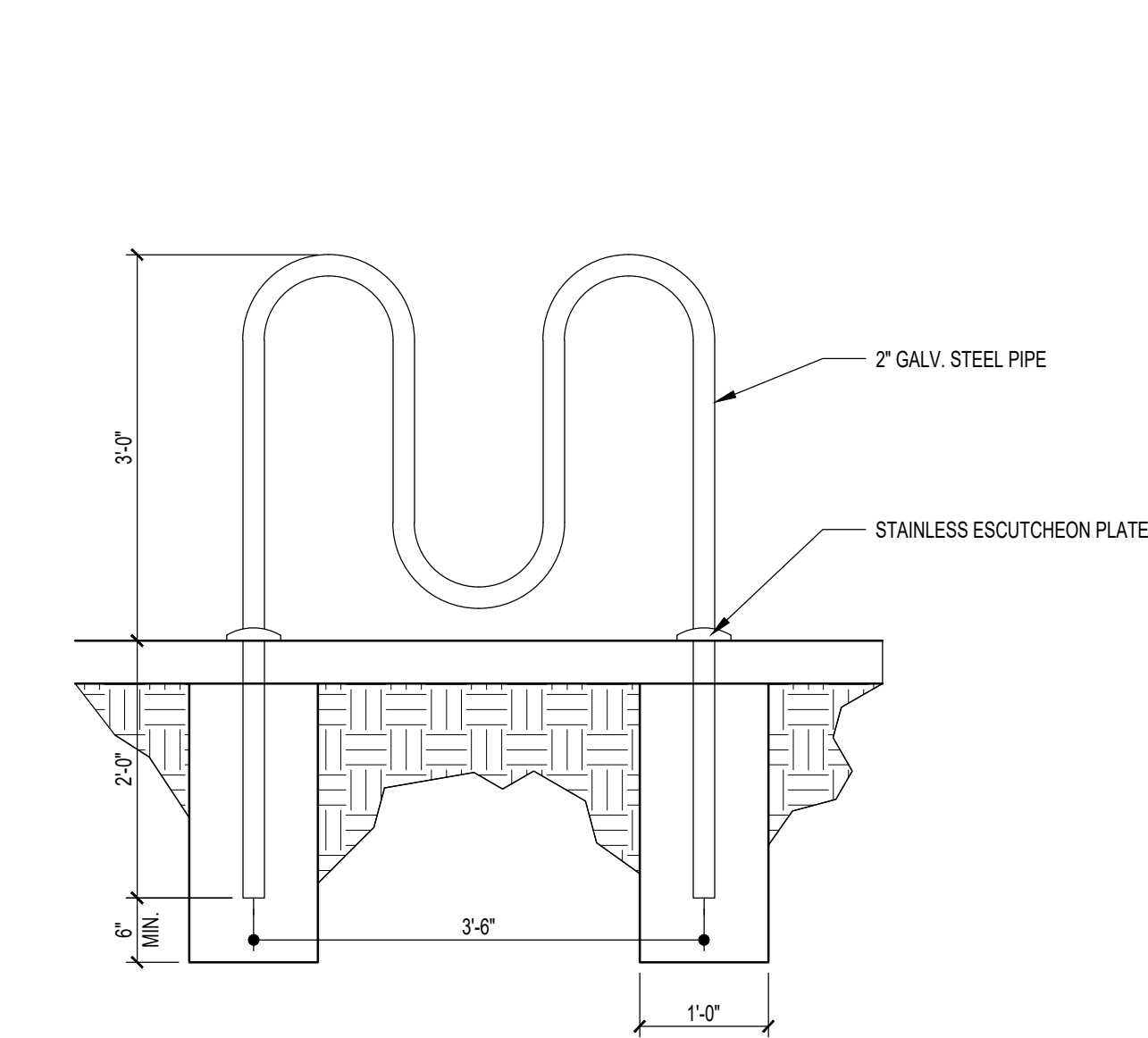
Sheet Title:

EXTERIOR ELEVATIONS

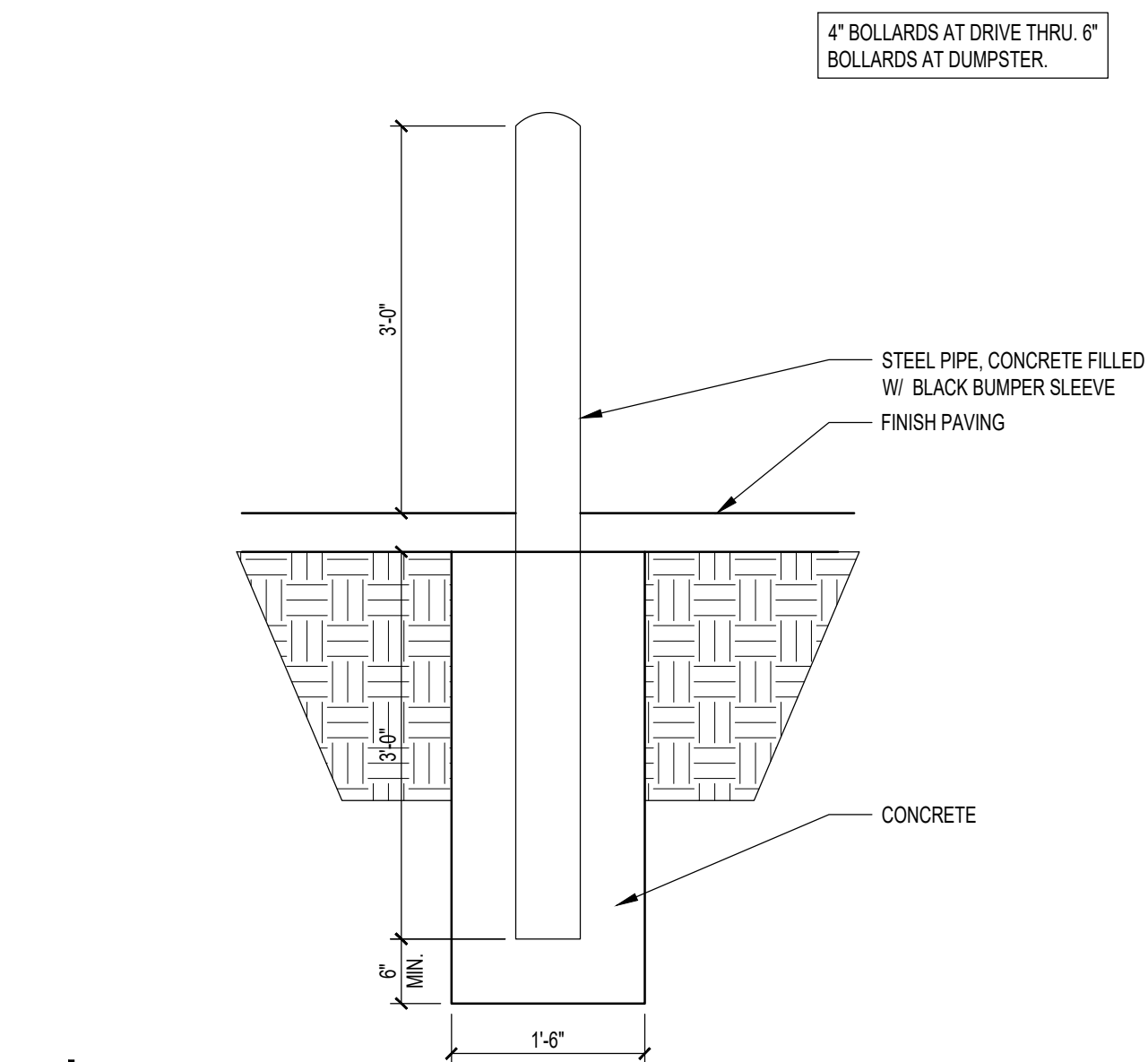
Date: 03.27.2023
Project Number: RAC22014.0
Drawn By: KTA

Sheet Number:

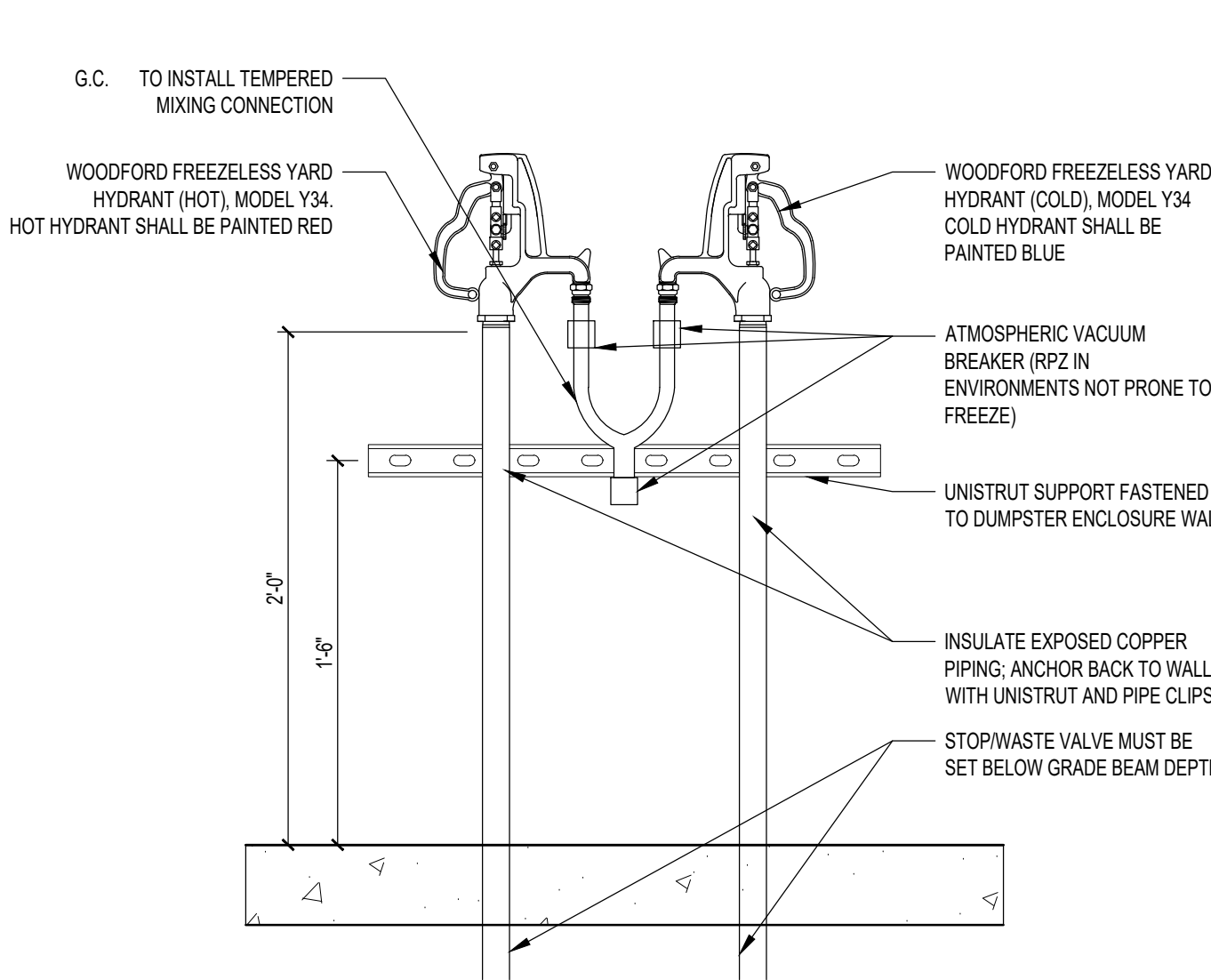
A4.20



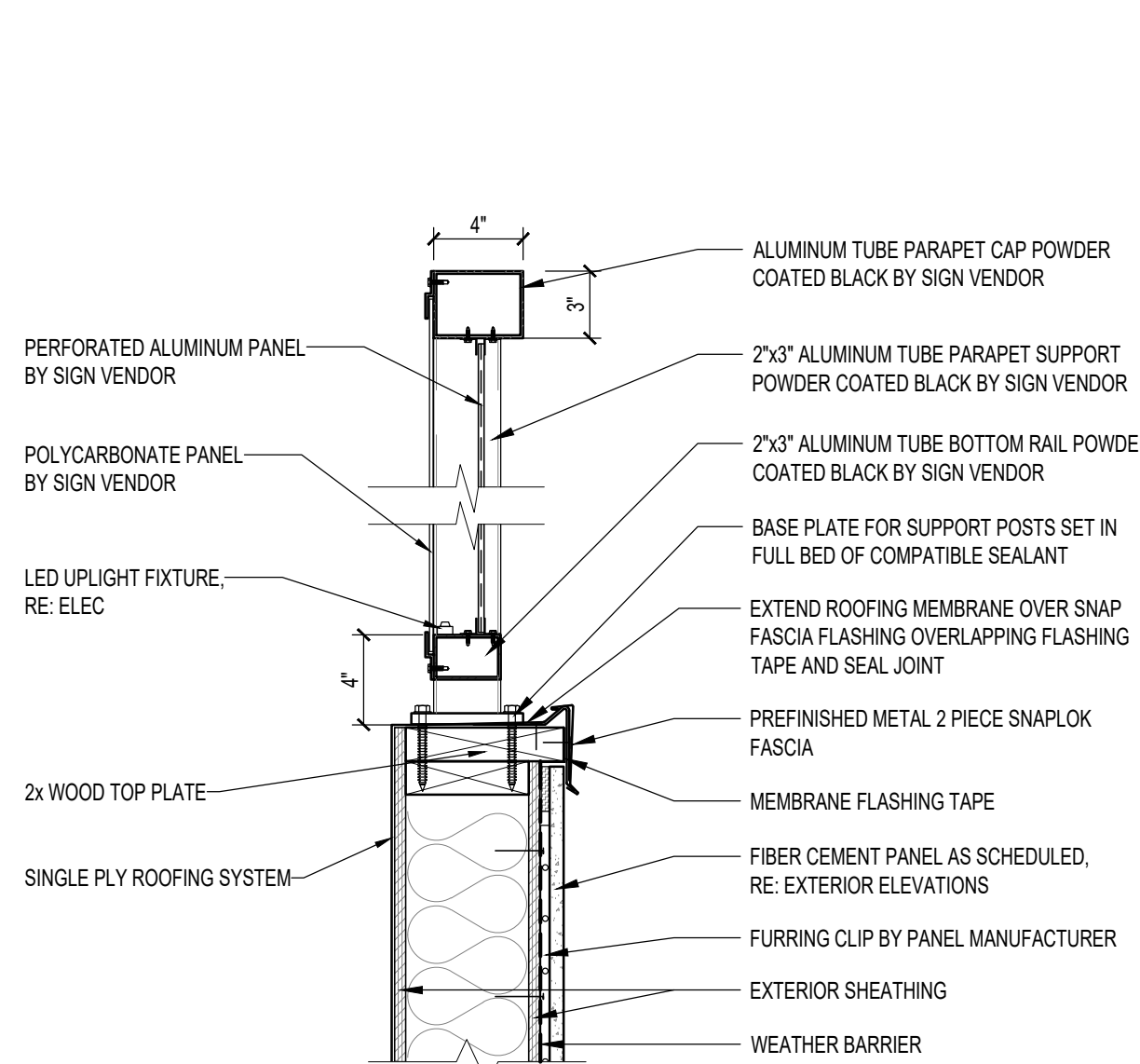
1 | BIKE RACK
3/4" = 1'-0"



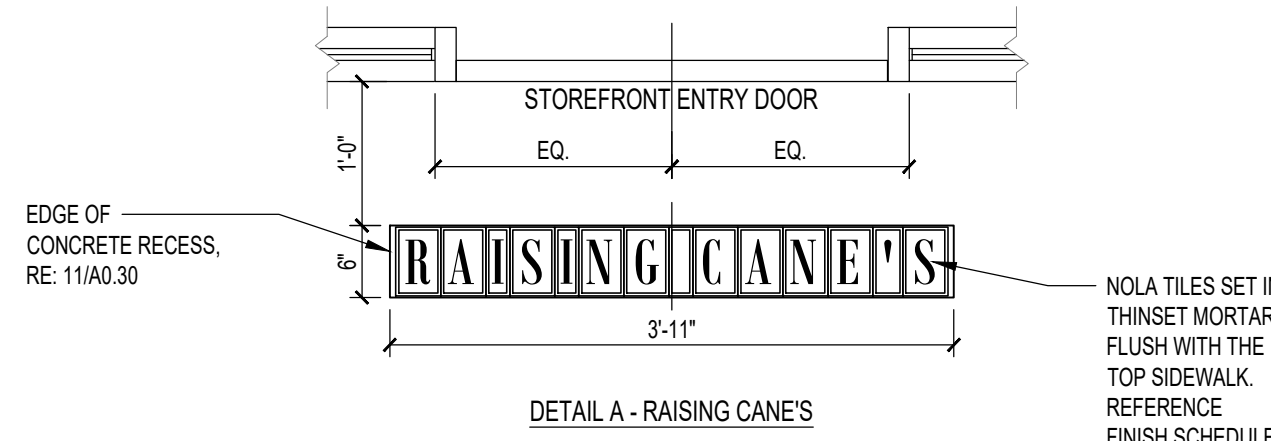
2 | PIPE BOLLARD
3/4" = 1'-0"



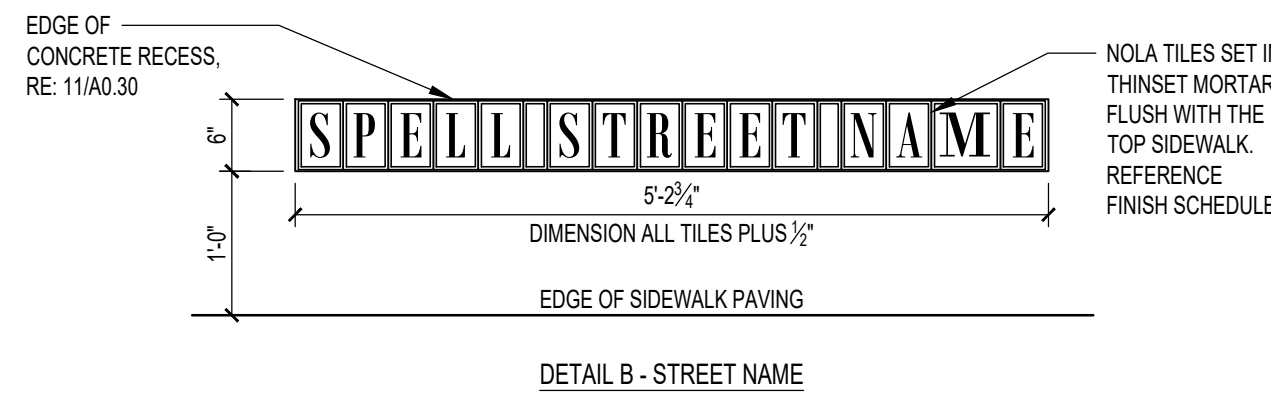
3 | POST HYDRANT
1 1/2" = 1'-0"



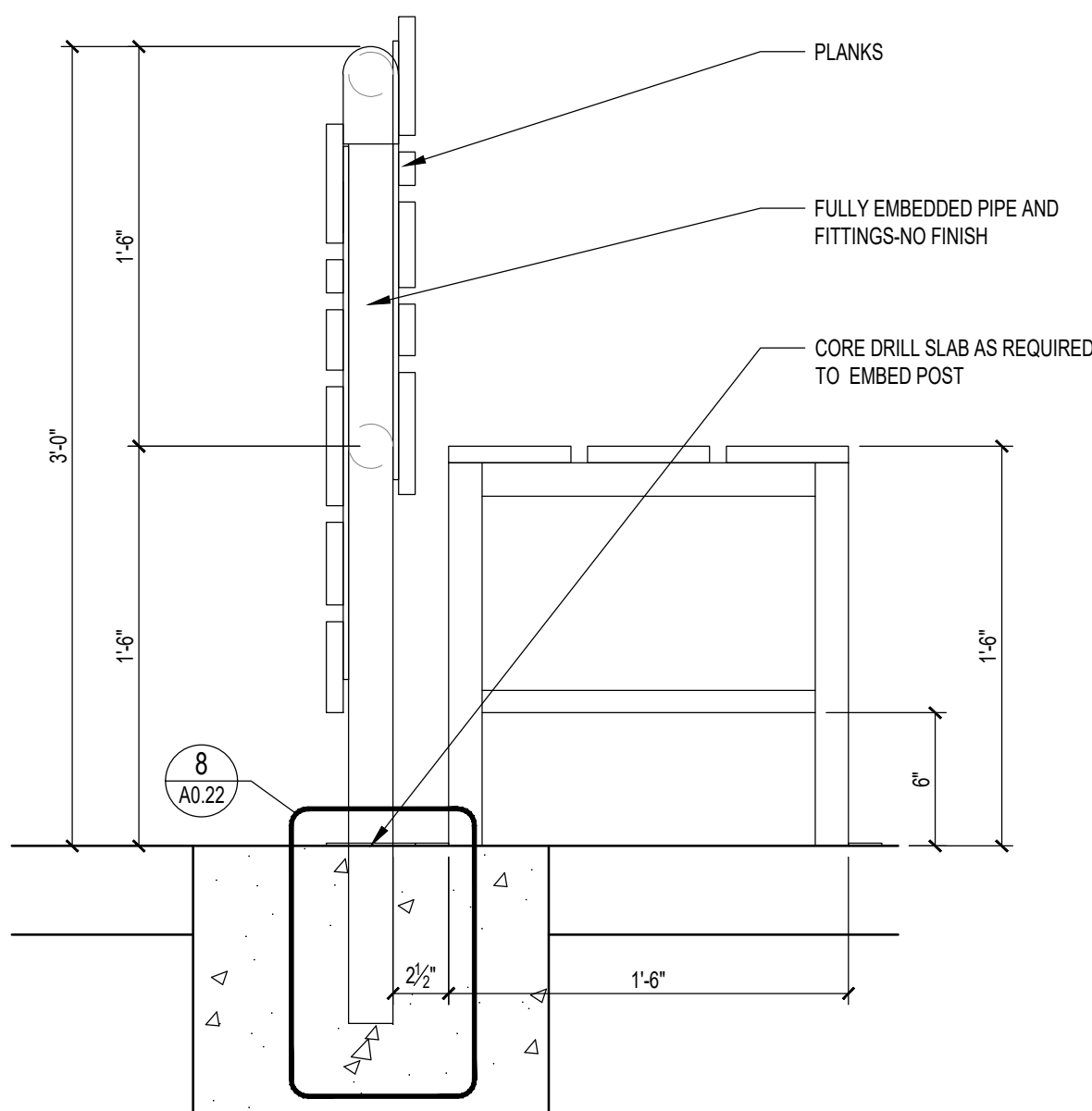
4 | PARAPET PANEL MOUNTING DETAIL
1 1/2" = 1'-0"



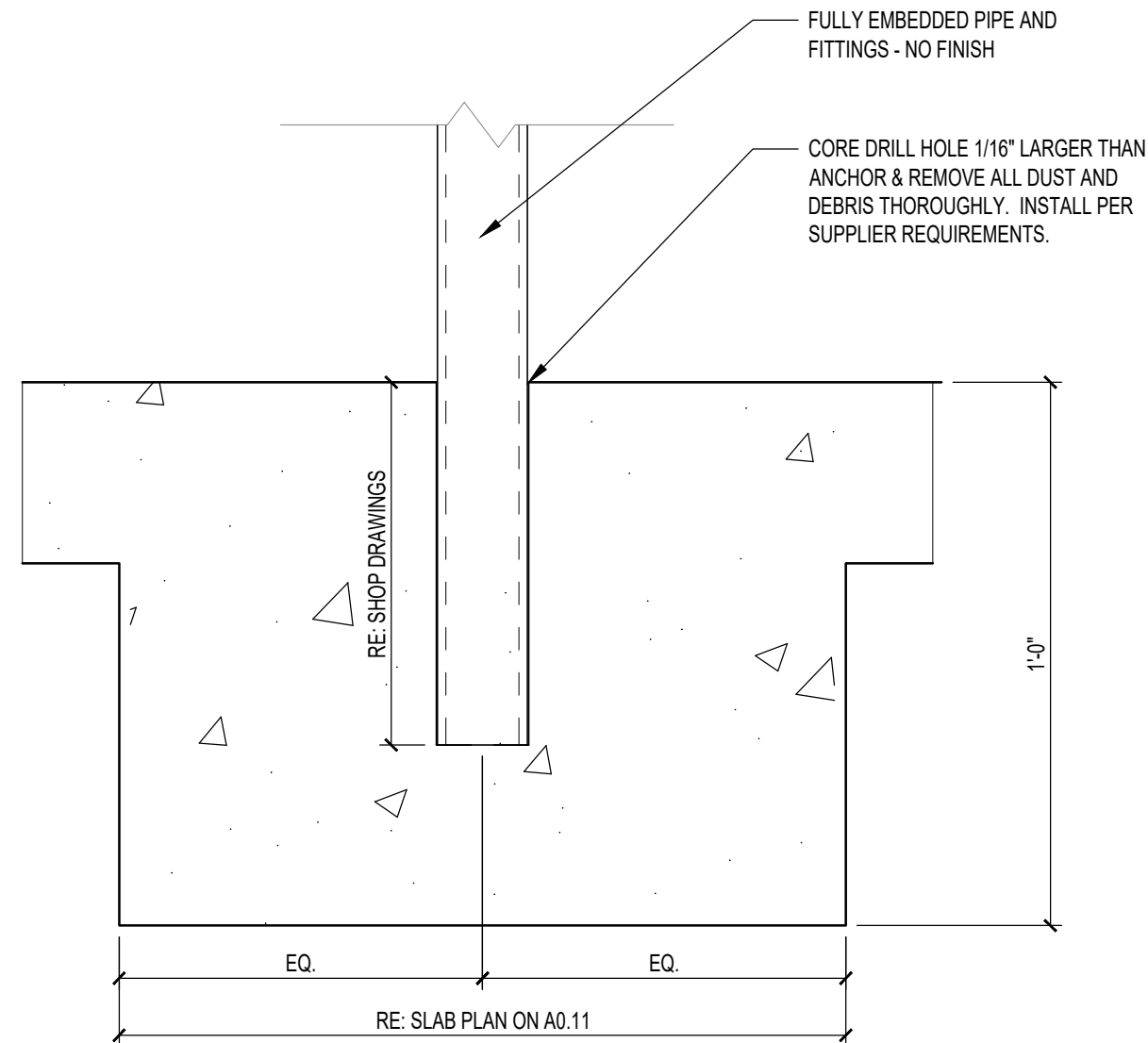
5 | NOT USED
3/4" = 1'-0"



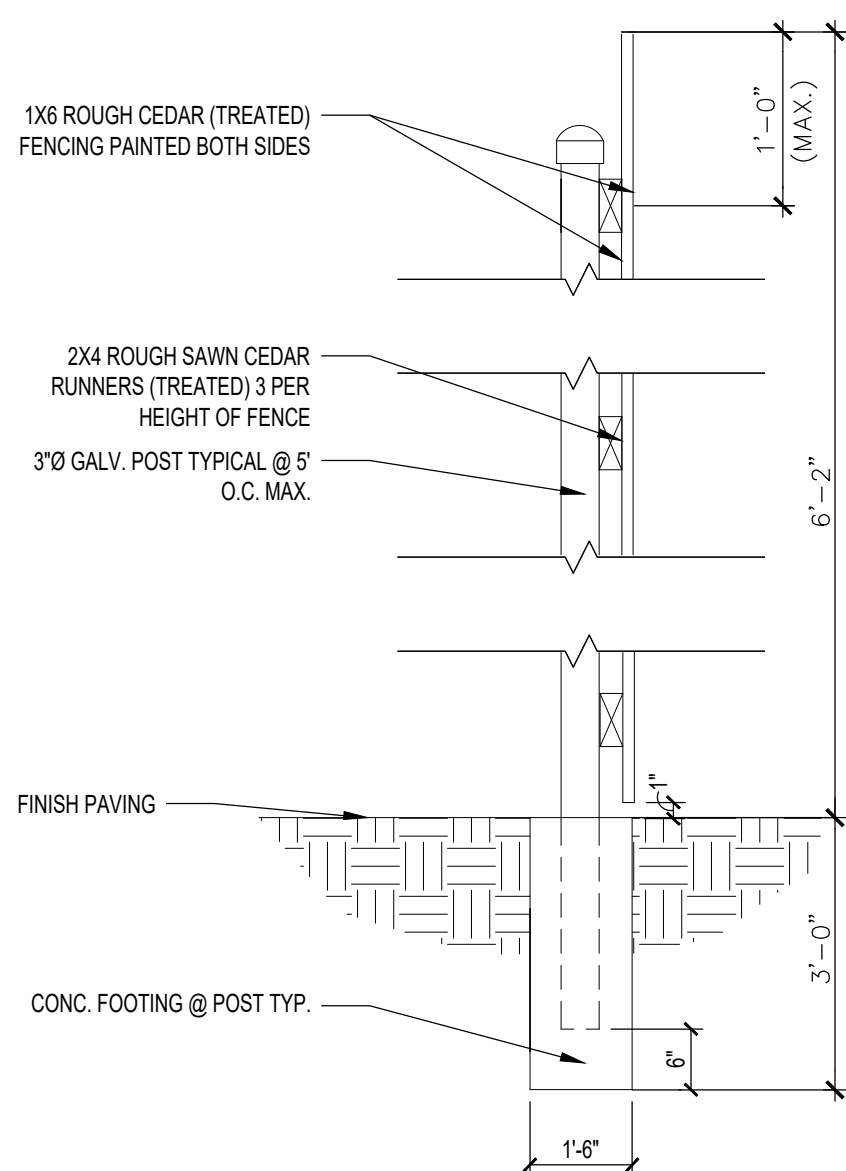
6 | NOLA TILES
3/4" = 1'-0"



7 | EMBEDDED PATIO FURNITURE
1 1/2" = 1'-0"

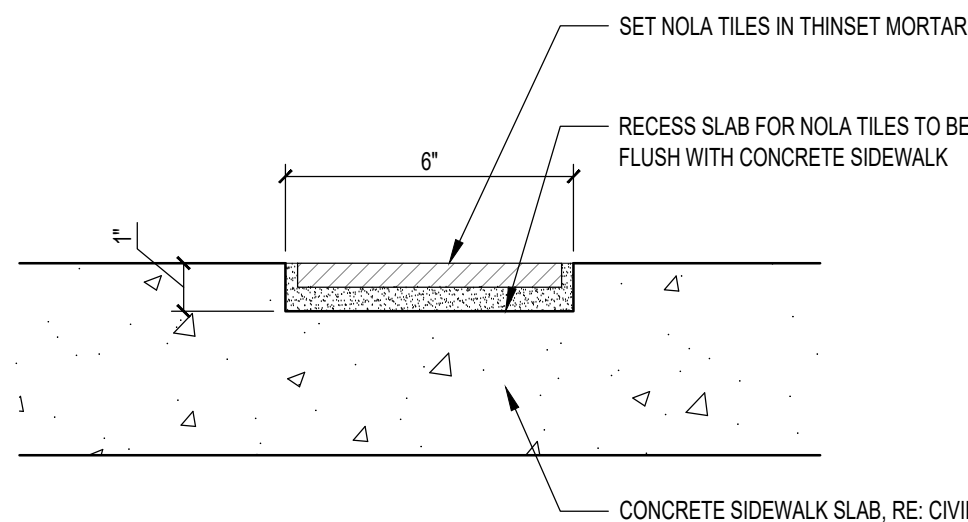


8 | PATIO POST DETAIL
3" = 1'-0"



9 | NOT USED
3" = 1'-0"

10 | CORRAL FENCE
N.T.S.



11 | NOLA TILE SECTION DETAIL
3" = 1'-0"



Restaurant Support Office
6800 Bishop Road, Plano, TX 75024
Tele: 972-769-3100 Fax: 972-769-3101

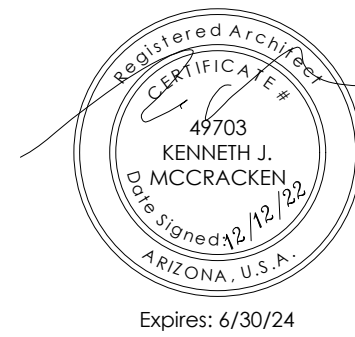
Store: **2165 N POWER RD.**
MESA, AZ 85215
Restaurant #C0926
P6E-AV



76 E. MITCHELL DR
PHOENIX, AZ 85012

CONTACT: CHUCK BENNETT
PHONE: 602-432-0596
EMAIL: CBENNETT@PMDCNC.COM

KEN MCCracken, ARCHITECT



Prototype :	6E-AV
Prototype Issue Date:	09.2022
Design Bulletin Updates:	INCLUDED
Date Issued:	09.2022
Bulletin Number:	V 2022 - 1.0

PERMIT SET

ISSUES		
1	12.07.22	SITE PLAN SUBMITTAL
2	01.16.23	2ND SITE PLAN SUBMITTAL
3	03.27.23	3RD SITE PLAN SUBMITTAL
4		
5		
6		
REVISION		
1		
2		
3		
4		
5		
6		

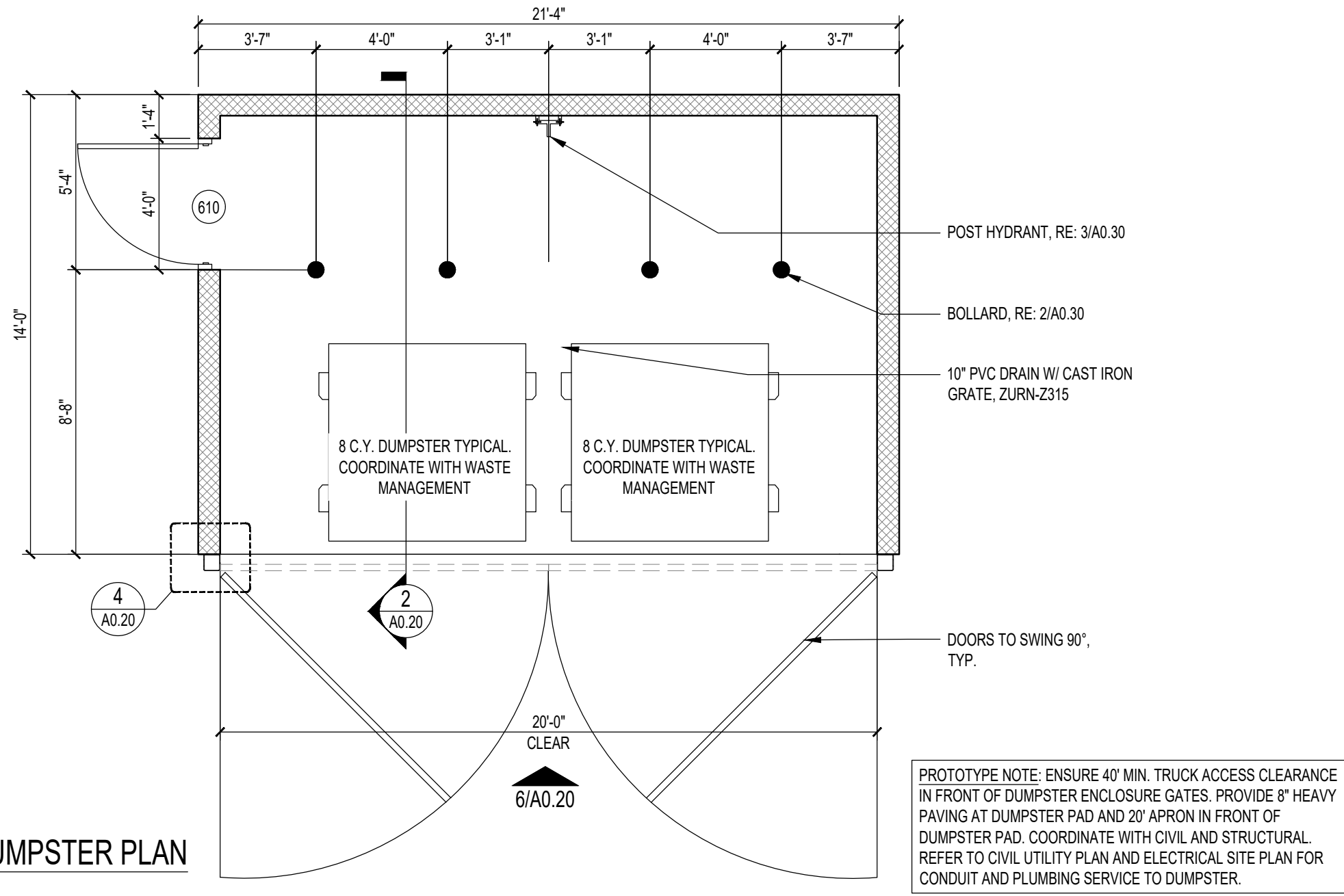
Sheet Title:

SITE DETAILS

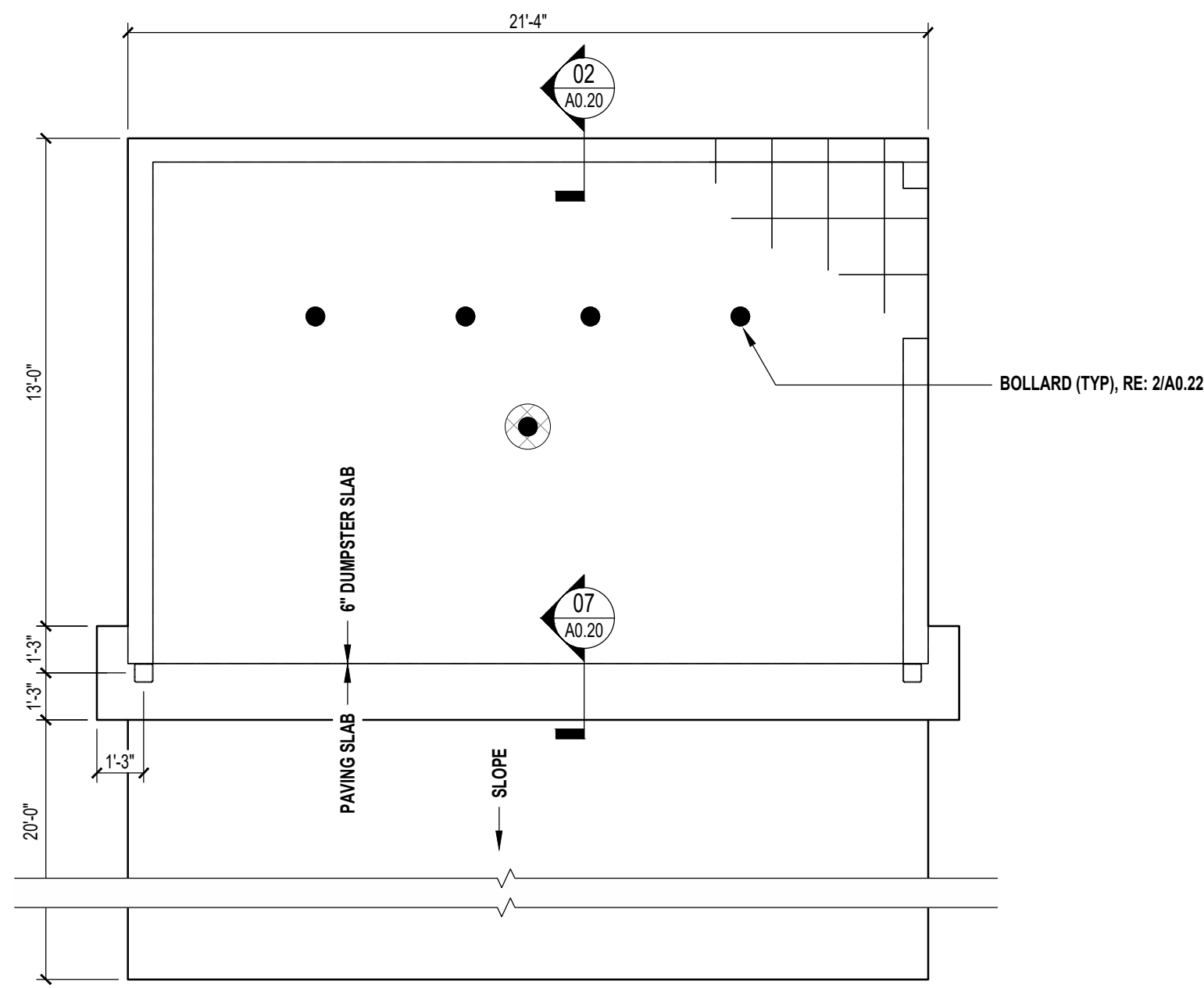
Date:	03.27.2023
Project Number:	RAC22014.0
Drawn By:	KTA

Sheet Number:

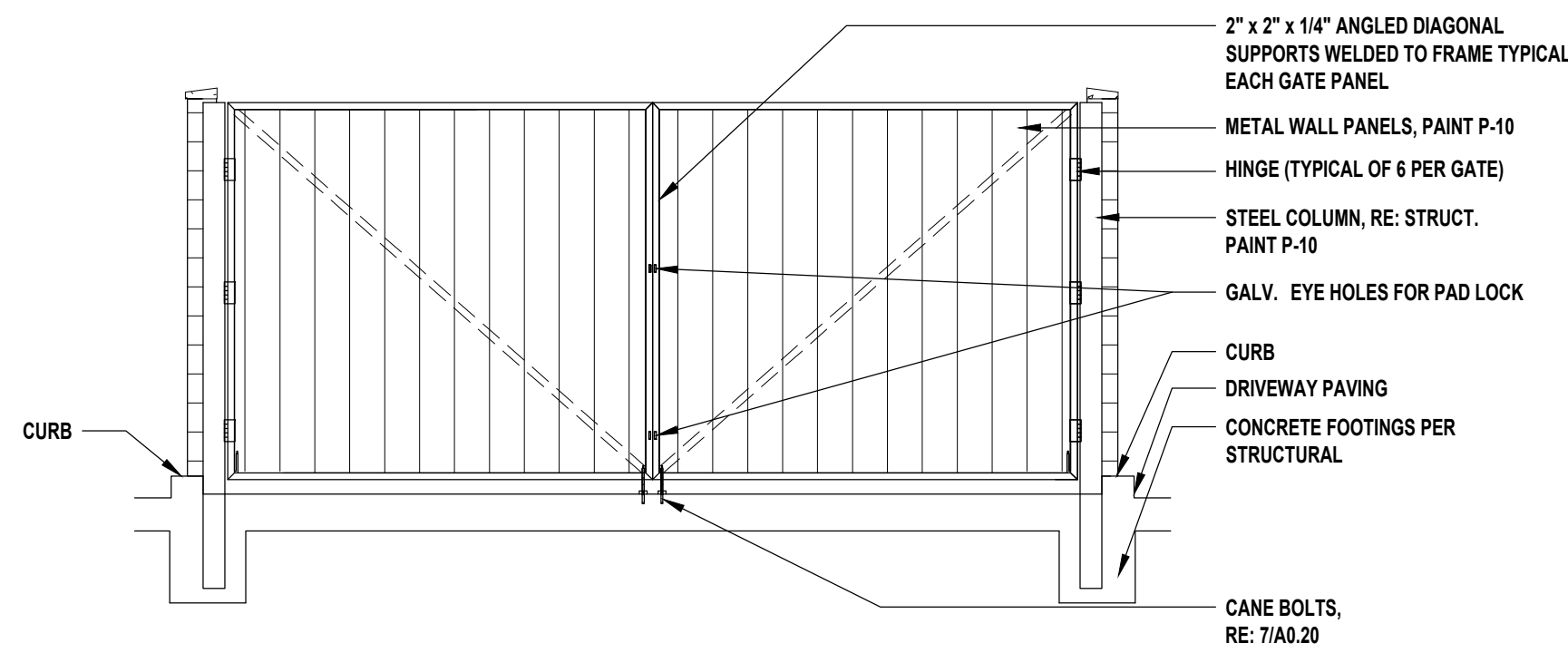
A0.30



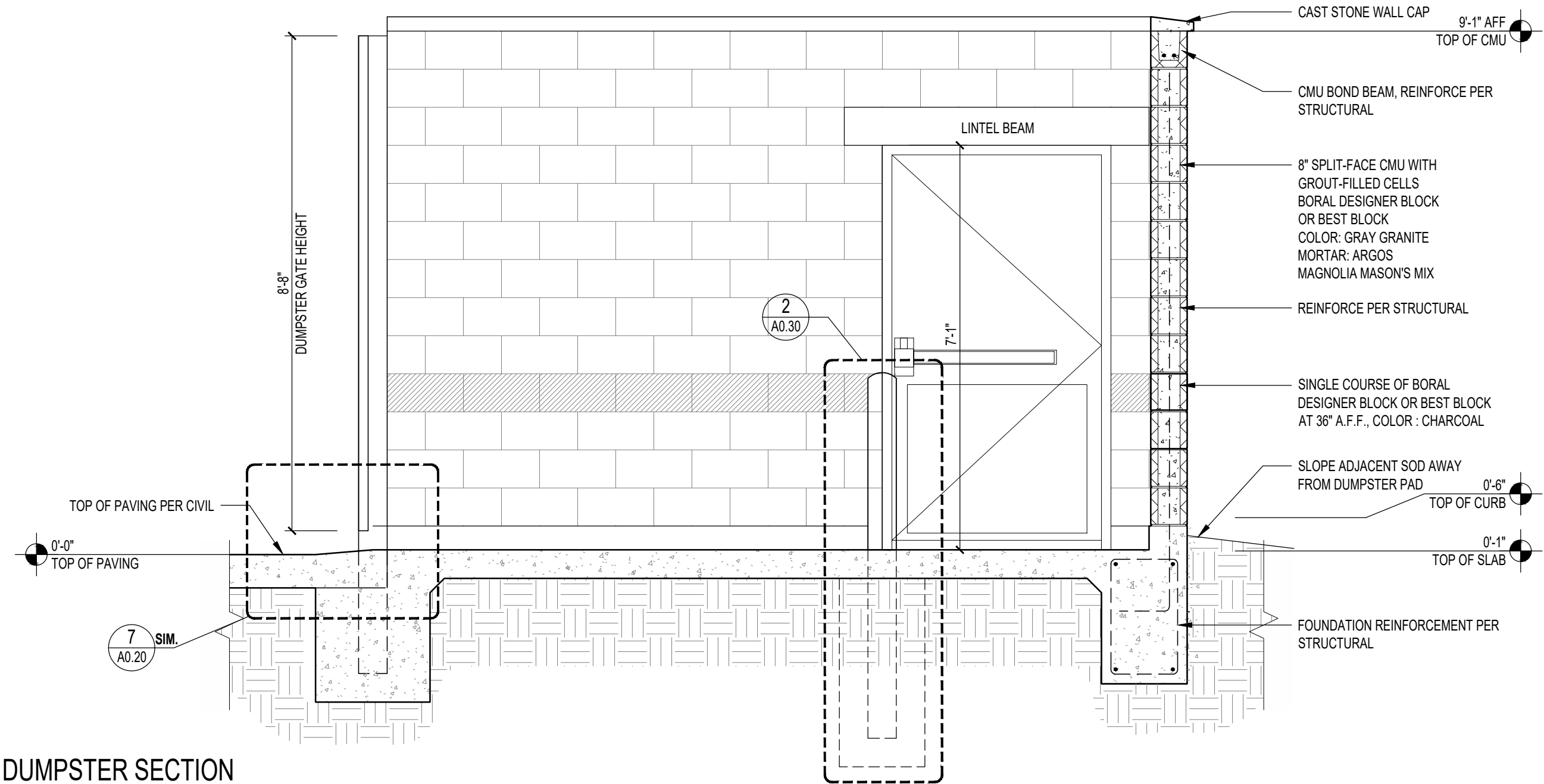
1 STANDARD DUMPSTER PLAN
1/4" = 1'-0"



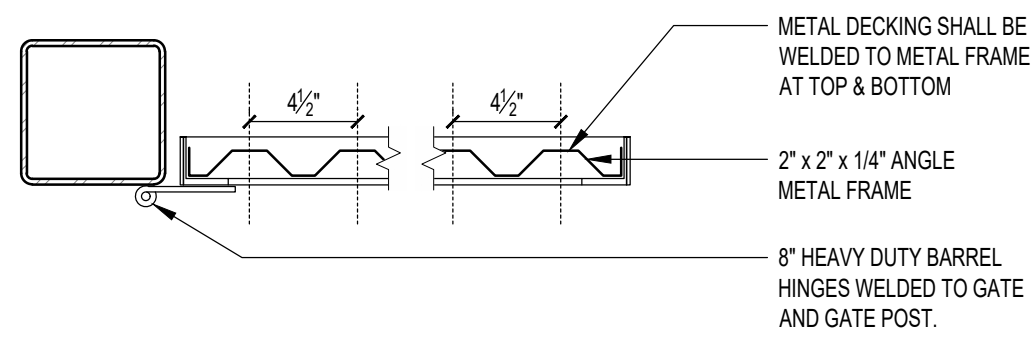
3 FOUNDATION PLAN
1/4" = 1'-0"



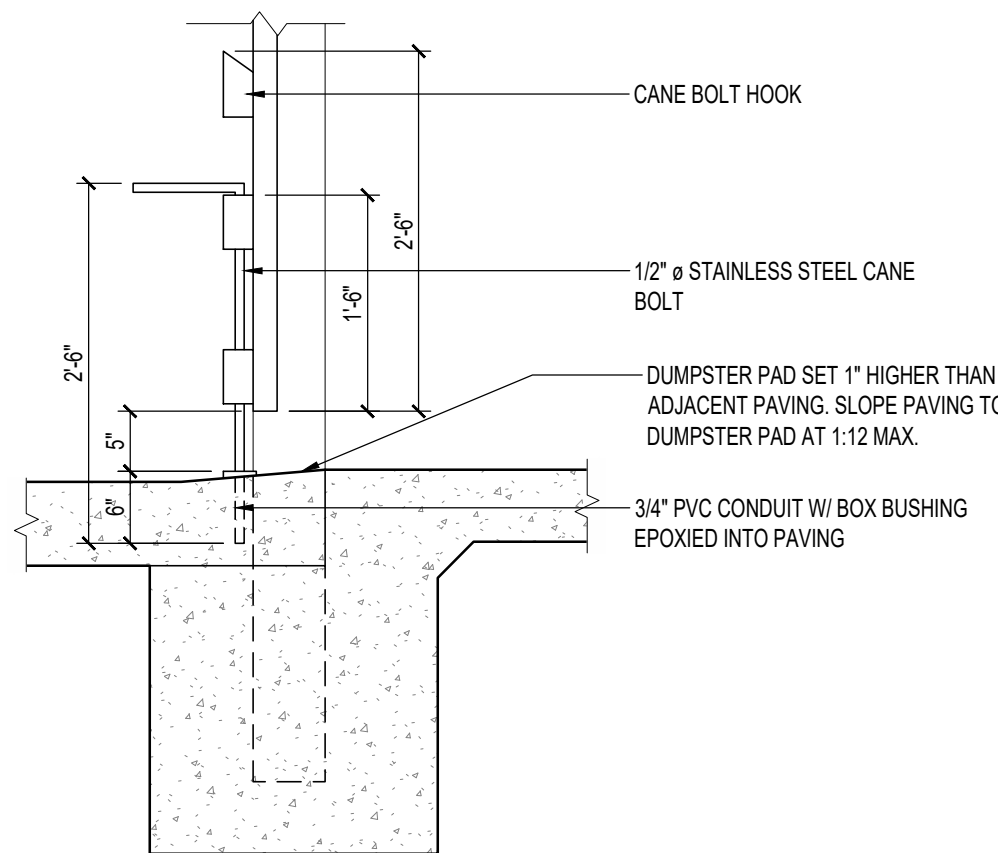
6 DUMPSTER ENCLOSURE
1/4" = 1'-0"



2 DUMPSTER SECTION
1/2" = 1'-0"



4 DUMPSTER GATE DETAIL
1 1/2" = 1'-0"



7 DUMPSTER GATE THRESHOLD DETAIL
3/4" = 1'-0"

5 NOT USED
1 1/2" = 1'-0"



Restaurant Support Office
6800 Bishop Road, Plano, TX 75024
Tele: 972-769-3100 Fax: 972-769-3101

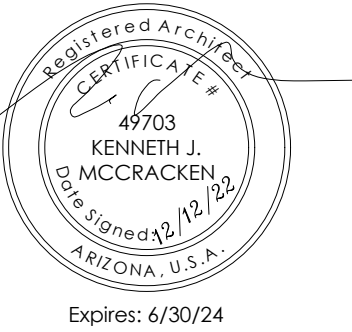
Store: **2165 N POWER RD.
MESA, AZ 85215**
Restaurant #C0926
P6E-AV



76 E. MITCHELL DR
PHOENIX, AZ 85012

CONTACT: CHUCK BENNETT
PHONE: 602-432-0596
EMAIL: CBENNETT@PMDCNC.COM

KEN MCCracken, ARCHITECT



Prototype :	6E-AV
Prototype Issue Date:	09.2022
Design Bulletin Updates:	INCLUDED
Date Issued:	09.2022
Bulletin Number:	V 2022 - 1.0

PERMIT SET

ISSUES		
1	12.07.22	SITE PLAN SUBMITTAL
2	01.16.23	2ND SITE PLAN SUBMITTAL
3	03.27.23	3RD SITE PLAN SUBMITTAL
4		
5		
6		
REVISION		
1		
2		
3		
4		
5		
6		

Sheet Title:

TRASH ENCLOSURE PLANS & DETAILS

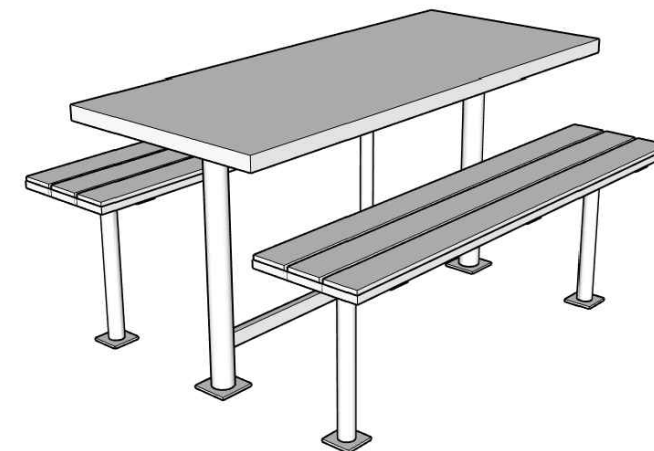
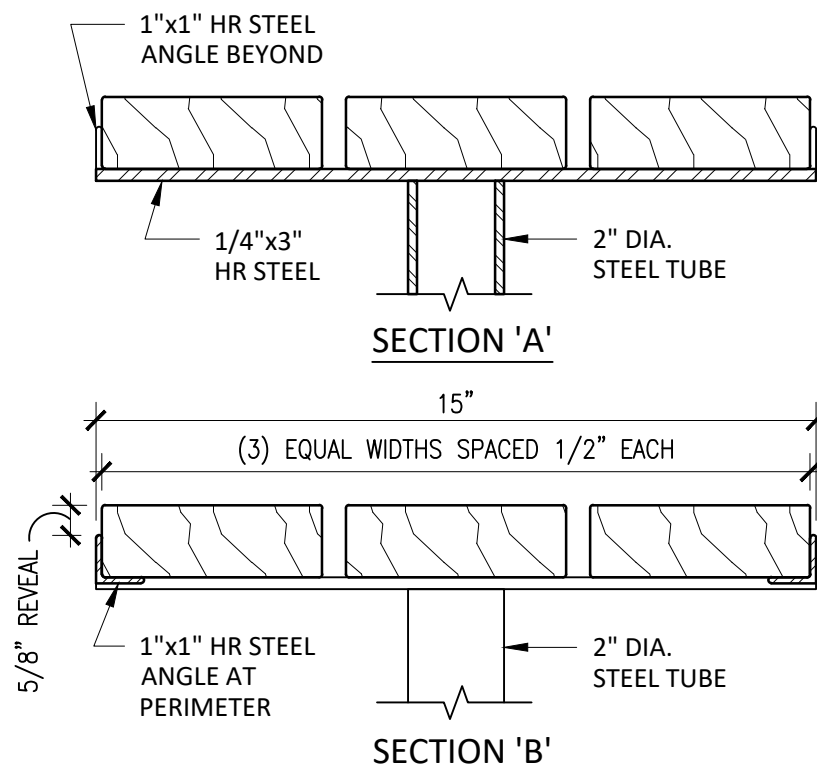
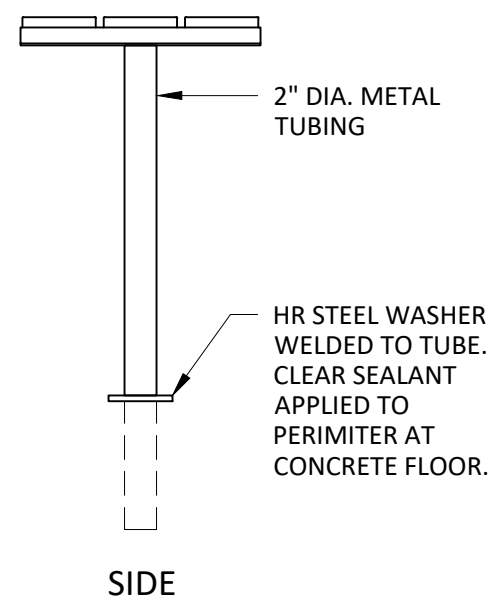
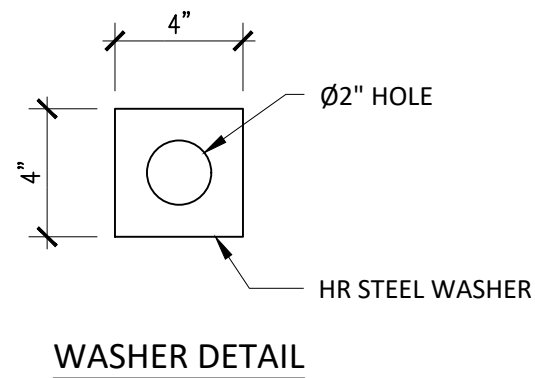
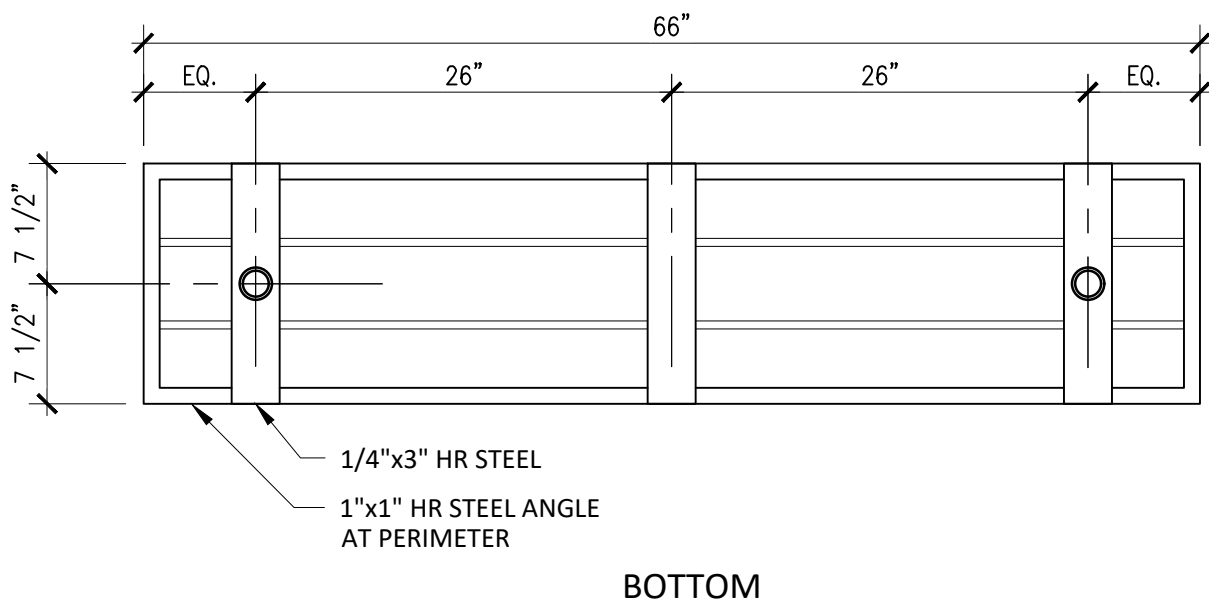
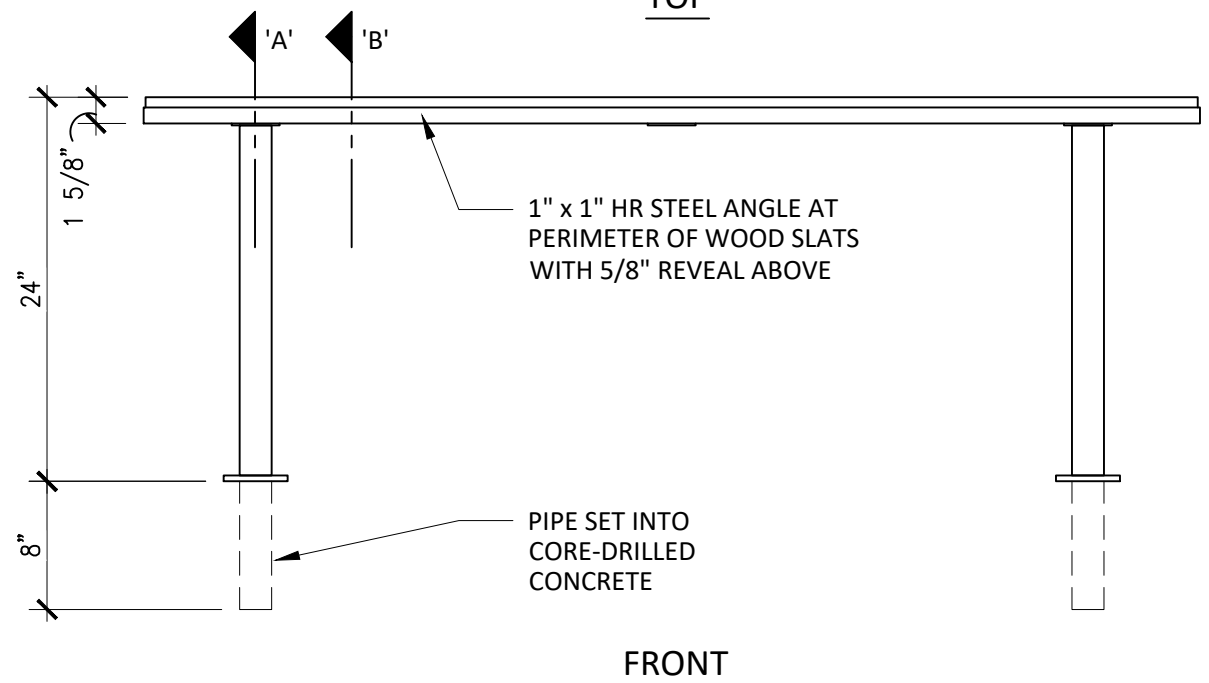
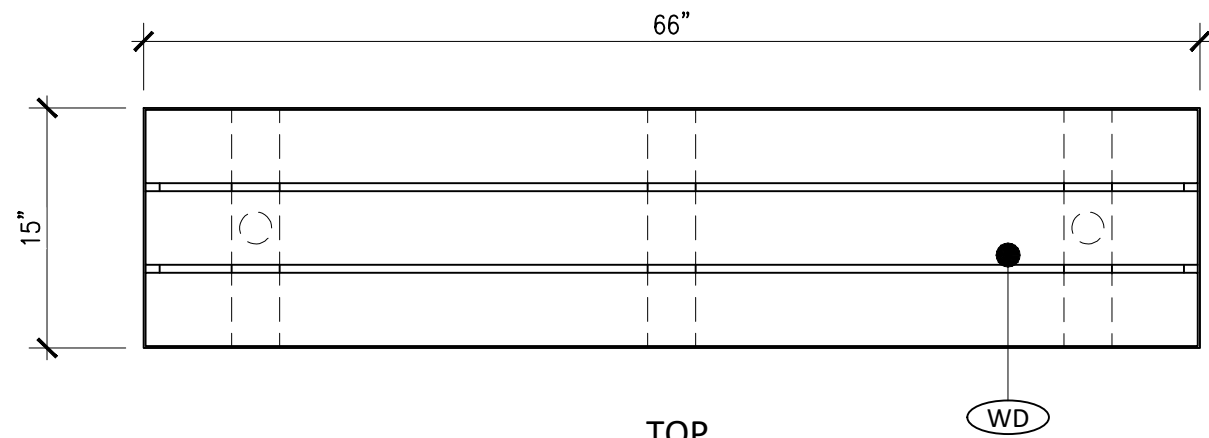
Date: 03.27.2023

Project Number: RAC22014.0

Drawn By: KTA

Sheet Number:

A0.20



FINISH SCHEDULE		
NO.	MATERIAL	FINISH
WD	CEDAR SLATS RIPPED FROM 2x6, 3 EQUAL WIDTHS.	CLEAR SATIN POLYURETHANE

NOTES:

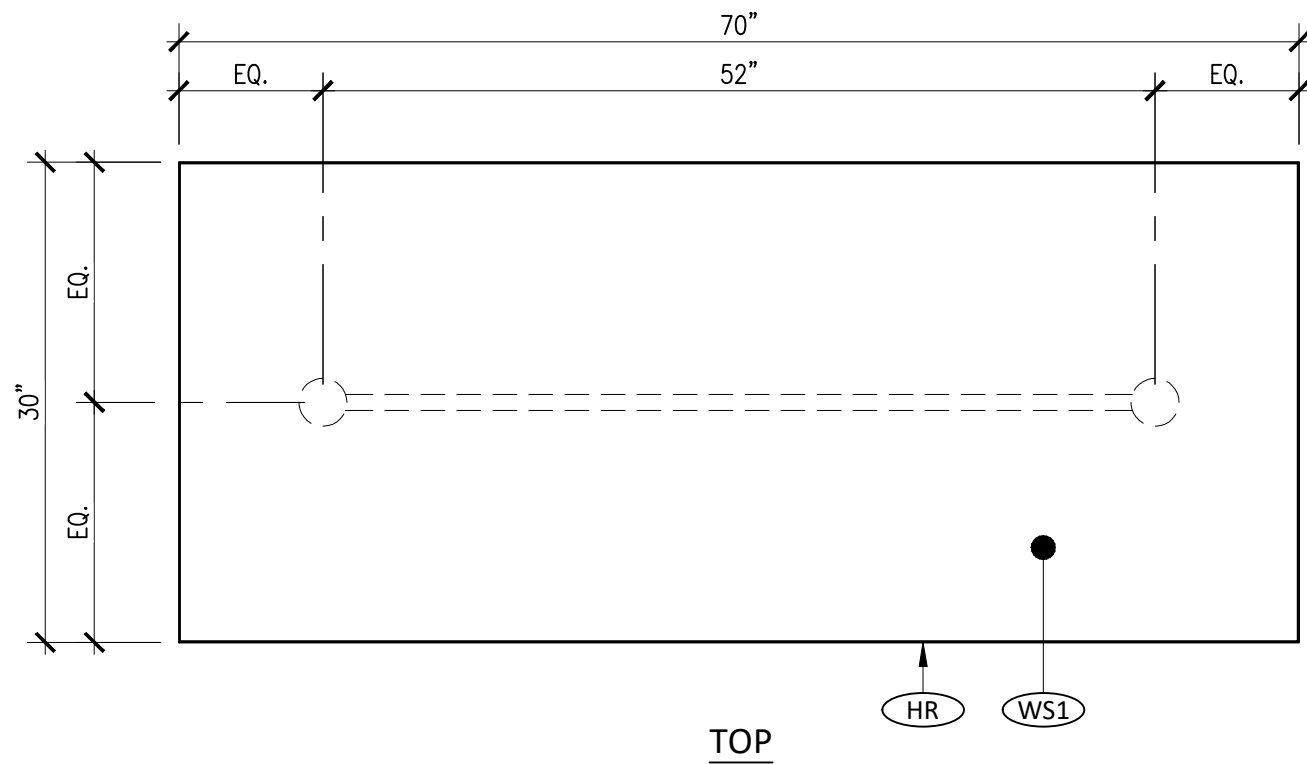
1. TOP BAND TO BE WELDED AT THE CORNERS.
2. ALL SHARP CORNERS/BURS TO BE GROUND/SANDED SMOOTH.
3. BENCHES (2) SHIP ASSEMBLED. ALL HARDWARE INCLUDED.
4. SEE JP-01 (TABLE) FOR TABLE DRAWINGS.



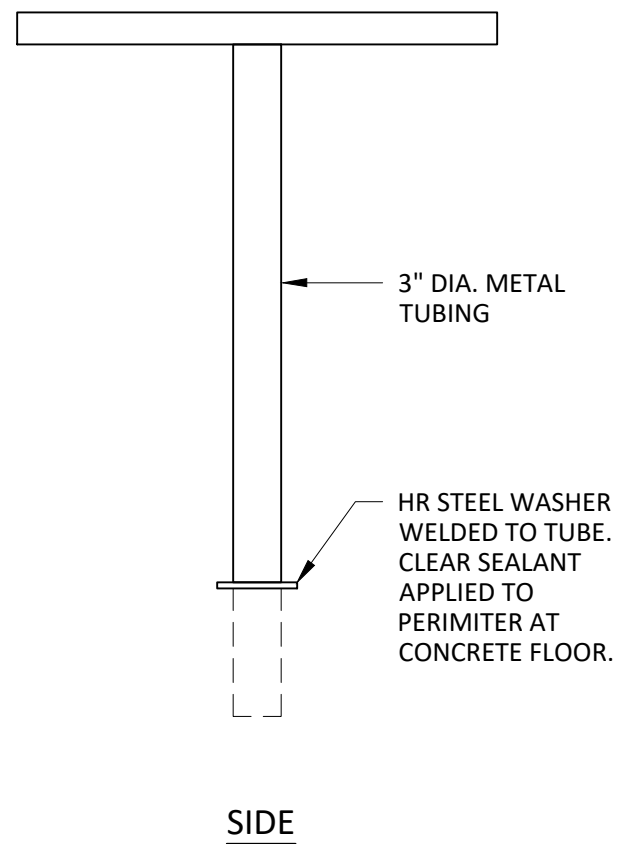
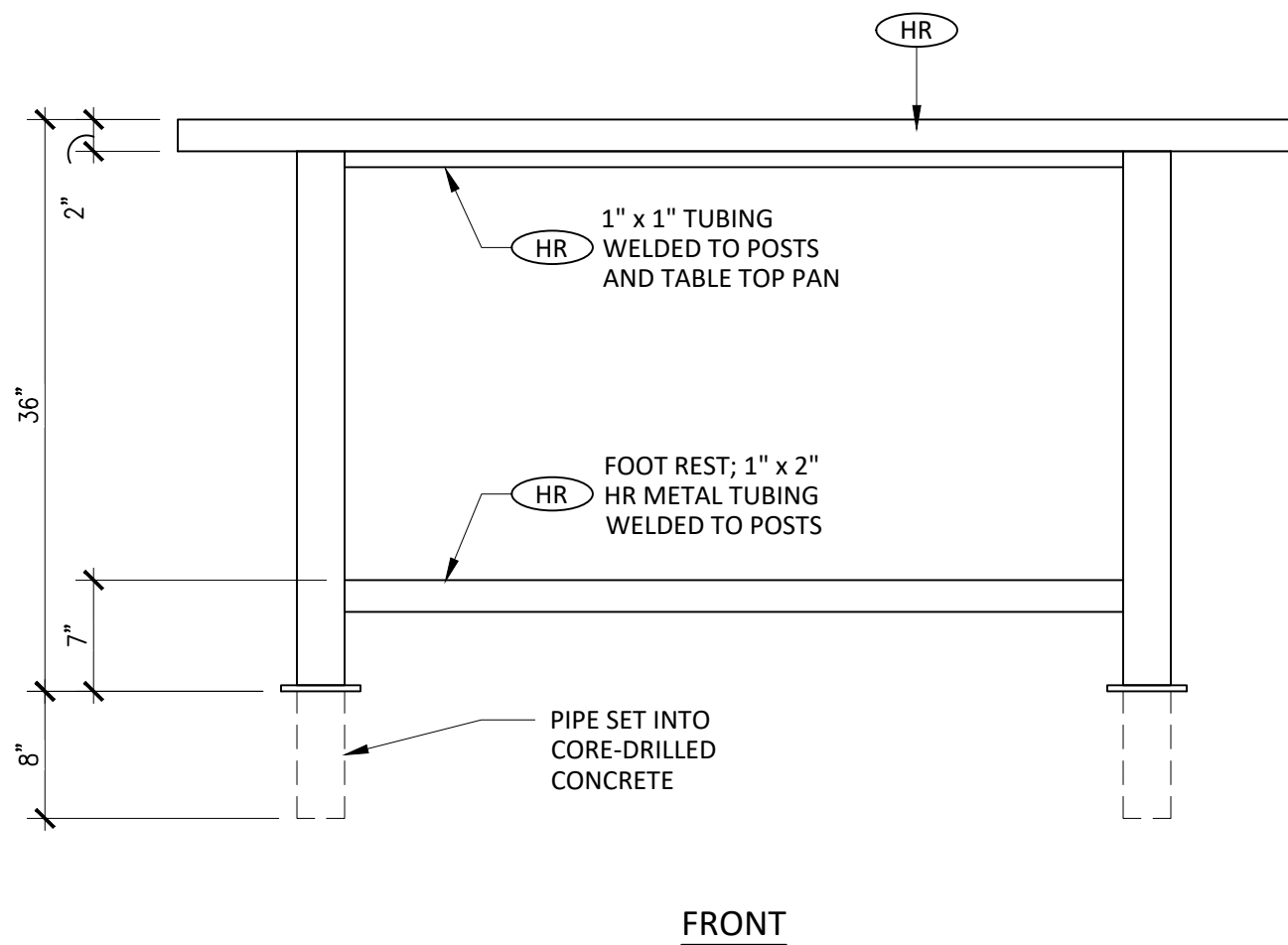
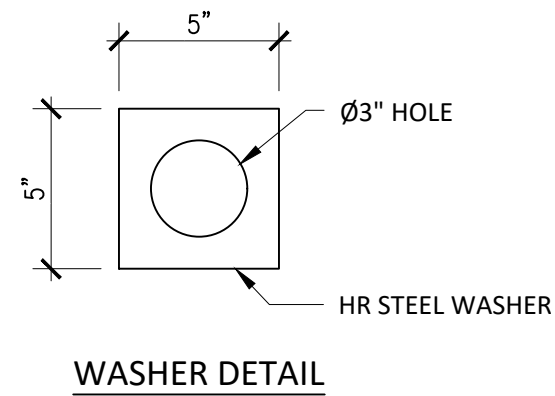
Date:
2/22/2019

Item Desc:
PATIO COMMUNITY
TABLE BENCHES, CORE
DRILLED

Item ID:
JP-01 (BENCH)



NOTE: THE DESIGN OF THE TABLE TOP PAN IS THE RESPONSIBILITY OF THE VENDOR, INCLUDING STRUCTURAL SUPPORT AND REINFORCEMENT



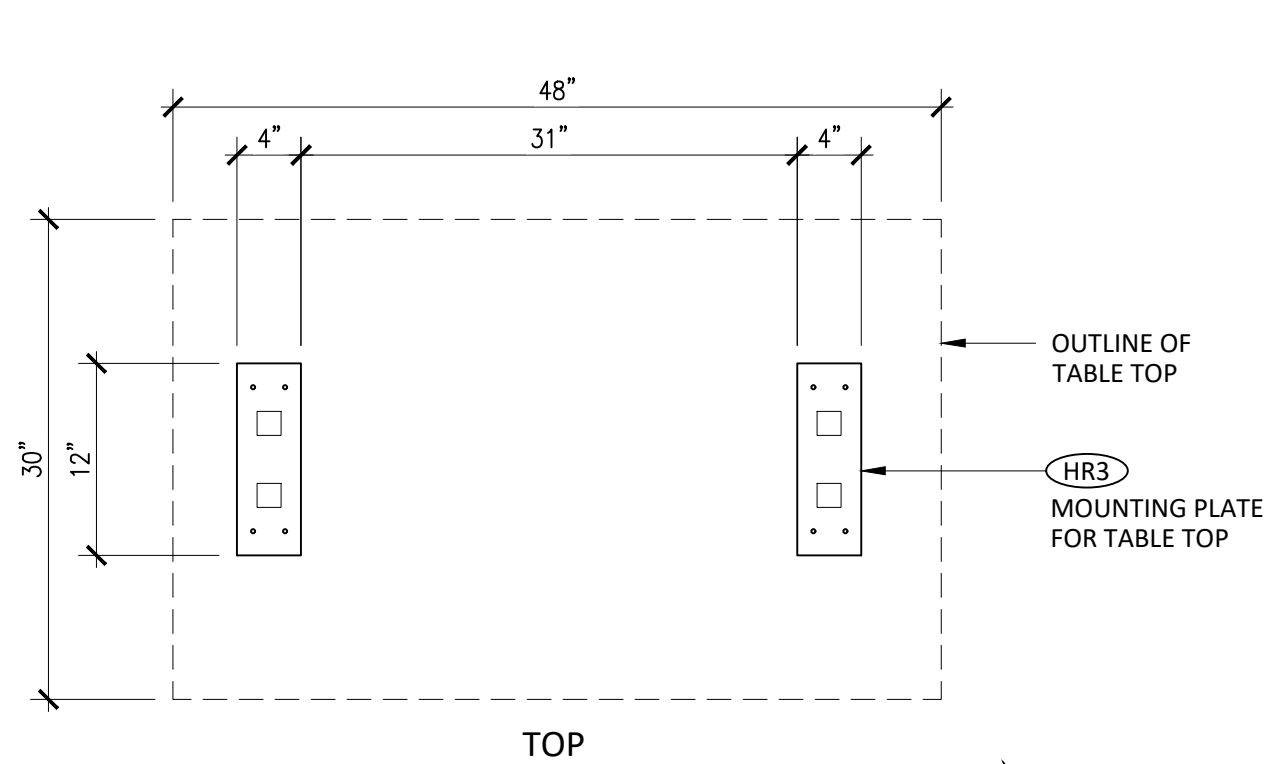
FINISH SCHEDULE		
NO.	MATERIAL	FINISH
HR	HOT ROLLED STEEL	CLEAR MATTE POWDER COAT
WS1	CONCRETE	PER SAMPLE BY OTHERS

- NOTES:
1. TOP - CONCRETE, POURED ON SITE BY OTHERS.
 2. TOP BAND TO BE WELDED AT THE CORNERS.
 3. ALL SHARP CORNERS/BURS TO BE GROUND/SANDED SMOOTH.
 4. TABLE BASE & PAN SHIPS ASSEMBLED. ALL HARDWARE INCLUDED.
 5. SEE JP-01 (BENCH) FOR BENCH DRAWINGS.

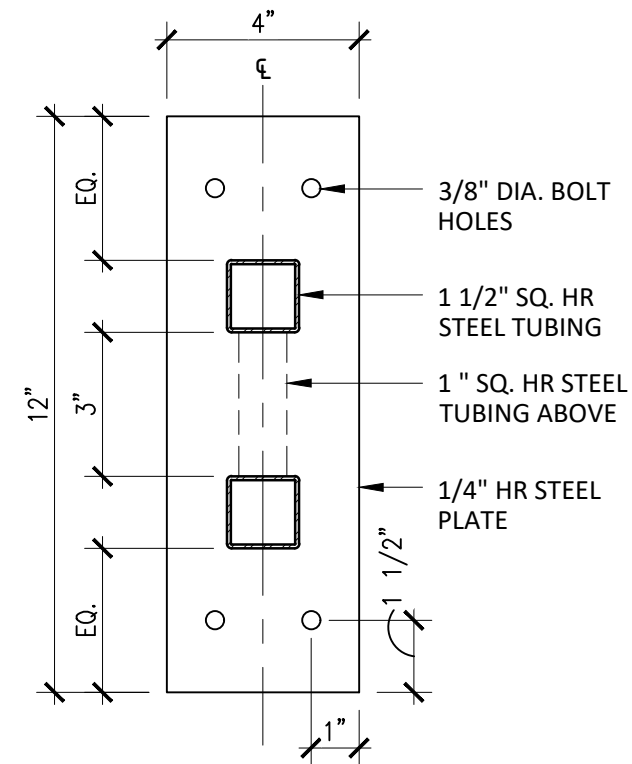
Date:
2/22/2019

Item Desc:
PATIO COMMUNITY
TABLE, 70"x30", CORE
DRILLED

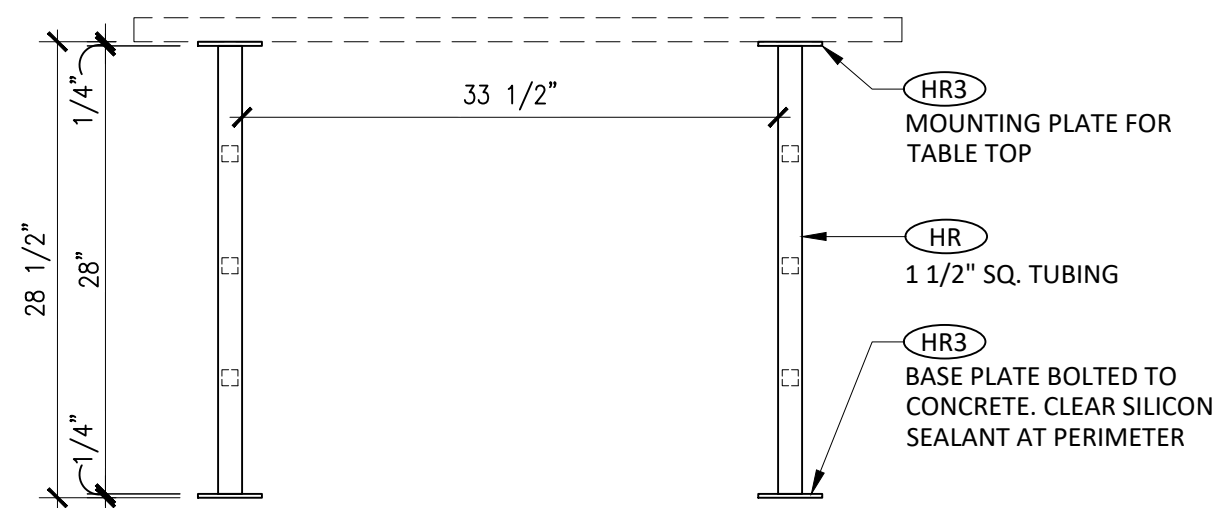
Item ID:
JP-01 (TABLE)



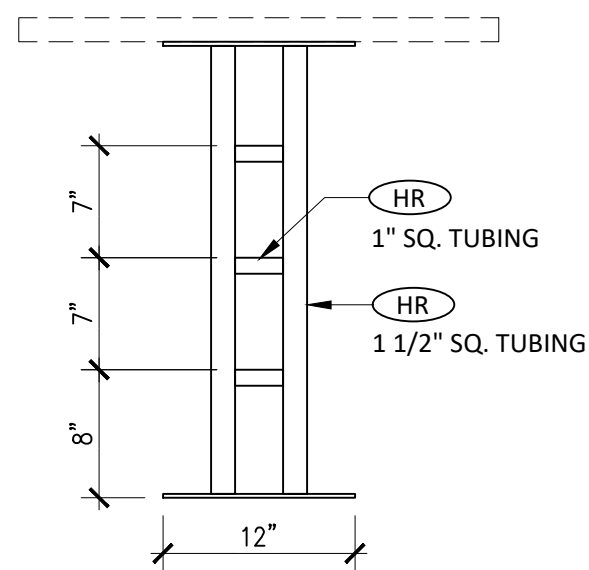
TOP



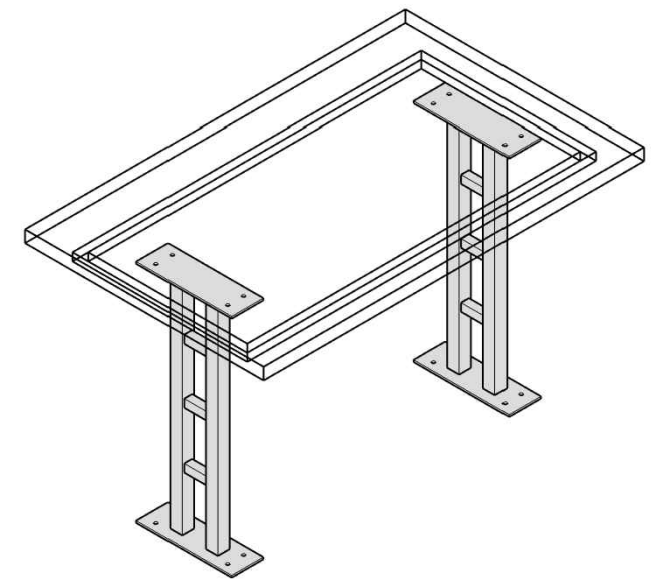
BASE PLATE DETAIL



FRONT



SIDE



FINISH SCHEDULE

NO.	MATERIAL	FINISH
HR	HOT ROLLED STEEL TUBE	CLEAR COAT MATTE
HR3	1/4" HOT ROLLED STEEL, LASER CUT/PRESS BRAKE FORMED	CLEAR COAT MATTE

NOTES:

- TABLE BASE MIG WELDED.
- ALL SHARP CORNERS/BURS TO BE GROUND/SANDED SMOOTH.
- TABLE BASE SHIPS WITH TABLE TOP. ALL HARDWARE INCLUDED.



Date:

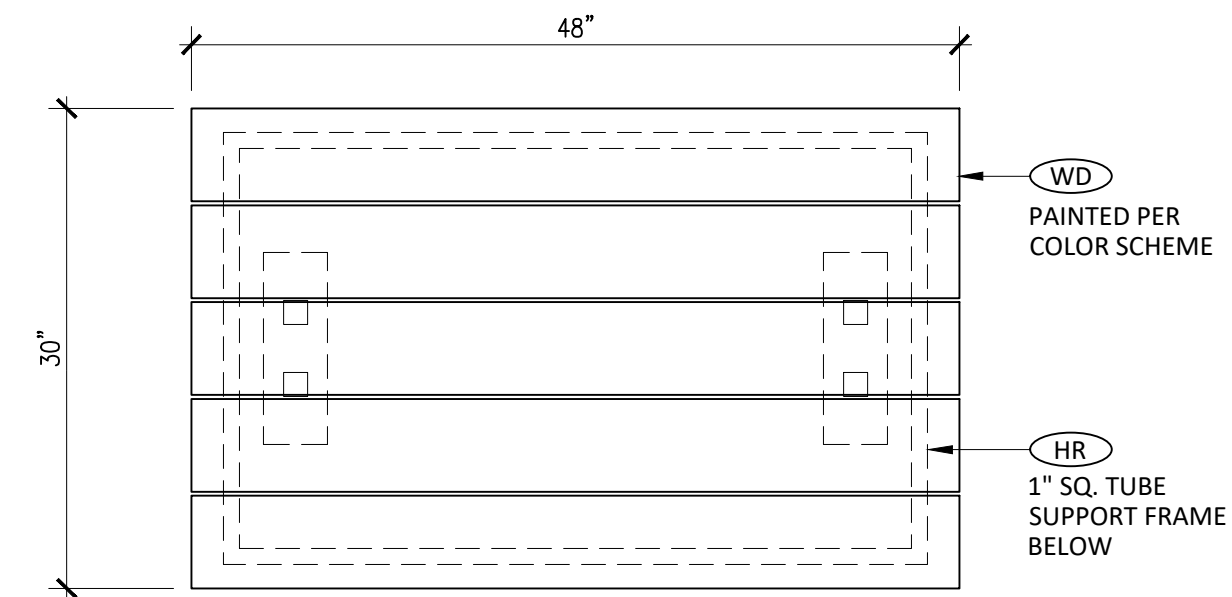
2/22/2019

Item Desc:

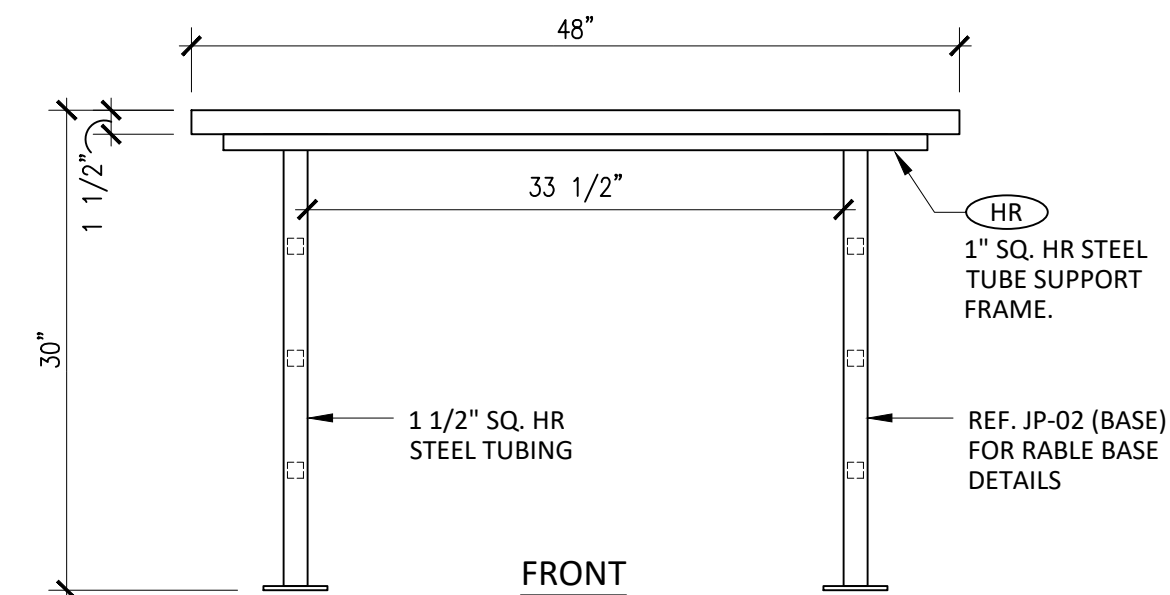
PATIO TABLE BASE, 30x45, 4-TOP ADA

Item ID:

JP-02 (BASE)



TOP



FRONT

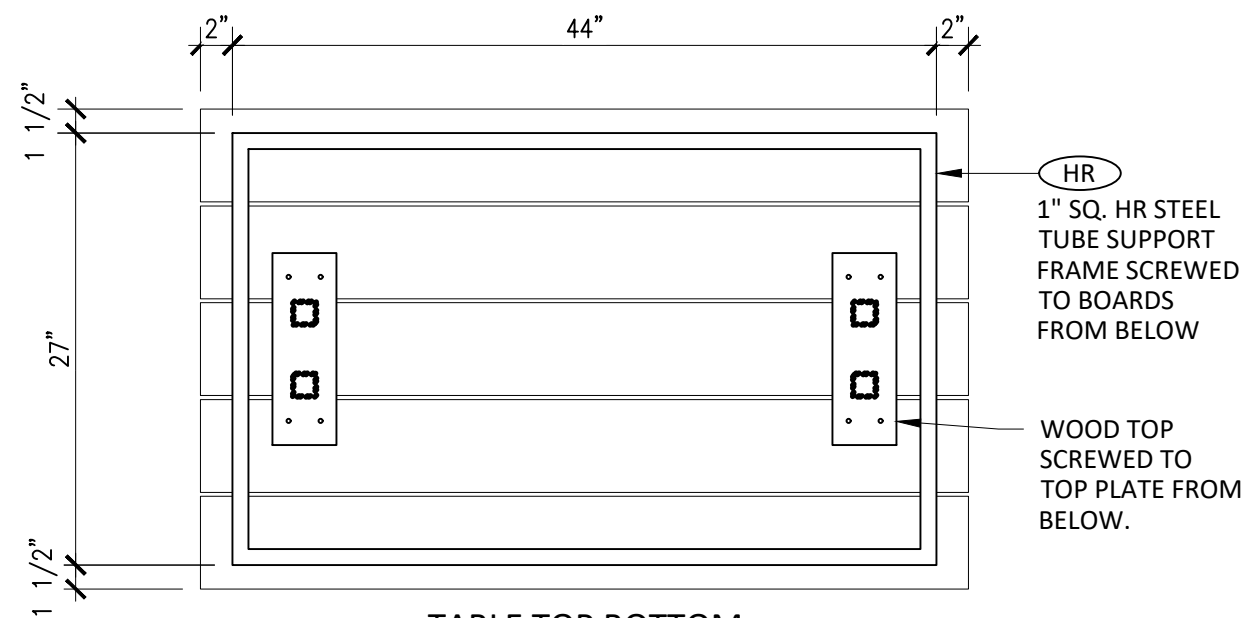
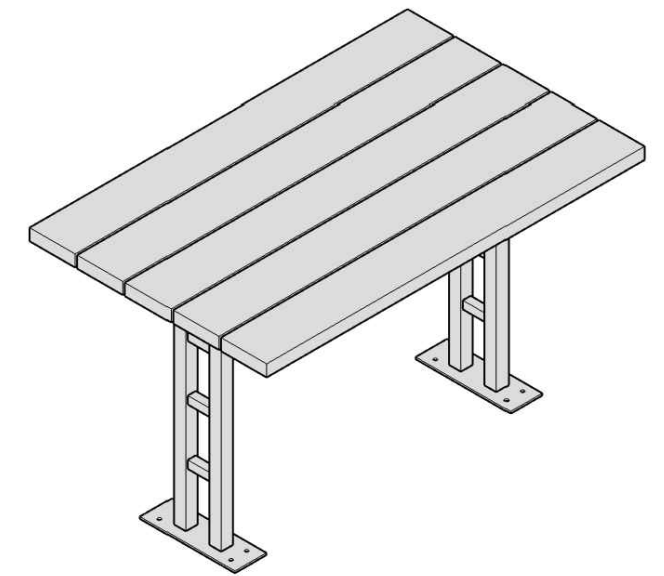
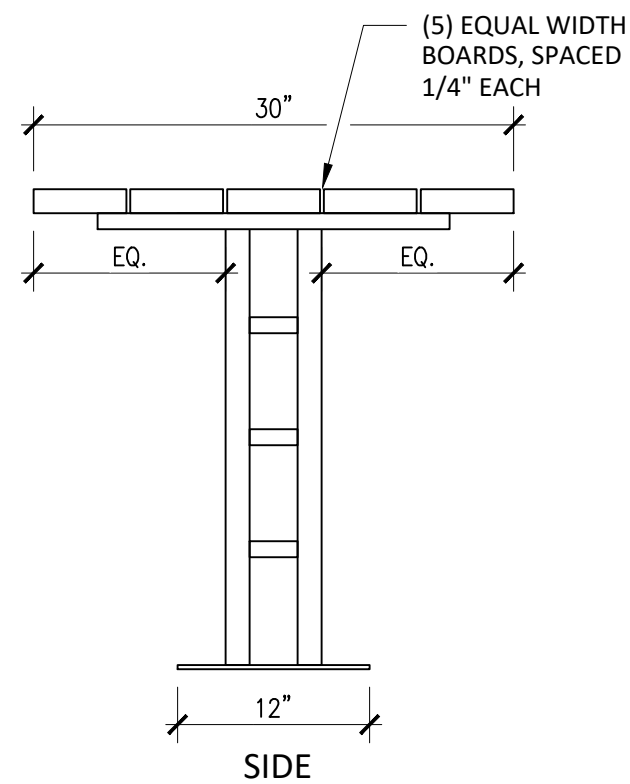


TABLE TOP BOTTOM



FINISH SCHEDULE

NO.	MATERIAL	FINISH
WD	SPRUCE, RIPPED TO WIDTH	PAINT PER COLOR SCHEME
HR	HOT ROLLED STEEL	CLEAR COAT MATTE

NOTES:

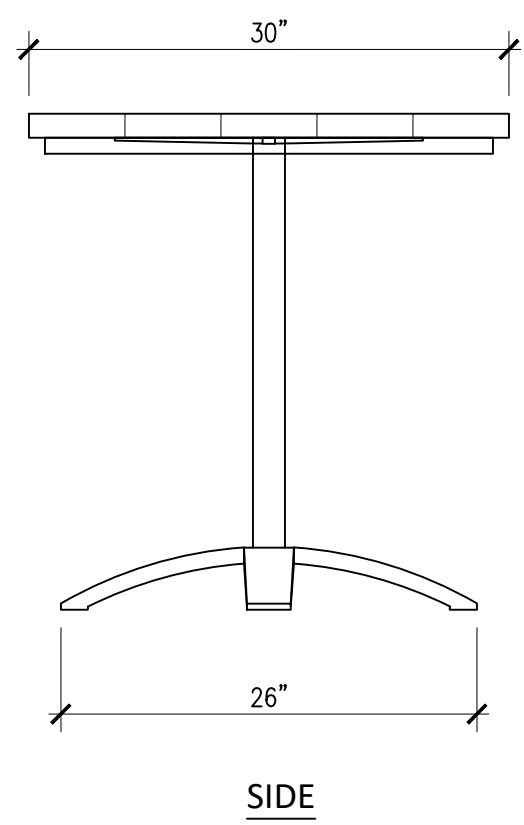
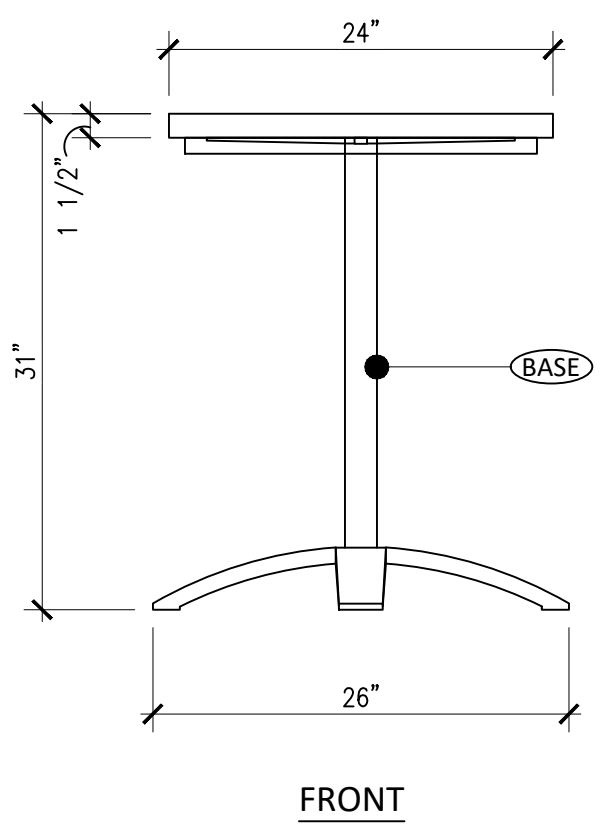
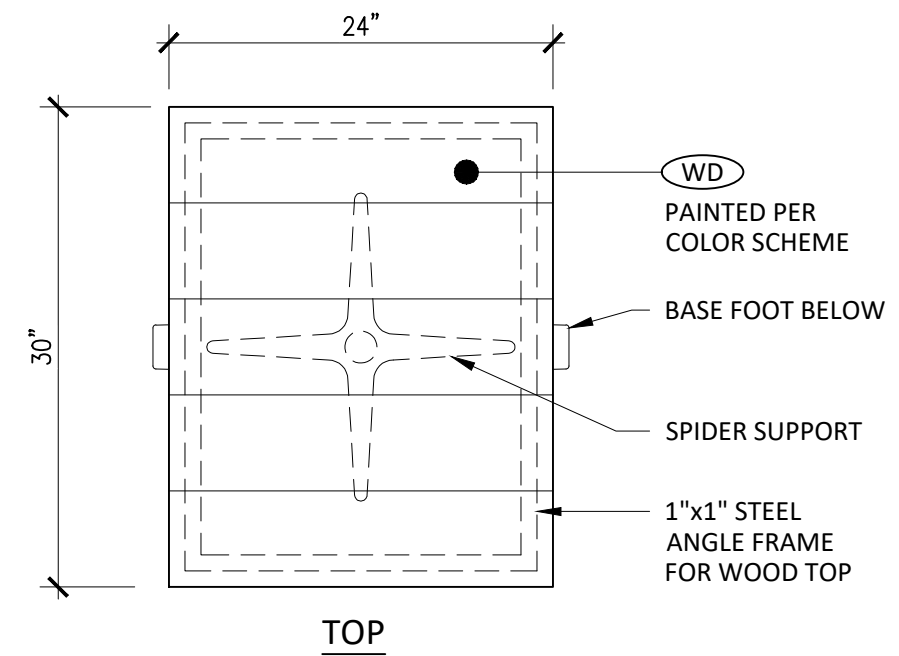
- TABLE TOP FRAME MIG WELDED AT CORNERS.
- ALL SHARP CORNERS/BURS TO BE GROUND/SANDED SMOOTH.
- WOOD TOP - EASE ALL EDGES AND CORNERS
- TABLE SHIPS DISASSEMBLED. ALL HARDWARE INCLUDED.



Date:
2/22/2019

Item Desc:
PATIO TABLE TOP, 30x45,
4-TOP ADA (WOOD PER
COLOR SCHEME)

Item ID:
JP-02 (TABLE)



FINISH SCHEDULE		
NO.	MATERIAL	FINISH
WD	SPRUCE, RIPPED TO WIDTH	PAINTED PER COLOR SCHEME
BASE	CAST ALUMINUM BASE EMU - ZAK #1361	24 ANTIQUE BLACK

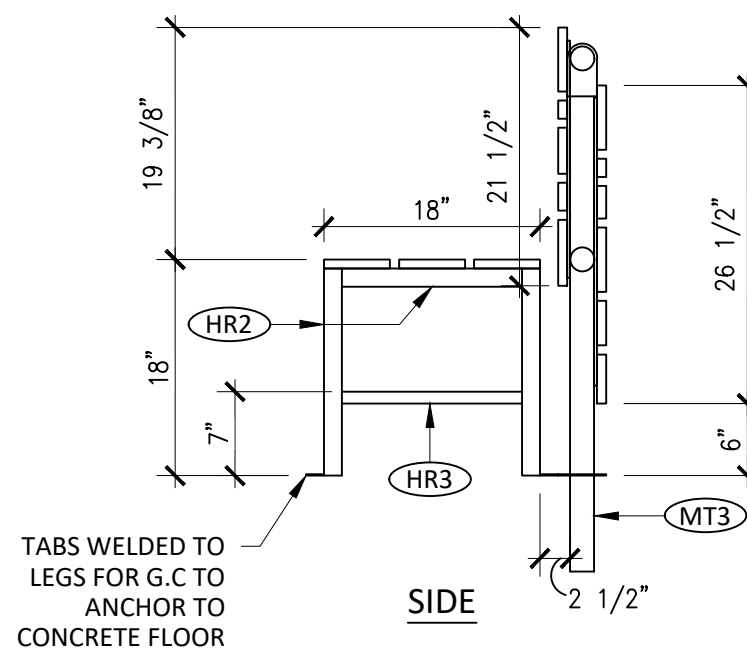
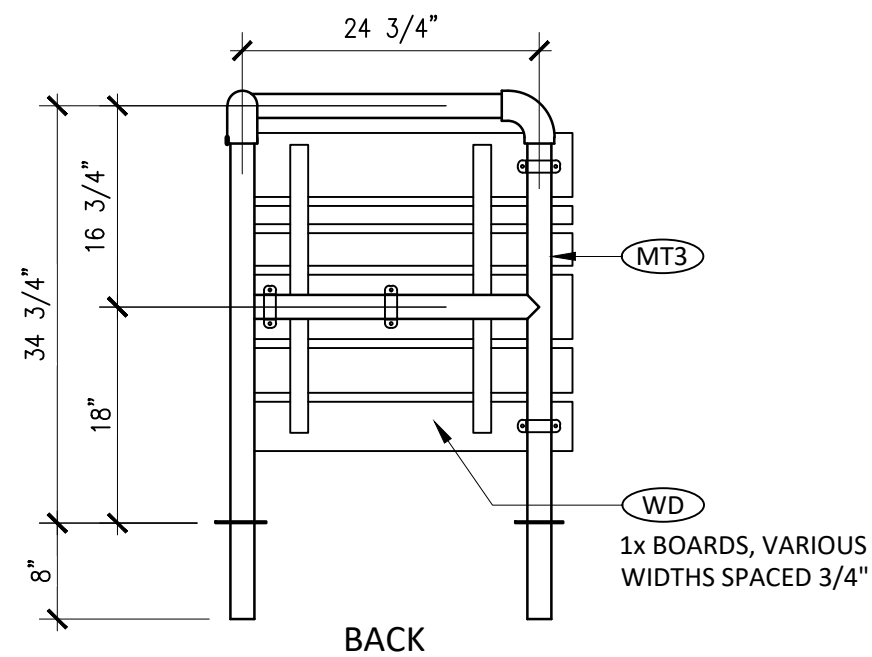
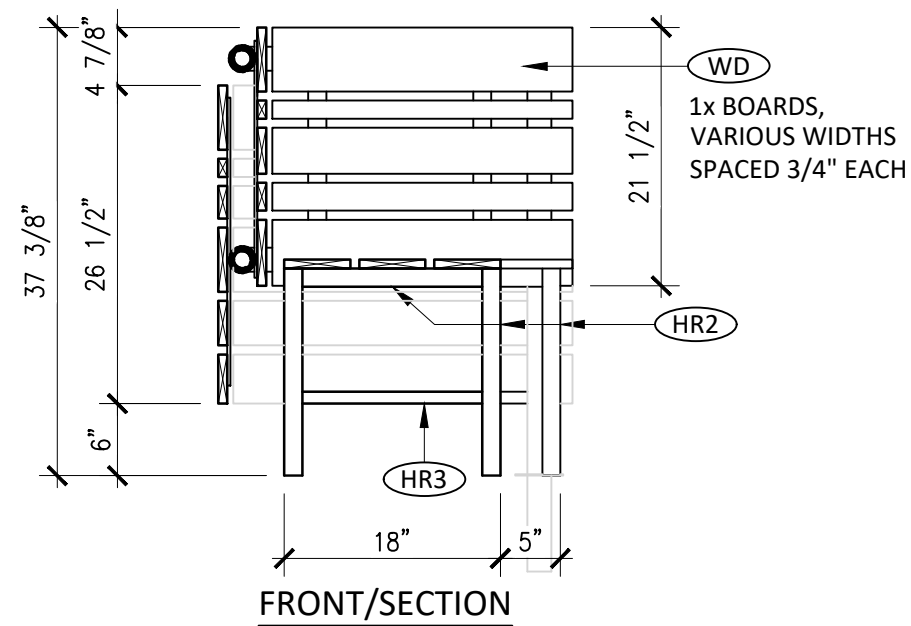
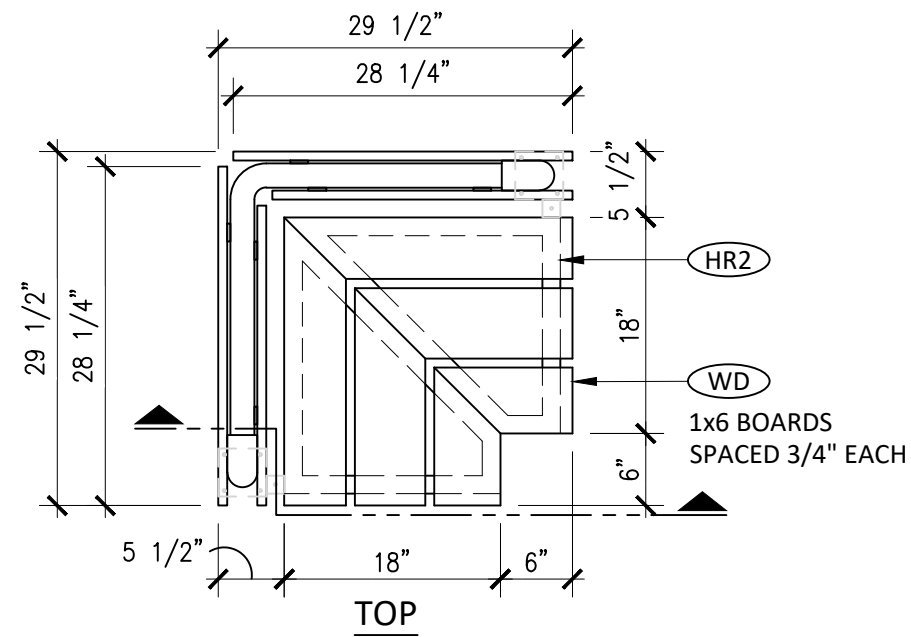
- NOTES:
- WOOD TOP - EASE ALL EDGES & CORNERS .
 - WOOD TOP FRAME - WELDED AT CORNERS. ALL SHARP CORNERS/BURS TO BE GROUND/SANDED SMOOTH.



Date:
03/01/2019

Item Desc:
PATIO TABLE TOP, 24x30,
2-TOP (WOOD PER COLOR
SCHEME)

Item ID:
JP-03



3D VIEW PENDING

FINISH SCHEDULE

NO.	MATERIAL	FINISH
(WD)	CEDAR 1x6	KLIMA SEAL CLEAR SATIN EXTERIOR POLY.
(MT3)	1 1/2" NPT BLACK IRON PIPE, w/ STD. ELBOWS/UNIONS. TACK WELD ALL FITTINGS	CLEAR MATTE POWDER COAT
(HR2)	1 1/2" SQ. TUBE, HOT ROLLED STEEL	CLEAR MATTE POWDER COAT
(HR3)	1" SQ. TUBE, HOT ROLLED STEEL	CLEAR MATTE POWDER COAT

NOTES:

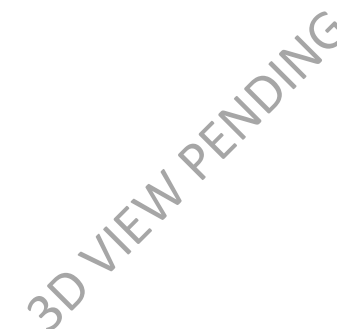
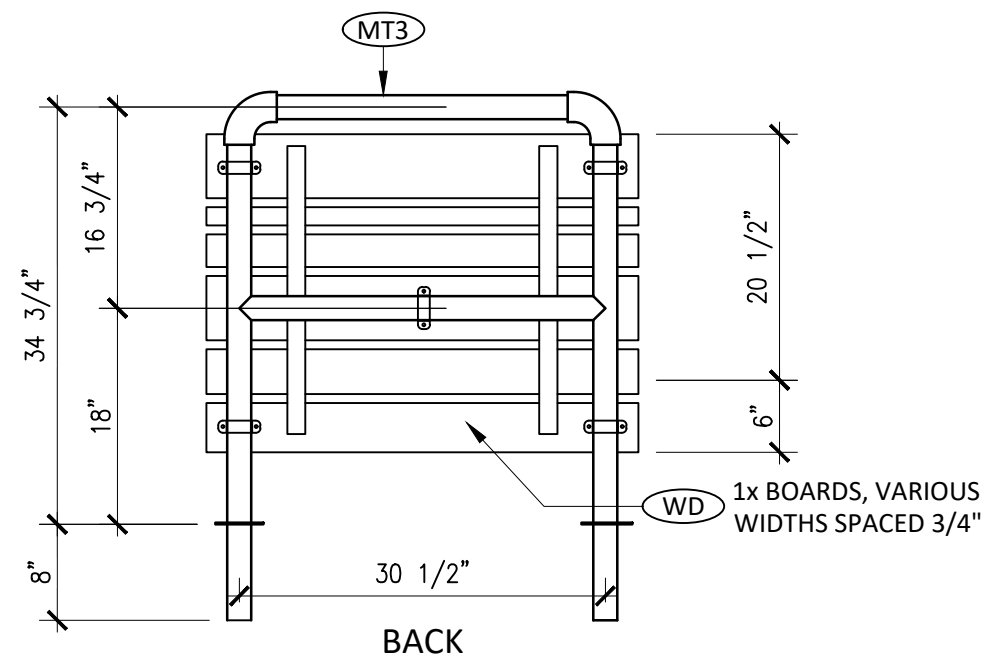
- IRON PIPE TO BE WIPED CLEAN OF ANY LETTERING BEFORE CLEAR COAT.
- ALL METAL SHALL BE FREE OF SHARP EDGES AND BURS.
- IRON PIPE AND FITTINGS TO BE TIGHTENED TO .42" PER JOINT.
- WOOD SEAT & BACK - EASE ALL CORNERS AND EDGES



Date:
03/01/2019

Item Desc:
PATIO BENCH & BACK - 24" CORNER SECTION

Item ID:
JP-05R



FINISH SCHEDULE		
NO.	MATERIAL	FINISH
WD	CEDAR 1x6	KLIMA SEAL CLEAR SATIN EXTERIOR POLY
MT3	1 1/2" NPT BLACK IRON PIPE, w/ STD. ELBOWS/UNIONS. TACK WELD ALL FITTINGS	CLEAR MATTE POWDER COAT
HR2	1 1/2" SQ. TUBE, HOT ROLLED STEEL	CLEAR MATTE POWDER COAT
HR3	1" SQ. TUBE, HOT ROLLED STEEL	CLEAR MATTE POWDER COAT

NOTES:

1. IRON PIPE TO BE WIPED
CLEAN OF ANY LETTERING
BEFORE CLEAR COAT.
2. ALL METAL SHALL BE FREE OF
SHARP EDGES AND BURS.
3. IRON PIPE AND FITTINGS TO
BE TIGHTENED TO .42" PER
JOINT.
4. WOOD SEAT & BACK - EASE
ALL CORNERS AND EDGES



Date:

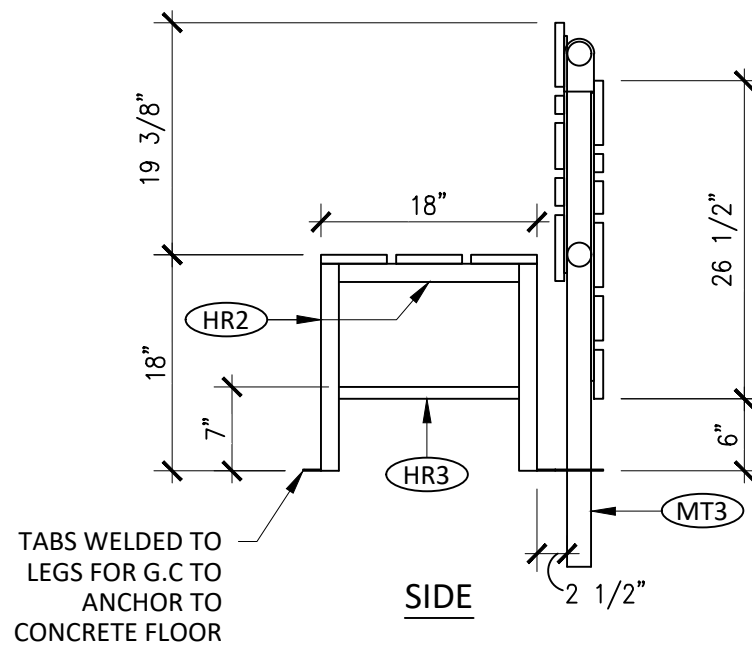
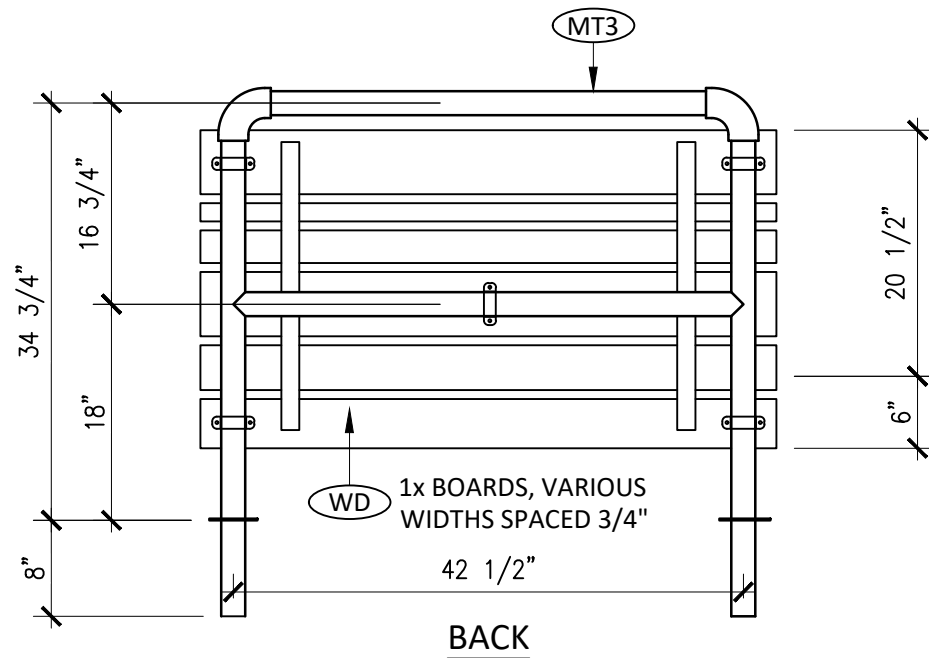
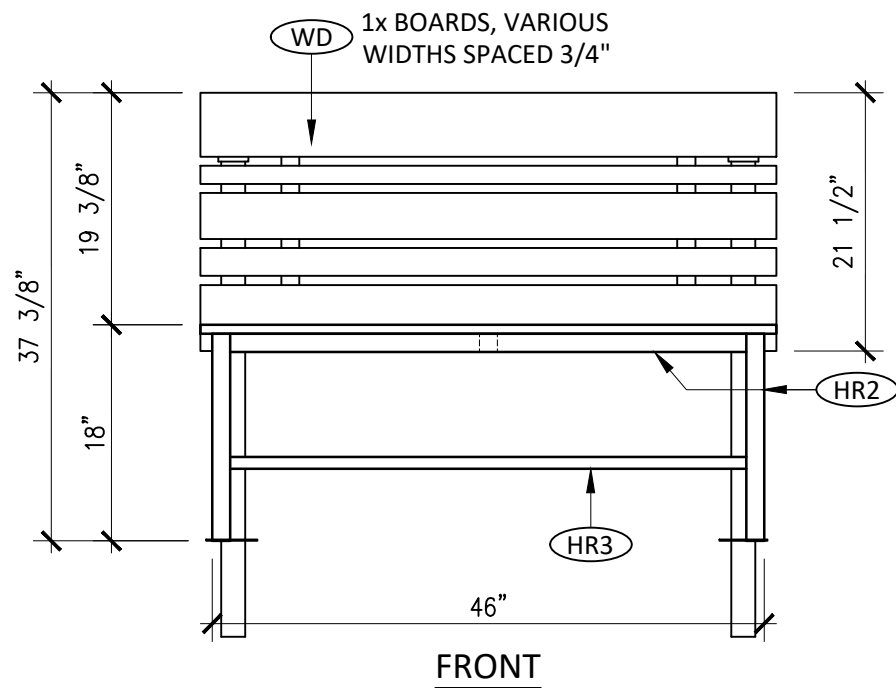
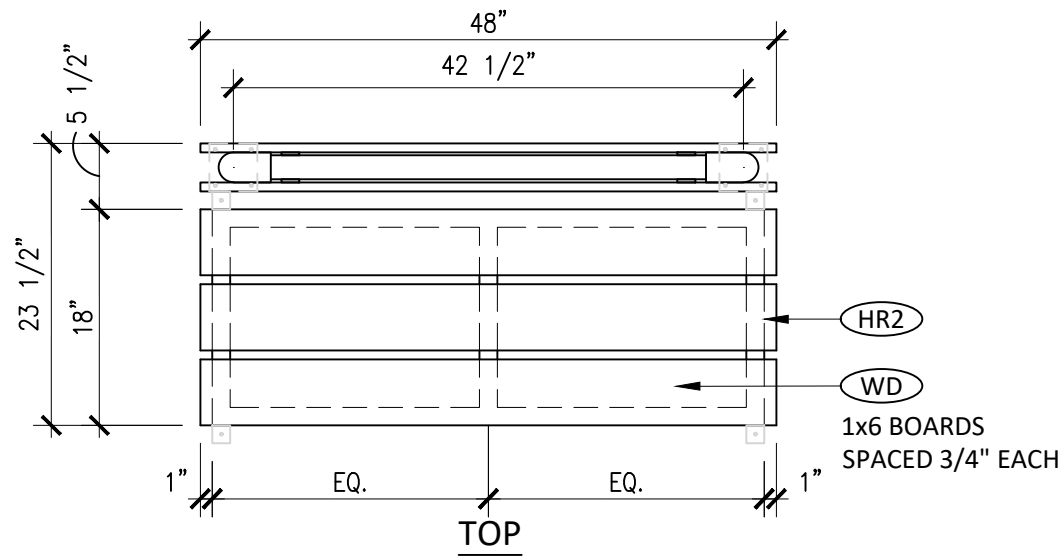
03/01/2019

[illegible]

PATIO BENCH & BACK -
36" SECTION

Item ID:

JP-06R



3D VIEW PENDING

FINISH SCHEDULE

NO.	MATERIAL	FINISH
WD	CEDAR 1x6	KLIMA SEAL CLEAR SATIN EXTERIOR POLY.
MT3	1 1/2" NPT BLACK IRON PIPE, w/ STD. ELBOWS/UNIONS. TACK WELD ALL FITTINGS	CLEAR MATTE POWDER COAT
HR2	1 1/2" SQ. TUBE, HOT ROLLED STEEL	CLEAR MATTE POWDER COAT
HR3	1" SQ. TUBE, HOT ROLLED STEEL	CLEAR MATTE POWDER COAT

NOTES:

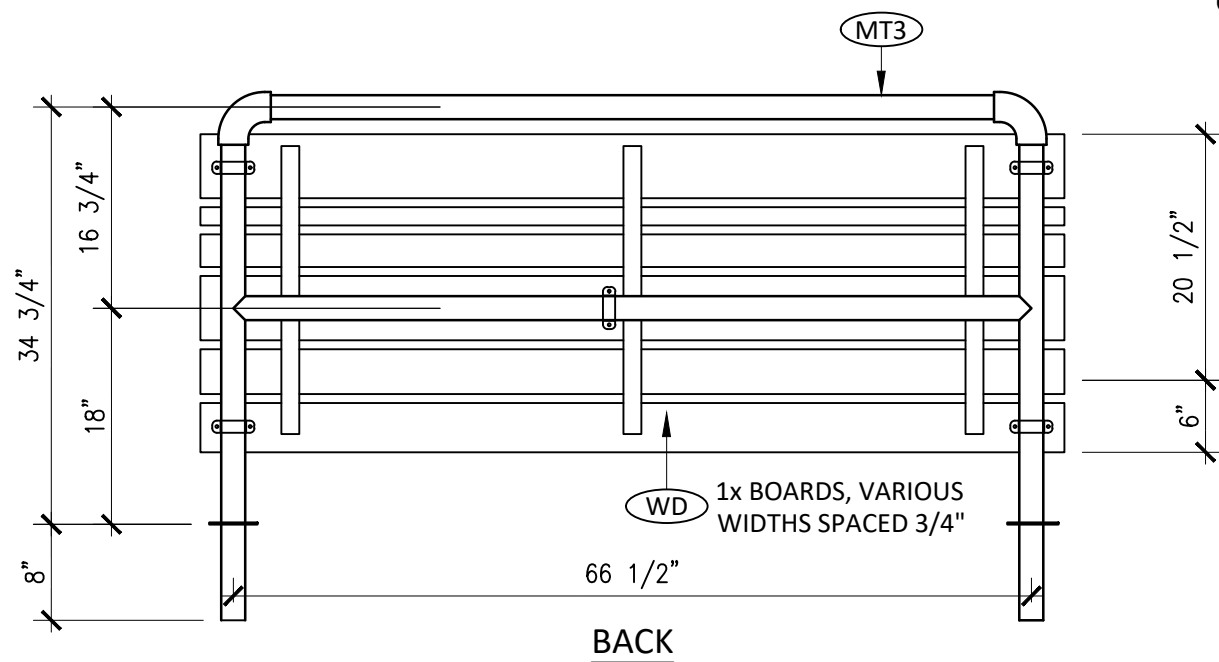
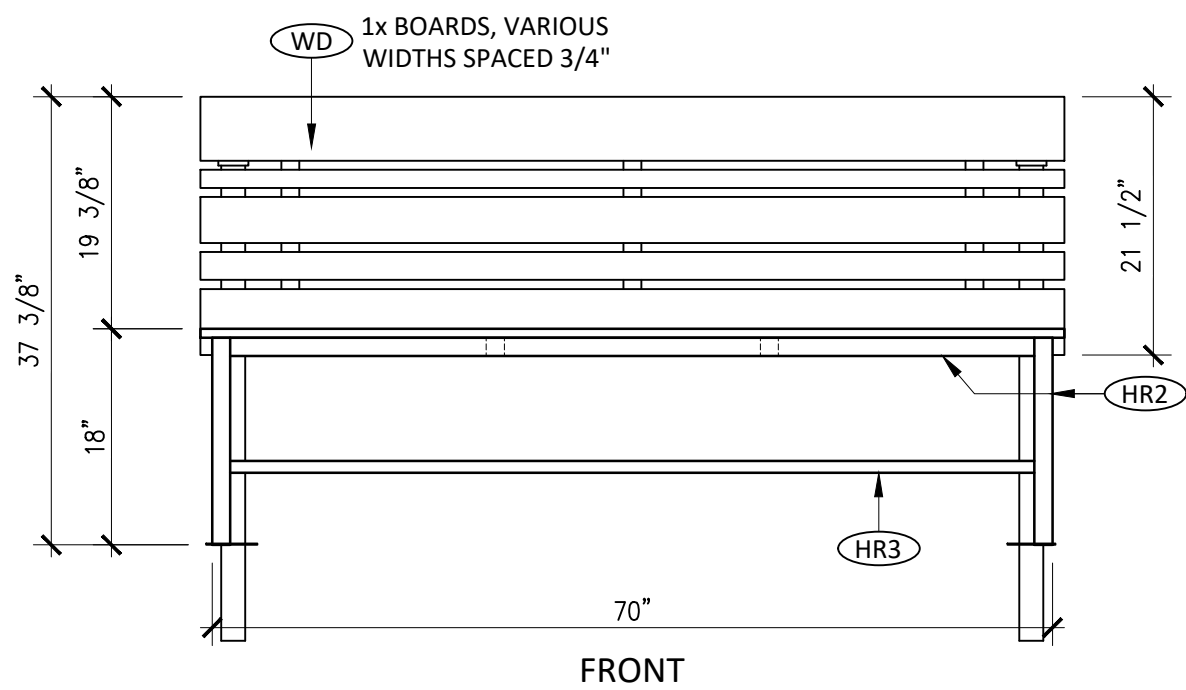
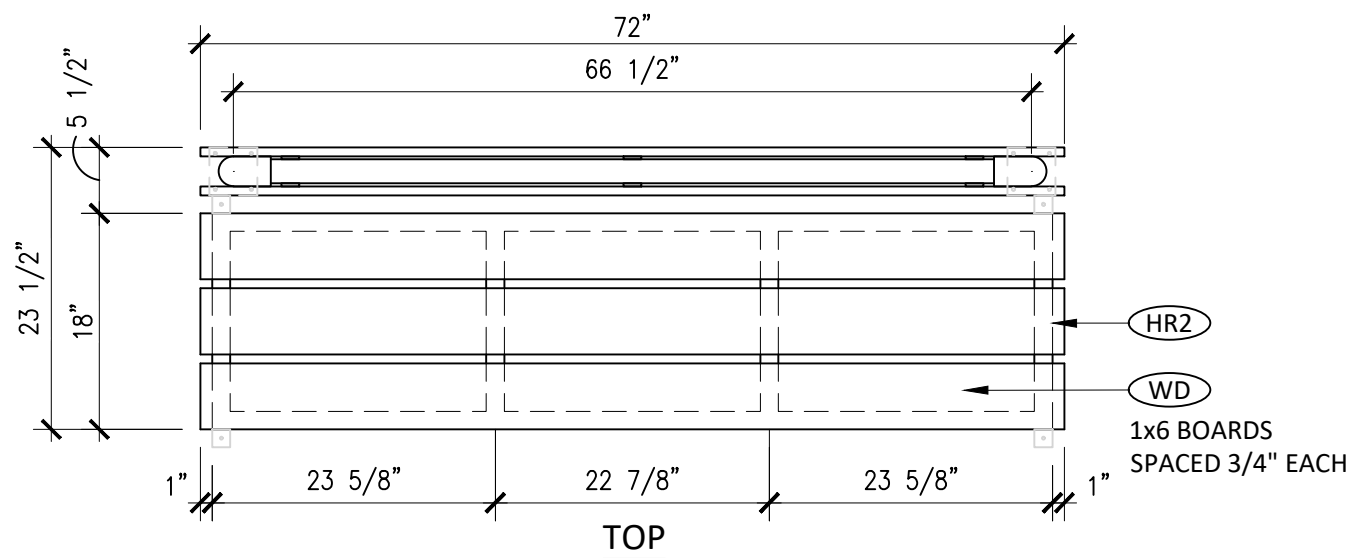
- IRON PIPE TO BE WIPED
CLEAN OF ANY LETTERING
BEFORE CLEAR COAT.
- ALL METAL SHALL BE FREE OF
SHARP EDGES AND BURS.
- IRON PIPE AND FITTINGS TO
BE TIGHTENED TO .42" PER
JOINT.
- WOOD SEAT & BACK - EASE
ALL CORNERS AND EDGES



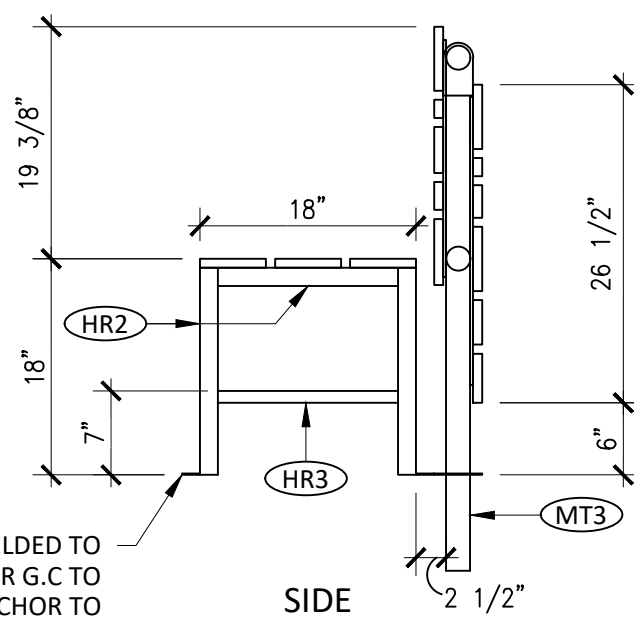
Date:
03/01/2019

Item Desc:
PATIO BENCH & BACK -
48" SECTION

Item ID:
JP-07R



TABS WELDED TO
LEGS FOR G.C TO
ANCHOR TO
CONCRETE FLOOR



3D VIEW PENDING

FINISH SCHEDULE

NO.	MATERIAL	FINISH
WD	CEDAR 1x6	KLIMA SEAL CLEAR SATIN EXTERIOR POLY.
MT3	1 1/2" NPT BLACK IRON PIPE, w/ STD. ELBOWS/UNIONS. TACK WELD ALL FITTINGS	CLEAR MATTE POWDER COAT
HR2	1 1/2" SQ. TUBE, HOT ROLLED STEEL	CLEAR MATTE POWDER COAT
HR3	1" SQ. TUBE, HOT ROLLED STEEL	CLEAR MATTE POWDER COAT

NOTES:

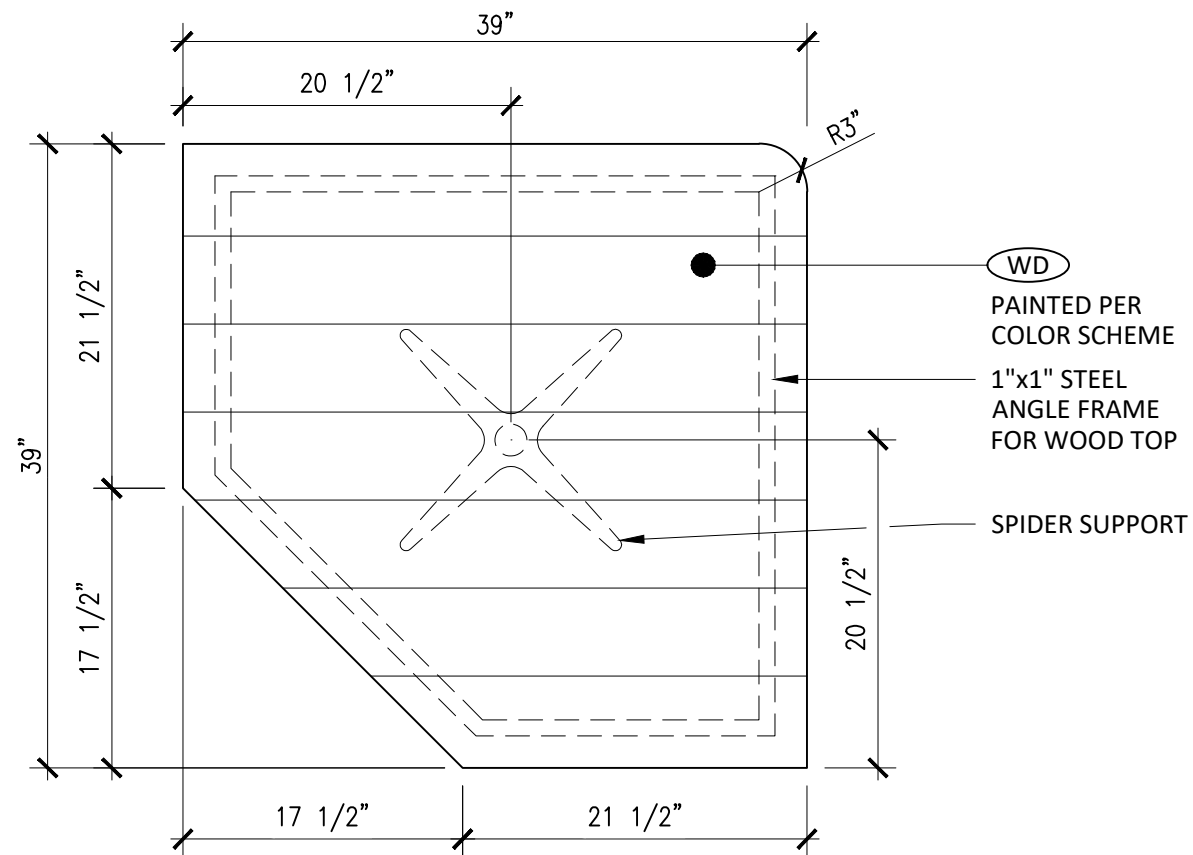
- IRON PIPE TO BE WIPED
CLEAN OF ANY LETTERING
BEFORE CLEAR COAT.
- ALL METAL SHALL BE FREE OF
SHARP EDGES AND BURS.
- IRON PIPE AND FITTINGS TO
BE TIGHTENED TO .42" PER
JOINT.
- WOOD SEAT & BACK - EASE
ALL CORNERS AND EDGES



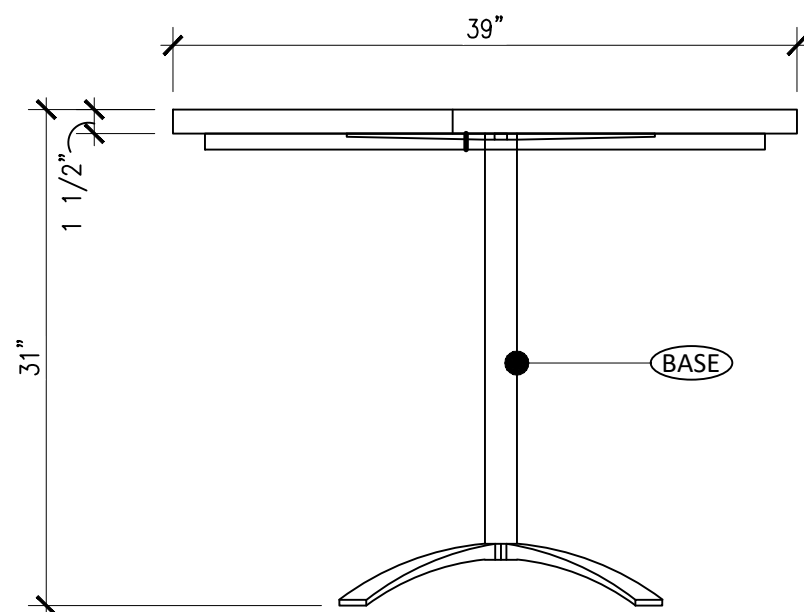
Date:
03/01/2019

Item Desc:
PATIO BENCH & BACK -
72" SECTION

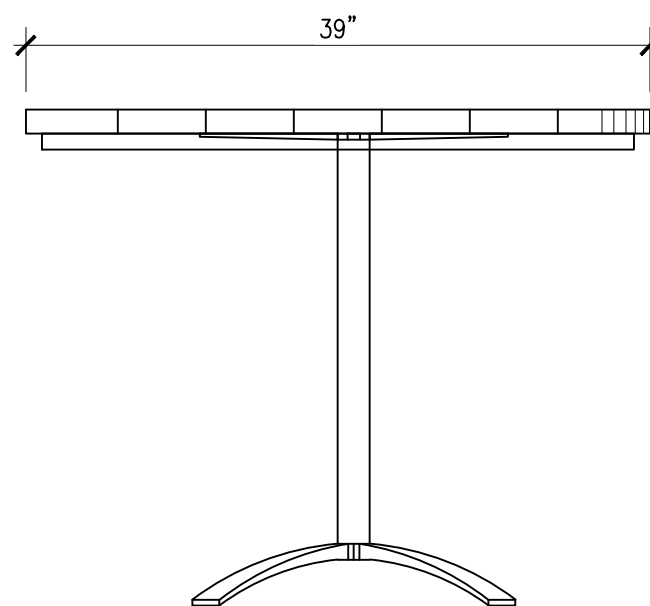
Item ID:
JP-09R



TOP



FRONT



SIDE



FINISH SCHEDULE

NO.	MATERIAL	FINISH
(WD)	SPRUCE, RIPPED TO WIDTH	PAINTED PER COLOR SCHEME
(BASE)	CAST ALUMINUM BASE EMU - ZAK #1361	24 ANTIQUE BLACK

NOTES:

1. WOOD TOP - EASE ALL EDGES & CORNERS .
2. WOOD TOP FRAME - WELDED AT CORNERS. ALL SHARP CORNERS/BURS TO BE GROUND/SANDED SMOOTH.



Date:
05/08/2019

Item Desc:
PATIO TABLE TOP, 39x39,
w/ CHAMFERED CORNER
(WOOD PER SCHEME)

Item ID:
JP-20

Rubbermaid

TAG: J35-1

FGA38BKPL Black

**Architek Trash Can
with Hinged Canopy
Top - 38 Gallons**

