



LOT AREA	
LOT #	AREA
1	4250.00 SF
2	3825.00 SF
3	3825.00 SF
4	3825.00 SF
5	3825.00 SF
6	3825.00 SF
7	3825.00 SF
8	3825.00 SF
9	3825.00 SF
10	3825.00 SF
11	3825.00 SF
12	3825.00 SF
13	3825.00 SF
14	3825.00 SF
15	3825.00 SF
16	3825.00 SF
17	3825.00 SF
18	3825.00 SF
19	3825.00 SF
20	3833.34 SF

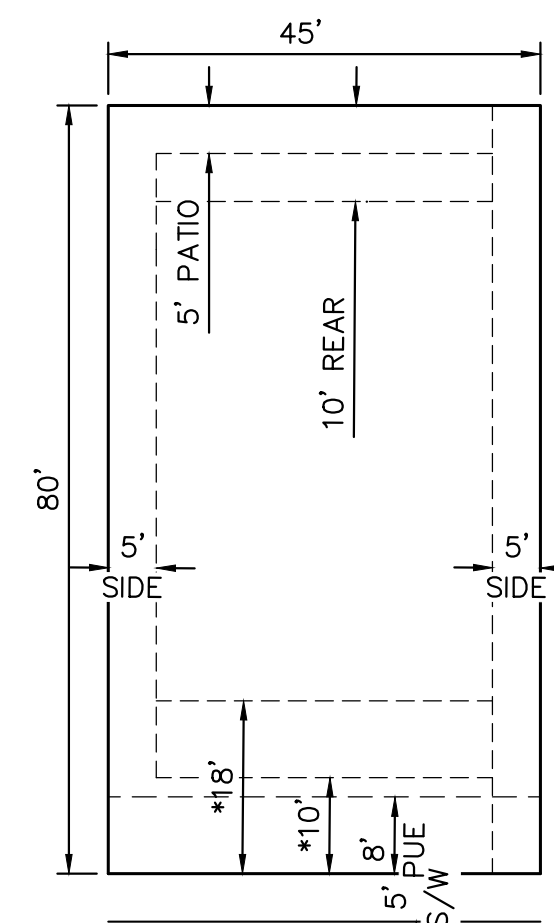
LOT AREA	
LOT #	AREA
21	3600.99 SF
22	3600.00 SF
23	3600.00 SF
24	3600.00 SF
25	3600.00 SF
26	3600.00 SF
27	4557.30 SF
28	8986.66 SF
29	4702.54 SF
30	3617.92 SF
31	3617.53 SF
32	3617.14 SF
33	3616.75 SF
34	3616.37 SF
35	3615.98 SF
36	3615.59 SF
37	3615.07 SF
38	3613.26 SF
39	3611.11 SF
40	3608.95 SF

LOT AREA	
LOT #	AREA
41	4220.02 SF
42	8211.90 SF
43	4848.94 SF
44	3600.00 SF
45	3600.00 SF
46	3600.00 SF
47	3600.00 SF
48	3600.00 SF
49	3600.00 SF
50	3600.00 SF
51	3595.97 SF
52	3600.00 SF
53	3600.00 SF
54	3600.00 SF
55	3600.00 SF
56	3600.00 SF
57	3600.00 SF
58	3587.50 SF
59	3587.50 SF
60	3600.00 SF

SITE DATA		
GROSS AREA	690,870.09 SF	15.86 AC
NET AREA	631,557.03 SF	14.50 AC
LOT SUMMARY		
LOT TOTAL	90	
TOTAL LOT AREA	342,936.23 SF	7.87 AC
AVG. LOT AREA	3,810.40 SF	0.09 AC
MIN. LOT AREA	3,587.50 SF	0.08 AC
MAX LOT AREA	8,986.66 SF	0.21 AC
LOT %	49.64%	
PROPOSED DENSITY (NET)	6.21 DU/AC	
OPEN SPACE SUMMARY		
TOTAL OPEN SPACE AREA	143,393.78 SF	3.29 AC
OPEN SPACE % (NET)	22.70%	
RIGHT-OF-WAY SUMMARY		
RIGHT-OF-WAY AREA	204,540.08 SF	4.70 AC
RIGHT-OF-WAY %	29.61%	
RIGHT-OF-WAY LOCAL AREA	145,227.02 SF	3.33 AC
RIGHT-OF-WAY OFFSITE AREA	59,313.06 SF	1.36 AC

LOT AREA	
LOT #	AREA
61	3600.00 SF
62	3600.00 SF
63	3600.00 SF
64	3600.00 SF
65	3600.00 SF
66	3595.97 SF
67	3595.97 SF
68	3600.00 SF
69	3600.00 SF
70	3600.00 SF
71	3600.00 SF
72	3600.00 SF
73	3600.00 SF
74	3587.50 SF
75	3587.50 SF
76	3600.00 SF
77	3600.00 SF
78	3600.00 SF
79	3600.00 SF
80	3600.00 SF

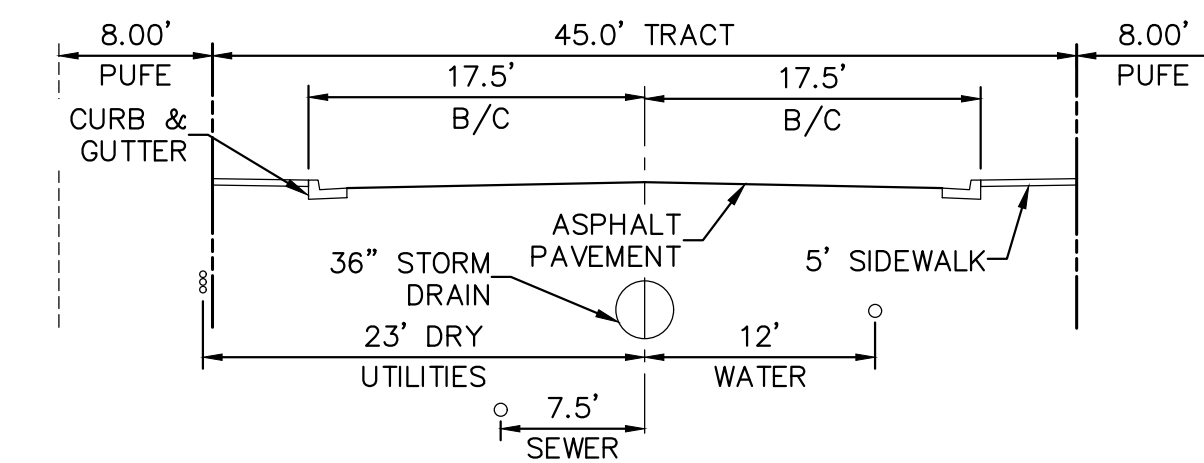
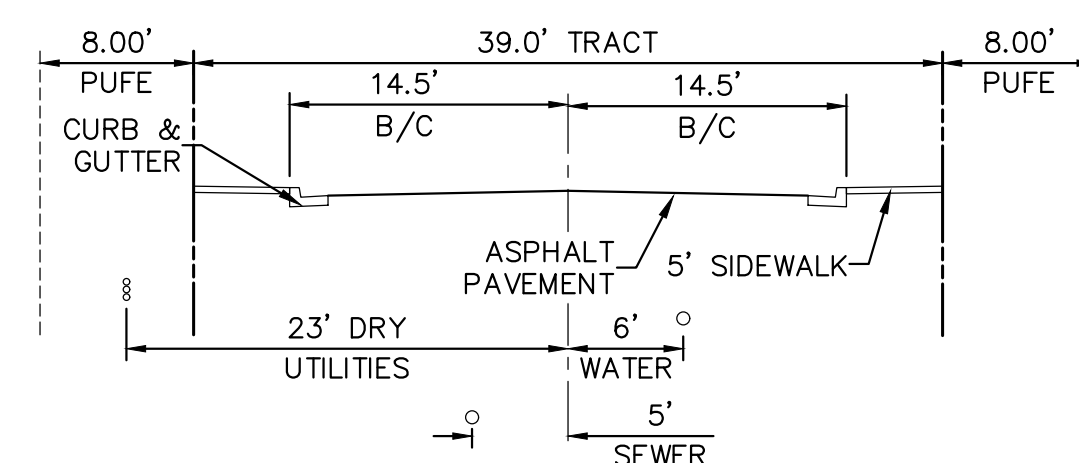
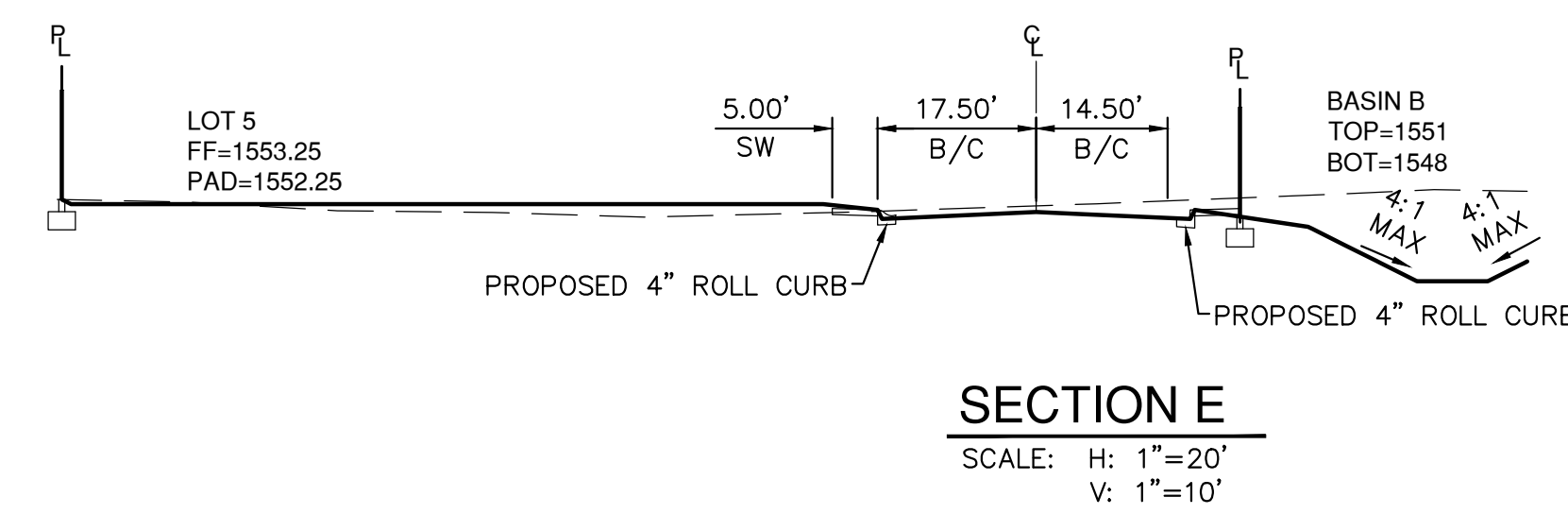
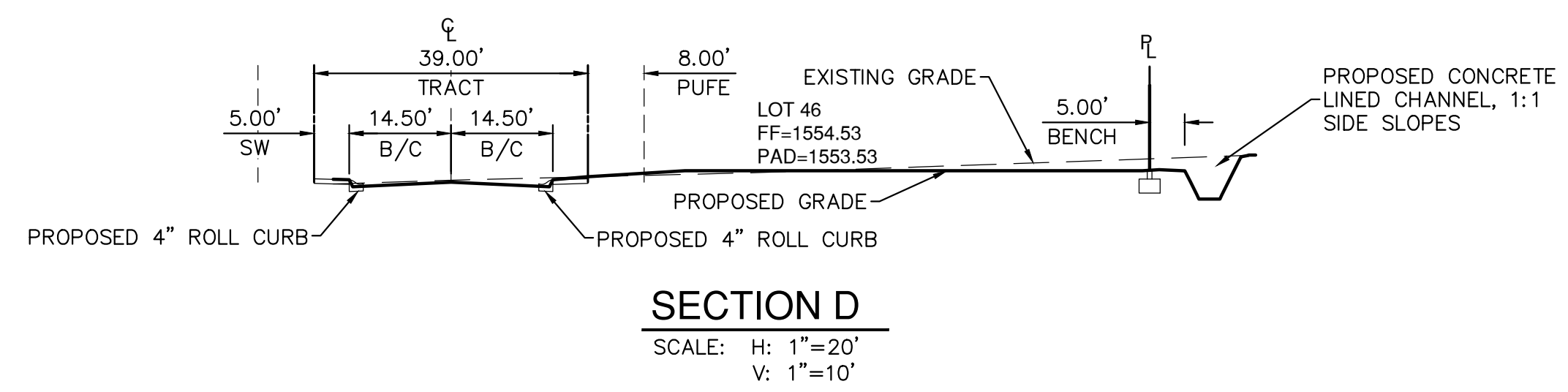
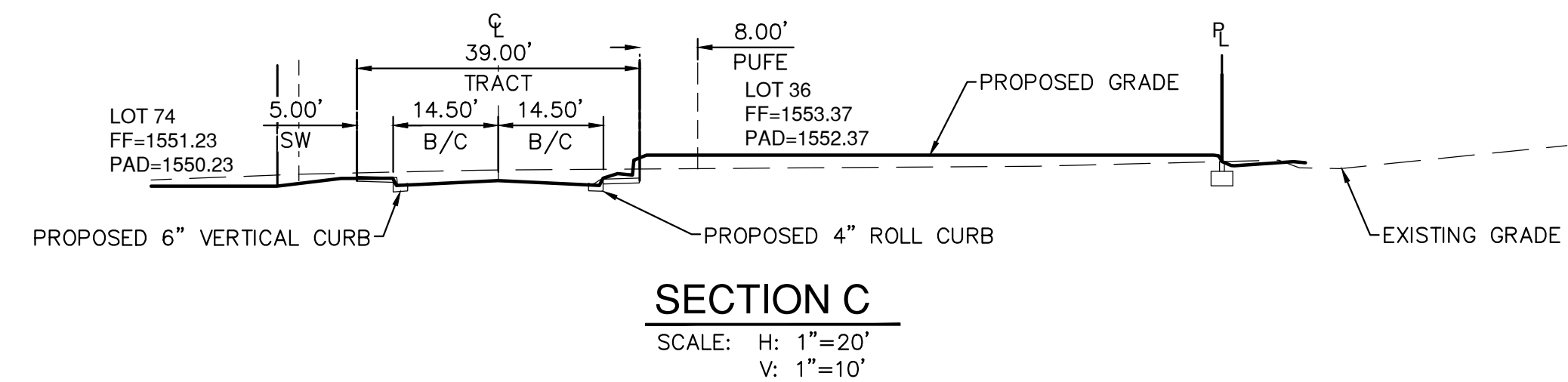
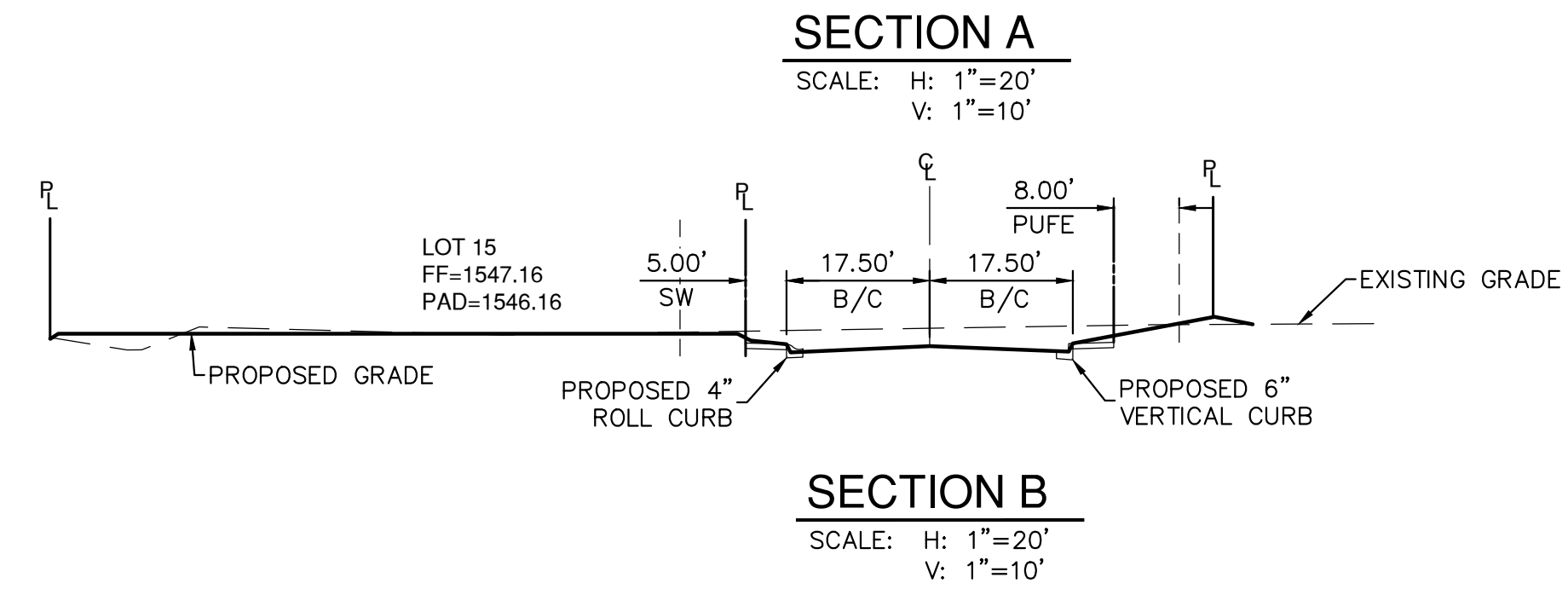
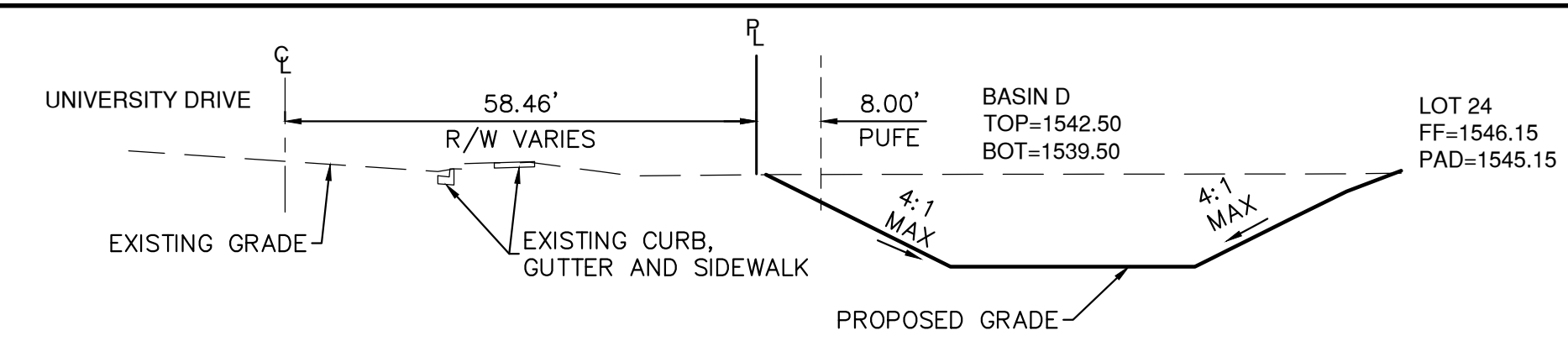
LOT AREA	
LOT #	AREA
81	3600.00 SF
82	3595.97 SF
83	3600.00 SF
84	3600.00 SF
85	3600.00 SF
86	3595.97 SF
87	3587.50 SF
88	3600.00 SF
89	3600.00 SF
90	3600.00 SF



**SOLID WASTE GENERAL NOTES:**

- ALL SOLID WASTE COLLECTION ROUTES SHALL MEET ENGINEERING DESIGN CRITERIA (STREET WIDTHS, TURNING RADI) IN A MANNER THAT ALLOWS SOLID WASTE COLLECTION VEHICLES TO ACCESS BIN ENCLOSURES. SITES SHALL BE DESIGNED SO COLLECTION VEHICLES CAN SAFELY ACCESS AND LIFT A BIN WITHOUT OBSTRUCTIONS (GROUND LEVEL AND AERIAL OBSTRUCTIONS). SEE CITY OF MESA STANDARD DETAIL M-62.01.
- NO STRUCTURE OF ANY KIND SHALL BE PLACED WITHIN 4' HORIZONTAL OF THE BARREL COLLECTION LOCATION AREAS.

TRACT AREA		
TRACT ID	TRACT USE	AREA
A	RETENTION AREA	48399.93 SF
B	AMENITY AND RETENTION AREA	16864.93 SF
C	AMENITY AND RETENTION AREA	29260.42 SF
D	LANDSCAPE AREA	1400.00 SF
E	LANDSCAPE AREA	1728.74 SF
F	LANDSCAPE AREA	1400.00 SF
G	LANDSCAPE AREA	1728.74 SF
H	LANDSCAPE AREA	1400.00 SF
I	RETENTION, CONCRETE CHANNEL, AND AMENITY AREA	25714.52 SF
J	RETENTION AREA	5961.30 SF
K	DETENTION AND LANDSCAPE AREA	9535.20 SF
L	STREET TRACT	145227.02 SF



**Bowman**

Bowman Consulting Group, Ltd.  
 1285 West Washington, Ste 108  
 Tempe, Arizona 85281  
 Phone: (480) 629-8830  
 www.bowmanconsulting.com  
 © 2021 Bowman Consulting Group, Ltd.

NOTES & DETAILS  
**UNIVERSITY & 202**  
 MESA, ARIZONA  
 MARICOPA COUNTY

PROJECT NUMBER



PLAN STATUS

DATE	DESCRIPTION
HC DESIGN	AAG DRAWN NTL
SCALE	H: V: CHKD
JOB No.	050952
DATE	1/24/2022

**PP02**  
 SHEET 02 OF 08





PROJECT NUMBER



PLAN STATUS

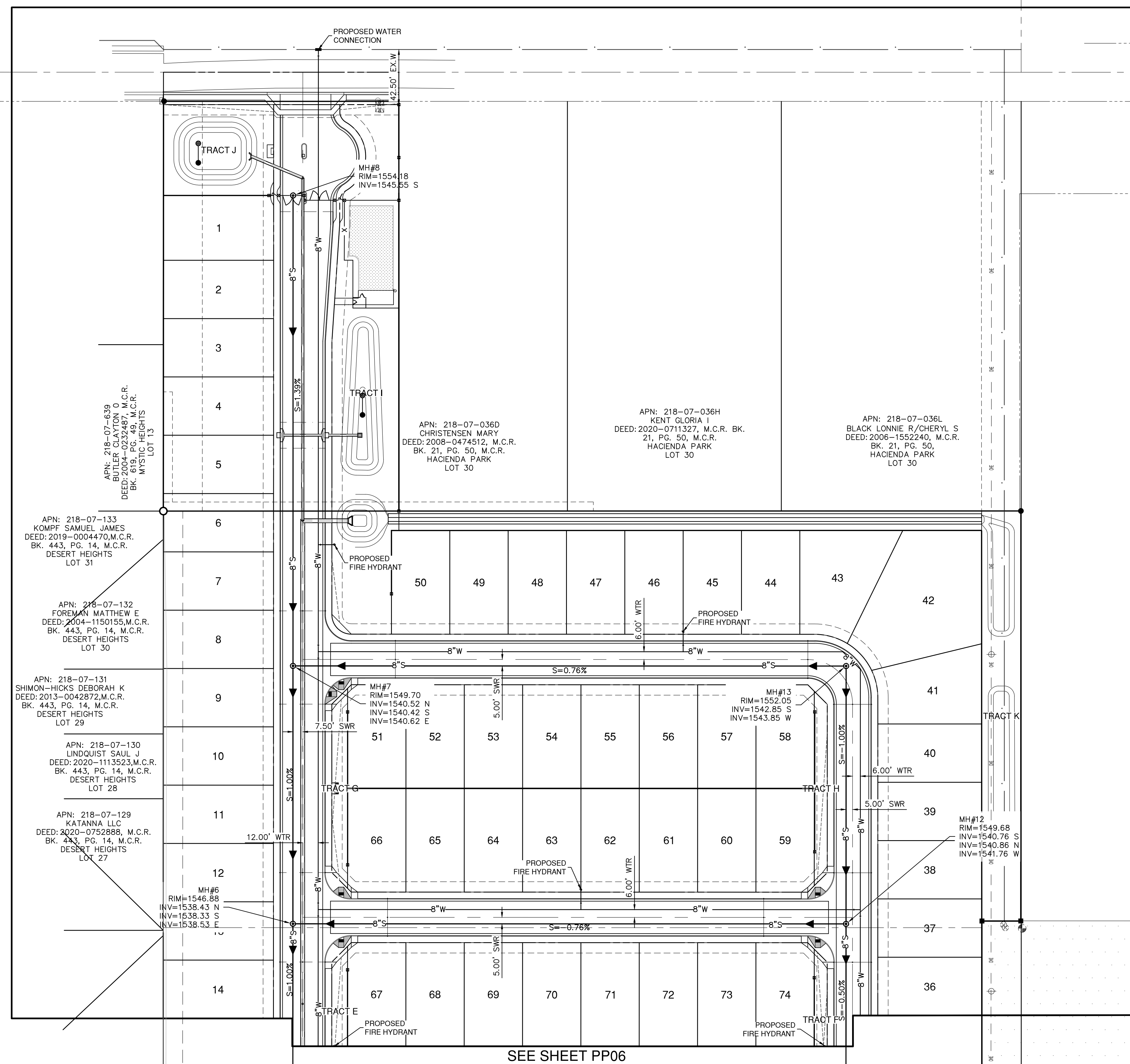
DATE	DESCRIPTION
HC DESIGN	AAG
NTL DRAWN	NATHAN LARSON
CHKD	

JOB No. 050952

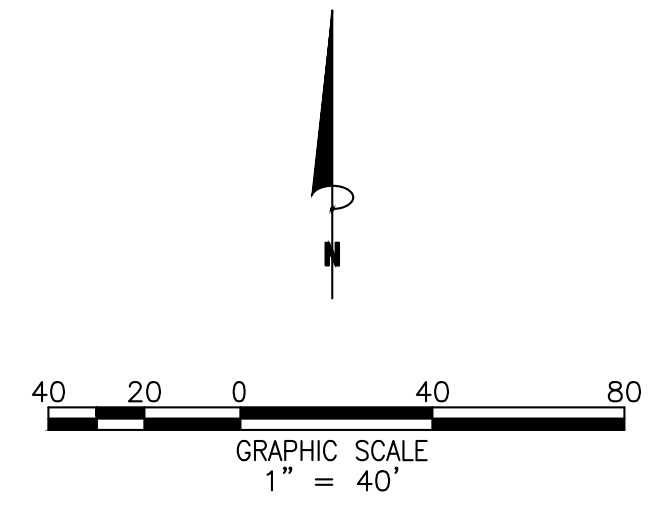
DATE : 1/24/2022

**PP05**

SHEET 05 OF 08



SEE SHEET PP06





## GRADING PLAN UNIVERSITY & 202

PROJECT NUMBER



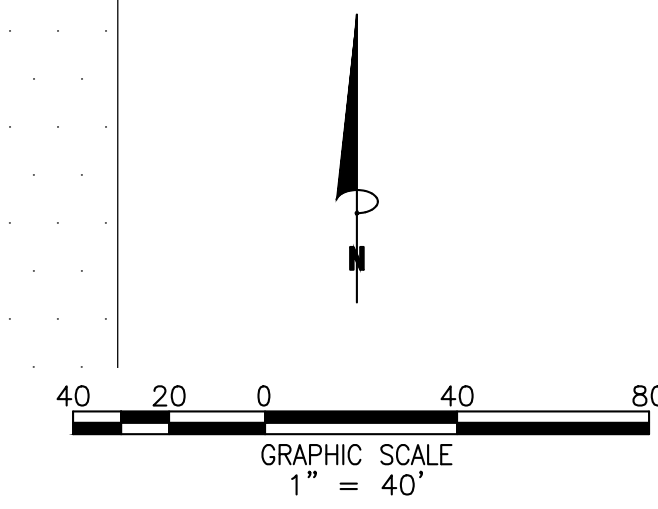
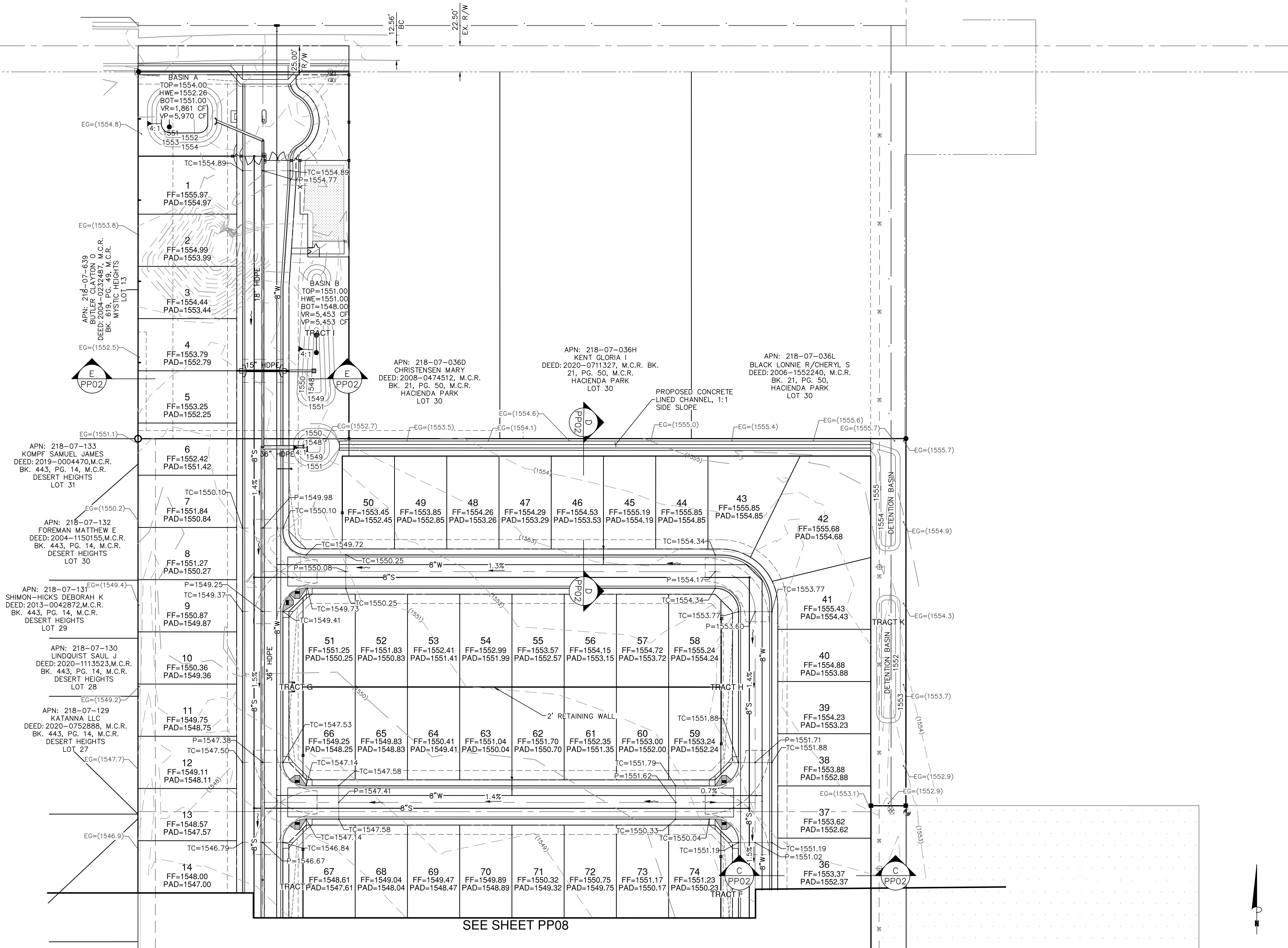
PLAN STATUS

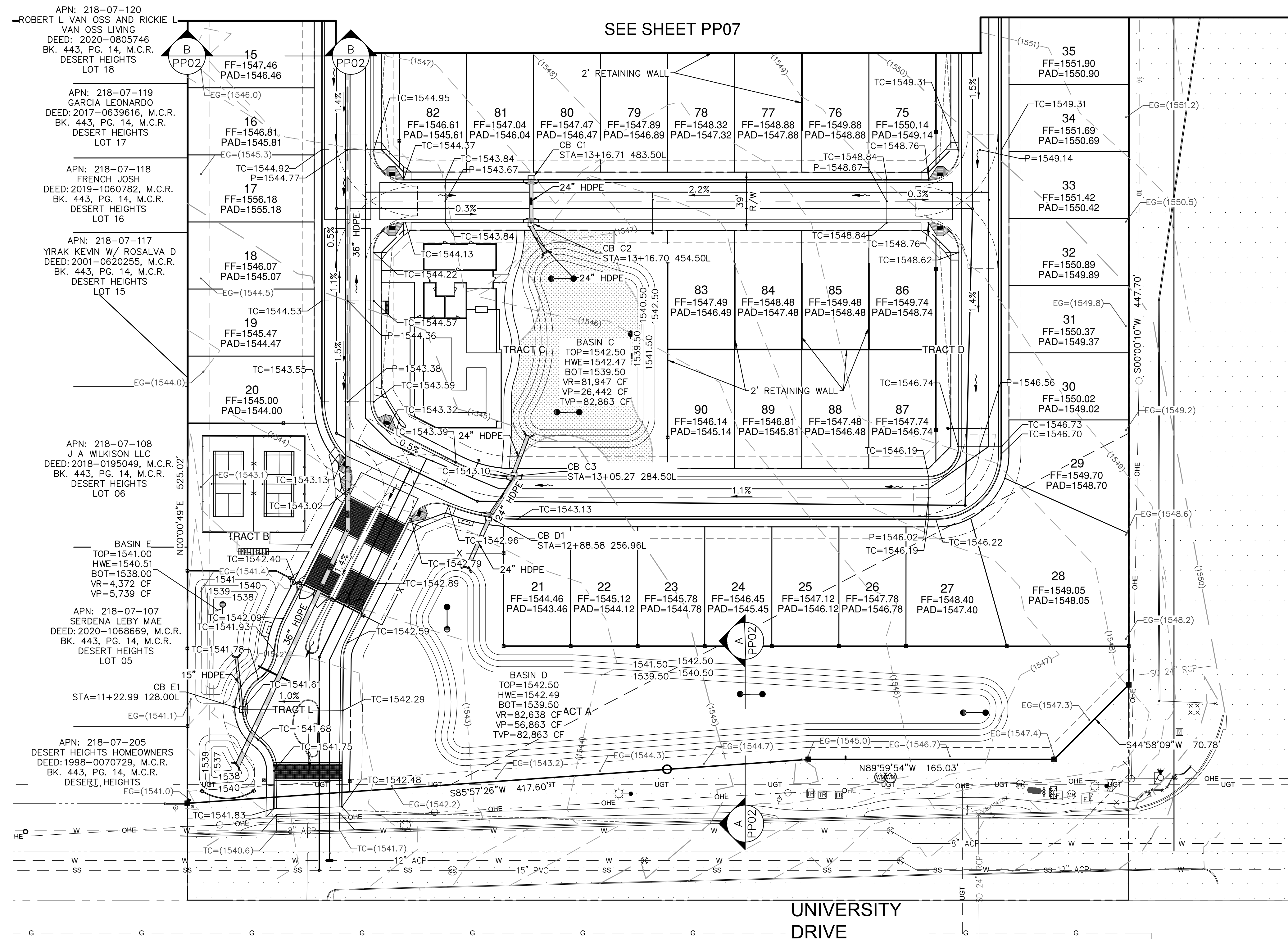
DATE	DESCRIPTION
HC DESIGN	AAG
DESIGN DRAWN	NTL
SCALE	CHKD
H: 1" = 40'	
V:	
JOB No. 050952	

DATE: 1/24/2022

PP07

SHEET 07 OF 08





PROJECT NUMBER



PLAN STATUS

DATE	DESCRIPTION
HC	AAG NTL
DESIGN	DRAWN CHKD
SCALE	H: 1" = 40'
	V:
JOB No.	050952
DATE :	1/24/2022

