

Project Information

Project Address: 5822 E Longbow Parkway
Mesa, AZ 85215-8522

Square Footage: Branch - 2,155 SF, Tenant - 1,788 SF, FIRE RISER ROOM - 66 SF.
Staff Planning: 5 FTE

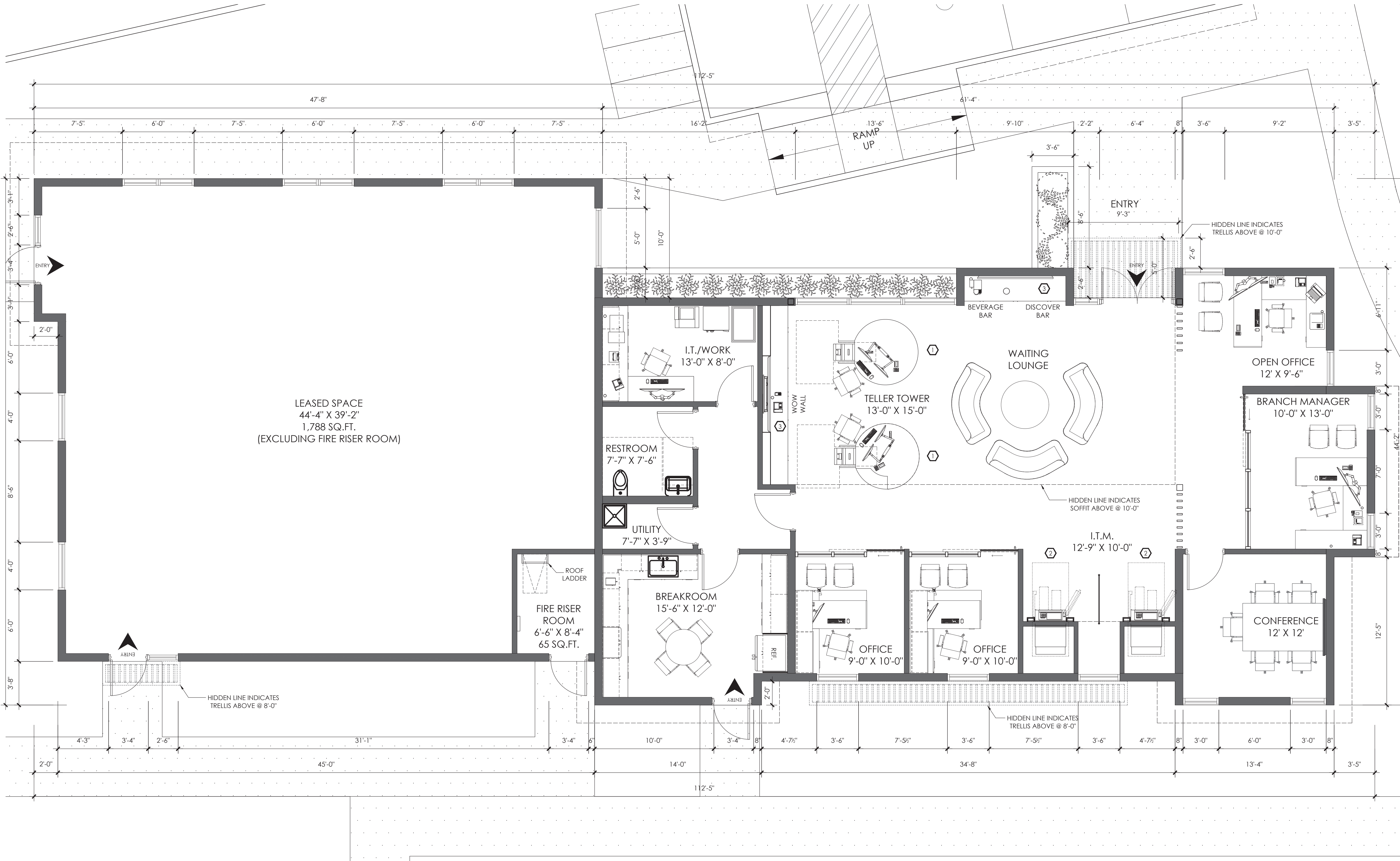
Space Planning:
Service Pods: 2
Private Offices: 4
Self Service ITMs: 2
Meeting: 1
Secure: 1 Work Room
Back of House: 1 Breakroom / 1 IT Room / 1 Storage
Restrooms: 1 Womens / 1 Mens

Key Notes

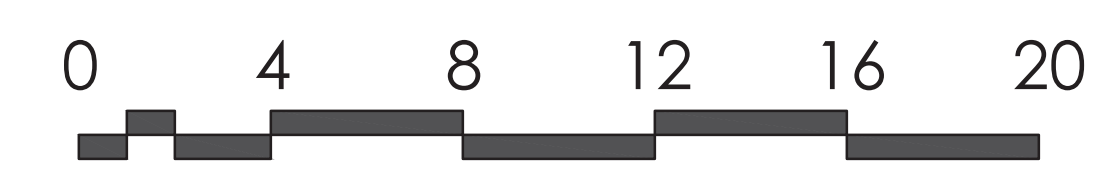
1. Teller Pod
2. ITM
3. 86" digital display

Symbol Legend

- X Room Name
- X Room Number
- X'X'X'X'X' Room Size
- ▲ Building Entry
- New walls



02 Conceptual Floor Plan
SCALE: 1/4" = 1'-0"



NUVISION CREDIT UNION
LANGBOW BRANCH

DATE : 03/22/2024
VERSION : Design Review

APPROVED BY: _____

SIGNATURE _____

DATE _____

DBSI

6950 West Morelos Place, Chandler, AZ 85226
P 602.264.7263 | www.dbsi-inc.com

PLANS, DRAWINGS, AND ANY INFORMATION SHOWN HEREIN ARE CONCEPTUAL, MAY BE SUBJECT TO CHANGE, AND SHALL NOT BE USED TO OBTAIN BIDS AND/OR FOR CONSTRUCTION. REPRODUCTION OR DISTRIBUTION WITHOUT PRIOR WRITTEN CONSENT FROM DBSI IS PROHIBITED. Copyright © 2018 DBSI Inc. and its subsidiaries. All rights reserved.