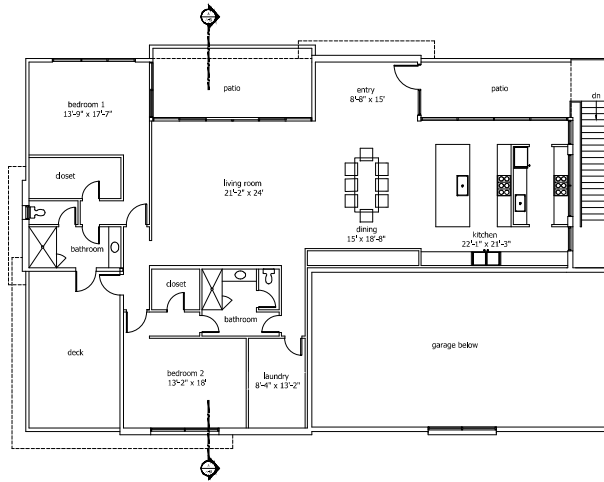
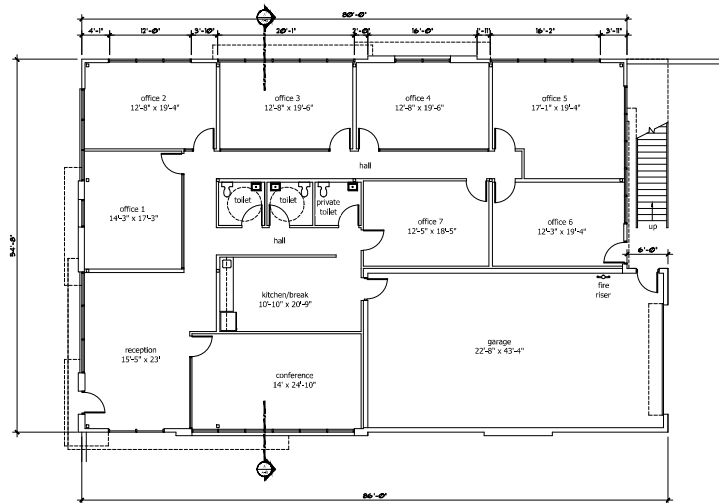


This document is the property of Hitchens Associates, Inc. and is not to be distributed, copied, or used for any other purpose without the written consent of Hitchens Associates, Inc. All rights reserved. Hitchens Associates, Inc. is a registered professional architectural firm in the State of Arizona. The design and construction of this project are the responsibility of Hitchens Associates, Inc. and its registered professional architects. No part of this document may be reproduced or transmitted in any form or by any means, electronic or mechanical, including photocopying, recording, or by any information storage and retrieval system, without the prior written permission of Hitchens Associates, Inc.



**SECOND FLOOR PLAN**



**FIRST FLOOR PLAN**

**HITCHENS ASSOCIATES**  
**ARCHITECTS**  
 306 N. LOS ALAMOS  
 MESA, ARIZONA 85201  
 TELEPHONE: 602-85-0094



REVISIONS

PROPOSED  
 LIVE WORK DEVELOPMENT  
 4024 E. PALM STREET  
 MESA, ARIZONA

PROJECT NO: 22104  
 DRAWN BY: GLH  
 DATE: 3-29-2024

**FLOOR PLANS**  
**A-1**