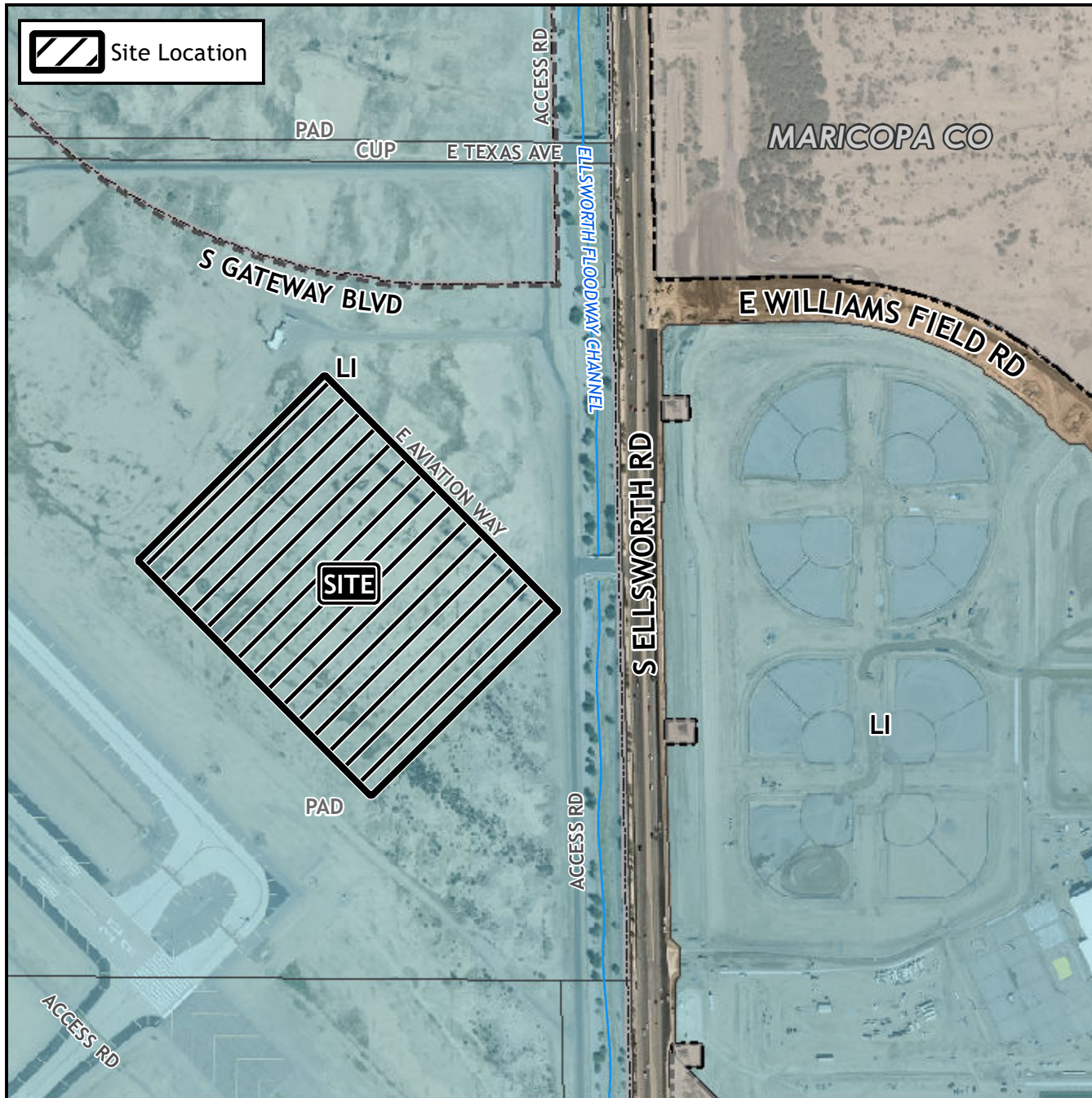


Board of Adjustment Vicinity Map: BOA24-00024

Case Details



Case:

BOA24-00024

Site / Address:

(District 6). Within the 6100 to 6300 blocks of South Ellsworth Road (west side). Located south of Williams Field Road on the west side of Ellsworth Road.

Request:

Requesting a Special Use Permit (SUP) for a Comprehensive Sign Plan (CSP) in the Light Industrial with a Planned Area Development overlay (LI-PAD) district.

