



Design Review Board



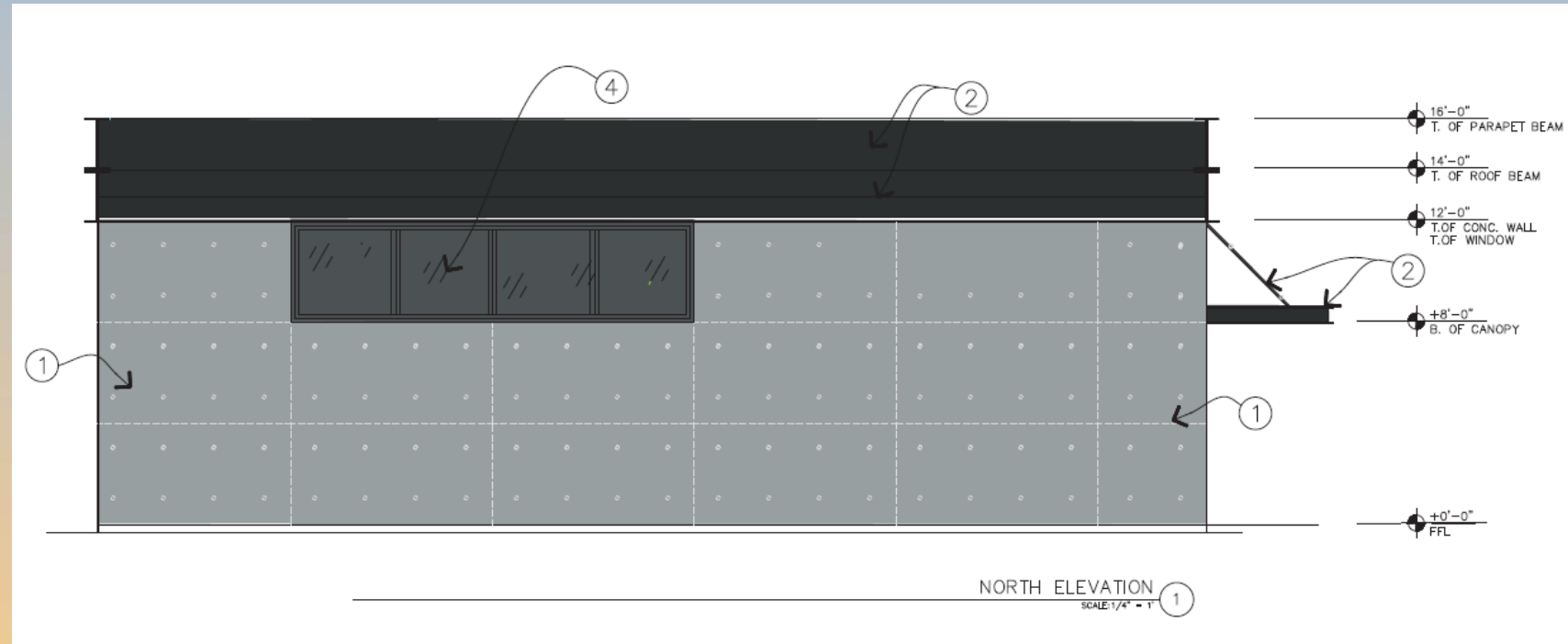
DRB22-00820

1759 N Rosemont



Request

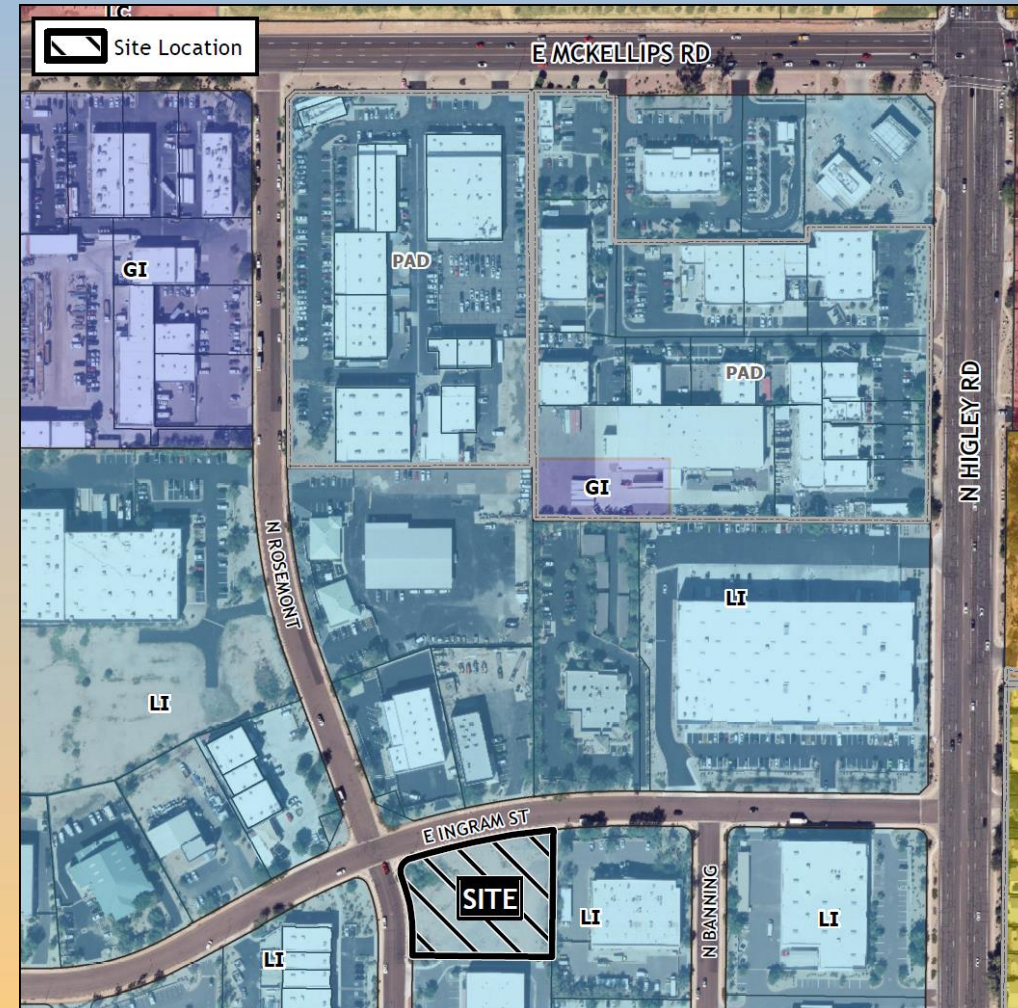
- Design Review
- To allow a Contractor's Yard





Location

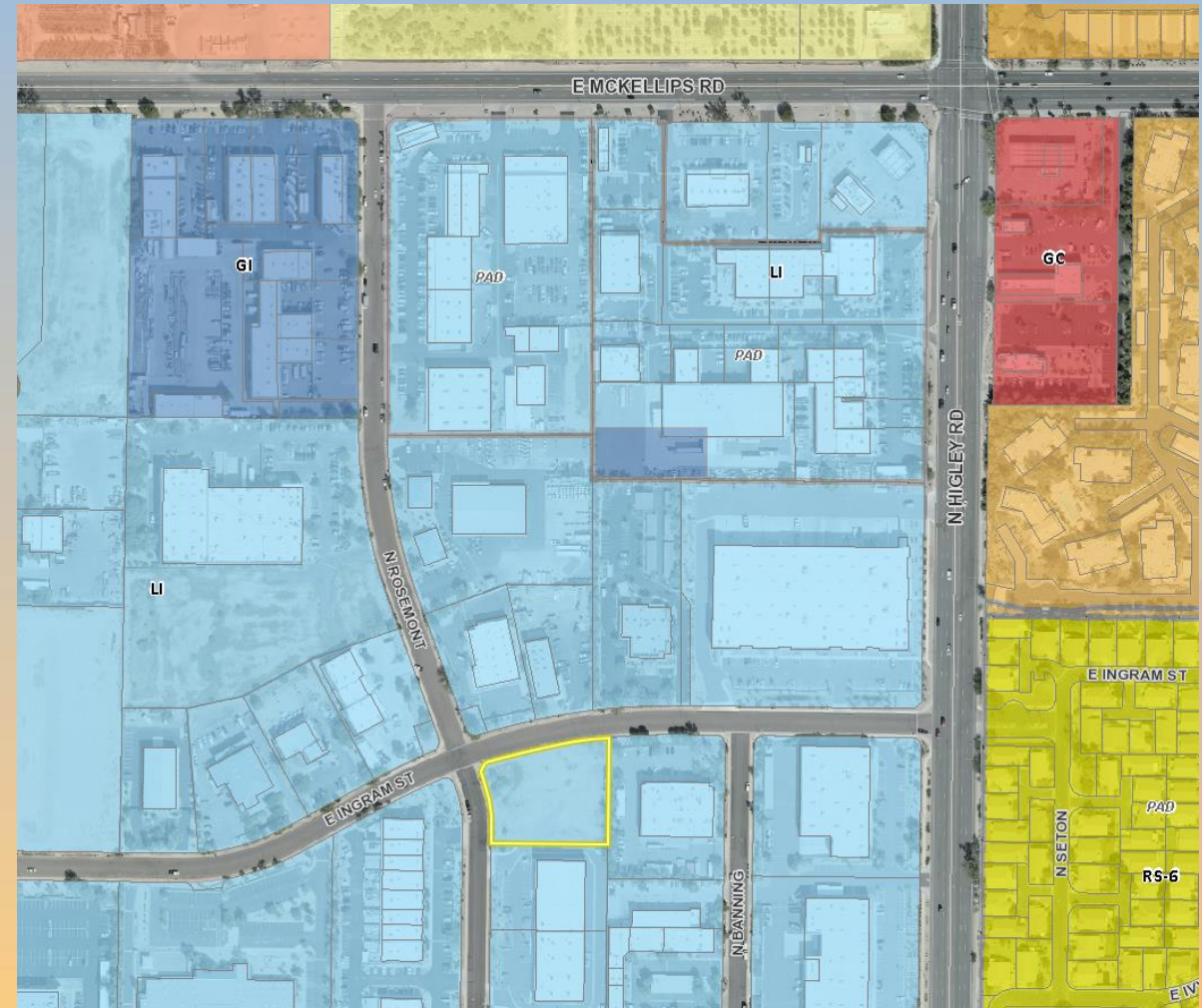
- East of Higley Road
- South of McKellips Road
- South side of Ingram St





Zoning

- Light Industrial
- Use is allowed by right





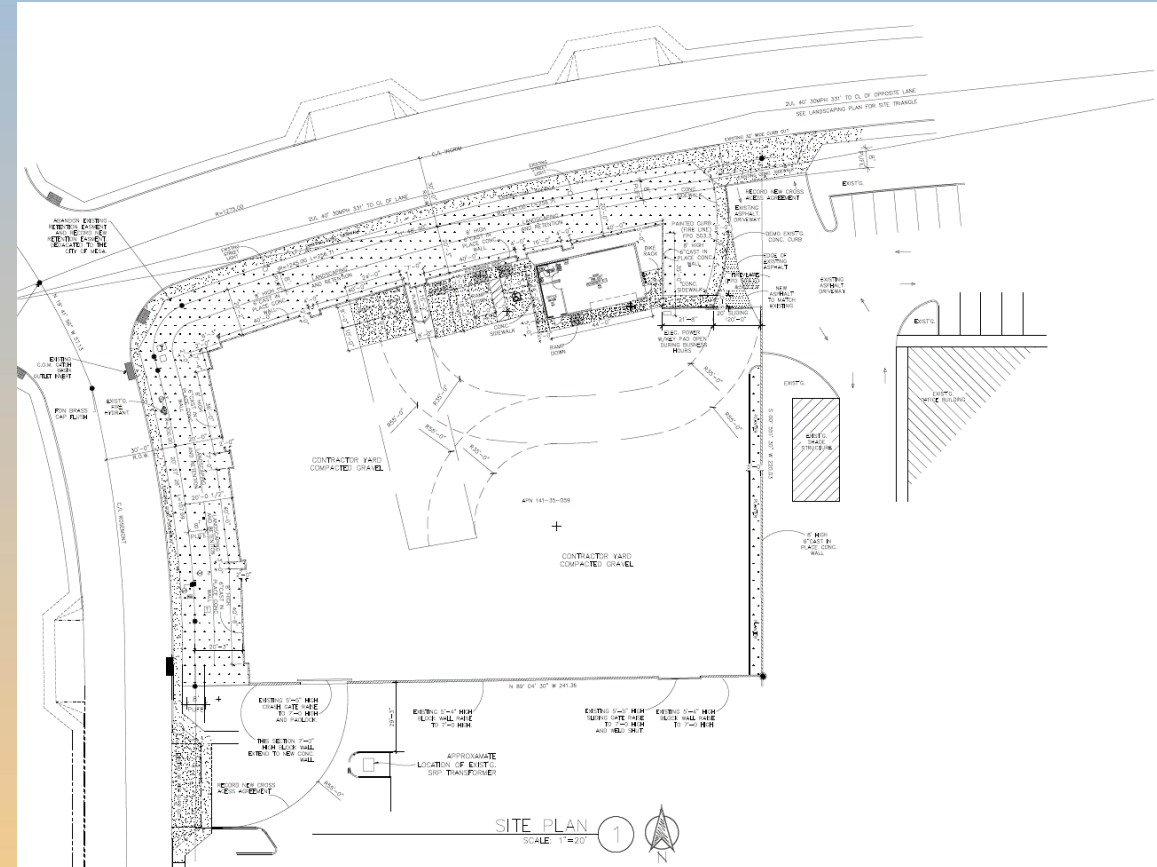
Site Photos



View from the Intersection of N Rosemont and E Ingram St





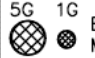








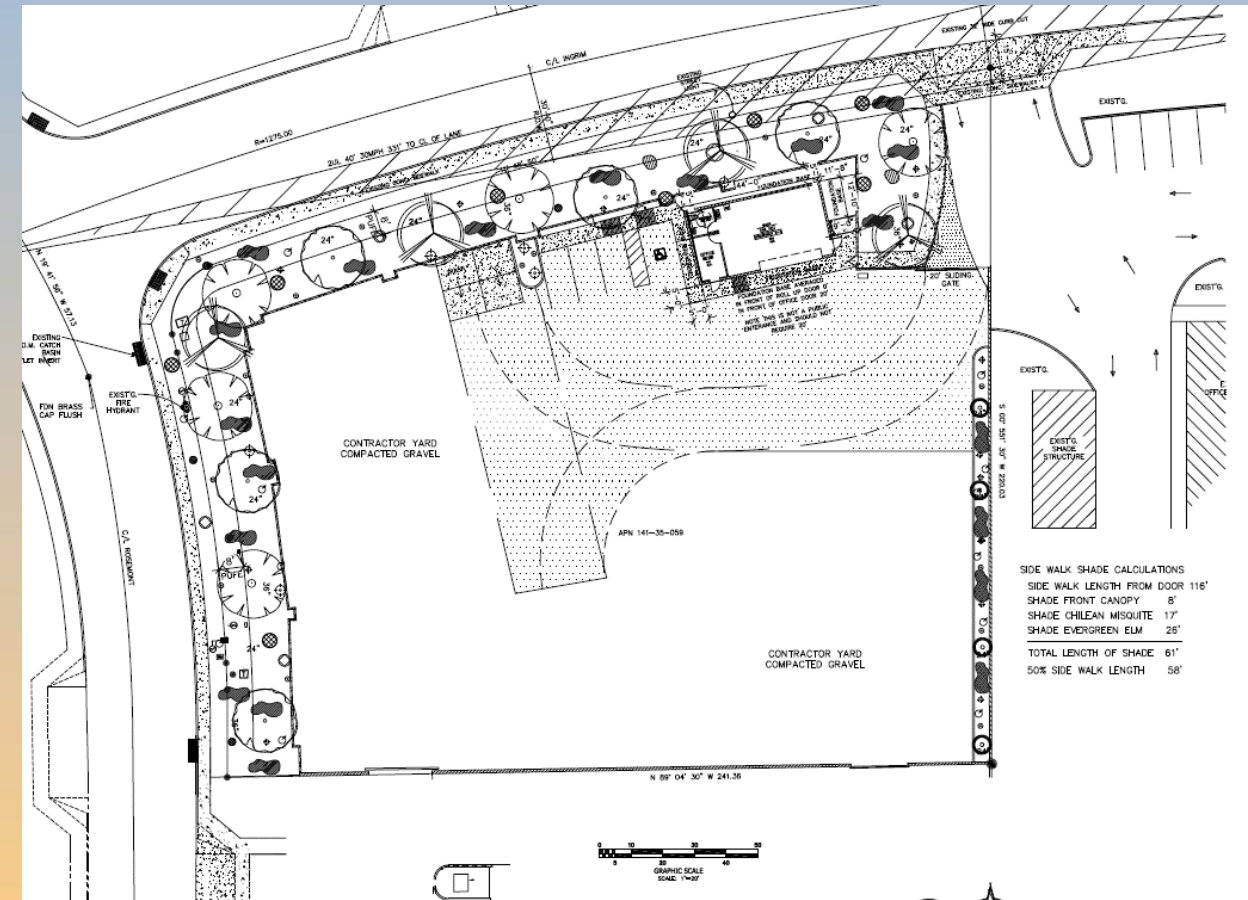
- 1 structure totaling 1,056 square feet
- Access from Ingram
- Shared Access with the development to the south





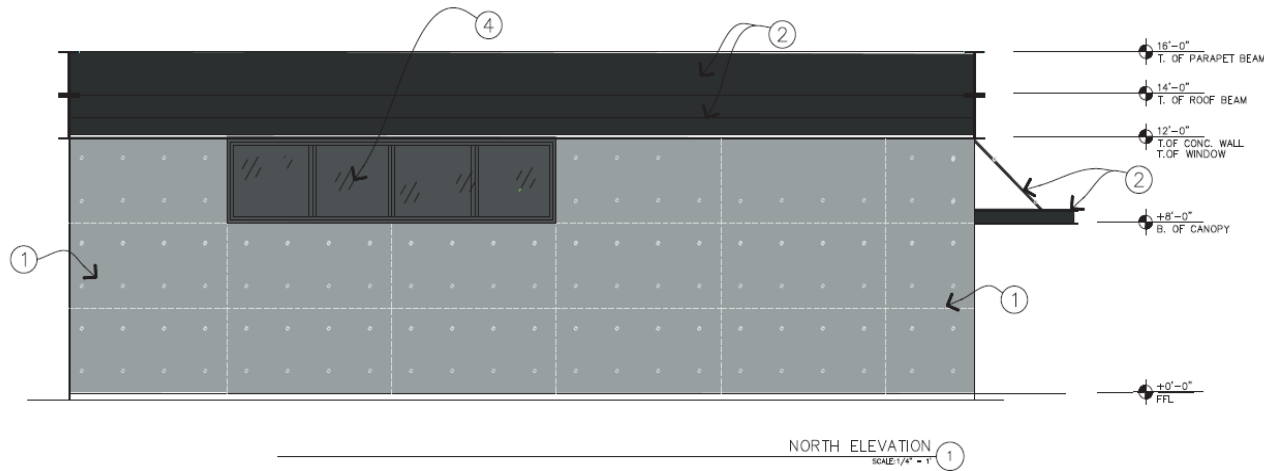
Landscape Plan

PLANT LEGEND				
SYMBOL	COMMON / BOTANICAL NAME	SIZES	QTY	EMITTER QTY/T
TREES:				
	SISSOO TREE DALBERGIA SISSO	36" BOX = 1 24" BOX = 4	4/T	
	EVERGREEN ELM ULMUS PARVIFLUA "TRUE GREEN"	36" BOX = 1 24" BOX = 3	4/T	
	CHILEAN MISQUITE PROSOPIA CHILENSIS	36" BOX = 3 24" BOX = 2	4/T	
	ITALIAN EVERGREEN CUPRESSUS SEMPERVIRENS	36" BOX = 0 24" BOX = 4	4/T	
SHRUBS:				
	BOXWOOD BEAUTY MATAL PLUM CARRISA GRAND "BOXWOOD BEAUTY"	5 GAL. = 7 1 GAL. = 5	2-3/S	
	DESERT CARPET ACACIA ACACIA REDOLENS "DESERT CARPET"	5 GAL. = 5 1 GAL. = 5	2-3/S	
	RED YUCCA HESPERALOE PARVIFLORA	1 GAL. = 14	2-3/S	
	DWARF PURPLE BOUGAINVILLEA BOUGAINVILLEA "MONEYM"	5 GAL. = 5 1 GAL. = 5	2-3/S	
	DWARF ROSENKA BOUGAINVILLEA BOUSANVILLEA "ROSENKA"	5 GAL. = 5 1 GAL. = 13	2-3/S	
	MEXICAN BIRD OF PARADISE CAESALPINIA PULCHERRIMA	1 GAL. = 15	2-3/S	
GROUND COVER:				
	GAZANIA DAYBREAK TIGER STRIPES MIXED GAZANIA RIGENS	1 GAL. = 23	1 /G.C.	

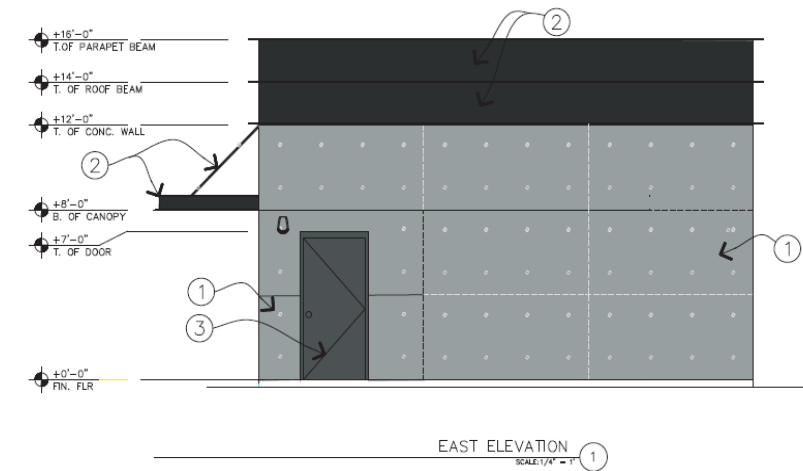
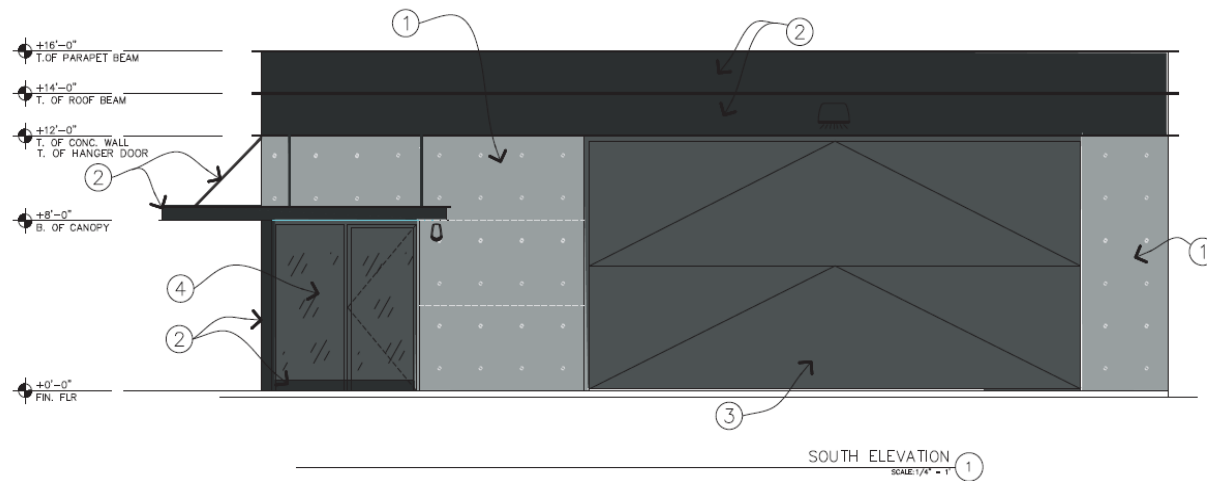
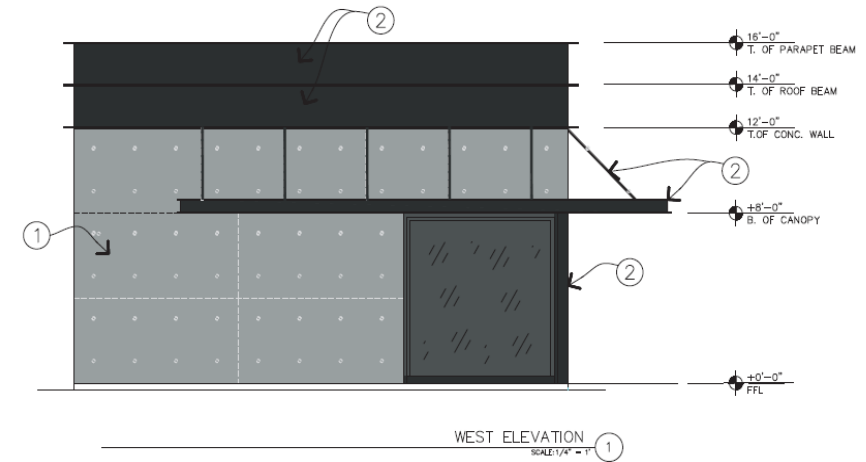




Elevations



- ① EXPOSED CAST IN PLACE CONCRETE W/ SNAP TIES
- ② SHERWIN WILLIAMS NO LIMITS HGSW1461
- ③ SHERWIN WILLIAMS FLANNEL GREY HGSW1464
- ④ GLASS DARK GREY DBL. GLAZED LOW-E BLACK ALUM. FRAME





Colors and Materials

*MATERIAL BOARD FOR
1759 N. ROSEMONT, MESA, AZ 85205
APN 141-35-059*

BUILDING PRIMARY COLOR
EXPOSED CAST IN PLACE
CONCRETE W/ SNAP TIES



BUILDING 2ND COLOR
SHERWIN WILLIAMS
FLANNEL GREY HGSW1464

BUILDING ACCENT COLOR
SHERWIN WILLIAMS
NO LIMITS HGSW1461



STORFRONT TRIM COLOR
GLASS DARK GREY DBL.
GLAZED LOW-E
BLACK ALUM. FRAME

PERIMETER WALL
EXPOSED CAST IN PLACE
CONCRETE W/ SNAP TIES





Alternative Compliance

- ✓ Materials. Facades shall incorporate at least 3 different materials
- ✓ Materials. No more than 50% of the façade may be covered with one single material
- ✓ Roof Articulation. Provide architectural interest at the skyline and accentuate appropriate building elements.



Findings

Staff is seeking your review and recommendation on the following:

- ✓ Proposed building elevations
- ✓ Proposed landscape plan
- ✓ Alternative Compliance requests

Staff welcomes any feedback



Design Review Board