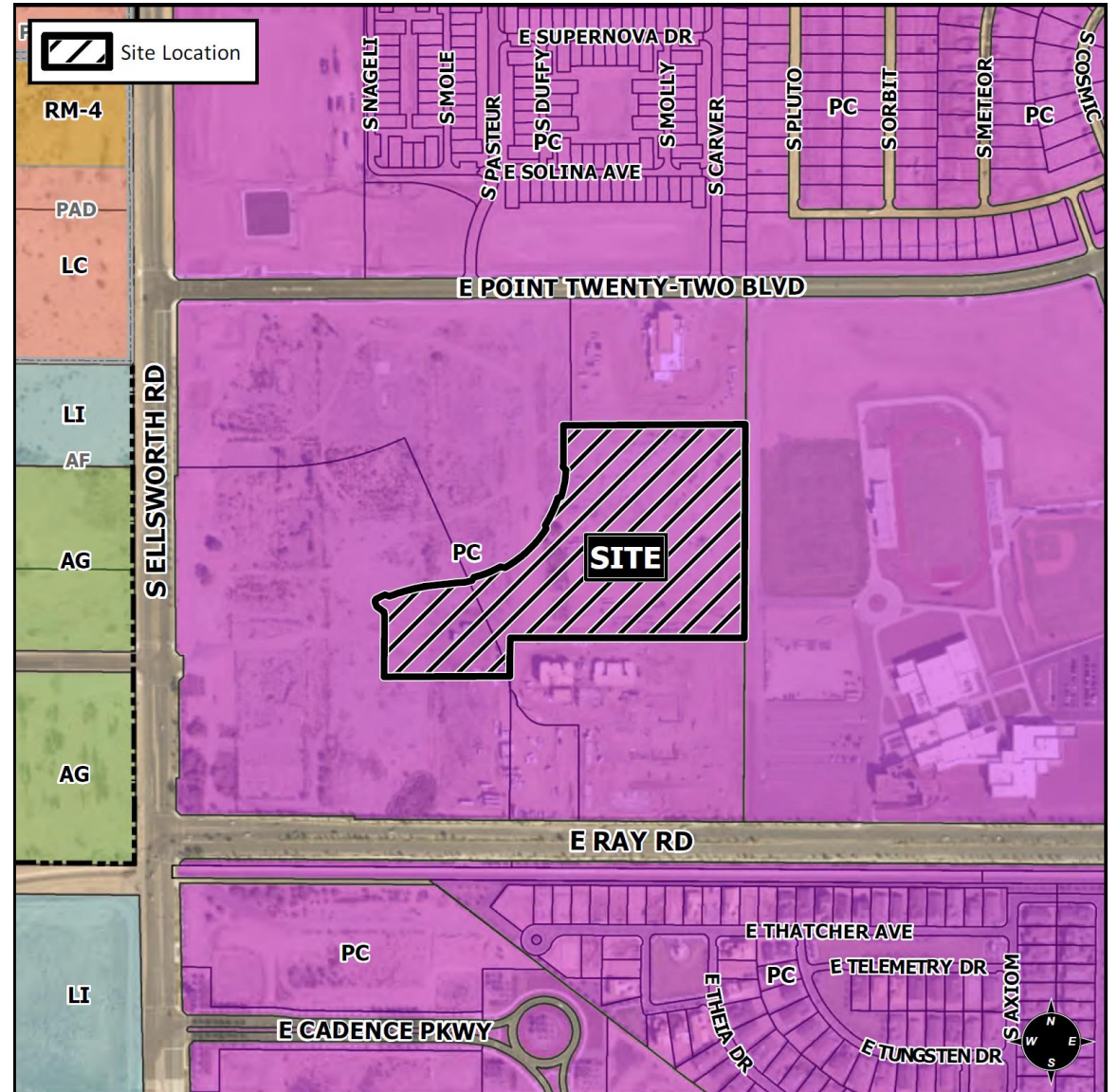


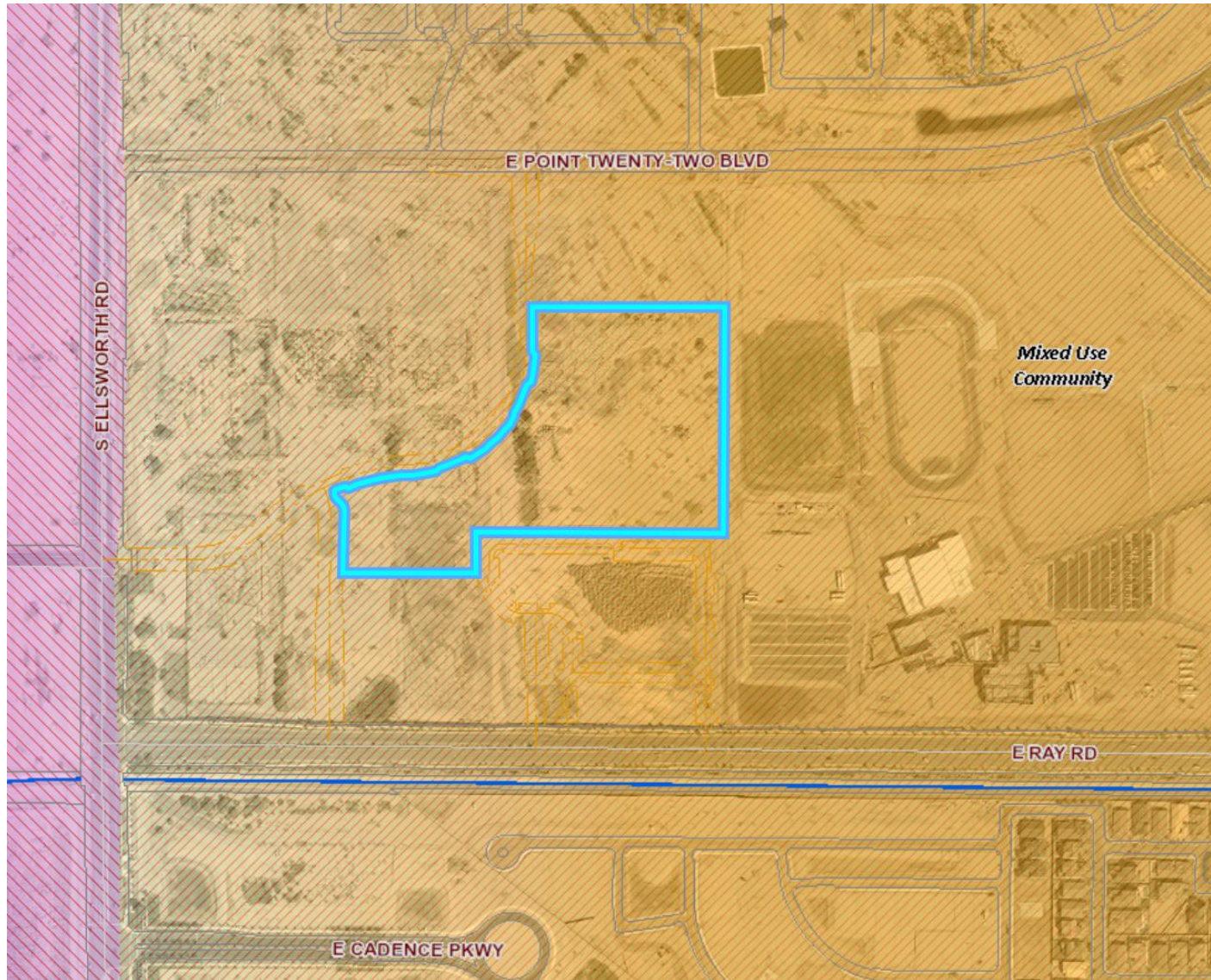


ZON20-00250

Location

- North of Ray Road
- East of Ellsworth Road
- Within Eastmark Community





General Plan

Mixed-Use Community

- Creation of live/work/play community
- Variety of land uses (low to high density residential, commercial, employment, etc.)

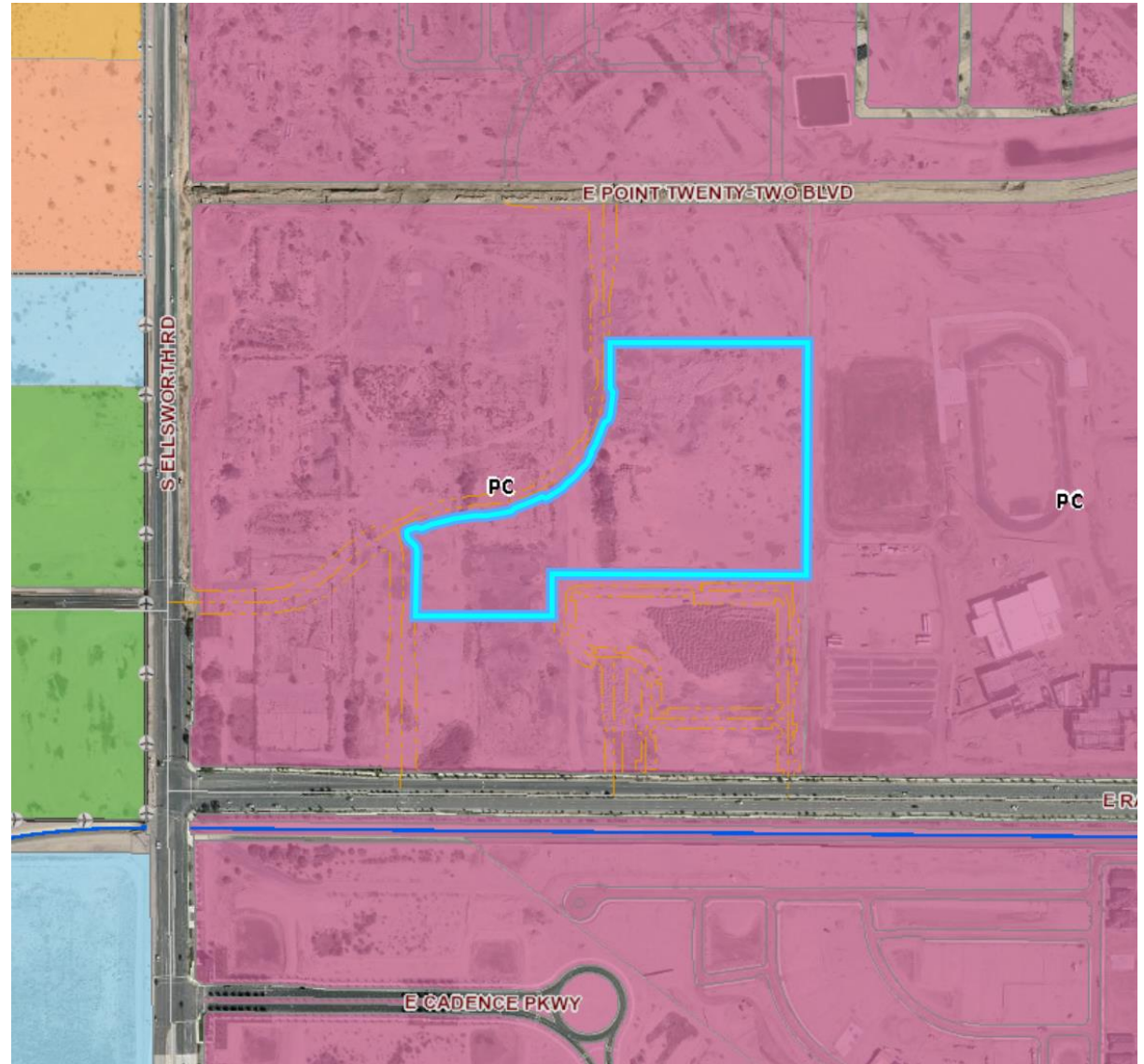
Zoning

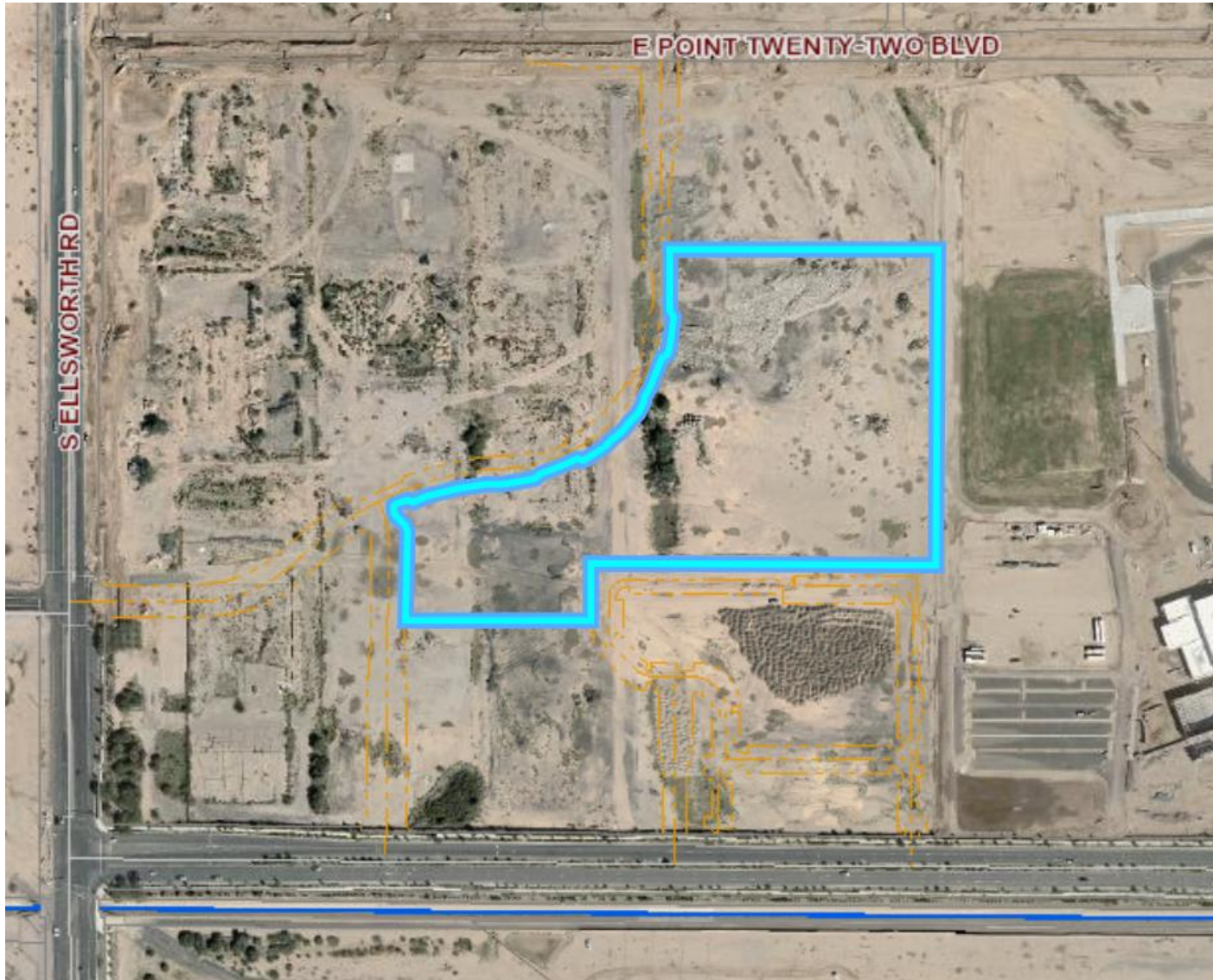
Planned Community (PC)

- Eastmark

Development Unit 3/4 North

- Land Use Group (LUG)
 - General Urban





Request

- Site Plan Review

Purpose

- Allow for a multi-residence development

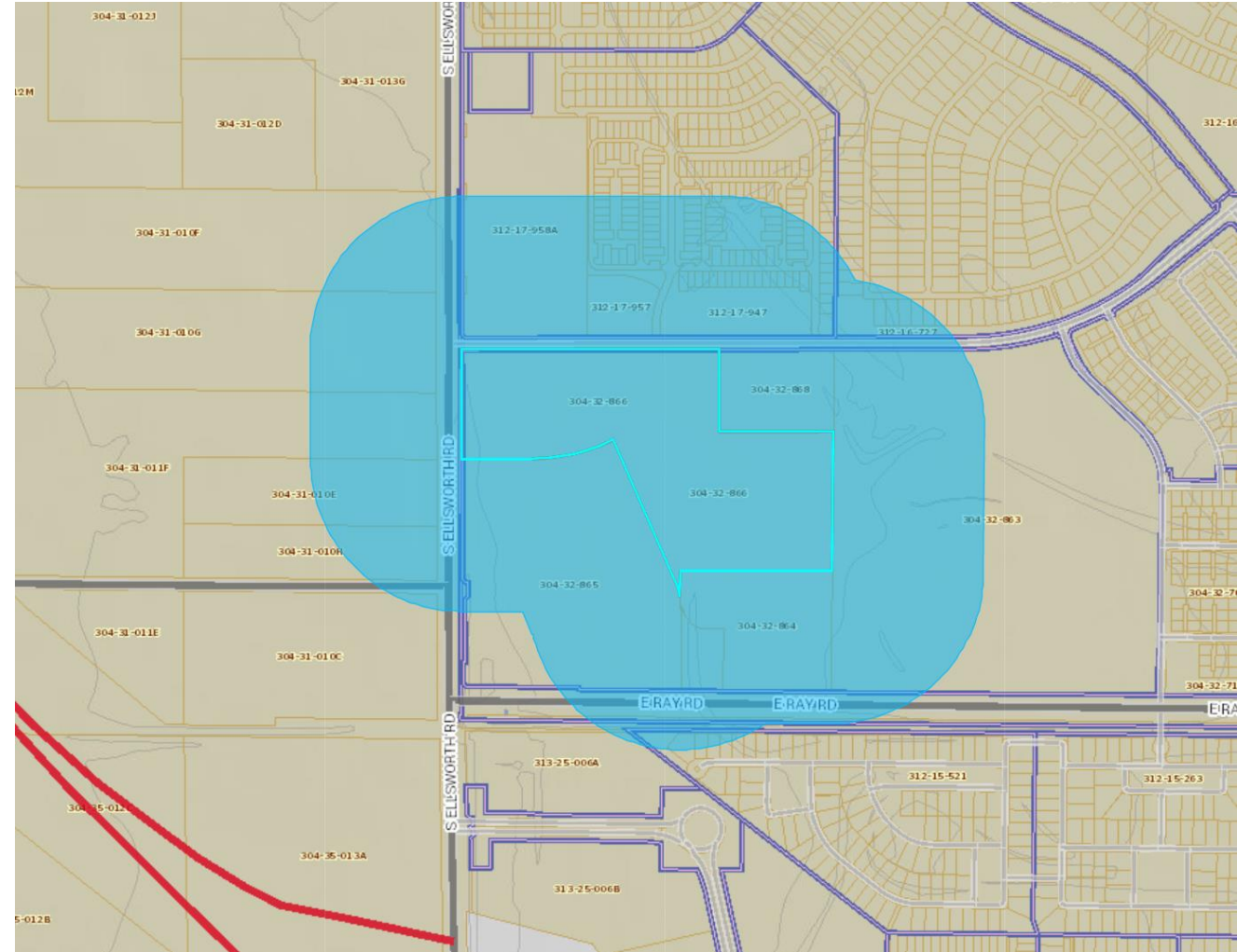
Street View



Looking north along Ray Road

Citizen Participation

- Mailed letters to property owners within 750' of the property
- HOA's within .5 mile of the site
- Staff has not received any neighborhood feedback.





Elevations

- Eastmark Design Review Committee

Summary

Findings

- ✓ Complies with the 2040 Mesa General Plan
- ✓ Complies with the Eastmark Community Plan (CP)
- ✓ Complies with the Development Unit Plan for DU 3/4 North
- ✓ Meets the review criteria for Site Plan Review outlined in Section 6.1 of the Eastmark CP

Staff Recommendation

Approval with Conditions