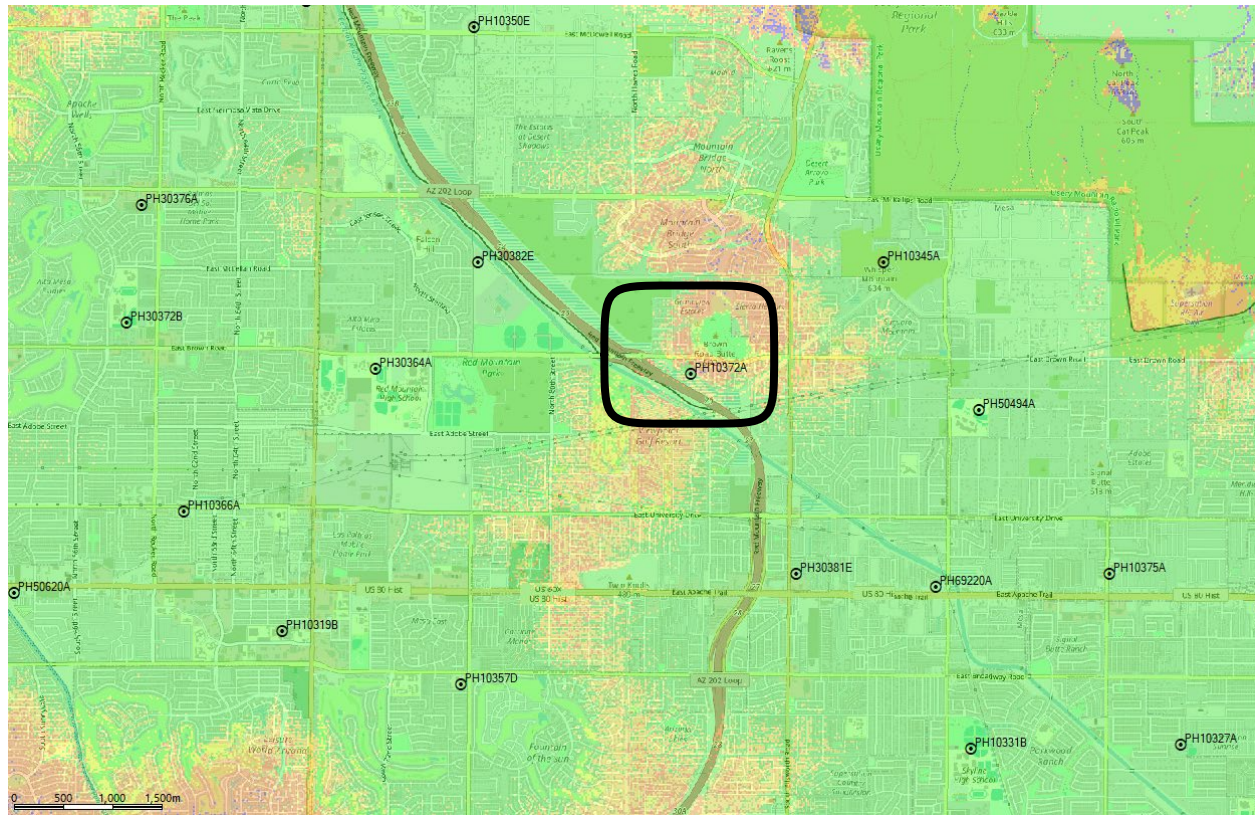


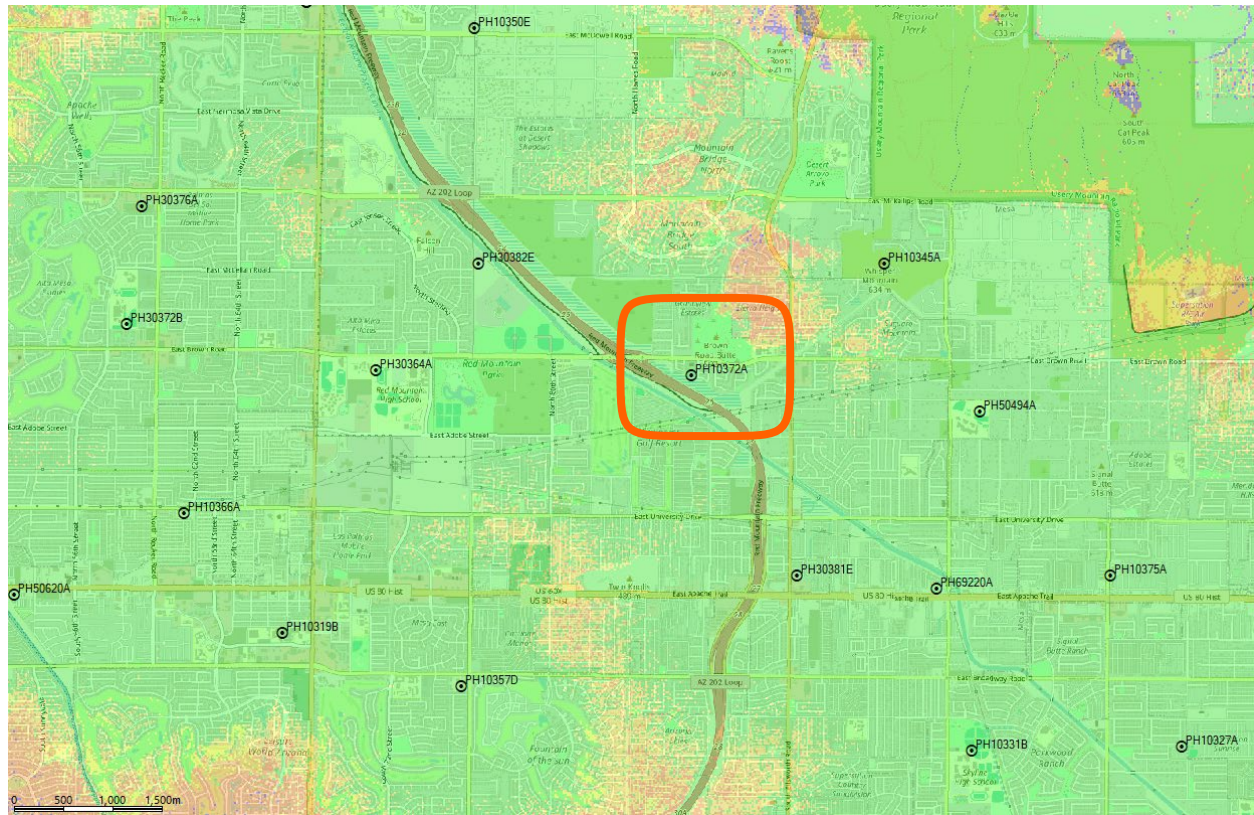
Highlights in Coverage

N25 NR1900MHz Existing Coverage in Area of Map



- Best RSRP
- IBC: -89dBm < RSRP
 - IBR: -94dBm < RSRP < -89dBm
 - In-Vehicle: -102dBm < RSRP < -94dBm
 - Outdoor: -109dBm < RSRP < -102dBm

N25 NR1900MHz Planned Coverage in Area of Map



- Best RSRP
- IBC: -89dBm < RSRP
 - IBR: -94dBm < RSRP < -89dBm
 - In-Vehicle: -102dBm < RSRP < -94dBm
 - Outdoor: -109dBm < RSRP < -102dBm