

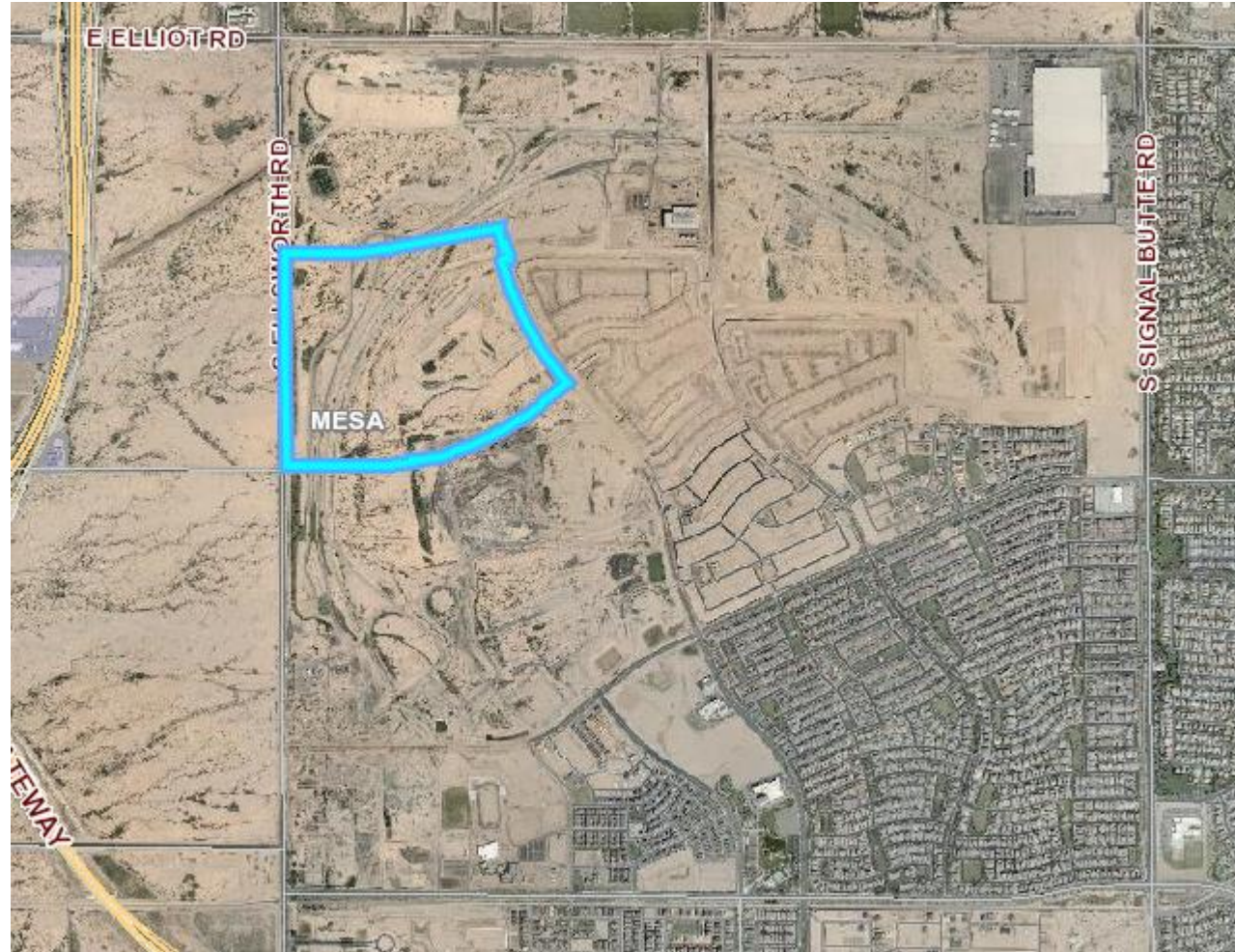


PLANNING & ZONING BOARD

December 16, 2020



ZON20-00560



Request

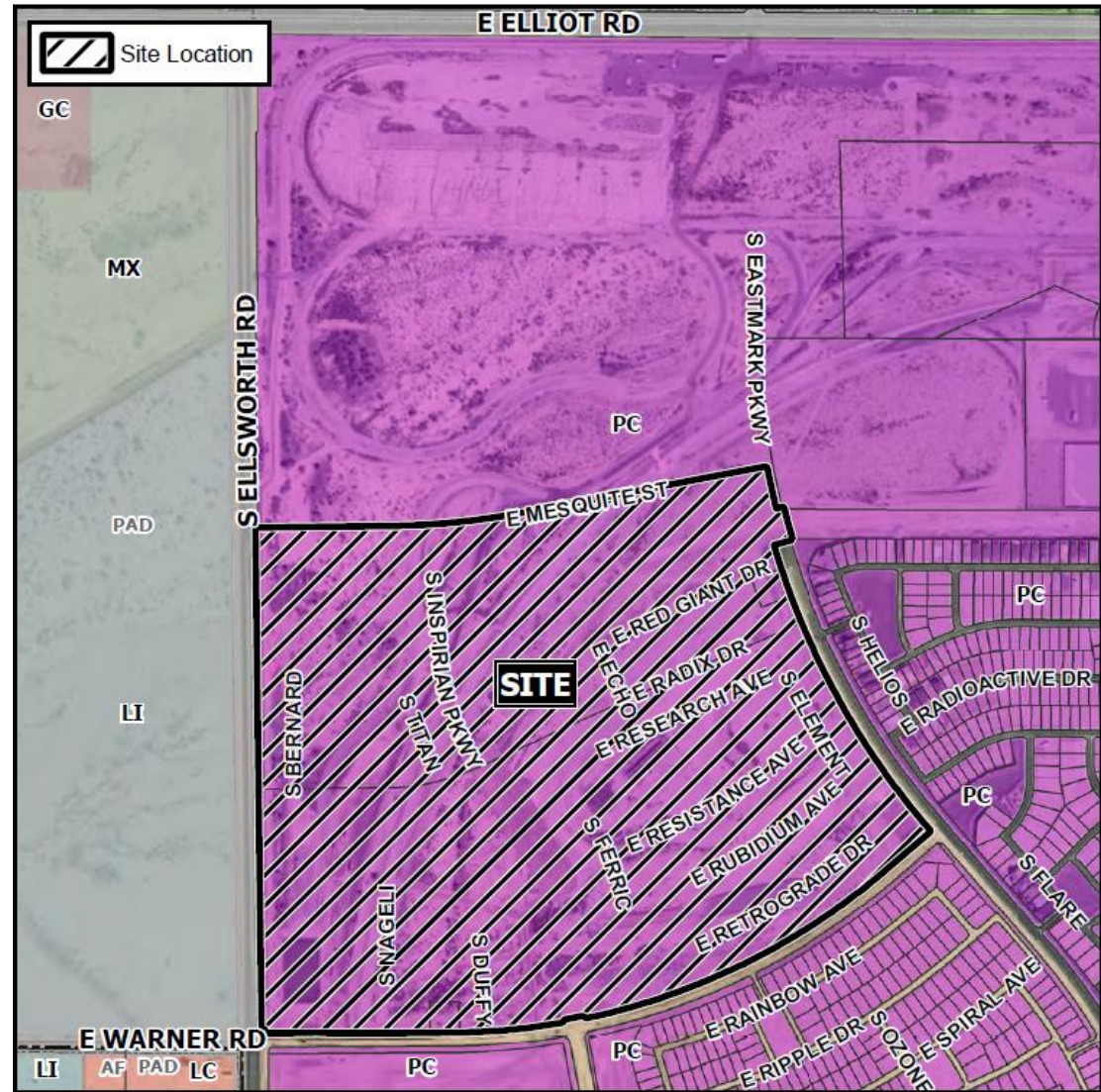
- Preliminary Plat

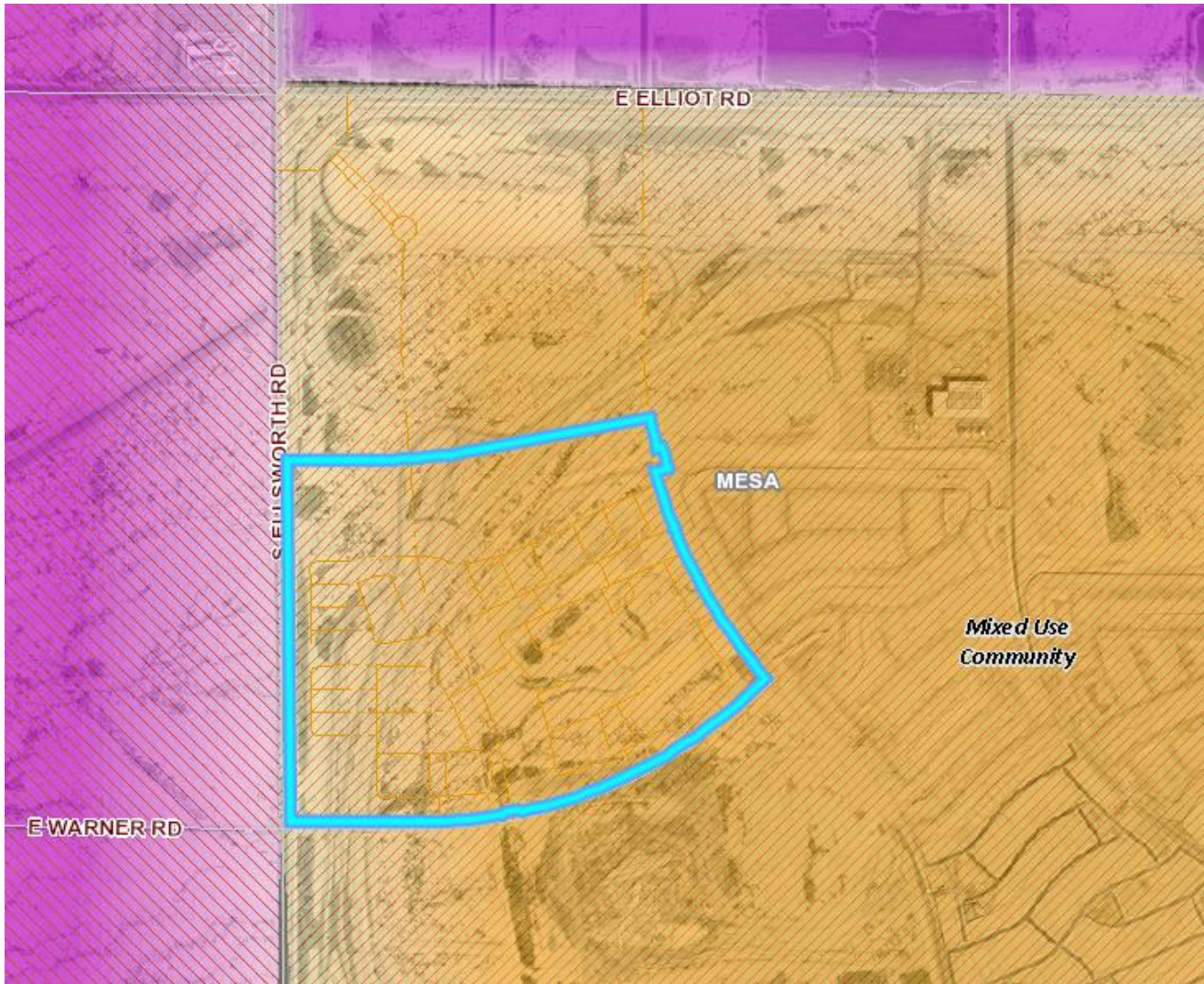
Purpose

- This request will allow the subdivision of land within the Eastmark Community for residential development

Location

- Located south of Elliot Road on the east side of Ellsworth Road





General Plan

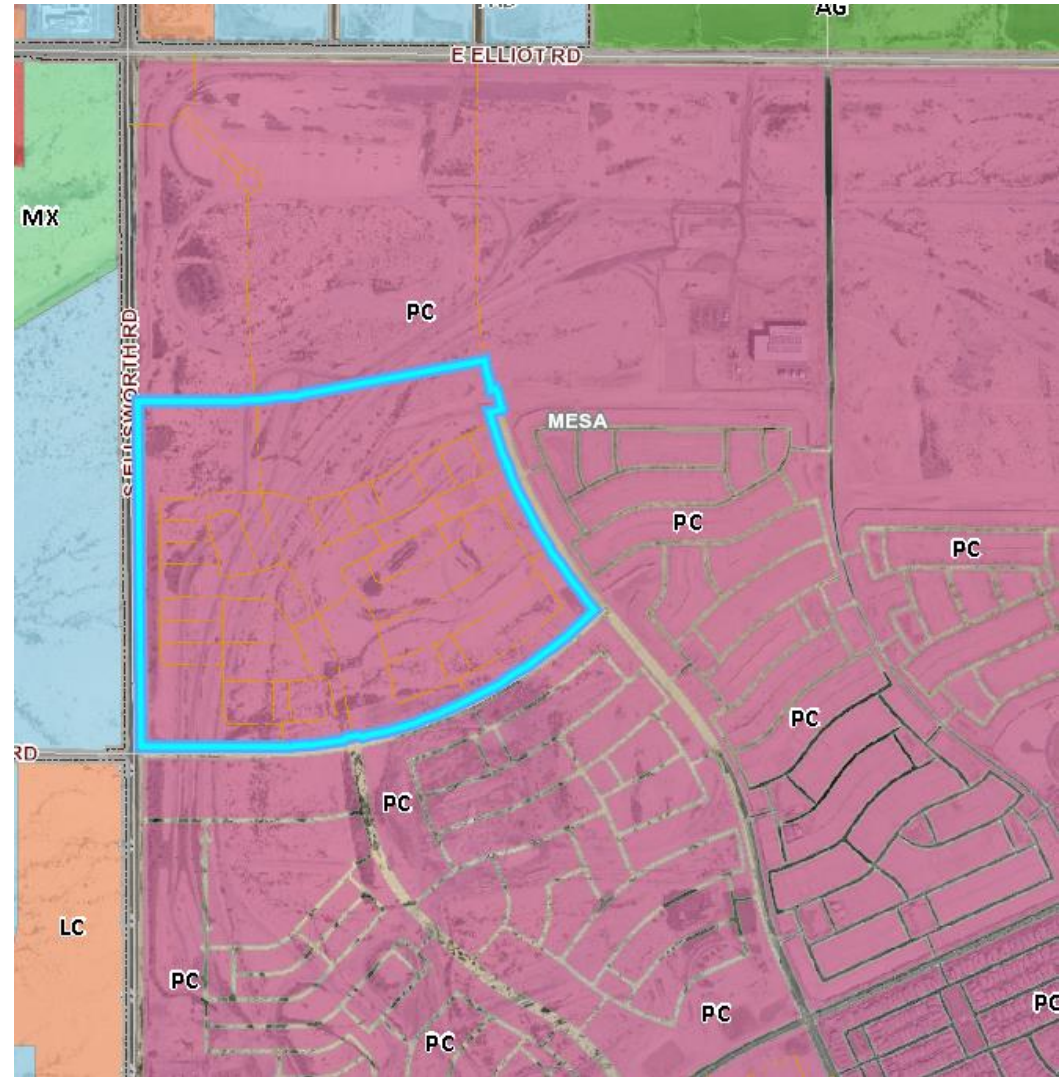
Mixed-Use Community

- Creation of live/work/play community
- Variety of land uses (low to high density residential, commercial, employment, etc.)

Zoning

Planned Community (PC)

- Eastmark
- Development Unit 2



Street View



Looking east from Ellsworth Road

Summary

Findings

- ✓ Complies with the 2040 Mesa General Plan
- ✓ Complies with the Eastmark Community Plan and Development Unit 2 Plan
- ✓ Meets the review criteria for Preliminary Plat outlined in Section 9-6-2 of the Mesa Subdivision Regulations

Staff Recommendation

Approval with Conditions



PLANNING & ZONING BOARD

December 16, 2020