



# Design Review Board



# DRB23-00433

## Circle K at NWC

## Elliot and Signal Butte



# Request

- Design Review
- To allow a service station

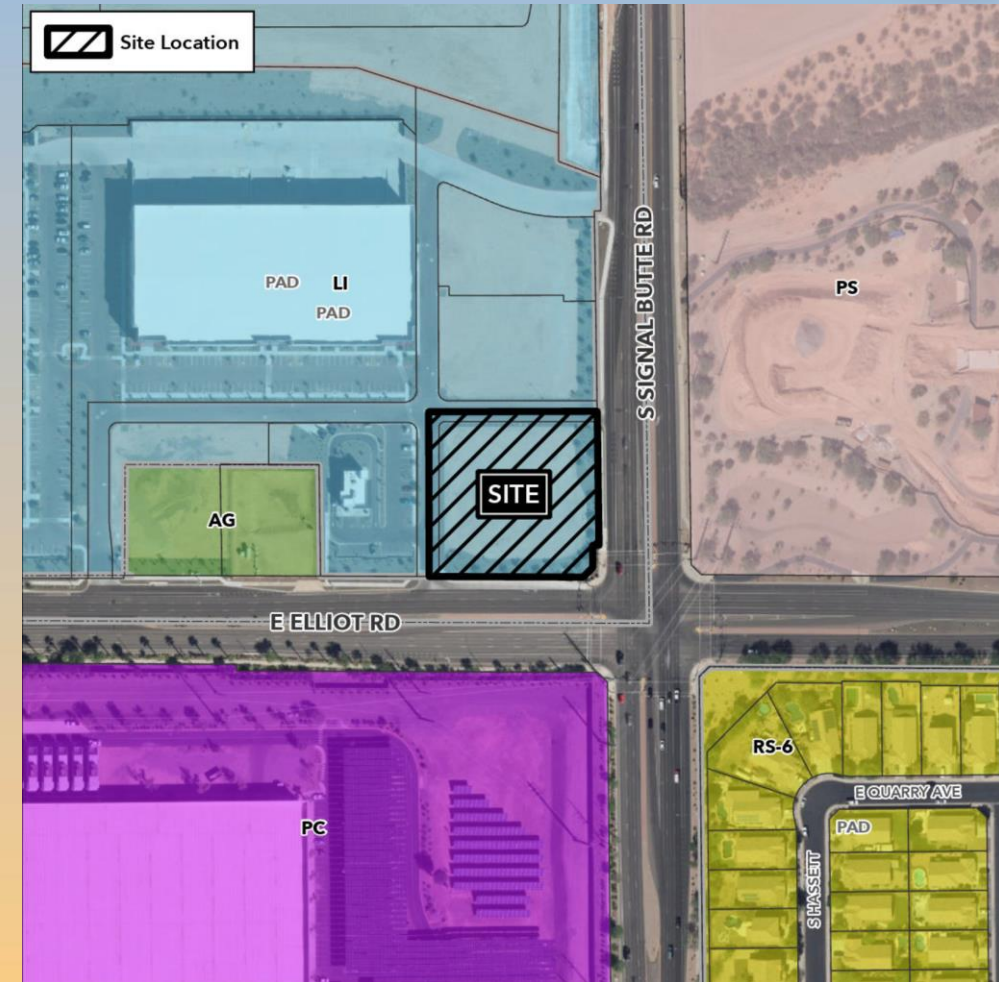






# Location

- Northwest corner of South Signal Butte Road and East Elliot Road







# Site Photo



Looking west from Signal Butte Road





# Site Photo



Looking north from Elliot Road





# Site Photo

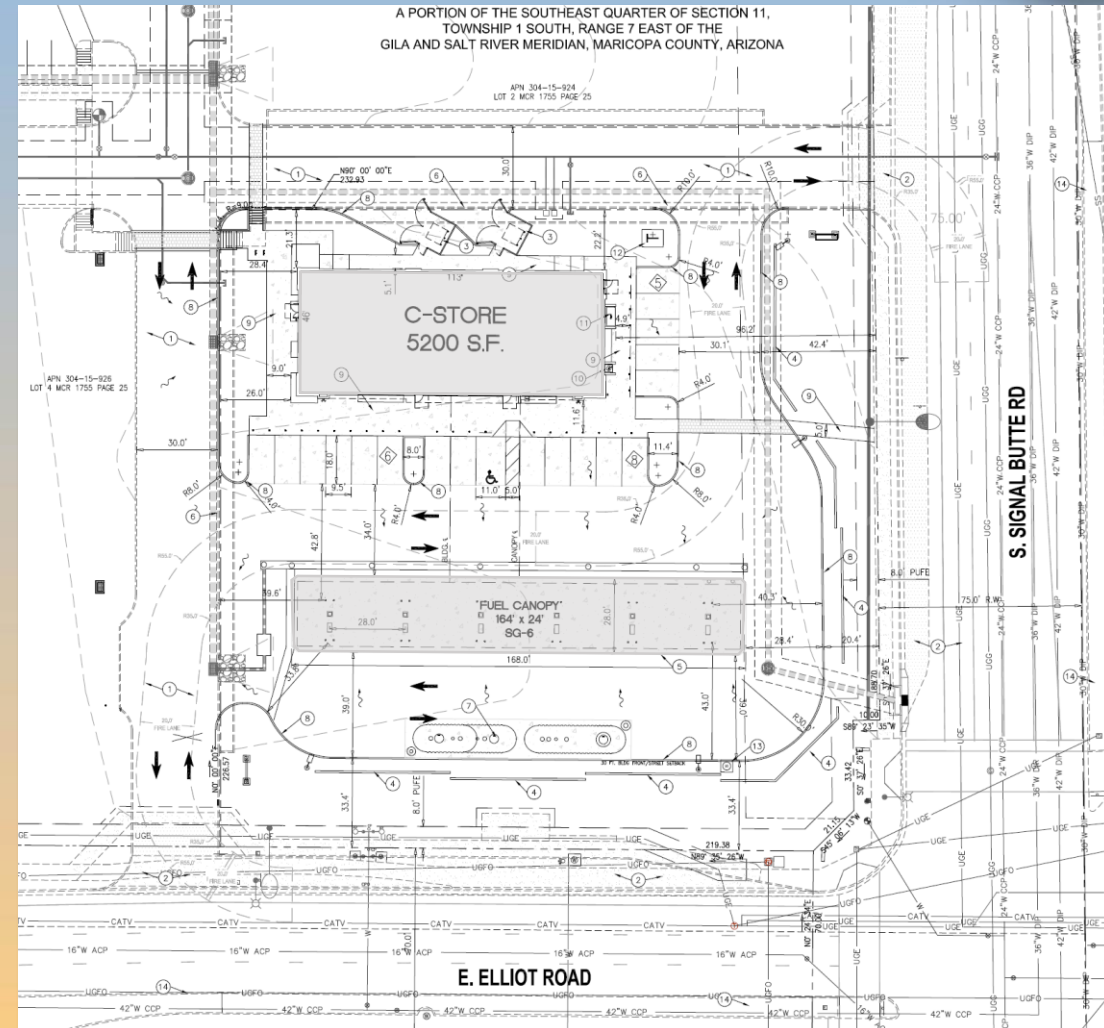


Looking southeast from the northwest corner of the Project Site



# Site Plan

- Building 5,200 sq. ft.
- Canopy 3,936 sq. ft.
- 14 parking spaces required,  
19 parking spaces provided







# Landscape Plan

P L A N T L I S T			
SYMBOL	BOTANICAL NAME COMMON NAME	SIZE QUAN.	REMARKS
	ACACIA SALICINIA WILLOW ACACIA	24" Box 4	10' Ht., 4' Sp., 2" Cal.
	CHILOPSIS LINEARIS 'Art's Seedles' DESERT WILLOW	24" Box 1	7' Ht., 4' Sp., 2" Cal.
	LEUCOPHYLLUM L. 'Rio Bravo' RIO BRAVO SAGE	5 GAL. 23	
	TECOMA STANS YELLOW BELLS	5 GAL. 30	
	MYRTUS COMMUNIS 'COMPACTA' COMPACT MYRTLE	5 GAL. 50	
	LEUCOPHYLLUM ZYGOPHYLLUM BLUE SAGE	5 GAL. 27	
	LANTANA MONTEVIDENSIS 'NEW GOLD' 'NEW GOLD' LANTANA	5 GAL. 19	
	HARDENBERGIA VIOLACEA LILAC VINE	15 GAL. 1	Weave vine into metal lattice - Secure w/ plant ties





DECOMPOSED GRANITE - 3/4" SCREENED, 2" DEPTH IN ALL AREAS OF PLANTING, 'Mahogany'. (Match adjacent street frontage decomposed granite type by Center Developer)

ALL TREES SHALL COMPLY WITH THE LATEST AMENDED EDITION OF THE 'ARIZONA NURSERY ASSOCIATION - RECOMMENDED TREE SPECIFICATIONS.'

PROPOSED LANDSCAPE AREA BY CENTER DEVELOPER (Perimeter landscape adjacent to Elliot and Signal Butte Roads is to be installed under the City of Mesa approved plan PMT22-02406)

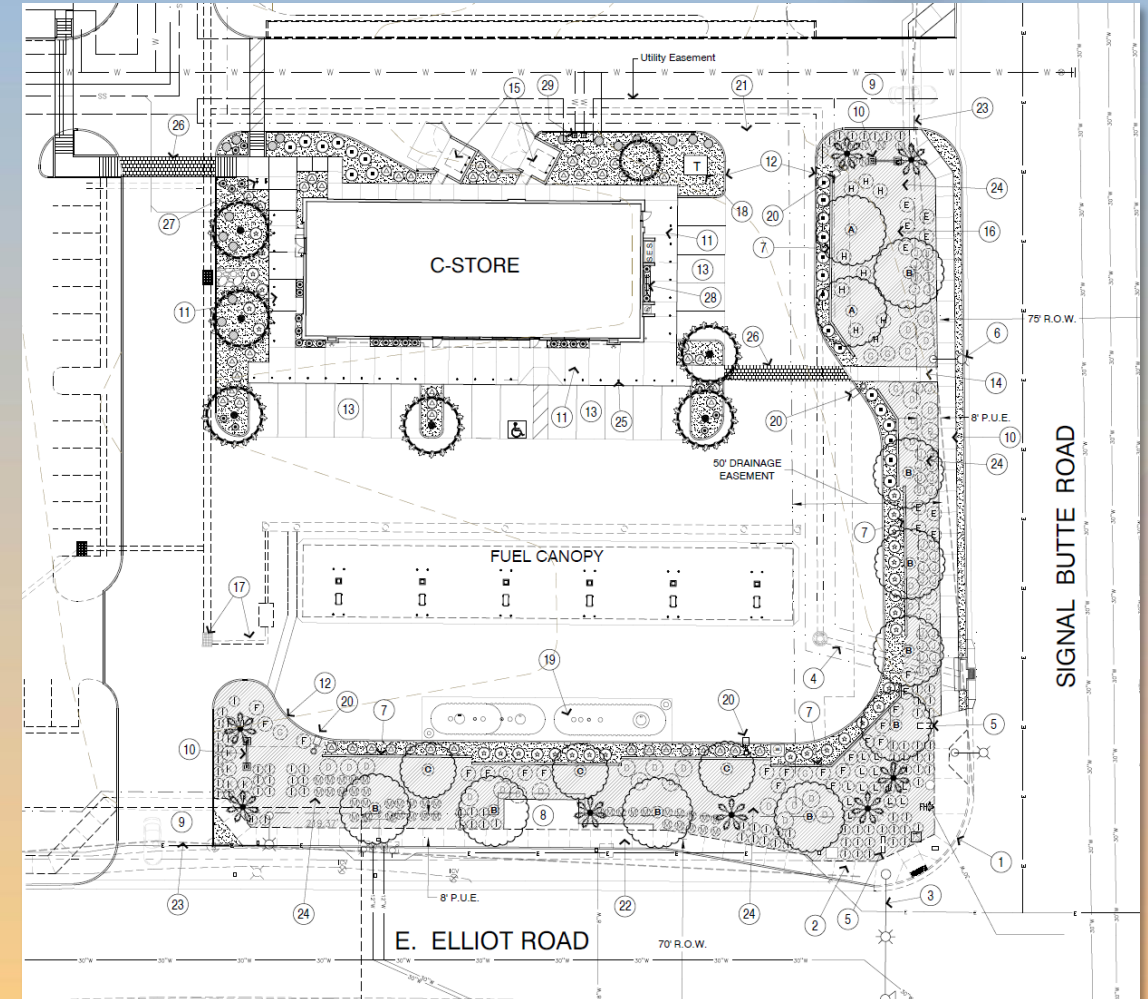
## EXISTING PLANT MATERIAL LEGEND (Proposed by Center Developer)

### TREES

-  (A) PARKINSONIA 'DESERT MUSEUM'  
Desert Museum Palo Verde
-  (B) PROSOPIS ALBA 'COOPERI'  
Cooper's Thornless Mesquite
-  (C) EBENOPSIS EBANO  
Texas Ebony
-  WASHINGTONIA 'Hybrid'  
Mexican Fan Palm 'Hybrid'

### SHRUBS

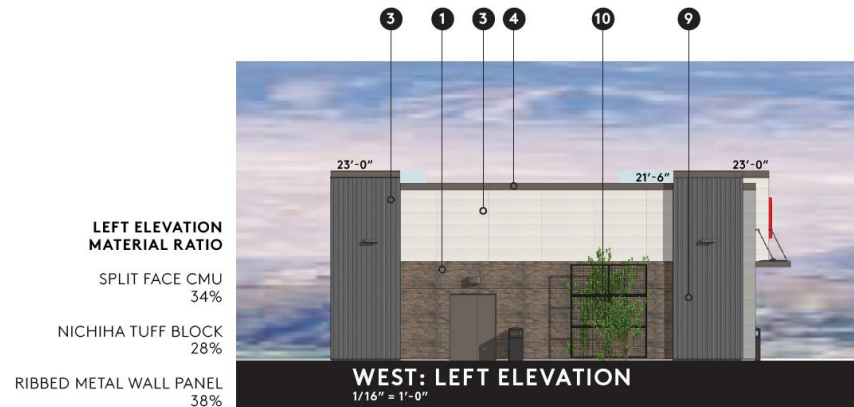
- (D) CORDIA PARVIFOLIA
- (E) LEUCOPHYLLUM 'Heavenly Cloud'
- (F) TECOMA 'Orange Jubilee'
- (G) CAESALPINIA GILLIESII
- (H) BOUGAINVILLEA 'Torch Glow'
- (I) LANTANA 'New Gold'
- (J) LANTANA 'Red'
- (K) HESPERALOE FUNIFERA
- (L) AGAVE MURPHYI
- (M) YUCCA RUPICOLA
- (N) DASYLIRON WHEELERI





# Elevations

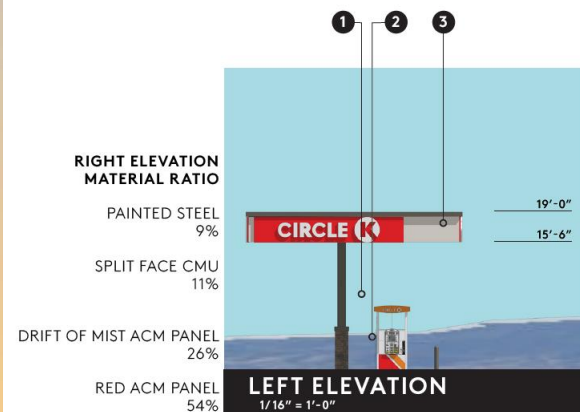
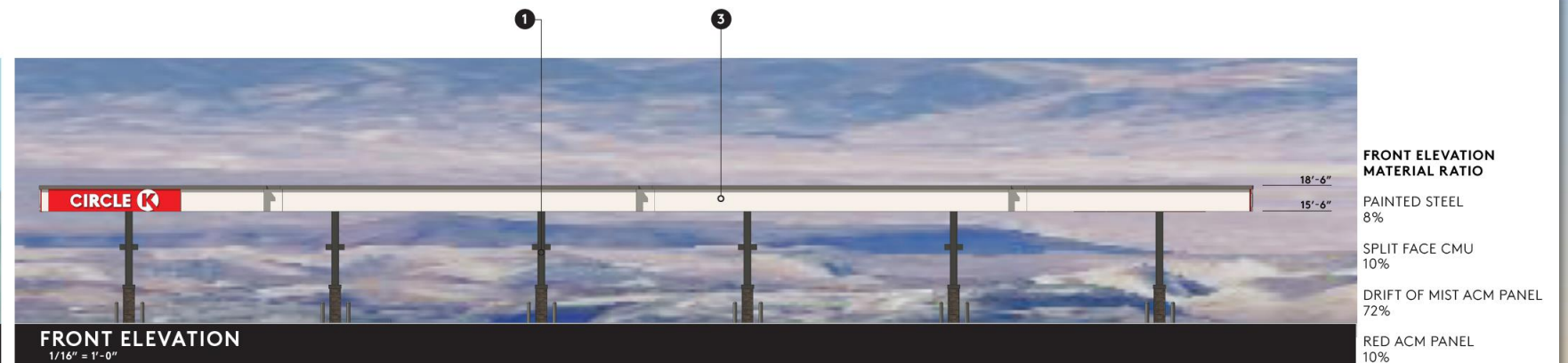
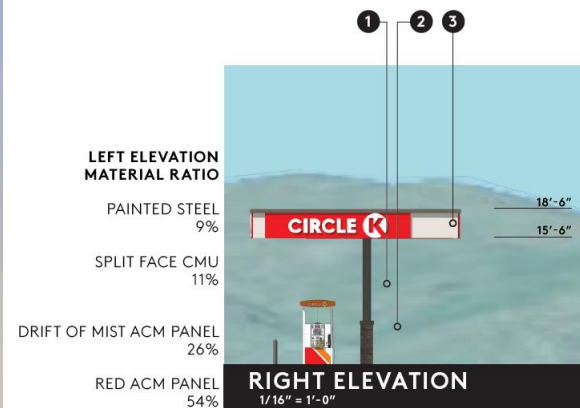
6







# Elevations





# Rendering







# Rendering







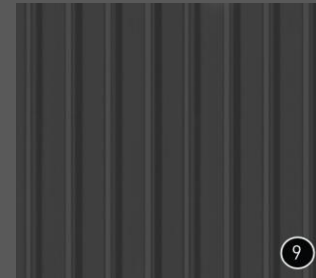
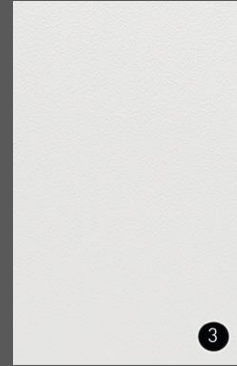
# Rendering







# Colors and Materials



**rdc.**

Architecture | Planning | Interiors

CIRCLE K  
ELLIOT RD + SIGNAL BUTTE RD  
MESA, ARIZONA

## MATERIAL LEGEND

- ① Manufacturer: OLD CASTLE SUPERLITE  
Product: ECHELON SPLIT FACE CMU  
Color: BLACK CANYON
- ② Manufacturer: NICHHA  
Product: TUFF BLOCK  
Color: SW 7658 GRAY CLOUDS
- ③ Manufacturer: NICHHA  
Product: TUFF BLOCK  
Color: SW 9166 DRIFT OF MIST
- ④ METAL COPING / FASCIA  
Color: SW 7660 EARL GREY
- ⑤ INSULATED CLEAR GLASS
- ⑥ ANNOIDIZED WINDOW FRAMING  
Color: DARK BRONZE
- ⑦ ALUMINUM AWNING  
Color: SW 7660 EARL GREY
- ⑧ SPANDREL GLASS
- ⑨ Manufacturer: McELROY  
Product: RIBBED METAL PANEL  
Color: CHARCOAL
- ⑩ Manufacturer: McNICHOLS  
Product: METAL GREEN SCREEN  
Color: DARK BRONZE



# Findings

Staff is seeking your review and recommendation on the following:

- ✓ Proposed building elevations and landscape design

***Staff welcomes any feedback***





# Design Review Board