

City of Mesa

Design Review Board

ZON26-00419
Longbow Mixed-Use

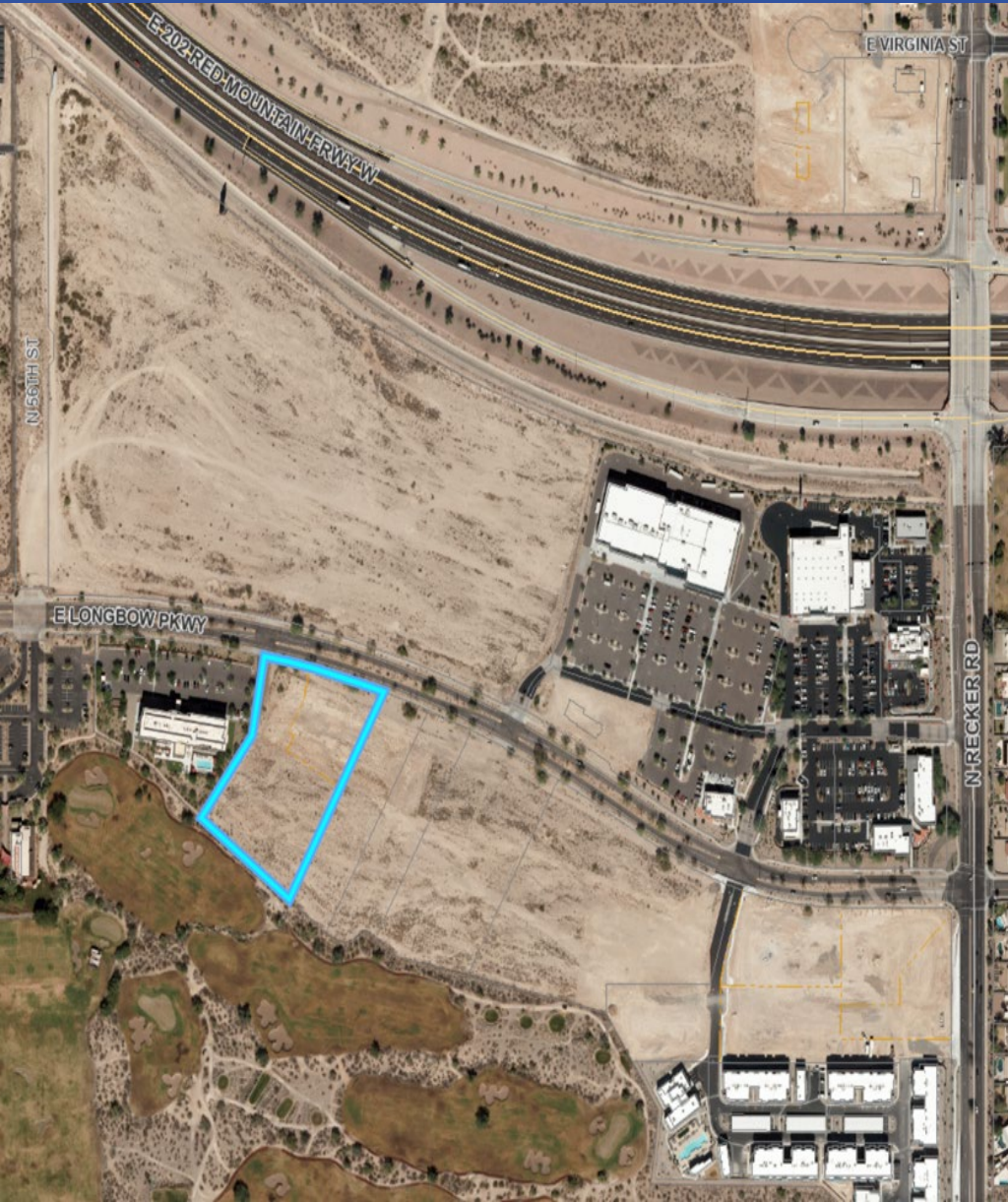
Cassidy Welch, Principal Planner



Request

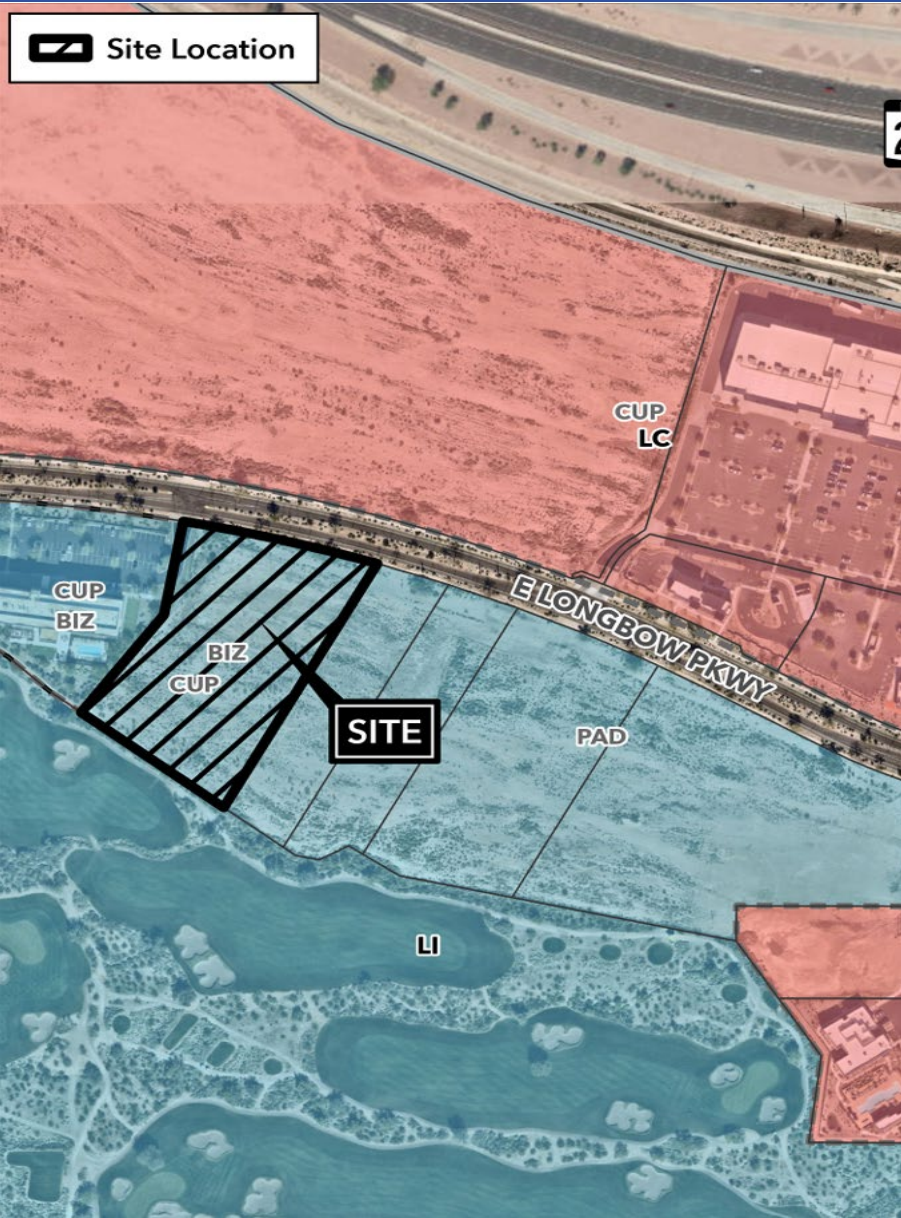
- Design Review
- Alternative Compliance
- To allow for a 58, 590± square foot Hotel and future commercial development





Location

- 3.3± acres
- South of Loop 202 Freeway
- West of Recker Road
- South of Longbow Parkway



Zoning

- Light Industrial with a Planned Area Development Overlay (LI-PAD)
- Within the Longbow Business Park PAD

Site Photos



Looking south towards the site



Previous Approval





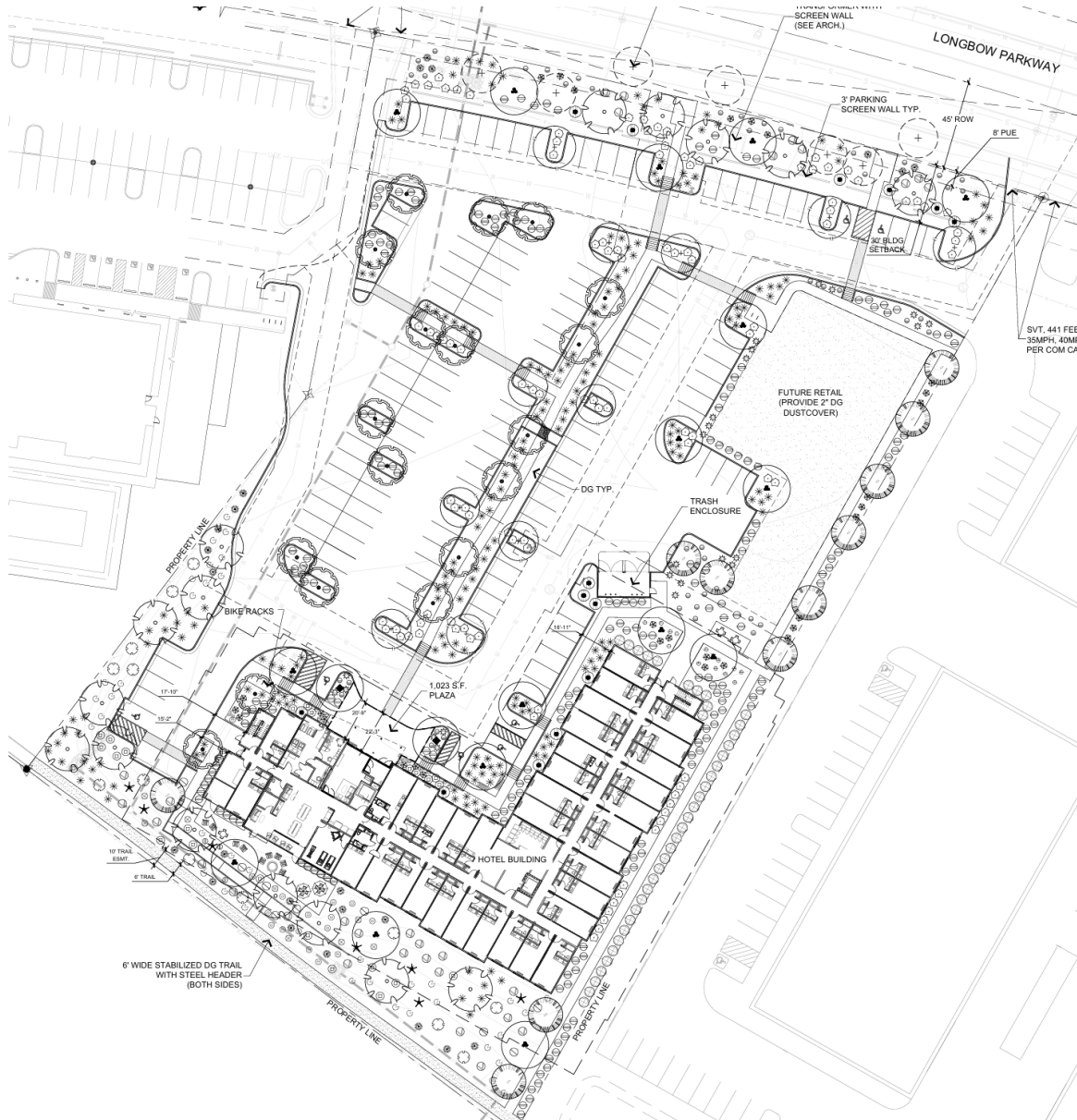
Site Plan

- 58,590± square feet
- 3 stories
- 124 rooms
- 2 access points onto Longbow Parkway
- Future commercial development



Alternative Compliance

- ✓ A maximum of two (2) rows of required off-street parking may be located between the building and adjacent street.



Landscape Plan

- Trees: Mulga, Palo Brea, Desert Willow, Ironwood, etc.
- Shrubs: Mexican Honeysuckle, Texas Sage, Creosote Bush, etc.



Elevations



2 SOUTH ELEVATION



1 NORTH ELEVATION

1/8" = 1'-0"



Elevations

2 EAST ELEVATION
1/8" = 1'-0"



1 WEST ELEVATION
1/8" = 1'-0"





Renderings





Renderings

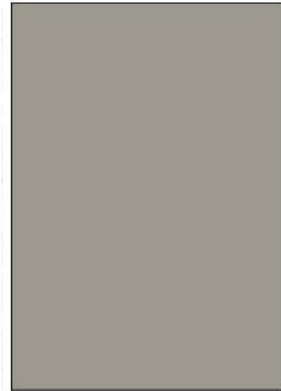




Materials & Colors



EL DORADO STONE
MADRONA
"CUT COARSE STONE"



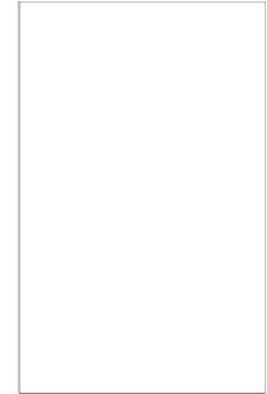
STUCCO, SMOOTH
SW 9170
"ACIER"



CEMENT BOARD
SW 7068
"GRIZZLE GRAY"



CEMENT BOARD
WOODTONE
"WINCHESTER BROWN"



ROOFING
WHITE TPO



Citizen Participation

- Staff received 1 comment from adjacent property owner with the following comments:
 - Exterior AC vents
 - Materials
 - Acoustic windows



Staff Recommendation

Approval with conditions

City of Mesa

Design Review Board