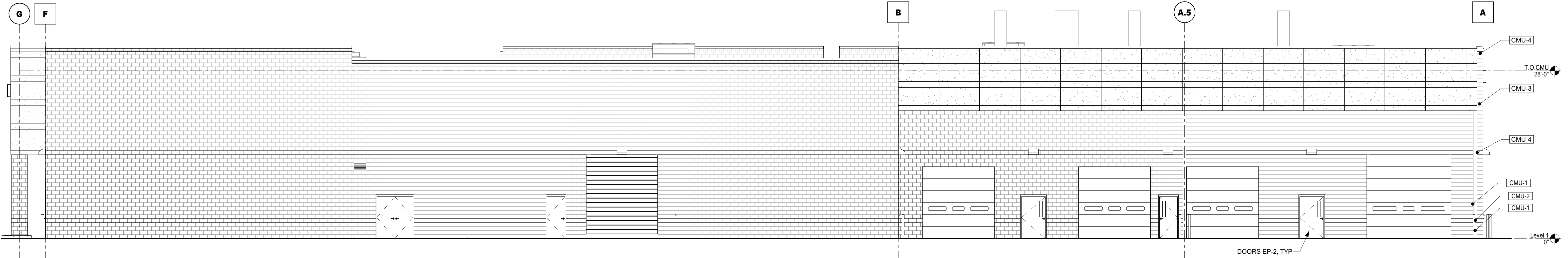
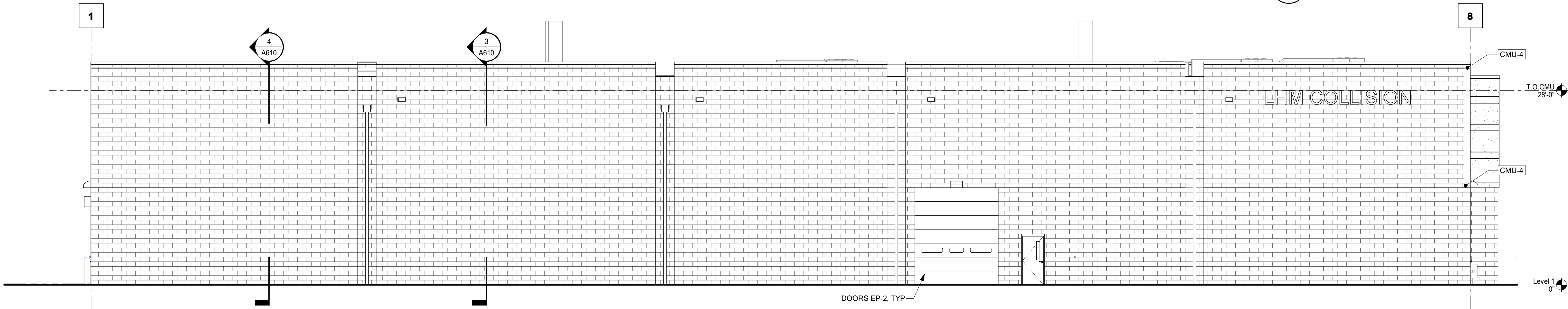


Exterior Finish Schedule

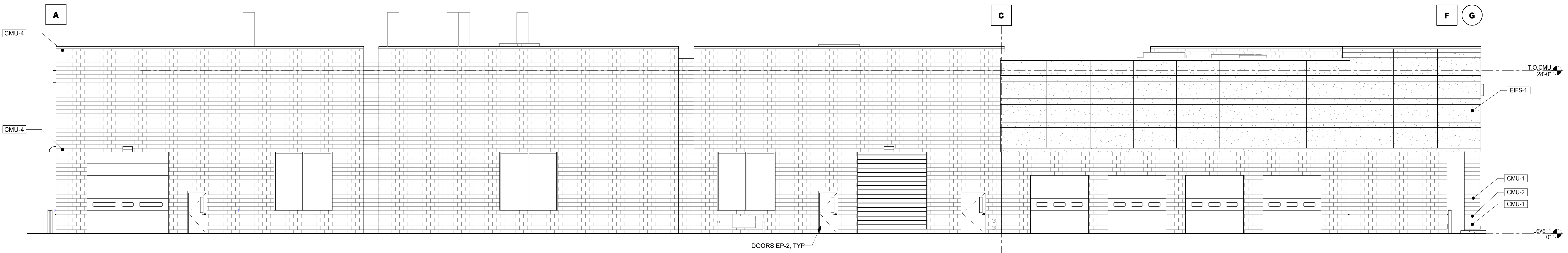
CODE	MATERIAL	MANUFACTURER	PATTERN	COLOR	REMARKS / LOCATION
EP-1	EXTERIOR PAINT SYSTEM	BENJAMIN MOORE	-	2132-70 MINERAL ICE	FIELD COLOR; WALL MOUNTED ELECTRICAL FIXTURES TO MATCH
EP-2	EXTERIOR PAINT SYSTEM	BENJAMIN MOORE	-	2121-20 STEEL WOOL	ACCENT STRIP; DOORS, FRAMES; BOLLARDS; WALL MOUNTED ELECTRICAL FIXTURES TO MATCH
CMU-1	CONCRETE BLOCK	LOCAL MANUFACTURER	SPLIT FACE	PAINT WITH ELASTOMERIC COATING TO MATCH EP-2	EXTERIOR WALLS
CMU-2	CONCRETE BLOCK	LOCAL MANUFACTURER	SMOOTH FACE	PAINT WITH ELASTOMERIC COATING TO MATCH EP-2	ACCENT STRIP
CMU-3	CONCRETE BLOCK	LOCAL MANUFACTURER	SPLIT FACE	PAINT WITH ELASTOMERIC COATING TO MATCH EP-1	EXTERIOR WALLS
CMU-4	CONCRETE BLOCK	LOCAL MANUFACTURER	SMOOTH FACE	PAINT WITH ELASTOMERIC COATING TO MATCH EP-1	ACCENT STRIP
MC-1	METAL PARAPET COPING	ARCHITECTURAL PRODUCTS, CO.	ALUMINUM	MATCH EP-1	PARAPET
EIFS-1	EXTERIOR INSULATED FINISH SYSTEM	STO CORP	SANDPEBBLE FINE FINISH	MATCH EP-1	ENTRY AREAS
DEFS-1	DIRECT-APPLIED EXTERIOR FINISH...	STO CORP	SANDPEBBLE FINE FINISH	MATCH EP-1	ENTRY CANOPY SOFFIT
DS-1	DOWNSPOUTS	SEE SPEC	SEE ELEVATIONS	MATCH EP-2	NORTH FACADE
SF-1	STORE FRONT SYSTEM	KAWNEER	ALUMINUM	CLEAR ANODIZED	ENTRANCE; EXTERIOR WINDOWS



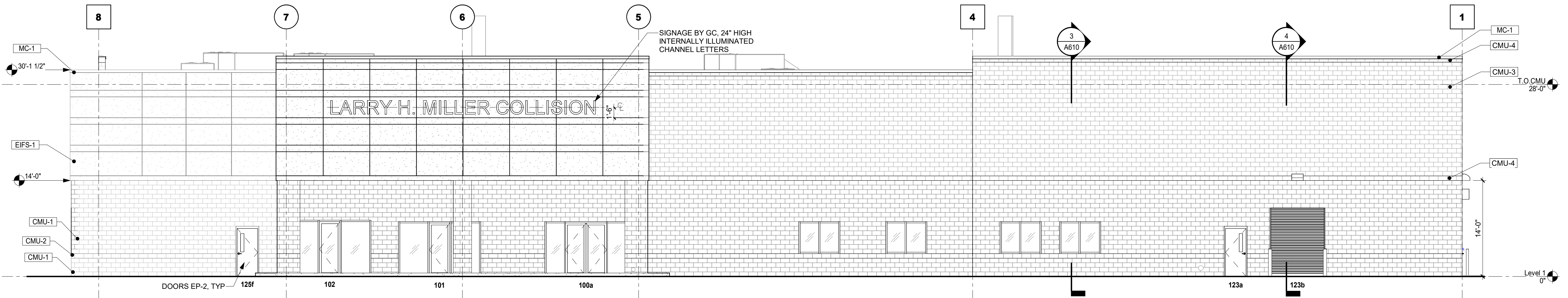
4 East Elevation
A400
1/8" = 1'-0"



3 North Elevation
A400
1/8" = 1'-0"



2 West Elevation
A400
1/8" = 1'-0"



1 South Elevation
A400
1/8" = 1'-0"

PRAXIS3

100 Peachtree St NW
Suite 1450
Atlanta, GA 30303

404-875-4500 tel
www.praxis3.com

NOT
RELEASED FOR
CONSTRUCTION OR
PERMIT

Copyright (c) 2023 Praxis3, LLC
All reports, plans, specifications, computer files, field data, notes and other documents
and instruments prepared by Praxis3 shall retain all copyright law, statutory and other
inherent rights, including copyright. No part of this drawing may be reproduced in whole or in part without written permission of
Praxis3, LLC. It is to be returned upon request. Scale as noted are valid on the original
drawing.

Rev	Date	Comments
05.15.23	05.15.23	SD Set
06.08.23	06.08.23	30% Set Update
06.20.23	06.20.23	60% SET
08.01.23	08.01.23	90% SET

Client:

Asbury Automotive
Group

2905 Premiere Parkway Suite 300
Duluth, GA 30097

Project Number: 22190
Project Name:

Larry H. Miller
Collision

460 E Auto Center Drive
Mesa, AZ 85206

Key Plan:

Sheet Title:

Exterior
Elevations

Sheet Number:

A400

Exterior Finish Schedule

CODE	MATERIAL	MANUFACTURER	PATTERN	COLOR	REMARKS / LOCATION
EP-1	EXTERIOR PAINT SYSTEM	BENJAMIN MOORE	-	2132-70 MINERAL ICE	FIELD COLOR; WALL MOUNTED ELECTRICAL FIXTURES TO MATCH
EP-2	EXTERIOR PAINT SYSTEM	BENJAMIN MOORE	-	2121-20 STEEL WOOL	ACCENT STRIP; DOORS, FRAMES, BOLLARDS; WALL MOUNTED ELECTRICAL FIXTURES TO MATCH
CMU-1	CONCRETE BLOCK	LOCAL MANUFACTURER	SPLIT FACE	PAINT WITH ELASTOMERIC COATING TO MATCH EP-2	EXTERIOR WALLS
CMU-2	CONCRETE BLOCK	LOCAL MANUFACTURER	SMOOTH FACE	PAINT WITH ELASTOMERIC COATING TO MATCH EP-2	ACCENT STRIP
CMU-3	CONCRETE BLOCK	LOCAL MANUFACTURER	SPLIT FACE	PAINT WITH ELASTOMERIC COATING TO MATCH EP-1	EXTERIOR WALLS
CMU-4	CONCRETE BLOCK	LOCAL MANUFACTURER	SMOOTH FACE	PAINT WITH ELASTOMERIC COATING TO MATCH EP-1	ACCENT STRIP
MC-1	METAL PARAPET COPING	ARCHITECTURAL PRODUCTS, CO.	ALUMINUM	MATCH EP-1	PARAPET
EIFS-1	EXTERIOR INSULATED FINISH SYSTEM	STO CORP	SANDPEBBLE FINE FINISH	MATCH EP-1	ENTRY AREAS
DEFS-1	DIRECT-APPLIED EXTERIOR FINISH...	STO CORP	SANDPEBBLE FINE FINISH	MATCH EP-1	ENTRY CANOPY SOFFIT
DS-1	DOWNSPOUTS	SEE SPEC	SEE ELEVATIONS	MATCH EP-2	NORTH FACADE
SF-1	STORE FRONT SYSTEM	KAWNEER	ALUMINUM	CLEAR ANODIZED	ENTRANCE; EXTERIOR WINDOWS



Copyright (c) 2023 Praxis3, LLC
All reports, plans, specifications, computer files, field data, notes and other documents
and instruments prepared by Praxis3 shall retain all copyright law, statutory and other
inherent rights, including copyright therein.
This drawing may not be reproduced in whole or in part without written permission of
Praxis3. It is to be returned upon request. Dates as noted are valid on the original
drawing.

Rev	Date	Comments
	07.14.23	DRB Submittal

Client:
Asbury Automotive Group

2905 Premiere Parkway Suite 300
Duluth, GA 30097

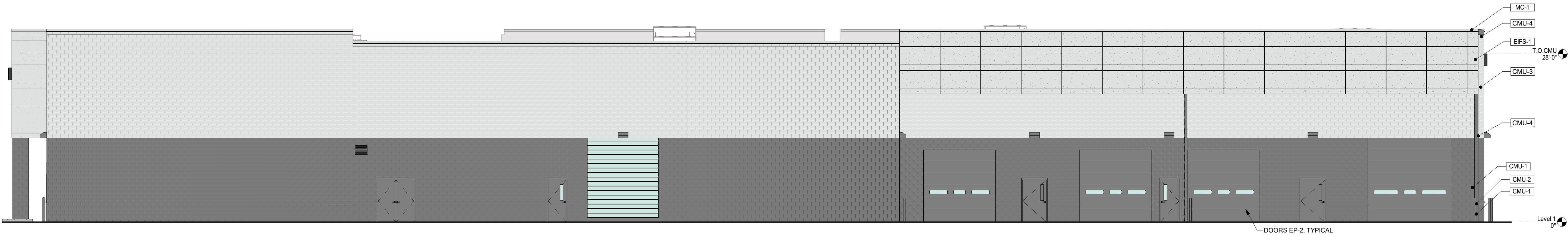
Project Number: 22190
Project Name:
Larry H. Miller Collision

460 E Auto Center Drive
Mesa, AZ 85206

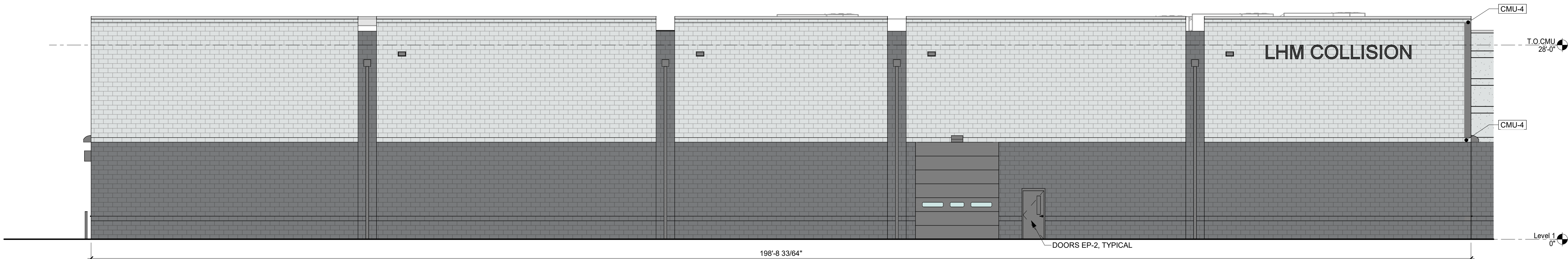
Key Plan:

Sheet Title:
Exterior Elevations

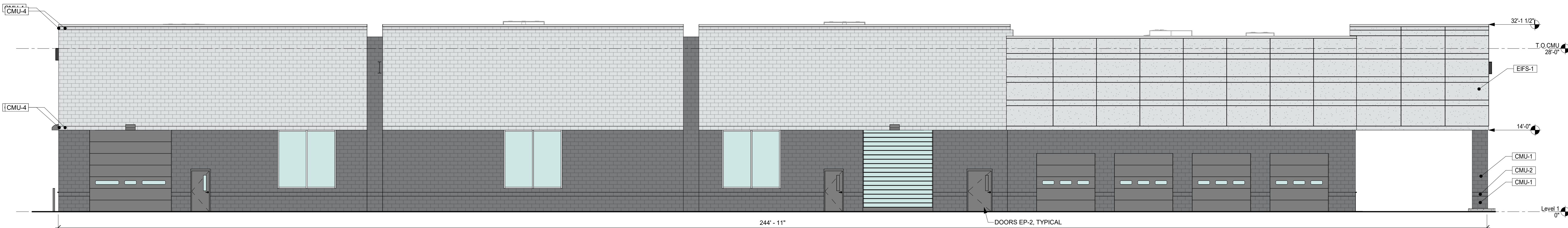
Sheet Number:
A401



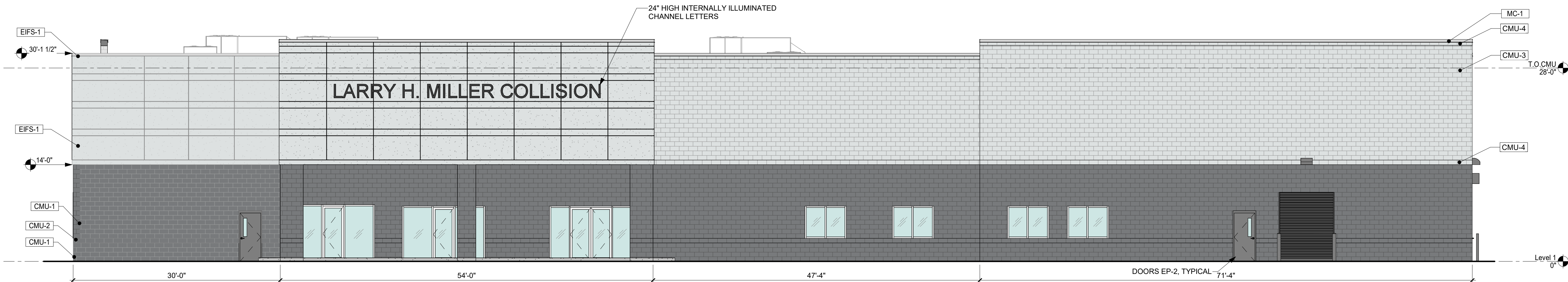
2 East Elevation
1/8" = 1'-0"



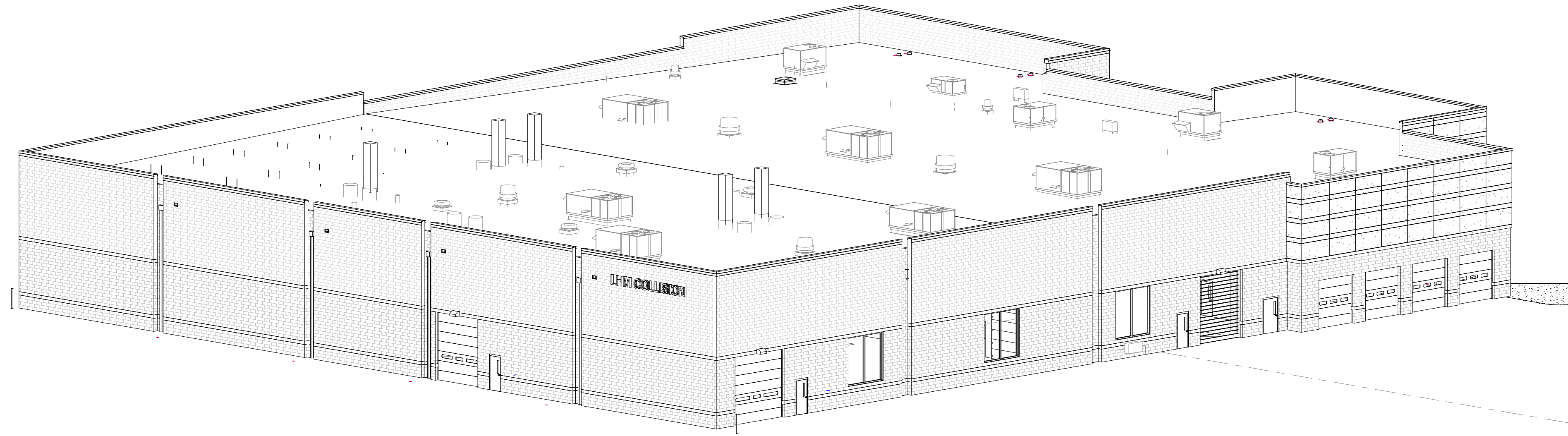
1 North Elevation
1/8" = 1'-0"



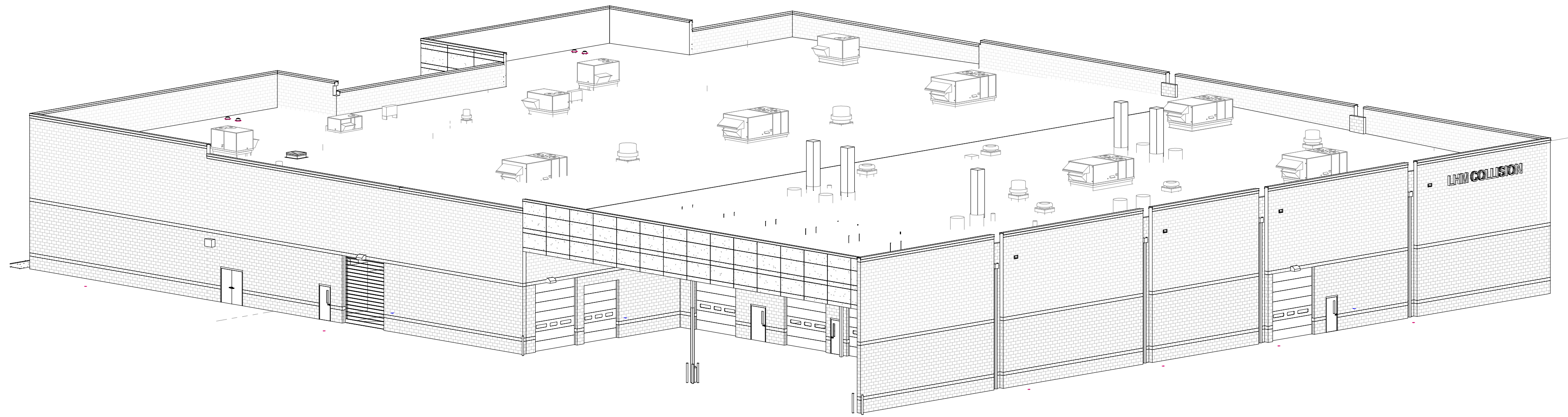
4 West Elevation
1/8" = 1'-0"



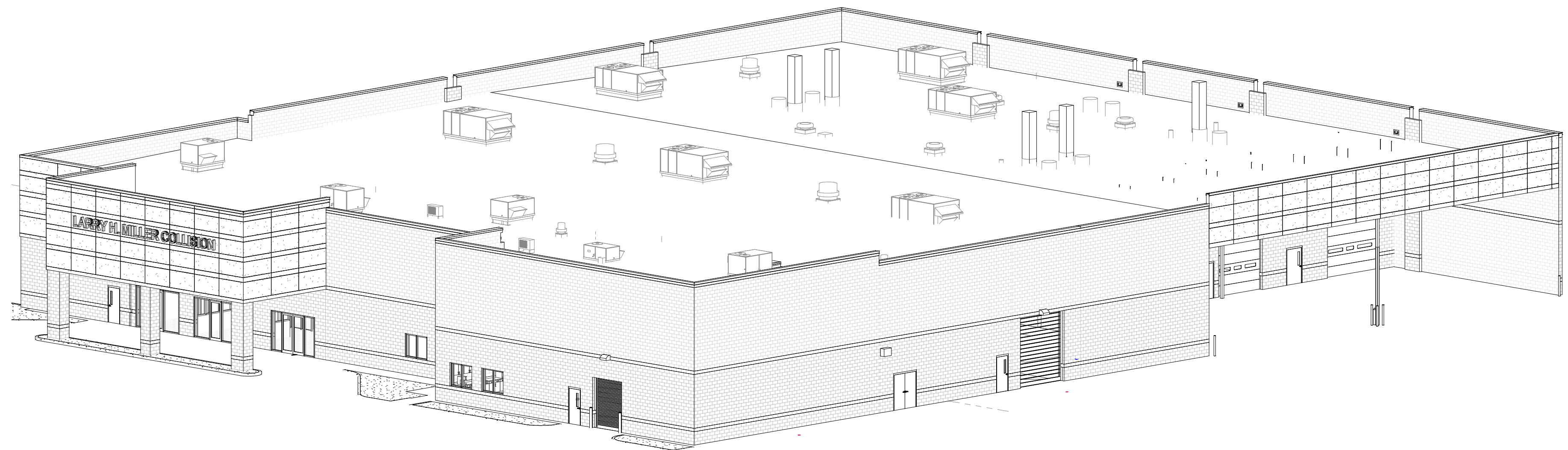
3 South Elevation
1/8" = 1'-0"



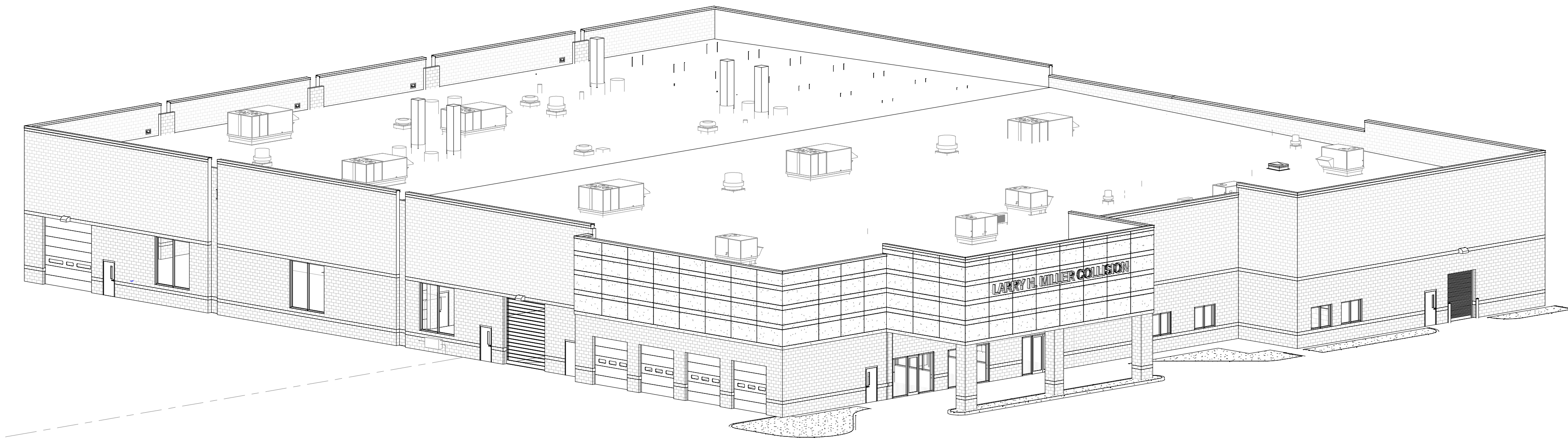
1 Axonometric - Northwest
A410 For Reference Only



2 Axonometric - Northeast
A410 For Reference Only



3 Axonometric - Southeast
A410 For Reference Only



4 Axonometric - Southwest
A410 For Reference Only

NOT
RELEASED FOR
CONSTRUCTION OR
PERMIT

Copyright (c) 2023 Praxis3, LLC
All reports, plans, specifications, computer files, field data, notes and other documents
and instruments prepared by Praxis3 shall retain all copyright law, statutory and other
inherent rights, including copyright therein.
This drawing may not be reproduced in whole or in part without written permission of
Praxis3. It is to be returned upon request. Dates as noted are valid on the original
drawing.

Rev	Date	Comments
	05.15.23	SD Set
	06.08.23	30% Set Update
	06.20.23	60% SET
	08.01.23	90% SET

Client:
**Asbury Automotive
Group**

2905 Premiere Parkway Suite 300
Duluth, GA 30097

Project Number: 22190
Project Name:

**Larry H. Miller
Collision**

460 E Auto Center Drive
Mesa, AZ 85206

Key Plan:

Sheet Title:
**Exterior
Axonometrics**

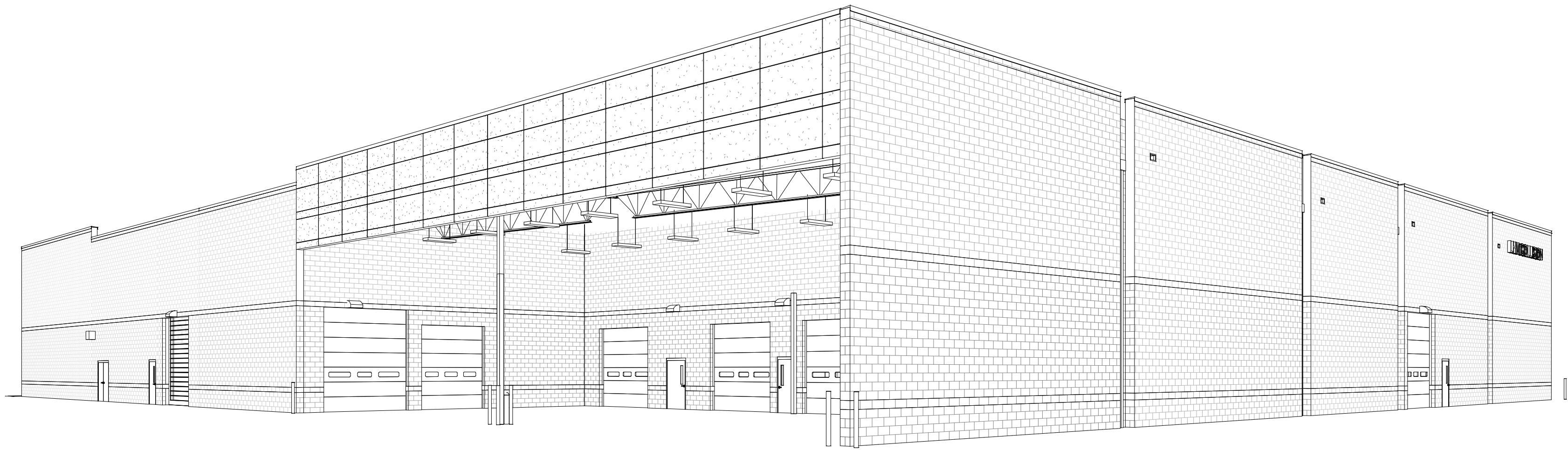
Sheet Number:
A410

NOT
RELEASED FOR
CONSTRUCTION OR
PERMIT

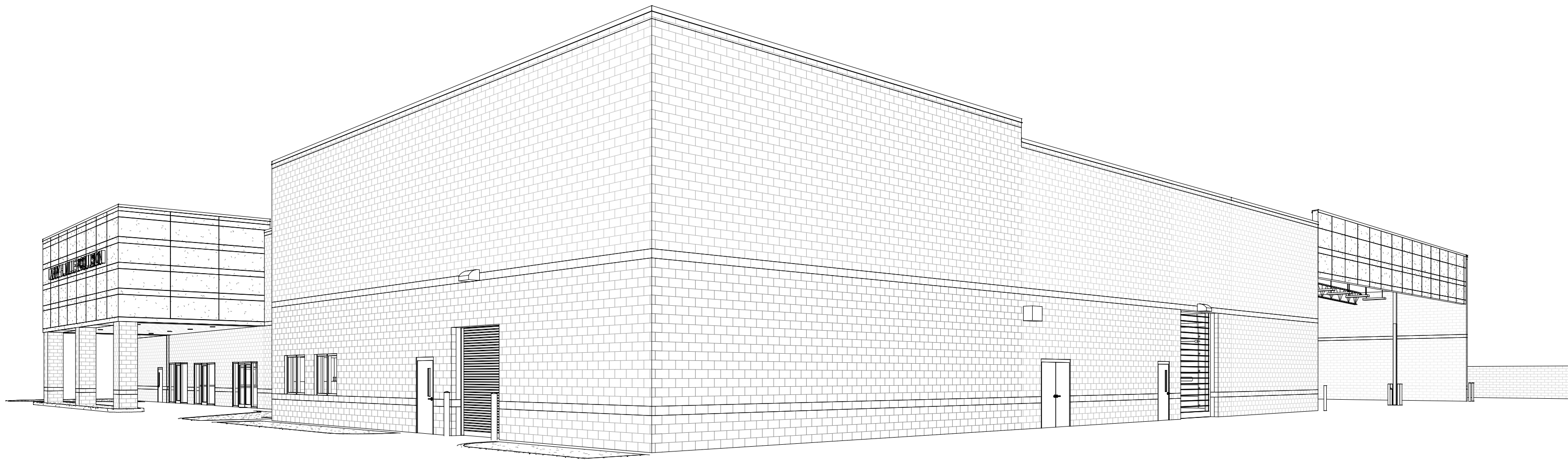
Copyright (c) 2023 Praxis3, LLC
All reports, plans, specifications, computer files, field data, notes and other documents
and instruments prepared by Praxis3 shall retain all copyright law, statutory and other
inherent rights, including copyright, patents.

This drawing may not be reproduced in whole or in part without written permission of
Praxis3. It is to be returned upon request. Scale as noted are valid on the original
drawing.

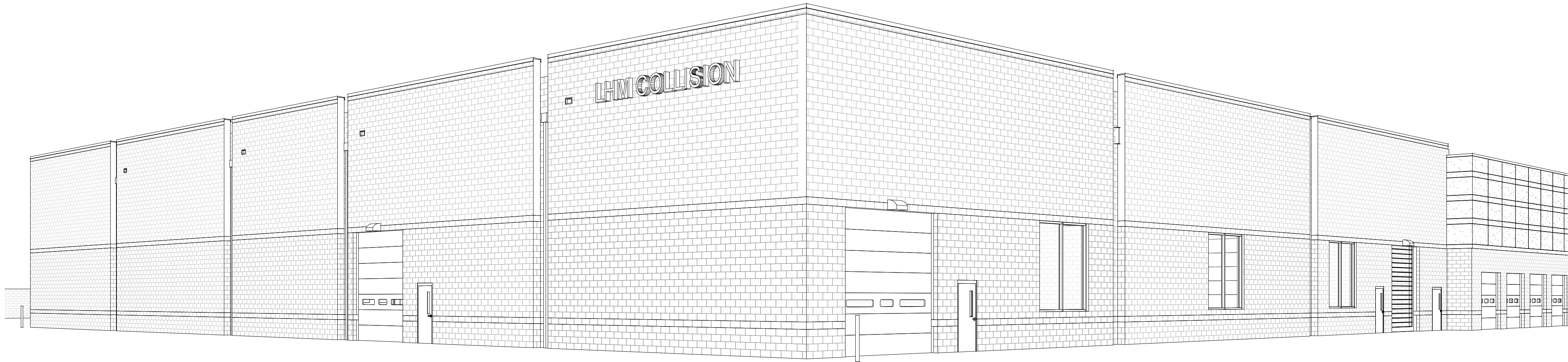
Rev	Date	Comments
	08.01.23	90% SET



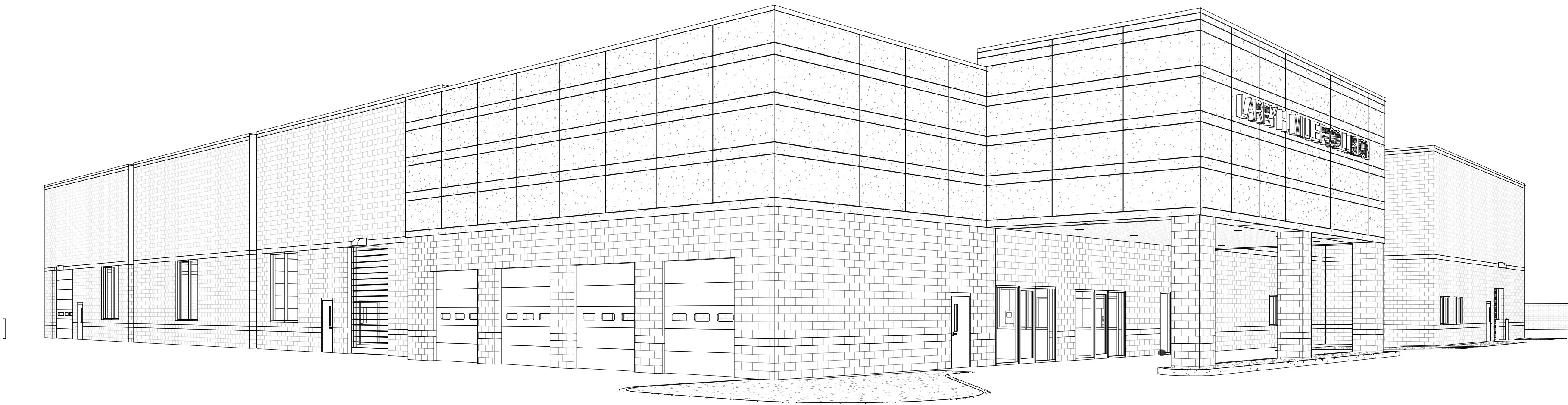
4 Exterior Perspective - NE
A420



3 Exterior Perspective - SE
A420



2 Exterior Perspective - NW
A420



1 Exterior Perspective - SW
A420

Client:

Asbury Automotive
Group

2905 Premiere Parkway Suite 300
Duluth, GA 30097

Project Number: 22190
Project Name:

Larry H. Miller
Collision

460 E Auto Center Drive
Mesa, AZ 85206

Key Plan:

Sheet Title:

Exterior
Perspective
Views

Sheet Number:

A420