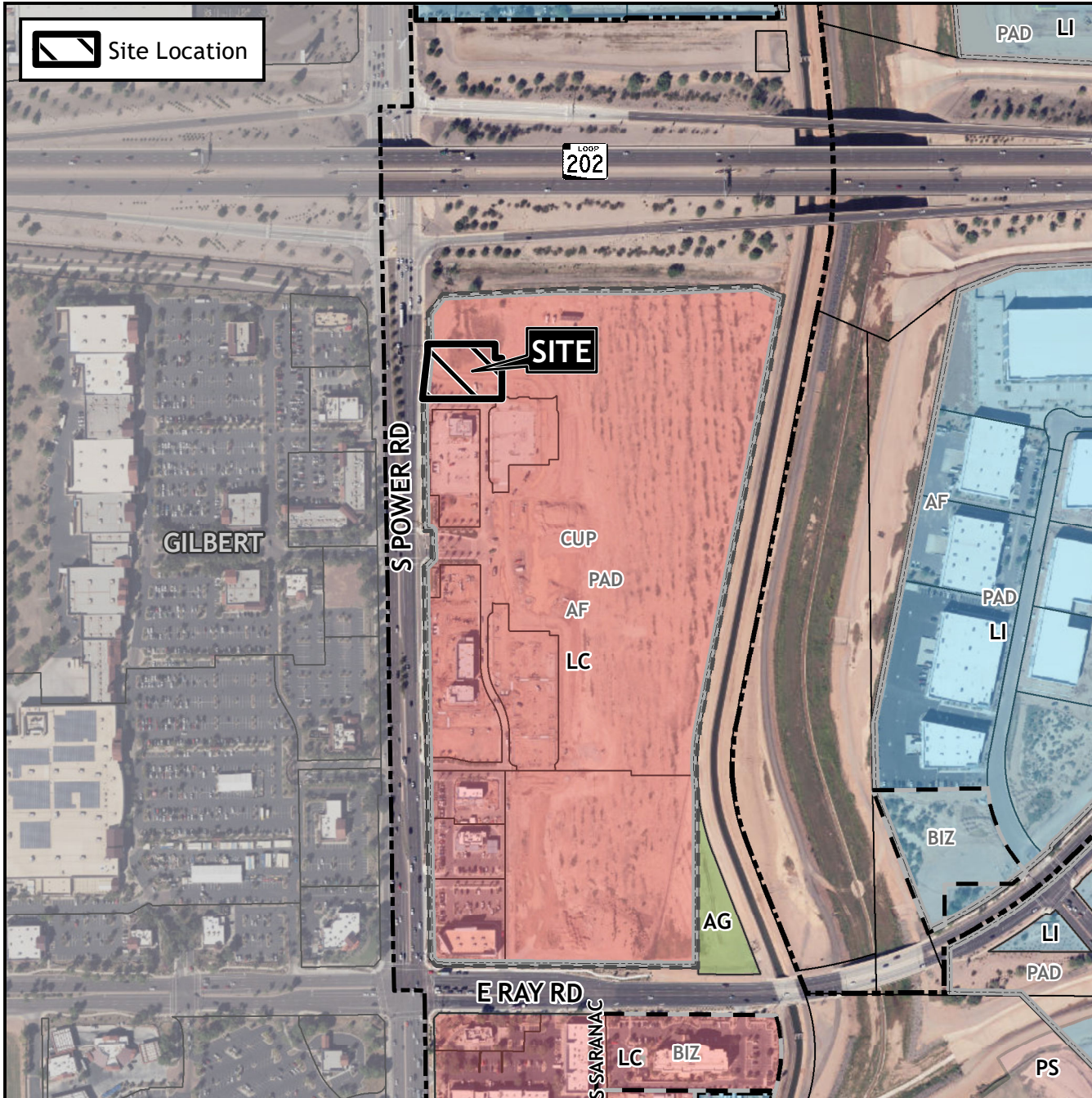


Planning and Zoning Vicinity Map: ZON23-00282

Case Details



CASE:

ZON23-00282

SITE / ADDRESS:

(District 6). Within the 4900 block of South Power Road (east side). Located north of Ray Road on the east side of Power Road. (1± acres).

REQUEST:

Major Site Plan Modification and amending the conditions of approval for Case No. ZON21-00069. This request will allow for a financial institution with a drive-thru.

