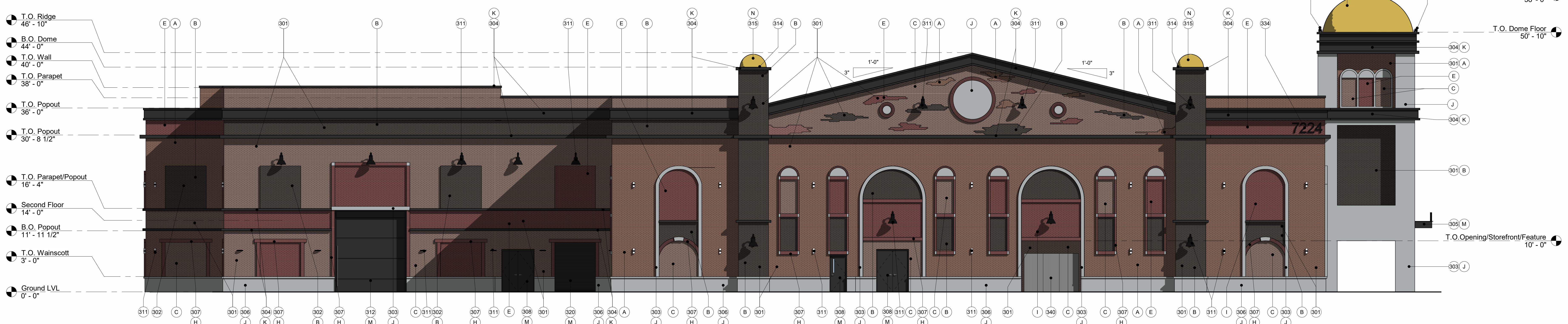




1 North Elevation
1/8" = 1'-0"

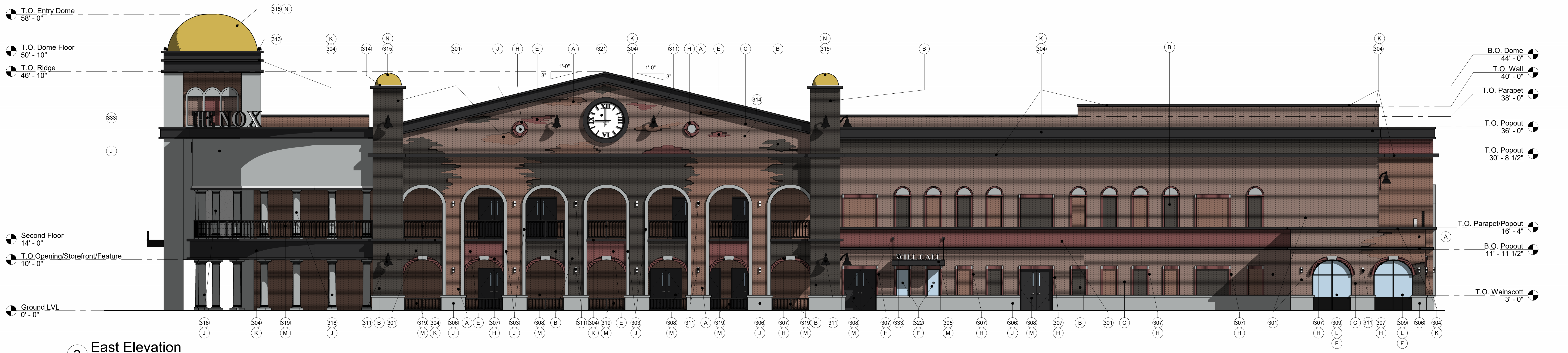
EXTERIOR ELEVATION KEYNOTES	
301	THIN BRICK VENEER
302	STANDARD BRICK VENEER
303	PRECAST COPING OR POPOUT
304	FOAM POPOUT/COPING WITH EIFS FINISH
305	STEEL FRAMED AWNING WITH SOLID PLATE TOP
306	PRECAST WAINSCOTT
307	STANDARD BRICK - SOLIDER COURSE
308	DOOR AND FRAME - SEE SCHEDULE FOR TYPE
309	STOREFRONT SYSTEM AND GLAZING
310	FIRE RISER INLET
311	WALL SCIENCE - BLACK FINISH
312	ELEPHANT DOOR
313	RGBW FLOOD LIGHT FIXTURE AT DOME
314	WHITE TAPE LIGHT FIXTURE AT DOME
315	PRE-FABRICATED FIBERGLASS DOME
316	STANDING SEAM METAL ROOF
317	PROPOSED LED WALL DISPLAY
318	PRECAST CONCRETE COLUMN
319	DECORATIVE WROUGHT IRON RAILING
320	OVERHEAD COILING DOOR
321	BACKLIT CLOCK
322	TRANSACTION WINDOW
333	PROPOSED SIGNAGE LOCATION. REQUIRES SEPARATE SUBMITTAL AND APPROVAL.
334	PROPOSED BUILDING NUMBER/ADDRESS IDENTIFICATION SIGNAGE. MUST BE A CONTRASTING COLOR AND FOLLOW CITY GUIDELINES. REQUIRES SEPARATE SUBMITTAL AND APPROVAL.
340	ELECTRICAL SERVICE ENTRANCE SECTION

GENERAL NOTE:
SIGN LOCATIONS AND DESIGN TO BE DETERMINED UNDER SEPARATE SUBMITTAL/APPROVAL AND PROVIDED FOR ILLUSTRATIVE PURPOSES ONLY

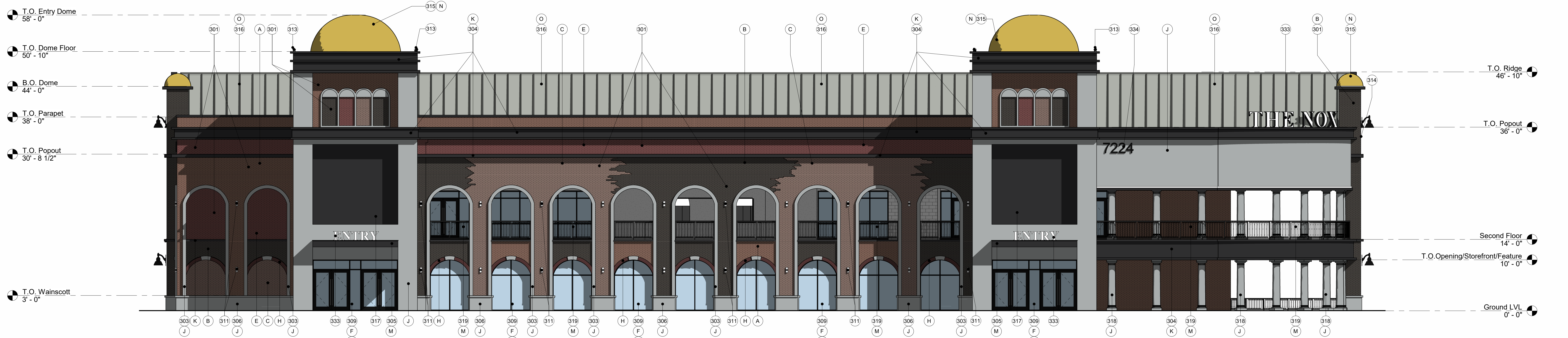


2 West Elevation
1/8" = 1'-0"

EXTERIOR MATERIAL LEGEND:	
	A - THIN BRICK VENEER: 2 1/2" X 8" X 5/8" STANDARD THIN BASE BRICK MANUF: McNEAR COLOR: TIVOLI - SANDMOLD SERIES
	B - THIN BRICK VENEER: 2 1/2" X 8" X 5/8" STANDARD THIN BASE BRICK MANUF: McNEAR COLOR: CUMBERLAND - SANDMOLD SERIES
	C - THIN BRICK VENEER: 2 1/2" X 8" X 5/8" STANDARD THIN BASE BRICK MANUF: McNEAR COLOR: EMBARCADERO - SANDMOLD SERIES
	E - THIN BRICK VENEER: 2 1/2" X 8" X 5/8" STANDARD THIN ACCENT BRICK MANUF: McNEAR COLOR: OLD MYFORD - OLD CALIFORNIA SERIES
	F - STOREFRONT FRAMES: ALL EXTERIOR STOREFRONTS MANUF: ARCADIA COLOR: BLACK (A8-8)
	H - BRICK VENEER SOLIDER COURSE: 2 1/2" X 8" X 4" STANDARD ACCENT BRICK MANUF: McNEAR COLOR: OLD MYFORD - OLD CALIFORNIA SERIES
	J - PRECAST CONCRETE: FOR THICKNESS - SEE DETAIL POPOUT/WALL FACE/WAINSCOTT MANUF: N/A COLOR: NATURAL WITH A STONE GREY PIGMENT
	K - EIFS: FOR THICKNESS - SEE DETAIL ALL FOAM POPOUTS MANUF: SHERWIN WILLIAMS COLOR: TRICORN BLACK (SW6258)
	M - DOOR FRAMES AND PANELS/AWNINGS: ALL EXTERIOR NON-STOREFRONT DOORS/AWNINGS/RAILINGS MANUF: SHERWIN WILLIAMS COLOR: TRICORN BLACK (SW6258)
	N - DOMES: ALL PRE-FABRICATED DOMES MANUF: DUNN EDWARD COLOR: GOLD GLEAM (DE5452)
	O - STANDING SEAM ROOF: STANDING SEAM METAL ROOF AT GABLE MANUF: ATAS PROFILE: 1 1/2" FIELD-LOK - 16 1/2" SPACING COLOR: SLATE GREY
	L - GLAZING: ALL EXTERIOR STOREFRONTS 1" TOTAL INSULATED SYSTEM MANUF: VITRO COMP: SOLARBAN 72 (#2 SURFACE) STARPHIRE CLEAR INBOARD LITE



3 East Elevation
1/8" = 1'-0"



4 South Elevation
1/8" = 1'-0"

adaptive
ARCHITECTS

3008
100 E University Drive
Mesa AZ 85201
480.650.0033
www.adaptivearchitects.com

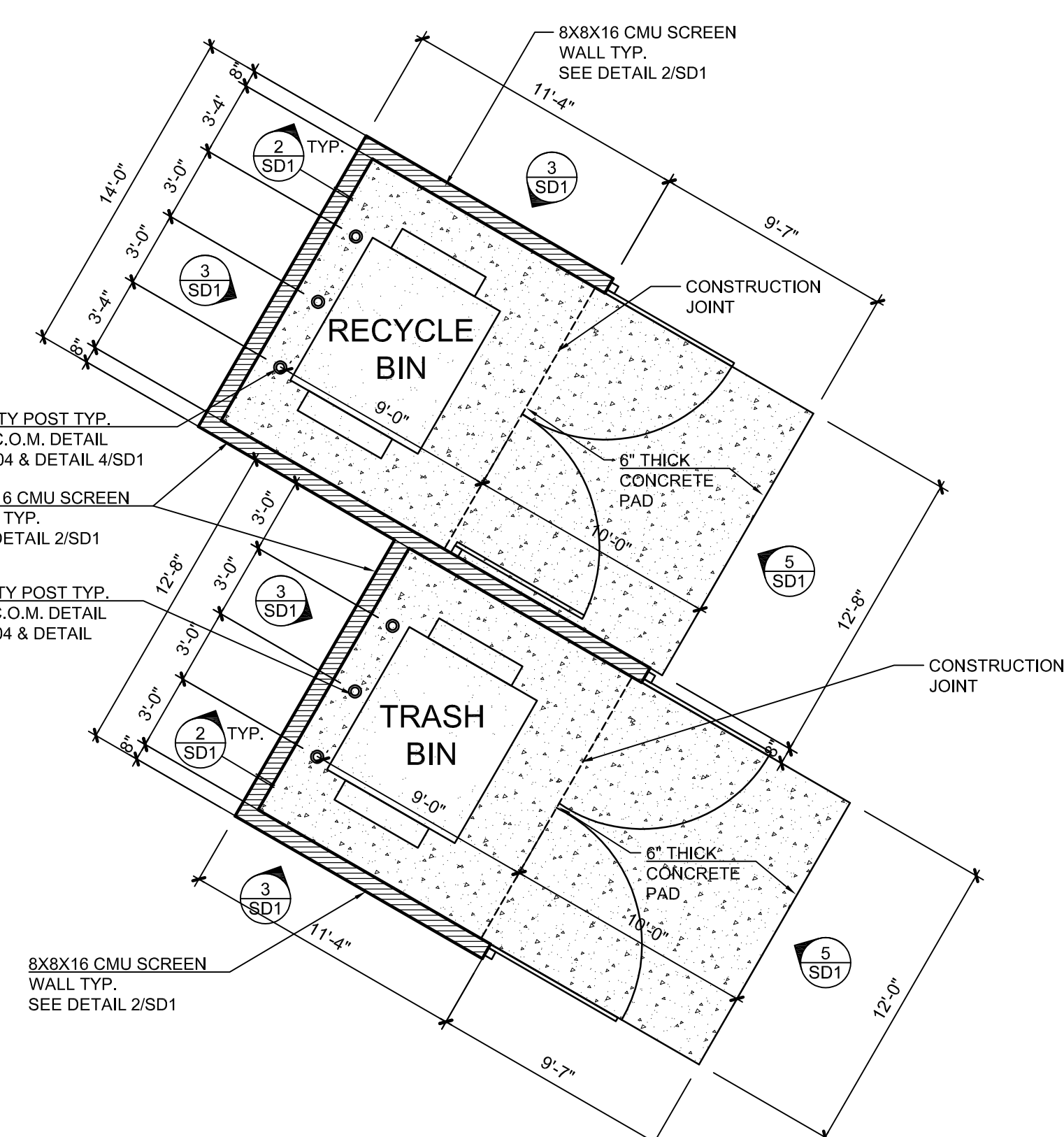
Project: Schematic Design

THE NOX
Live Music Venue and Studios
7224 E. Seaver Ave
Mesa, AZ 85212

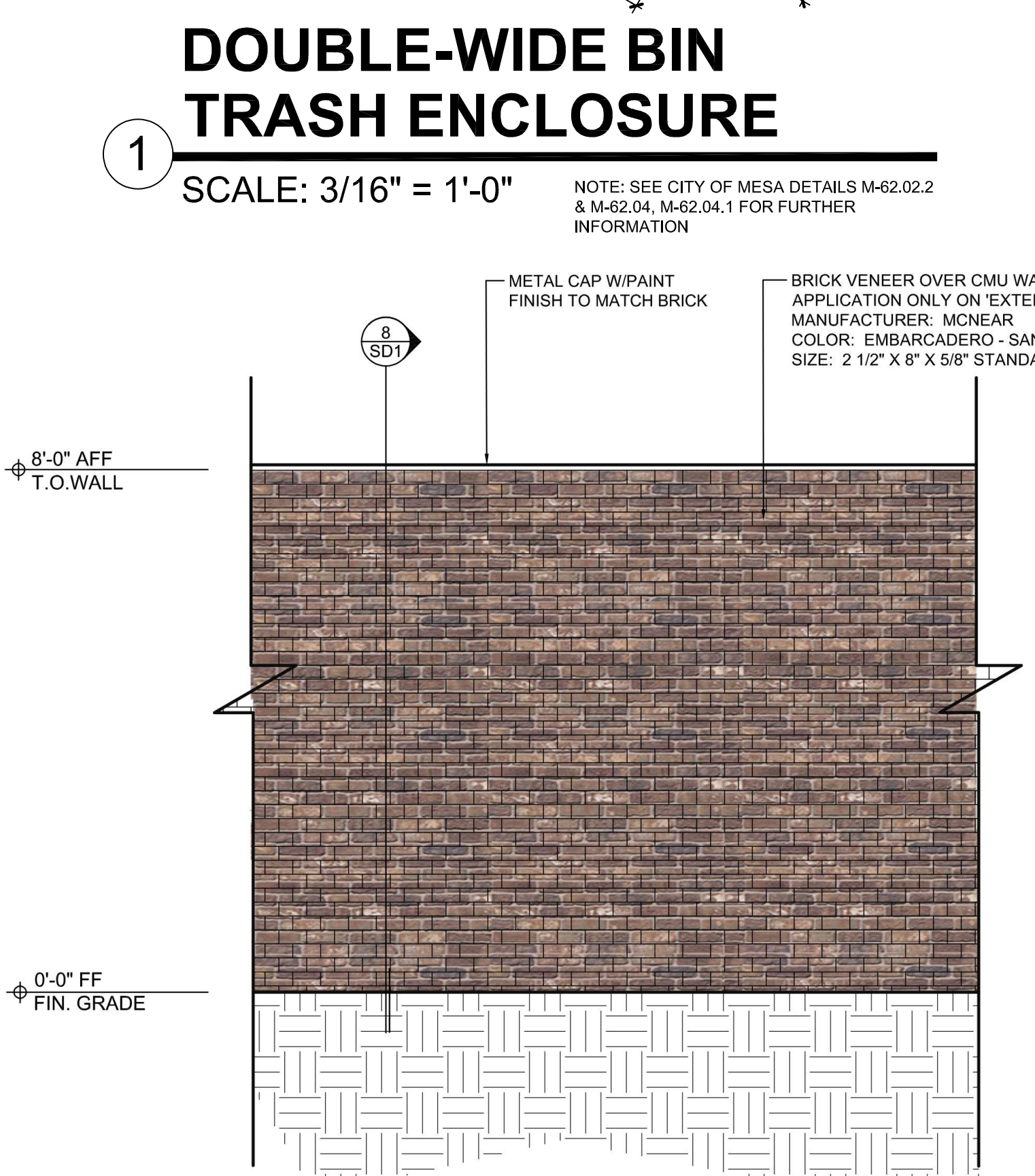
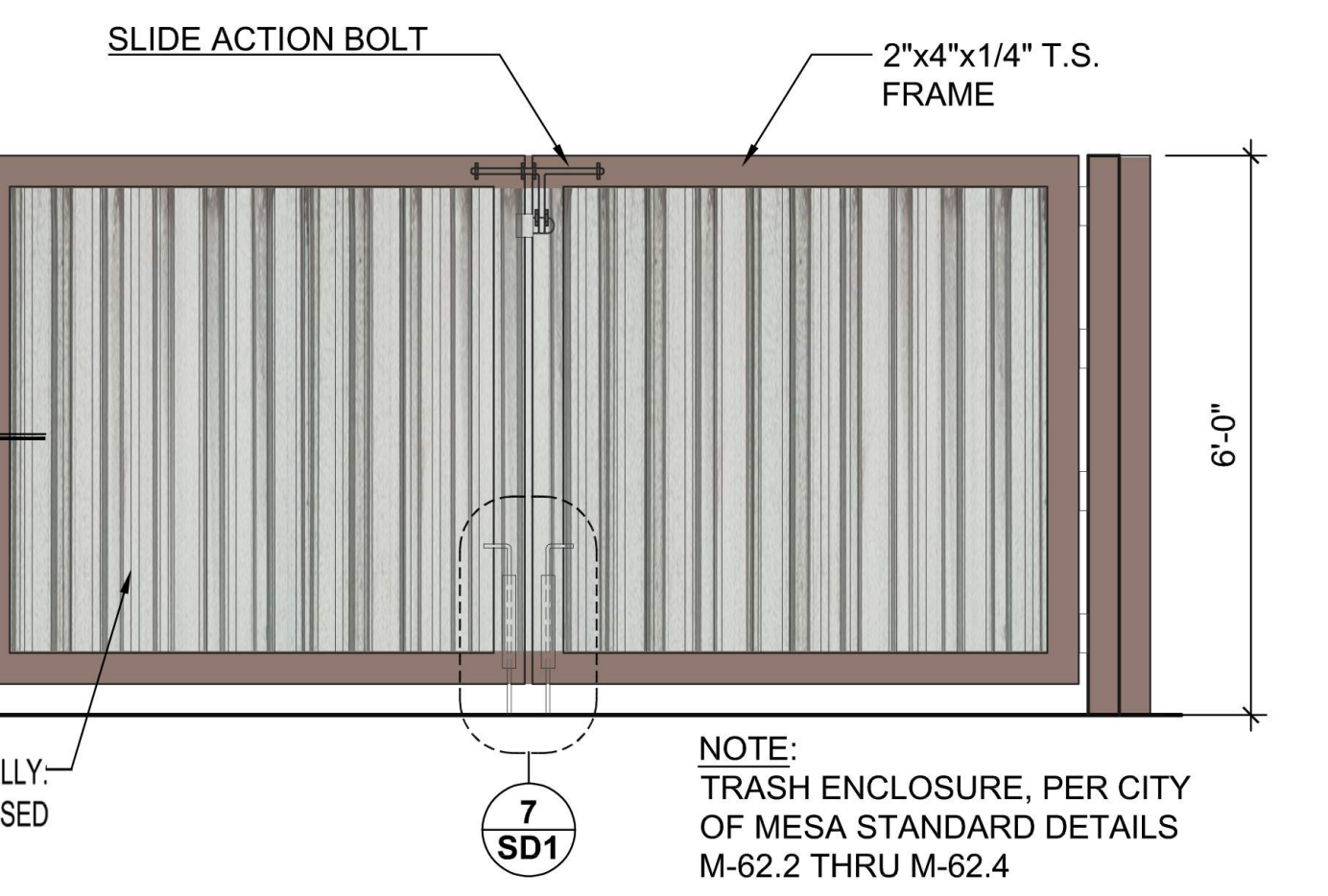
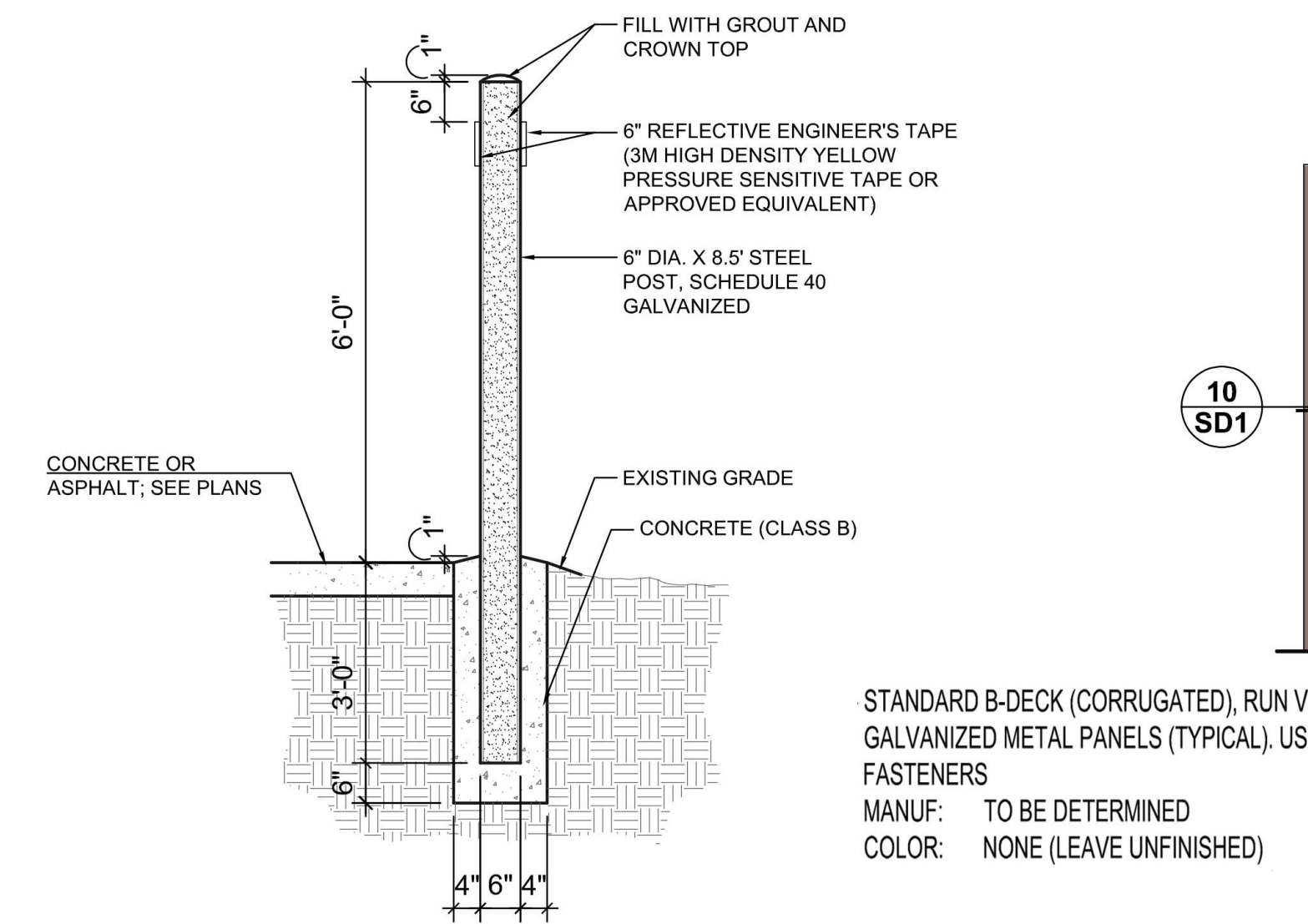
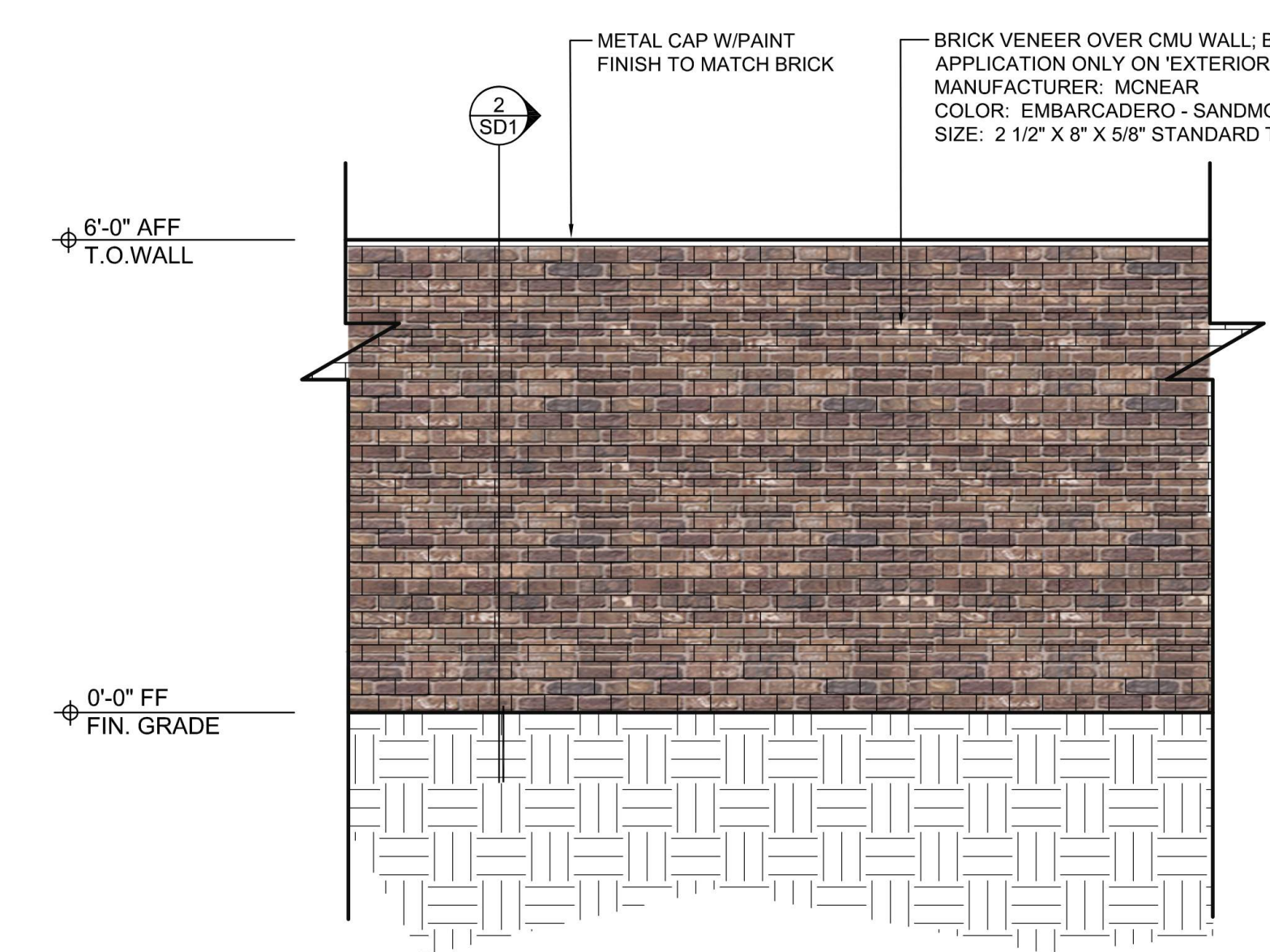
Exterior Elevations

Project Number: 2201	Revisions: Number Description Date	Sheet Number: A3.0
Date: 10/21/2024		

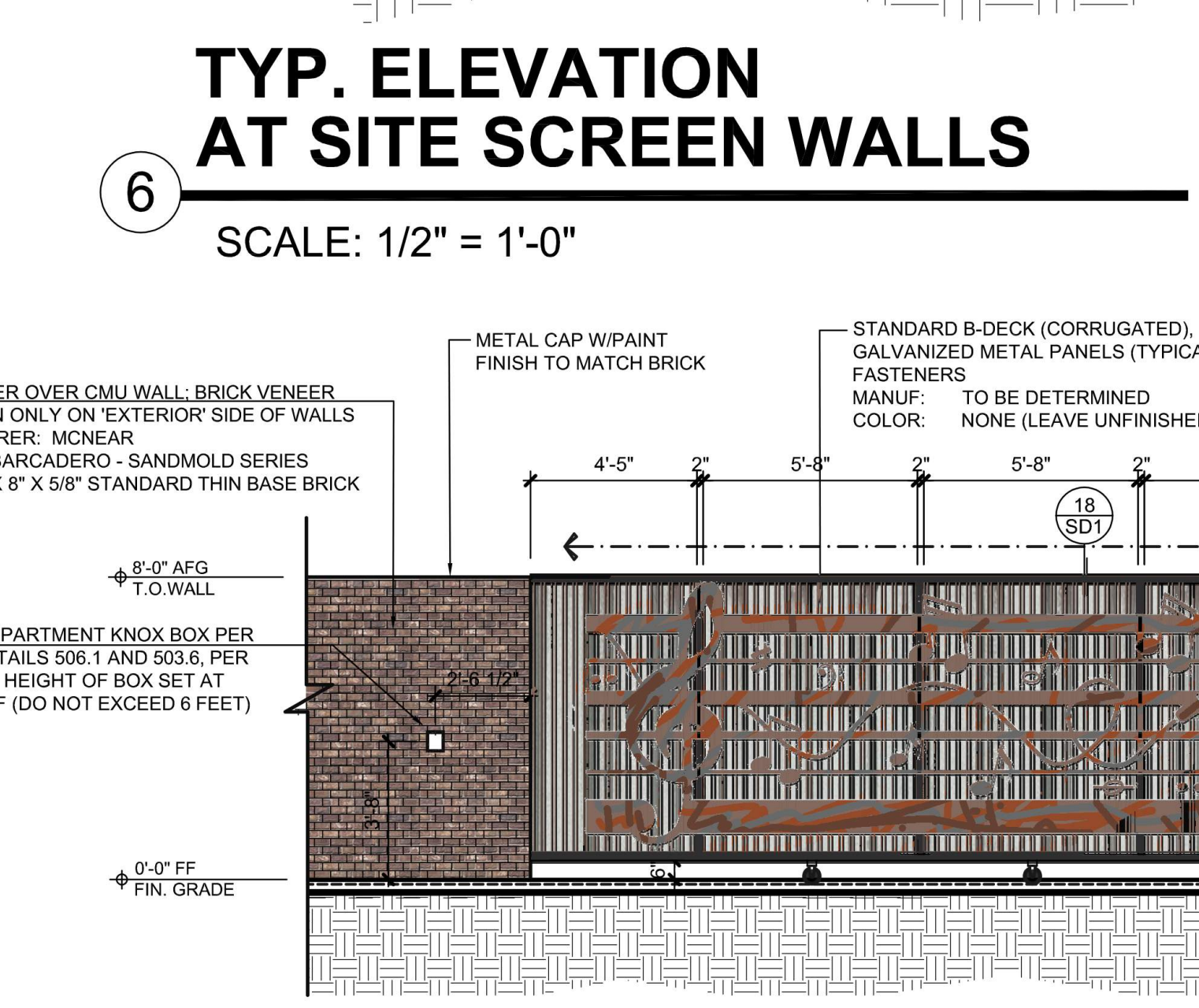
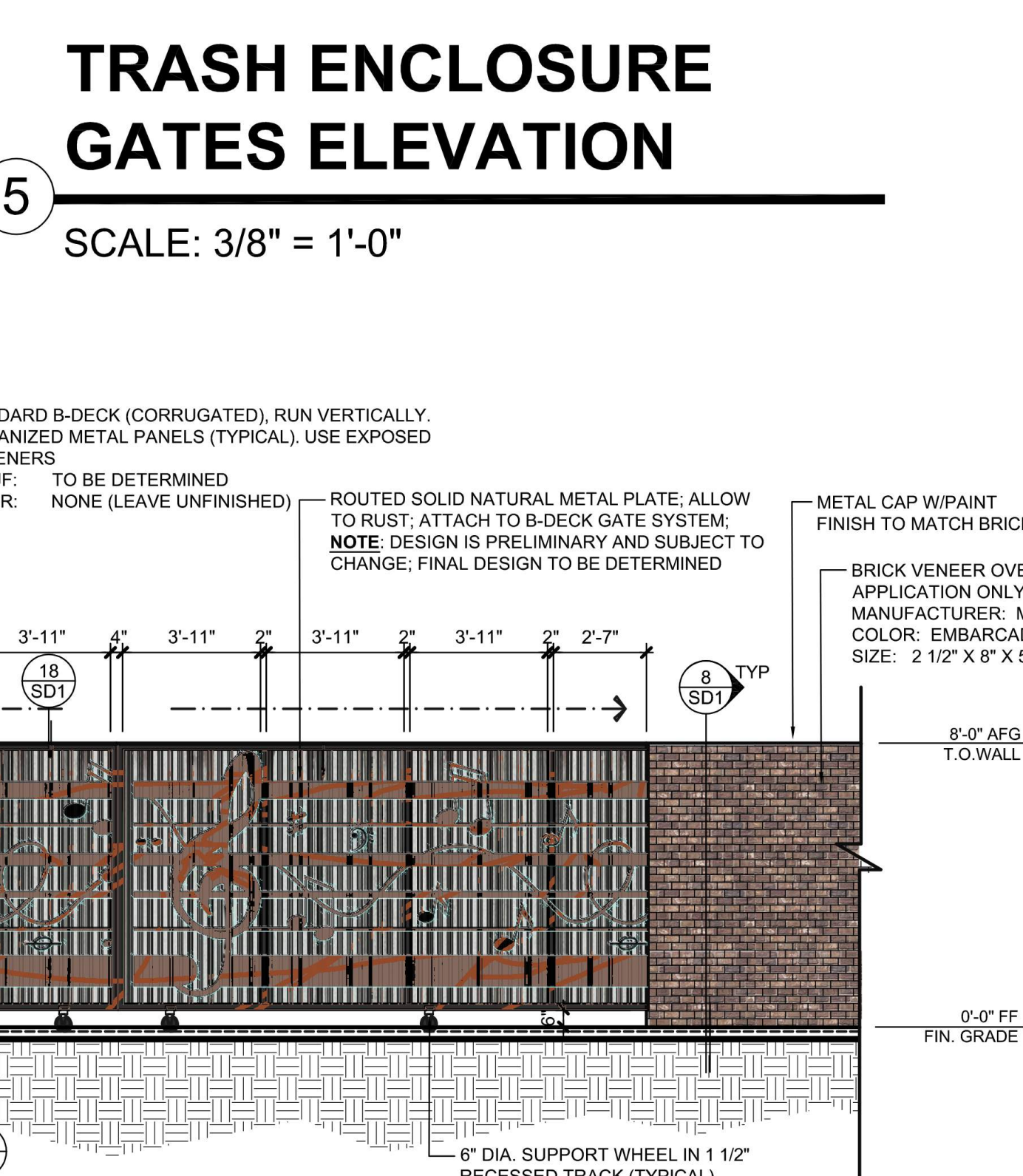
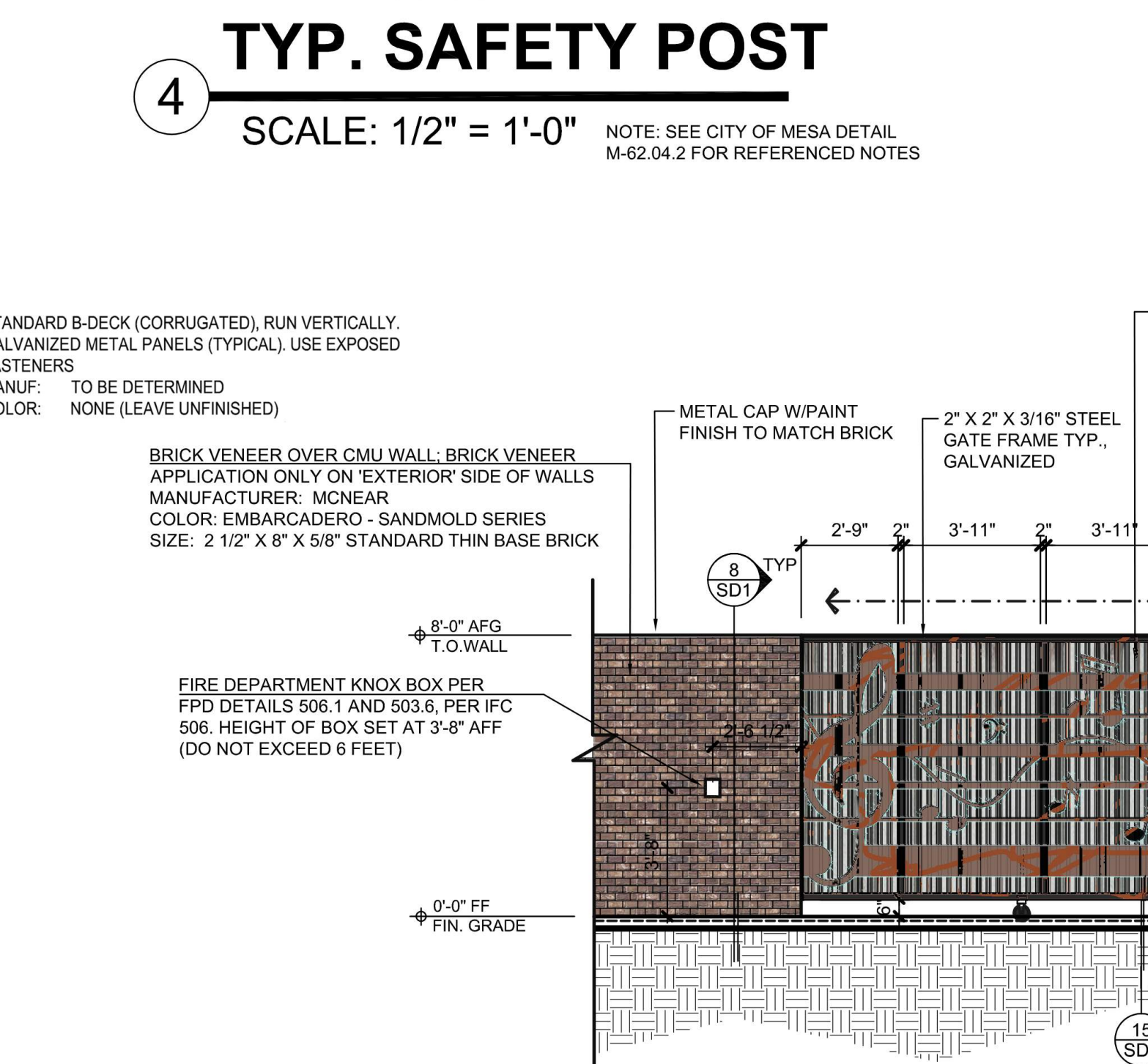
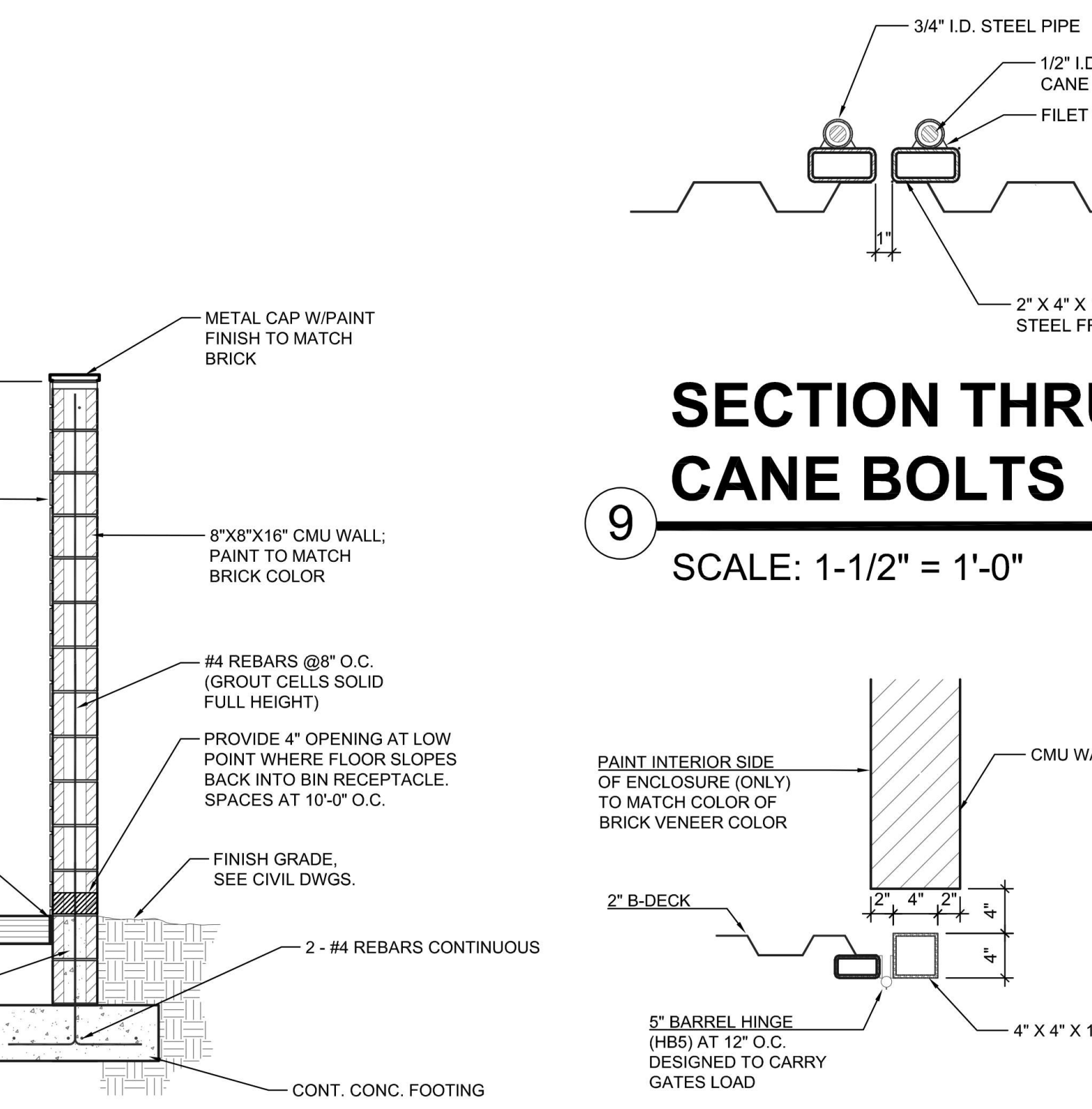
SIGN LOCATIONS AND DESIGN TO BE DETERMINED UNDER SEPARATE SUBMITTAL/APPROVAL AND PROVIDED FOR ILLUSTRATIVE PURPOSES ONLY



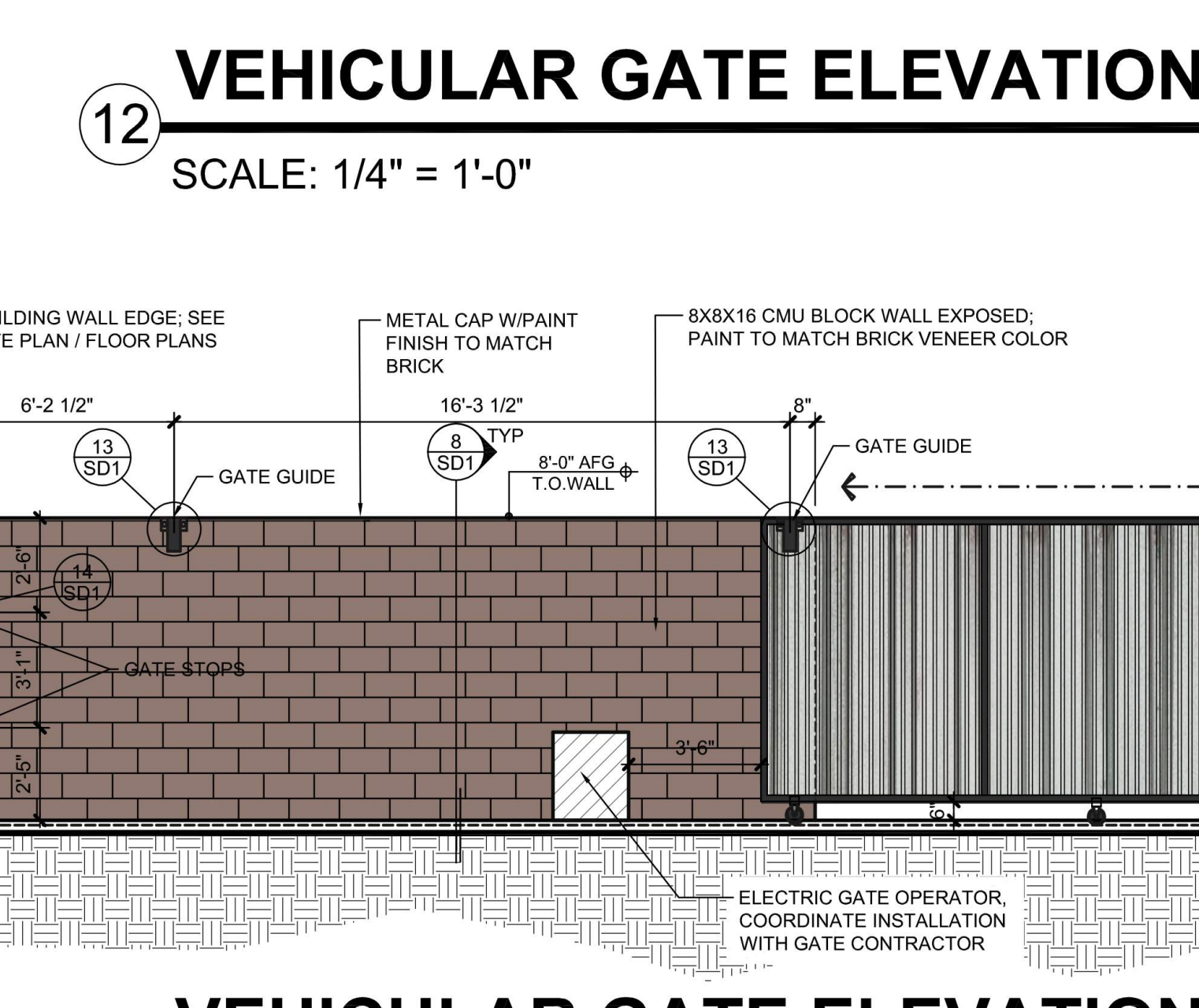
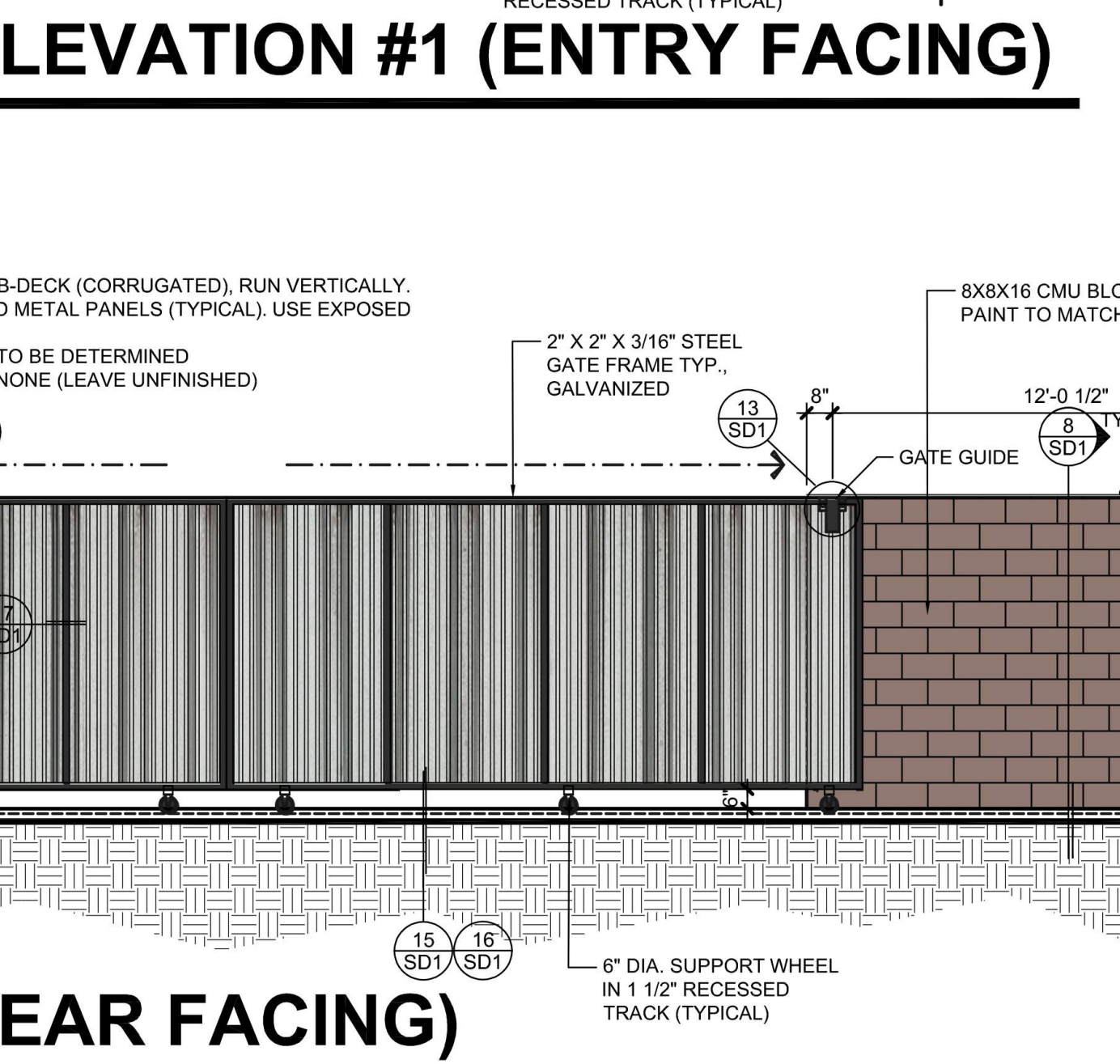
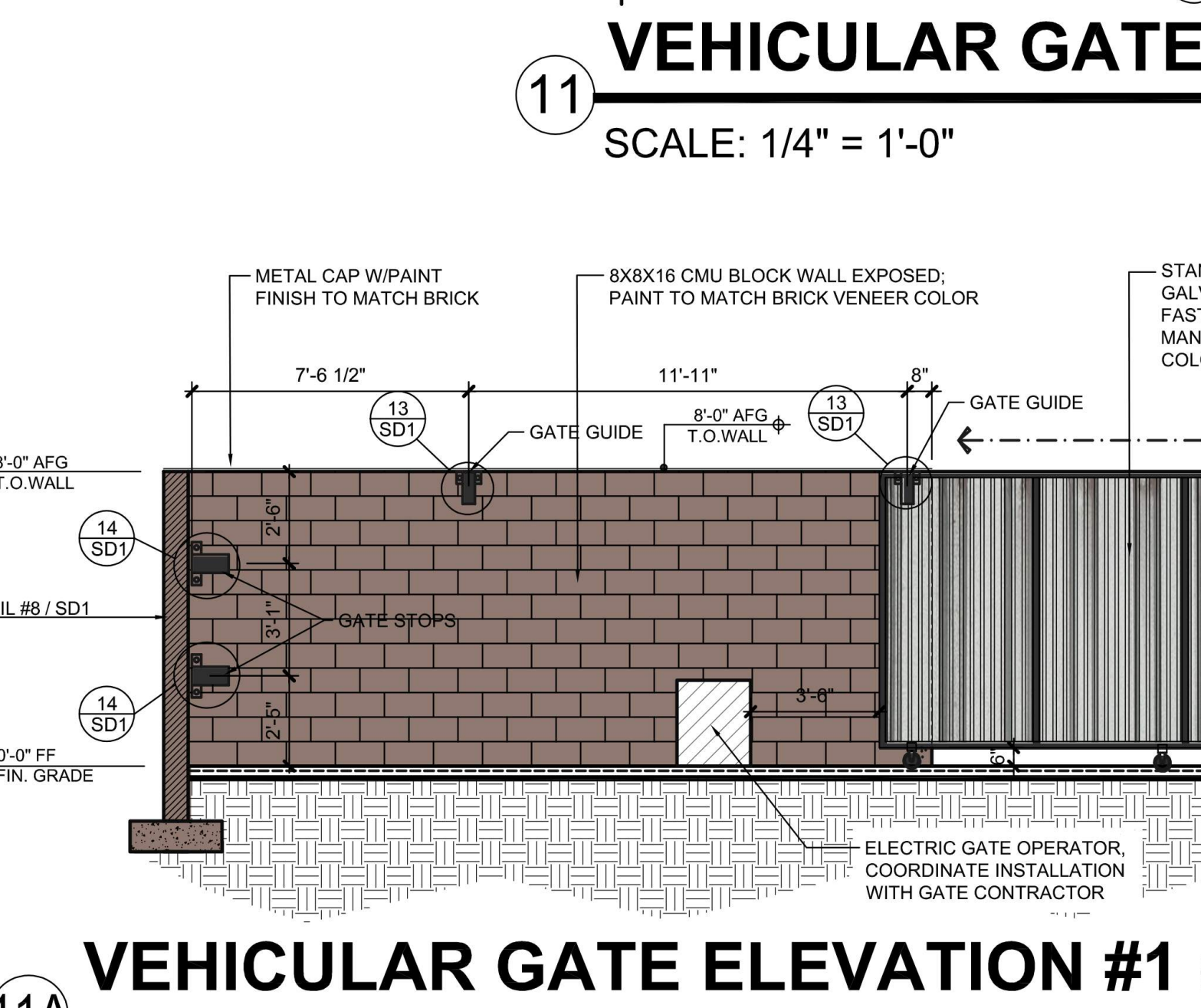
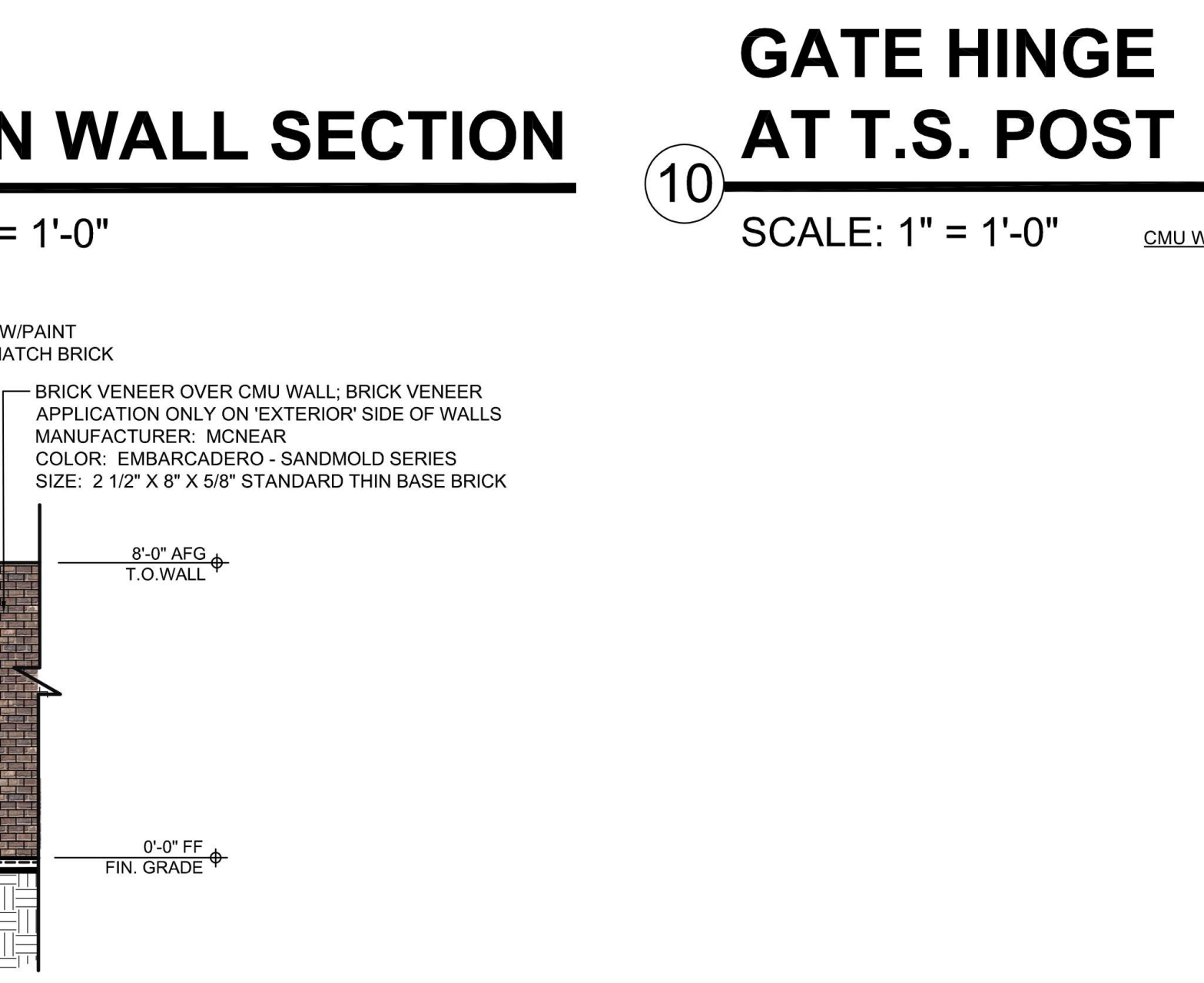
MASONRY WALL AT TRASH ENCLOSURE
SCALE: 1/2" = 1'-0"



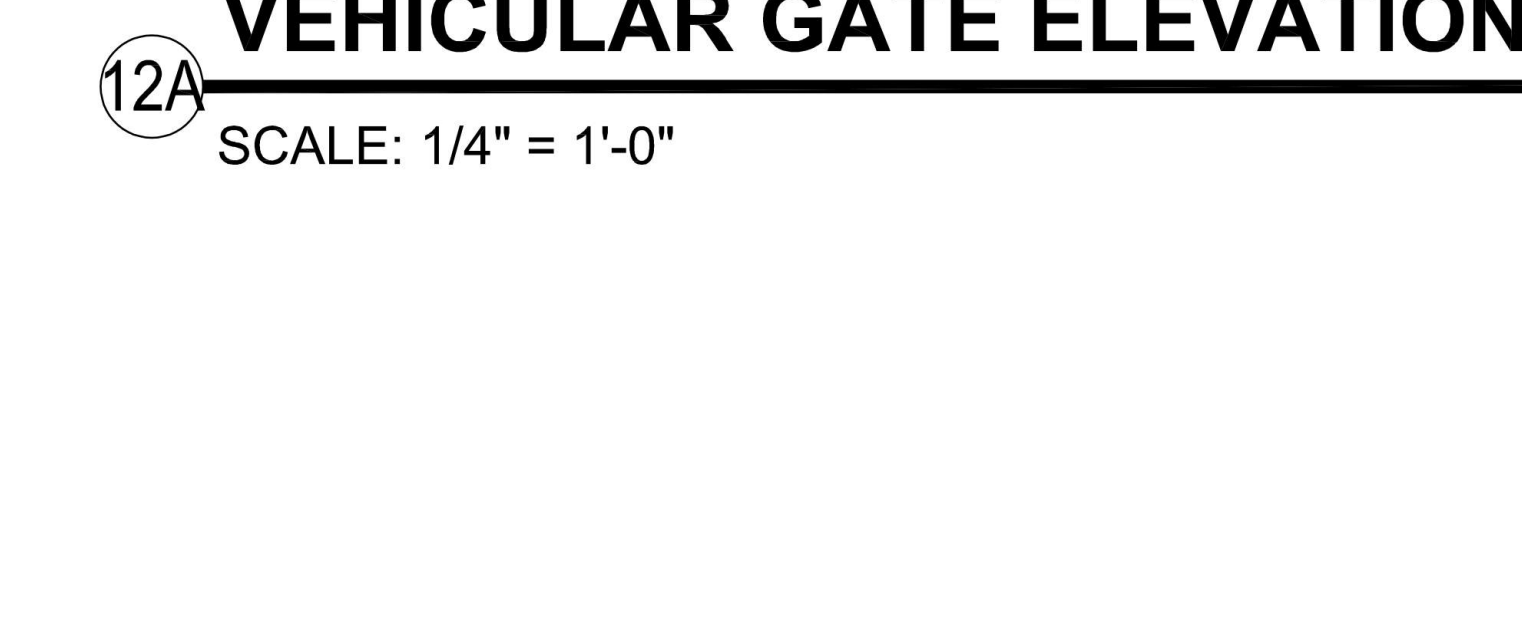
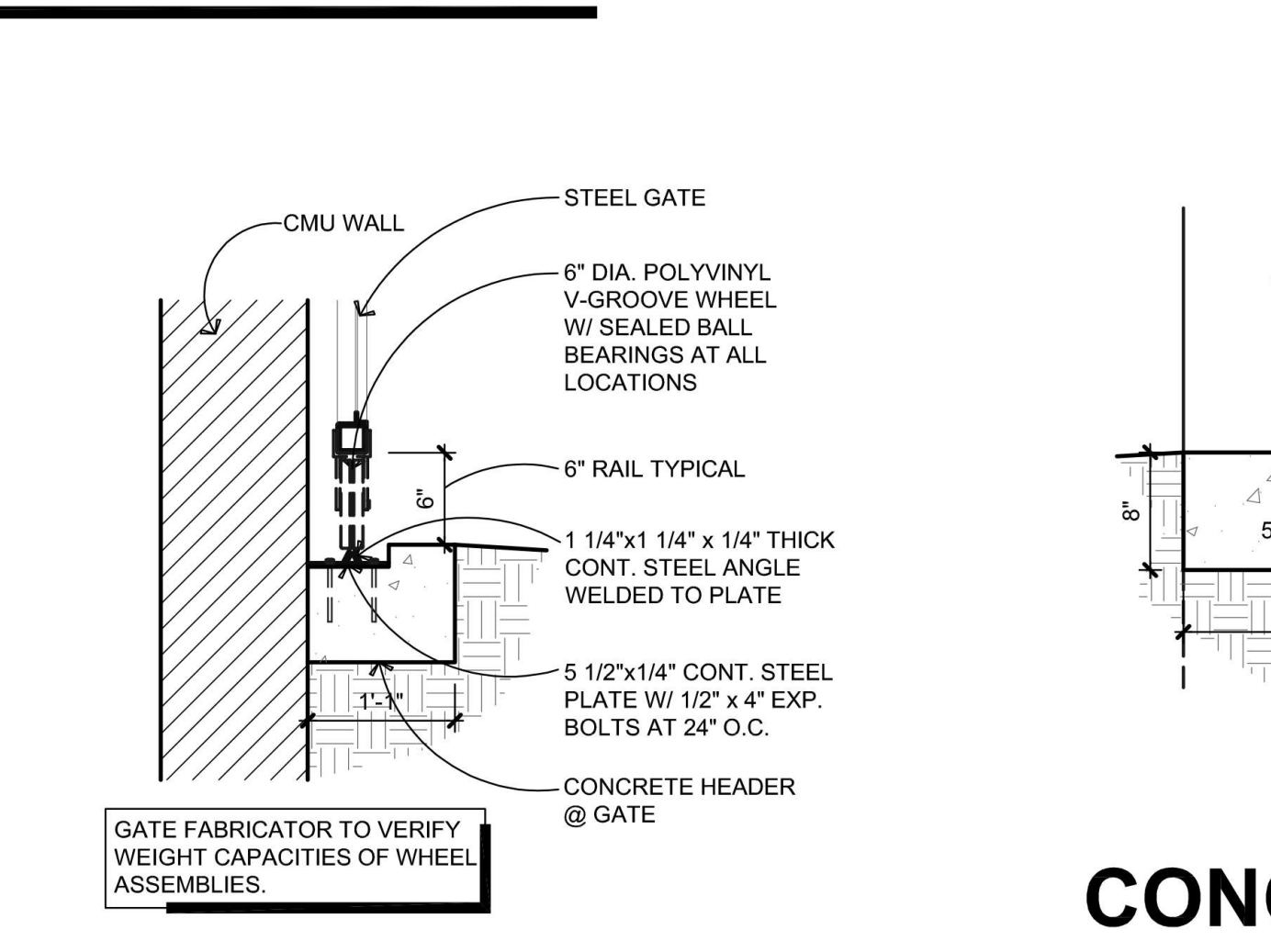
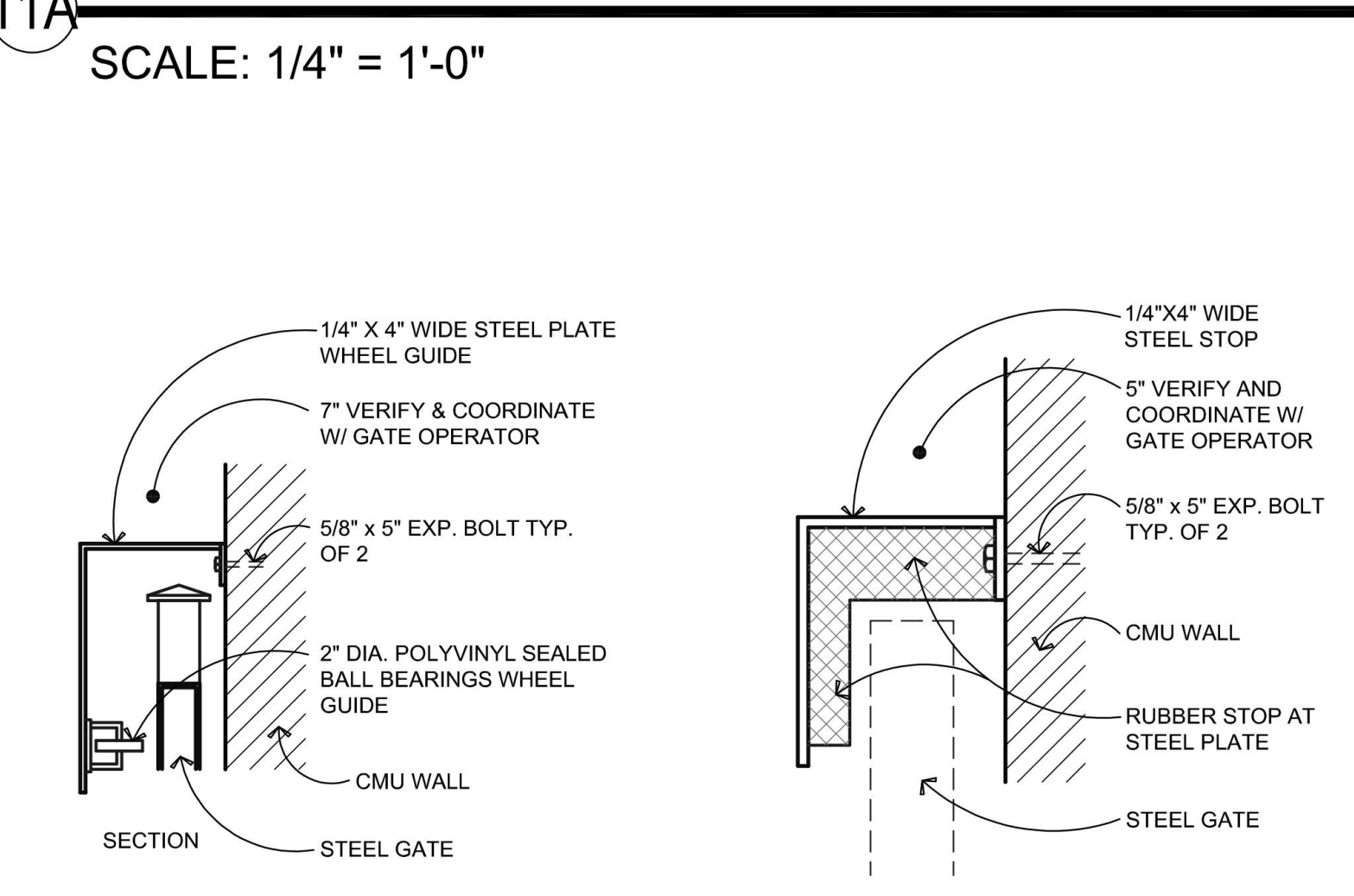
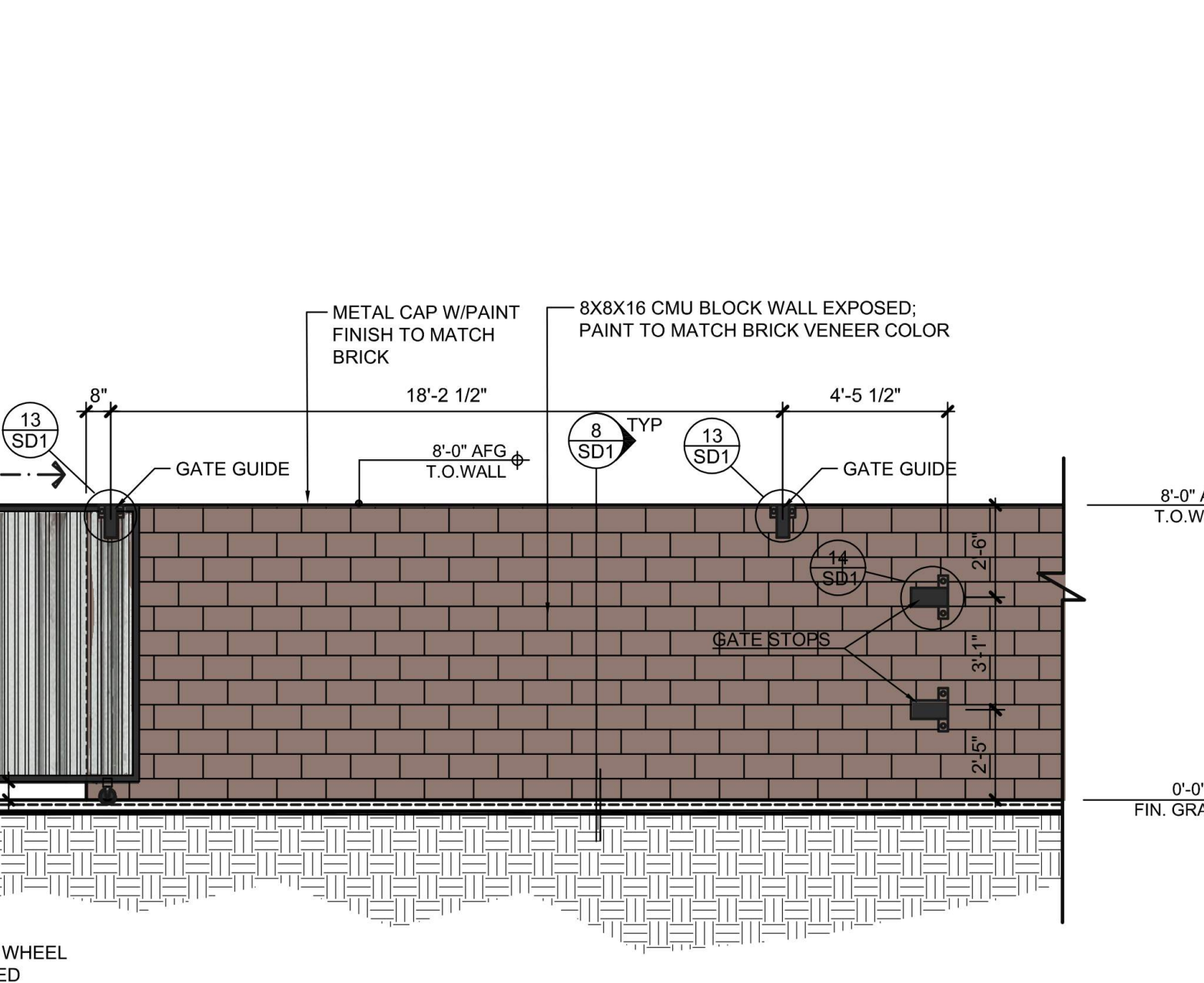
CANE BOLT DETAIL
SCALE: 1" = 1'-0"



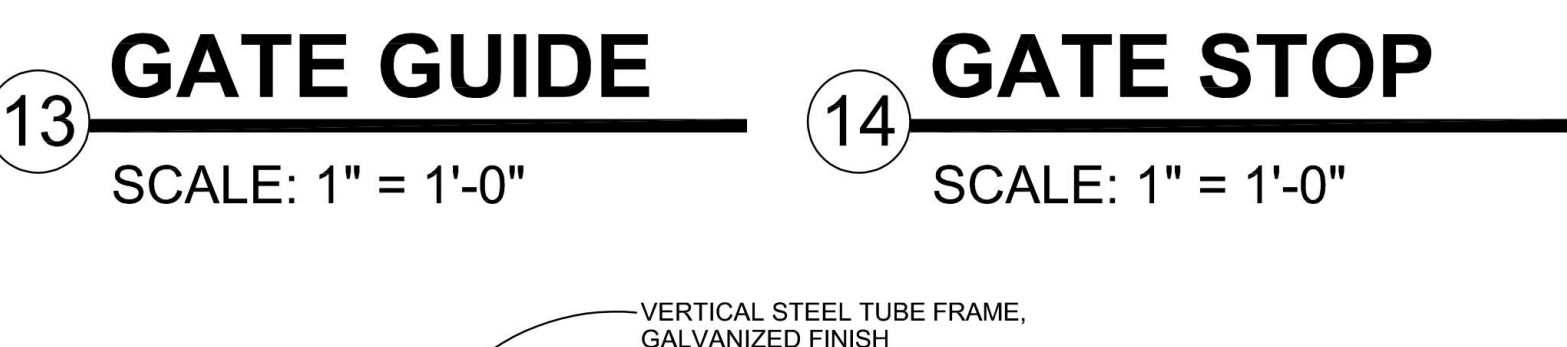
SCREEN WALL SECTION
SCALE: 1/2" = 1'-0"



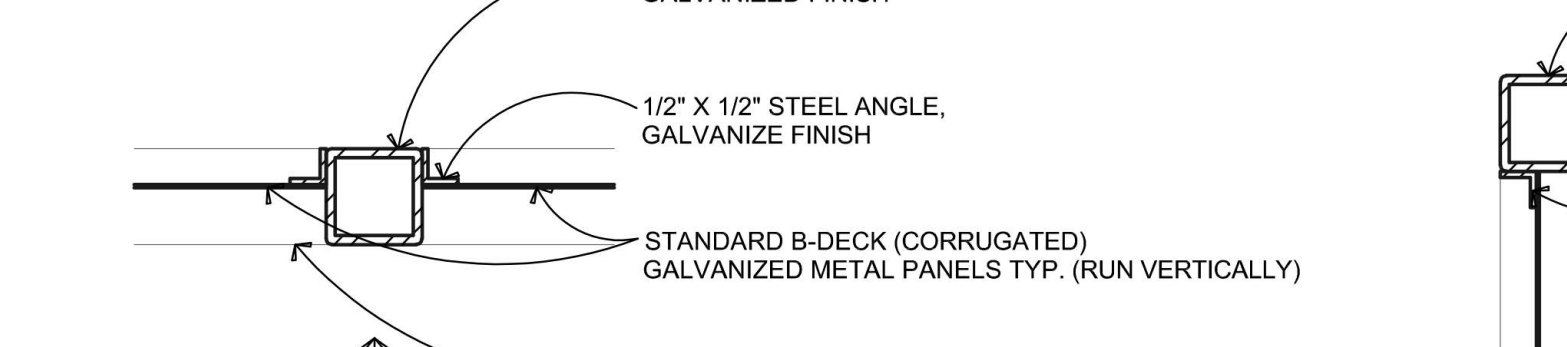
GATE HINGE AT T.S. POST
SCALE: 1" = 1'-0"



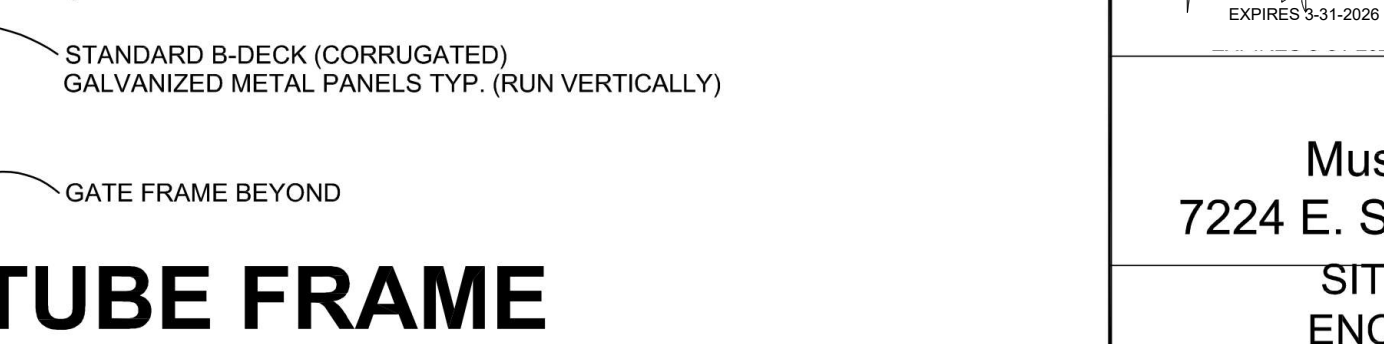
GATE GUIDE
SCALE: 1" = 1'-0"



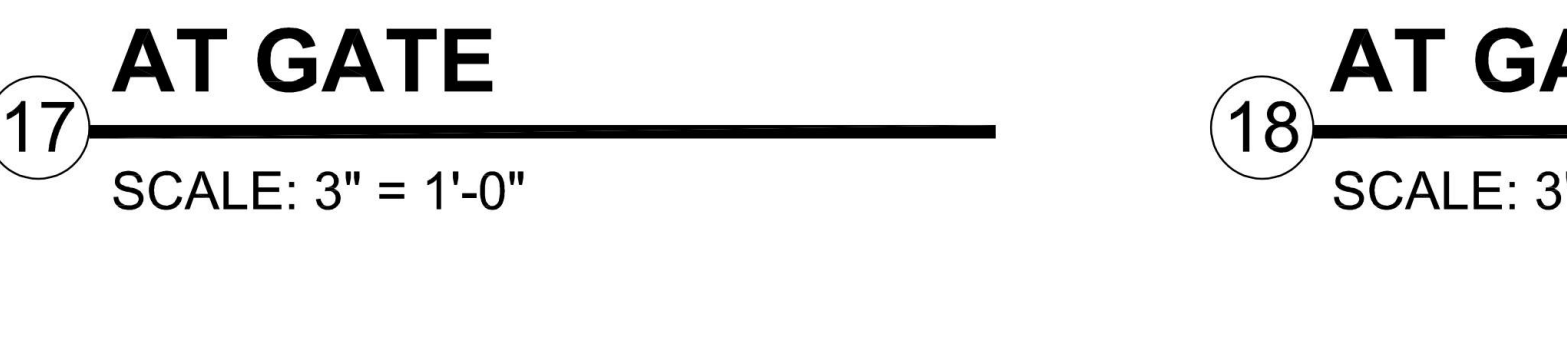
GATE STOP
SCALE: 1" = 1'-0"



GATE WHEEL GUIDE
SCALE: 1" = 1'-0"



STEEL TUBE FRAME AT GATE
SCALE: 3" = 1'-0"



STEEL TUBE FRAME AT GATE
SCALE: 3" = 1'-0"



CONCRETE HEADER AT GATE
SCALE: 1" = 1'-0"



adaptive ARCHITECTS
1076 University Drive
Suite 212
Mesa, AZ 85201
480-951-0513
www.adaptivearchitects.com

Phase: Design Review

THE NOX
Music Performance Venue
7224 E. Seaver Ave, Mesa, AZ 85212
SITE WALL ELEVATIONS, TRASH ENCLOSURES, AND GATES

Project Number: 2201
Date: 10/21/2024

Revision Date: _____
Sheet Number: **SD1**