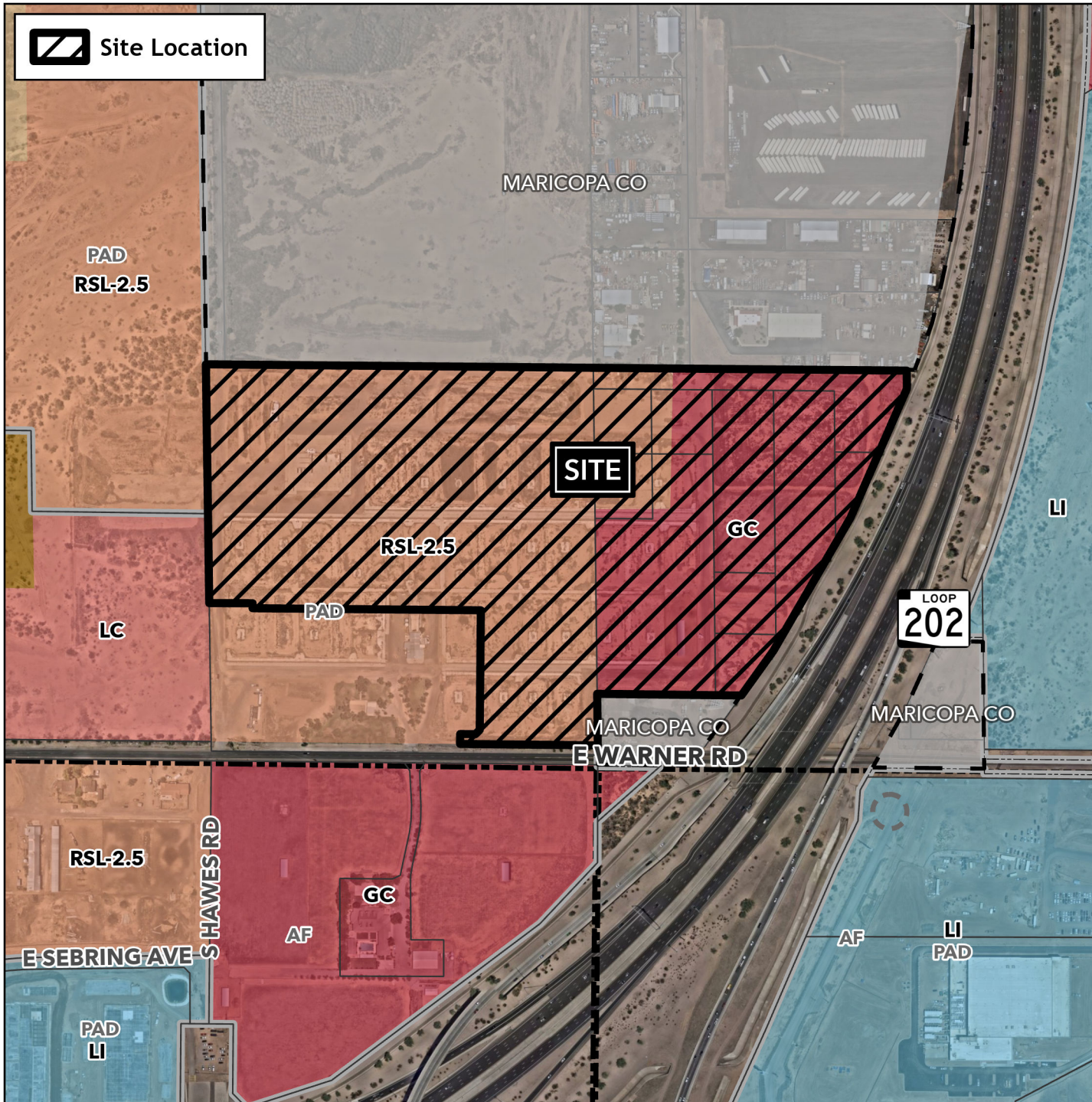


# Planning and Zoning Vicinity Map: GPA25-00462

## Case Details

 Site Location



### Case:

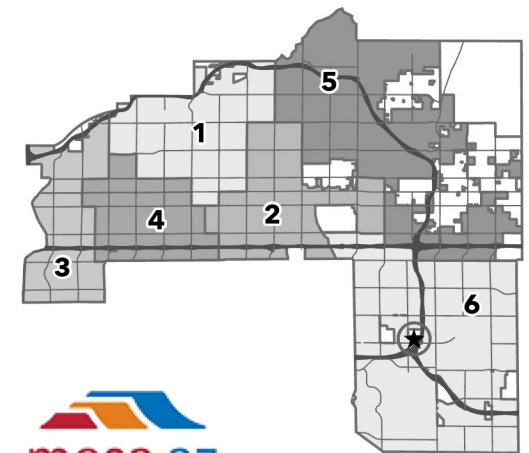
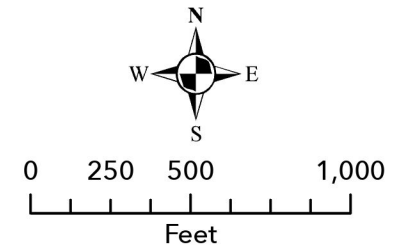
GPA25-00462

### Site / Address:

(District 6). 50± acres located at the northeast corner of East Warner Road and South Hawes Road.

### Request:

Major General Plan Amendment to change the Placetype from Urban Center to Urban Residential.



  
mesa·az