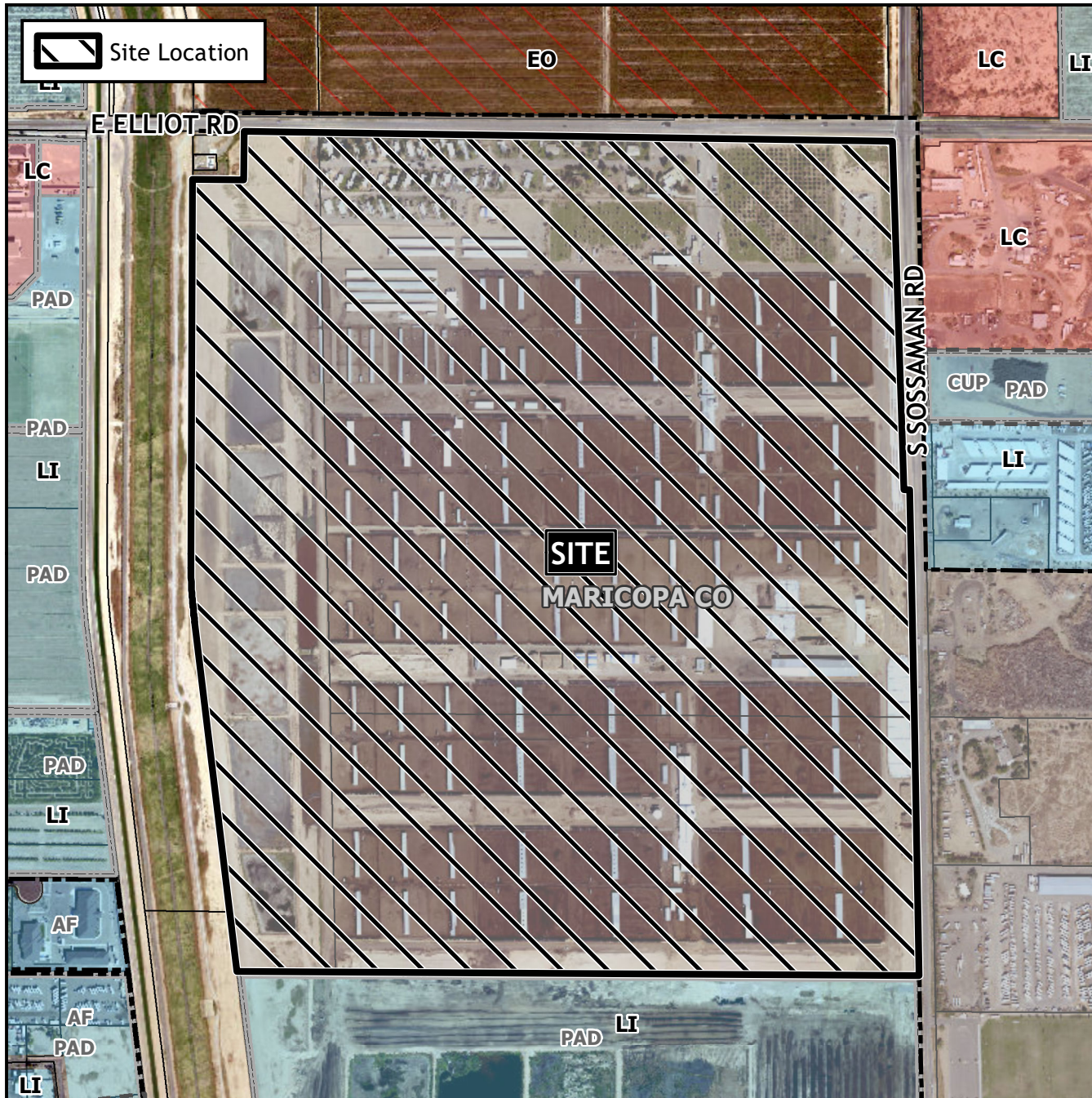


Design Review Vicinity Map: DRB22-00923

Case Details



Case:
DRB22-00923

Site / Address:
District 6. Within the 7100 to 7600 blocks of East Elliot Road (south side) and within the 3600 to 4200 blocks of South Sossaman Road (west side). Located west of Sossaman Road and south of Elliot Road. (270± acres).

Request:
Design Review for an industrial business park.

