



COMcheck Software Version 4.1.5.5

Exterior Lighting Compliance Certificate

Project Information

Energy Code: 2018 IECC
Project Title: POWER & ELLIOTT (DR)
Project Type: New Construction
Exterior Lighting Zone: 2 (Residential mixed use area (LZ2))

Construction Site: SEC OF POWER ROAD AND ELLIOTT
MESA, AZ 85212
Owner/Agent: Designer/Contractor:

Allowed Exterior Lighting Power

A Area/Surface Category	B Quantity	C Allowed Watts / Unit	D Tradable Wattage	E Allowed Watts (B X C)
ALDI RETAIL WALL (Illuminated area of facade wall or surface)	19119 f2	0.07		1434
FITNESS WALL (Illuminated area of facade wall or surface)	41789 f2	0.07		3134
CAR PARKING (Parking area)	263730 f2	0.04	No	10549
7-11 CONV. (Illuminated area of facade wall or surface)	2840 f2	0.07	No	213
GAS CANOPY (Free standing/attached sales canopy)	5430 f2	0.4	Yes	2172
Total Tradable Watts (a) =				17221
Total Allowed Watts (b) =				17502
Total Allowed Supplemental Watts (b) =				400

(a) Wattage tradeoffs are only allowed between tradable areas/surfaces.

(b) A supplemental allowance equal to 400 watts may be applied toward compliance of both non-tradable and tradable areas/surfaces.

Proposed Exterior Lighting Power

A Fixture ID : Description / Lamp / Wattage Per Lamp / Ballast	B Lamps/ Fixture	C # of Fixtures	D Fixture Watt.	E (C X D)
ALDI RETAIL WALL (Illuminated area of facade wall or surface 19119 f2): Non-tradable Wattage				
LED 4: SGE: WALL SCONCE: Other:	1	2	19	38
LED 5: SHE: DOWNLIGHT: Other:	1	2	12	24
LED 13: SL: WALL PACK: Other:	1	3	51	154
FITNESS WALL (Illuminated area of facade wall or surface 41789 f2): Non-tradable Wattage				
LED 6: SGE: WALL SCONCE: Other:	1	5	19	95
LED 7: SHE: DOWNLIGHT: Other:	1	2	12	24
LED 14: SL: WALL PACK: Other:	1	2	51	102
CAR PARKING (Parking area 263730 f2): Tradable Wattage				
LED 8: SA: TWIN HEAD POLE: Other:	2	15	274	4110
LED 9: SB: SINGLE HEAD POLE: Other:	1	1	137	137
LED 10: SC: SINGLE HEAD POLE: Other:	1	4	137	548
LED 11: SD: SINGLE HEAD POLE: Other:	1	7	137	959
LED 12: SF: SINGLE HEAD POLE: Other:	1	5	137	685
LED 12: C: SINGLE POLE HEAD: Other:	1	1	184	184
LED 12 copy 1: D: SINGLE POLE HEAD: Other:	1	1	184	184
LED 12 copy 2: E: SINGLE POLE HEAD: Other:	1	4	184	736
7-11 CONV. (Illuminated area of facade wall or surface 2840 f2): Non-tradable Wattage				

Project Title: POWER & ELLIOTT (DR)
Data filename: Z:\Shared\01_Projects\2022\22713_RKAA_Power and Elliot (DR)\01_Construction Documents\ENERGY\22713_IECC.cck
Report date: 07/25/24
Page 1 of 6

A Fixture ID : Description / Lamp / Wattage Per Lamp / Ballast	B Lamps/ Fixture	C # of Fixtures	D Fixture Watt.	E (C X D)
LED 14: B: CANOPY LIGHT: Other:	1	6	31	186
GAS CANOPY (Free standing/attached sales canopy 5430 f2): Tradable Wattage				
LED 13: A: CANOPY LIGHTS: Other:	1	32	86	2765
LED 13 copy 1: F: CANOPY LIGHTS: Other:	1	9	16	144
Total Tradable Proposed Watts =				10452

Exterior Lighting PASSES: Design 20% better than code

Exterior Lighting Compliance Statement

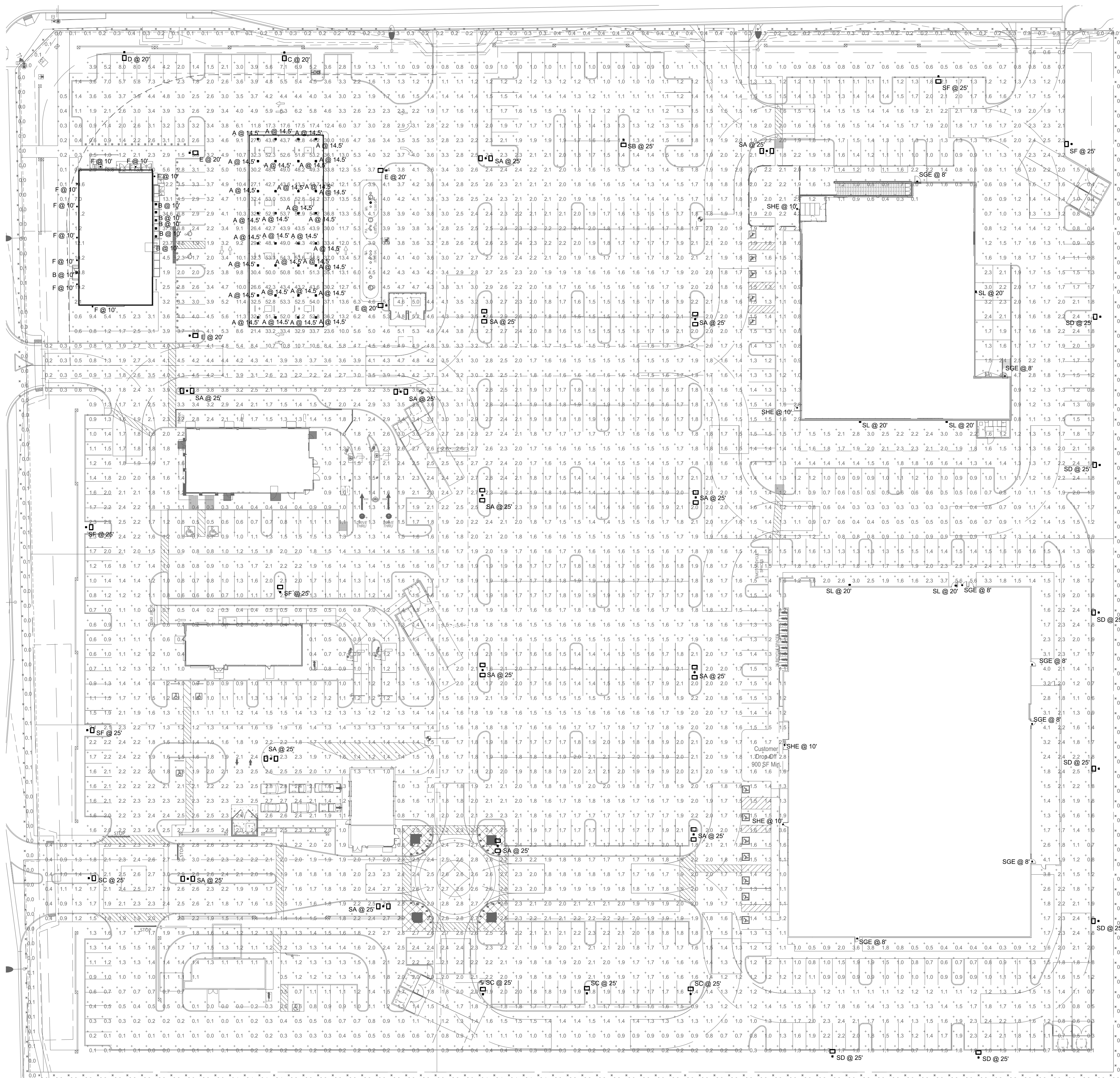
Compliance Statement: The proposed exterior lighting design represented in this document is consistent with the building plans, specifications, and other calculations submitted with this permit application. The proposed exterior lighting systems have been designed to meet the 2018 IECC requirements in COMcheck Version 4.1.5.5 and to comply with any applicable mandatory requirements listed in the Inspection Checklist.

HICHAM KHACHANE, PM.

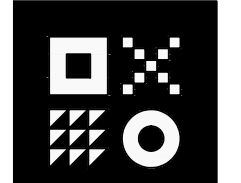
07/24/24

Statistics						
Description	Symbol	Avg	Max	Min	MaxMin	AvgMin
SETE - FC @ GRADE	+	2.8%	54.8%	0.0%	N/A	N/A
PROPERTY LINE - FC @ 3' AFG	X	0.1%	0.4%	0.0%	N/A	N/A

Symbol	Label	Quantity	Manufacturer	Catalog Number	Description	Lamp	Filename	Lumens Per Lamp	Light Loss Factor	Wattage
	A	32	CREE	CPY250-C-13L-S7K7-F-UL-DMA-MH-HZ	CPY250 Canopy Luminaire, 13L, Luminaire Package, 5700K, 70 CRI, Flat Lens, 120-277V	LED - 5700K COLOR TEMP	CPY250-C-13L-S7K7-F-UL-DMA-MH-HZ	14015	0.91	86.4
	B	6	CREE	CPY250-C-4L-S7K7-F-UL-DMA-MH-HZ	CONFIGURED FROM CPY250 Canopy Luminaire, 13L Luminaire Package, 5700K, 70 CRI, Flat Lens, 120-277V	LED - 5700K COLOR TEMP	CPY250-C-4L-S7K7-F-UL-DMA-MH-HZ	4890	0.91	31
	C	1	CREE	XSPUG-DHT-SME-BLS-24L-S7K7-UL-BE-N	CONFIGURED FROM XSPUG LED Street/Area Luminaire, Lupa, 24L Luminaire Package, Type II Medium Optic Distribution w/ Backlight Shield, 40k CCT, 70 CRI	LED - 5700K COLOR TEMP	XSPUG-DHT-SME-BLS-24L-S7K7-UL-BE-N	16900	0.91	184
	D	1	CREE	XSPUG-DHT-SME-BLS-24L-S7K7-UL-BE-N	CONFIGURED FROM XSPUG LED Street/Area Luminaire, Lupa, 24L Luminaire Package, Type II Medium Optic Distribution w/ Backlight Shield, 40k CCT, 70 CRI	LED - 5700K COLOR TEMP	XSPUG-DHT-SME-BLS-24L-S7K7-UL-BE-N	17400	0.91	184
	E	4	CREE	XSPUG-DHT-SME-BLS-24L-S7K7-UL-BE-N	CONFIGURED FROM XSPUG LED Street/Area Luminaire, Lupa, 24L Luminaire Package, Type II Medium Optic Distribution w/ Backlight Shield, 40k CCT, 70 CRI	LED - 5700K COLOR TEMP	XSPUG-DHT-SME-BLS-24L-S7K7-UL-BE-N	22801	0.91	184
	F	9	ALIV	CRM6WLT 2018 40 80 NN/N V1.0 L SB UP	CORE 6 WALL MOUNT WITH UR LIGHT	LED - 4000K COLOR TEMP	CORE-6-2000-90-4000K-80-degrees	2161	0.91	15.9
	SA	15	LITHONIA LIGHTING	(2) DEXO LED P6 30K 80CR T5W MVOLT SPA (FINISH) / SSS 22.5° W/2.5° BASE	TWIN-HEAD D-Series Size 0 Area Luminaire P6 Performance Package 3000K CCT 80 CRI Type 5 Wide	LED - 3000K	DEXO_LED_P6_30K_80 CRI_T5W_ws	15838	0.91	274
	SB	1	LITHONIA LIGHTING	DEXO LED P6 30K 80CR T5W MVOLT SPA (FINISH) / SSS 22.5° W/2.5° BASE	D-Series Size 0 Area Luminaire P6 Performance Package 3000K CCT 80 CRI Type 5 Wide	LED - 3000K	DEXO_LED_P6_30K_80 CRI_T5W_ws	15838	0.91	137
	SC	4	LITHONIA LIGHTING	DEXO LED P6 30K 80CR T5W MVOLT SPA HS (FINISH) / SSS 22.5° W/2.5° BASE	D-Series Size 0 Area Luminaire P6 Performance Package 3000K CCT 80 CRI Type 5 Wide Housewide Shield Control	LED - 3000K	DEXO_LED_P6_30K_80 CRI_T5W_HS_ws	10758	0.91	137
	SD	7	LITHONIA LIGHTING	DEXO LED P6 30K 80CR BLCA MVOLT SPA (FINISH) / SSS 22.5° W/2.5° BASE	D-Series Size 0 Area Luminaire P6 Performance Package 3000K CCT 80 CRI Type 5 Extreme Backlight Control	LED - 3000K	DEXO_LED_P6_30K_80 CRI_BLCA_ws	11213	0.91	137
	SF	5	LITHONIA LIGHTING	DEXO LED P6 30K 80CR T5W MVOLT SPA HS (FINISH) / SSS 22.5° W/2.5° BASE	D-Series Size 0 Area Luminaire P6 Performance Package 3000K CCT 80 CRI Type 5 Medium Housewide Shield	LED - 3000K	DEXO_LED_P6_30K_80 CRI_T5W_HS_ws	12938	0.91	137
	SGE	7	LITHONIA LIGHTING	WDOE2 LED P2 30K 80CR T3M MVOLT SRM EDCNC (FINISH)	WDOE2 LED WITH P2 - PERFORMANCE PACKAGE, 3000K, 80CRI, TYPE 3 MEDIUM OPTIC W/EM BATTERY PACK	LED - 3000K	WDOE2_LED_P2_30K_80CRI_T3M_ws	1964	0.91	15,9815
	SHE	4	DMF LIGHTING	DRDN-JD 11005M / DROSS 4 R 10 9 30 EM	4IN SURFACE MOUNTED DOWNLIGHT W/EM BATTERY PACK	LED - 3000K	DRDSS-4R-10500	1015	0.91	11.8
	SL	5	LITHONIA LIGHTING	WDOE3 LED P1 80CRI 30K MVOLT SRM (FINISH)	WDOE3 LED WITH P1 - PERFORMANCE PACKAGE, 3000K, 80CRI, TYPE 3 OPTIC	LED - 3000K	WDOE3_LED_P1_70CRI_LRJ_30K_ws	6933	0.91	51,7177



1 EXTERIOR PHOTOMETRIC
SCALE: 1/40"=1'-0"



ARDEBILI
Engineering

Project Number: 22713 | Project Manager: HK
7328 E Stetson Dr., Scottsdale, AZ 85251
P: 480.626.7072 | ardebilieng.com

POWER AND ELLIOTT (DR)
22713
ADDRESS
SEC OF POWER ROAD AND ELLIOT, AZ



Project No: 22713
Date: 11/16/2022
Drawn By: HK
Reviewed By: PC

No	Revision	Date

Sheet Title:
EXTERIOR
PHOTOMETRIC

Sheet No.:

EO.1

