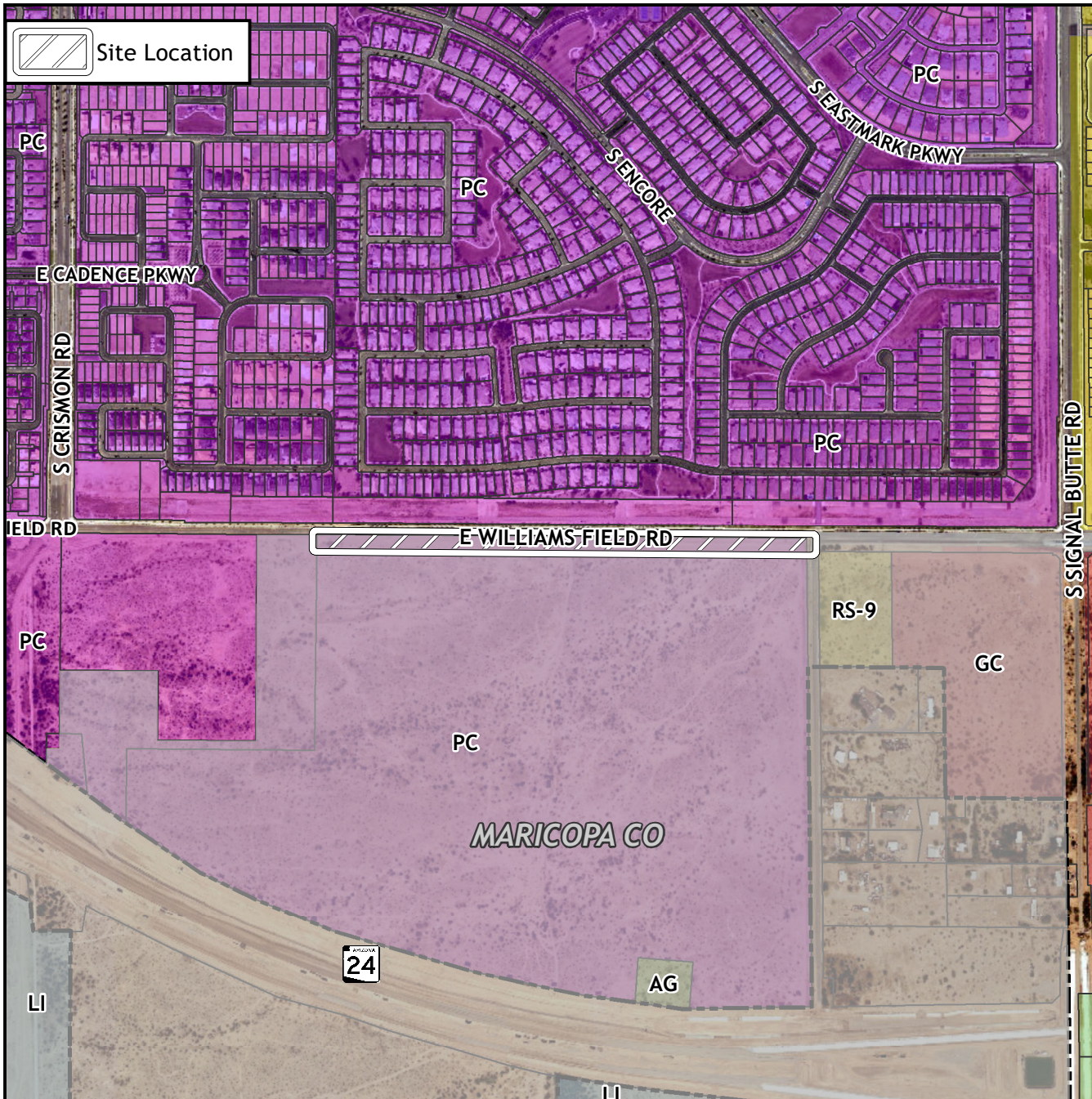


Final Plat Vicinity Map



Case Details

Project:

Map of Dedication for Williams Field Road

SUB21-01187

Site/Address:

District 6. Within the 10200 to 10600 blocks of East Williams Field Road. Located along Williams Field Road, between Crismon and Signal Butte Roads (3.8± acres).

Description:

Shea Homes Limited Partnership, Developers; Richard G. Alcocer, Coe and Van Loo, LLC, Surveyor.

