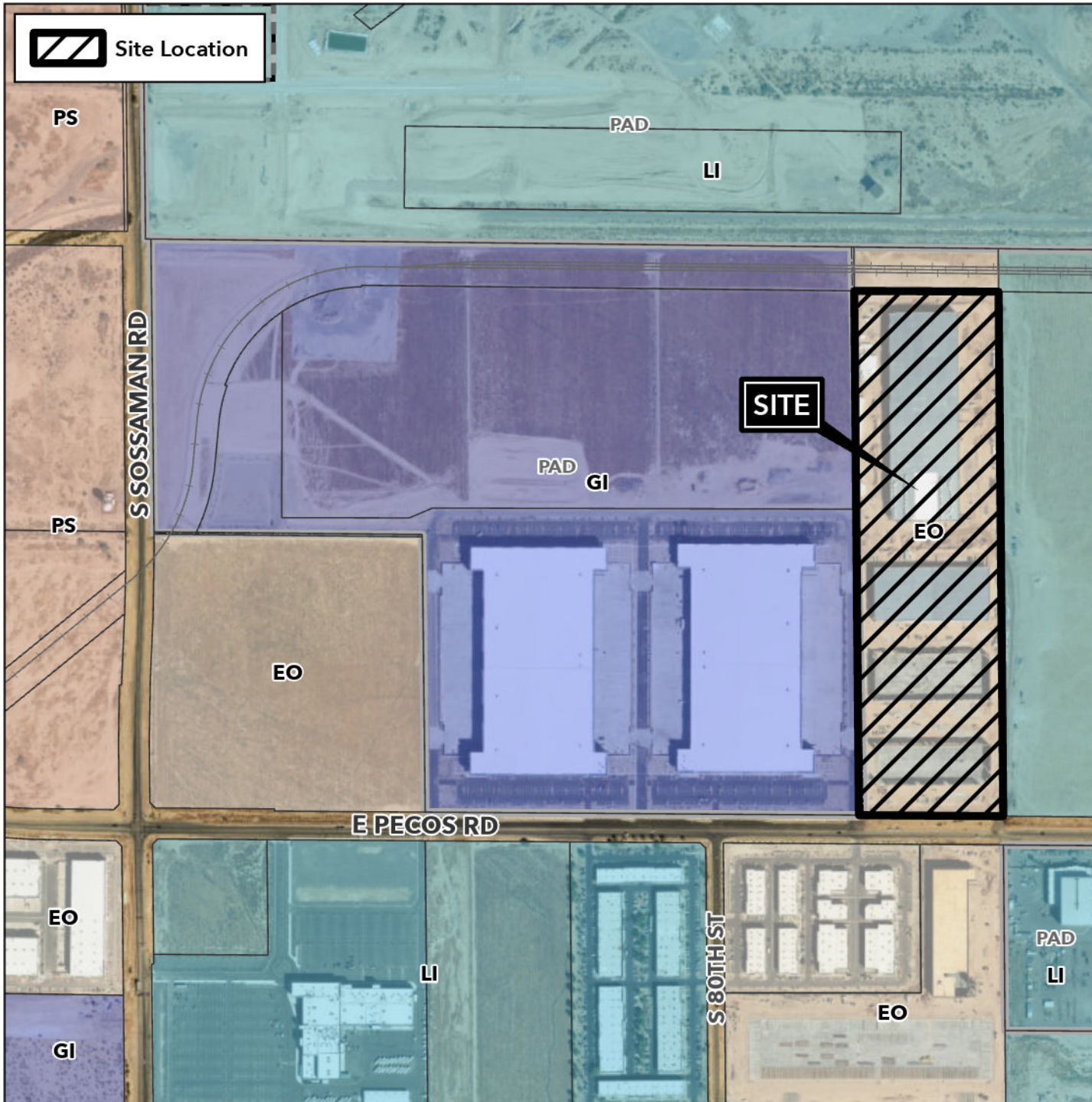


# Planning and Zoning Vicinity Map: ZON24-00818

## Case Details



Site Location



### Case:

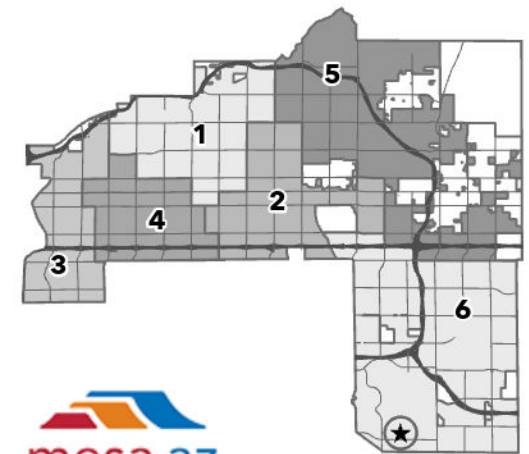
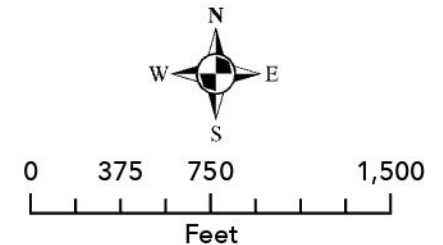
ZON24-00818

### Site / Address:

(District 6). 36± acres located approximately 3,300 feet east of the northeast corner of South Sossaman Road and East Pecos Road.

### Request:

Rezone from Employment Opportunity (EO) to General Industrial (GI).



  
mesa·az