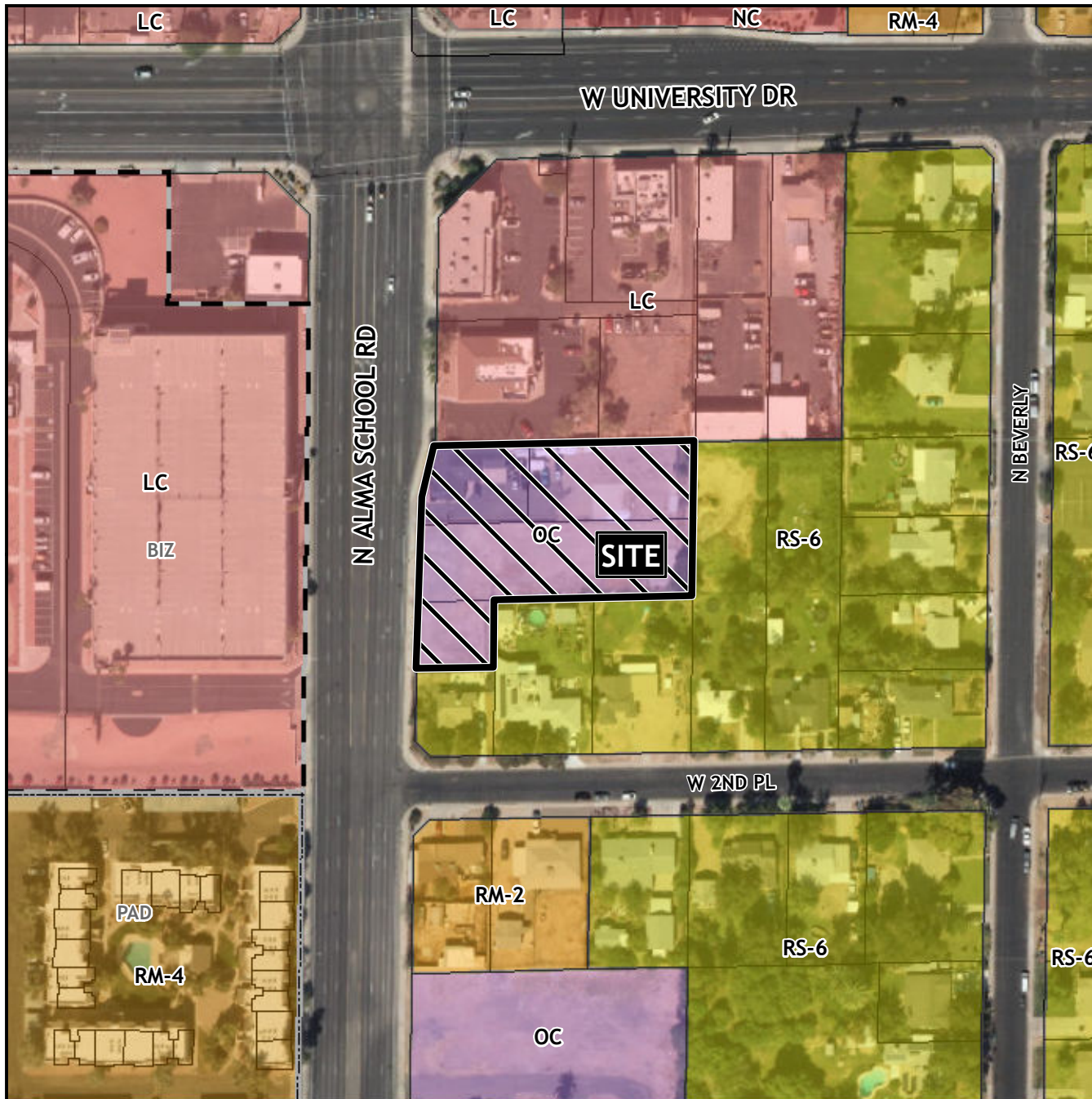


Planning and Zoning Vicinity Map: ZON23-00378

Case Details



CASE:

ZON23-00378

SITE / ADDRESS:

(District 4). Within the 300 block of North Alma School Road (east side). Located south of University Drive and east of Alma School Road. (1± acre).

REQUEST:

Rezone from Office Commercial (OC) to Limited Commercial with a Bonus Intensity Zone overlay (LC-BIZ), Site Plan Review, and Council Use Permit. This request will allow for a mixed-use development.

