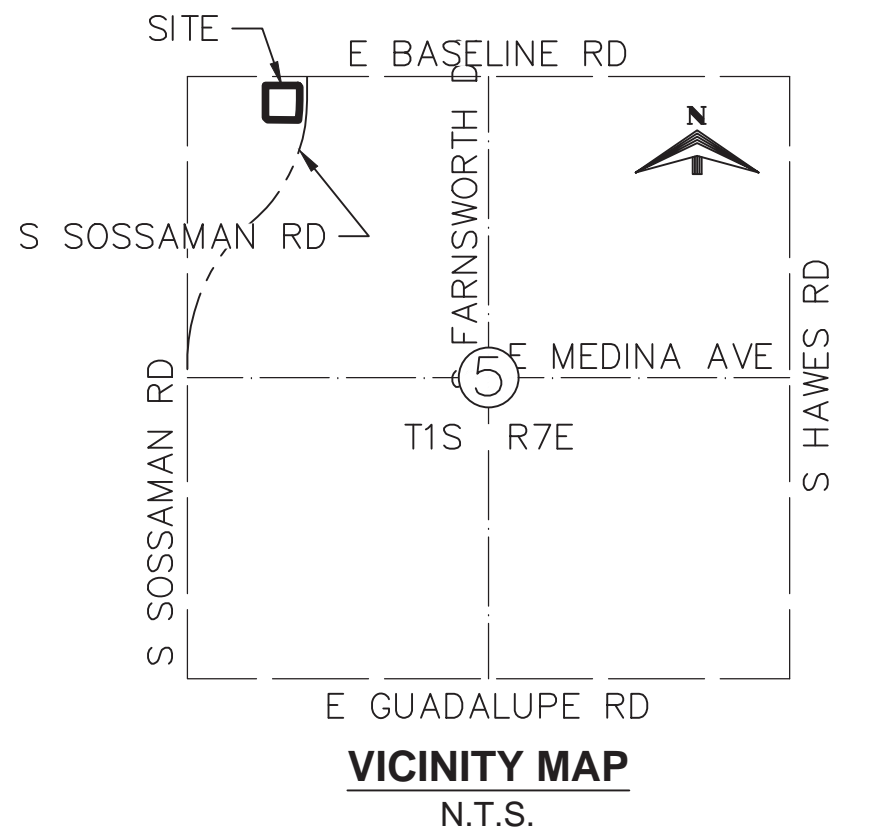
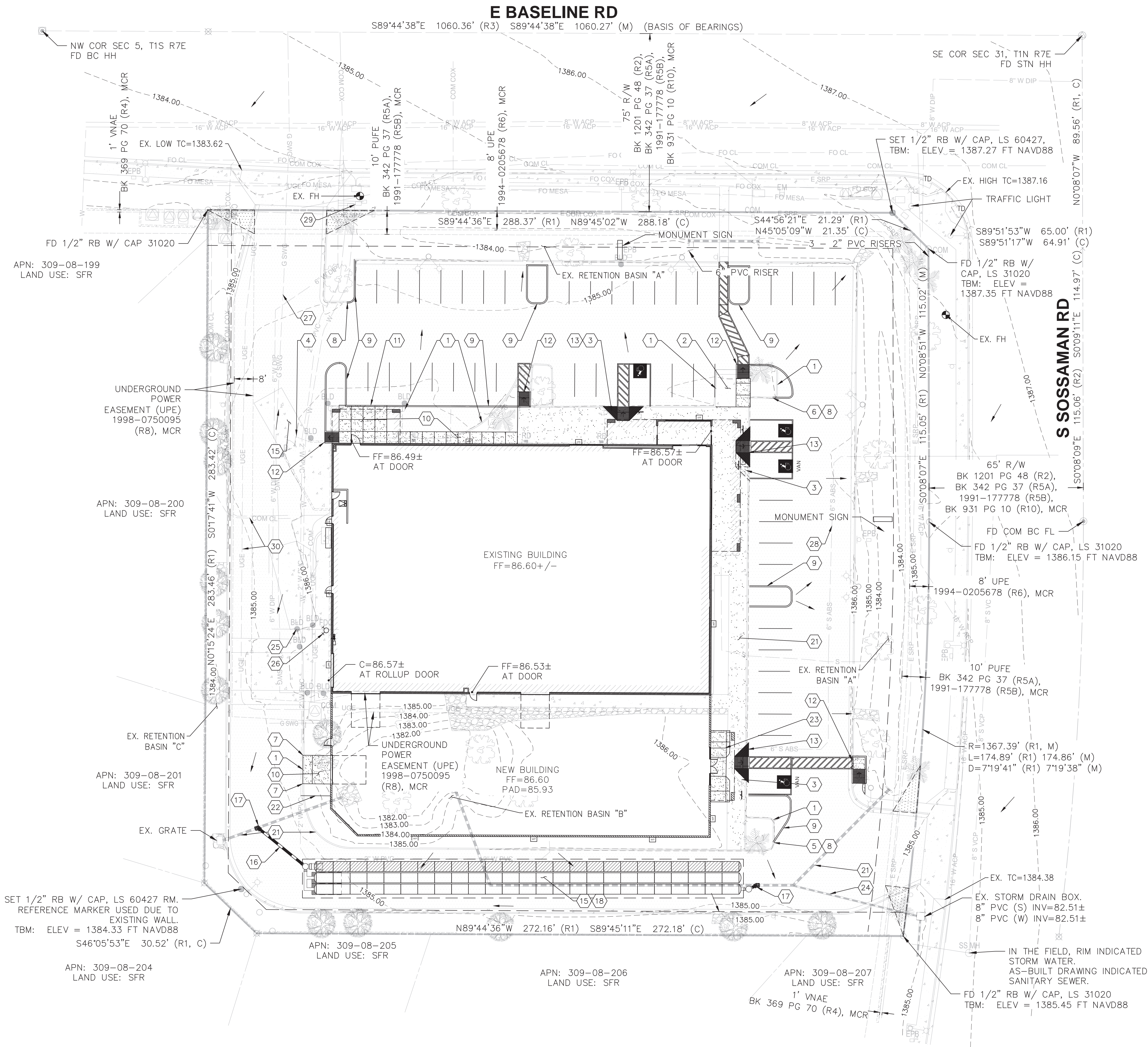


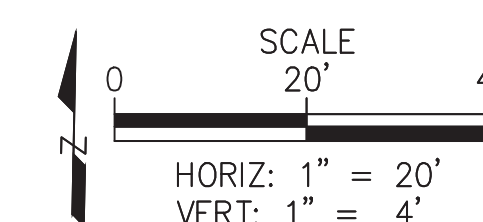
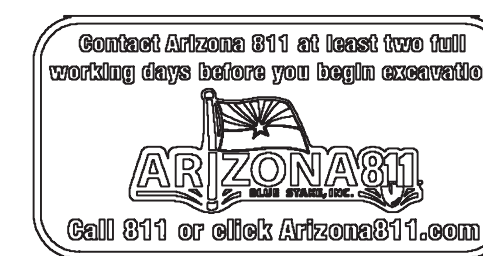
\\SE_SERVER\SE Projects\C-FINN ARCHITECTS\S250121 UTV Stereo\Design 3D\SHEETS\UTV GDSP C1.0-C3.0.dwg Feb. 26, 2025 9:14am Spenc



CONSTRUCTION NOTES:

1. REMOVE EXISTING CURB, AS DEPICTED, SAWCUT CONCRETE TO NEAREST JOINT.
2. REMOVE EXISTING SIDEWALK AS DEPICTED, SAWCUT CONCRETE TO NEAREST JOINT.
3. REMOVE EXISTING SIDEWALK RAMP, SAWCUT CONCRETE TO NEAREST JOINT.
4. REMOVE EXISTING WALL AND CONCRETE, SAWCUT.
5. MAKE NEW CURB TANGENT TO EXISTING CURB AT TIE-IN POINT.
6. MAKE NEW CURB PARALLEL TO EXISTING CURB AT TIE-IN POINT.
7. SAWCUT EXISTING CURB TO CREATE CURB TERMINATION AS DEPICTED ON MAG STD DTL 222.
8. INSTALL TWO REBAR DOWELS 4 INCH PENETRATION DEPTH INTO EXISTING CURB, WITH EPOXY AND CAST 4 INCHES INTO NEW CURB.
9. 6" SINGLE CURB PER MAG DTL 222.
10. SIDEWALK PER MAG 230, WIDTH PER PLAN.
11. WHERE NEW SIDEWALK IS ADJACENT TO CURB, INSTEAD OF INSTALLING CURB, INSTALL A SIDEWALK THICKENED EDGE.
12. INSTALL NEW ADA SIDEWALK RAMP, TYPE D PER COM STD DTL M-44.05.
13. INSTALL PERPENDICULAR ADA CURB RAMP PER MAD STD DTL 238-1.
14. STANDARD ASPHALT PAVEMENT SECTION IN PARKING SPOTS.
15. HEAVY DUTY ASPHALT PAVEMENT SECTION IN DRIVE AISLES.
16. DOUBLE WALL, SOIL TIGHT HDPE STORM DRAIN PIPE, 12 INCH, SLOPE PER PLAN. TRENCH BACK FILL PER MESA STANDARD DETAIL M-19.05.
17. CONNECT TO EXISTING STORMDRAIN LINE, INSTALL CONCRETE PIPE COLLAR PER MAG STD DTL 505.
18. CONSTRUCT STORMTECH SC-800 CHAMBER SYSTEM.
19. MAINTAIN FLOW DIRECTION OF PAVEMENT AWAY FROM THE BUILDING TO THE SURROUNDING RETENTION FACILITIES.
20. ADA PATH EXISTS AT TOP OF DRIVE TO CROSS EAST/WEST.
21. PROTECT IN PLACE, INFRASTRUCTURE TO REMAIN, TYP.
22. EXISTING 2-INCH WATERLINE, CONNECT TO BUILDING, ABANDON THE REMAINDER OF THE LINE GOING SOUTH OF THE BUILDING.
23. EXTEND EXISTING 6 INCH SEWER AND CONNECT TO THE BUILDING.
24. EXISTING 8-INCH STORMDRAIN BLEED-OFF LINE, PROTECT IN PLACE.
25. EXISTING 6-INCH DIP FIRELINE TO EXISTING BUILDING, INTERNAL BUILDING CONNECTION TO EXPAND FIRE SPRINKLE SYSTEM TO NEW BUILDING.
26. EXISTING FDC, EXISTING FIRE FISER INSIDE OF BUILDING.
27. EXISTING 2-INCH GAS LINE.
28. EXISTING 6-INCH SEWER SERVICE.
29. EXISTING WATER METERS AND SERVICES.
30. EXISTING UNDERGROUND ELECTRIC AND COMMUNICATION LINES.

GENERAL NOTE: WHEN WORKING ADJACENT TO EXISTING INFRASTRUCTURE, PROTECT IN PLACE. CONTRACTOR TO REPAIR, PATCH OR REPLACE ALL DAMAGED OR DISTURBED EXISTING INFRASTRUCTURE.



REV NO.	COMMENT	DATE
<div><div><div><div><div><div></div><div>SITE ENGINEERS</div></div></div><div><div><div></div><div>FINN ARCHITECTS</div></div></div></div><div>1763 E EVERGREEN ST MESA, ARIZONA 85203 TEL: 480-489-4450 EMAIL: Spencer@theSiteEngineers.com</div></div></div>		
UTV STEREO 7561 E. BASELINE ROAD MESA, ARIZONA 85209 PRELIMINARY CIVIL IMPROVEMENTS PLAN		
SE NO. S250121	DESIGNED SJE	DRAWN SJE
CHECKED KLE	SHEET NO. 02 of 02	C2.0