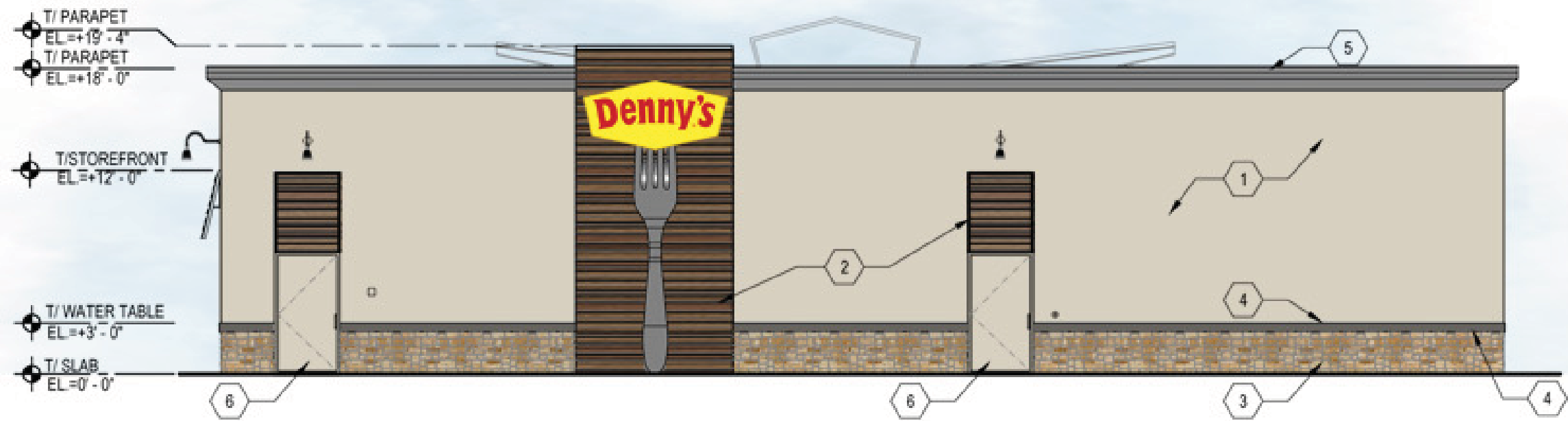
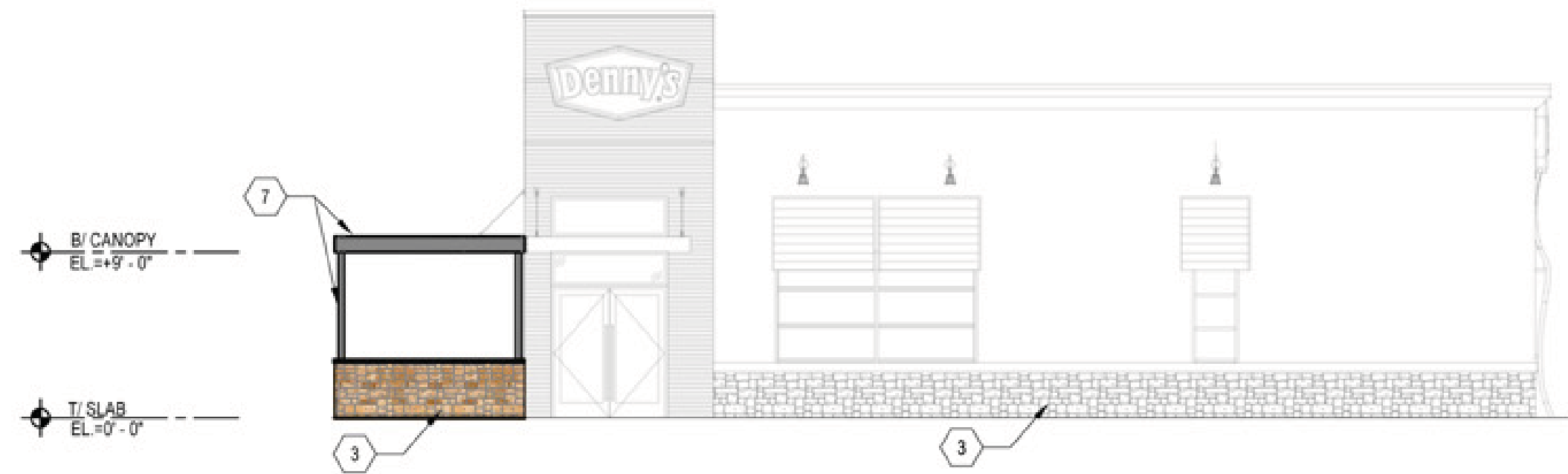


SYMBOL	MATERIAL	NAME	NUMBER	MANUF.	AREA (N)	AREA (S)	AREA (E)	AREA (W)	AREA (TOTAL)
1	EIFS FINISH	LIGHT ASPIRATION	DE 6155	DUNN EDWARDS	880 SQ.FT.	500 SQ.FT.	535 SQ.FT.	680 SQ.FT.	2,595 SQ.FT.
2	COMPOSITE WOOD DECKING	TIGERWOOD * WALNUT	-	MOISTURESHIELD	215 SQ.FT.	200 SQ.FT.	65 SQ.FT.	40 SQ.FT.	520 SQ.FT.
3	STONE VENEER	LAUDER STONE - BUFF ROUGHBACK	-	MEZGER	150 SQ.FT.	110 SQ.FT.	110 SQ.FT.	130 SQ.FT.	500 SQ.FT.
4	EIFS FINISH (ACCENT)	LOOKING GLASS	DE 6376	DUNN EDWARDS	30 SQ.FT.	25 SQ.FT.	25 SQ.FT.	25 SQ.FT.	105 SQ.FT.
5	PRE-FINISHED METAL COPING	LOOKING GLASS	DE 6376	DUNN EDWARDS	30 SQ.FT.	45 SQ.FT.	60 SQ.FT.	75 SQ.FT.	210 SQ.FT.
6	HOLLOW MTL DOORS	PAINTED LIGHT ASPIRATION	DE 6155	DUNN EDWARDS	60 SQ.FT.	-	-	-	60 SQ.FT.
7	STEEL BEAM	LOOKING GLASS	DE 6376	DUNN EDWARDS	-	40 SQ.FT.	10 SQ.FT.	10 SQ.FT.	60 SQ.FT.
8	METAL DECK (HORIZONTAL)	HOT JAZZ	DEA 107	DUNN EDWARDS	-	180 SQ.FT.	150 SQ.FT.	-	330 SQ.FT.
9	GLAZING	GLASS	-	-	-	290 SQ.FT.	150 SQ.FT.	75 SQ.FT.	575 SQ.FT.
10	ALUMINUM COMPOSITE	COLOR: HOT JAZZ	DEA 107	DUNN EDWARDS	-	620 SQ.FT.	-	-	620 SQ.FT.



4 north elevation

SCALE: 1/8"=1'-0"



6 east elevation patio

SCALE: 1/8"=1'-0"



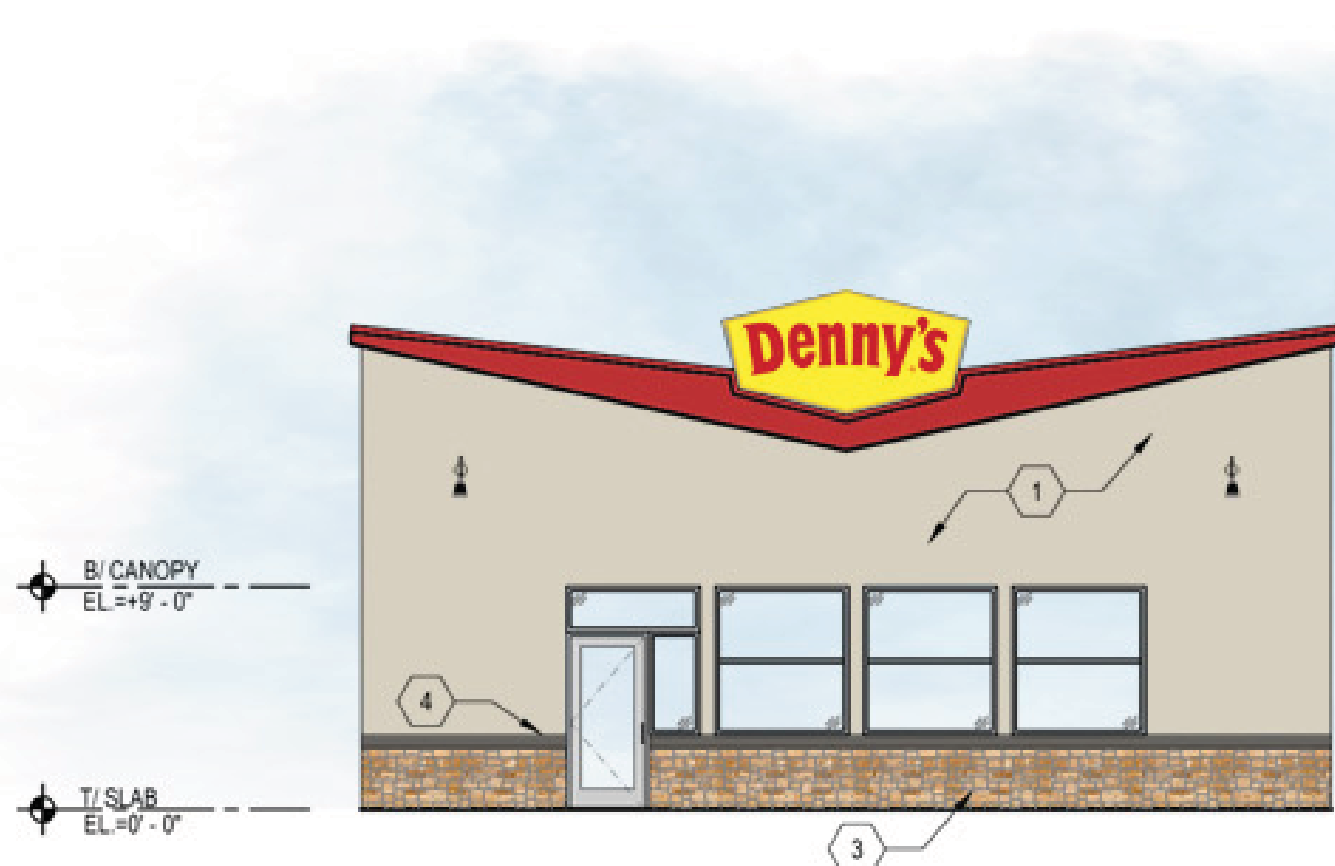
3 east elevation

SCALE: 1/8"=1'-0"



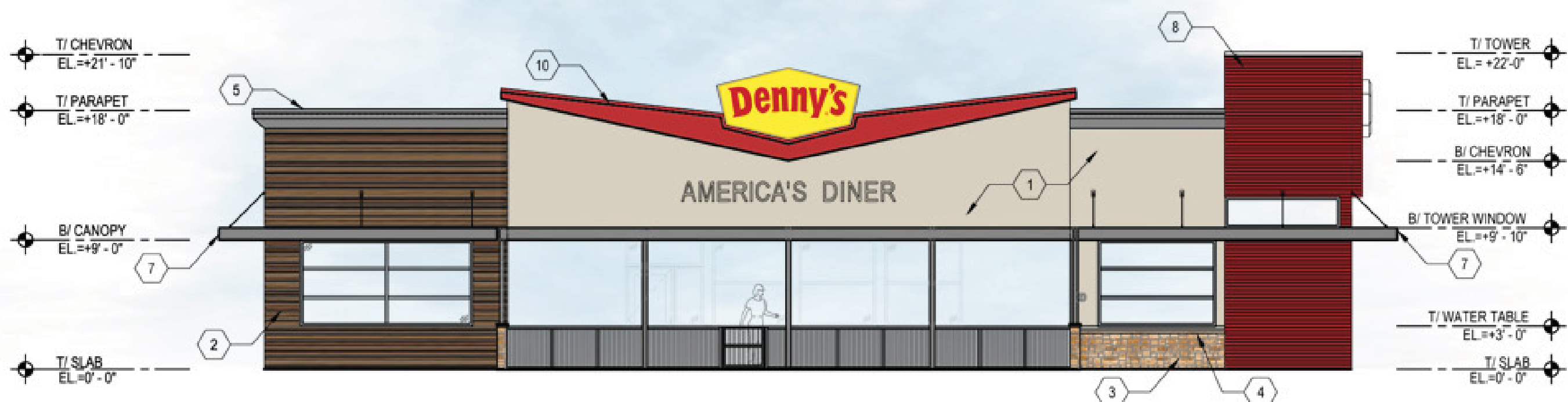
2 west elevation

SCALE: 1/8"=1'-0"



5 south elevation patio

SCALE: 1/8"=1'-0"

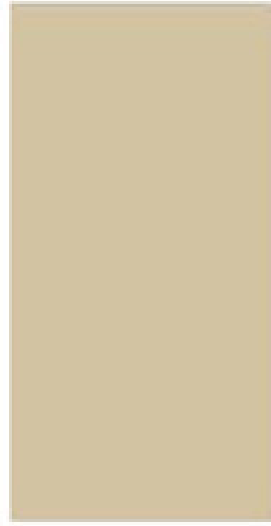


1 south elevation

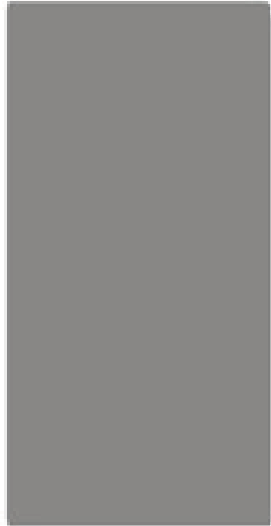
SCALE: 1/8"=1'-0"

materials

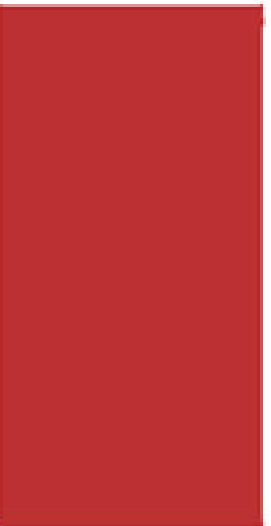
PAINT by Dunn Edwards



DE 6155
LIGHT ASPIRATION

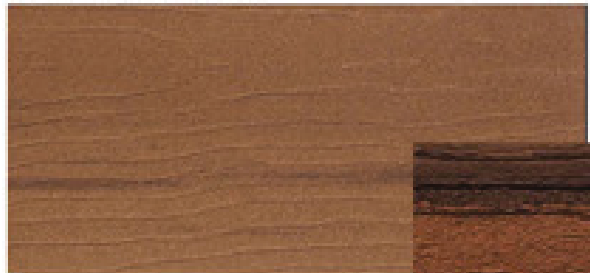


DE 6376
LOOKING GLASS
STEEL ACCENT COLOR

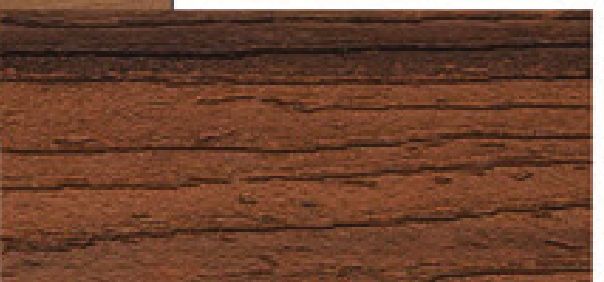


DEA 107
HOT JAZZ

COMPOSITE WOOD DECKING by Moistureshield



TIGERWOOD 2x4 & 2x6



WALNUT

STONE by MEZGER



LAUDER STONE - BUFF | ROUGHBACK

general notes:

- FIELD VERIFY EXISTING CONDITIONS.
- DO NOT SCALE DRAWINGS. RELY ONLY UPON ARCHITECT'S WRITTEN DIMENSIONS.
- PROVIDE BLOCKING BEHIND ALL ATTACHED BUILDING SIGNAGE.
- COORDINATE EXTERIOR ELEVATIONS WITH ELECTRICAL AND MECHANICAL DRAWINGS FOR PLACEMENT OF LIGHTING, WALL HYDRANTS, MECHANICAL LOUVERS, ETC.
- ALL UTILITY BOXES (ELECTRICAL PANELS, GAS METER, ETC.) ARE TO BE PAINTED TO MATCH EIFS IF PERMISSIBLE BY THE LOCAL UTILITY COMPANY.
- ALL METAL COMPONENTS ON EXTERIOR ARE TO BE PREFORMED AND PREFINISHED WHERE POSSIBLE.
- ALL DOORS AND WINDOWS SHALL BE DARK BRONZE ANODIZED ALUMINUM WITH GLASS AS SELECTED BY OWNER AND ARCHITECT.
- CAULK LINE AROUND WINDOWS AND DOORS SHALL BE 3/8" WIDE.
- EXTERIOR WALL FINISH TO BE INSTALLED IN STRICT ACCORDANCE WITH MANUFACTURER'S SPECIFICATIONS.
- ALL EXTERIOR LIGHT FIXTURES SHALL BE PREFINISHED. REFER TO ELECTRICAL DRAWINGS.
- ABBREVIATION "CJ" DENOTES CONTROL JOINT.
- COORDINATE ALL EXTERIOR SIGNS, CANOPIES, AWNINGS AND "AMERICA'S DINER" PANELS WITH OWNER'S VENDOR.
- DOORS AND WINDOWS ELEVATIONS AND DETAILS WILL BE PROVIDED ON A SEPARATE SHEET.



mrt design llc
architecture
interior design
facilities management

340 east palm lane
suite 304
phoenix, arizona
85004
p 602.667.9098
f 602.331.3558
www.mrtdesignllc.com

THIS DRAWING IS AN INSTRUMENT OF SERVICE AND THE PROPERTY OF MRT DESIGN, LLC AND SHALL REMAIN THEIR PROPERTY. THE USE OF THIS DRAWING SHALL BE RESTRICTED TO THE SITE FOR WHICH IT WAS PREPARED, AND REPRODUCTION OR PUBLICATION BY ANY METHOD, IN WHOLE OR IN PART, IS PROHIBITED WITHOUT THE WRITTEN PERMISSION OF MRT DESIGN, LLC.

JOB NUMBER
22006

denny's restaurant #9633
mesa new build

4248 S. SIGNAL BUTTE ROAD
MESA, ARIZONA 85212

PROJECT

REVISIONS

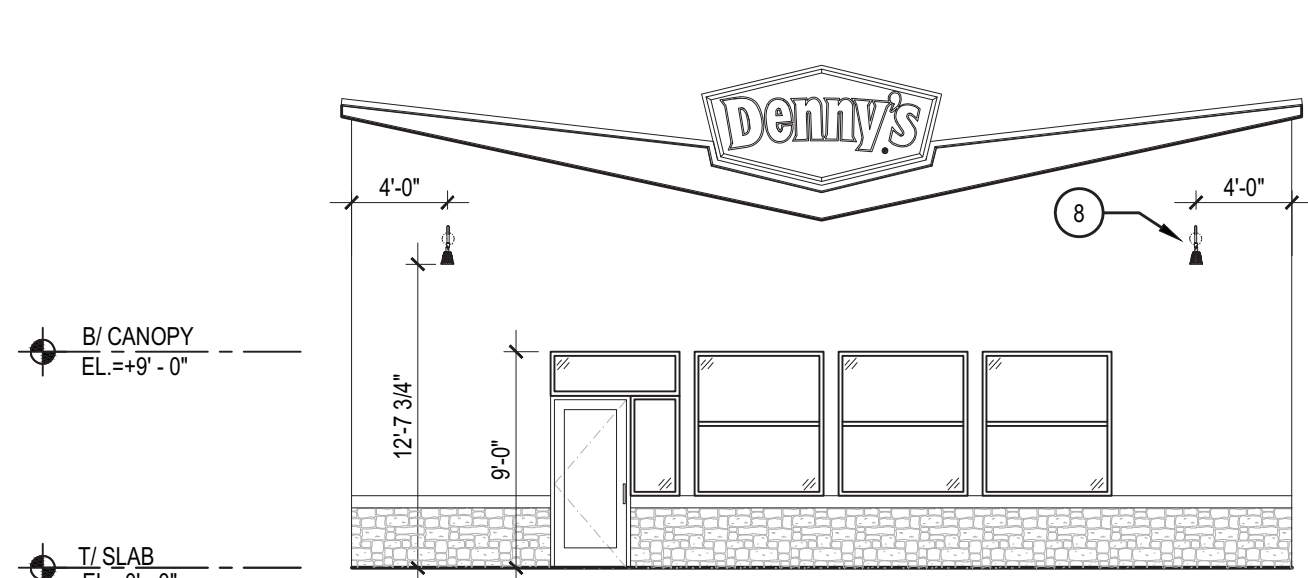
DRAWN BY
CHECKED BY

DATE ISSUED
SHEET DESCRIPTION



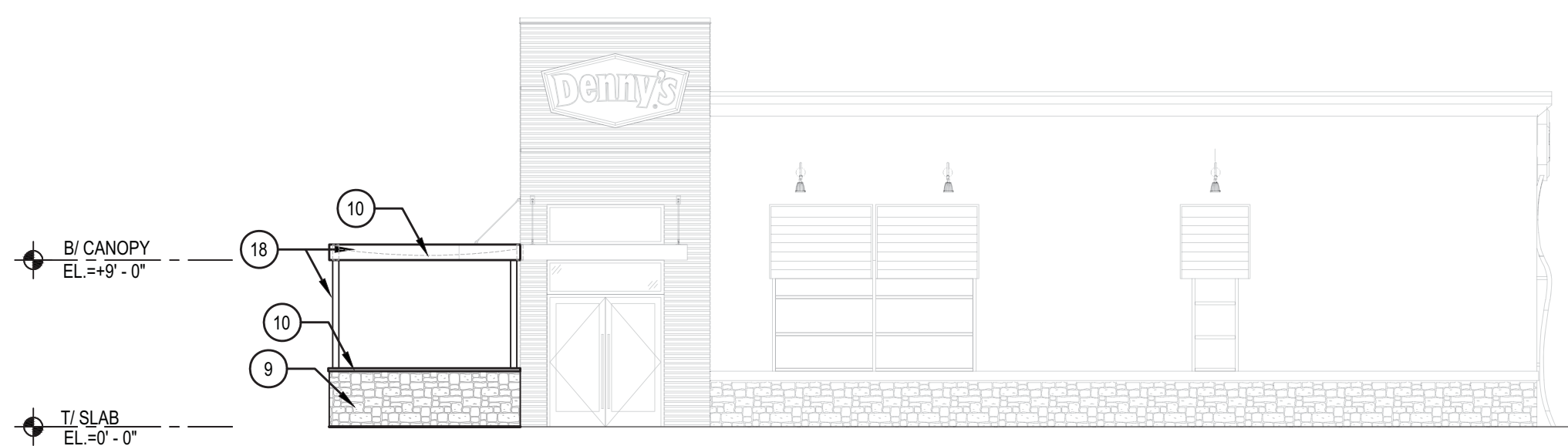
SHEET
A7.1
OF
-

PLOTTED BY OMAR YOUSSEF ON 10/9/2022 11:34 AM AT 0.32006 SITE ADAPT A DENNY'S PROTOTYPE IN MESA, ARIZONA\DRAWINGS\22006_DENNY'S MESA_CD.DWG



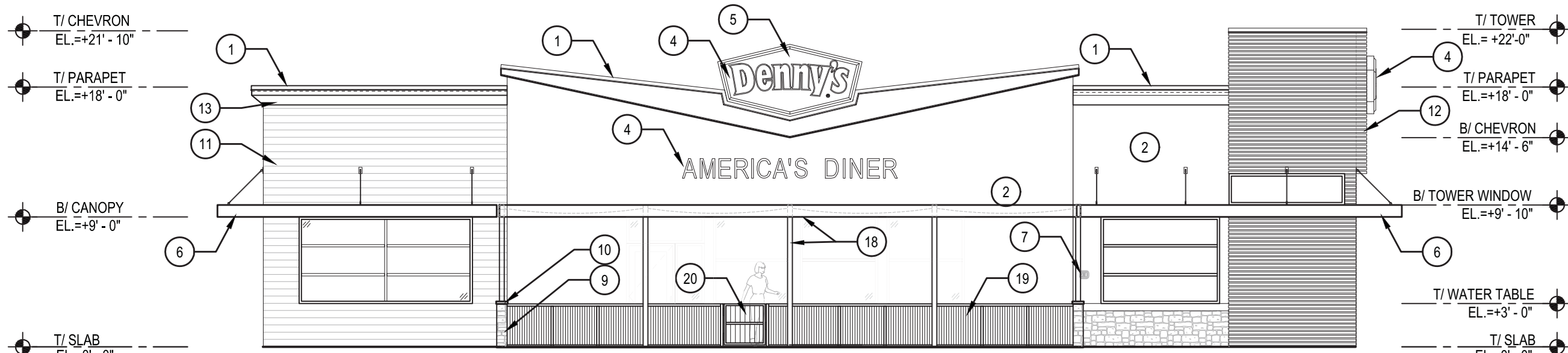
5 south elevation
patio

SCALE: 1/8"=1'-0"



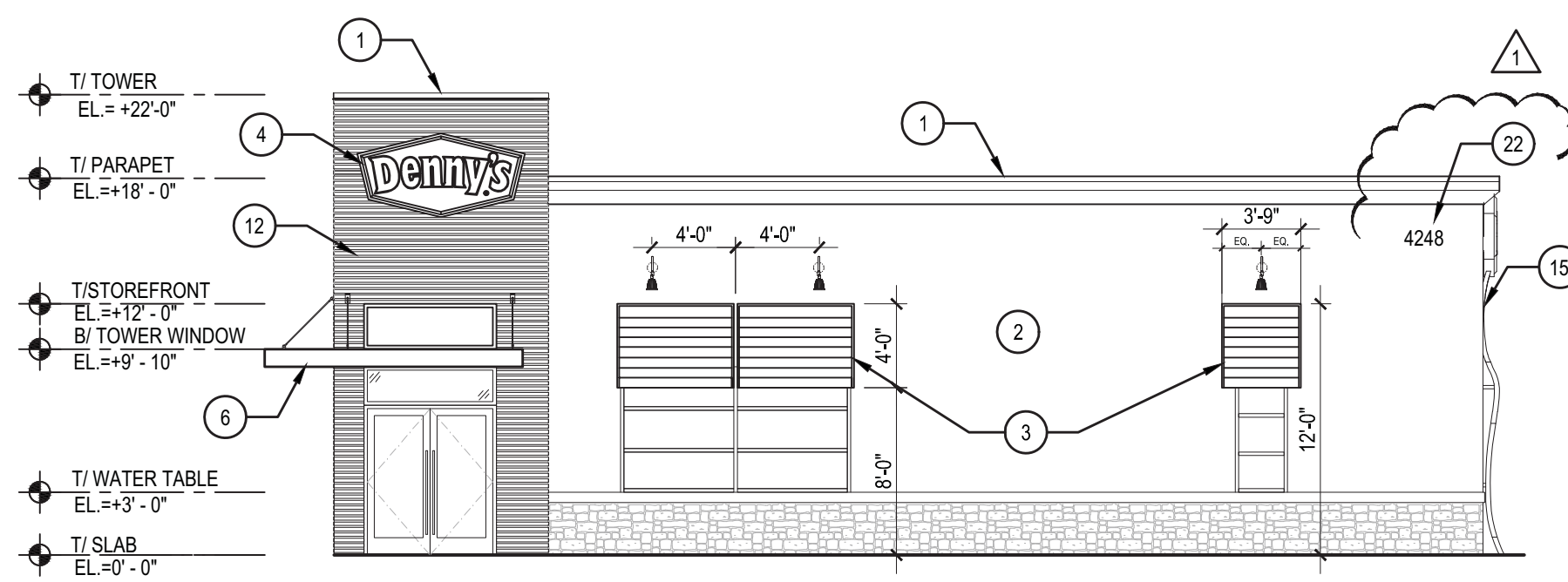
6 east elevation
patio

SCALE: 1/8"=1'-0"



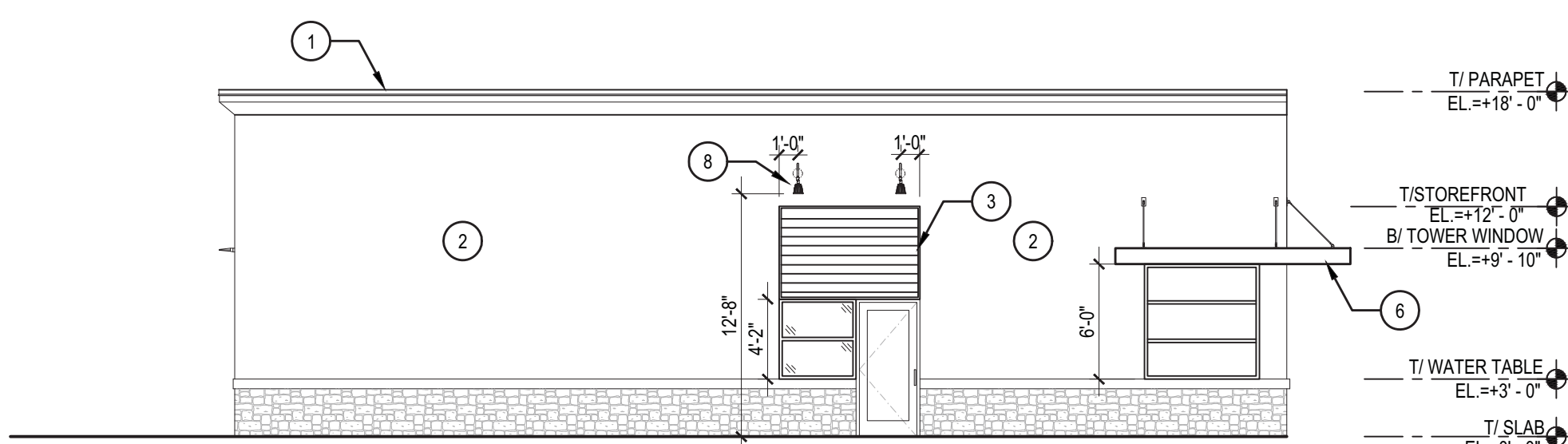
1 south elevation

SCALE: 1/8"=1'-0"



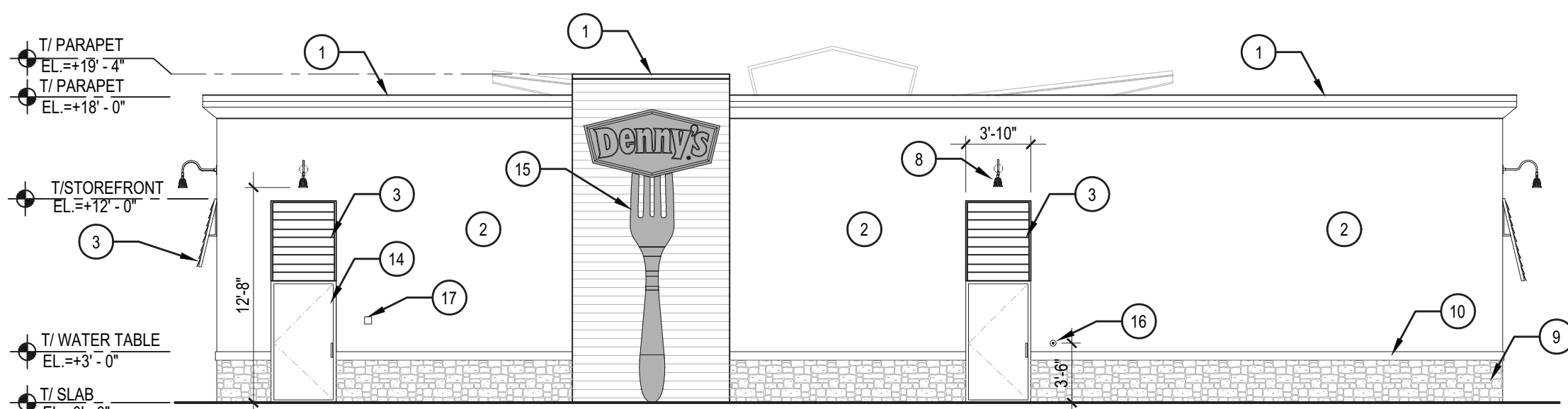
3 east elevation

SCALE: 1/8"=1'-0"



2 west elevation

SCALE: 1/8"=1'-0"



4 north elevation

SCALE: 1/8"=1'-0"

keynotes:

1. PREFINISHED ALUMINUM COPING CAP WITH CONTINUOUS CLEAT, COLOR PER EXTERIOR FINISH SCHEDULE/MATERIAL BOARD. SLOPE TO DRAIN TO ROOF, TYPICAL.
2. EXTERIOR INSULATION AND FINISH SYSTEM (EIFS); DRYVIT OUTSULATION PLUS, 2" THICK SANDBLAST FINISH, PAINT PER EXTERIOR SCHEDULE AND MATERIAL BOARD.
3. AWNING AND FRAME, PROVIDE BLOCKING AS REQUIRED FOR INSTALLATION. CONFIRM MOUNTING REQUIREMENTS WITH OWNER'S VENDOR.
4. SIGNAGE BY OTHERS. GENERAL CONTRACTOR SHALL PROVIDE BLOCKING AND POWER AS REQUIRED. COORDINATE INSTALLATION LOCATION WITH OWNER'S VENDOR.
5. FACE OF SIGN SHALL BE FLUSH WITH CHEVRON.
6. PREFABRICATED CANOPY, POWDER COATED STEEL COLUMNS AND BEAMS. CONTRACTOR SHALL SUBMIT SHOP DRAWINGS. COVER TO BE CUSTOM SHADE CANOPY COLOR PER MATERIAL BOARD. VENDOR TO COORDINATE BUILDING CONNECTION WITH STRUCTURAL ENGINEER.
7. KNOX BOX. GC SHALL COORDINATE EXACT FIELD LOCATION WITH LOCAL FIRE MARSHAL AND BUILDING INSPECTOR.
8. WALL MOUNTED LIGHT FIXTURE
9. STACKED STONE VENEER
10. STONE VENEER WAINSCOT CAP
11. FAUX WOOD SIDING "TREX" OVER AIR MOISTURE BARRIER. INSTALL PER MANUFACTURER SPECIFICATION. SEE COLORED ELEVATION FOR PATTERN. ALTERNATE 50/50 BETWEEN BOTH COLORS. WALNUT & TIGERWOOD.
12. ALUMINUM SLAT SYSTEM. POWDER COATED
13. TERMINATE WOOD VENEER PER MANUFACTURER GUIDELINES.
14. DOOR AND FRAME TO BE PAINTED TO MATCH ADJACENT EIFS.
15. DENNY'S LED FORK SIGN.
16. DOORBELL
17. CO2 REMOTE FILL PORT.
18. POWDER COATED BLACK STEEL POSTS AND BEAMS
19. WROUGHT IRON RAILING POWDER COATED BLACK. GC TO PROVIDE SHOP DRAWINGS FOR ARCHITECT APPROVAL.
20. EMERGENCY ACCESS SWING GATE.
21. CANOPY FABRIC BEYOND. COLOR TO MATCH DENNY'S RED AND ALUMINUM SLAT SYSTEM.
22. ADDRESS IDENTIFICATION NUMBER, FACING THE STREET FRONTING THE PROPERTY. ADDRESS IDENTIFICATION CHARACTERS SHALL CONTRAST WITH THEIR BACKGROUND. ADDRESS NUMBERS SHALL BE ARABIC NUMBERS. NUMBERS SHALL BE A MINIMUM OF 12 INCHES HIGH WITH A MINIMUM STROKE WIDTH OF 2 INCHES.



general notes:

1. FIELD VERIFY EXISTING CONDITIONS.
2. DO NOT SCALE DRAWINGS. RELY ONLY UPON ARCHITECT'S WRITTEN DIMENSIONS.
3. PROVIDE BLOCKING BEHIND ALL ATTACHED BUILDING SIGNAGE.
4. COORDINATE EXTERIOR ELEVATIONS WITH ELECTRICAL AND MECHANICAL DRAWINGS FOR PLACEMENT OF LIGHTING, WALL HYDRANTS, MECHANICAL LOUVERS, ETC.
5. ALL UTILITY BOXES (ELECTRICAL PANELS, GAS METER, ETC.) ARE TO BE PAINTED TO MATCH EIFS IF PERMISSIBLE BY THE LOCAL UTILITY COMPANY.
6. ALL METAL COMPONENTS ON EXTERIOR ARE TO BE PREFORMED AND PREFINISHED WHERE POSSIBLE.
7. ALL DOORS AND WINDOWS SHALL BE DARK BRONZE ANODIZED ALUMINUM WITH GLASS AS SELECTED BY OWNER AND ARCHITECT.
8. CAULK LINE AROUND WINDOWS AND DOORS SHALL BE 3/8" WIDE.
9. EXTERIOR WALL FINISH TO BE INSTALLED IN STRICT ACCORDANCE WITH MANUFACTURERS SPECIFICATIONS.
10. ALL EXTERIOR LIGHT FIXTURES SHALL BE PREFINISHED. REFER TO ELECTRICAL DRAWINGS.
11. ABBREVIATION "CJ" DENOTES CONTROL JOINT.
12. COORDINATE ALL EXTERIOR SIGNS, CANOPIES, AWNINGS AND "AMERICA'S DINER" PANELS WITH OWNER'S VENDOR.
13. DOORS AND WINDOWS ELEVATIONS AND DETAILS WILL BE PROVIDED ON A SEPARATE SHEET.



mrt design llc
architecture
interior design
facilities management

340 east palm lane
suite 304
phoenix, arizona
85004
p 602.667.9098
f 602.331.3558
www.mrtdesignllc.com

THIS DRAWING IS AN INSTRUMENT OF SERVICE AND THE PROPERTY OF MRT DESIGN, LLC AND SHALL REMAIN THEIR PROPERTY. THE USE OF THIS DRAWING SHALL BE RESTRICTED TO THE SITE FOR WHICH IT WAS PREPARED. AND PUBLICATION THEREOF IS EXPRESSLY LIMITED TO SUCH REISSUES. REPRODUCTION, OR PUBLICATION, BY ANY METHOD, IN WHOLE OR IN PART, IS PROHIBITED WITHOUT THE WRITTEN PERMISSION OF MRT DESIGN, LLC.

JOB NUMBER

22006

denny's restaurant #9633
mesa new build

4248 S SIGNAL BUTTE ROAD
MESA, ARIZONA 85212

PROJECT

SEP 12, 2022

CITY COMMENTS

REVISIONS

CITY COMMENTS

DRAWN BY
CHECKED BY

DATE ISSUED
SHEET DESCRIPTION



SHEET

A7.0