



Design Review Board



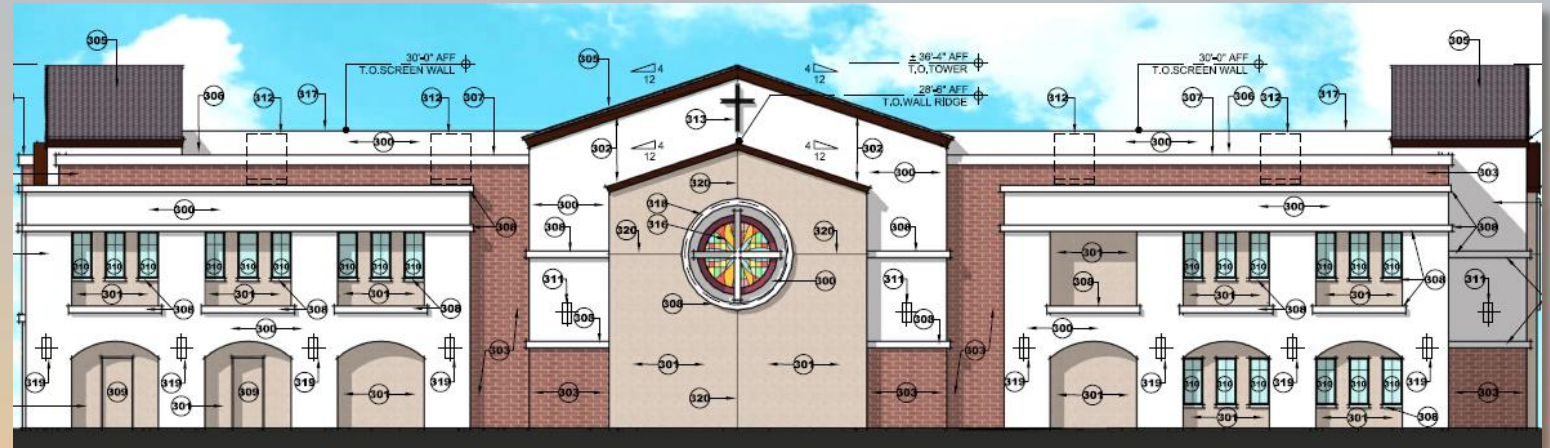
DRB23-00267

St. Timothy's Catholic School



Request

- Design Review
- To allow for a multi-purpose building to serve existing church and school





Location

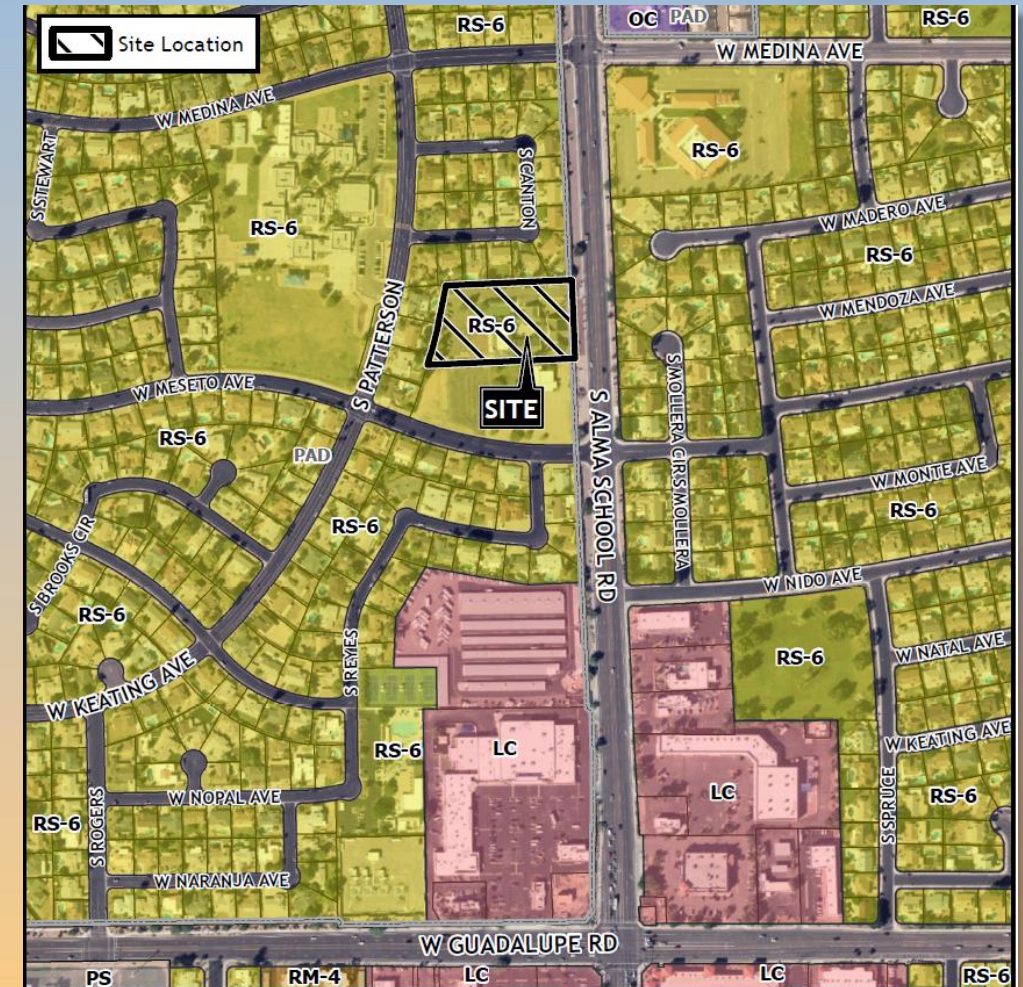
- West of Alma School Road
- North of Guadalupe Road





Zoning

- Single-Residence-6 with a Planned Development Overlay (RS-6 PAD)





Site Photos



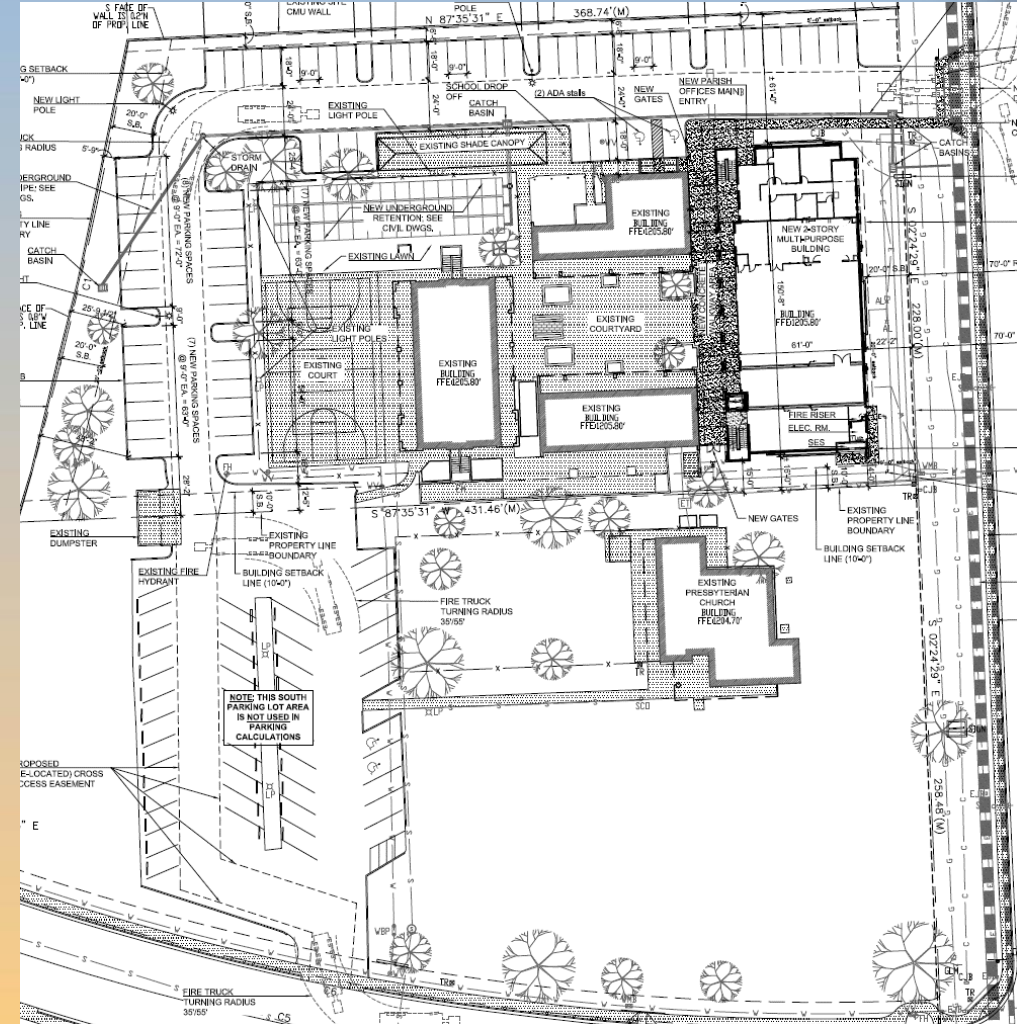
Looking west towards the site



Looking southwest towards the site













- 3 existing classroom buildings
- New 2-story, multi-purpose building including offices, warming kitchen, and cafeteria
 - Replacing existing chapel






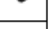
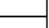












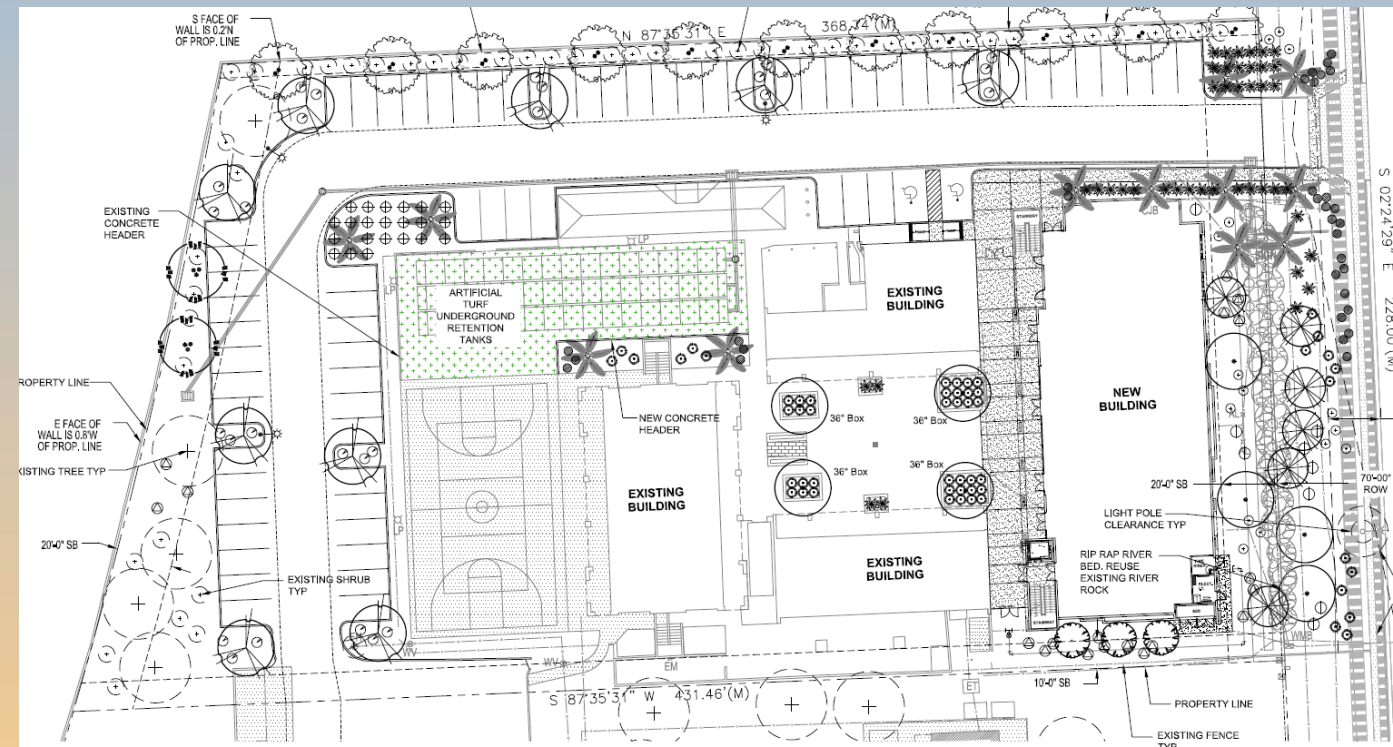


Landscape Plan

LANDSCAPE LEGEND:

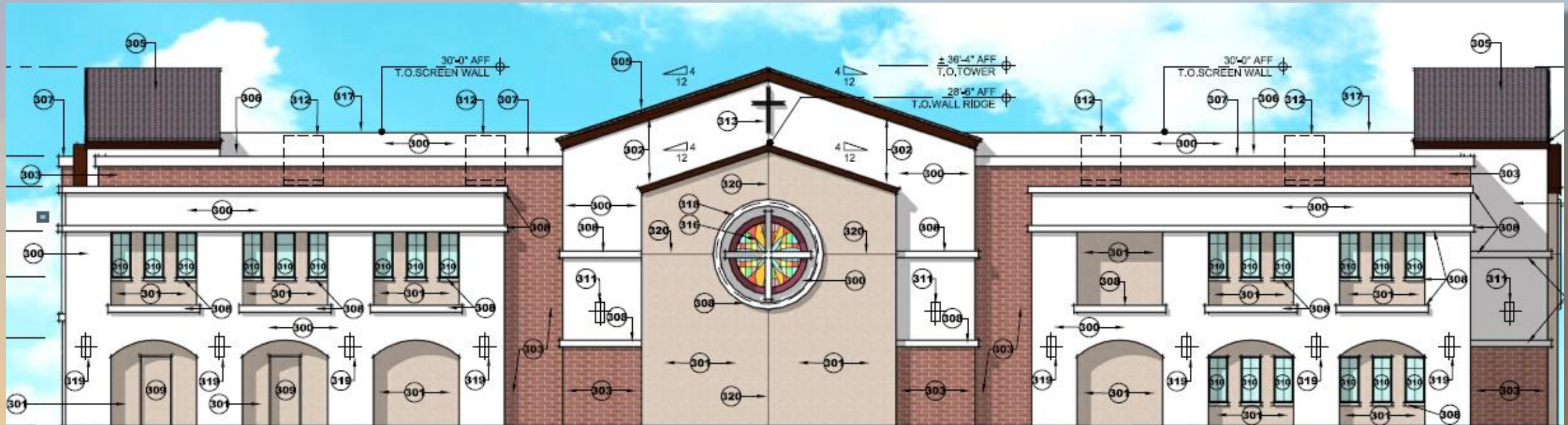
TREES / PALMS	SIZE:	QTY:
	Existing Sissoo to remain and be protected	36" Box Equivalent 05
	Sissoo Tree	15 Gallon 02
	Dalbergia sissoo	Standard
	Ebenopsis ebano	15 Gallon 03
	Texas Ebony	Standard
	Quercus virginiana	24" Box 09
	Southern Live Oak	Standard
	Acacia stenophylla	24" Box 11
	Shoestring Acacia	Standard
	Thevetia peruviana	24" Box 06
	Lucky Nut Tree (Yellow)	Multi Arm) 2 Arms min.
	Washingtonia hybrid	15' Clear Trunk Ht.
	Hybrid Fan Palm	Skinned, Matching 12 = 12 15 Gallon Trees
	Ulmus parvifolia	36" Box 08
	Evergreen Elm	High Breaker

SHRUB / ACCENTS	SIZE:	QTY:
	Eremophila maculata	5 Gal 27
	Valentine Bush	5 Gal 49
	Existing Shrub to remain and be protected	5 Gal 49
	Yucca pallida	5 Gal 38
	Pale Leaf Yucca	5 Gal 38
	Eremophila hygrophana	5 Gal 22
	Blue Bells	5 Gal 22
	Senna nemophila	5 Gal 19
	Desert Senna	5 Gal 19
	Muhlenbergia capillaris	5 Gal 54
	Regal Mist Grass	5 Gal 54
	Bougainvillea	5 Gal 15
	Torch Glow	5 Gal 15
	Caesalpinia mexicana	5 Gal 09
	Mexican Bird of Paradise	5 Gal 09
GROUNDCOVERS	SIZE:	QTY:
	Lantana montevidensis	5 Gal 32
	Gold Mound Lantana	5 Gal 32





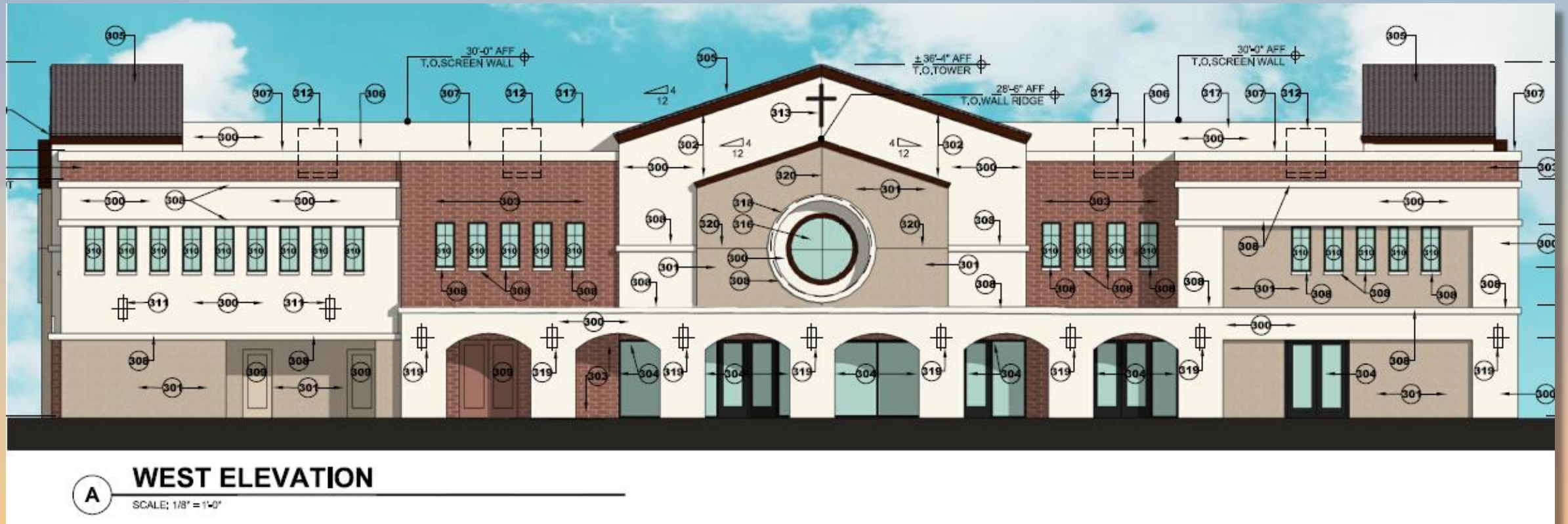
Elevations

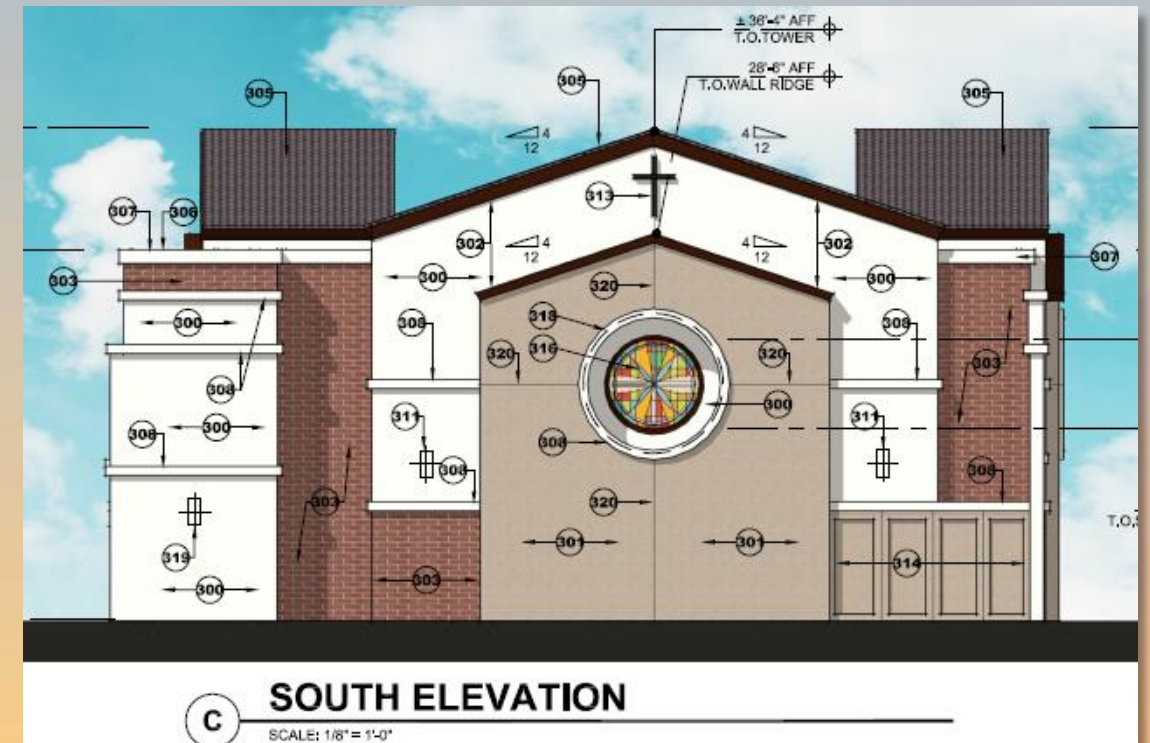


D EAST ELEVATION
SCALE: 1/8" = 1'-0"



Elevations







Findings

Staff is seeking your review and recommendation on the following:

- ✓ Proposed building elevations and landscape design

Staff welcomes any feedback



Design Review Board



General Plan

Neighborhood

- Safe places to live and enjoy surrounding community
- Associated non-residential uses including churches and schools





The map displays a grid of streets in a neighborhood. A large, irregularly shaped area is highlighted in light blue, indicating a specific zone or project area. Within this blue-shaded region, a smaller rectangular lot is outlined in red. The lot number 305-07-563B is visible within the red-outlined area. Other nearby lots are labeled with numbers such as 305-07-564A, 305-07-563A, 305-05-433, 305-05-425, 305-05-472, 305-05-905A, 302-87-565, 302-87-390, 302-87-392, 302-87-426, 302-87-428, 302-87-429, 302-87-430, 302-87-432, 302-87-433, 302-87-434, 302-87-809, and 302-87-566. Street names include W Lobo Ave, S Pennington Ave, W Madero Ave, W Mendoza Ave, W Meseto Ave, W Monte Ave, W Nido Ave, S Rogers, S Spence, S Mottera Cir, S Cantan, S Paterson, S Reyes, S Alamo Scholl Rd, and Emerson Cir. A small label at the bottom right reads "MERIT PARK 1 MCR: 238-27".