

**KEYNOTES ①**

1. 20ga G.I. PARAPET CAP (SEE DETAIL)
2. EIFS
3. EIFS CONTROL JOINTS (TYPICAL)
4. FIRE DEPARTMENT KNOX BOX
5. BUILDING SIGNAGE UNDER SEPARATE PERMIT. SIGN COMPANY TO ANCHOR SIGN TO STRUCTURAL WALL BEHIND METAL SIDING
6. ELECTRICAL PANEL AND SES IN ELECTRICAL CLOSET
7. SLIDER WINDOW W/ DOUBLE INSULATED GLASS IN ALUMINUM FRAME (SEE FLOOR PLAN)
8. INSULATED HM DOOR & FRAME
9. ROOF OVERFLOW AND DRAIN LEADER - PROVIDE LAMBS TONGUE AT EXIT POINT (PAINT TO MATCH ADJACENT SURFACE)
10. FIRE DEPARTMENT SIGNAGE
11. STAINLESS STEEL SERVICE COUNTER
12. PRE-CAST CONCRETE WAINSCOT
13. HOSE BIB
14. RESTROOM SIGNAGE (UNDER SEPARATE PERMIT)
15. WALL MOUNTED LIGHT FIXTURE. PAINT TO MATCH ADJACENT WALL
16. 8X8X16 SMOOTH FACED CMU (SEALED)
17. 4"X12" STEEL CHANNEL FASCIA (SEE STRUCTURAL)
18. 6"X6" STEEL COLUMN (SEE STRUCTURAL)
19. 12" HIGH PAINTED METAL SIDING
20. ROOF MOUNTED MECHANICAL UNIT BEHIND PARAPET
21. BOLLARD (SEE SITE DETAILS)
22. STANDING SEAM METAL ROOF

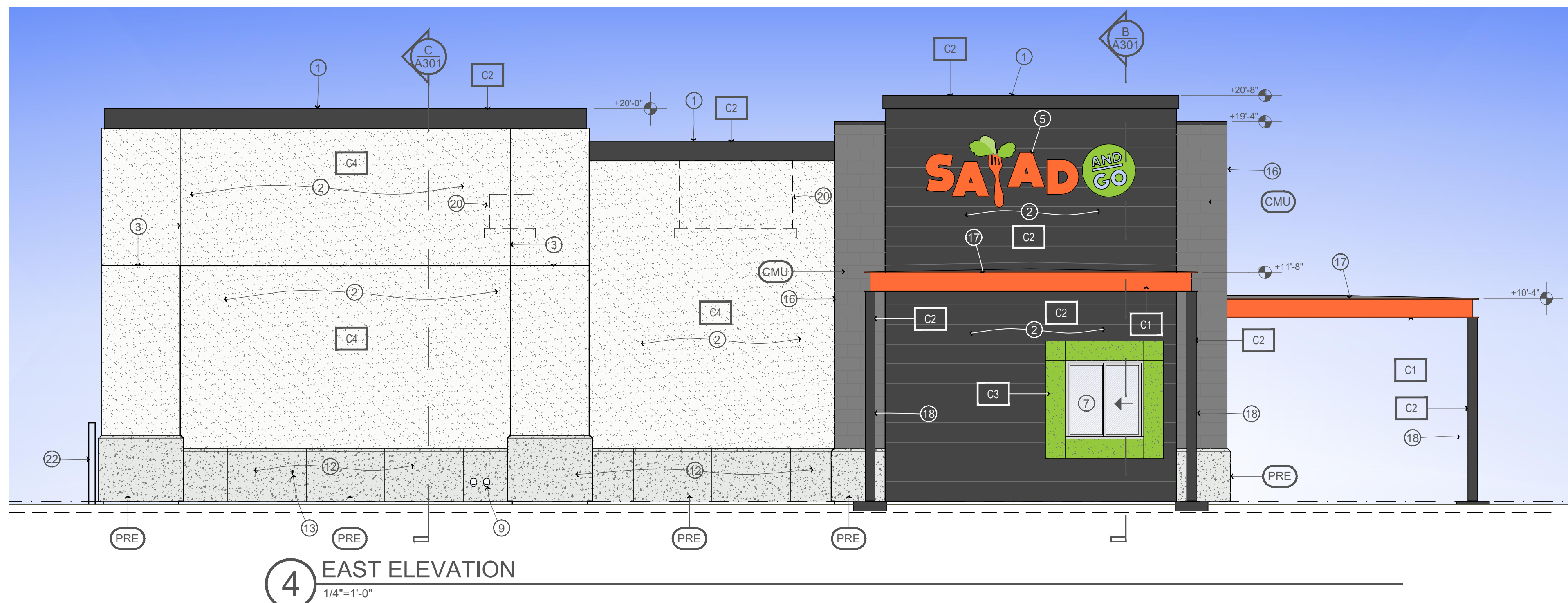
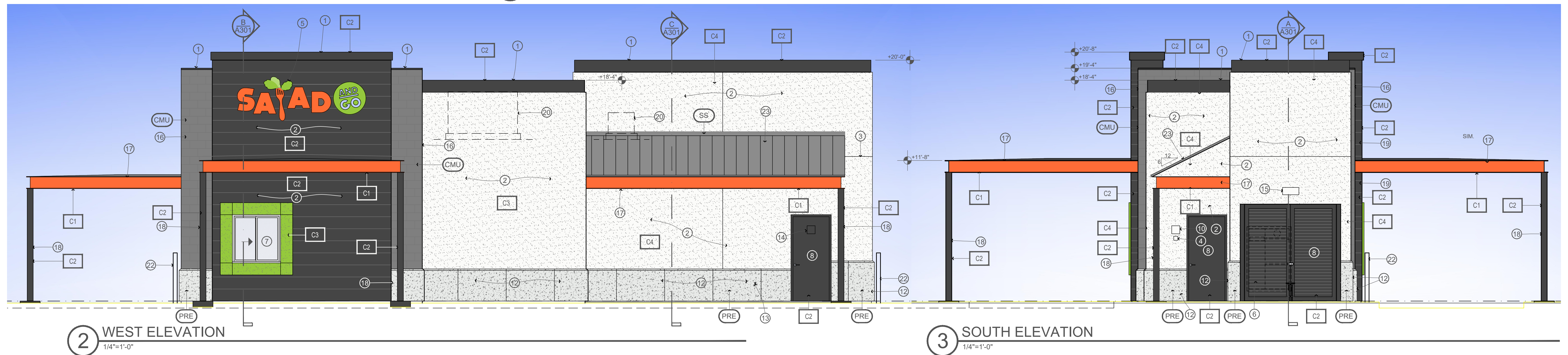
**COLOR SCHEDULE**

- C1 DUNN EDWARDS "EXUBERANT ORANGE" #DEA112
- C2 DUNN EDWARDS "SHEET METAL GRAY" #DE6356
- C3 BEHR "FRESH APPLE GREEN" #P360-6
- C4 BEHR "CRYSTAL CUT" #PR-W13
- PRE PRECAST CONCRETE WAINSCOT: CDI INC. "GRAY" With 2" bevel at top.
- CMU SMOOTH FACE CMU "HUNTINGTON GREY" NOTE: Only required at exposed areas. All other areas to be standard grey cmu.
- SS STANDING SEAM METAL ROOF: METAL SALES "OLD TOWN GREY" W25

**COLOR NOTES:**  
SEALANTS TO MATCH ADJACENT MATERIAL COLORS. WHITE OR OFF WHITE SEALANTS ARE NOT ALLOWED  
PAINTER SHALL PROVIDE (2) COATS OF SEALER TO ALL NATURAL BLOCK, PRECAST CONCRETE ITEMS, CONCRETE AND NON-PAINTED SURFACES AND MATERIALS FOR A WEATHER SEALED PROJECT

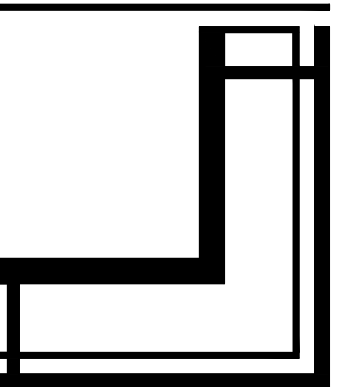
**GENERAL NOTES**

1. PAINT ALL EXPOSED FOUNDATIONS BELOW WALL FINISH/DRIP SAME COLOR AS WALL ABOVE.
2. PRIOR TO PURCHASING MATERIALS, CONTRACTOR SHALL PROVIDE SAMPLES OF ALL MATERIALS, COLORS FOR REVIEW AND APPROVAL BY ARCHITECT AND OWNER.
3. ALL SAMPLES SHALL BE SUBMITTED FOR REVIEW AS A COMPLETE SUBMITTAL, AT ONE TIME. MATERIAL SAMPLES SHALL BE LARGE ENOUGH TO DEPICT THE FINISH, TEXTURE OF 12" SQUARE OR AS APPROPRIATE.



**COLOR MATERIAL CALC.**

FINISHES	N. ELEV.	W. ELEV.	S. ELEV.	E. ELEV.
C1	15 (3.5%)	50 (4.3%)	37 (8.7%)	29 (2.4%)
C2	120 (28.5%)	306 (25.6%)	147 (34.7%)	308 (25.8%)
C3	-	20 (1.7%)	-	20 (1.7%)
C4	-	467 (40.5%)	195 (46%)	583 (48.9%)
PRE	47 (11.5%)	104 (9.0%)	18 (4.2%)	118 (9.9%)
CMU	208 (49.0%)	76 (6.5%)	27 (6.4%)	75 (6.3%)
SS	-	71 (6.2%)	-	-
WINDOWS	32 (7.5%)	60 (5.0%)	-	20 (5.0%)
<b>TOTAL</b>	<b>422 SF</b>	<b>1153 SF</b>	<b>424 SF</b>	<b>1153 SF</b>

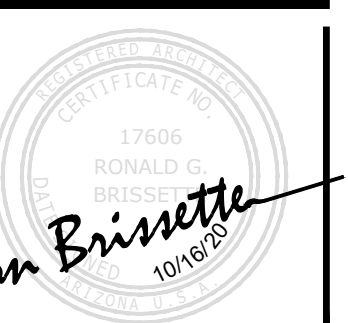


**BRISSETTE ARCHITECTS**

10229 N. SCOTTSDALE RD. STE. F  
SCOTTSDALE, ARIZONA 85253  
OFFICE@BRISSETTEARCHITECTS.COM  
T: (480) 596-3882  
WWW.BRISSETTEARCHITECTS.COM

© BRISSETTE ARCHITECTS, INC. 2020.  
ALL RIGHTS RESERVED TO REPRODUCTION IN ANY FORMAT OR MEDIA.

SOUTH CRIMSON ROAD AND EAST SOUTHERN AVENUE MESA, AZ 85208



DATE: 10/16/20  
DRAWN: jk  
REVISIONS

EXTERIOR ELEVATIONS  
SCALE: 1/4"=1'-0"

A-201