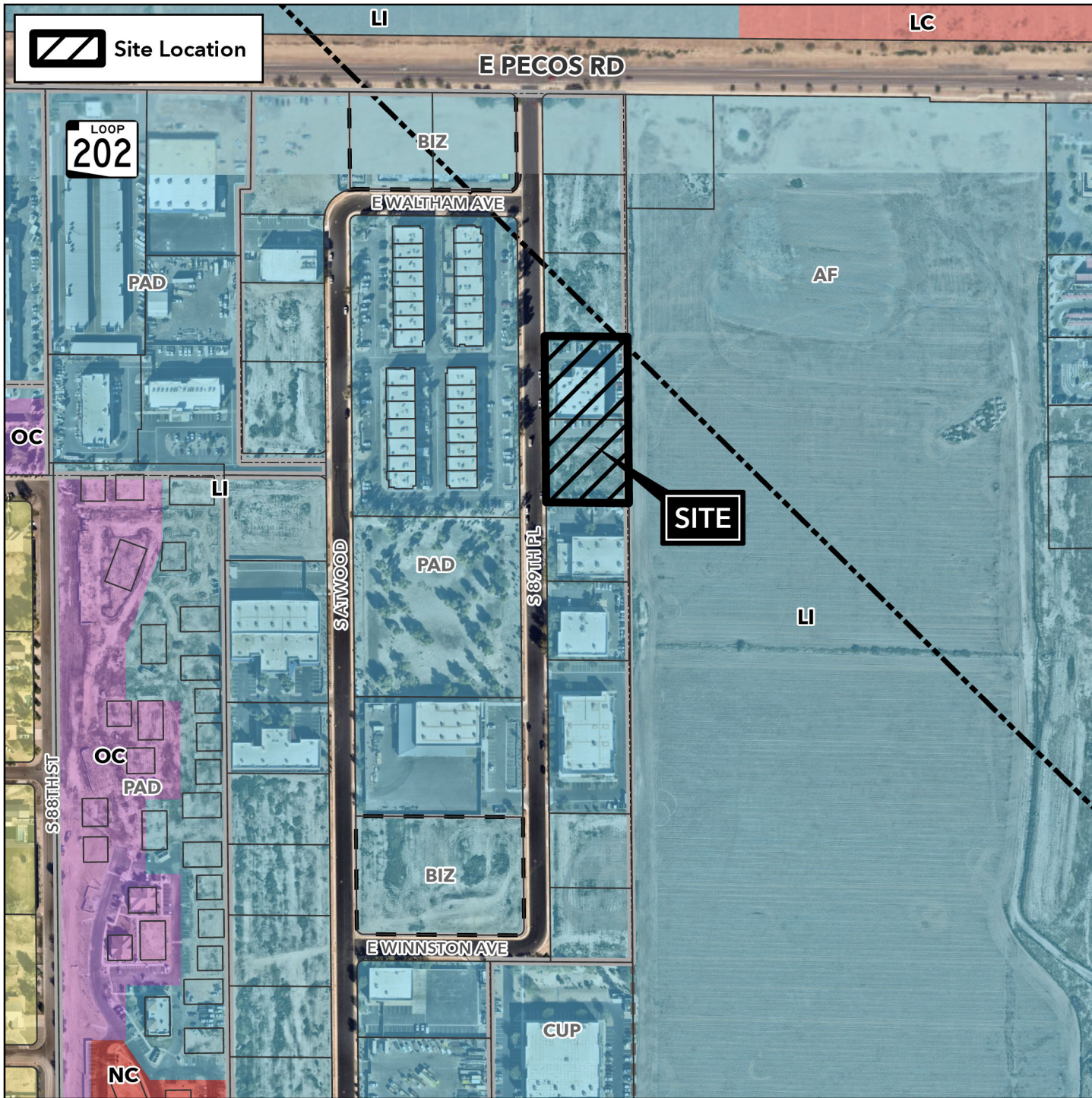


# Design Review Vicinity Map: DRB26-00045

# Case Details

 Site Location



**Case:**  
DRB26-00045

**Site / Address:**  
(District 6) 1.7± acres located at 7307 South 89th Place.

**Request:**  
Site Plan Modification and Design Review approval to allow for an approximately 4,920 square foot office and warehouse addition.

