



CLC ASSOCIATES, INC.
WWW.CLCASSOC.COM

**MOUNTAIN VISTA MARKETPLACE
LEGAL DESCRIPTION
TEMPORARY DRAINAGE EASEMENT #4
EXHIBIT "A"**

A parcel of land located within the Northeast Quarter of Section 35, Township 1 North, Range 7 East, Maricopa County, Arizona, being described as follows:

Commencing at a Maricopa County brass cap in hand hole found and accepted as the monument for the North Quarter Corner of said Section 35, from which a Maricopa County brass cap in hand hole found and accepted as the monument for the Northeast Corner of said section bears North 89 degrees 51 minutes 47 seconds East a distance of 2,650.99 feet, being the **Basis of Bearing** hereon;

Thence departing said north line and along the west line of said Northeast quarter, South 00 degrees 10 minutes 18 seconds East a distance of 1,035.55 feet, to a point on the southerly right of way line of East Hampton Avenue;

Thence departing said west line and along said southerly right of way line North 89 degrees 50 minutes 09 seconds East a distance of 35.70 feet to the **Point of Beginning**;

Thence continuing along said southerly right of way, North 89 degrees 50 minutes 09 seconds East a distance of 45.88 feet;

Thence departing said southerly right of way, South 07 degrees 38 minutes 24 seconds East a distance of 71.05 feet;

Thence South 46 degrees 43 minutes 54 seconds East a distance of 54.69 feet;

Thence South 74 degrees 43 minutes 24 seconds East a distance of 32.87 feet;

Thence North 00 degrees 09 minutes 53 seconds West a distance of 115.47 feet;

Thence North 89 degrees 50 minutes 07 seconds East a distance of 119.45 feet to a tangent curve concave southwesterly having a radius of 745.00 feet;

Thence southeasterly along said curve through a central angle of 12 degrees 00 minutes 01 seconds an arc length of 156.04 feet;

Thence South 78 degrees 09 minutes 53 seconds East a distance of 69.29 feet;

Thence South 00 degrees 09 minutes 53 seconds East a distance of 218.75 feet;

Thence South 89 degrees 50 minutes 07 seconds West a distance of 342.12 feet;

Thence North 00 degrees 09 minutes 53 seconds West a distance of 82.40 feet;

Thence North 77 degrees 10 minutes 51 seconds West a distance of 62.46 feet;

Thence North 41 degrees 19 minutes 52 seconds West a distance of 78.56 feet;

Thence North 08 degrees 30 minutes 09 seconds West a distance of 96.20 feet to the **Point of Beginning**.

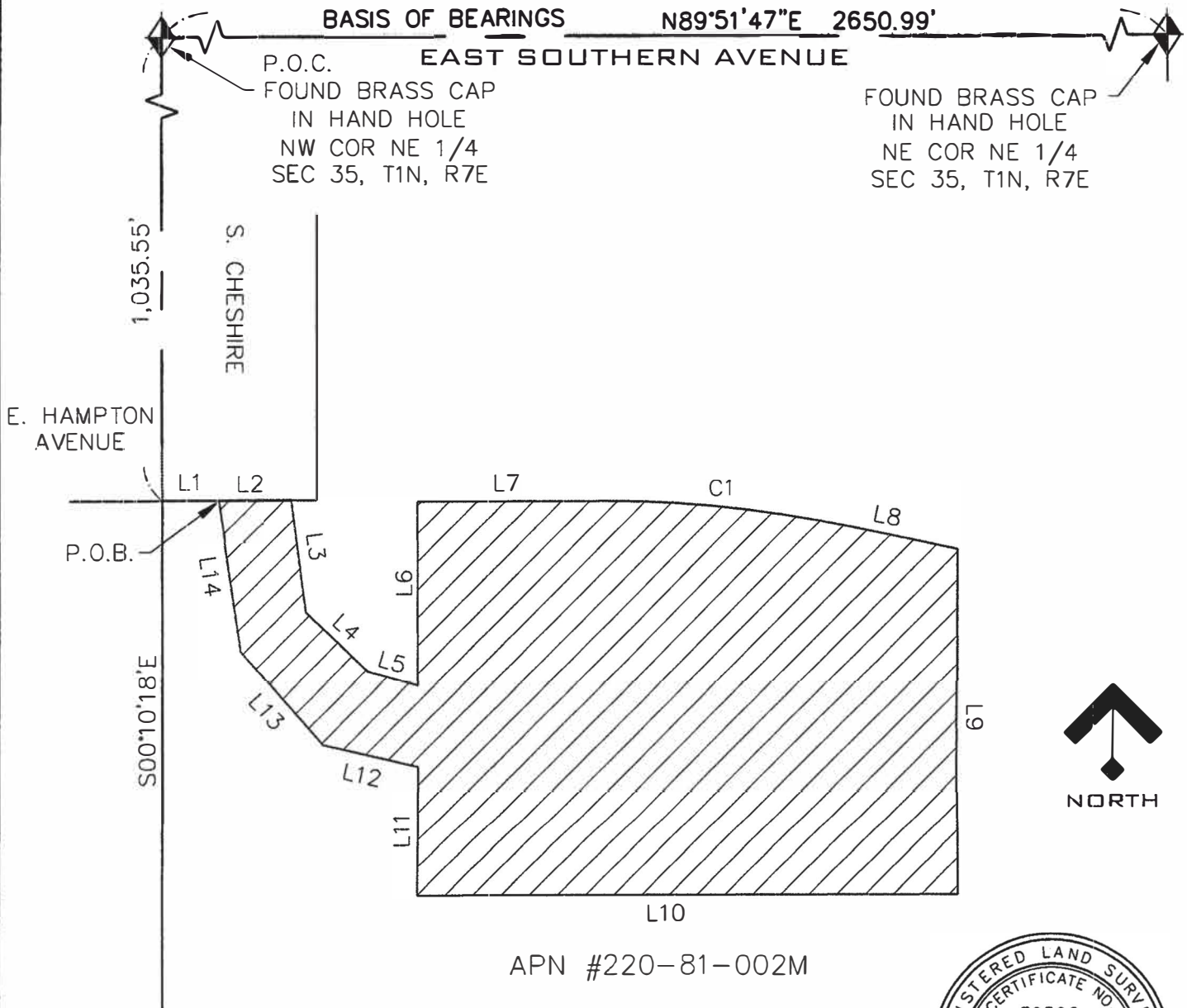
The above described parcel contains a computed area of 92,410 square feet (2.121 acres), more or less and is subject to any easements, restrictions, or rights of way of record or otherwise.

Prepared by:

Randy J. Sorenson, R.L.S. #39596
For and On Behalf Of
CLC Associates, Inc.
7025 N. Scottsdale Road
Suite 320
Scottsdale, AZ. 85253
(480) 994-5610
August 13, 2007



EXHIBIT "A" TEMPORARY DRAINAGE EASEMENT #4



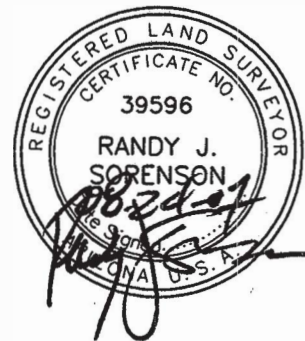
THIS EXHIBIT DOES NOT REPRESENT A MONUMENTED SURVEY.
IT IS INTENDED ONLY TO DEPICT THE ATTACHED DESCRIPTION. PARCEL CONTAINS 92,410 SQ. FT.

CITY OF MESA, ARIZONA			A TEMPORARY DRAINAGE EASEMENT #4 WITHIN THE NORTHEAST QUARTER OF SECTION 35, T1N, R7E, GILA & SALT RIVER MERIDIAN, MARICOPA COUNTY, ARIZONA.
DRAWN BY: FWM	SCALE: 1"=100'	SHEET 1 OF 2	
CHECKED BY: RJS	DATE: 08/24/07	JOB NUMBER: 05.0137	

EXHIBIT "A"
TEMPORARY DRAINAGE
EASEMENT #4

LINE TABLE		
LINE	LENGTH	BEARING
L1	35.70	N89°50'09"E
L2	45.88	N89°50'09"E
L3	71.05	S07°38'24"E
L4	54.69	S46°43'54"E
L5	32.87	S74°43'24"E
L6	115.47	N00°09'53"W
L7	119.45	N89°50'07"E
L8	69.29	S78°09'53"E
L9	218.75	S00°09'53"E
L10	342.12	S89°50'07"W
L11	82.40	N00°09'53"W
L12	62.46	N77°10'51"W
L13	78.56	N41°19'52"W
L14	96.20	N08°30'09"W

CURVE TABLE			
CURVE	LENGTH	RADIUS	DELTA
C1	156.04	745.00	12°00'01"



THIS EXHIBIT DOES NOT REPRESENT A MONUMENTED SURVEY.
 IT IS INTENDED ONLY TO DEPICT THE ATTACHED DESCRIPTION.

CITY OF MESA, ARIZONA			A TEMPORARY DRAINAGE EASEMENT #4 WITHIN THE NORTHEAST QUARTER OF SECTION 35, T1N, R7E, GILA & SALT RIVER MERIDIAN, MARICOPA COUNTY, ARIZONA.
DRAWN BY:	SCALE:	SHEET 2 OF 2	
FWM	1"=100'		
CHECKED BY:	DATE:	JOB NUMBER:	
RJS	08/24/07	05.0137	