



# City of Mesa Transportation Safety

An Overview of Mesa's Approach to Crash Analysis



May 15, 2023  
Sustainability &  
Transportation Committee

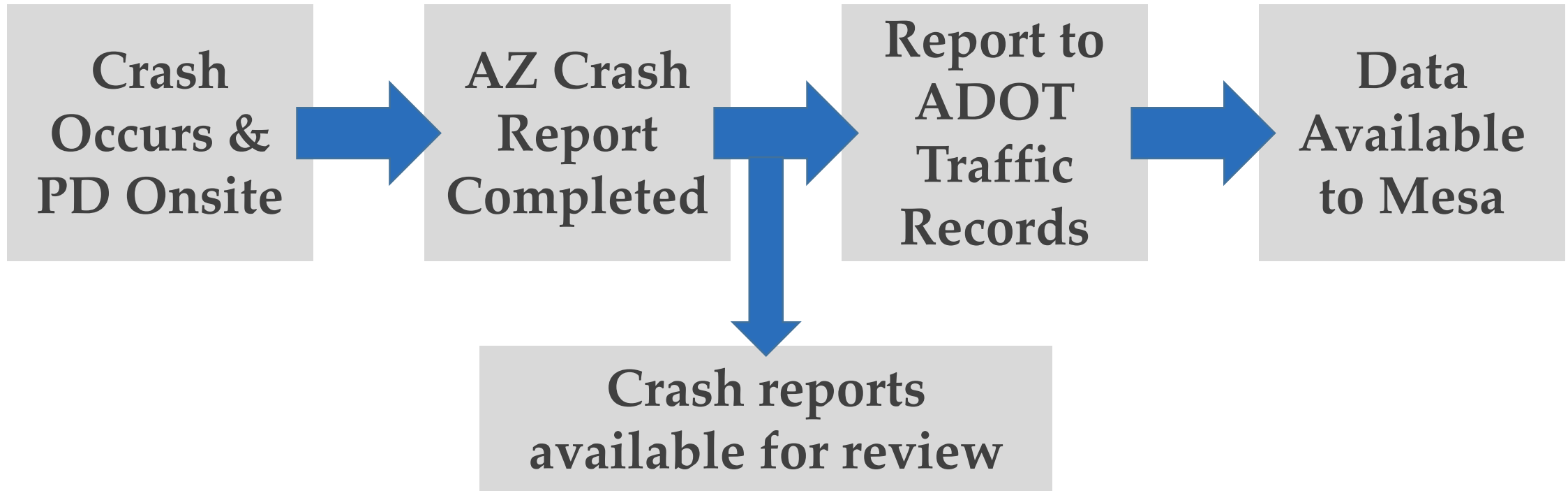
# Overview

- Background on Crash Data
- Statistics & Trends
  - National, Regional and Local
- How the Crash Analysis is Used
- Coordination Meetings
- Safety Projects



# Mesa's Crash Data

## Background on Crash Data



# Background on Crash Data

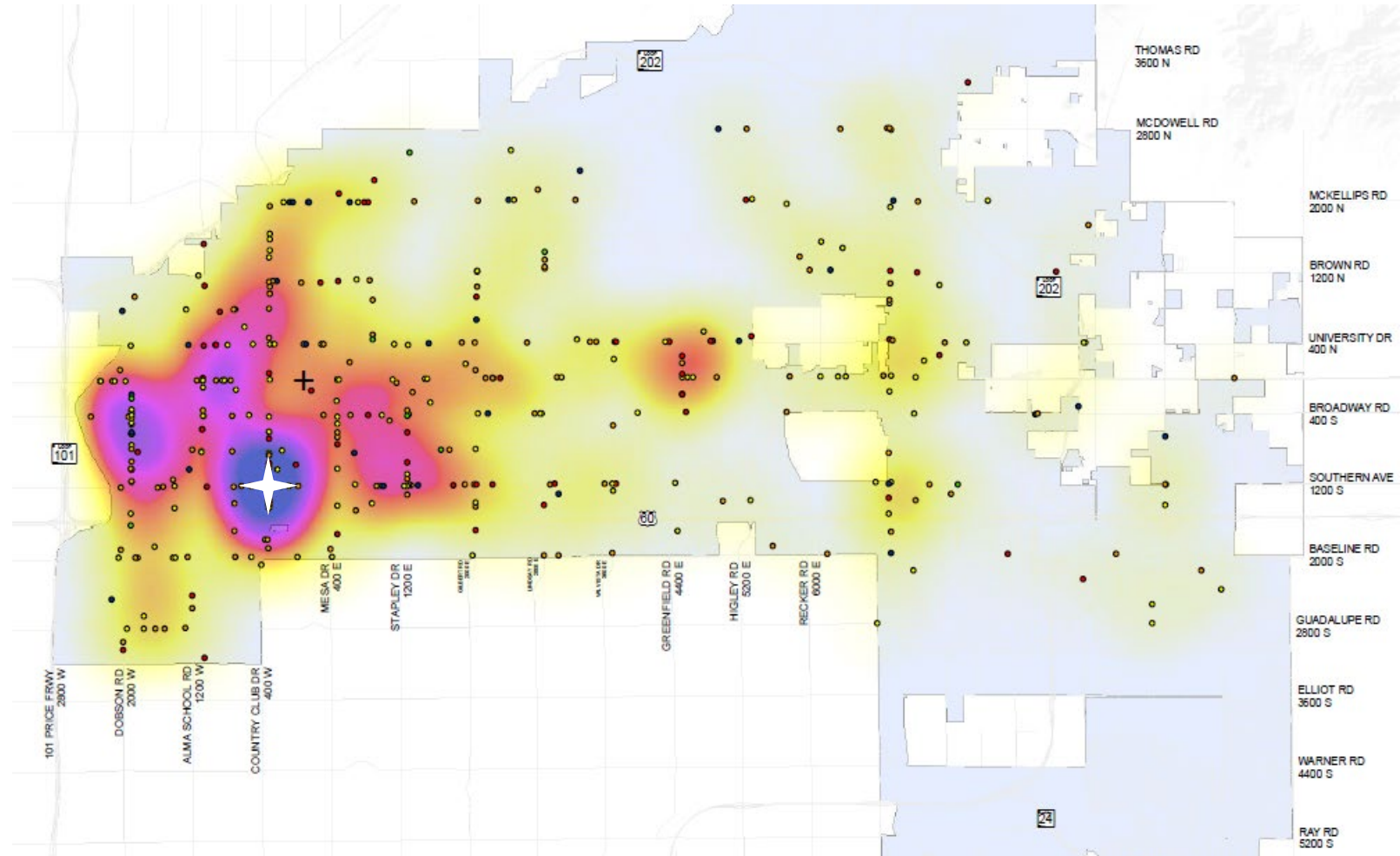
## Past Study Types

### Historical Trends – 5 Years

- Compiled data from annual reports
- Top Crash Intersections

### Locational

- Study requests
- Safety reviews
- Part of design



# Statistics & Trends - National

## 2022 Fatal Crash Takeaways (NHTSA, 2022)

- Early estimates show **42,795 people died** in motor vehicle crashes.
  - 0.3% decrease from 2021
  - 2021 Largest number of fatalities since 2005
- Fatality rate per vehicle miles travelled (VMT) in 2022 **decreased** by 1.1%.
- Main behaviors leading to fatal crashes includes **impaired driving, speeding, and failure to wear a seatbelt.**



# 6 Statistics & Trends - State & Regional

## Arizona Department of Transportation (ADOT) 2022 Crash Estimates

- 11.1% **increase** in motor vehicle fatalities from 2021
- Increased fatalities observed for **pedestrians, bicyclists & lane departures**

## Maricopa Association of Governments (MAG)

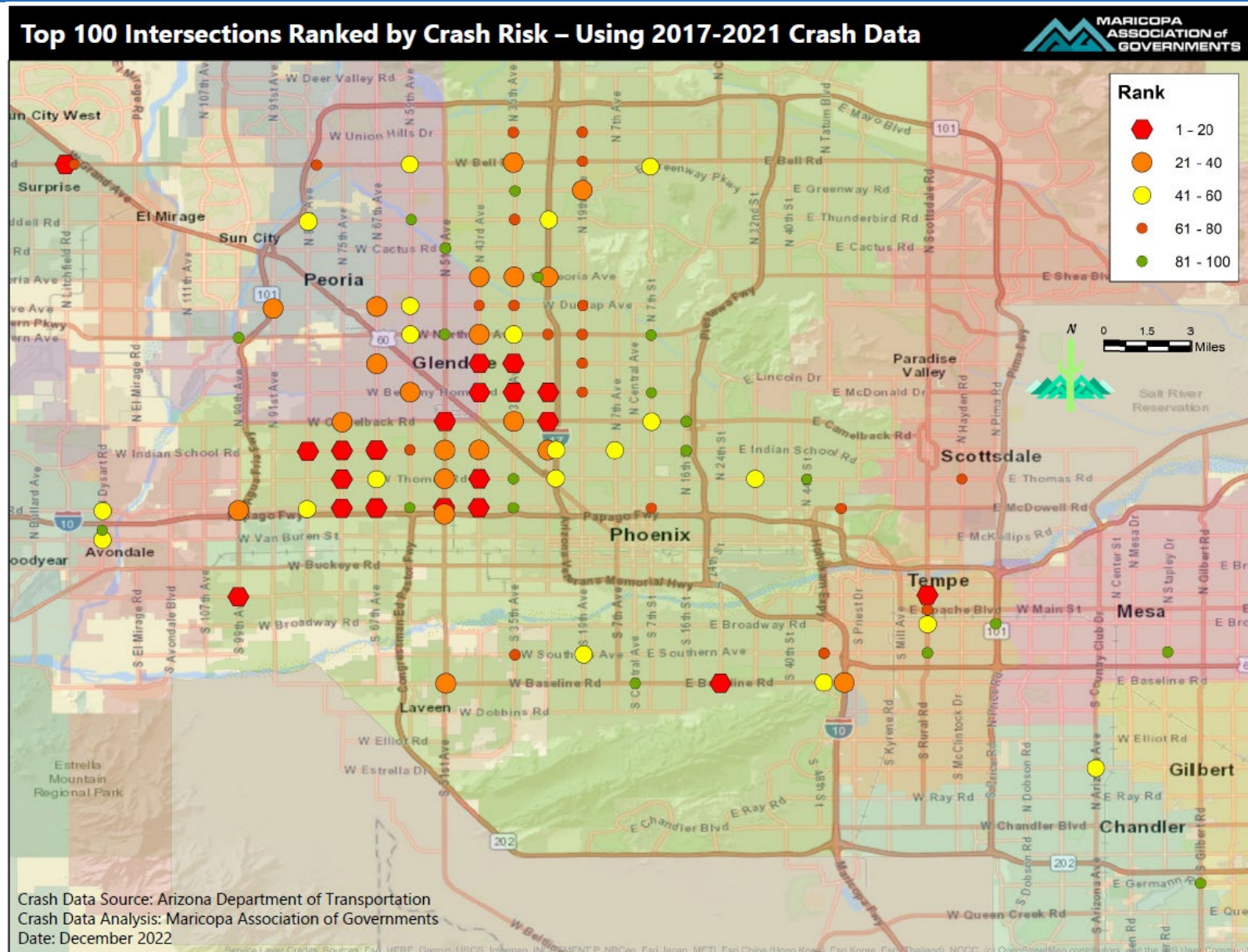
- Increase in **fatal crashes on arterial & local roads**
- Continued increase in **fatal & injury pedestrian crashes**



# Using Trends to Identify Needs

## Regional

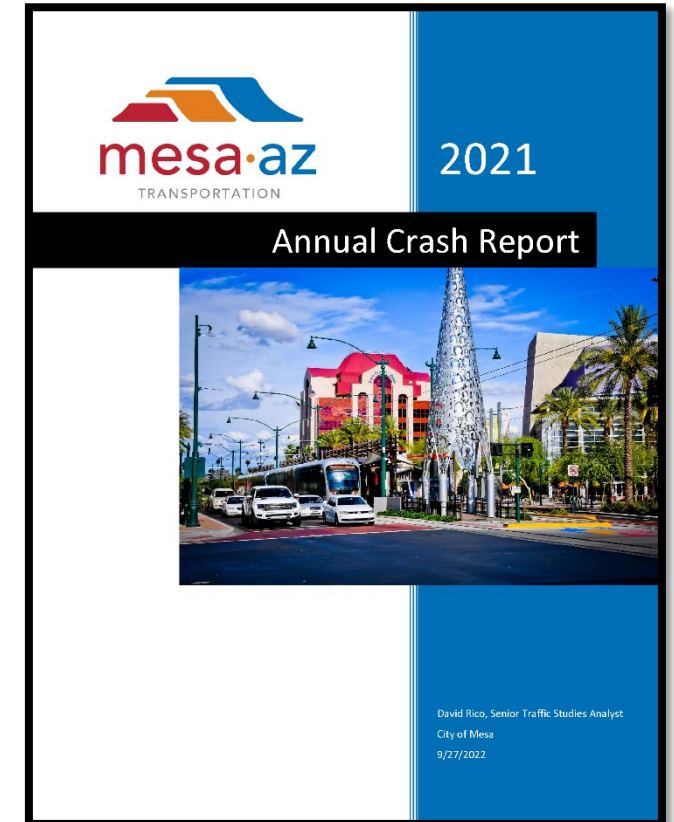
- MAG Top 100 Intersections Ranked by Crash Risk



# Statistics & Trends - Mesa

## City of Mesa

- Total crashes **increased (+2.4%)**
- 44 fatalities in Mesa in 2022
- Pedestrians **27%** of crash fatalities
- Motorcycles **30%** of crash fatalities
- Predominant cited violations – **failure to yield, failed to keep in lane & disregarded signal**
- Impairment – **40%** drugs or alcohol involved



\* Annual Report - Detailed statistics for **fatal, serious injury, bike, and pedestrian crashes**



# Statistics & Trends

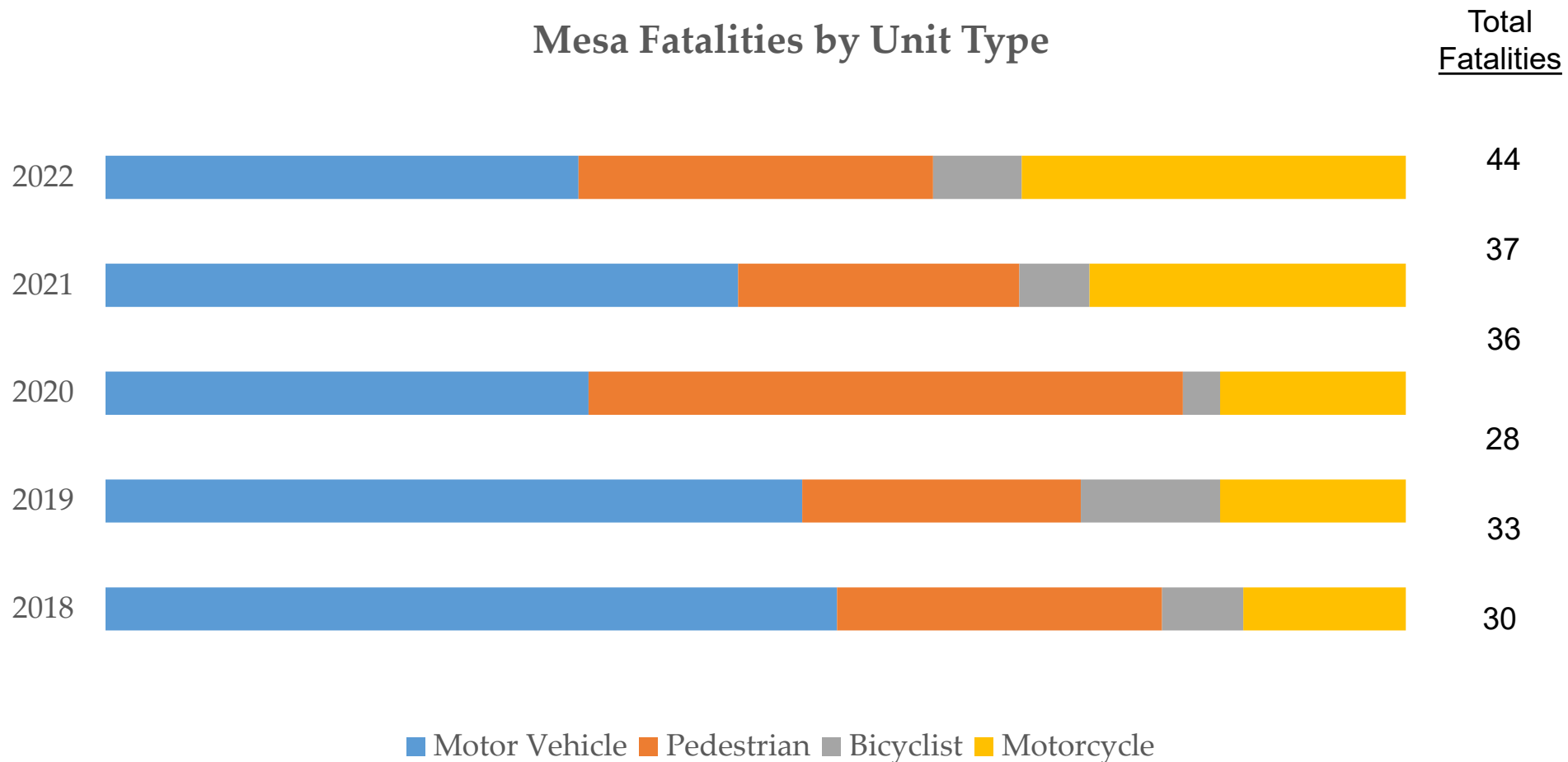
## Fatalities

- 10-Year Mesa & National



# Statistics & Trends

## Fatalities

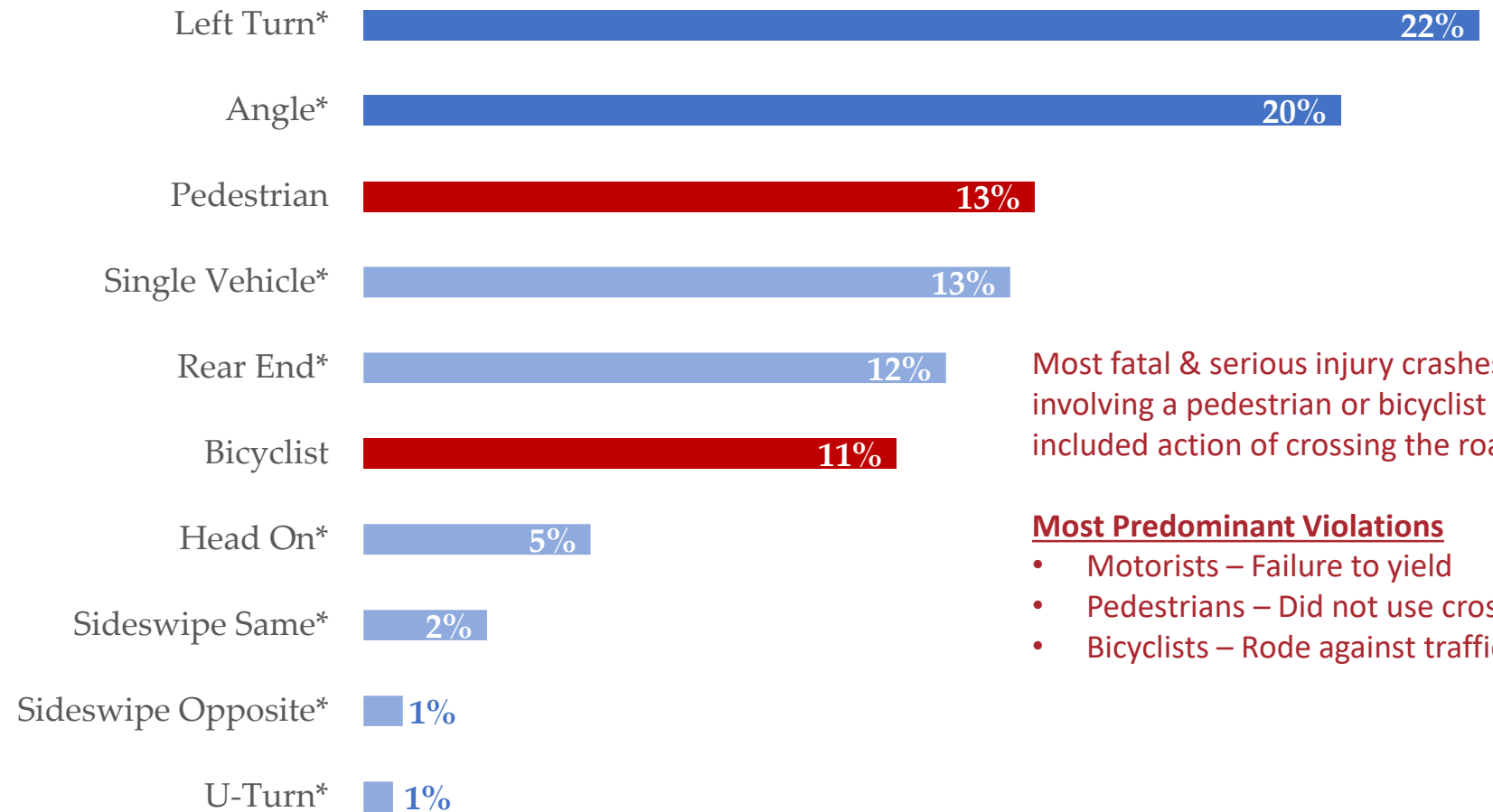


# Statistics & Trends

## Fatal & SI Crashes

- Manners

### Crash Manners 2017 to 2021 Fatal & SI Crashes in Mesa



Most fatal & serious injury crashes involving a pedestrian or bicyclist included action of crossing the road.

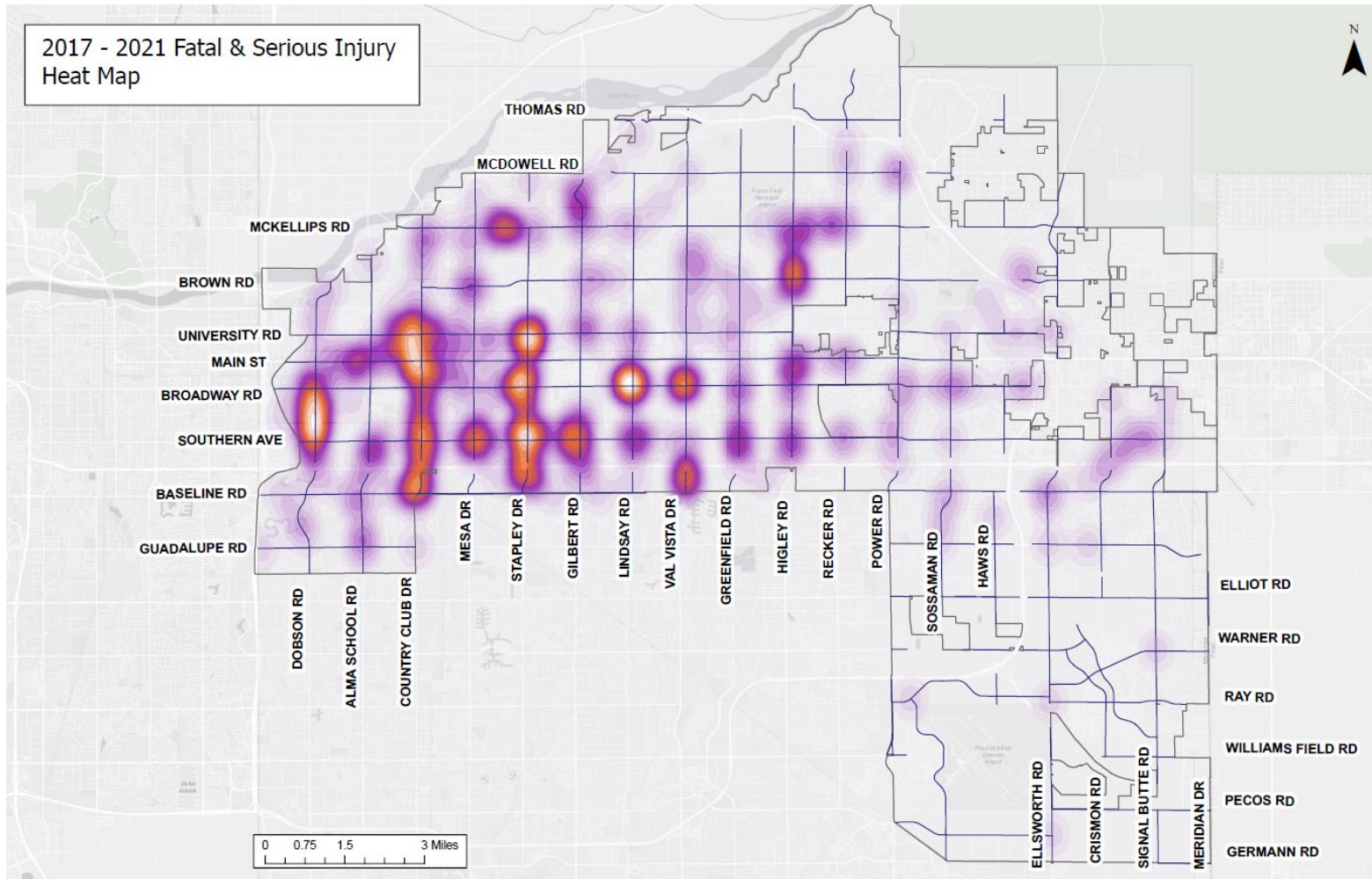
#### Most Predominant Violations

- Motorists – Failure to yield
- Pedestrians – Did not use crosswalk
- Bicyclists – Rode against traffic

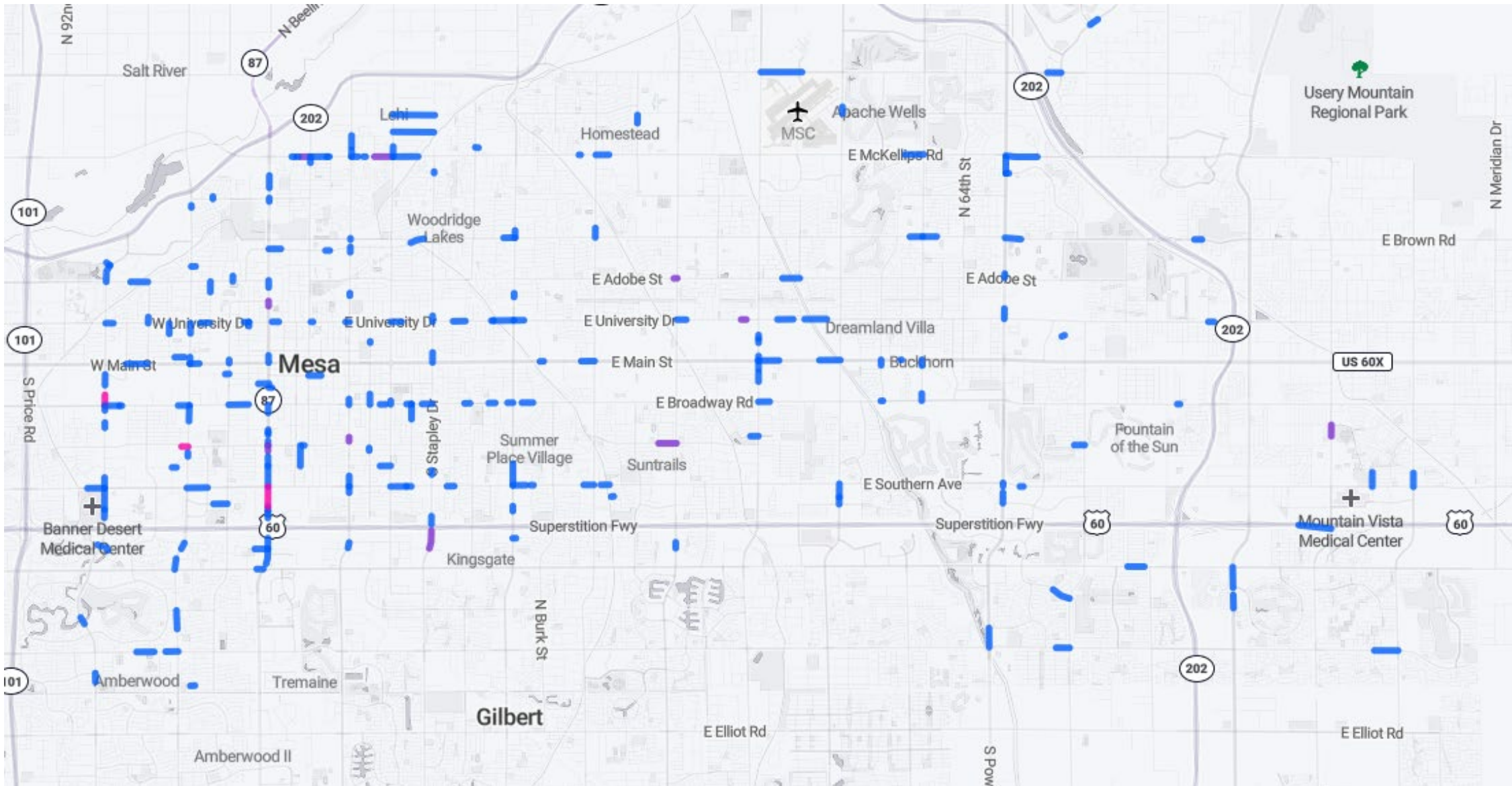
\*Motor vehicle crashes not involving bike or pedestrian

# How Crash Analysis is Used

- Dashboard/GIS
  - Cross reference crash data with demographic, land use and enforcement data sets
  - Study system, corridor or intersection level
  - Analyze specific types of crashes
- Network Screening Database
  - Predictive crash analysis
  - Identifies intersections with highest potential for safety improvements
  - Helps prioritize projects



# How Crash Analysis is Used



# Coordination Meetings - Mesa

Stakeholder meetings between **Mesa Police, Transportation, Fire & Medical, and Communications.**

## Bi-Weekly Meeting Priorities:

- Data driven methods for reducing serious injury and fatal crashes
  - Allocate appropriate resources
- Safety campaigns for vulnerable road users
- Targeted enforcement using historical trends
- Increase in communication

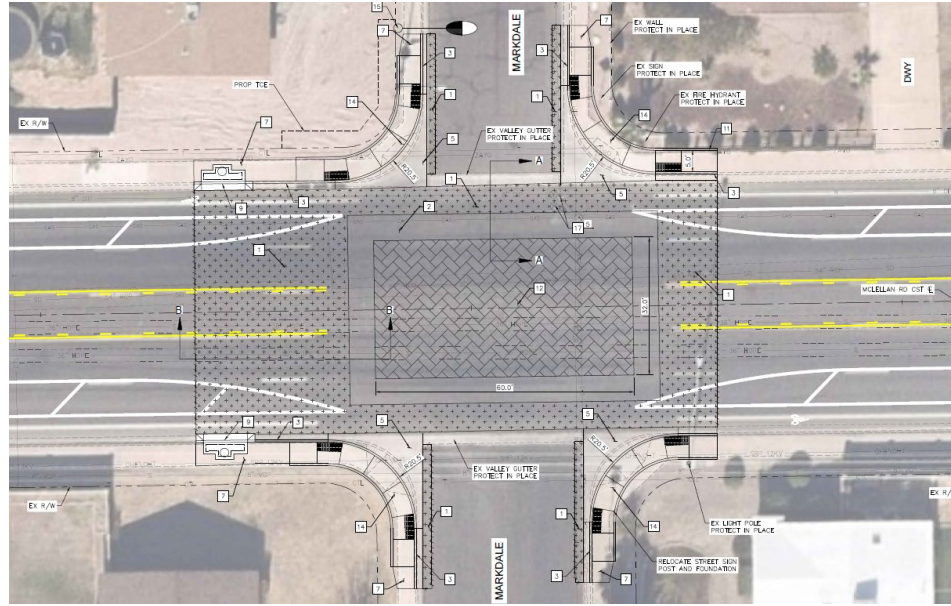
## 2023 Goals:

- Reduce fatalities by 30%
- Safety campaign across all platforms



# Using Trends to Identify Needs

**\$1.0 M**  
**Annually in**  
**Photo Safety**  
**Enforcement**  
**Funds**



# Questions & Discussion







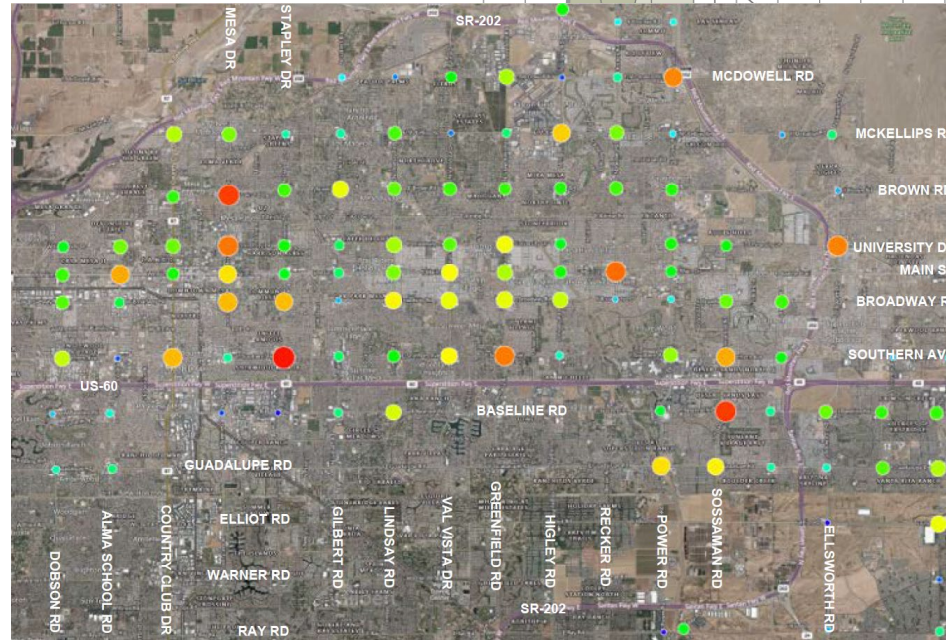
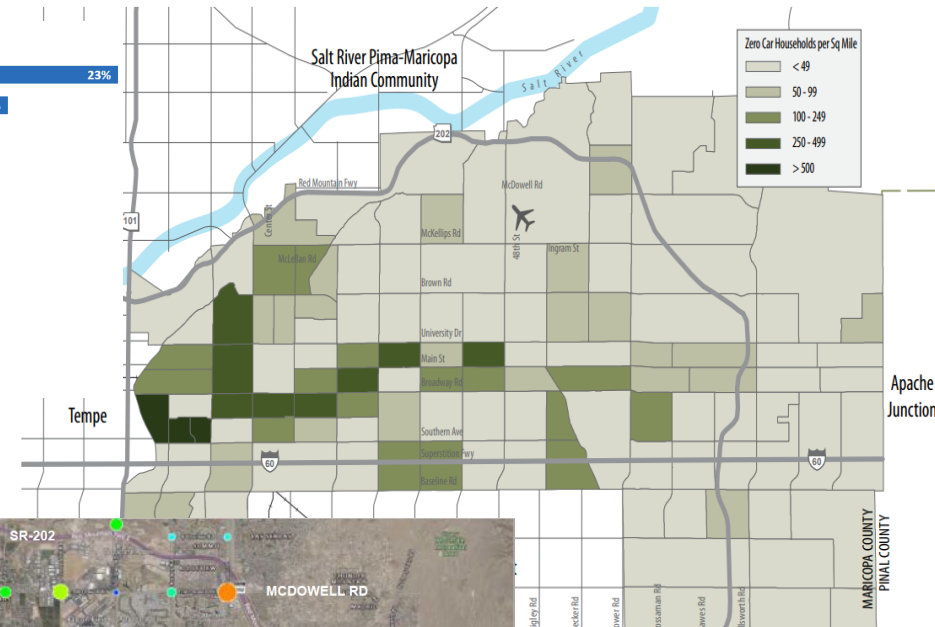
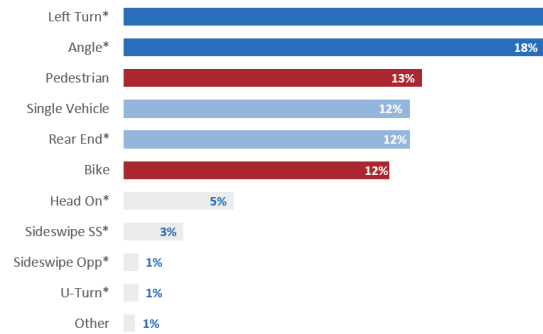
mesa·az

# How Crash Analysis is Used

## Specific Trends

- Working to create more useful platforms that can assist in identifying trends and where to focus specific improvements, whether at **intersections, roadway segments, or systemically**
- The intersection of multiple data sets

Crash Manners - 2017 to 2020 Fatal & SI Crashes in Mesa



# How Crash Analysis is Used

