



Design Review Board



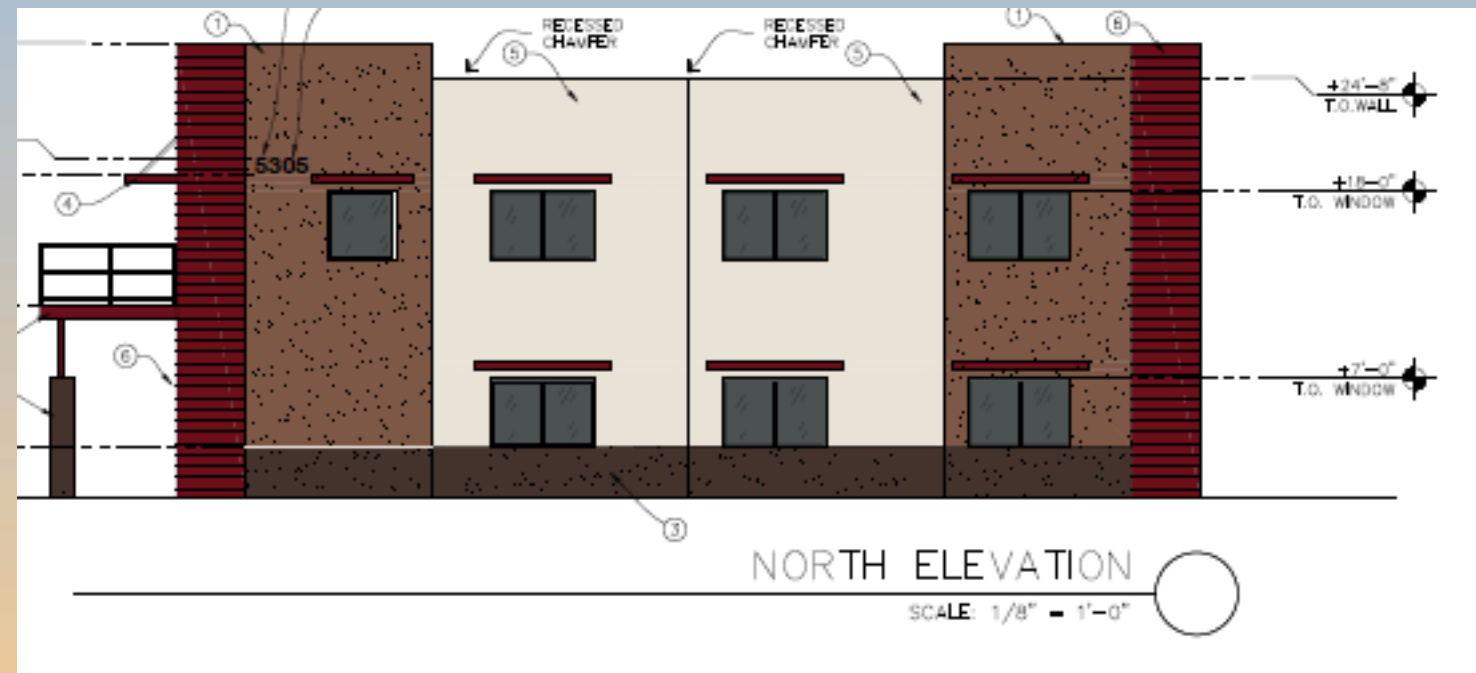
DRB22-00614

Outlaw Trucking



Request

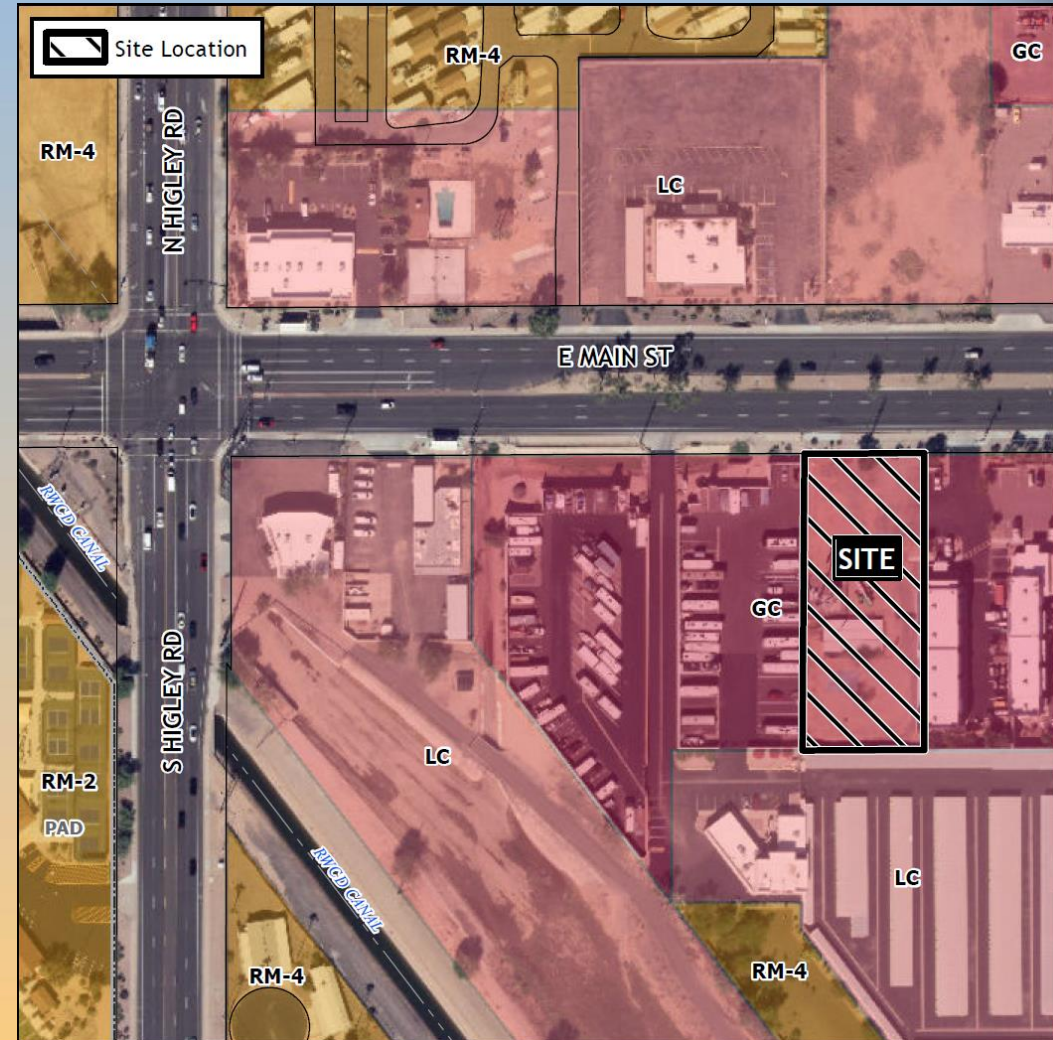
- Design Review
- To allow a general retail store





Location

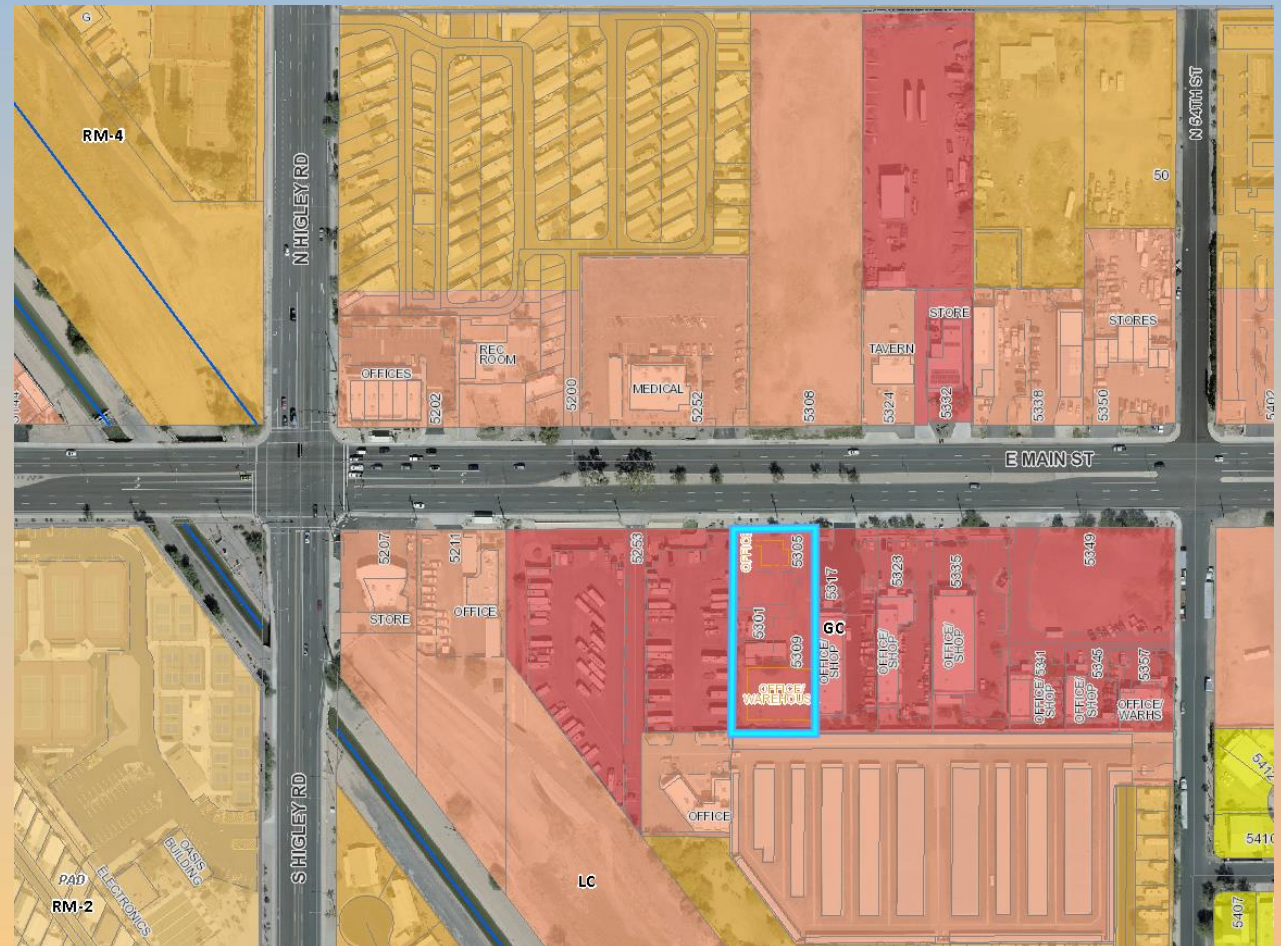
- East of Higley Road
- South of Main Street





Zoning

- General Commercial
- Proposed use is allowed by right





Site Photo

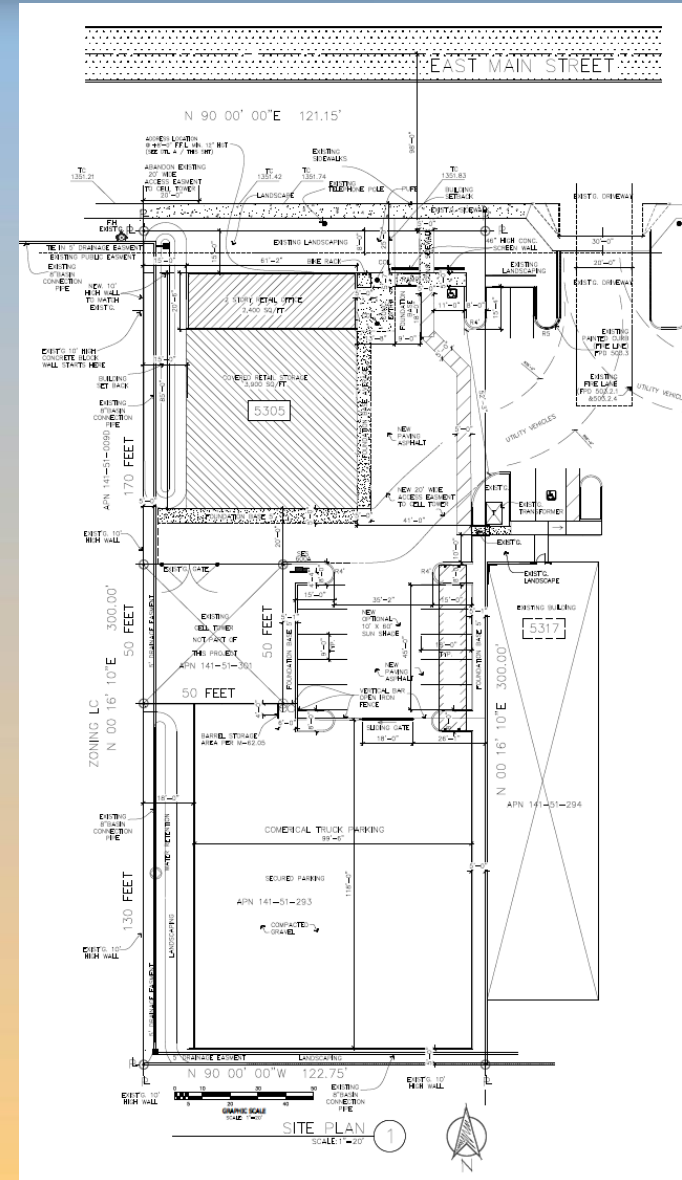


Looking south from Main Street












Site Plan

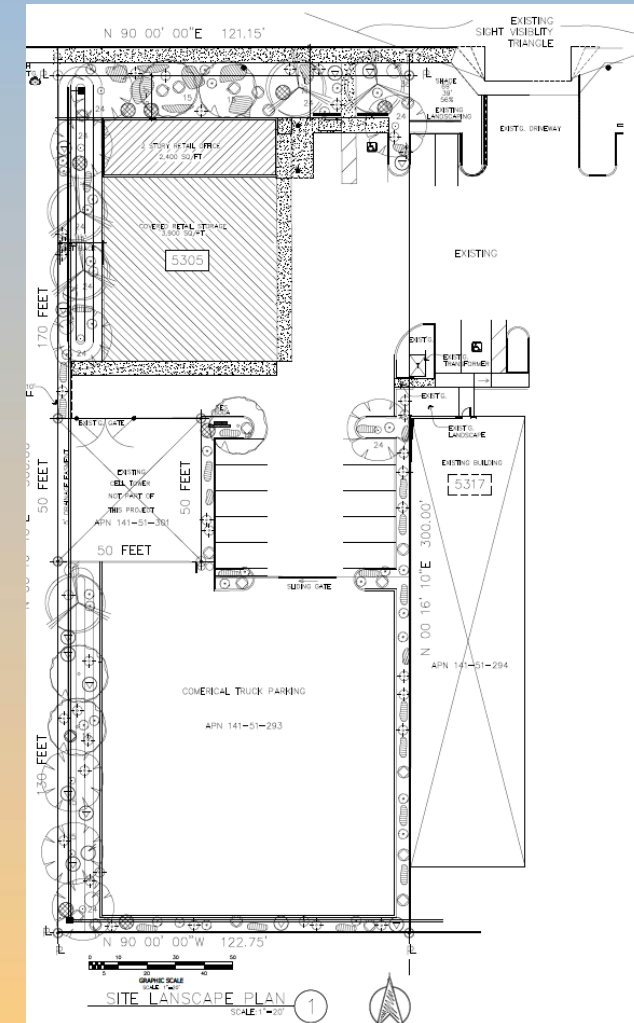
- Shared Access from Main Street
- 7,860 SF building and canopy
- 11 parking spots on site





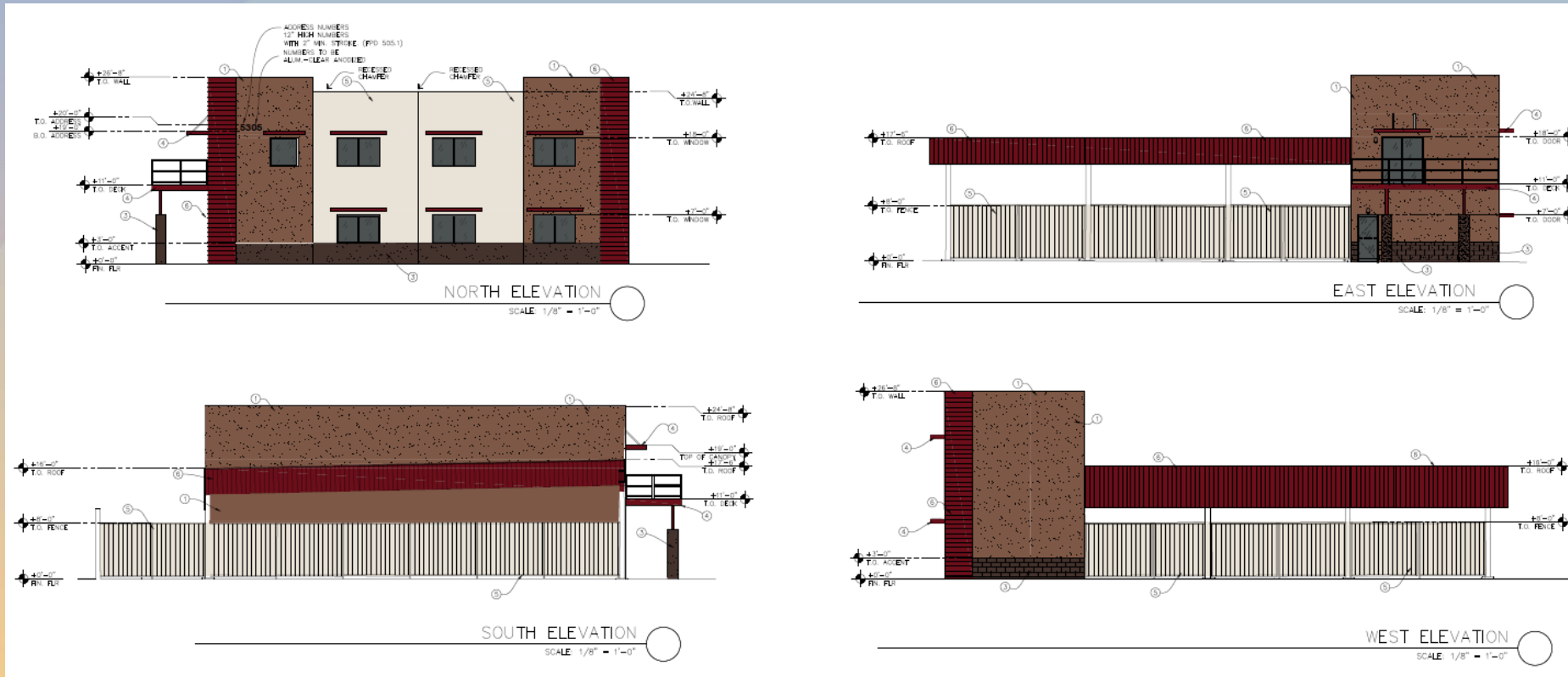
Landscape Plan

PLANT LEGEND				
SYMBOL	COMMON / BOTANICAL NAME	DIMENSIONS / TYPE	SIZE	QTY
TREES:				
	SISSOO TREE <i>SHALIKHIA SISSOO</i>	4"/T	36" DIA 11 24" DIA 10 18" DIA 8	
	EVERGREEN ELM <i>ELMUS PARVIFLUS 'TIGER GREEN'</i>	4"/T	36" DIA 10 24" DIA 16 18" DIA 7	
	CHILEAN MISQUITE <i>PROSOPIS CHILINENSIS</i>	4"/T	36" DIA 4 24" DIA 18 18" DIA 13	
SHRUBS:				
	BOXWOOD BEAUTY <i>CARDESSA GRAVIS 'BOXWOOD BEAUTY'</i>	2-3/S	5 GAL 22 1 GAL 32	
	DESERT CARPET ACACIA <i>ACACIA REDOLENS 'DESERT CARPET'</i>	2-3/S	5 GAL 34 1 GAL 39	
	RED YUCCA <i>HEDECHALIX PARVIFLORA</i>	2-3/S	5 GAL 90 1 GAL 104	
	DWARF PURPLE BOUGAINVILLEA <i>BOUGAINVILLEA 'TINKLETT'</i>	2-3/S	5 GAL 57 1 GAL 28	
	DWARF ROSE OF SHARON BOUGAINVILLEA <i>BOUGAINVILLEA 'ROSEBERRY'</i>	2-3/S	5 GAL 86 1 GAL 97	
	MEXICAN BIRD OF PARADISE <i>CAECALYTHA PULCHERRIMA</i>	2-3/S	5 GAL 21 1 GAL 37	
GROUND COVER:				
	GAZANIA DAYBREAK TIGER STRIPES MIXED <i>GAZANIA TIGRIS</i>	1 /G.C.	1 GAL 150	





Elevations



COLOR SCHEDULE:

①	BUILDING BASE COLOR: BEHR: UNMARK TRAIL N330-3		PRECAST CONCRETE TILT-PANEL
②	VERTICAL ACCENT COLOR: BEHR: MOUNTAIN RIDGE 7805-6		PRECAST CONCRETE TILT-PANEL
③	WAINSCOTT ACCENT COLOR: BEHR: MOUNTAIN RIDGE 7805-6		PRECAST CONCRETE TILT-PANEL
④	METAL CANOPY: MBCI: BURNING SLATE SIGNATURE 200		METAL CANOPY
⑤	SECONDARY ACCENT #1: BEHR: DARK RUFFLE PPU5-19		PRECAST CONCRETE TILT-PANEL
⑥	METAL ACCENT: MBCI: BURNING SLATE SIGNATURE 200		METAL ACCENT PANEL



Alternative Compliance

- ✓ Materials. Facades shall incorporate at least 3 different materials
- ✓ Materials. No more than 50% of the façade may be covered with one single material



Findings

Staff is seeking your review and recommendation on the following:

- ✓ Proposed building elevations and landscape design
- ✓ Alternative Compliance for Building Materials

Staff welcomes any feedback



Design Review Board