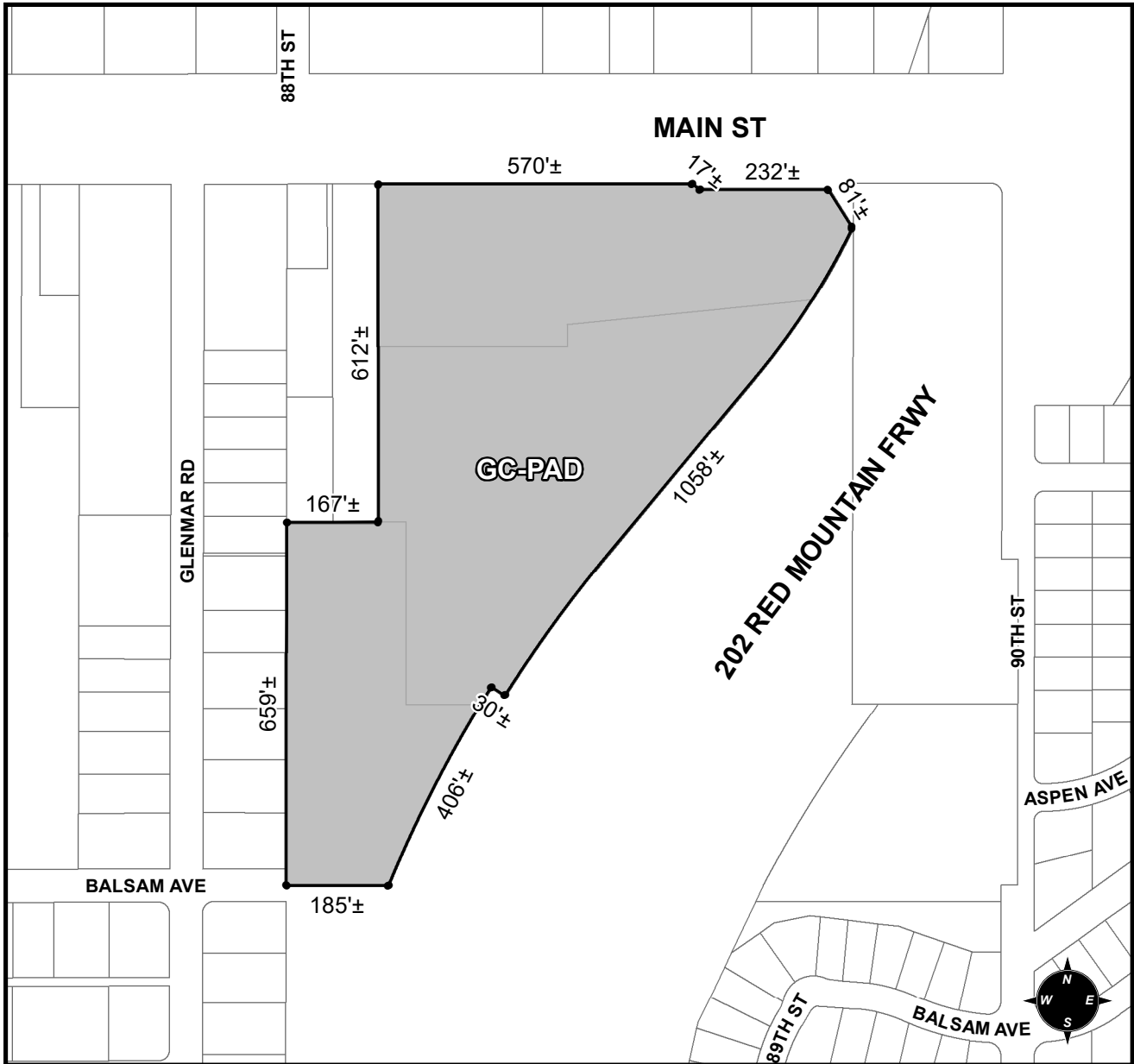




# OFFICIAL SUPPLEMENTARY ZONING MAP AMENDING THE CITY OF MESA ZONING MAP



**CASE: ZON17-00323**  
**ACREAGE: 16.4±**  
**REQUEST: REZONE FROM RS-43 AND GC TO GC-PAD**

**ORDINANCE:** \_\_\_\_\_

Please be advised that the attached zoning changes were approved by the Mesa City Council on \_\_\_\_\_, 2018 by Ordinance # \_\_\_\_\_. If you have any questions concerning these changes, contact the City of Mesa Planning Division at 480-644-2385.

\_\_\_\_\_ **ATTEST:** \_\_\_\_\_ **DATE:** \_\_\_\_\_  
**MAYOR** **CITY CLERK**