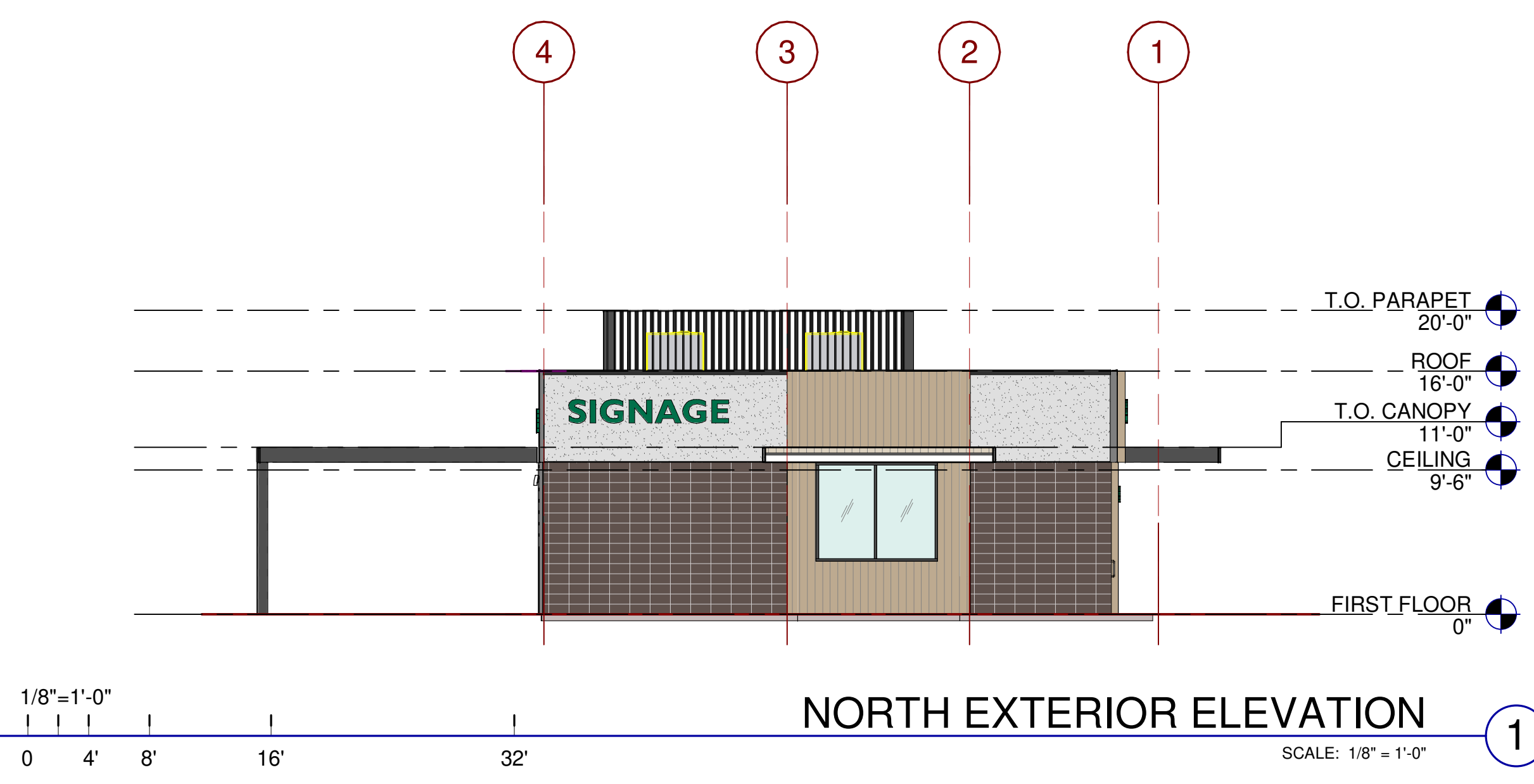


NORTH ELEVATION

TOTAL WALL SF:	657 SF
STUCCO FINISH:	89 SF/657 SF = 13%
CMU BLOCK:	254 SF/657 SF = 39%
WOOD CLADDING:	138 SF/657 SF = 21%
METAL WALL CAP:	45 SF/657 SF = 7%
METAL SCREEN WALL:	81 SF/657 SF = 12%
WINDOWS & DOOR OPENINGS:	52 SF/657 SF = 8%



KEYNOTES:
SEE SHEET CS.3 FOR GENERAL NOTES

ABBREVIATIONS

- T.O.P. = TOP OF PARAPET
- M.P. = TOP OF ROOFING - HIGH POINT
- M.P. = TOP OF ROOFING - MID POINT
- L.P. = TOP OF ROOFING - LOW POINT

LEGEND

- MATERIALS:**
- STUCCO FINISH OVER WOOD STUD. PAINT AS INDICATED.
 - CMU BLOCK - STACKED PATTERN - TRENDSTONE - GROUND FACE FINISH - COLOR: OPAL
 - GEOLAM WOOD PLASTIC COMPOSITE (WPC) CLADDING. MODEL: VERTIGO 5010. CLASS B. COLOR: TEAK.
 - METAL WALL CAP - WESTERN METAL - COLOR: MATTE MIDNIGHT BLACK
 - VINE SCREEN WALL
- GLASS:**
- VISION GLASS
 - TEMPERED GLASS

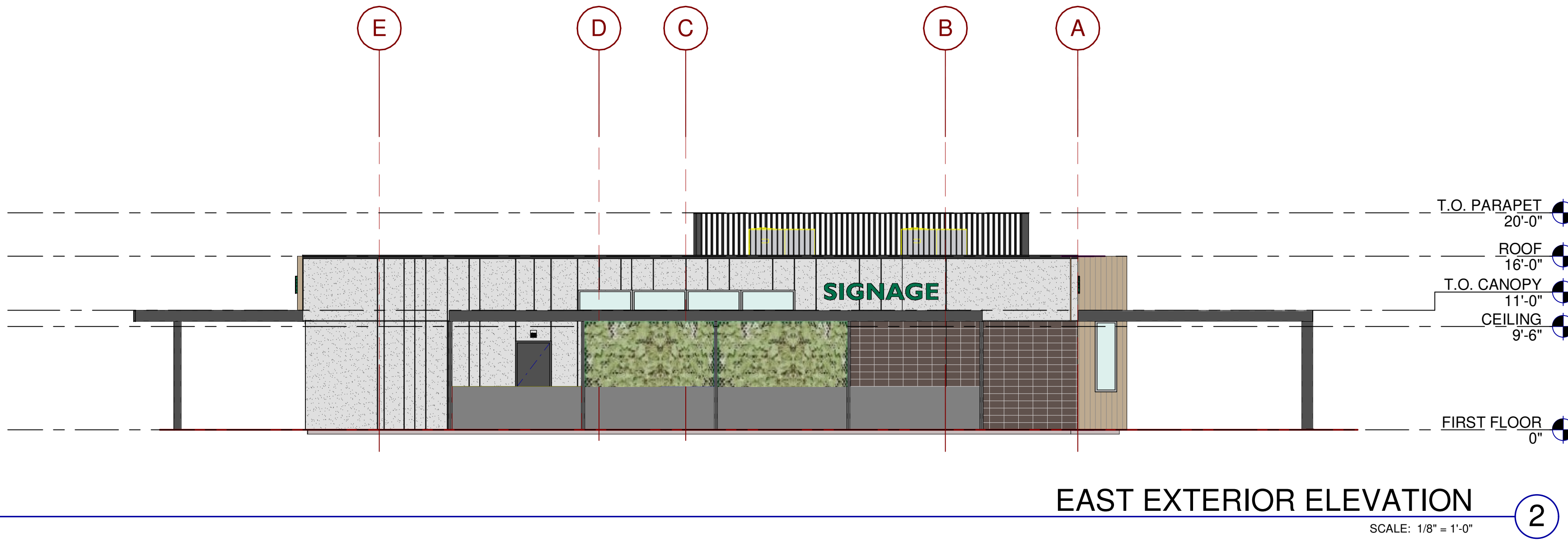
ALL GLASS USED ON THE ENVELOPE OF THE BUILDING TO BE:
U FACTOR = 0.28 AND SHGC = 0.28
GLASS WIND LOAD RESISTANCE CALCULATIONS ARE UNDER SEPARATE PERMIT

COLORS:

- PROVIDE 6'-0" WIDE PAINT COLOR MOCK-UP FULL HEIGHT OF BUILDING FOR OWNER/ARCHITECT REVIEW.
- P-1 SW 7064 - PASSIVE
 - P-2 SW 9541 - WHITE SNOW
 - P-3 SW 9541 - WHITE SNOW

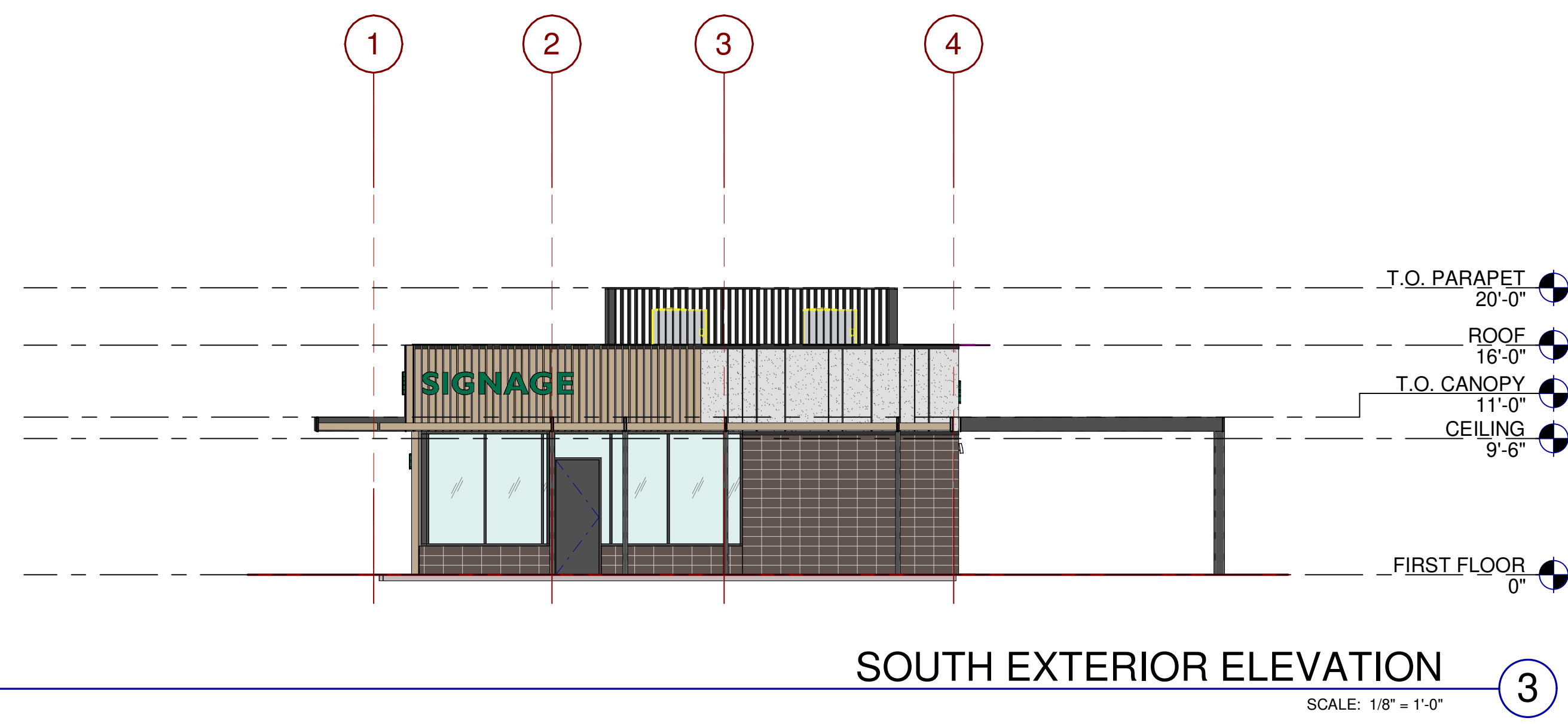
EAST ELEVATION

TOTAL WALL SF:	1,325 SF
STUCCO FINISH:	665 SF/1,325 SF = 49%
CMU BLOCK:	272 SF/1,325 SF = 22%
WOOD CLADDING:	56 SF/1,325 SF = 4%
METAL WALL CAP:	131 SF/1,325 SF = 10%
METAL SCREEN WALL:	121 SF/1,325 SF = 9%
WINDOWS & DOOR OPENINGS:	80 SF/1,325 SF = 6%



SOUTH ELEVATION

TOTAL WALL SF:	724 SF
STUCCO FINISH:	86 SF/724 SF = 12%
CMU BLOCK:	182 SF/724 SF = 25%
WOOD CLADDING:	108 SF/724 SF = 15%
METAL WALL CAP:	85 SF/724 SF = 12%
METAL SCREEN WALL:	81 SF/724 SF = 11%
WINDOWS & DOOR OPENINGS:	182 SF/724 SF = 25%



WEST ELEVATION

TOTAL WALL SF:	1,406 SF
STUCCO FINISH:	70 SF/1,406 SF = 5%
CMU BLOCK:	207 SF/1,406 SF = 15%
WOOD CLADDING:	447 SF/1,406 SF = 32%
METAL WALL CAP:	138 SF/1,406 SF = 10%
METAL SCREEN WALL:	121 SF/1,406 SF = 9%
WINDOWS & DOOR OPENINGS:	425 SF/1,406 SF = 30%



WARE MALCOMB
ARCHITECTURE CIVIL ENGINEERING PLANNING BRANDS INTERIORS
2777 E Camelback Rd. Suite #205 Phoenix, AZ 85016 P: 480.757.1001 F: 480.757.1001

CLIENT LOGO

WARNER & ELLSWORTH RETAIL
SWC OF ELLSWORTH RD & WARNER RD MESA, AZ 85212

EXTERIOR ELEVATIONS

DATE	REMARKS

P.A.P.M.:	BR
DRAWN BY.:	AA
JOB NO.:	PHX22-0171-00

SHEET
A4.1
7/28/2023 3:50:16 PM
XXXXXXX - 85% CD SET