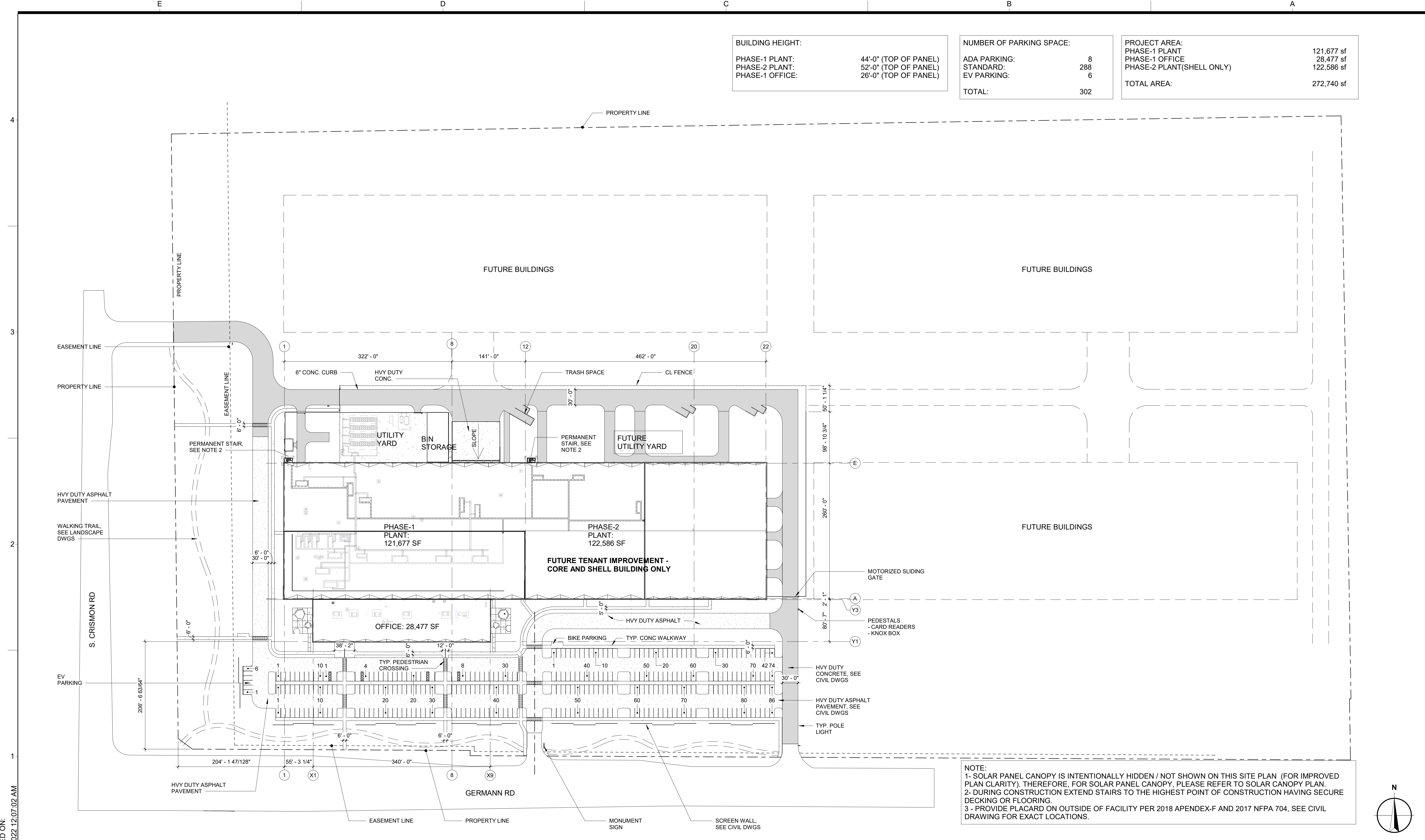


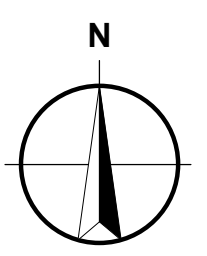
| | |
|------------------|-----------------------|
| BUILDING HEIGHT: | |
| PHASE-1 PLANT: | 44'-0" (TOP OF PANEL) |
| PHASE-2 PLANT: | 52'-0" (TOP OF PANEL) |
| PHASE-1 OFFICE: | 26'-0" (TOP OF PANEL) |

| | |
|--------------------------|-----|
| NUMBER OF PARKING SPACE: | |
| ADA PARKING: | 8 |
| STANDARD: | 288 |
| EV PARKING: | 6 |
| TOTAL: | 302 |

| | | |
|---------------------------|--|------------|
| PROJECT AREA: | | 121,677 sf |
| PHASE-1 PLANT | | 28,477 sf |
| PHASE-1 OFFICE | | 122,586 sf |
| PHASE-2 PLANT(SHELL ONLY) | | |
| TOTAL AREA: | | 272,740 sf |



NOTE:
 1- SOLAR PANEL CANOPY IS INTENTIONALLY HIDDEN / NOT SHOWN ON THIS SITE PLAN (FOR IMPROVED PLAN CLARITY). THEREFORE, FOR SOLAR PANEL CANOPY, PLEASE REFER TO SOLAR CANOPY PLAN.
 2- DURING CONSTRUCTION EXTEND STAIRS TO THE HIGHEST POINT OF CONSTRUCTION HAVING SECURE DECKING OR FLOORING.
 3 - PROVIDE PLACARD ON OUTSIDE OF FACILITY PER 2018 APENDEX-F AND 2017 NFPA 704, SEE CIVIL DRAWING FOR EXACT LOCATIONS.

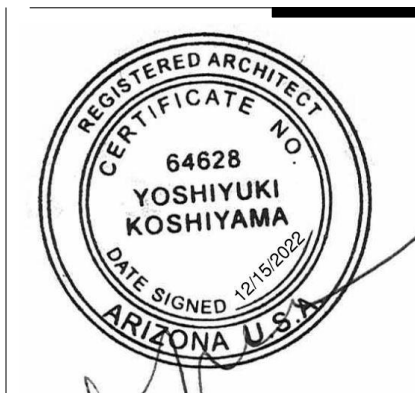


PRINTED ON: 12/17/2022 12:07:02 AM

MASTER SITE PLAN SCALE: 1" = 80'-0" 2

KAJIMA ASSOCIATES INC.
 ARCHITECTURE • ENGINEERING • INTERIORS
3490 PIEDMONT ROAD, SUITE 900 ATLANTA, GEORGIA 30305 (404) 812-8500
THE IDEAS, DESIGNS, DRAWINGS, AND SPECIFICATIONS REPRESENTED HERE ARE AND SHALL REMAIN THE PROPERTY OF KAJIMA ASSOCIATES, INC. AND ANY REPRODUCTIONS, REUSE, SALE OR OTHER DISPOSITION OF THESE DOCUMENTS FOR OTHER THAN THE SPECIFIC PROJECT FOR WHICH THEY HAVE BEEN PREPARED AND DEVELOPED IS EXPRESSLY FORBIDDEN WITHOUT WRITTEN CONSENT OF THE ARCHITECT AND/OR ENGINEER. VISUAL CONTACT WITH THESE DRAWINGS OR SPECIFICATIONS SHALL CONSTITUTE EVIDENCE OF THE ACCEPTANCE OF THESE RESTRICTIONS. © COPYRIGHT BY KAJIMA ASSOCIATES, INC.

KAJIMA ASSOCIATES, INC. ARCHITECT
 3490 PIEDMONT RD. NE, SUITE 900, ATLANTA, GA 30305
Kimley-Horn
 7740 N. 16th Street, Suite 300, Phoenix, AZ 85020
STRUCTURAL ENGINEER
 MECHANICAL / PLUMBING / FIRE PROTECTION / ELECTRICAL ENGINEER
 CIVIL ENGINEER / LANDSCAPE ARCHITECT



JX JX NIPPON MINING AND METALS
 10036 E. Germann Rd, Mesa, Arizona 85212
PROJECT EARL

| DATE | # | REMARKS |
|------------|----|----------------------------------|
| 2021-12-17 | 1 | ISSUED FOR SCHEMATIC DESIGN |
| 2022-05-13 | 8 | ISSUED FOR DESIGN DEVELOPMENT |
| 2022-06-09 | 10 | DD REVISION-2 |
| 2022-07-18 | 11 | ISSUED FOR PERMIT |
| 2022-09-15 | 13 | ISSUED FOR PERMIT RESUBMISSION-1 |
| 2022-12-15 | 19 | ISSUED FOR PERMIT RESUBMISSION-2 |

REVISIONS:

SHEET TITLE: MASTER SITE PLAN

| | |
|-------------------|-------------|
| PROJECT NO.: | 80-21940 |
| PROJECT MANAGER: | KAI |
| PROJECT DESIGNER: | KAI |
| DRAWN BY: | Author |
| CHECKED BY: | Checker |
| SCALE: | 1" = 80'-0" |

A-101