



# Design Review Board



# DRB22-00780

## Gallery Park Freeway Landmark Monument

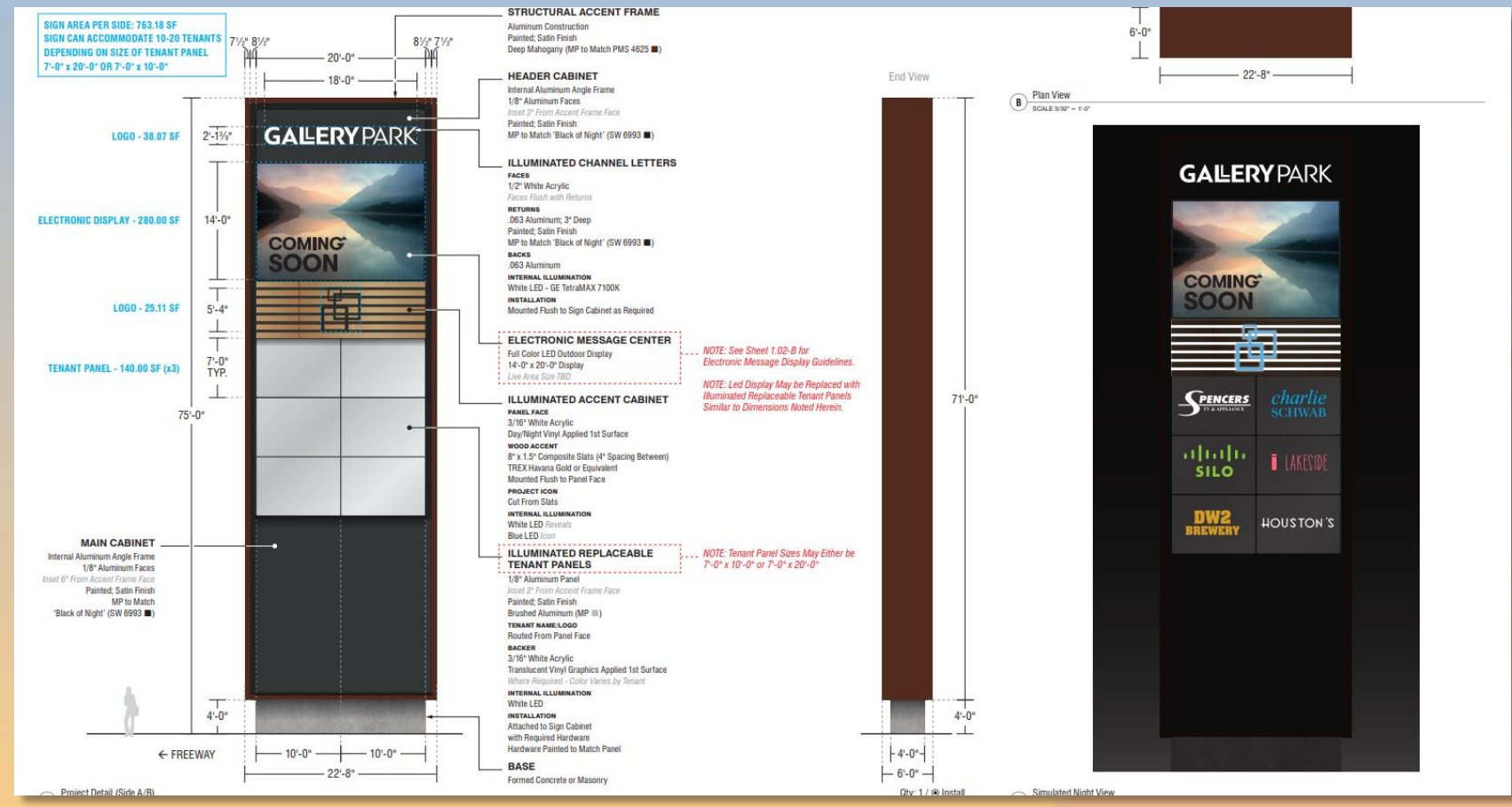
Sean Pesek, Senior Planner

April 9, 2024



# Request

- Design Review
- To allow a Freeway Landmark Monument (FLM) sign within Gallery Park

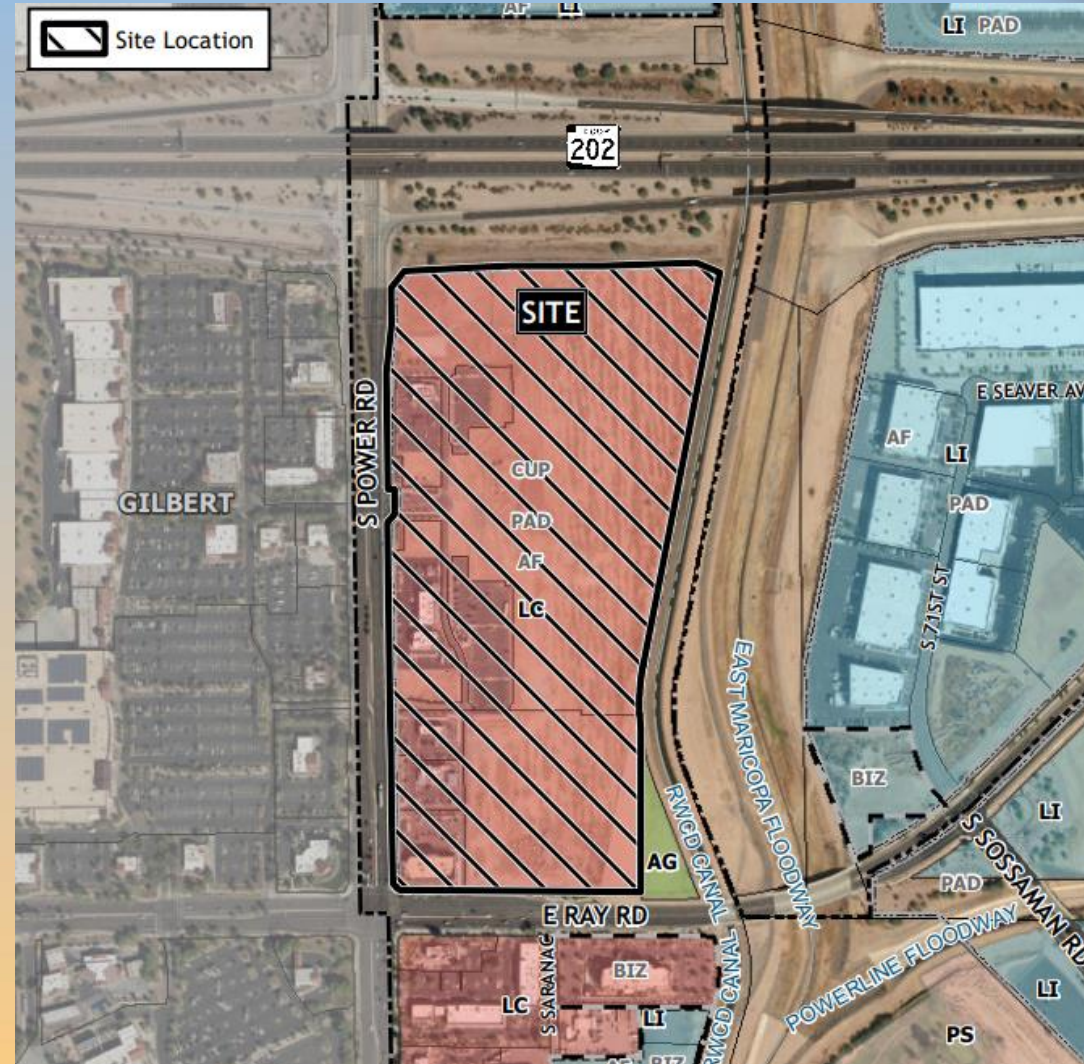






# Location

- East side of Power Road
- North of Ray Road
- Within Gallery Park







# Site Photo



Looking east from Power Road





# Site Photo



Looking north from Ray Road



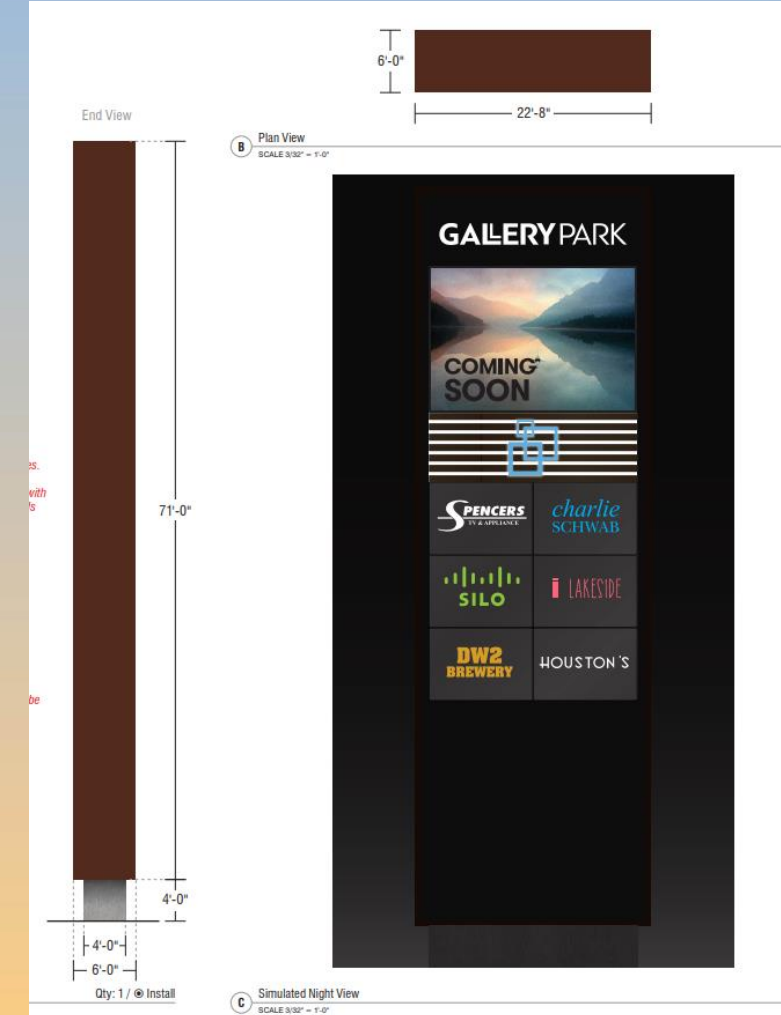
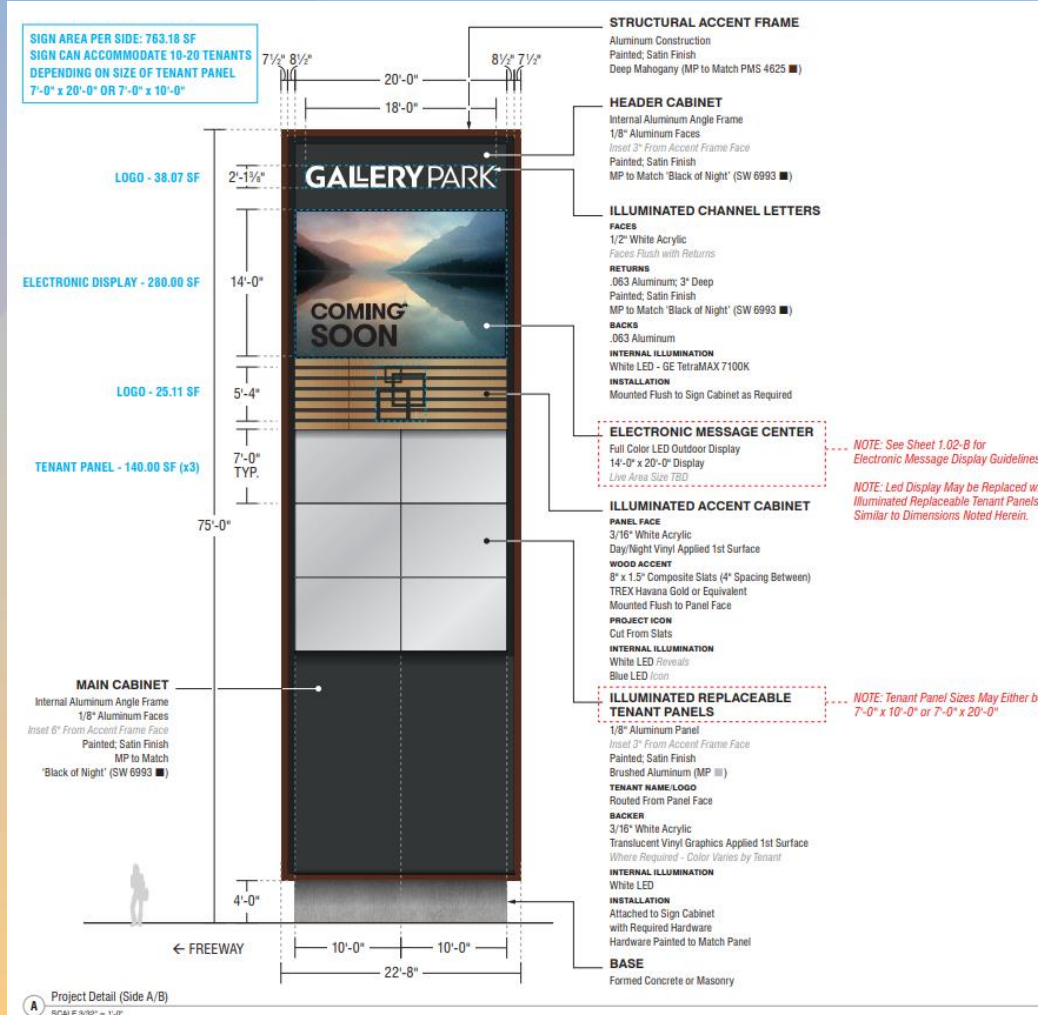


# Sign Site Plan





# Elevations







# Renderings





# Findings

Staff is seeking your review on the following:

- ✓ Proposed design, materials, and architectural details

***Staff welcomes any feedback***





# Design Review Board



# Findings

Staff is seeking your approval on the following:

- ✓ Proposed FLM sign

*Staff recommends Approval with Conditions*