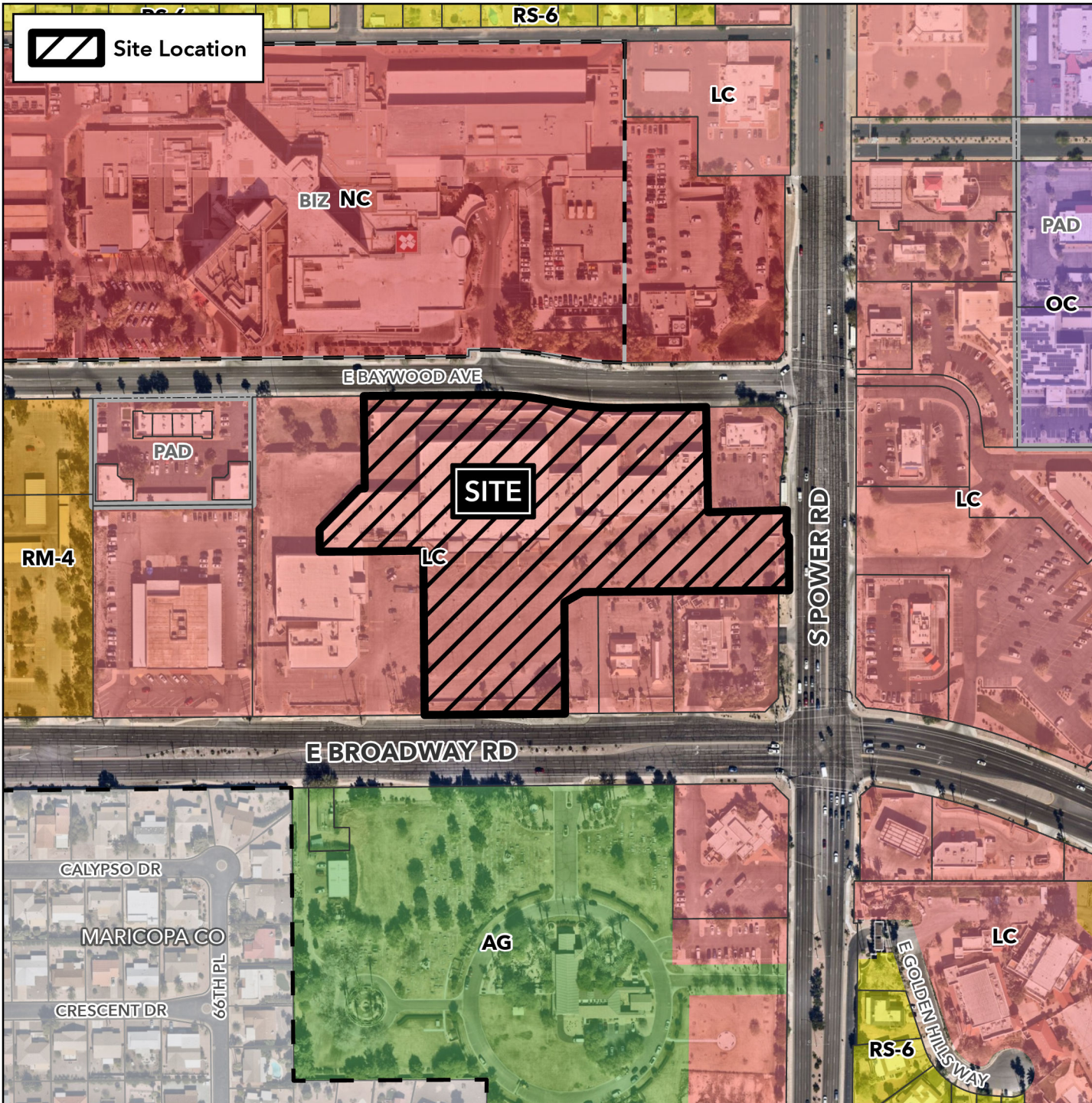


Board of Adjustment Vicinity Map: BOA25-01000

Case Details

 Site Location



Case:

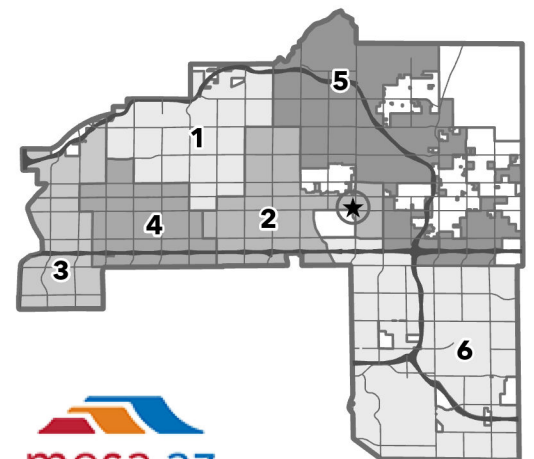
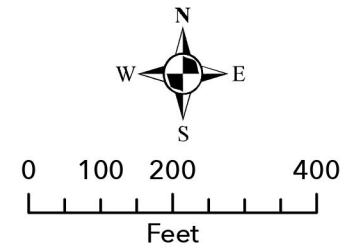
BOA25-01000

Site / Address:

6.7± acres located at the northwest corner of East Broadway Road and South Power Road. (District 2)

Request:

Requesting a Substantial Conformance Improvement Permit (SCIP) to allow deviations from certain development standard to allow for modifications to an existing Group Commercial Center.




mesa·az