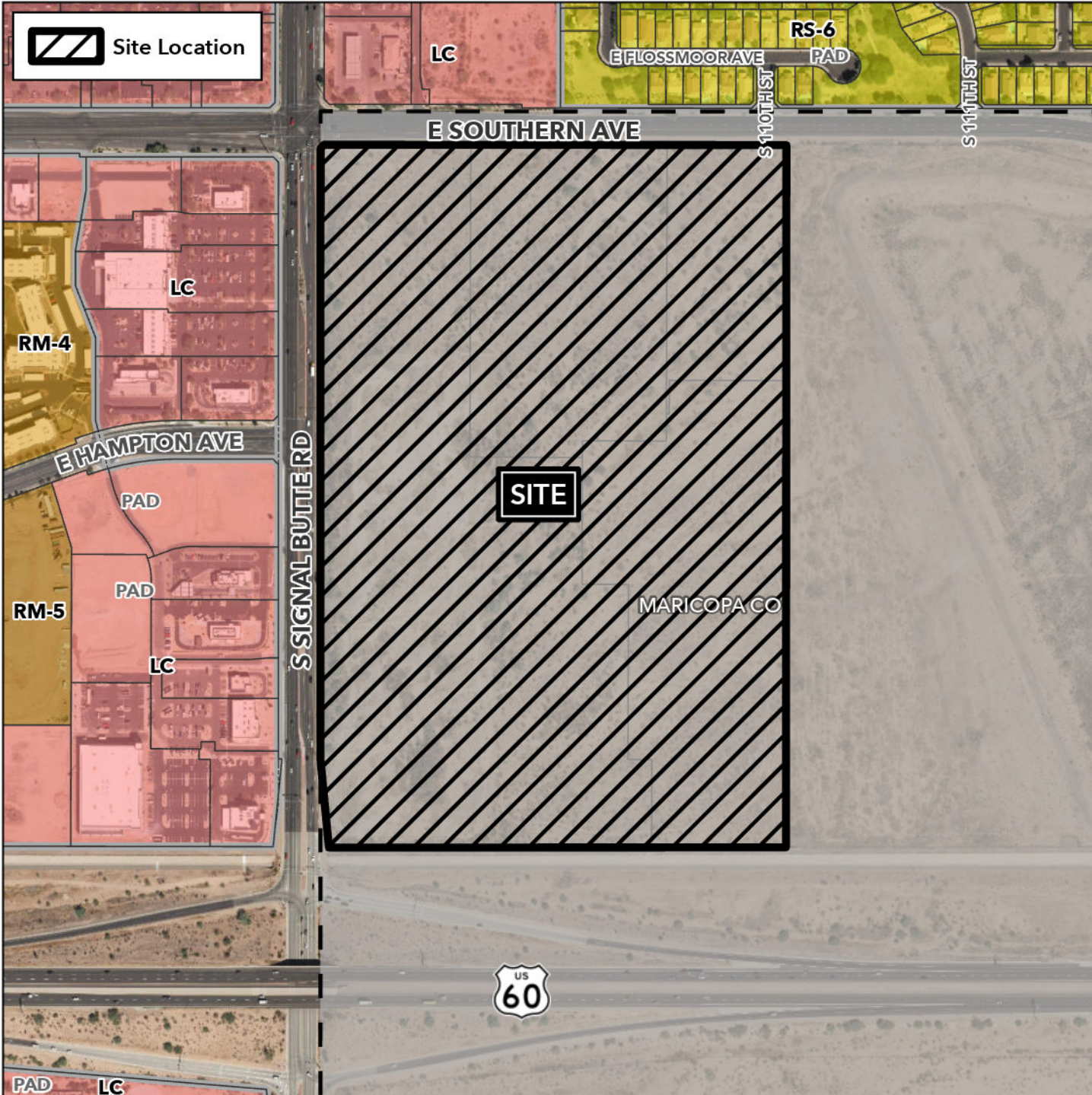


# Planning and Zoning Vicinity Map: ZON23-00691

## Case Details



### Case:

ZON23-00691

### Site / Address:

(District 5) 61± acres located at the southeast corner of East Southern Avenue and South Signal Butte Road.

### Request:

Rezone from Agricultural (AG) to Limited Commercial with a Planned Area Development Overlay (LC-PAD), Council Use Permit, and Site Plan Review to allow for a mixed-use development.

