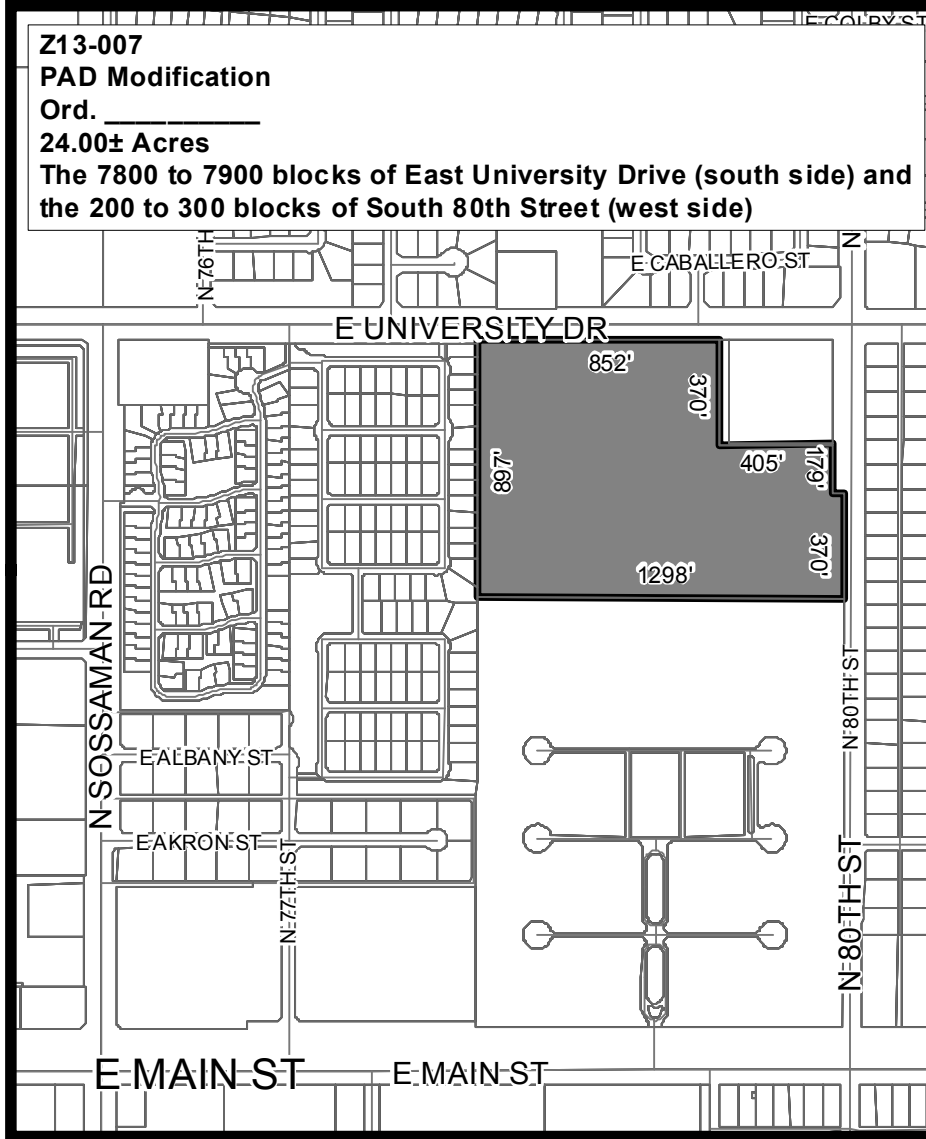


OFFICIAL SUPPLEMENTARY ZONING MAP
AMENDING THE CITY OF MESA ZONING MAP



Z13-007

PAD Modification

Ord. _____

24.00± Acres

The 7800 to 7900 blocks of East University Drive (south side) and the 200 to 300 blocks of South 80th Street (west side)

Please be advised that the attached zoning changes were approved by the Mesa City Council on _____, 2013 by Ordinance # _____. If you have any questions concerning these changes, contact the City of Mesa Planning Division at 480-644-2385.

_____ **ATTEST:** _____ **DATE:** _____
MAYOR **CITY CLERK**