



A - NORTH ELEVATION



ARCHITECTS & ENGINEERS, INC

CITY OF MESA
DOWNTOWN MESA FACADES | 155 W MAIN ST

NORTH ELEVATION

09/24/24

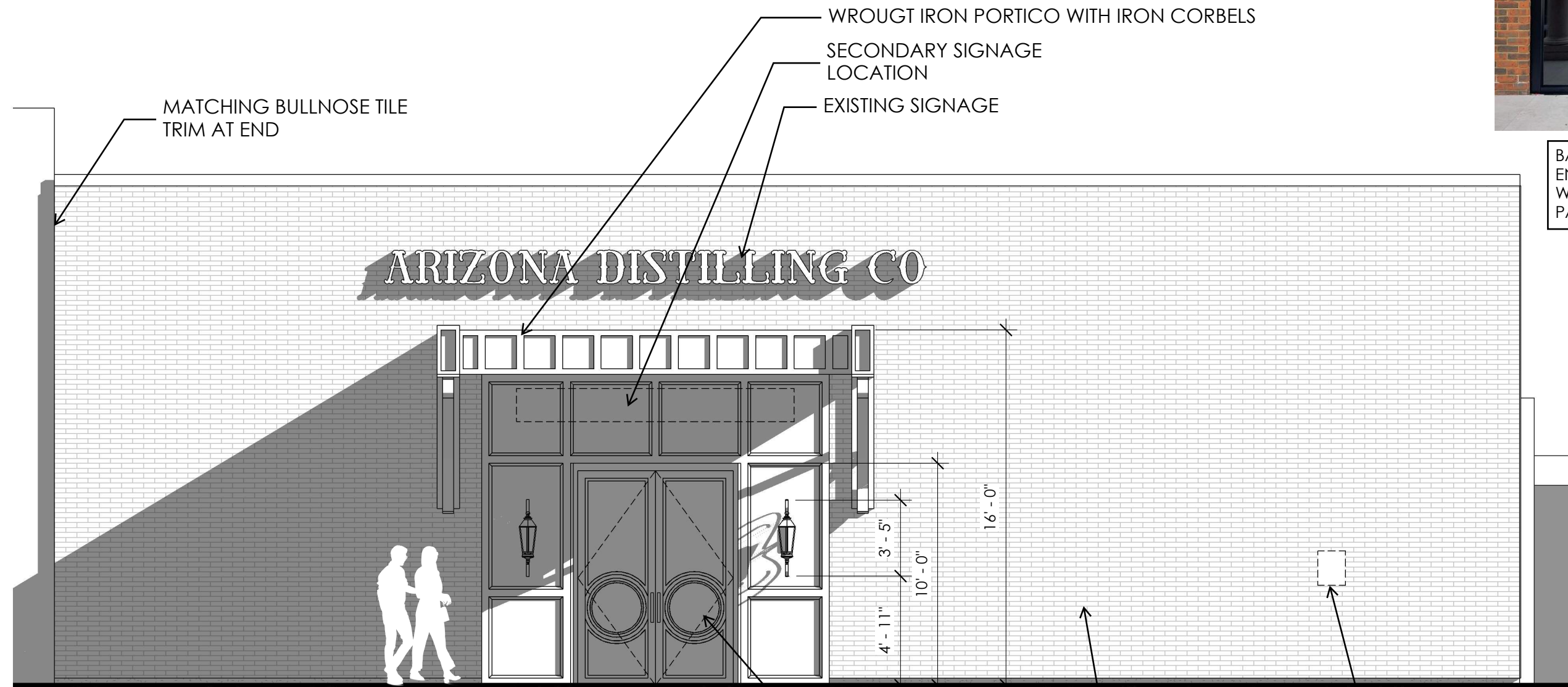


CITY OF MESA
DOWNTOWN MESA FACADES | 155 W MAIN ST

ARCHITECTS & ENGINEERS, INC

RENDERING

09/24/24



A - NORTH ELEVATION

MATCHING BULLNOSE TILE TRIM AT END

WROUGHT IRON PORTICO WITH IRON CORBELS
 SECONDARY SIGNAGE LOCATION
 EXISTING SIGNAGE

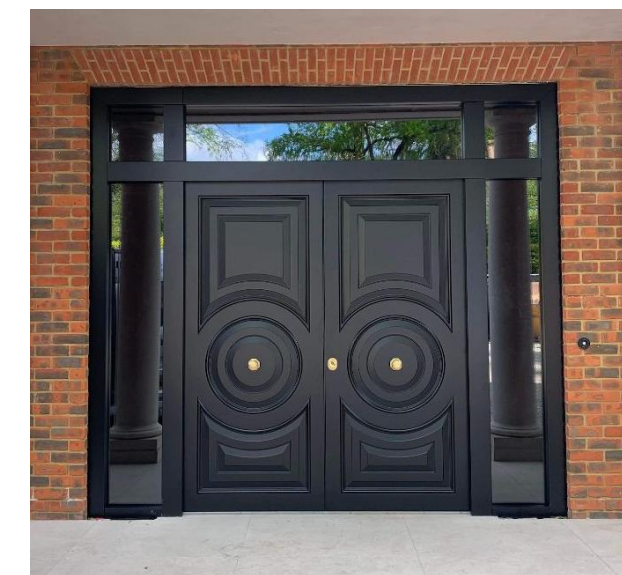
ARIZONA DISTILLING CO

NEW FRAMED ENTRYWAY WALLS WITH BLACK PAINTED MOULDED CEMENT BOARD PANELING

NEW SOLID CORE WOOD ENTRY DOORS - PAINTED BLACK - 10' HEAD HEIGHT

REMOVE EXISTING STUCCO & PROVIDE NEW CERAMIC TILE. EXISTING WALL SUBSTRATE IS CONCRETE MASONRY

SALVAGE AND REINSTALL HISTORIC PLAQUE - LOCATION TO BE DETERMINED BY CITY OF MESA



BASIS-OF-DESIGN EXAMPLE FOR NEW ENTRY DOORS - SOLID CORE WOOD WITH CIRCULAR MOULDED PANELING, PAINTED BLACK.



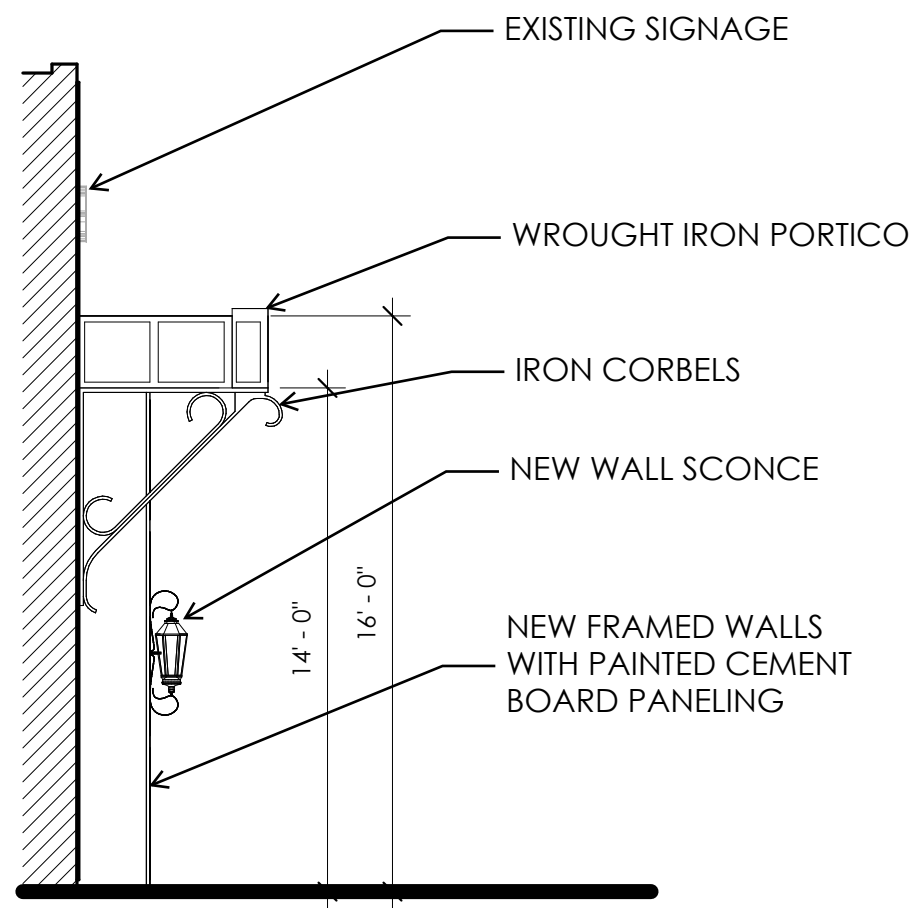
CITY OF MESA
 DOWNTOWN MESA FACADES | 155 W MAIN ST
 SCALE: 3/16" = 1'-0"



ARCHITECTS & ENGINEERS, INC

NORTH ELEVATION

11/21/24



B - EAST ELEVATION



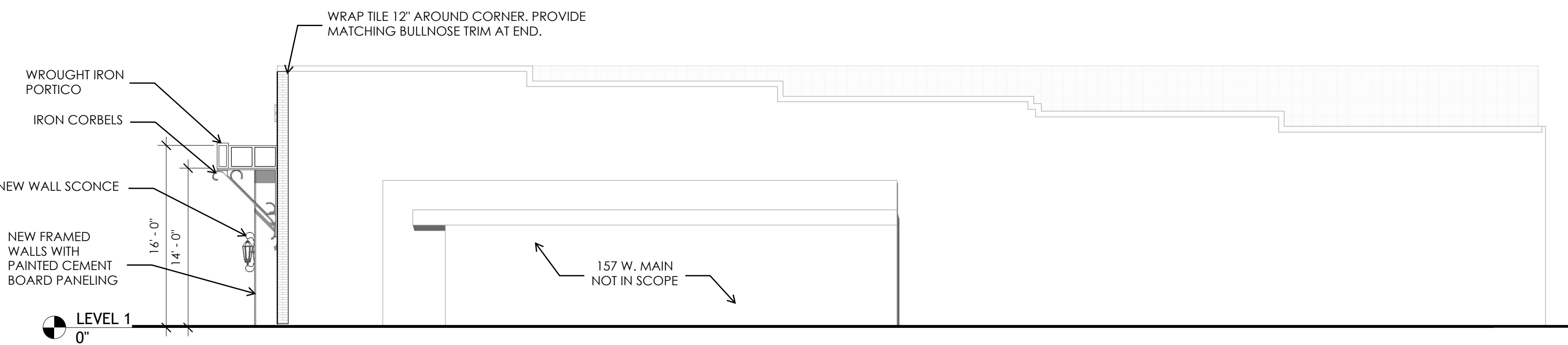
ARCHITECTS & ENGINEERS, INC

CITY OF MESA
 DOWNTOWN MESA FACADES | 155 W MAIN ST
 SCALE: 3/16" = 1'-0"



EAST ELEVATION

11/12/24



C - WEST ELEVATION